

US EPA ARCHIVE DOCUMENT



This document includes Appendix E: Marina Survey Results, for the EPA report Final No-Discharge Zone Evaluation. The reference number is: EPA-842-R-04-001.

Final No Discharge Zone Evaluation

Appendix E: Marina Survey Results

August 2004

APPENDIX E

Marina Survey Results

APPENDIX E-1

Marina Survey Results for Individual Survey Questions

Table E-1. Number of Slips in Marina (Q1)

Slips	Number	Weighted Percent	Standard Error
<50	13	18.9	5.2
50-149	20	29.6	4.8
150-299	23	35.3	6.3
300+	12	16.1	3.9
Missing	1	.	.

Figure E-1. Number of Slips in Marina (Q1)

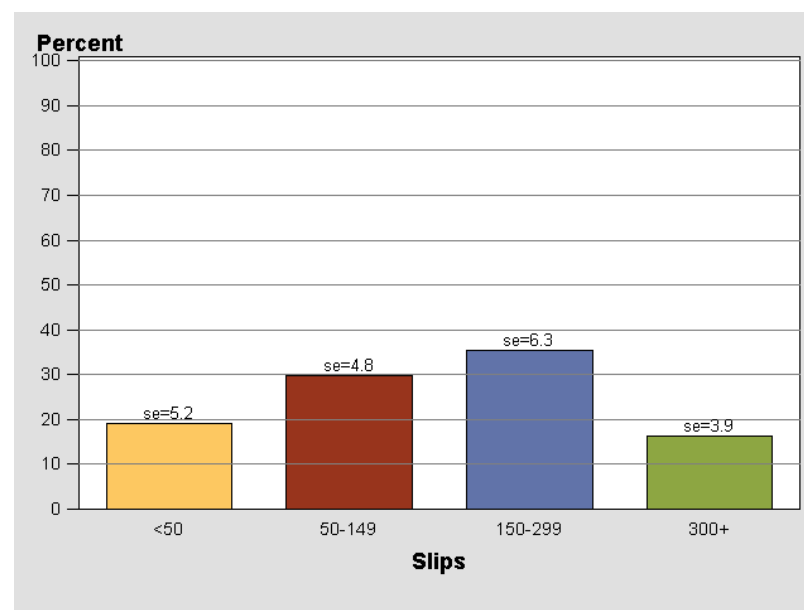


Table E-2. Number of Boats in Marina (Q2)

Boats	Number	Weighted Percent	Standard Error
<50	21	31.4	5.9
50-149	17	25.5	6.2
150-299	21	31.5	6.7
300+	9	11.6	3.4
Missing	1	.	.

Figure E-2. Number of Boats in Marina (Q2)

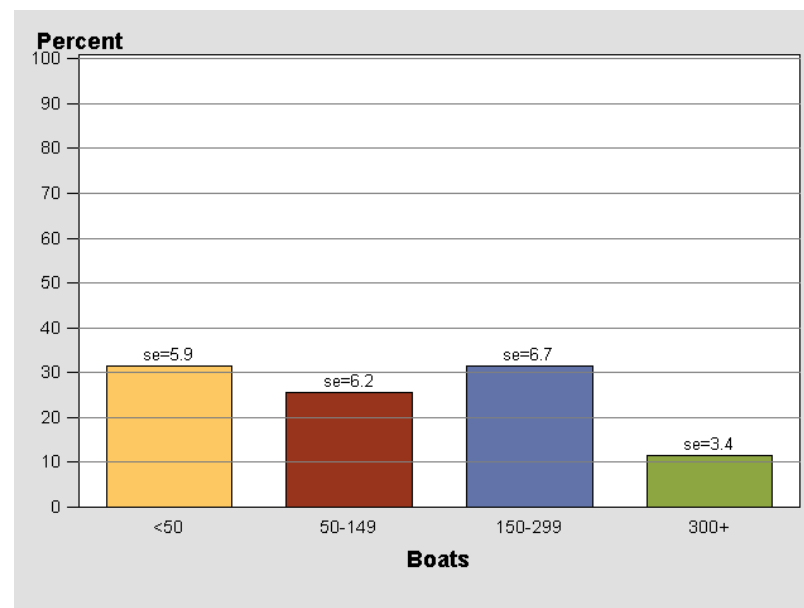


Table E-3. Marina Facilities (Q3)

Facility	Response	Number	Weighted Percent	Standard Error
Onshore Pump	Yes	62	90.1	3.6
Onshore Pump	No	7	9.9	3.6
Mobile Pump	Yes	14	21.0	4.9
Mobile Pump	No	48	79.0	4.9
Mobile Pump	Missing	7	.	.
Toilet Dump	Yes	16	23.0	4.5
Toilet Dump	No	47	77.0	4.5
Toilet Dump	Missing	6	.	.
Portable Pump	Yes	21	33.2	6.1
Portable Pump	No	41	66.8	6.1
Portable Pump	Missing	7	.	.

Figure E-3. Marina Facilities (Q3)

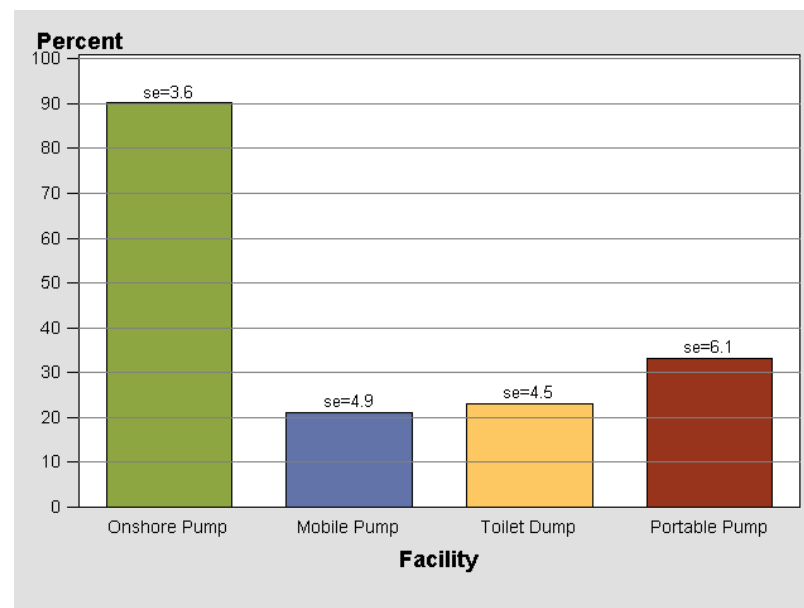


Table E-4. Number of Onshore Pumpout Facilities (Q3A)

Facilities	Number	Weighted Percent	Standard Error
1	50	83.5	4.4
2	7	10.7	3.6
3	4	5.8	2.8
Missing	1	.	.
Not applicable	7	.	.

Figure E-4. Number of Onshore Pumpout Facilities (Q3A)

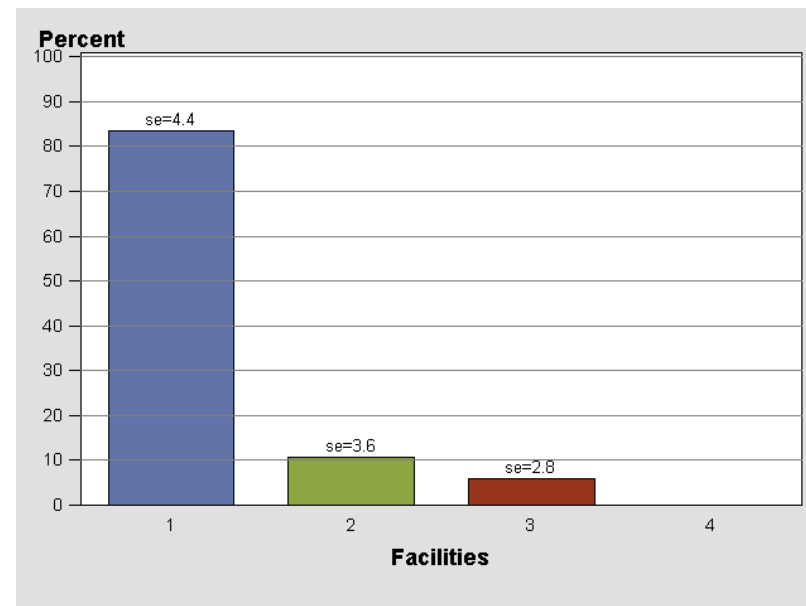


Table E-5. Number of Mobile Pumpout Facilities (Q3B)

Facilities	Number	Weighted Percent	Standard Error
1	12	91.3	7.5
2	1	8.7	7.5
Missing	1	.	.
Not applicable	55	.	.

Figure E-5. Number of Mobile Pumpout Facilities (Q3B)

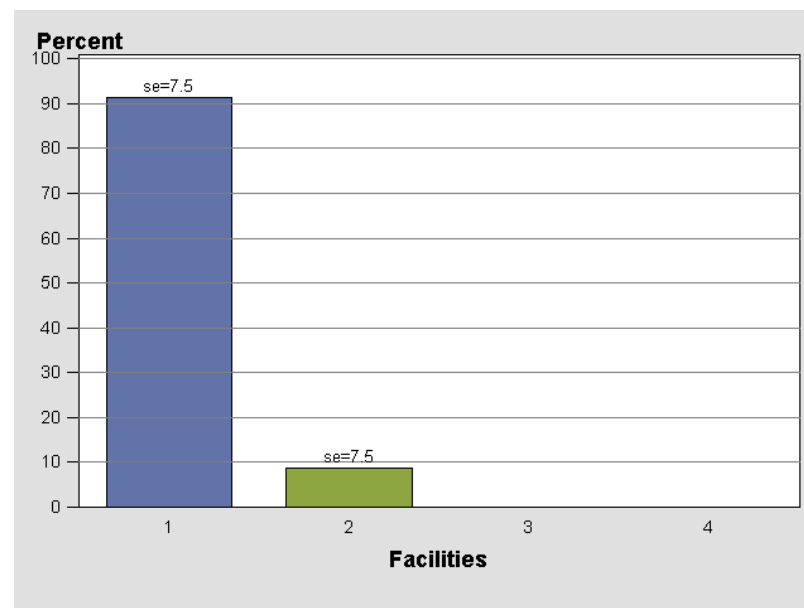


Table E-6. Number of Toilet Dump Facilities (Q3C)

Facilities	Number	Weighted Percent	Standard Error
1	15	94.8	4.5
2	1	5.2	4.5
Not applicable	53	.	.

Figure E-6. Number of Toilet Dump Facilities (Q3C)

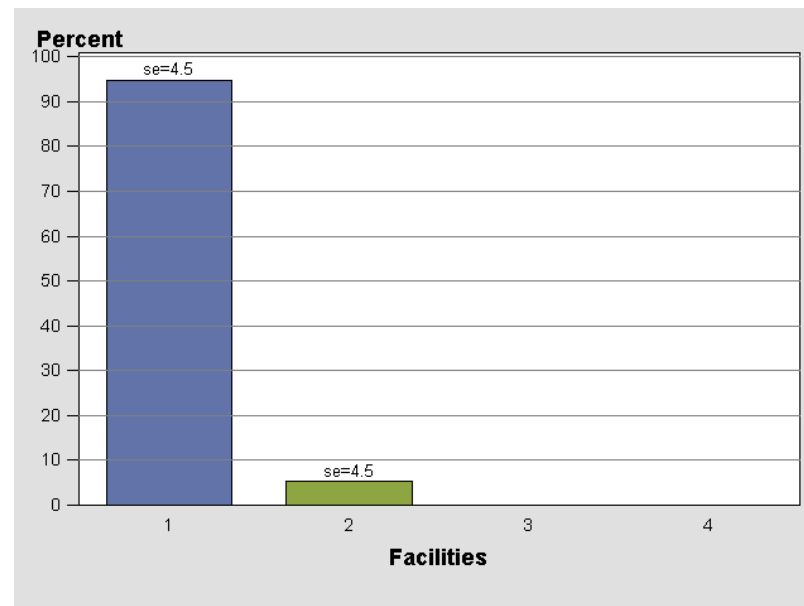


Table E-7. Number of Portable Pumpout Facilities (Q3D)

Facilities	Number	Weighted Percent	Standard Error
1	20	96.4	3.1
4	1	3.6	3.1
Not applicable	48	.	.

Figure E-7. Number of Portable Pumpout Facilities (Q3D)

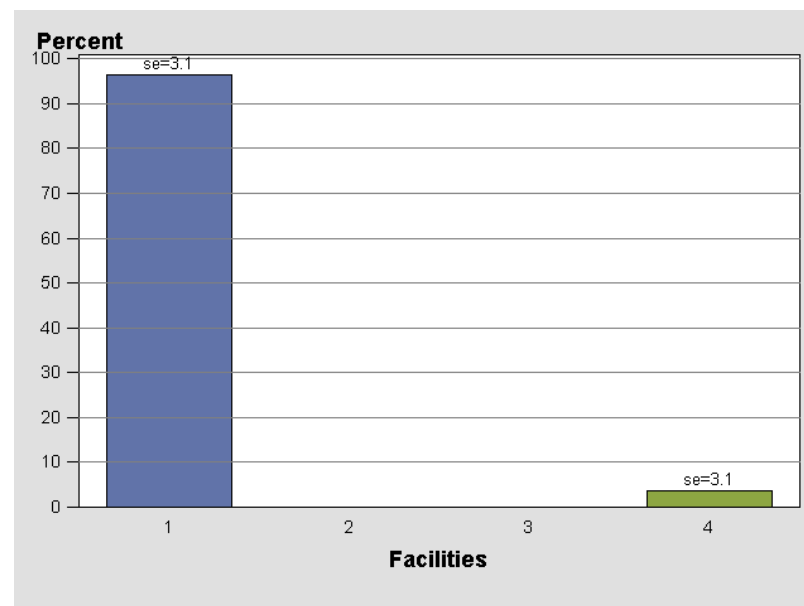


Table E-8. Other Services at Marina (Q4)

Service	Response	Number	Weighted Percent	Standard Error
Fuel	Yes	45	64.6	4.5
Fuel	No	24	35.4	4.5
Boat Repair	Yes	40	57.1	5.6
Boat Repair	No	29	42.9	5.6
Boat Sales	Yes	27	39.0	5.3
Boat Sales	No	41	61.0	5.3
Boat Sales	Missing	1	.	.
Equip Sales	Yes	36	51.4	5.2
Equip Sales	No	32	48.6	5.2
Equip Sales	Missing	1	.	.
Bait	Yes	21	30.8	5.5
Bait	No	46	69.2	5.5
Bait	Missing	2	.	.
Storage	Yes	31	45.2	4.9
Storage	No	36	54.8	4.9
Storage	Missing	2	.	.
Food	Yes	37	54.2	5.3
Food	No	31	45.8	5.3
Food	Missing	1	.	.

Figure E-8. Other Services at Marina (Q4)

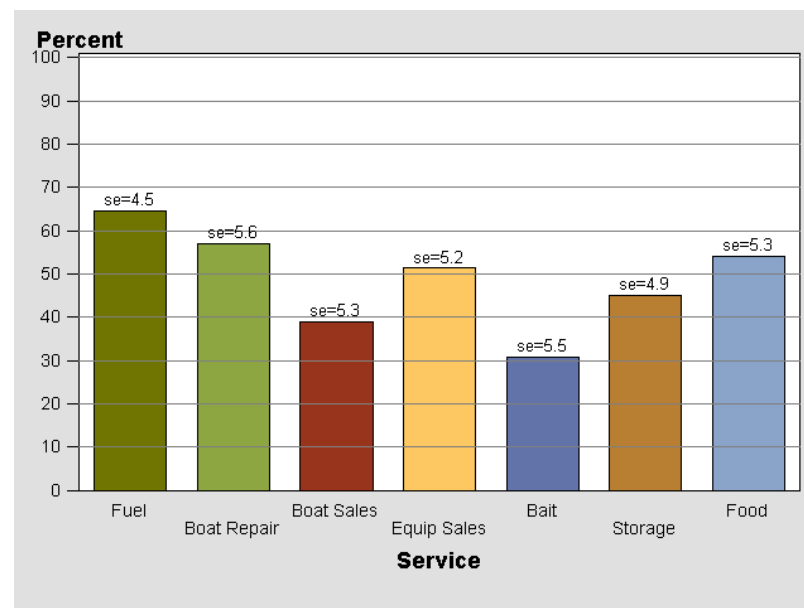


Table E-9. Maximum Draft Marina Can Handle (Q6)

Draft (feet)	Number	Weighted Percent	Standard Error
<6	10	16.8	3.8
6-8	27	40.6	5.4
9-11	12	17.6	3.9
12-14	5	8.2	3.2
15+	11	16.9	3.8
Missing	4	.	.

Figure E-9. Maximum Draft Marina Can Handle (Q6)

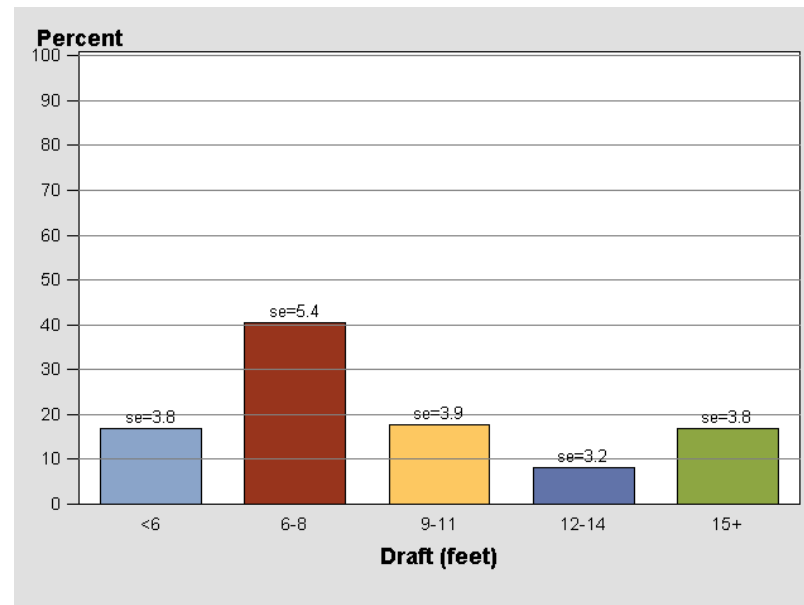


Table E-10. Marina Received any Clean Vessel Act Monies (Q7)

Received Money	Number	Weighted Percent	Standard Error
Yes	38	59.6	5.3
No	25	40.4	5.3
Missing	6	.	.

Figure E-10. Marina Received any Clean Vessel Act Monies (Q7)

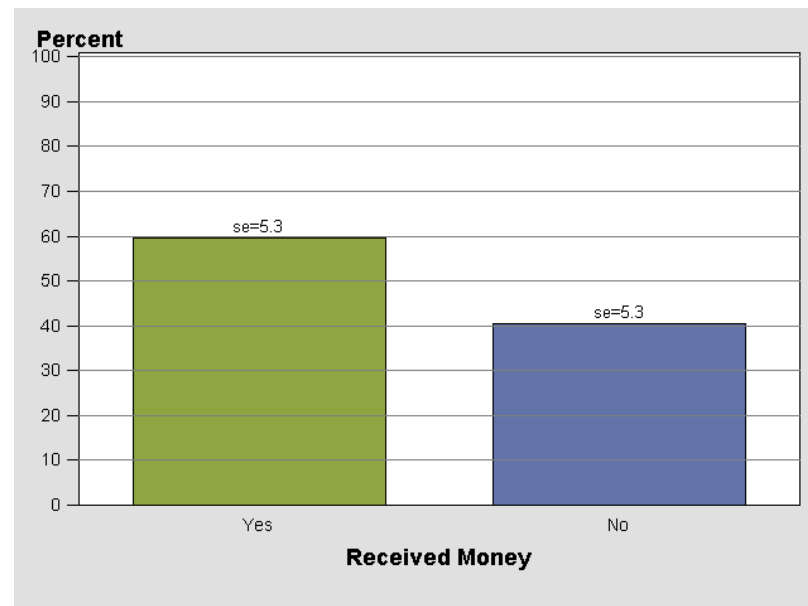


Table E-11. Amount of Money Charged per Pumpout or Toilet Dump (Q8)

Charge (\$)	Number	Weighted Percent	Standard Error
0	24	35.1	5.0
1-5	1	1.9	1.7
6+	42	63.0	5.2
Missing	2	.	.

Figure E-11. Amount of Money Charged per Pumpout or Toilet Dump (Q8)

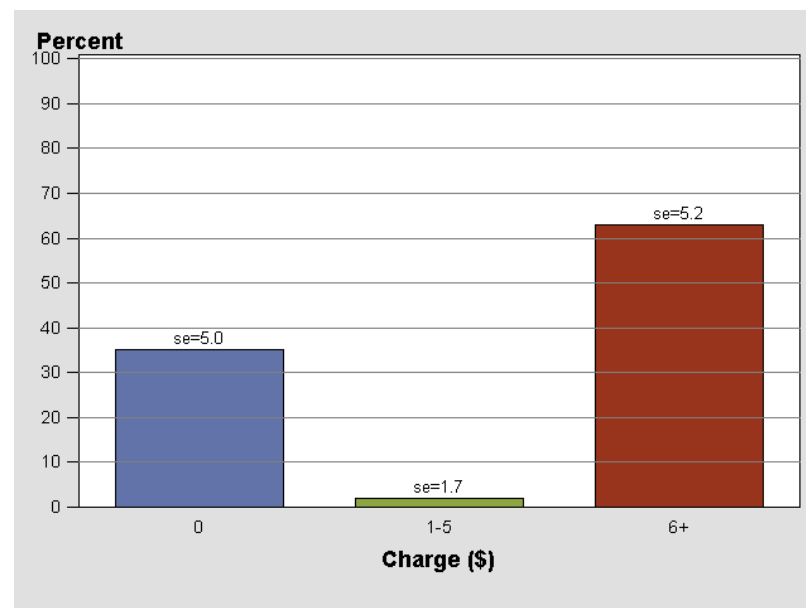


Table E-12. Annual Cost to Operate and Maintain Pumpout or Toilet Dump Facilities (Q9)

Cost (\$)	Number	Weighted Percent	Standard Error
<500	12	28.5	6.4
500-2499	16	39.7	7.9
2500+	15	31.8	6.7
Missing	26	.	.

Figure E-12. Annual Cost to Operate and Maintain Pumpout or Toilet Dump Facilities (Q9)

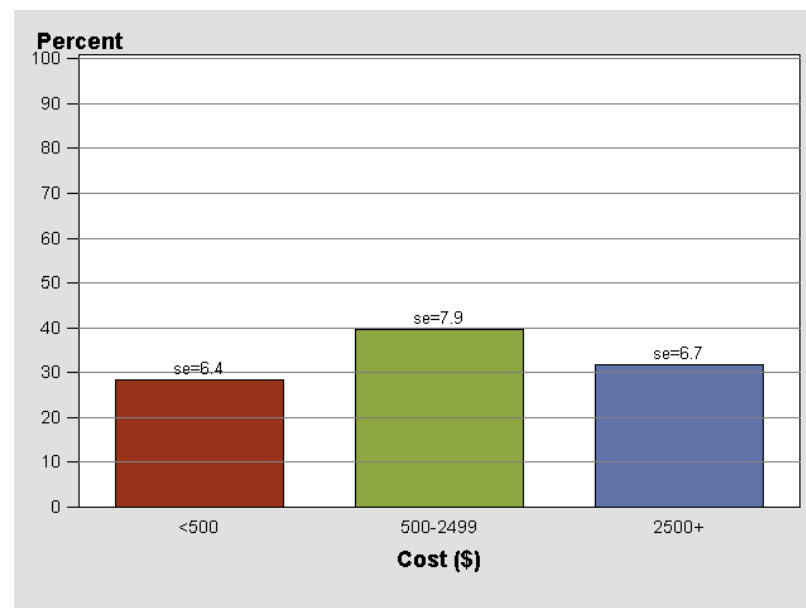


Table E-13. People Who Perform Pumpout or Toilet Dump Operation (Q10)

Operator	Number	Weighted Percent	Standard Error
Marina staff	28	43.8	4.4
Boaters	20	29.8	4.5
Both	19	26.5	4.1
Missing	2	.	.

Figure E-13. People Who Perform Pumpout or Toilet Dump Operation (Q10)

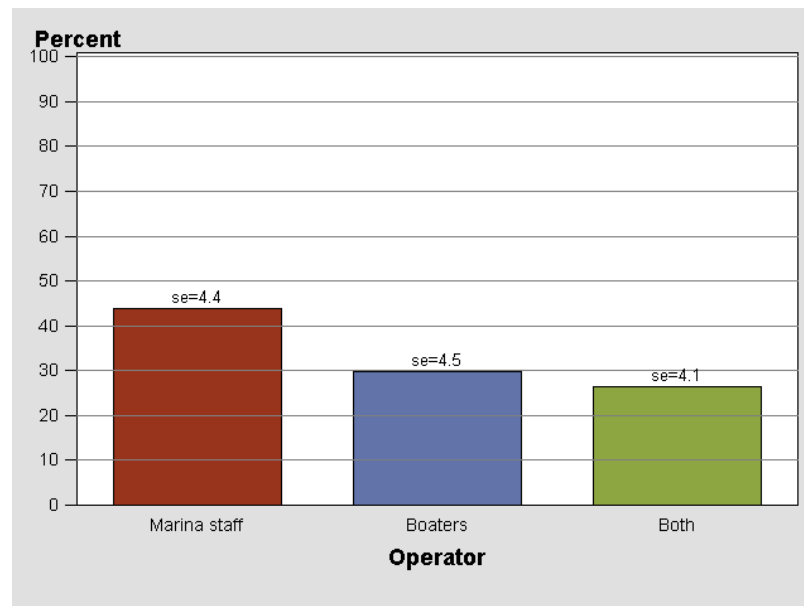


Table E-14. Marina Staff Training (Q11)

Trained	Number	Weighted Percent	Standard Error
Yes	48	83.2	5.2
No	10	16.8	5.2
Missing	11	.	.

Figure E-14. Marina Staff Training (Q11)

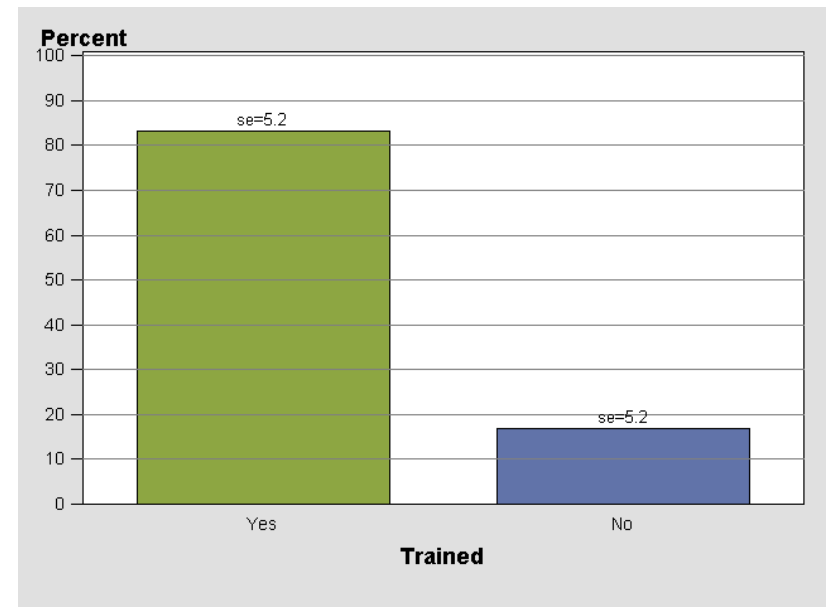


Table E-15. Length of Marina Staff Training (Q12)

Training Length	Number	Weighted Percent	Standard Error
<30 min	18	36.0	6.1
30 min - 1 hr	17	33.5	7.0
1-5 hrs	12	26.0	6.0
5-10 hrs	2	4.5	3.2
10+ hrs	0	0.0	0.0
Missing	9	.	.
Appropriate skip	11	.	.

Figure E-15. Length of Marina Staff Training (Q12)

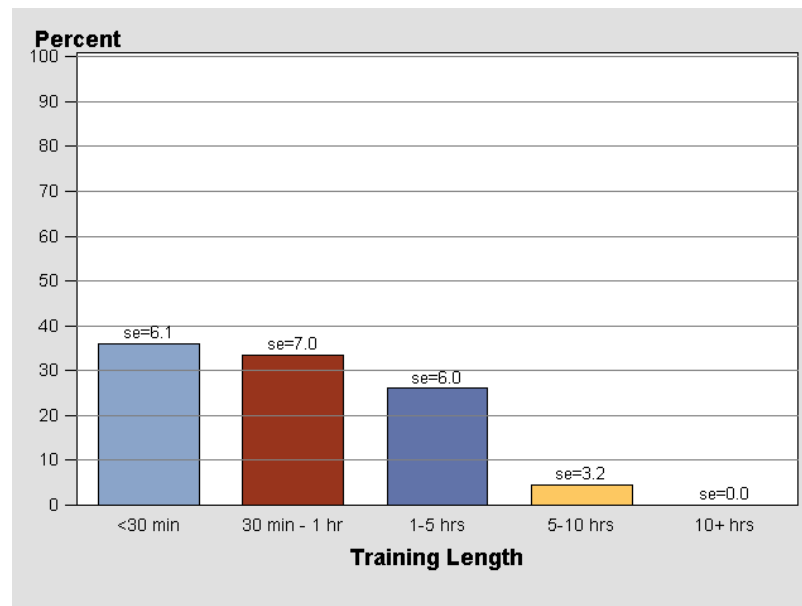


Table E-16. Type of Staff Training (Q13)

Training Type	Response	Number	Weighted Percent	Standard Error
Self Train	Yes	8	13.8	4.8
Self Train	No	49	86.2	4.8
Self Train	Missing	2	.	.
Self Train	Appropriate skip	10	.	.
Marina	Yes	49	85.7	4.1
Marina	No	8	14.3	4.1
Marina	Missing	2	.	.
Marina	Appropriate skip	10	.	.
Vendor	Yes	2	3.3	2.1
Vendor	No	55	96.7	2.1
Vendor	Missing	2	.	.
Vendor	Appropriate skip	10	.	.
Off Site	Yes	3	5.3	2.4
Off Site	No	54	94.7	2.4
Off Site	Missing	2	.	.
Off Site	Appropriate skip	10	.	.

Figure E-16. Type of Staff Training (Q13)

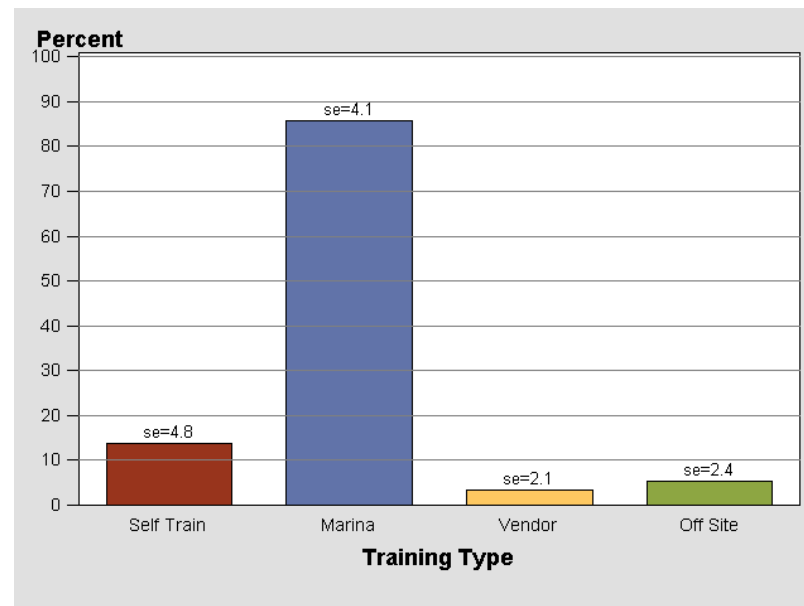
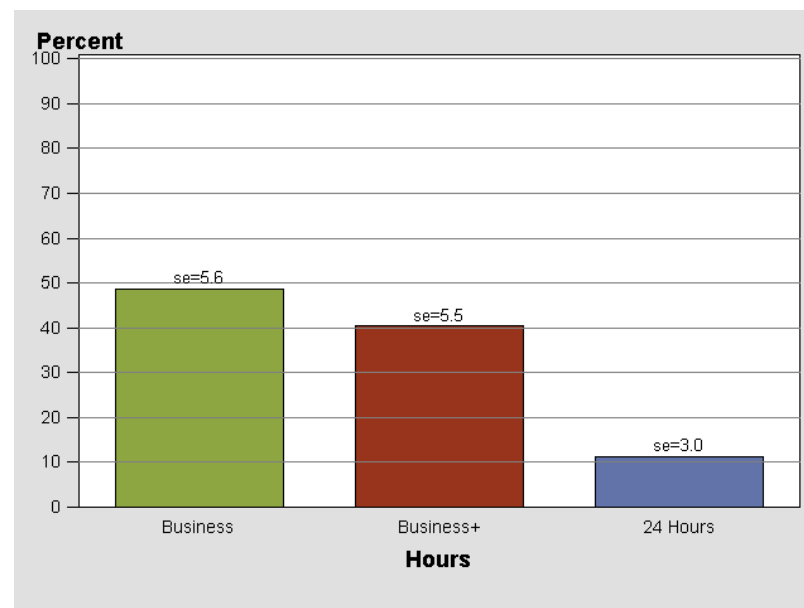


Table E-17. Marina Hours of Operation (Q14)

Hours	Number	Weighted Percent	Standard Error
Business	32	48.6	5.6
Business+	26	40.3	5.5
24 Hours	8	11.1	3.0
Missing	3	.	.

Figure E-17. Marina Hours of Operation (Q14)

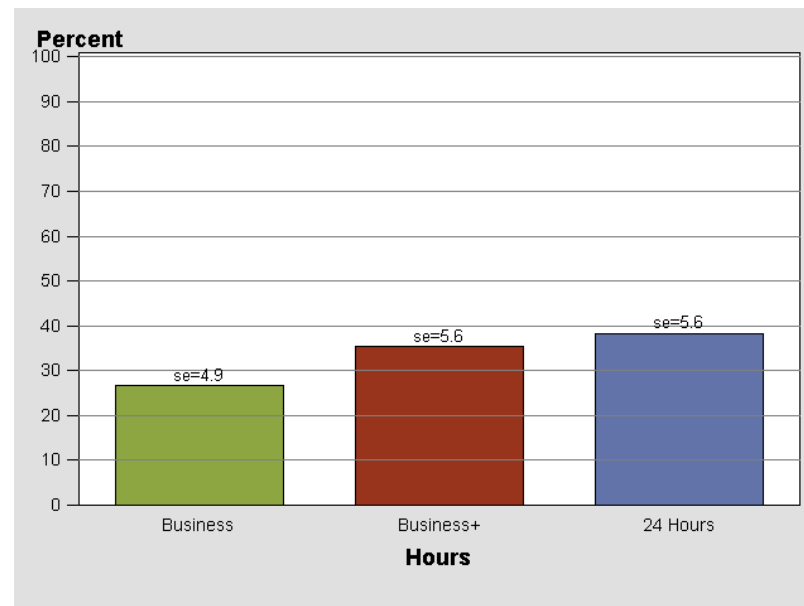


Business: <=10 hrs/day; Business+: > 10 hrs/day

Table E-18. Pumpout / Toilet Dump Hours of Operation (Q15)

Hours	Number	Weighted Percent	Standard Error
Business	17	26.6	4.9
Business+	23	35.3	5.6
24 Hours	26	38.2	5.6
Missing	3	.	.

Figure E-18. Pumpout / Toilet Dump Hours of Operation (Q15)



Business: <=10 hrs/day; Business+: > 10 hrs/day

Table E-19. Percentage of Time Pumpout / Toilet Facilities Have Been Functional (Q16)

Time Functional (%)	Number	Weighted Percent	Standard Error
100	42	63.0	5.3
75-99	22	33.1	5.3
50-74	0	0.0	0.0
26-49	0	0.0	0.0
0-25	3	3.9	2.1
Missing	2	.	.

Figure E-19. Percentage of Time Pumpout / Toilet Facilities Have Been Functional (Q16)

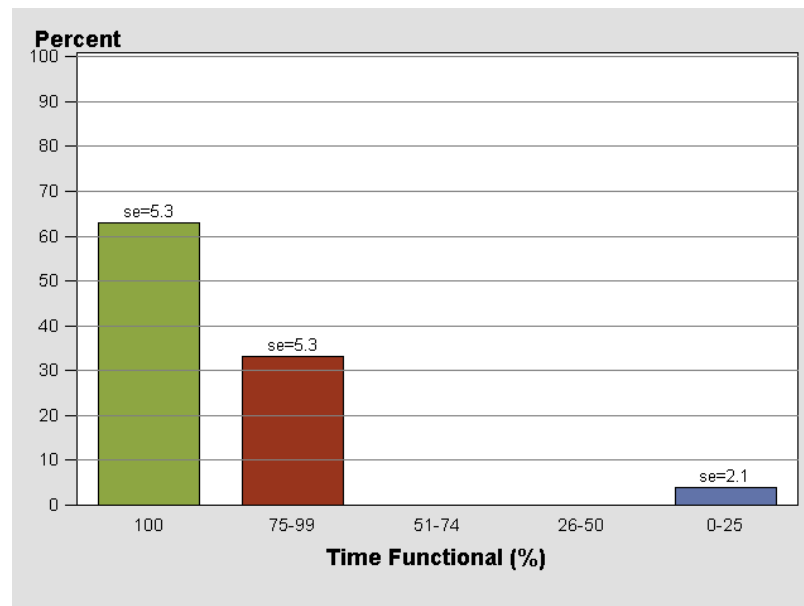
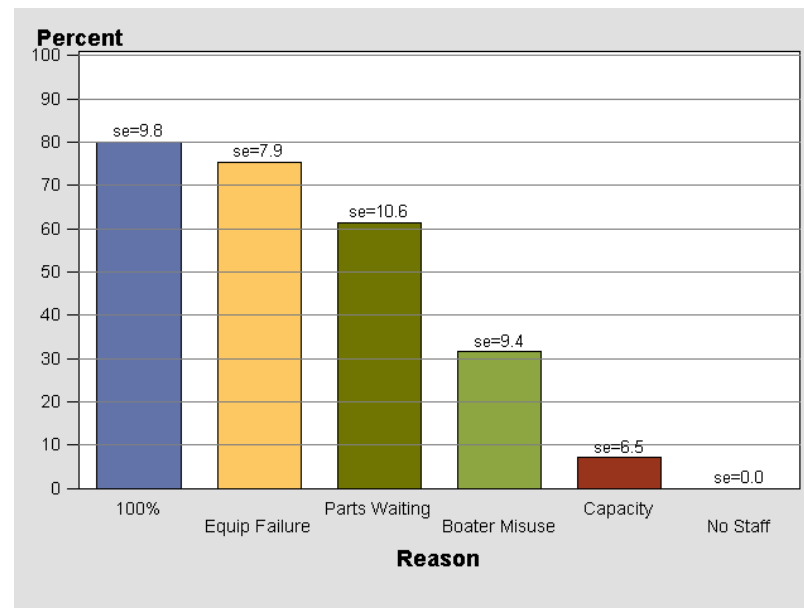


Table E-20. Reasons for Less Than 100% Functionality (Q17)

Reason	Response	Number	Weighted Percent	Standard Error
100%	Yes	15	80.0	9.8
100%	No	4	20.0	9.8
100%	Missing	24	.	.
100%	Appropriate skip	26	.	.
Equip Failure	Yes	18	75.4	7.9
Equip Failure	No	6	24.6	7.9
Equip Failure	Missing	4	.	.
Equip Failure	Appropriate skip	41	.	.
Parts Waiting	Yes	12	61.4	10.6
Parts Waiting	No	7	38.6	10.6
Parts Waiting	Missing	9	.	.
Parts Waiting	Appropriate skip	41	.	.
Boater Misuse	Yes	7	31.6	9.4
Boater Misuse	No	13	68.4	9.4
Boater Misuse	Missing	8	.	.
Boater Misuse	Appropriate skip	41	.	.
Capacity	Yes	1	7.1	6.5
Capacity	No	17	92.9	6.5
Capacity	Missing	10	.	.
Capacity	Appropriate skip	41	.	.
No Staff	Yes	0	0.0	0.0
No Staff	No	18	100.0	.
No Staff	Missing	10	.	.
No Staff	Appropriate skip	41	.	.

Figure E-20. Reasons for Less Than 100% Functionality (Q17)



multiple response item - observations may be classified in more than one bar

Table E-21. Boater Needed to Wait More Than 15 Minutes to Use Facilities During 2003 Season (Q18)

Wait Required	Number	Weighted Percent	Standard Error
Yes	15	22.9	4.6
No	48	77.1	4.6
Missing	6	.	.

Figure E-21. Boater Needed to Wait More Than 15 Minutes to Use Facilities During 2003 Season (Q18)

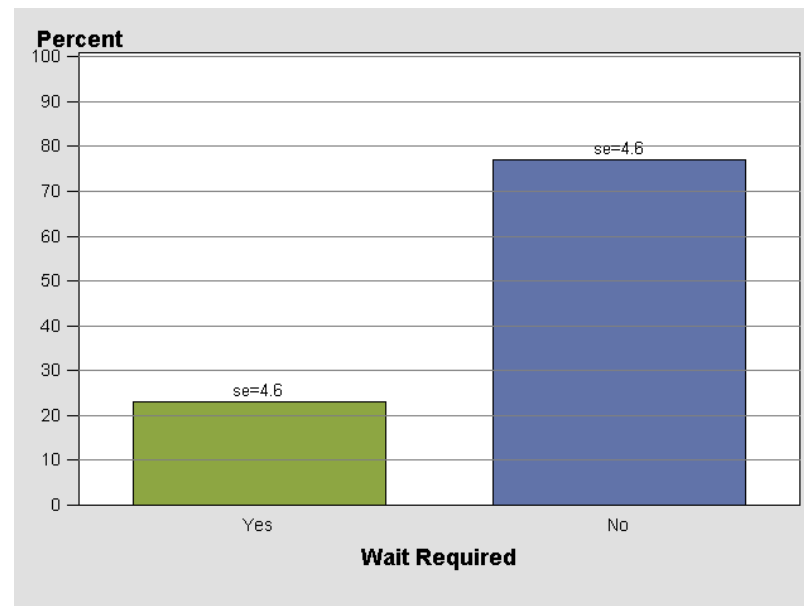


Table E-22. How Often Boaters Needed to Wait More Than 15 Minutes to Use Facilities During 2003 Season (Q19)

Wait Required	Number	Weighted Percent	Standard Error
Never	1	9.7	9.3
Rarely	5	33.8	12.2
Occasionally	4	28.8	11.0
At certain times	4	27.6	10.9
Missing	7	.	.
Appropriate skip	48	.	.

Figure E-22. How Often Boaters Needed to Wait More Than 15 Minutes to Use Facilities During 2003 Season (Q19)

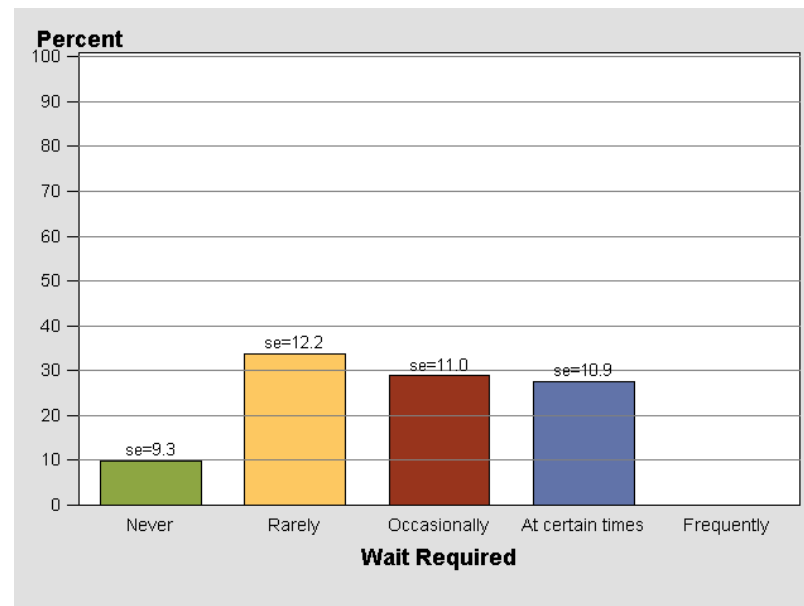


Table E-23. Number of Pumpouts or Toilet Dumps Performed (Q20A)

Pumpouts	Number	Weighted Percent	Standard Error
<100	10	30.5	8.1
100-499	12	37.0	7.9
500+	11	32.5	7.9
Missing	26	.	.
Not applicable	10	.	.

Figure E-23. Number of Pumpouts or Toilet Dumps Performed (Q20A)

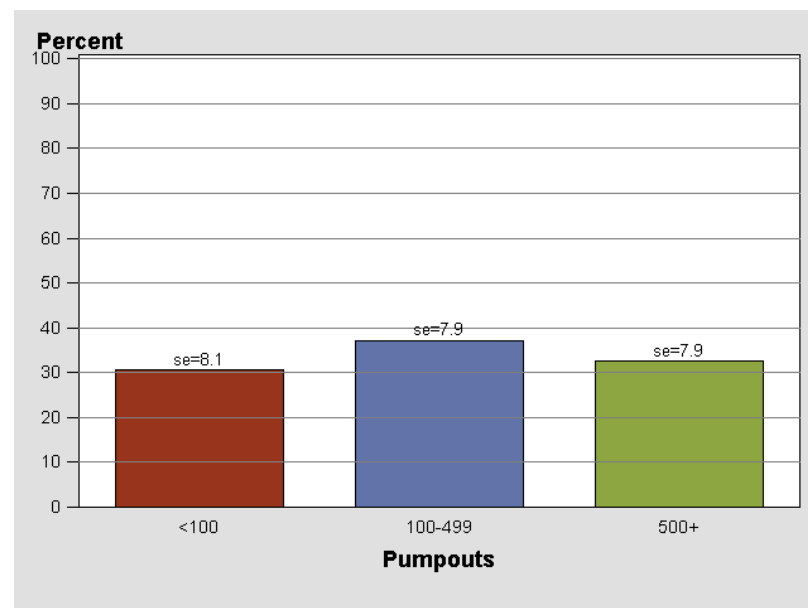


Table E-24. Gallons of Pumped Material (Q20B)

Gallons	Number	Weighted Percent	Standard Error
<5000	6	50.0	9.4
5000+	7	50.0	9.4
Missing	25	.	.
Not applicable	31	.	.

Figure E-24. Gallons of Pumped Material (Q20B)

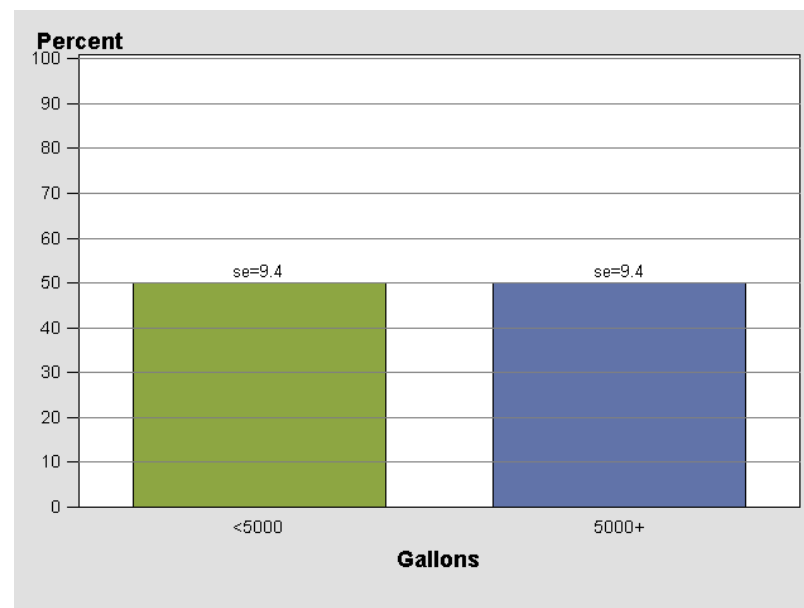


Table E-25. Knowledge that the Area on the Map is an NDZ (Q21)

Knowledge	Number	Weighted Percent	Standard Error
Yes	61	92.7	2.7
No	5	7.3	2.7
Missing	3	.	.

Figure E-25. Knowledge that the Area on the Map is an NDZ (Q21)

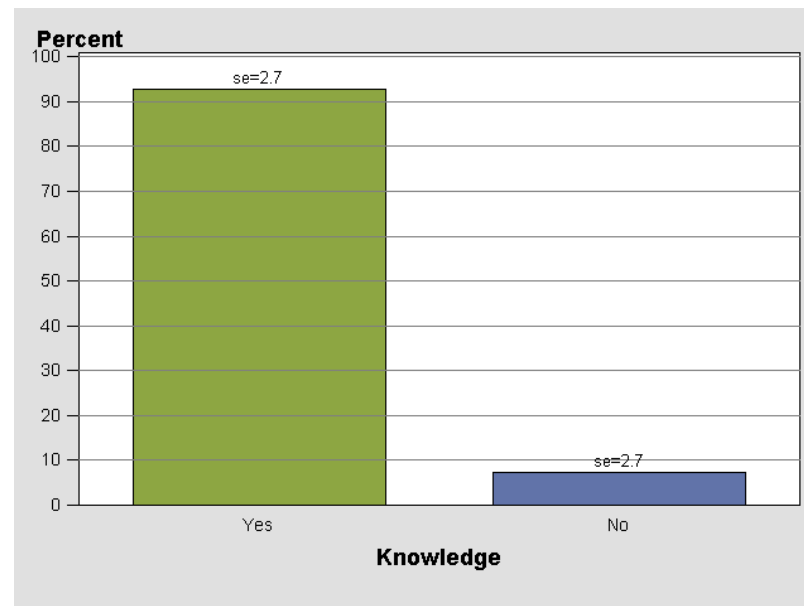
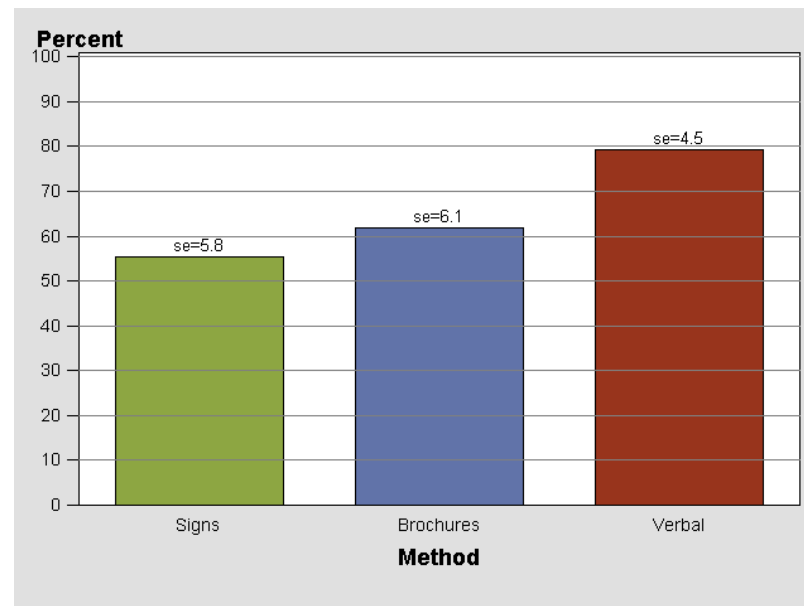


Table E-26. Methods Used to Inform Boaters of an NDZ (Q22)

Method	Response	Number	Weighted Percent	Standard Error
Signs	Yes	36	55.5	5.8
Signs	No	29	44.5	5.8
Signs	Missing	4	.	.
Brochures	Yes	41	61.9	6.1
Brochures	No	24	38.1	6.1
Brochures	Missing	4	.	.
Verbal	Yes	55	79.4	4.5
Verbal	No	14	20.6	4.5

Figure E-26. Methods Used to Inform Boaters of an NDZ (Q22)

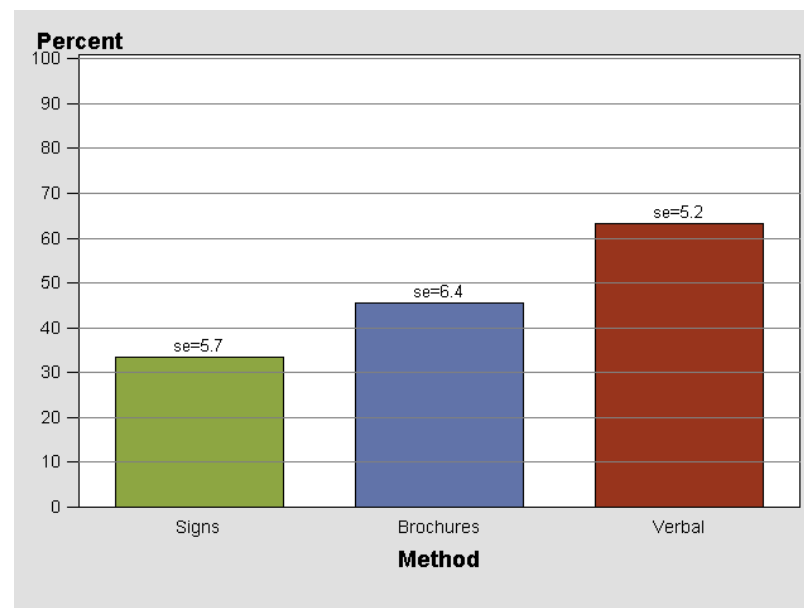


multiple response item - observations may be classified in more than one bar

Table E-27. Methods Used to Inform Boaters of Proper Operation (Q23)

Method	Response	Number	Weighted Percent	Standard Error
Signs	Yes	21	33.3	5.7
Signs	No	43	66.7	5.7
Signs	Missing	5	.	.
Brochures	Yes	28	45.6	6.4
Brochures	No	34	54.4	6.4
Brochures	Missing	7	.	.
Verbal	Yes	42	63.2	5.2
Verbal	No	23	36.8	5.2
Verbal	Missing	4	.	.

Figure E-27. Methods Used to Inform Boaters of Proper Operation (Q23)

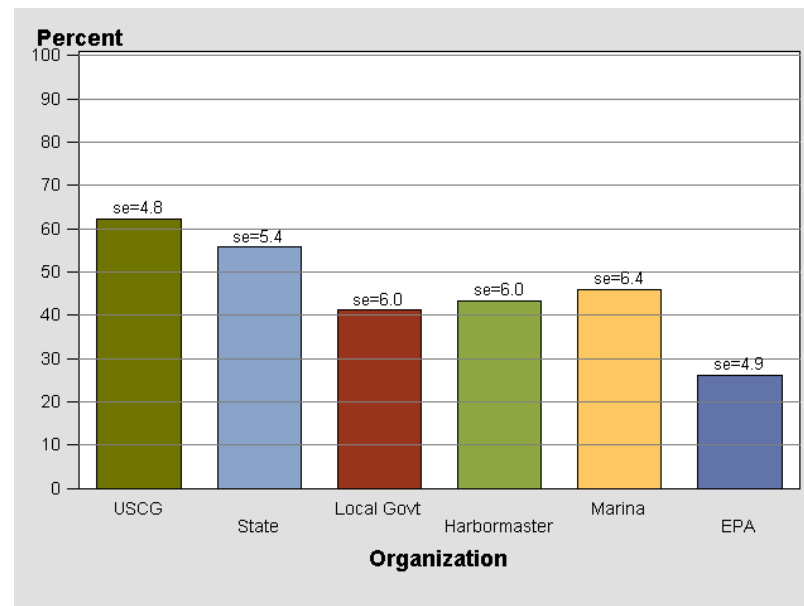


multiple response item - observations may be classified in more than one bar

Table E-28. Organization Individual Believes has Responsibility to Enforce NDZ (Q24)

Organization	Response	Number	Weighted Percent	Standard Error
USCG	Yes	41	62.3	4.8
USCG	No	13	18.5	4.6
USCG	Don't Know	13	19.3	4.6
USCG	Missing	2	.	.
State	Yes	35	55.7	5.4
State	No	8	13.5	4.6
State	Don't Know	18	30.7	5.5
State	Missing	8	.	.
Local Govt	Yes	26	41.2	6.0
Local Govt	No	18	30.5	5.2
Local Govt	Don't Know	16	28.3	7.0
Local Govt	Missing	9	.	.
Harbormaster	Yes	28	43.3	6.0
Harbormaster	No	26	42.5	4.9
Harbormaster	Don't Know	9	14.2	4.4
Harbormaster	Missing	6	.	.
Marina	Yes	29	46.0	6.4
Marina	No	23	35.3	5.6
Marina	Don't Know	11	18.7	5.0
Marina	Missing	6	.	.
EPA	Yes	15	26.1	4.9
EPA	No	16	25.5	5.3
EPA	Don't Know	29	48.3	6.7
EPA	Missing	9	.	.

Figure E-28. Organization Individual Believes has Responsibility to Enforce NDZ (Q24)



multiple response item - observations may be classified in more than one bar

Table E-29. Aware of Anyone Receiving Citation for Discharging Sewage in NDZ (Q25)

Aware	Number	Weighted Percent	Standard Error
Yes	7	9.9	1.6
No	60	90.1	1.6
Missing	2	.	.

Figure E-29. Aware of Anyone Receiving Citation for Discharging Sewage in NDZ (Q25)

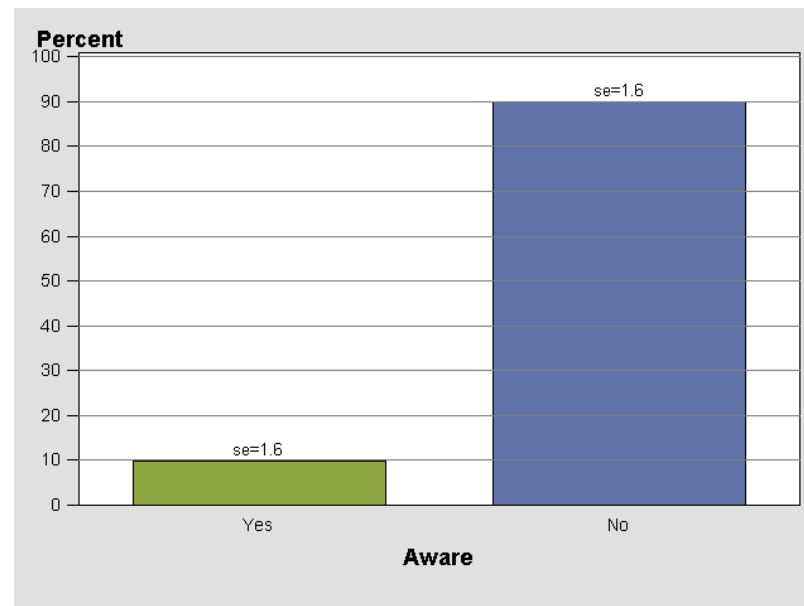
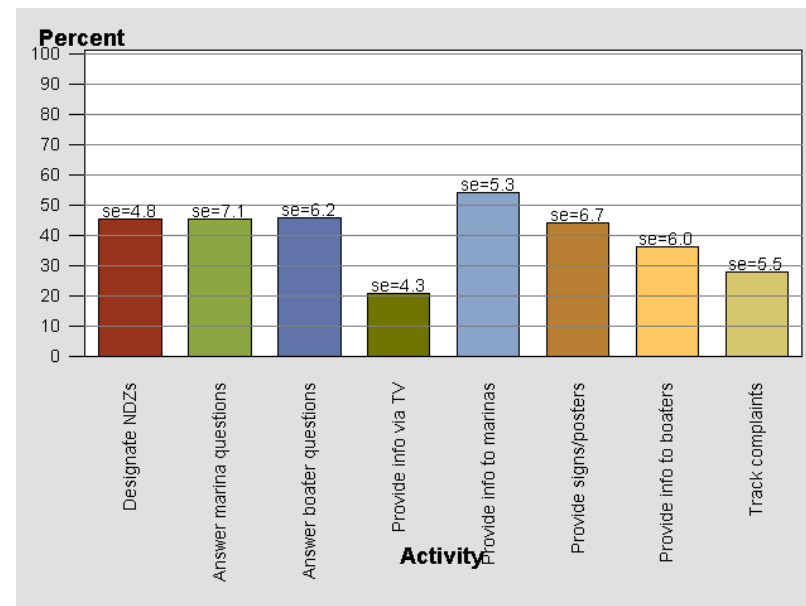


Table E-30. Does the State Do Any of the Following (Q26)

Activity	Response	Number	Weighted Percent	Standard Error
Designate NDZs	Yes	33	45.2	4.8
Designate NDZs	No	12	17.2	4.3
Designate NDZs	Don't Know	24	37.6	6.2
Answer marina questions	Yes	33	45.5	7.1
Answer marina questions	No	5	7.4	2.9
Answer marina questions	Don't Know	31	47.2	7.3
Answer boater questions	Yes	33	45.9	6.2
Answer boater questions	No	5	7.7	3.0
Answer boater questions	Don't Know	30	46.4	7.4
Answer boater questions	Missing	1	.	.
Provide info via TV	Yes	14	20.6	4.3
Provide info via TV	No	33	47.8	5.3
Provide info via TV	Don't Know	21	31.6	5.3
Provide info via TV	Missing	1	.	.
Provide info to marinas	Yes	38	54.0	5.3
Provide info to marinas	No	18	27.0	4.5
Provide info to marinas	Don't Know	12	18.9	5.2
Provide info to marinas	Missing	1	.	.
Provide signs/posters	Yes	32	44.1	6.7
Provide signs/posters	No	15	23.2	4.5
Provide signs/posters	Don't Know	21	32.7	6.5
Provide signs/posters	Missing	1	.	.
Provide info to boaters	Yes	25	36.3	6.0
Provide info to boaters	No	11	16.2	3.8
Provide info to boaters	Don't Know	32	47.5	6.8
Provide info to boaters	Missing	1	.	.
Track complaints	Yes	20	27.9	5.5
Track complaints	No	11	17.8	3.7
Track complaints	Don't Know	33	54.3	6.0
Track complaints	Missing	5	.	.

Figure E-30. Does the State Do Any of the Following (Q26)

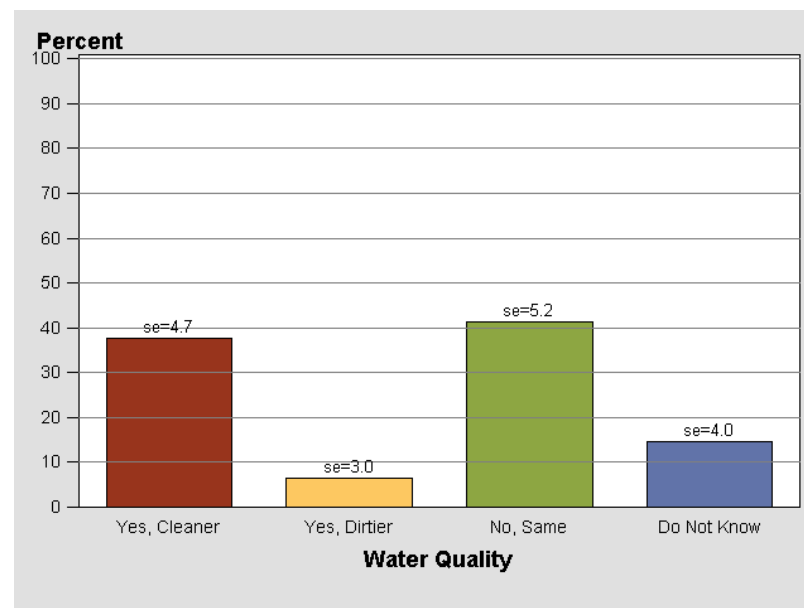


multiple response item - observations may be classified in more than one bar

Table E-31. Notice of the Change in the Water Quality Since Area was Designated an NDZ (Q27)

Water Quality	Number	Weighted Percent	Standard Error
Yes, Cleaner	24	37.7	4.7
Yes, Dirtier	4	6.4	3.0
No, Same	26	41.3	5.2
Do Not Know	11	14.6	4.0
Missing	4	.	.

Figure E-31. Notice of the Change in the Water Quality Since Area was Designated an NDZ (Q27)



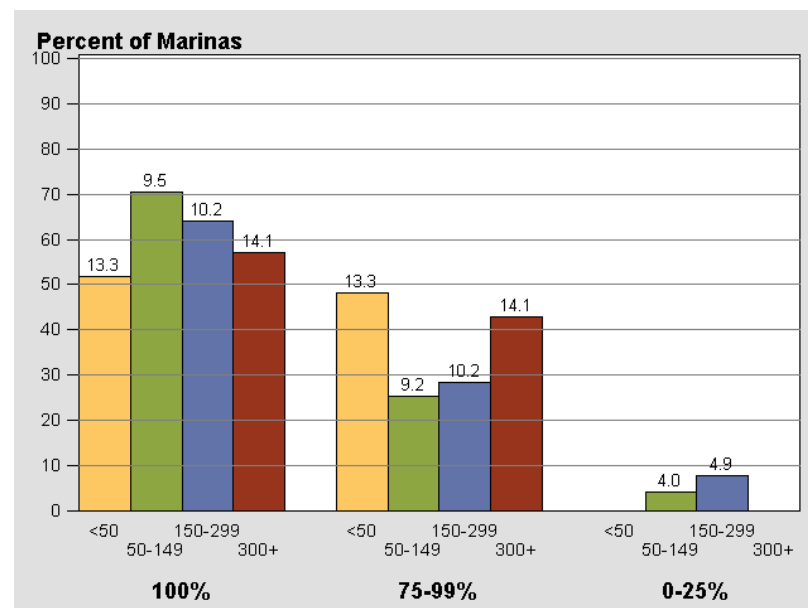
APPENDIX E-2

Marina Survey Results for Selected Combinations of Survey Questions

Table E-32. Number of Slips by Percent of Time Facilities were Functional (Q1 by Q16)

Number of Slips	Percent of Time Facilities were Functional	Number	Weighted Percent	Standard Error
<50	100%	6	51.9	13.3
<50	75-99%	6	48.1	13.3
<50	0-25%	0	0.0	0.0
<50	Missing	1	.	.
50-149	100%	13	70.6	9.5
50-149	75-99%	5	25.2	9.2
50-149	0-25%	1	4.2	4.0
50-149	Missing	1	.	.
150-299	100%	15	64.1	10.2
150-299	75-99%	6	28.3	10.2
150-299	0-25%	2	7.6	4.9
300+	100%	7	57.1	14.1
300+	75-99%	5	42.9	14.1
300+	0-25%	0	0.0	0.0
Missing	100%	1	.	.

Figure E-32. Number of Slips by Percent of Time Facilities were Functional (Q1 by Q16)

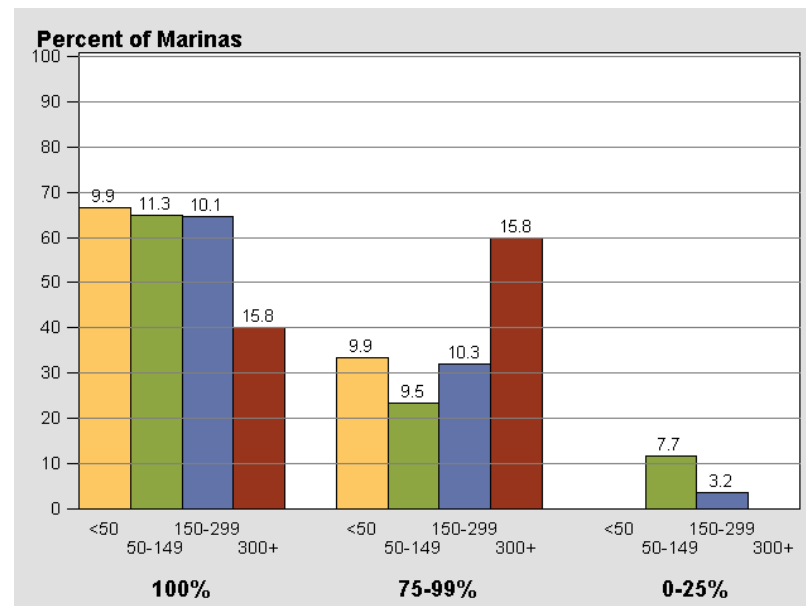


Number of Slips

Table E-33. Number of Boats by Percent of Time Facilities were Functional (Q2 by Q16)

Number of Boats	Percent of Time Facilities were Functional	Number	Weighted Percent	Standard Error
<50	100%	13	66.7	9.9
<50	75-99%	7	33.3	9.9
<50	0-25%	0	0.0	0.0
<50	Missing	1	.	.
50-149	100%	10	65.0	11.3
50-149	75-99%	4	23.3	9.5
50-149	0-25%	2	11.6	7.7
50-149	Missing	1	.	.
150-299	100%	14	64.7	10.1
150-299	75-99%	6	31.9	10.3
150-299	0-25%	1	3.5	3.2
300+	100%	4	40.0	15.8
300+	75-99%	5	60.0	15.8
300+	0-25%	0	0.0	0.0
Missing	100%	1	.	.

Figure E-33. Number of Boats by Percent of Time Facilities were Functional (Q2 by Q16)

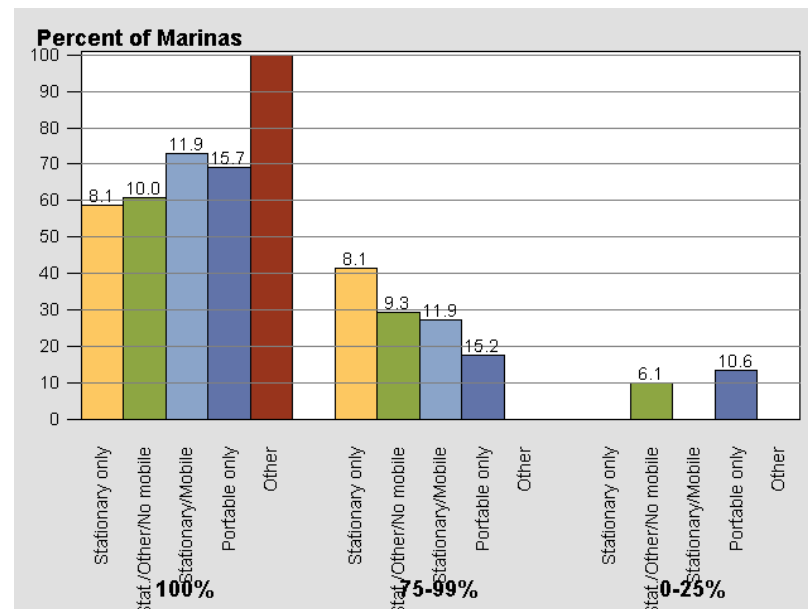


Number of Boats

Table E-34. Types of Facilities by Percent of Time Facilities were Functional (Q3 by Q16)

Types of Facilities	Percent of Time Facilities were Functional	Number	Weighted Percent	Standard Error
Stationary only	100%	17	58.6	8.1
Stationary only	75-99%	12	41.4	8.1
Stationary only	0-25%	0	0.0	0.0
Stat./Other/No mobile	100%	11	60.8	10.0
Stat./Other/No mobile	75-99%	6	29.4	9.3
Stat./Other/No mobile	0-25%	2	9.8	6.1
Stationary/Mobile	100%	9	72.9	11.9
Stationary/Mobile	75-99%	3	27.1	11.9
Stationary/Mobile	0-25%	0	0.0	0.0
Stationary/Mobile	Missing	2	.	.
Portable only	100%	4	69.2	15.7
Portable only	75-99%	1	17.5	15.2
Portable only	0-25%	1	13.3	10.6
Other	100%	1	100.0	.

Figure E-34. Types of Facilities by Percent of Time Facilities were Functional (Q3 by Q16)

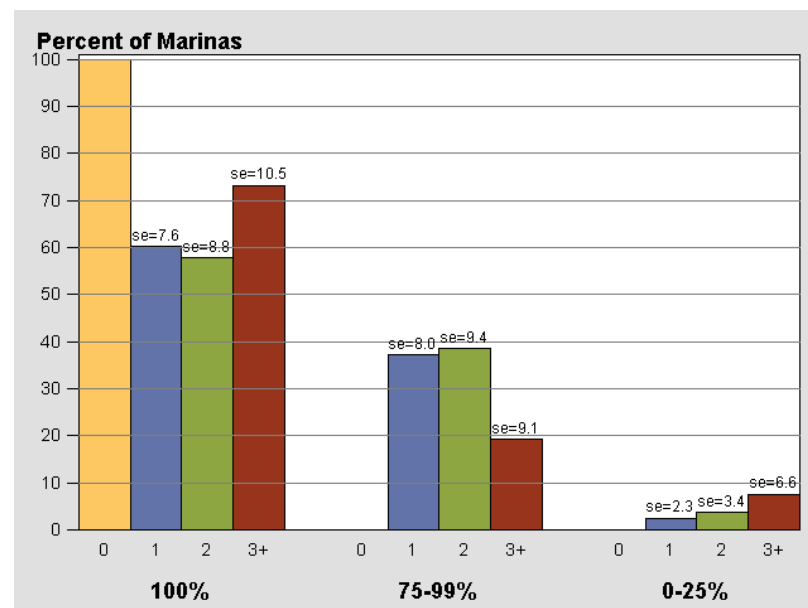


Types of Facilities

Table E-35. Number of Facilities by Percent of Time Facilities were Functional (Q3 by Q16)

Number of Facilities	Percent of Time Facilities were Functional	Number	Weighted Percent	Standard Error
0	100%	1	100.0	.
1	100%	18	60.2	7.6
1	75-99%	11	37.3	8.0
1	0-25%	1	2.5	2.3
2	100%	11	57.8	8.8
2	75-99%	8	38.5	9.4
2	0-25%	1	3.7	3.4
2	Missing	2	.	.
3+	100%	12	73.2	10.5
3+	75-99%	3	19.2	9.1
3+	0-25%	1	7.6	6.6

Figure E-35. Number of Facilities by Percent of Time Facilities were Functional (Q3 by Q16)

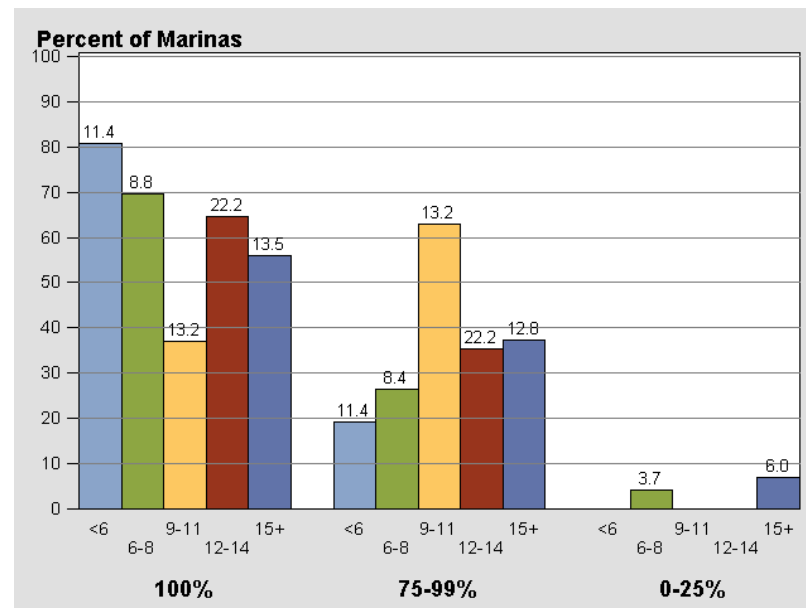


Number of Facilities

Table E-36. Maximum Vessel Draft (feet) by Percent of Time Facilities were Functional (Q6 by Q16)

Maximum Vessel Draft (feet)	Percent of Time Facilities were Functional	Number	Weighted Percent	Standard Error
<6	100%	8	81.0	11.4
<6	75-99%	2	19.0	11.4
<6	0-25%	0	0.0	0.0
6-8	100%	19	69.6	8.8
6-8	75-99%	7	26.3	8.4
6-8	0-25%	1	4.1	3.7
9-11	100%	5	36.9	13.2
9-11	75-99%	7	63.1	13.2
9-11	0-25%	0	0.0	0.0
12-14	100%	3	64.7	22.2
12-14	75-99%	2	35.3	22.2
12-14	0-25%	0	0.0	0.0
15+	100%	6	55.9	13.5
15+	75-99%	4	37.2	12.8
15+	0-25%	1	6.8	6.0
Missing	100%	1	.	.
Missing	0-25%	1	.	.
Missing	Missing	2	.	.

Figure E-36. Maximum Vessel Draft (feet) by Percent of Time Facilities were Functional (Q6 by Q16)

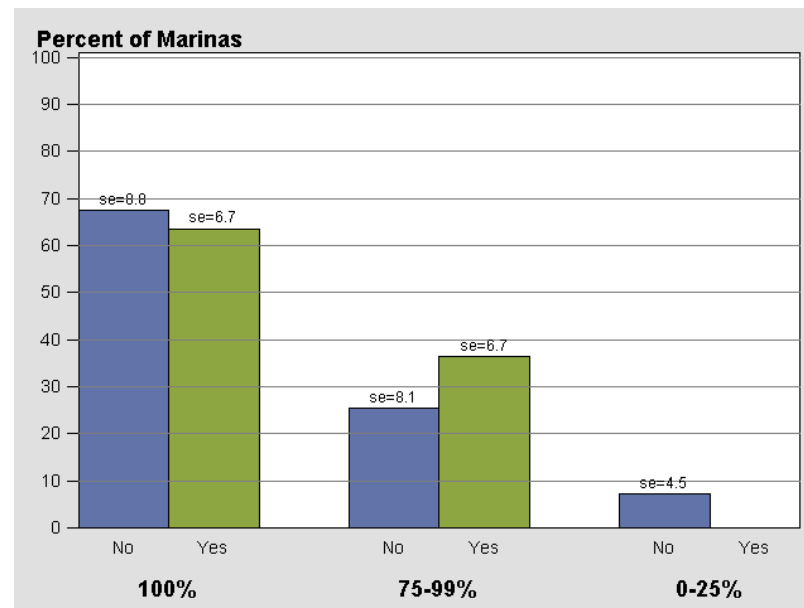


Maximum Vessel Draft (feet)

Table E-37. Receipt of CVA Money by Percent of Time Facilities were Functional (Q7 by Q16)

Receipt of CVA Money	Percent of Time Facilities were Functional	Number	Weighted Percent	Standard Error
Yes	100%	24	63.6	6.7
Yes	75-99%	14	36.4	6.7
Yes	0-25%	0	0.0	0.0
No	100%	17	67.5	8.8
No	75-99%	6	25.4	8.1
No	0-25%	2	7.1	4.5
Missing	100%	1	.	.
Missing	75-99%	2	.	.
Missing	0-25%	1	.	.
Missing	Missing	2	.	.

Figure E-37. Receipt of CVA Money by Percent of Time Facilities were Functional (Q7 by Q16)

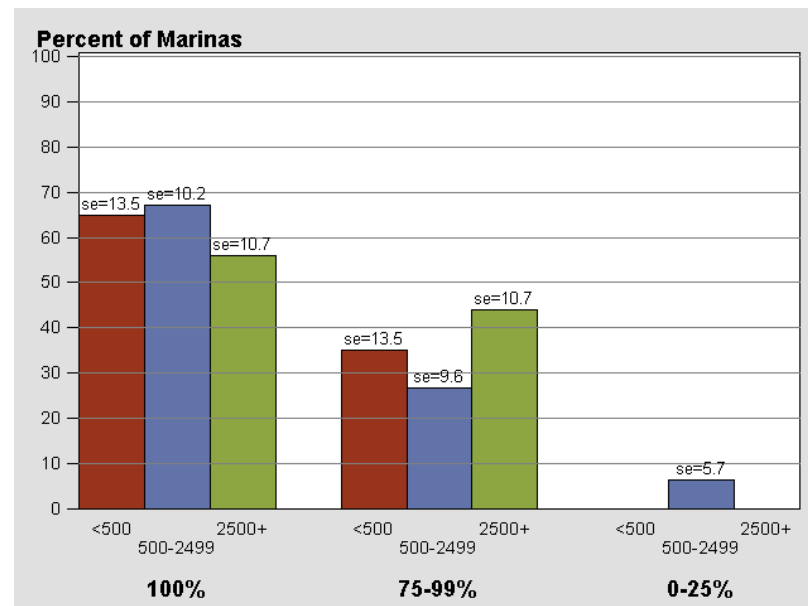


Receipt of CVA Money

Table E-38. Annual Operating Costs (\$) by Percent of Time Facilities were Functional (Q9 by Q16)

Annual Operating Costs (\$)	Percent of Time Facilities were Functional	Number	Weighted Percent	Standard Error
<500	100%	8	65.0	13.5
<500	75-99%	4	35.0	13.5
<500	0-25%	0	0.0	0.0
500-2499	100%	11	67.0	10.2
500-2499	75-99%	4	26.6	9.6
500-2499	0-25%	1	6.4	5.7
2500+	100%	8	56.0	10.7
2500+	75-99%	7	44.0	10.7
2500+	0-25%	0	0.0	0.0
Missing	100%	15	.	.
Missing	75-99%	7	.	.
Missing	0-25%	2	.	.
Missing	Missing	2	.	.

Figure E-38. Annual Operating Costs (\$) by Percent of Time Facilities were Functional (Q9 by Q16)

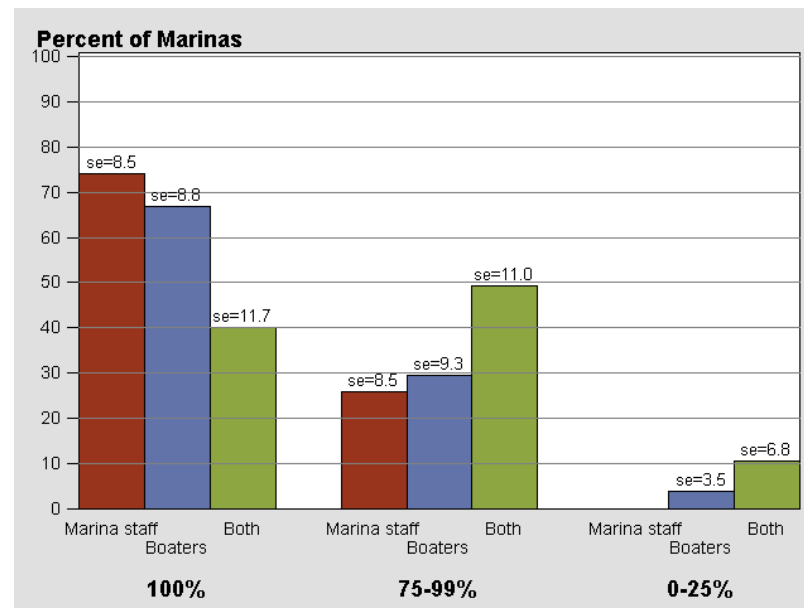


Annual Operating Costs (\$)

Table E-39. Who Performs Pumpout by Percent of Time Facilities were Functional (Q10 by Q16)

Who Performs Pumpout	Percent of Time Facilities were Functional	Number	Weighted Percent	Standard Error
Marina staff	100%	21	74.2	8.5
Marina staff	75-99%	7	25.8	8.5
Marina staff	0-25%	0	0.0	0.0
Boaters	100%	13	66.9	8.8
Boaters	75-99%	6	29.4	9.3
Boaters	0-25%	1	3.8	3.5
Both	100%	8	40.2	11.7
Both	75-99%	9	49.3	11.0
Both	0-25%	2	10.5	6.8
Missing	Missing	2	.	.

Figure E-39. Who Performs Pumpout by Percent of Time Facilities were Functional (Q10 by Q16)

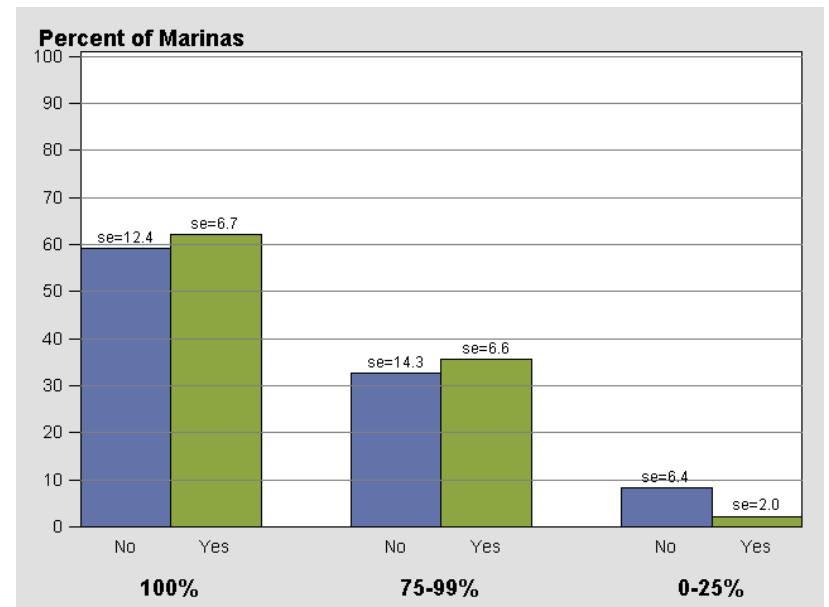


Who Performs Pumpout

Table E-40. Whether Staff is Trained by Percent of Time Facilities were Functional (Q11 by Q16)

Whether Staff is Trained	Percent of Time Facilities were Functional	Number	Weighted Percent	Standard Error
Yes	100%	30	62.1	6.7
Yes	75-99%	17	35.6	6.6
Yes	0-25%	1	2.3	2.0
No	100%	6	59.2	12.4
No	75-99%	3	32.6	14.3
No	0-25%	1	8.2	6.4
Missing	100%	6	.	.
Missing	75-99%	2	.	.
Missing	0-25%	1	.	.
Missing	Missing	2	.	.

Figure E-40. Whether Staff is Trained by Percent of Time Facilities were Functional (Q11 by Q16)

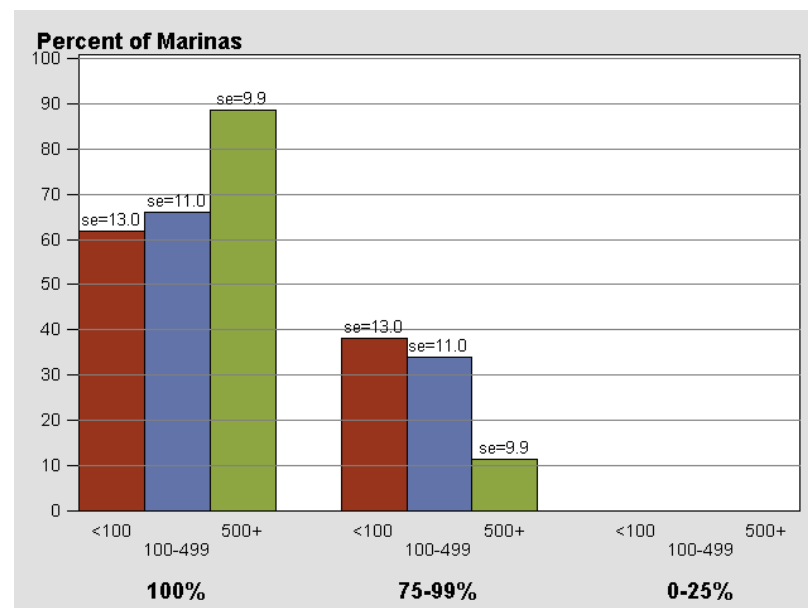


Whether Staff is Trained

Table E-41. Number of Pumpout Operations by Percent of Time Facilities were Functional (Q20 by Q16)

Number of Pumpout Operations	Percent of Time Facilities were Functional	Number	Weighted Percent	Standard Error
<100	100%	6	61.9	13.0
<100	75-99%	4	38.1	13.0
<100	0-25%	0	0.0	0.0
100-499	100%	8	66.0	11.0
100-499	75-99%	4	34.0	11.0
100-499	0-25%	0	0.0	0.0
500+	100%	10	88.7	9.9
500+	75-99%	1	11.3	9.9
500+	0-25%	0	0.0	0.0
Missing	100%	13	.	.
Missing	75-99%	8	.	.
Missing	0-25%	3	.	.
Missing	Missing	2	.	.
Not applicable	100%	5	.	.
Not applicable	75-99%	5	.	.

Figure E-41. Number of Pumpout Operations by Percent of Time Facilities were Functional (Q20 by Q16)



Number of Pumpout Operations

Table E-42. Gallons Pumped by Percent of Time Facilities were Functional (Q20 by Q16)

Gallons Pumped	Percent of Time Facilities were Functional	Number	Weighted Percent	Standard Error
<5000	100%	3	51.8	19.6
<5000	75-99%	3	48.2	19.6
<5000	0-25%	0	0.0	0.0
5000+	100%	3	45.3	19.8
5000+	75-99%	4	54.7	19.8
5000+	0-25%	0	0.0	0.0

Figure E-42. Gallons Pumped by Percent of Time Facilities were Functional (Q20 by Q16)

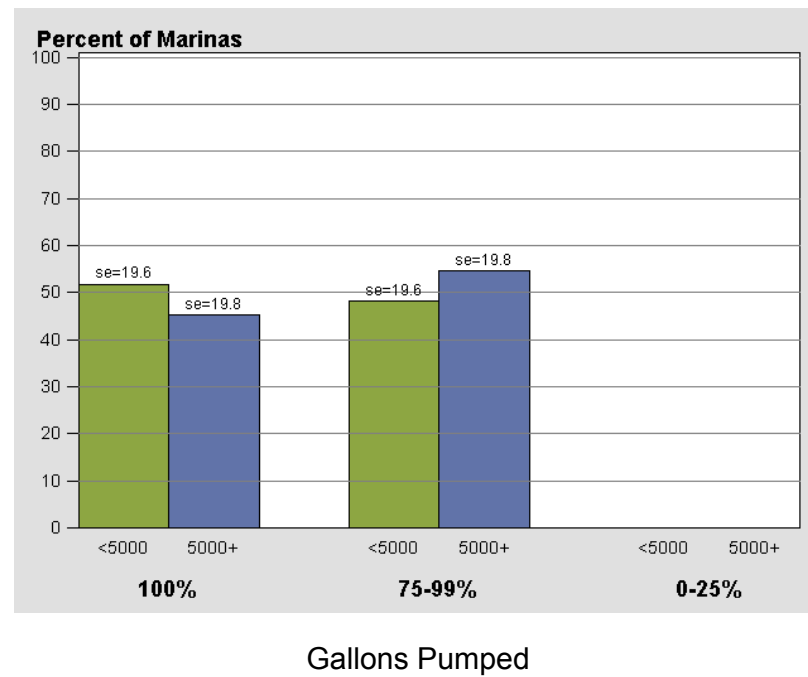
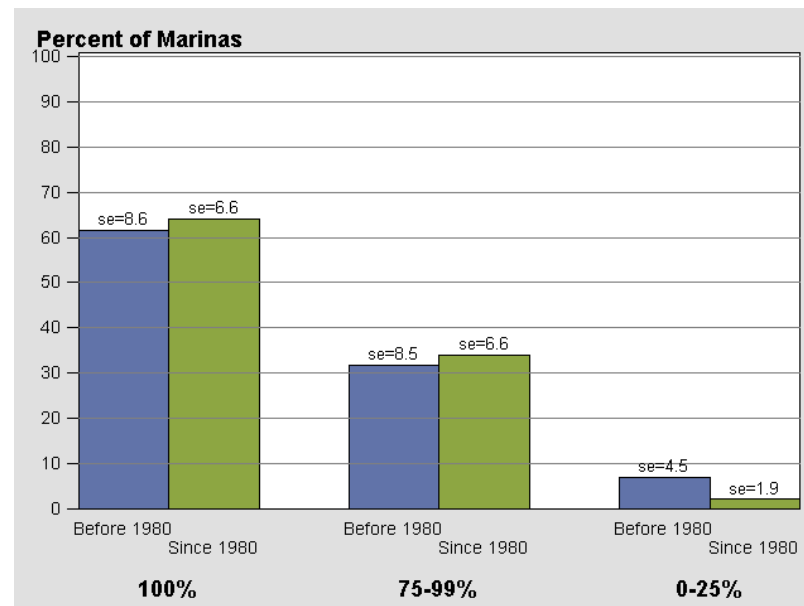


Table E-43. NDZ Year of Origination by Percent of Time Facilities were Functional (NDZ Age by Q16)

NDZ Year of Origination	Percent of Time Facilities were Functional	Number	Weighted Percent	Standard Error
Before 1980	100%	15	61.5	8.6
Before 1980	75-99%	8	31.8	8.5
Before 1980	0-25%	2	6.8	4.5
Since 1980	100%	27	64.1	6.6
Since 1980	75-99%	14	33.9	6.6
Since 1980	0-25%	1	2.0	1.9
Since 1980	Missing	2	.	.

Figure E-43. NDZ Year of Origination by Percent of Time Facilities were Functional (NDZ Age by Q16)

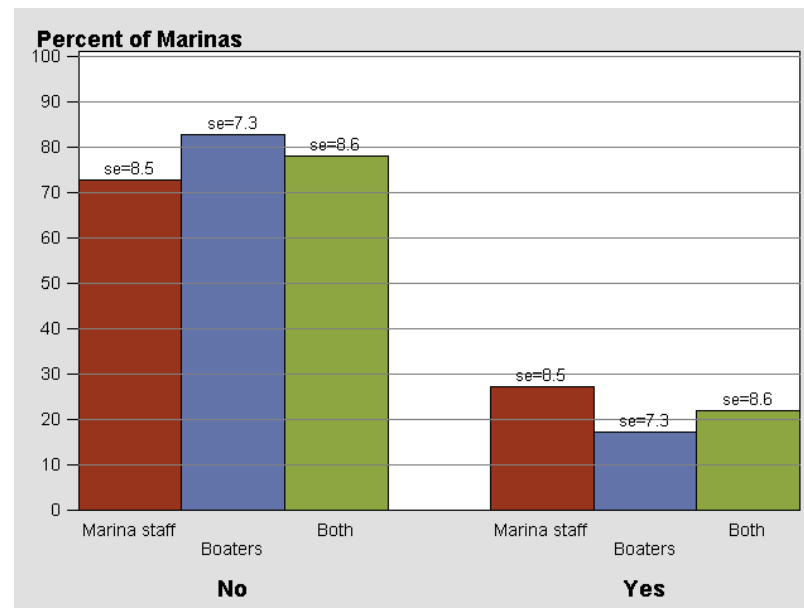


NDZ Year of Origination

Table E-44. Who Performs Pumpout by Wait Required (Q10 by Q18)

Who Performs Pumpout	Wait Required	Number	Weighted Percent	Standard Error
Marina staff	Yes	7	27.2	8.5
Marina staff	No	20	72.8	8.5
Marina staff	Missing	1	.	.
Boaters	Yes	4	17.1	7.3
Boaters	No	14	82.9	7.3
Boaters	Missing	2	.	.
Both	Yes	4	22.0	8.6
Both	No	14	78.0	8.6
Both	Missing	1	.	.
Missing	Missing	2	.	.

Figure E-44. Who Performs Pumpout by Wait Required (Q10 by Q18)

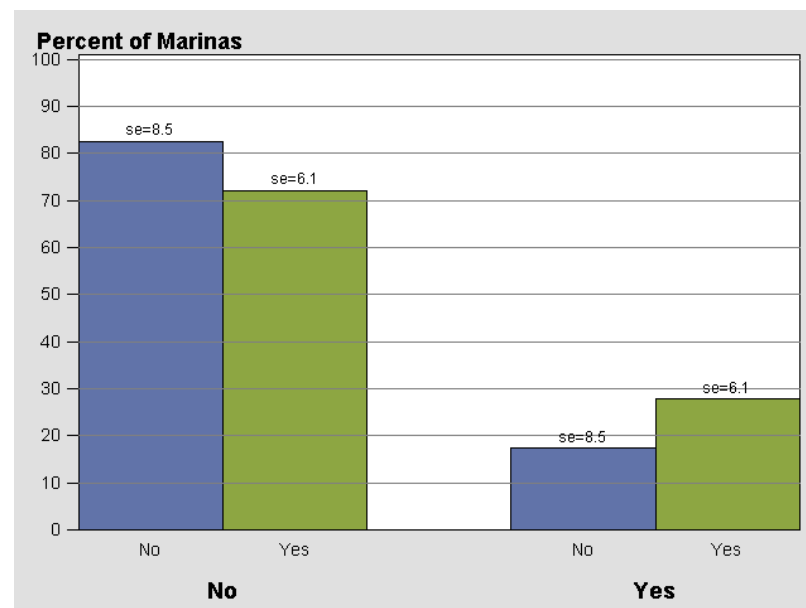


Who Performs Pumpout

Table E-45. Whether Staff is Trained by Wait Required (Q11 by Q18)

Whether Staff is Trained	Wait Required	Number	Weighted Percent	Standard Error
Yes	Yes	13	27.8	6.1
Yes	No	34	72.2	6.1
Yes	Missing	1	.	.
No	Yes	2	17.4	8.5
No	No	7	82.6	8.5
No	Missing	1	.	.
Missing	No	7	.	.
Missing	Missing	4	.	.

Figure E-45. Whether Staff is Trained by Wait Required (Q11 by Q18)



Whether Staff is Trained