

US EPA ARCHIVE DOCUMENT



This document is one of the project summaries from the EPA's Targeted Watershed Grants 2005 Annual Report published in December 2005. The reference number is EPA 840-R-06-001. You can find the entire document at <http://www.epa.gov/twg>.

EPA'S TARGETED WATERSHED GRANTS 2005 ANNUAL REPORT

December 2005

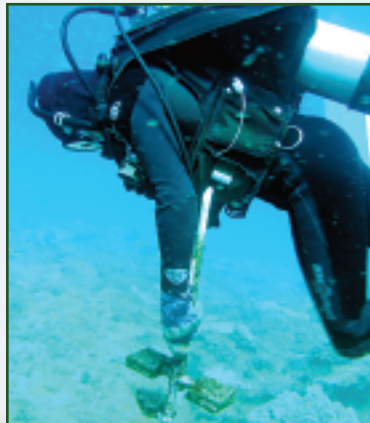


Hanalei Bay

HI

MAJOR ENVIRONMENTAL CHALLENGES

- Landslides
- Fragile coral reef ecosystem
- Excess sediments and nutrients
- Feral pig landscape damage
- Loss of habitat and aquatic life
- High levels of fecal coliform indicating bacteria
- Agriculture and ranching activities
- Groundwater contamination by sewage



Scientific diver removes coral larval panels in Hanalei Bay each summer to estimate coral recruitment rates.

PROJECT HIGHLIGHTS

The Watershed Hui is committed to restoring the health of their watershed through a community-based approach geared towards improving wastewater treatment of individual septic systems and a centralized wastewater facility. Additional projects are aimed at extensive public involvement, research, and education. With the help of many diverse stakeholders, the Hui has:

- Solicited community input on a prioritized list of cesspools to be upgraded to septic systems
- Finalized site engineering of replacement septic systems and initiated construction on key sites
- Continued to work with government agencies, local organizations, and university scientists to assess non-point sources of pollution on a watershed basis
- Worked with commercial firms to design various centralized wastewater treatment options
- Solicited community input and achieved consensus for long-term solutions, including the use of constructed wetlands as a method of treatment



Hydrologist Matt Rosener measures streamflow in a small tributary of the Hanalei River.

2003 Grantee **UPDATE**

"The work the Hui is doing with the money from EPA is helping us learn about the problems in the water. Fixing these will result in more fish for our families."

**– Jeff Chandler
fisherman and Hui
member and Chair
of Hui Ho'omalū I
Ka'Aina, a local
community
stewardship group**