

The State of Lake Michigan

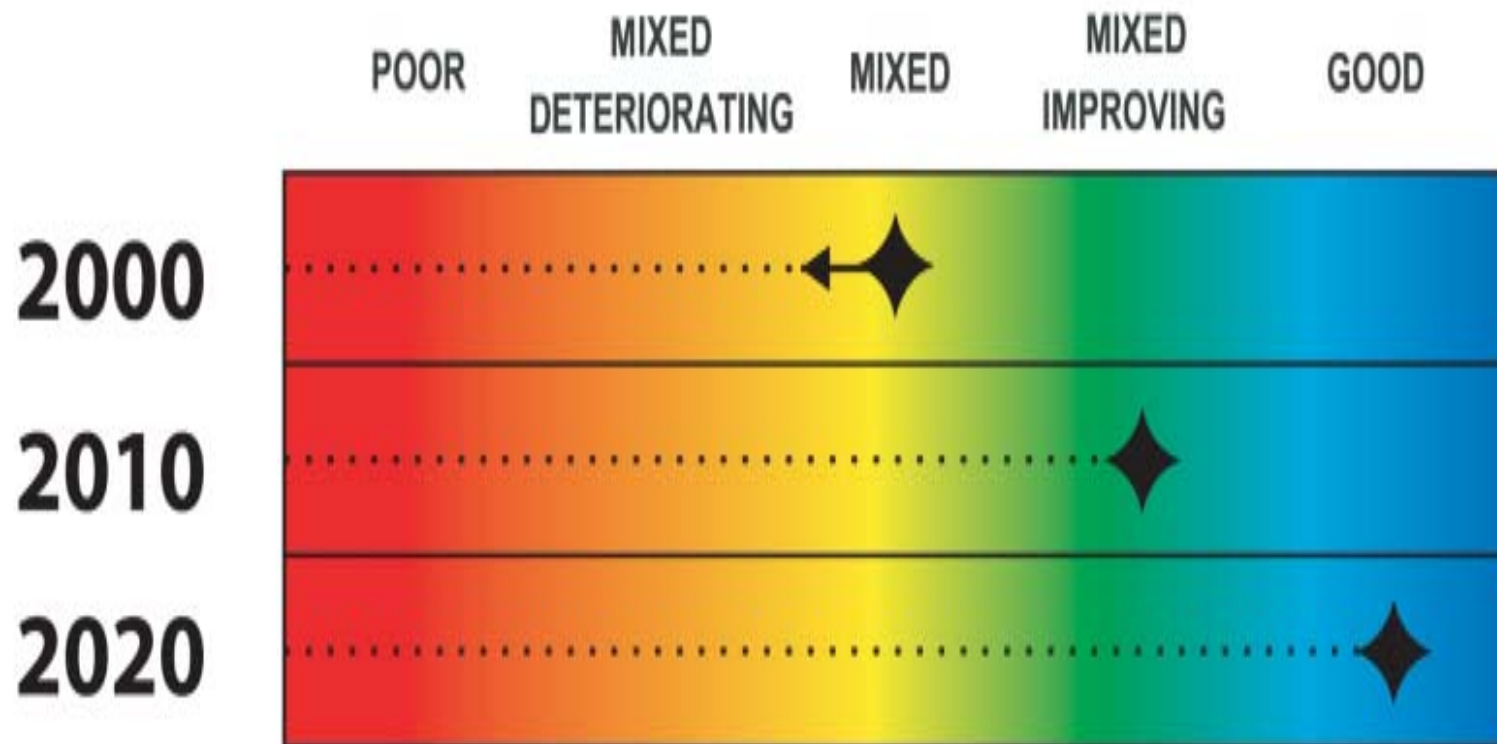
Bob Kavetsky
US Fish and Wildlife Service



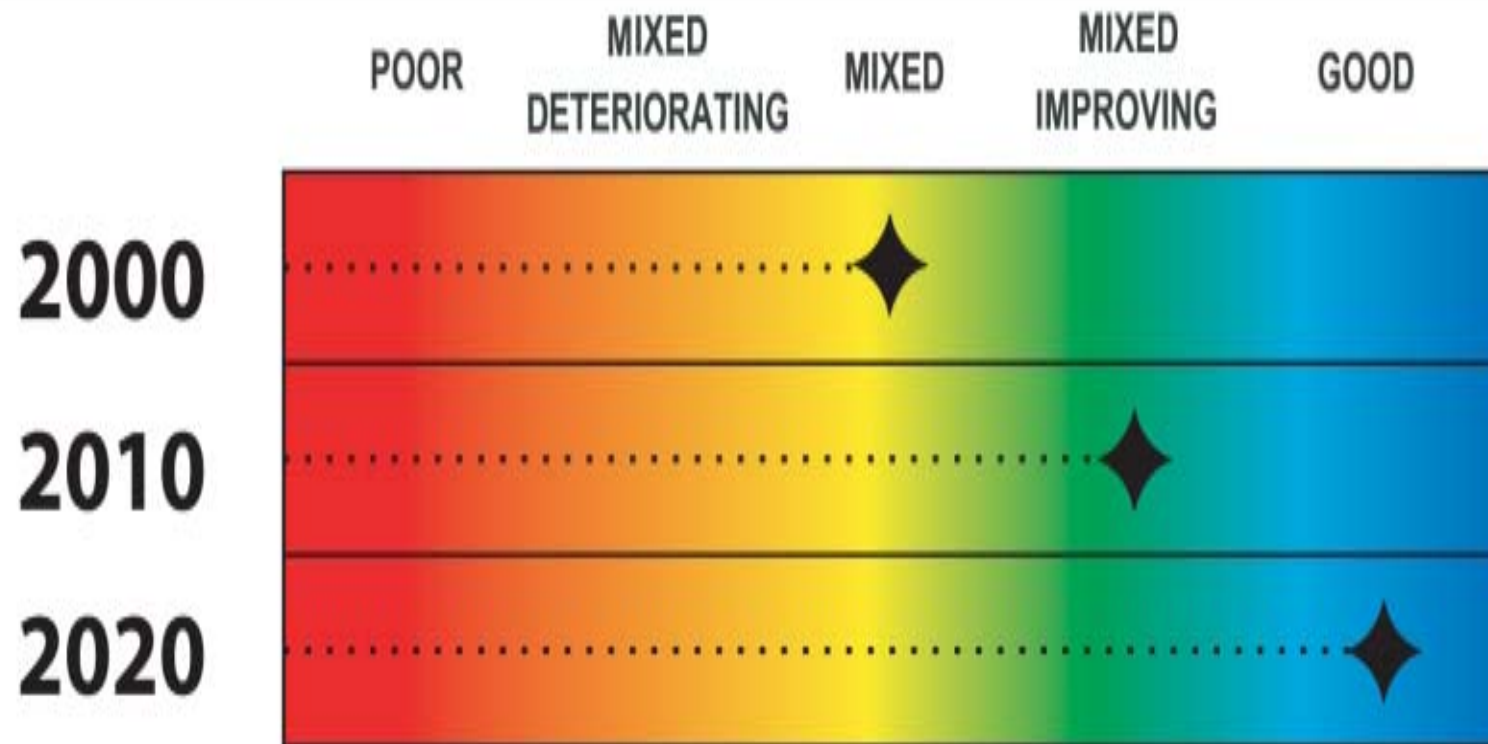
Outline

- Status based on LaMP 2002
- Two LaMP goals related to Biological Integrity
- Examples of pertinent issues in state, stressor and human response themes
- Celebrate successes

Are all habitats healthy, naturally diverse,
and sufficient to sustain viable biological
communities?



Are Non-native Species controlled and managed?



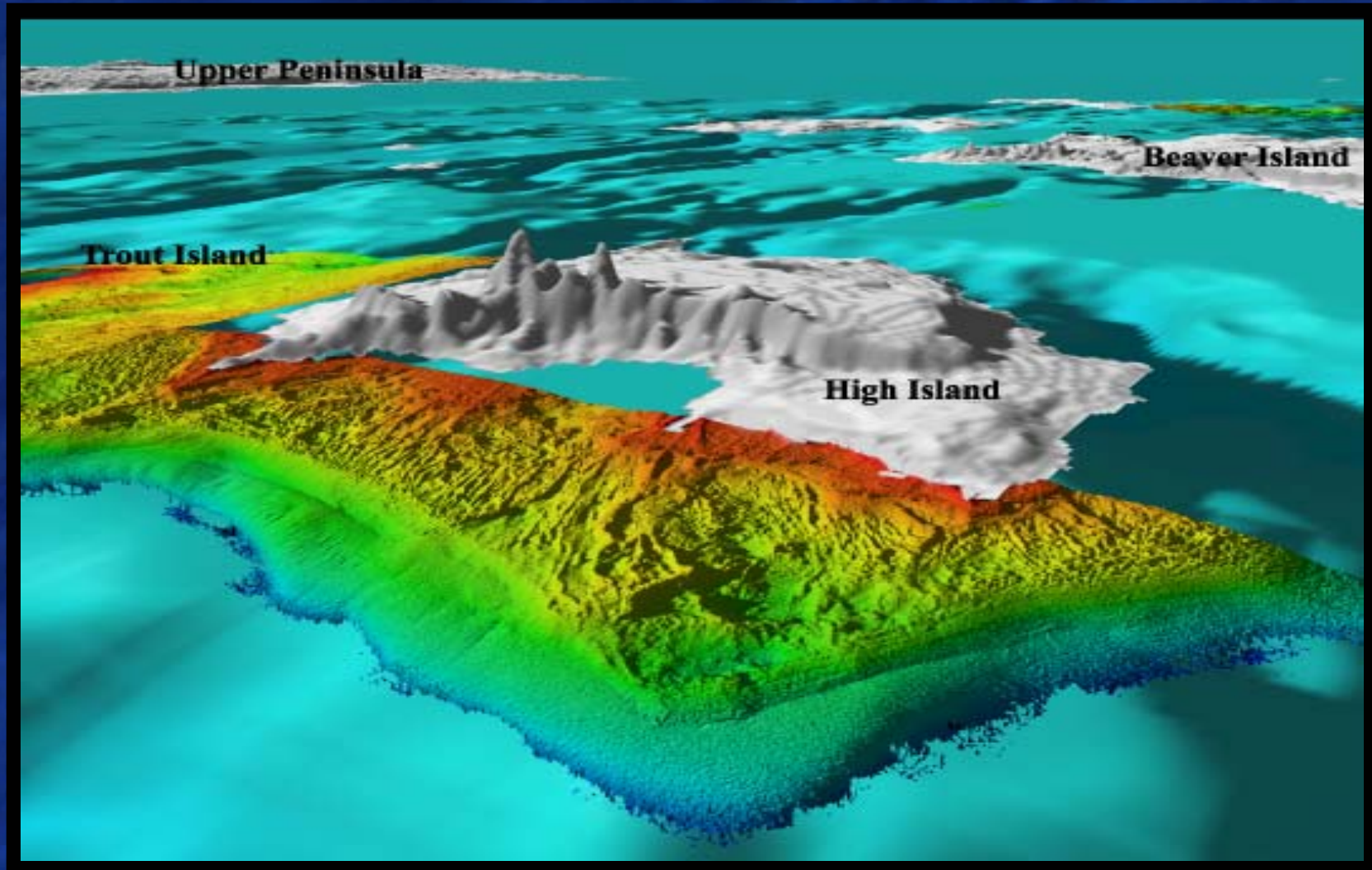
U.S. EPA Region 5
Critical Ecosystems
Team Analysis Lake
Michigan basin
the for land use and
cover

- 
- Highest 10% scores
for ecosystem quality
 - Lowest 10% scores
for sustainability

Wetland Loss



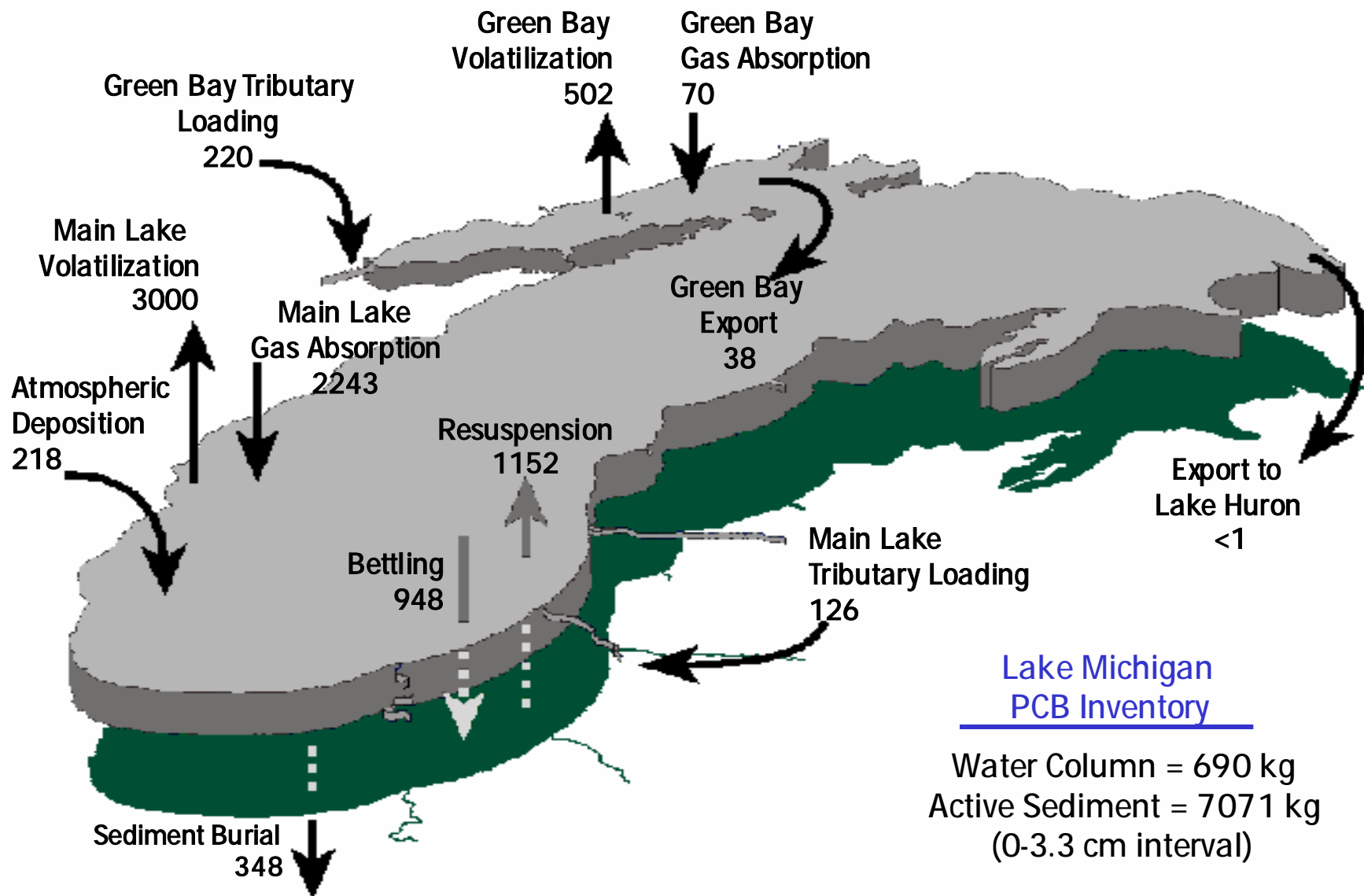
High Island looking Northeast (glacial or Bois Blanc Formation)



Dune and Lake



Lake Michigan Mass Balance



Wolf Population Recovering

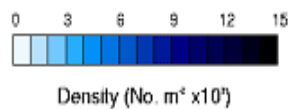
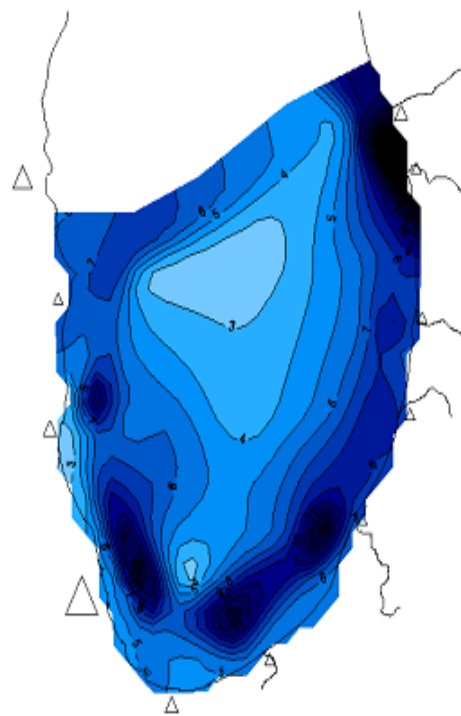


Keystone Species in Lake Michigan Food Web Vanishing

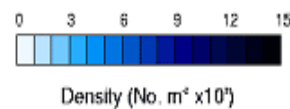
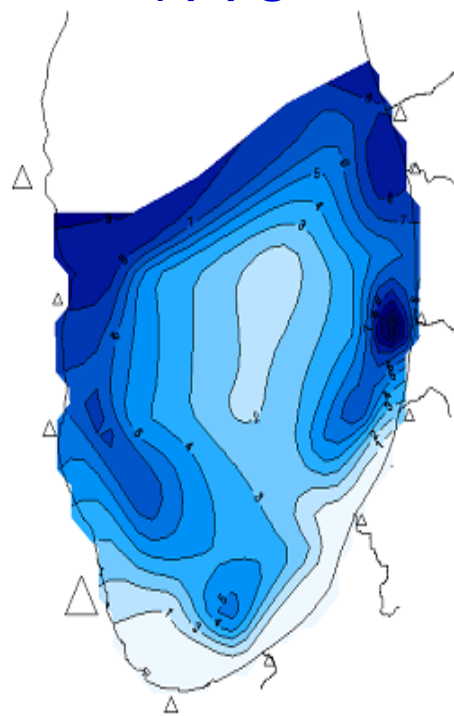


Densities of *Diporeia* in southern Lake Michigan for selected years from 1980 to 2000

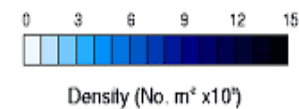
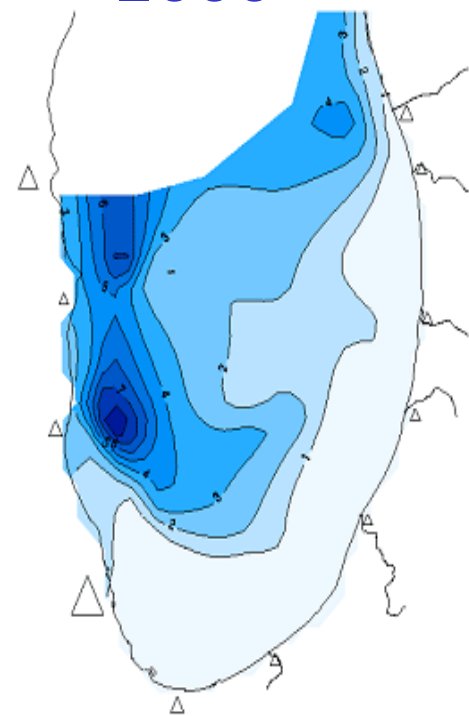
1980



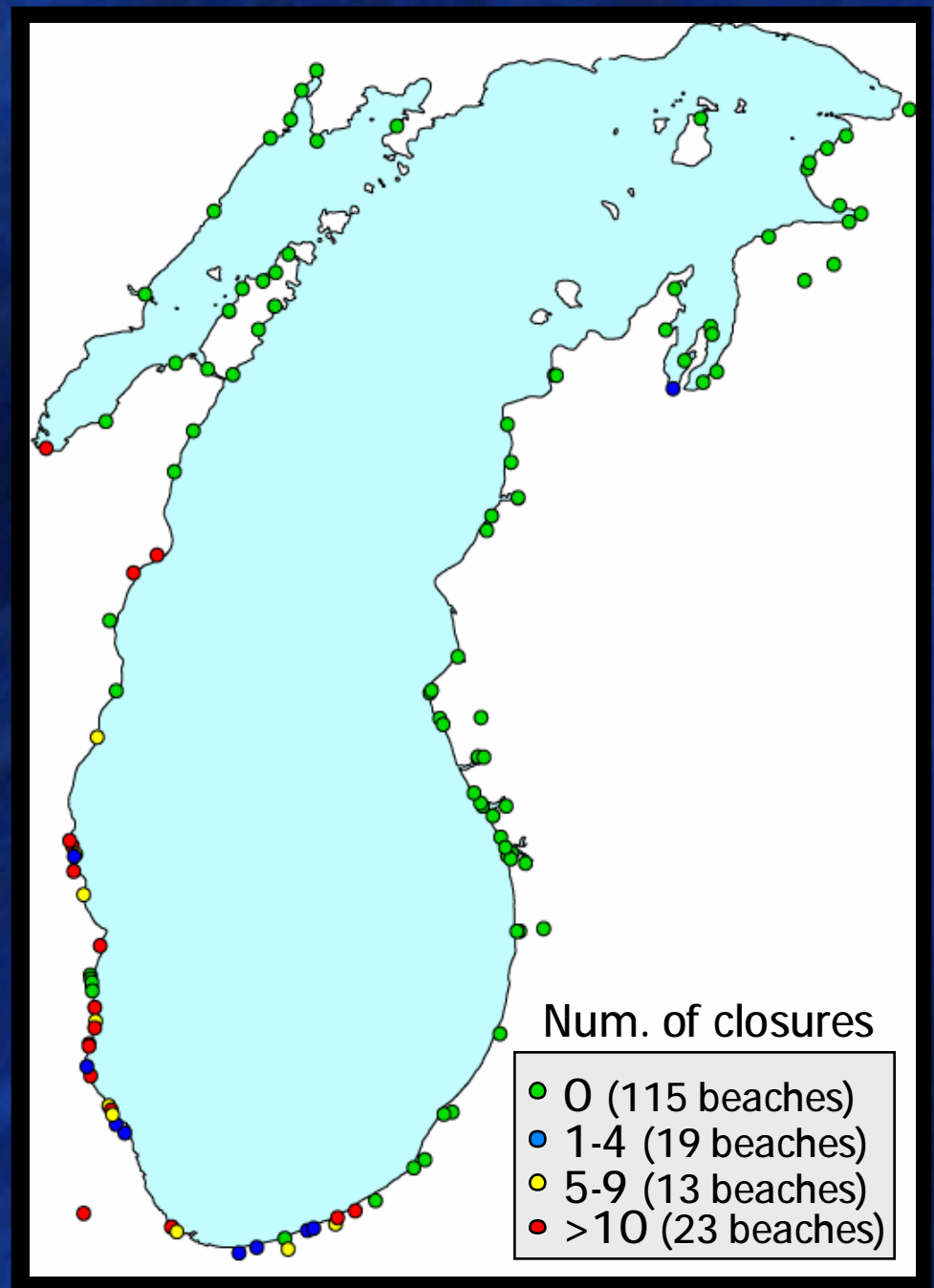
1993



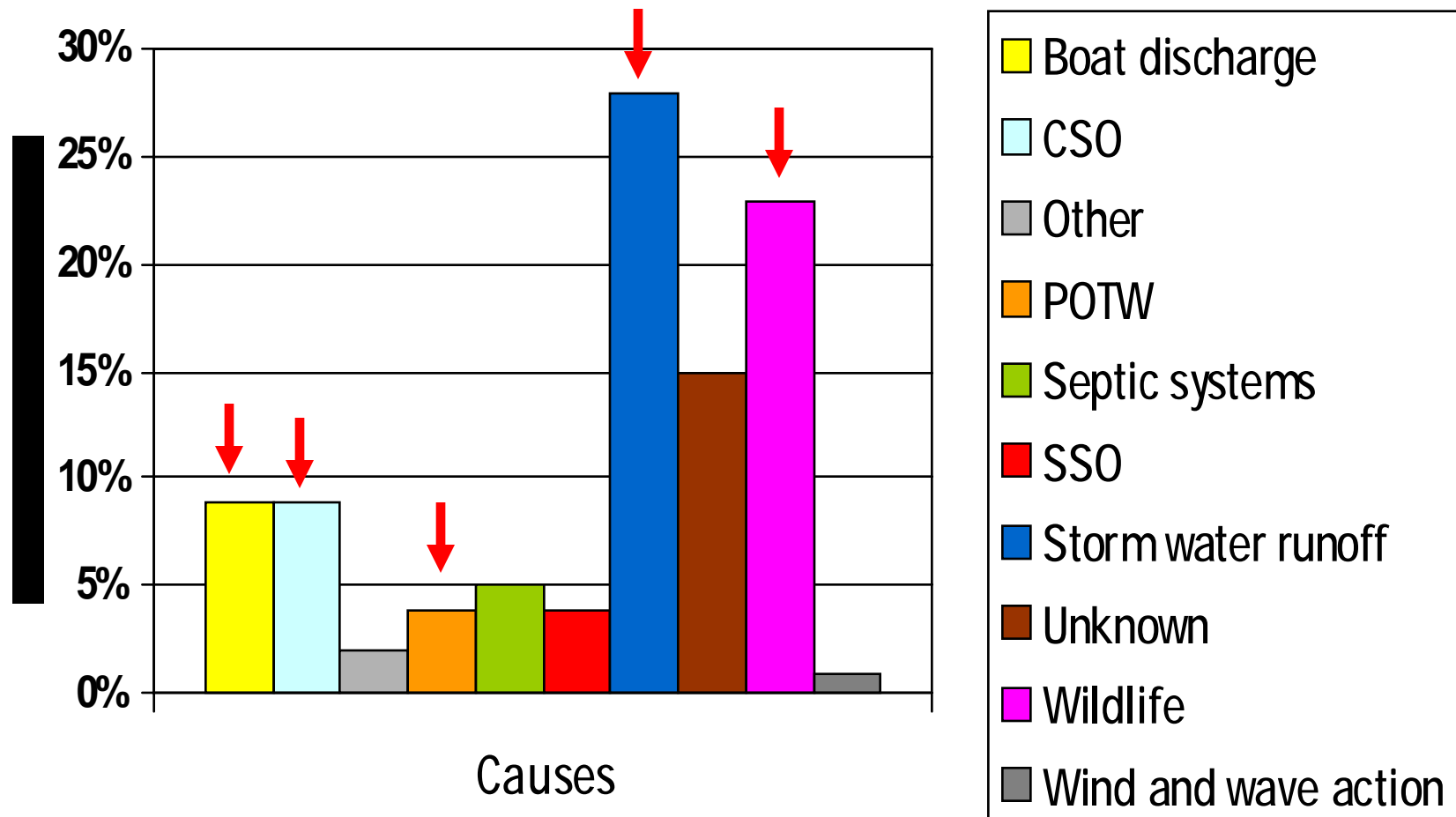
2000



Pathogens Cause Beach Closings



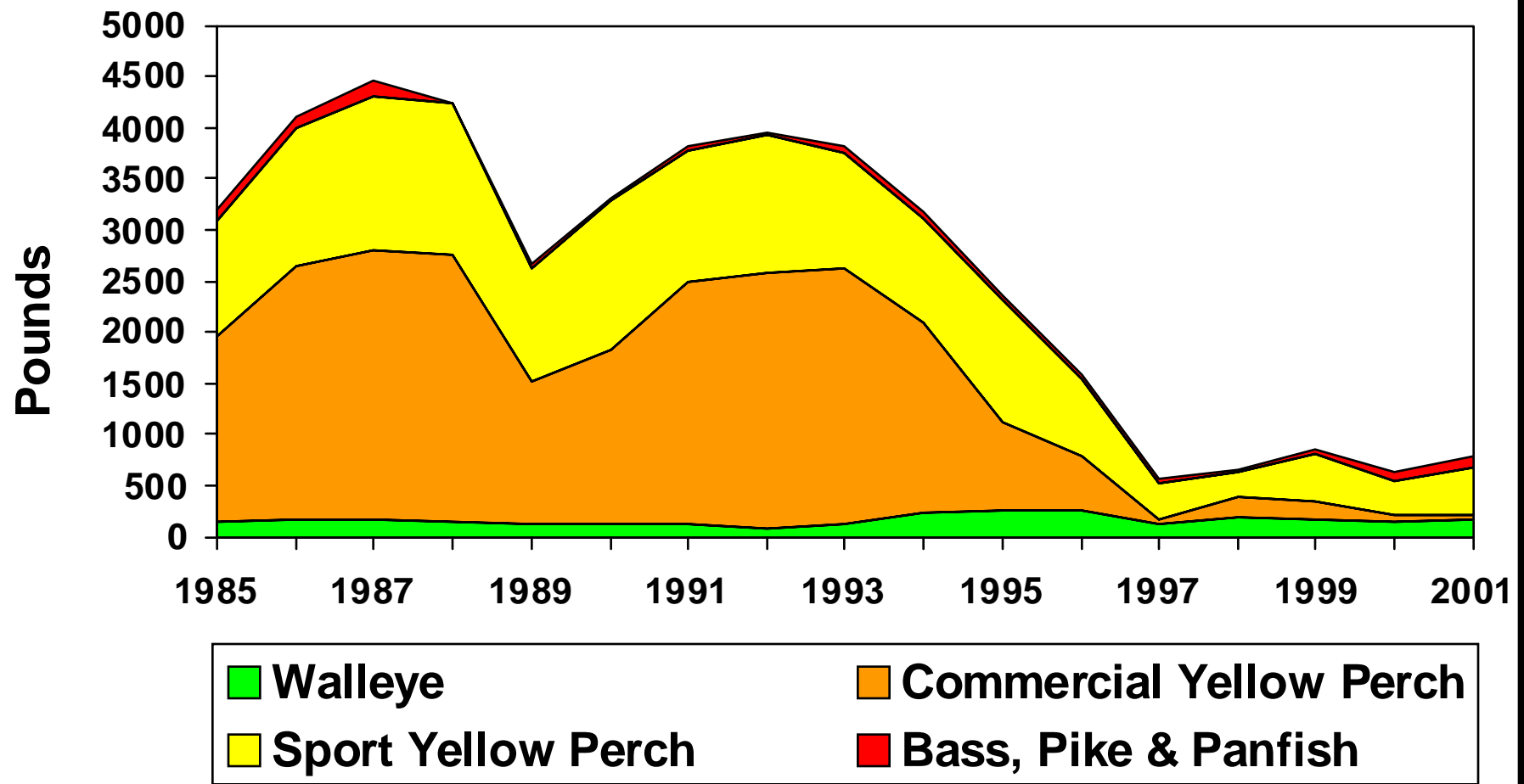
Causes of Closures/Advisories for the 97 Reported Beaches



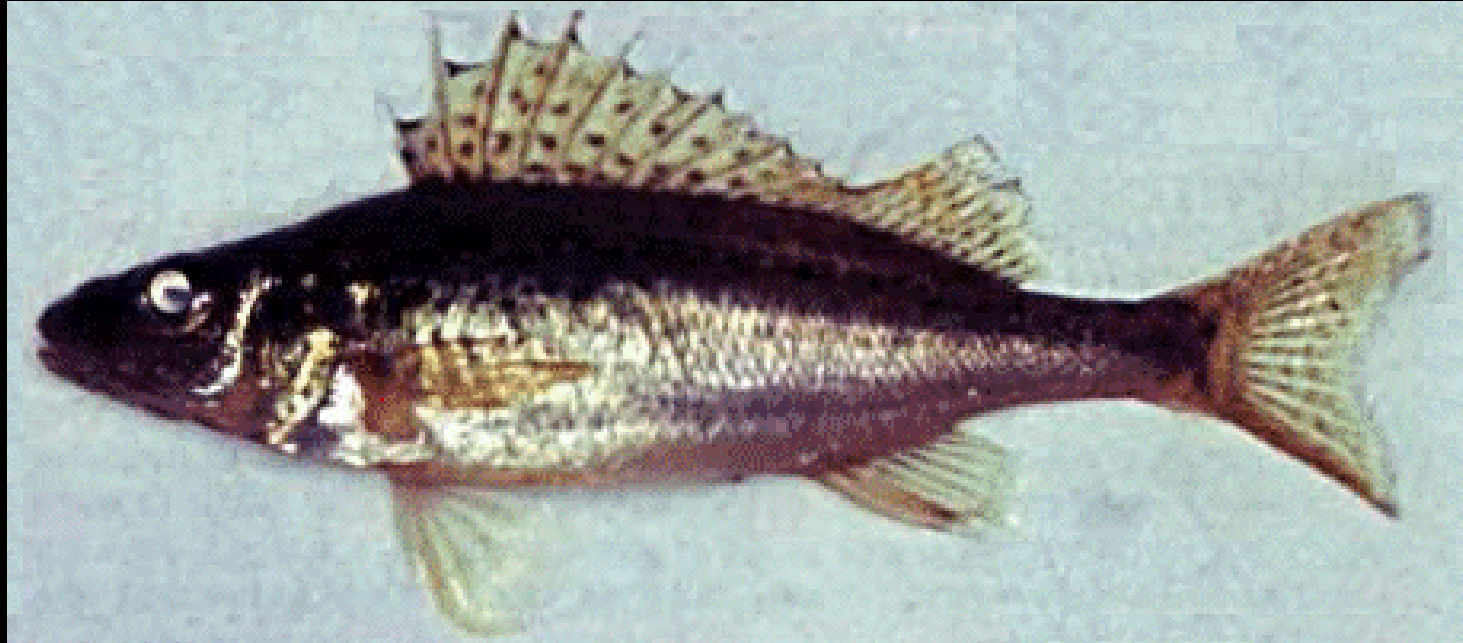
Harvest Trends – Lake Michigan:

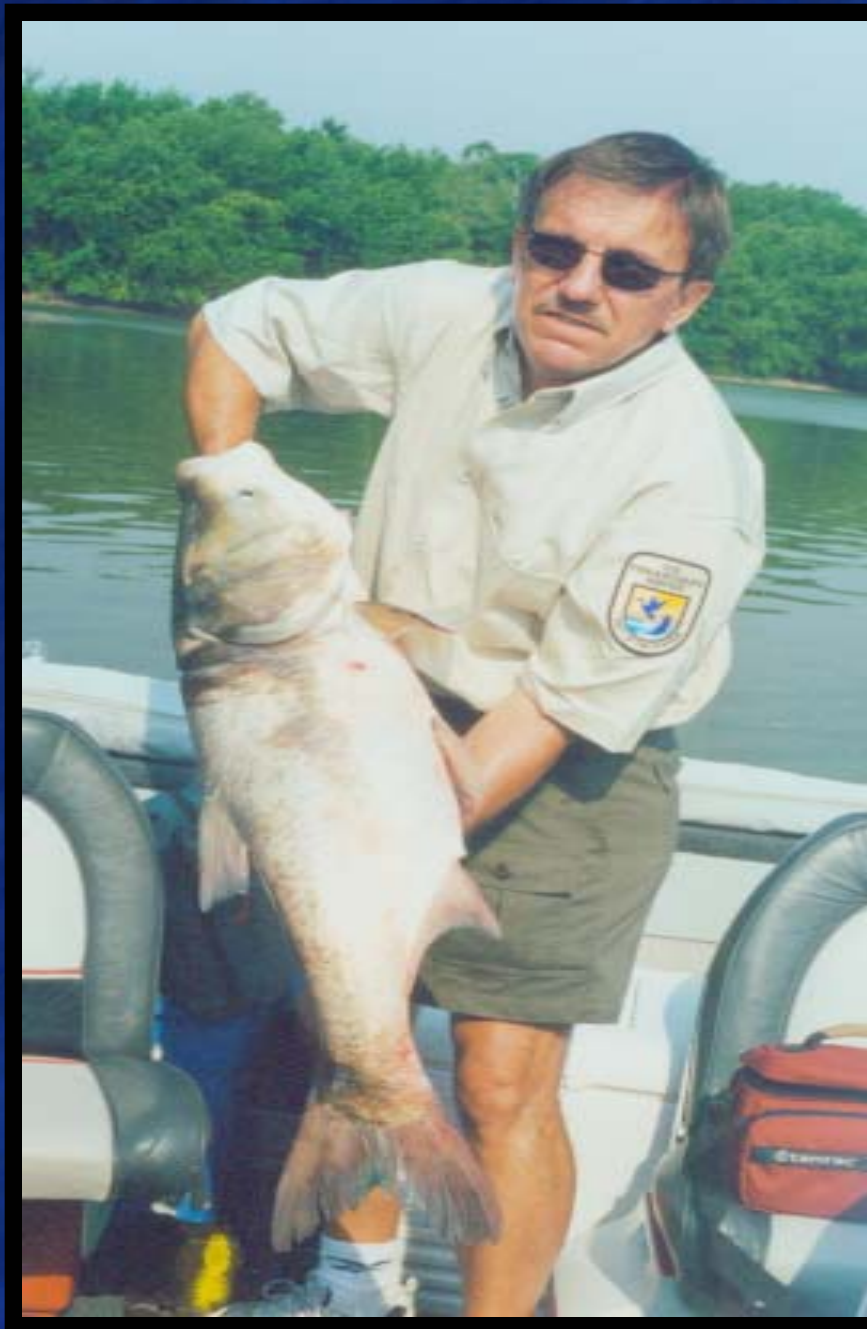
- Steady downward trend – mostly commercial
- Sport harvest exceeded commercial
- L. Michigan FCOs (harvest expectations):
 - ❖ Below FCOs for; whitefish, lake trout, chubs, yellow perch, planktivores, round whitefish, sea lamprey)
 - ❖ Achieving FCOs for; salmonids (non-lake trout)

Harvest of Inshore Fishes Lake Michigan



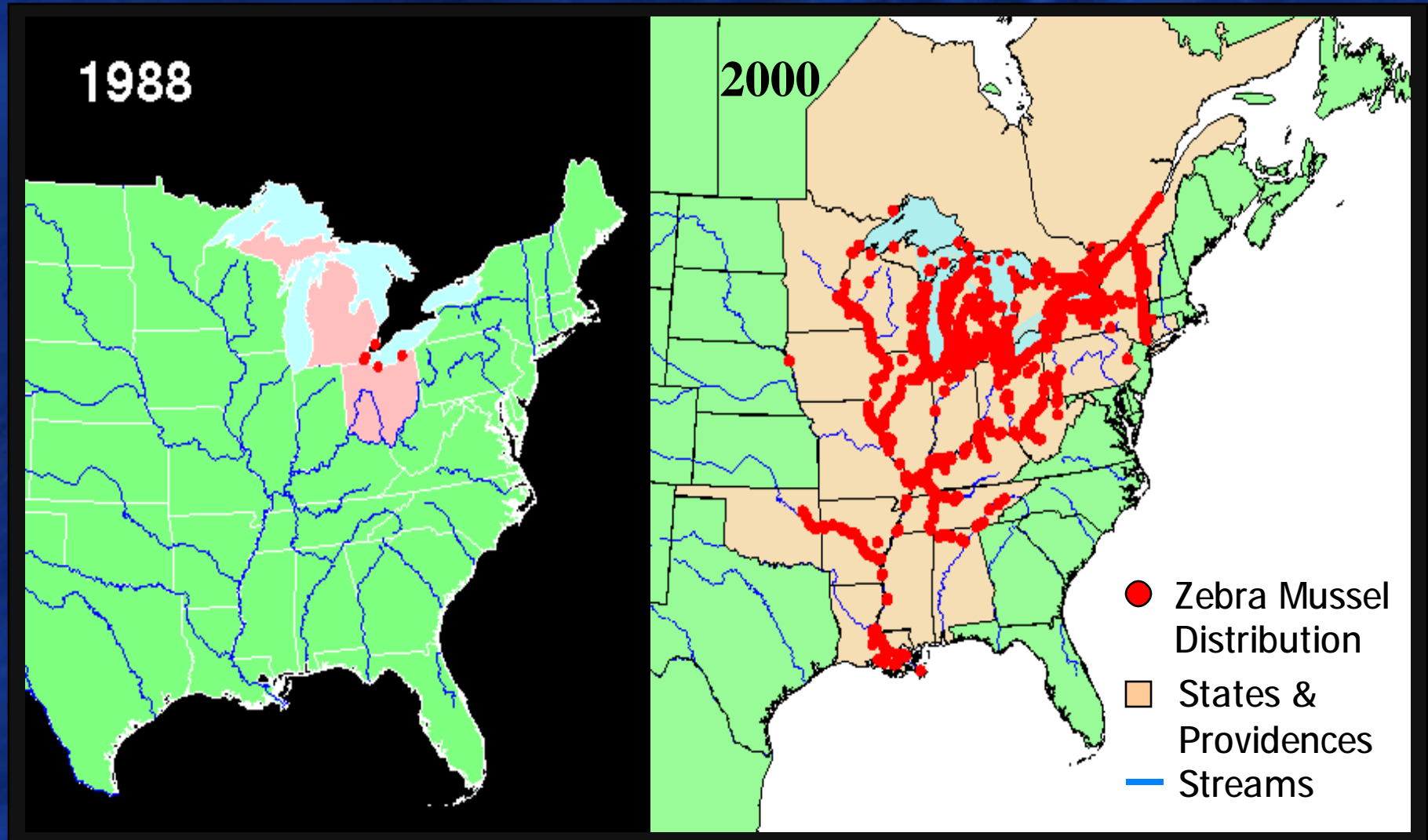
Ruffe Surveillance Program



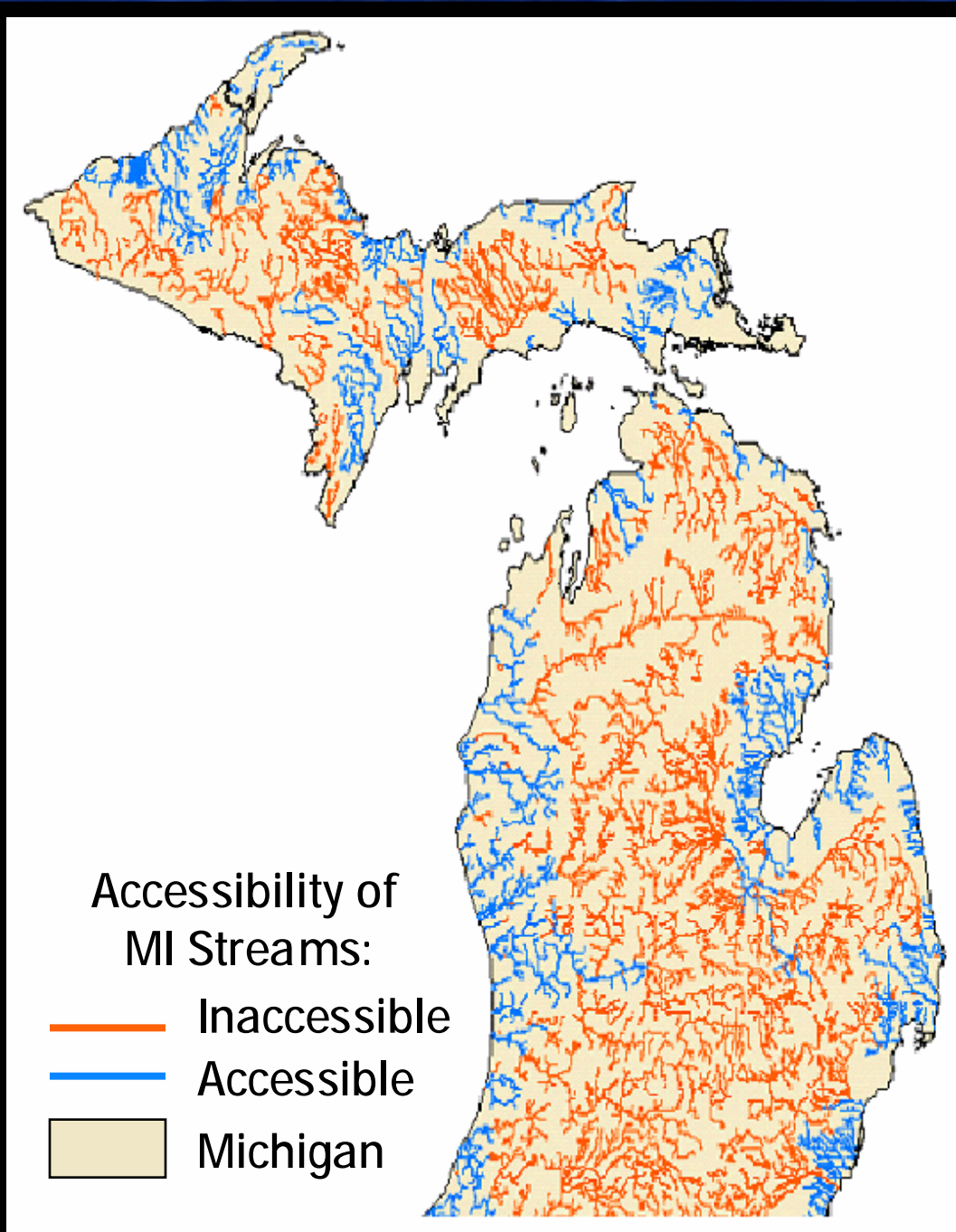


Bighead Carp in
the Illinois River
Summer 2002

Zebra Mussel (1988-2000)

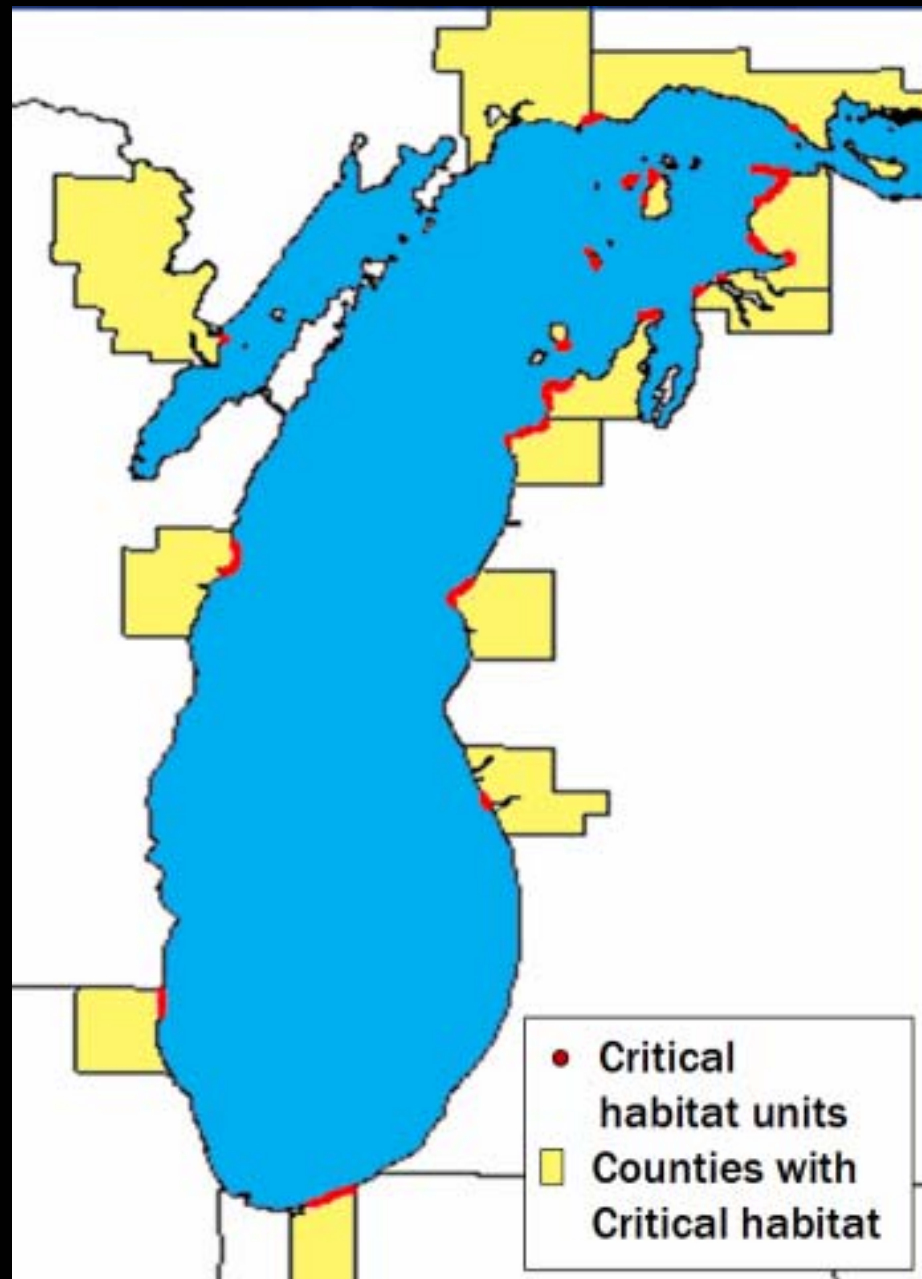


Accessibility of Michigan Tributaries from Great Lakes

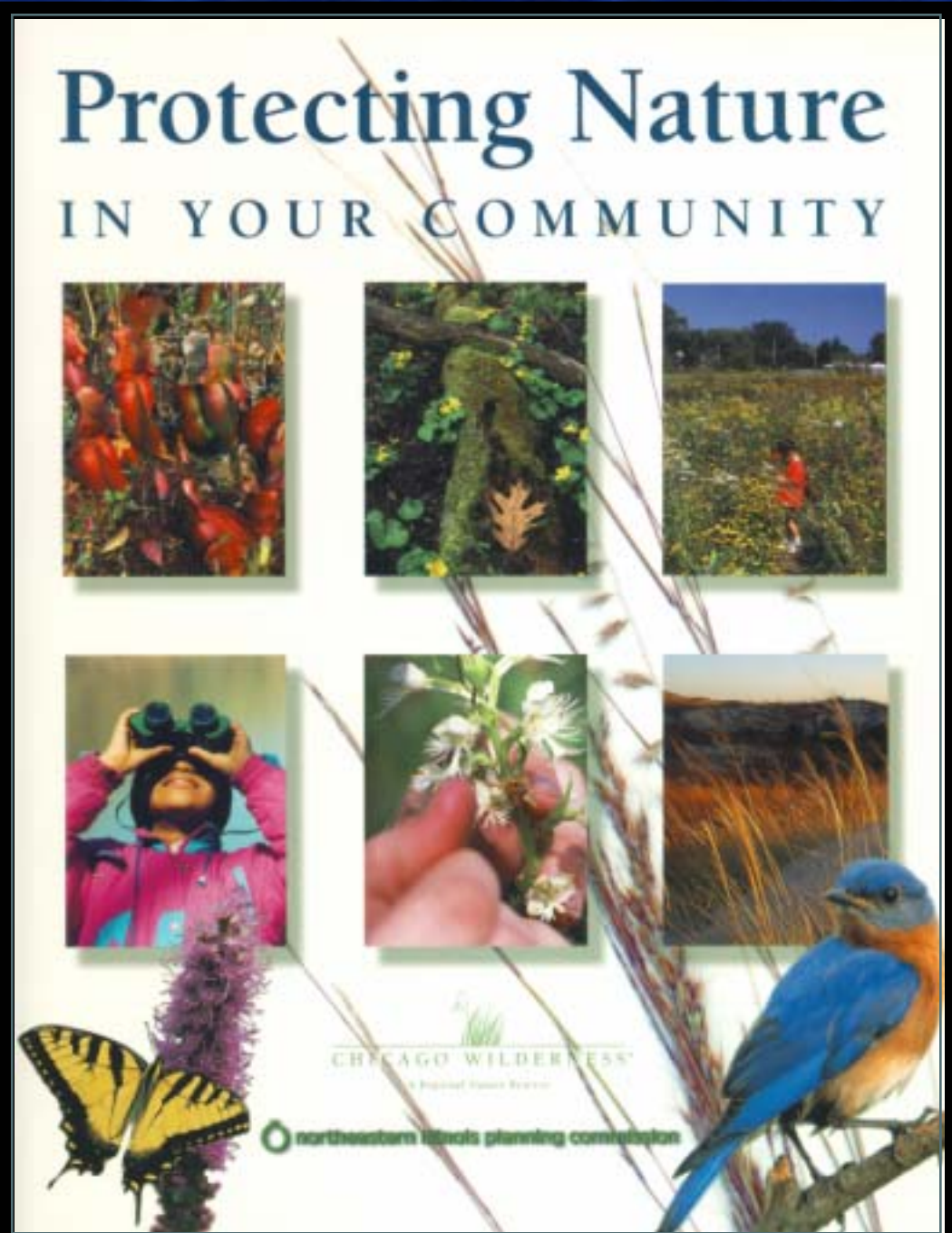


Four rare Species improving

Critical areas like
USFWS Plover
critical habitat
map



Preserving and enhancing biodiversity in Southern Lake Michigan



Contributors

Alan Arbogast, MSU

Burr Fisher, USFWS

Craig Czarnecki, USFWS

David Clapp, MDNR

Judy Beck, US EPA

Mark Mackay, MDNR

Margaret Dochoda, GLFC

Martha Avilés-Quintero, GLNPO

Mary White, US EPA

Tom Gorenflo, CORA

Tom Nalepa, NOAA GLERL