

US EPA ARCHIVE DOCUMENT

EPA Disclaimer

Notice: This document has been provided as part of the U.S. Environmental Protection Agency Sustainable Materials Management Web Academy (formally RCC) Recycling and Solid Waste Management Educational Series. This document does not constitute EPA policy or guidance and should not be interpreted as providing regulatory interpretations. Inclusion within this document of trade names, company names, products, technologies and approaches does not constitute or imply endorsement or recommendation by EPA. Information contained within this document from non-EPA presenters has not been screened or verified. Therefore, EPA has not confirmed the accuracy or legal adequacy of any information provided by the non-EPA presenters and used by EPA on this web site. Finally, links to non-EPA websites are provided for the convenience of the user; reference to these sites does not imply any official EPA endorsement of the opinions, ideas, data or products presented at those locations nor does it guarantee the accuracy of the information provided.



Hannaford Supermarkets Sustainability Team



Agenda

- Hannaford Organizational Overview
- Sustainability at Hannaford
- EPA Food Recovery Hierarchy
- Hannaford's Processes within the Hierarchy



Who Are We?



DELHAIZE  GROUP

Belgium parent company

- Operating food retail outlets in Belgium, Greece, Indonesia, Romania & US



179 stores serving ME, NH, VT, MA, & NY

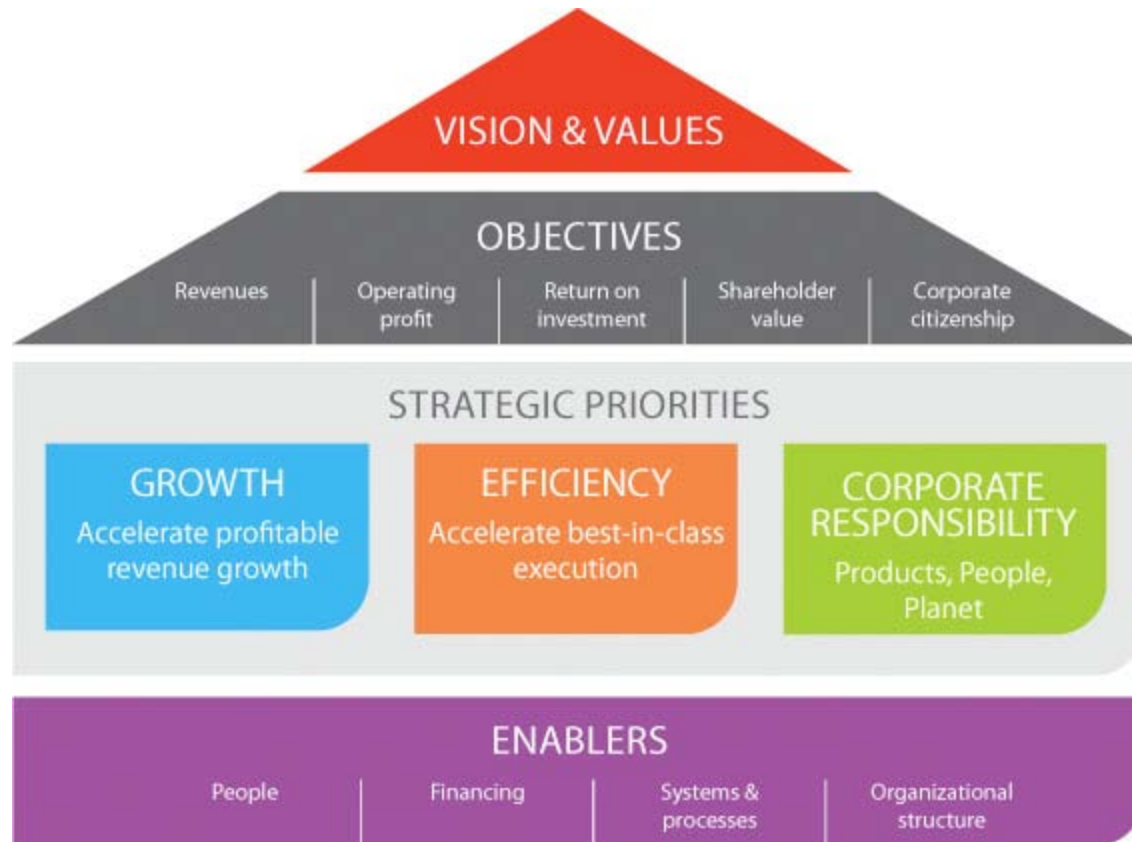
- Full service grocer in 35K sf to 56K sf formats
- Focused on “Fresh” - Produce, Meats, Seafood & Deli
- 27,000 Associates



Our Commitment to Sustainability

“We aspire to enrich the lives of our customers, associates, and the communities we serve in a sustainable way.”

PRODUCTS ~ PEOPLE ~ PLANET





Food Recovery Hierarchy

www.epa.gov/foodrecoverychallenge

Source Reduction

Reduce the volume of surplus food generated

Feed Hungry People

Donate extra food to food banks, soup kitchens and shelters

Feed Animals

Divert food scraps to animal feed

Industrial Uses

Provide waste oils for rendering and fuel conversion and food scraps for digestion to recover energy

Composting

Create a nutrient-rich soil amendment

Landfill/ Incineration

Last resort to disposal

“Hannaford Supermarkets is continuously working to reduce waste and increase recycling while remaining committed to our hunger relief efforts.”

Molly Tarleton, Community Relations



Source Reduction

Reduce the volume of surplus food generated

- 7 Day Fresh Deliveries – Started in 2010
 - Past: forecast out orders, order too little or too much, end up with excess product
 - Consider a fresh truck delivery everyday
 - Led to more accurate ordering, less shrink, and improvement in quality and SALES!
- CAO (Computer Assisted Ordering)
 - Applies to warehouse products and fresh items with a UPC (packaged meats, bagged salads, etc.)
 - Considers sales predictions and inventory level criteria to keep store stocked
 - Orders appropriately
 - Reduction in duplicates and excess



Feed Hungry People

Donate extra food to food banks, soup kitchens, and shelters

- Retail Fresh Rescue
- Reclamation Product
 - 3,376 Tons Donated in 2010

The Good Shepherd Food Bank –Maine

The NH Food Bank – New Hampshire

The Vermont Food Bank—Vermont

Central NY Food Bank—New York

Northeastern Regional Food Bank – New York

Worcester County Food Bank ---Massachusetts

The Greater Boston Food Bank ---Massachusetts

Merrimack Valley Food Bank ---Massachusetts



Feed Animals

Divert food scraps to animal feed

- **Livestock Farm Donation Program**

- Approximately 20 area stores work with local farms
- Hannaford provides detailed guidance to stores
- No cost to Hannaford
- Program diverts reusable food scraps/waste and helps to provide a nutritious feed



Industrial Uses

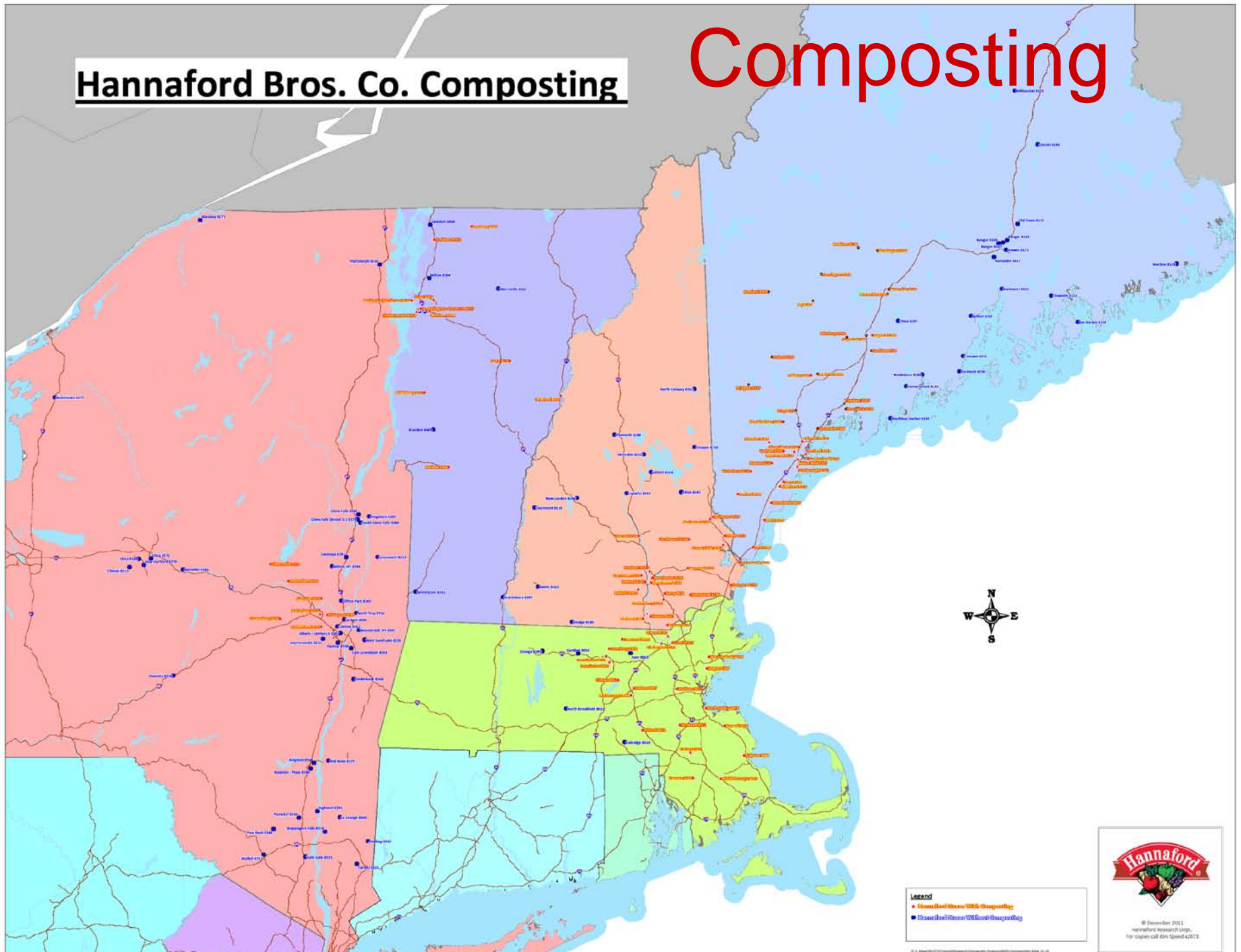
Provide waste oils for rendering and fuel conversion and food scraps for digestion to recover energy

- Rendering - Raw material from food animals recycled into animal feeds
 - Meat, Deli, Seafood
- Grease
 - Removed from deli departments
 - Made into animal feed
 - Production of bio-fuels
- 2,400 tons recycled in 2010



Hannaford Bros. Co. Composting

Composting



© December 2013
Hannaford Bros. Co.
For copies call Kim Speed 42073

Composting

Hanna



Legend
• Household Waste/USDA Composting
• Household Waste/USDA Composting



Composting

Hanna



Legend
• Household House/WRD Ownership
• Household House/WRD Ownership



© December 2013
Hannaford Supermarkets, Inc.
For copies call Kim Speed 42073

Composting

Hanna



Legend
• Household House/WRB Grouping
• Household House/WRB Grouping



© December 2013
Hannaford Supermarkets, Inc.
For copies call Kim Speed 42073

Composting

Hamford Food Waste Composting



Legend
• Hamford House/Wild Grouping
• Hamford House/Wild Grouping



© December 2013
Hamford Research Group
For copies call Kim Speed 42073

Composting

H



Legend
• Composted House/WRB Grouping
• Composted House/WRB Grouping



© December 2013
HannaFord Research Group
For copies call Kim Speed 42073

Composting

Ha



Legend
• Household Waste/USDA Composting
• Household Waste/USDA Composting



© December 2013
Hannaford Research Group
For copies call Kim Speed 42073

Composting

Ha



Legend
• Household Waste/MSW Disposal Site
• Household Hazardous Waste Disposal Site



© December 2013
HannaFord Research Labs
For copies call Kim Speed 42673

Composting

Ha



Legend
• Hannaford Waste/WB Composting
• Hannaford Waste/WB Composting



© December 2013
Hannaford Research Labs
For copies call Kim Speed 42073

Composting



Composting



Composting



Composting



Composting



Composting



Composting



2010 WINS for Hannaford!

- Hannaford recycled 67.29% of total waste in 2010!
- Above industry average!
- Excited to grow that percentage in 2012!
- Supermarket Recycling Program Certification
- Environmental Leader Program Certification



Thank You!

*Kasey Harris, Environmental Program Specialist
Hannaford Supermarkets
kharris@hannaford.com*

