

US EPA ARCHIVE DOCUMENT

EPA Disclaimer

Notice: This document has been provided as part of the U.S. Environmental Protection Agency Sustainable Materials Management Web Academy (formally RCC) Recycling and Solid Waste Management Educational Series. This document does not constitute EPA policy or guidance and should not be interpreted as providing regulatory interpretations. Inclusion within this document of trade names, company names, products, technologies and approaches does not constitute or imply endorsement or recommendation by EPA. Information contained within this document from non-EPA presenters has not been screened or verified. Therefore, EPA has not confirmed the accuracy or legal adequacy of any information provided by the non-EPA presenters and used by EPA on this web site. Finally, links to non-EPA websites are provided for the convenience of the user; reference to these sites does not imply any official EPA endorsement of the opinions, ideas, data or products presented at those locations nor does it guarantee the accuracy of the information provided.

**Food: Too Good
To Waste
Boulder County
Colorado Pilot**



EPA Sustainable Materials Management Webinar

November 15, 2012

Structure of Pilot Program

Young Professionals

- Resource Conservation Staff
- Sustainability Staff

College Community

- Students
- Staff / Administrators
- Alumni



Initial Data

Naropa University

- Presentations
- Materials Distributed
- Weekly email messages

100 Initially Interested – 65 Picked Up Measurement Tools

- Faculty / Administration / Alumni stayed steady
- Student participation diminished



Photo from Naropa University Website

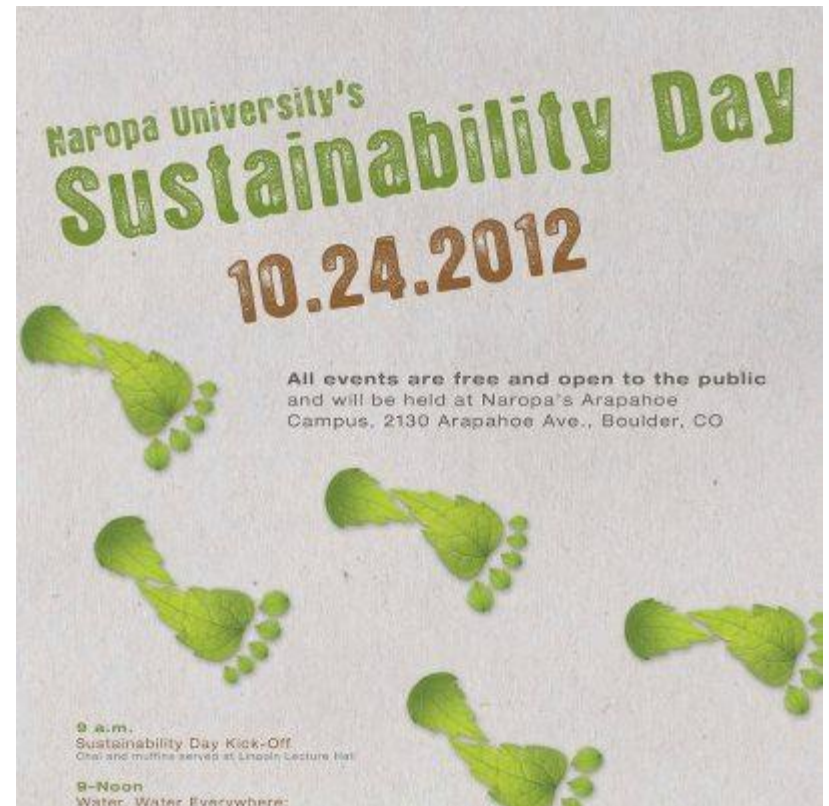
What Worked / Didn't Work

Presentations

- In-person vs. electronic
- Emphasis on embedded energy encourages more robust engagement

Materials

- “Food Waste” defined
- Bags vs. other containers
- PowerPoint somewhat helpful



Graphic from Naropa University

What Might Work

Materials

- “Eat Me First”

Expansion?

- Aging Services
- Wellness Program
- Public Health
- Cooperative Extension and Farmers



Graphic from West Coast Materials Management Forum

Thank You!

Lisa Friend
Sustainability Planner

Boulder County, Colorado
303-441-3522
lfriend@BoulderCounty.org

