

US EPA ARCHIVE DOCUMENT

# Stormwater Pollution Prevention Plans For Construction Sites

Rick Sakow  
U.S. EPA Region IX  
Clean Water Act Compliance Office  
Tel. (415) 972-3495  
[sakow.rick@epa.gov](mailto:sakow.rick@epa.gov)

## Presentation Outline

- This presentation follows the July 2008 NPDES Construction General Permit
- NOI & developing a SWPPP
- SWPPP Essentials
- Site Map Essentials
- Document Retention
- SWPPP Resources

• Prepare a SWPPP before submitting your Notice of Intent (NOI).

• At least one SWPPP must be developed for each construction project covered by this permit and stormwater controls implemented at your site must be documented in the SWPPP.

The screenshot shows the EPA's Electronic Stormwater Notice of Intent (eNOI) Home Page. The page is titled "National Pollutant Discharge Elimination System (NPDES)" and "EPA's Electronic Stormwater Notice of Intent (eNOI) Home Page". It includes a navigation menu with links for Home, About, and Help. The main content area contains information about the eNOI system, including a list of "New Features" and a "You should use the eNOI system because it's:" section. The "New Features" section lists several benefits of the eNOI system, such as allowing users to submit NOIs and LEWVs, modify forms, and view the status of forms. The "You should use the eNOI system because it's:" section lists several advantages, including faster processing times and reduced errors.

**New Features:**

- Allows you to submit NOIs and LEWVs
- Provides additional help text, including a keyword search function for FAQs and glossary terms as well as hyperlinks to definitions and explanatory text
- Allows you to modify the forms submitted electronically
- Provides drop-down menus to reduce errors
- Allows information already in the system to be pre-populated
- Allows you to view the status of forms saved in the system
- Has two views to choose from - the standard view walks you through the process step-by-step on multiple pages while the expert view allows you to enter information on one page with reduced repetition

**You should use the eNOI system because it's:**

- Fastest** - eNOI's online instructions and help menus will guide you through the certification process
- Easiest** - Using eNOI will eliminate 2 weeks or more in processing time. Using eNOI is the fastest way to get your application process started
- More Accurate** - eNOI tips will help you avoid common mistakes that could cause additional delay

•The SWPPP must:

•Briefly describe the nature of the construction activity, including intended sequence and timing of activities that disturb soils.

•Include estimates of the total area expected to be disturbed.

- The SWPPP must:

- Identify all potential sources of pollutants that may reasonably be expected to affect the quality of stormwater discharge from the construction site.
- Include a description of construction and waste materials expected to be stored on-site with updates as appropriate.

- Waste Oil



- Paints



- Solvents



- Sediment



•The SWPPP must:

•Describe control measures to be used on site.

•Straw Mulch



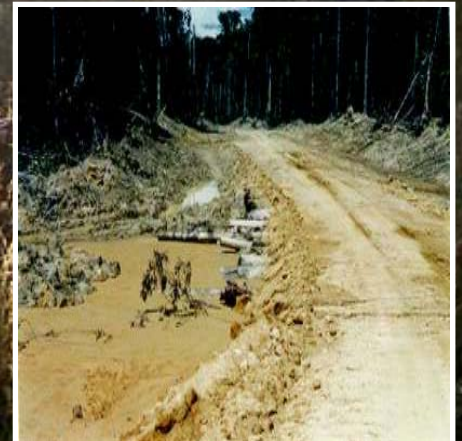
•Hydroseeding



•Sediment Traps



•Sediment Basin



•The SWPPP must:

•Identify all operators for the project site, and the areas of the site which each operator has control.

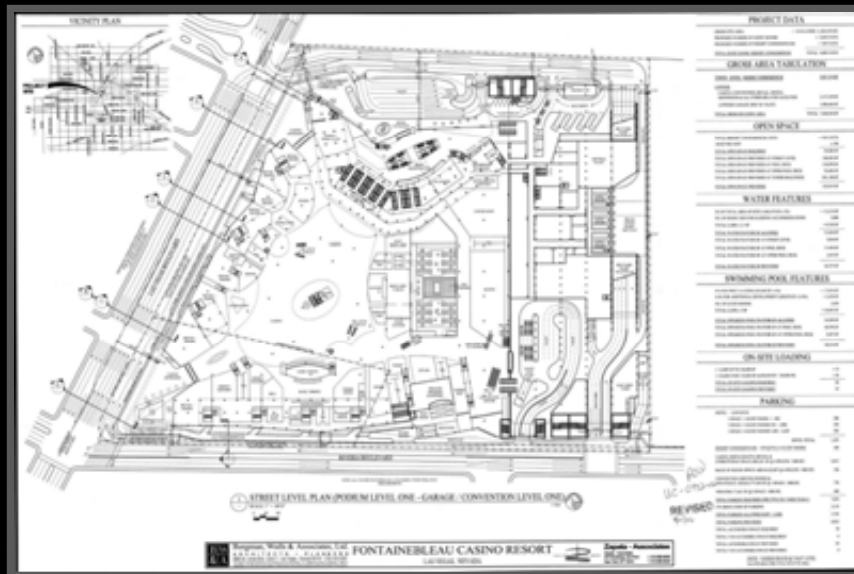




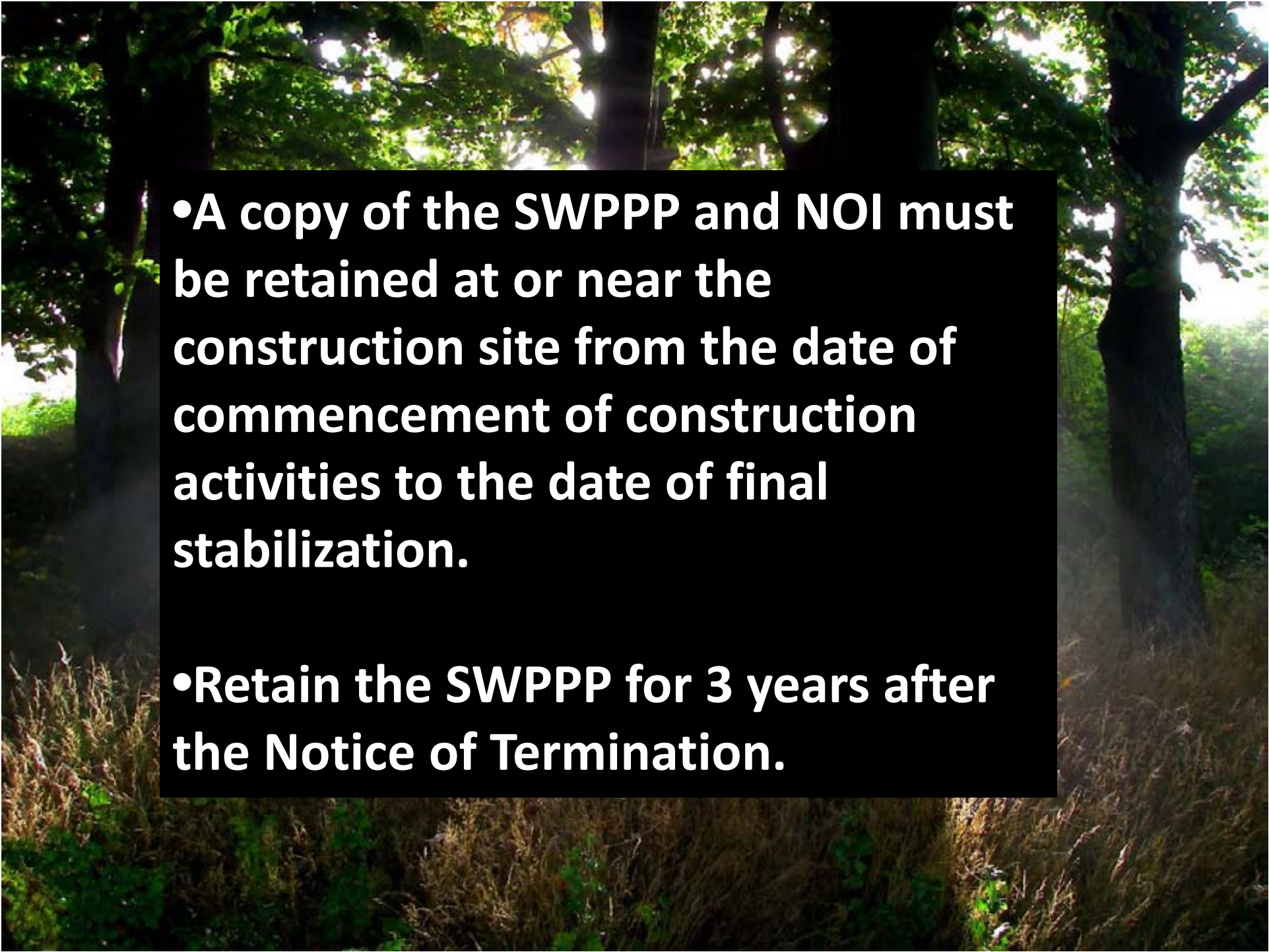
## SWPPP Necessities

- a) Identify construction site operators
- b) Describe nature of construction activity
- c) Site Map - all essential elements of a site map
- d) Description of construction and waste materials
- e) Locations of other industrial stormwater discharges
- f) Dates when grading activities occur
- g) Identification of all non-stormwater discharges
- h) Information related to Endangered Species
- i) Information related to Total Maximum Daily Loads
- j) Copy of the permit
- k) Records of SWPPP Modifications made in response to tribal or federal official
- l) Signature page

## •Site Map Essentials



- Identify: direction(s) of stormwater flow and anticipated slope after grading activities
- Areas of soil disturbance
- Locations of major structural and nonstructural BMPs
- Locations where stabilization practices are expected
- Locations of off-site material, waste, borrow or storage areas
- Locations of all waters of the United States, including Wetlands
- Locations where stormwater discharges to a surface water
- Areas where final stabilization has been accomplished



- A copy of the SWPPP and NOI must be retained at or near the construction site from the date of commencement of construction activities to the date of final stabilization.

- Retain the SWPPP for 3 years after the Notice of Termination.

## •SWPPP Resources

Developing your SWPPP

<http://cfpub.epa.gov/npdes/stormwater/swppp.cfm>

The Construction Industry Compliance Assistance Center - website for construction

<http://www.cicacenter.org/>

•Thank you

