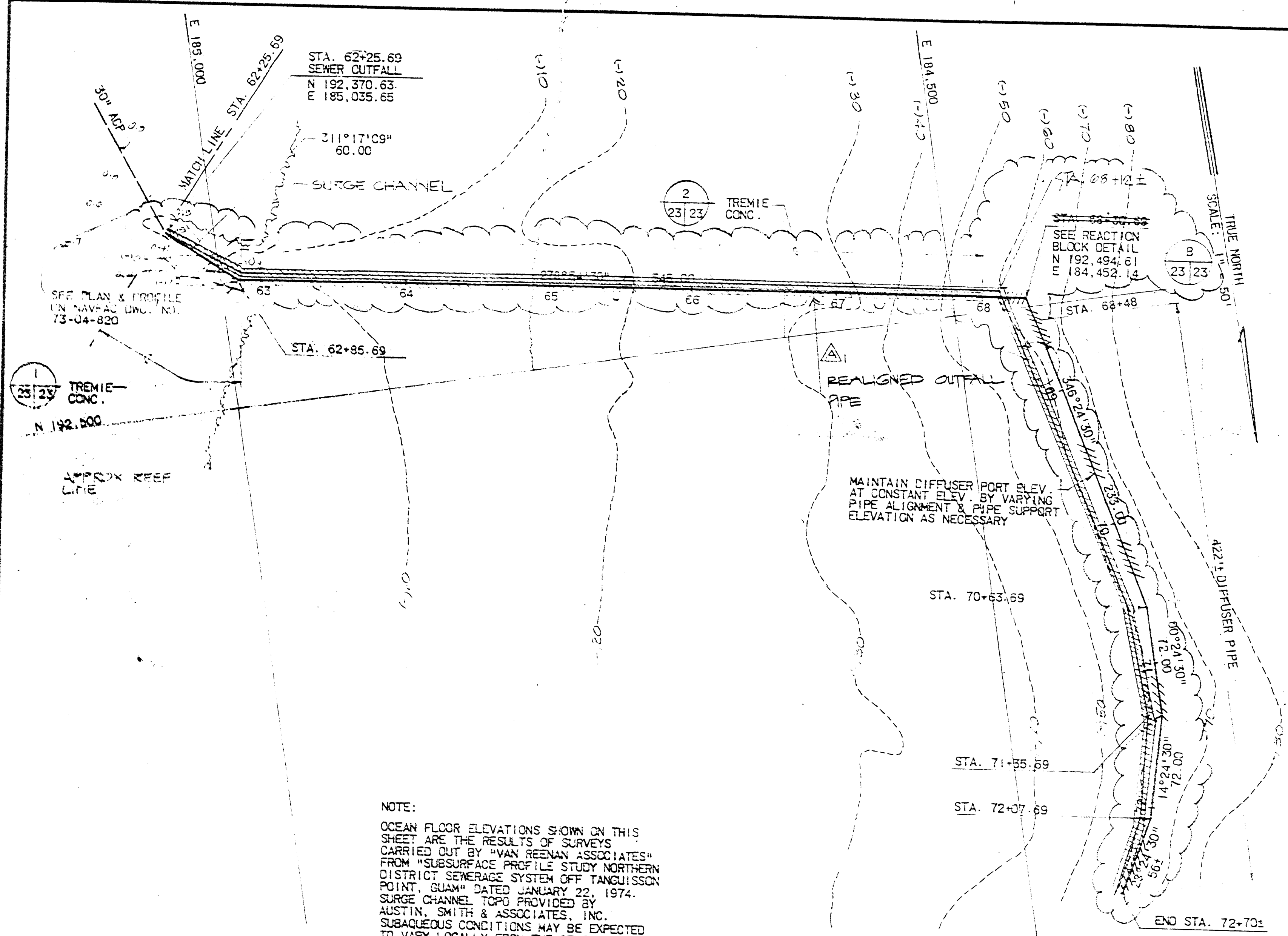
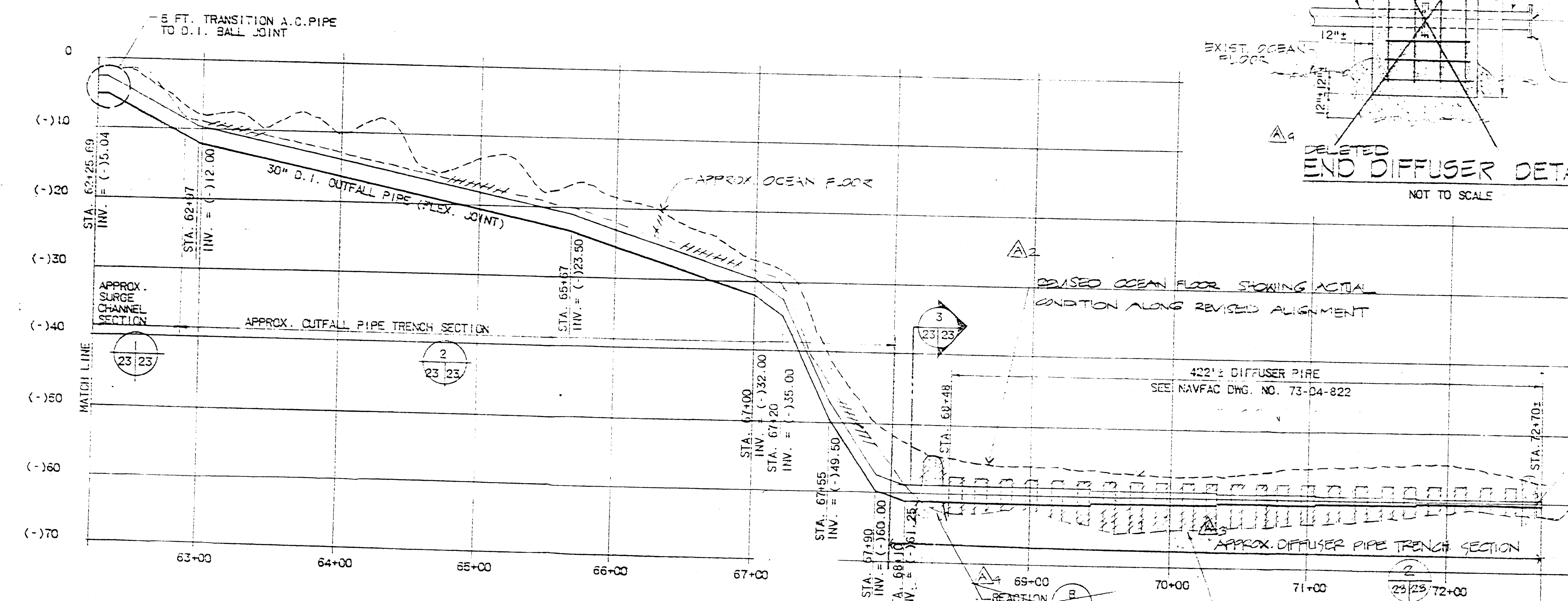


US EPA ARCHIVE DOCUMENT

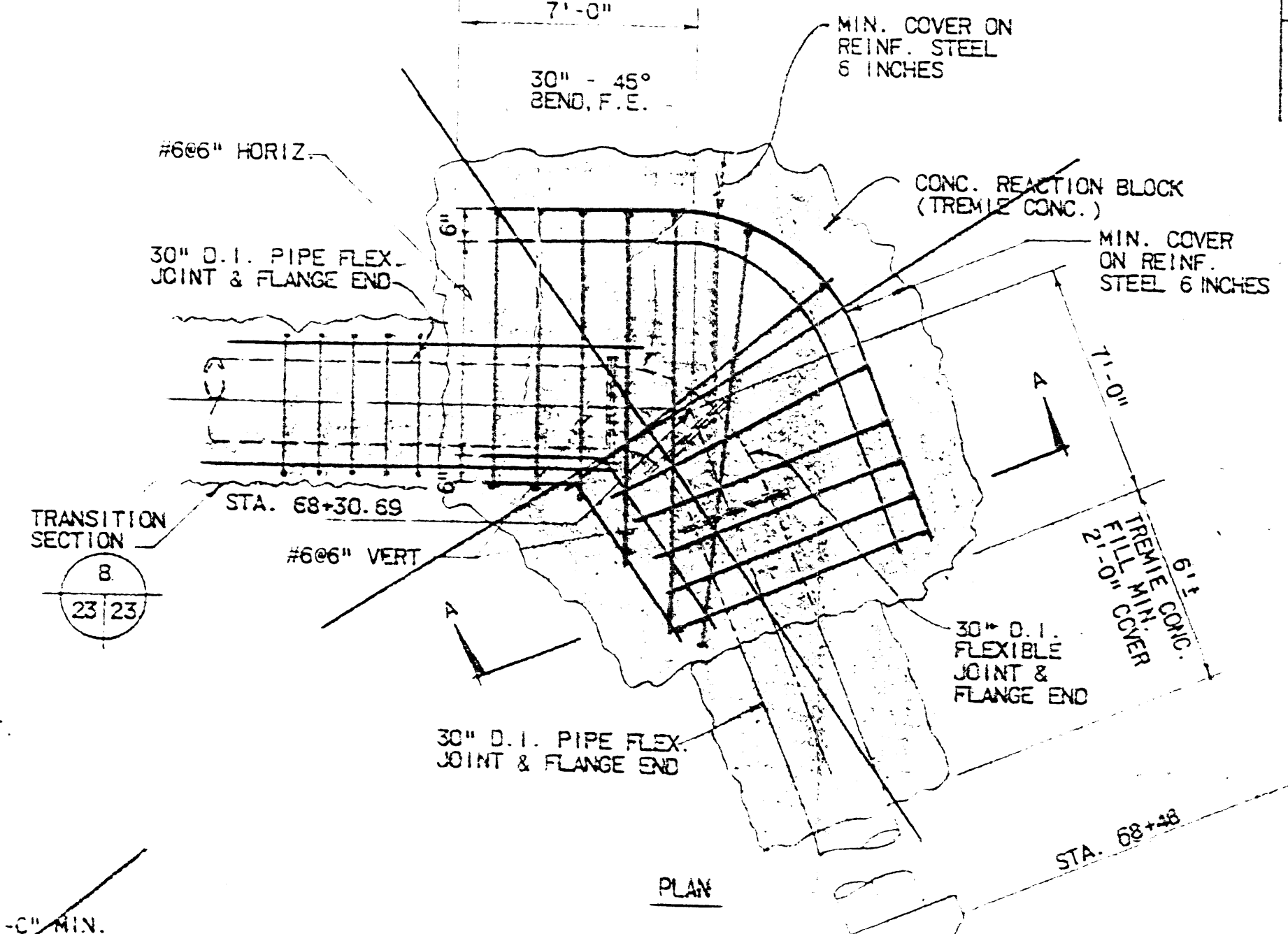


**PLAN - SUB AQUEOUS OUTFALL & DIFFUSER**  
SCALE: 1" = 50'

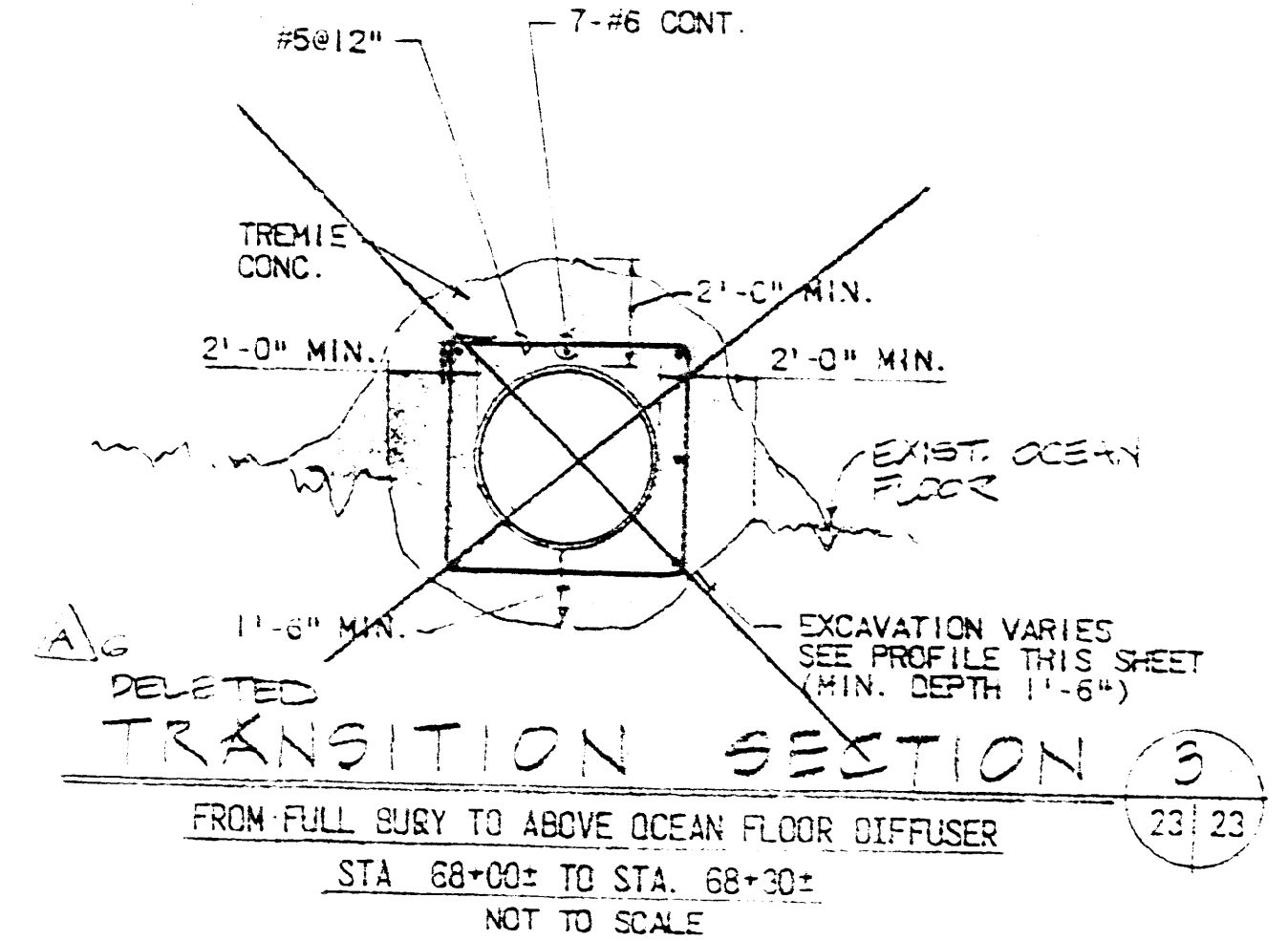


**PROFILE - SUB AQUEOUS OUTFALL & DIFFUSER**  
SCALE: HORIZ. 1" = 50'  
VERT. 1" = 10'

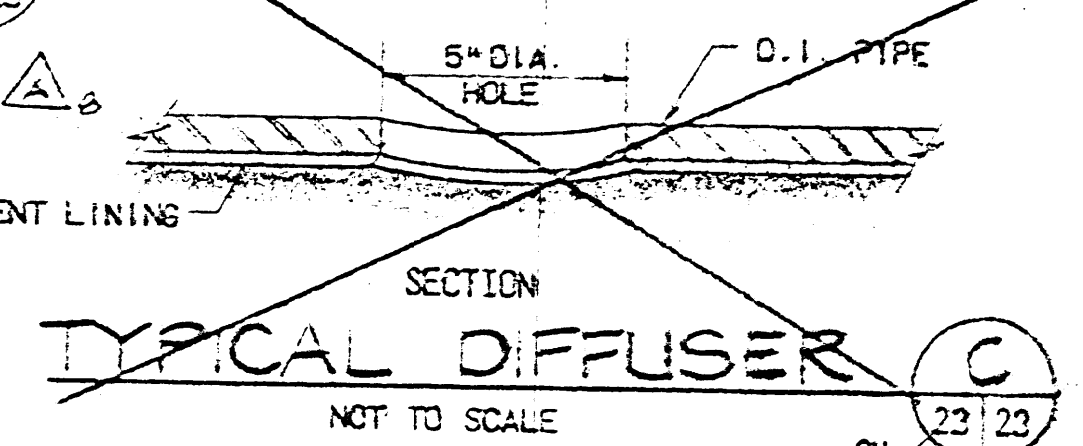
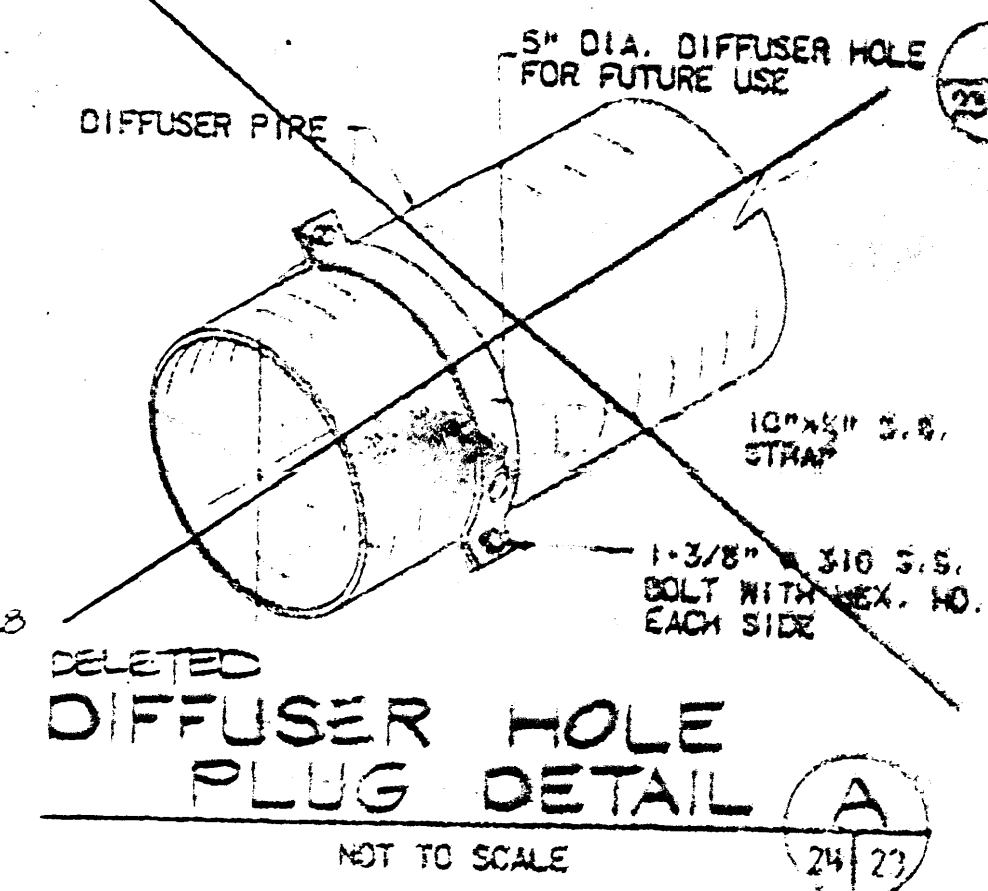
NOTE:  
ALL UNDERWATER REINFORCING STEEL TO HAVE A MIN. OF 6" COVER.



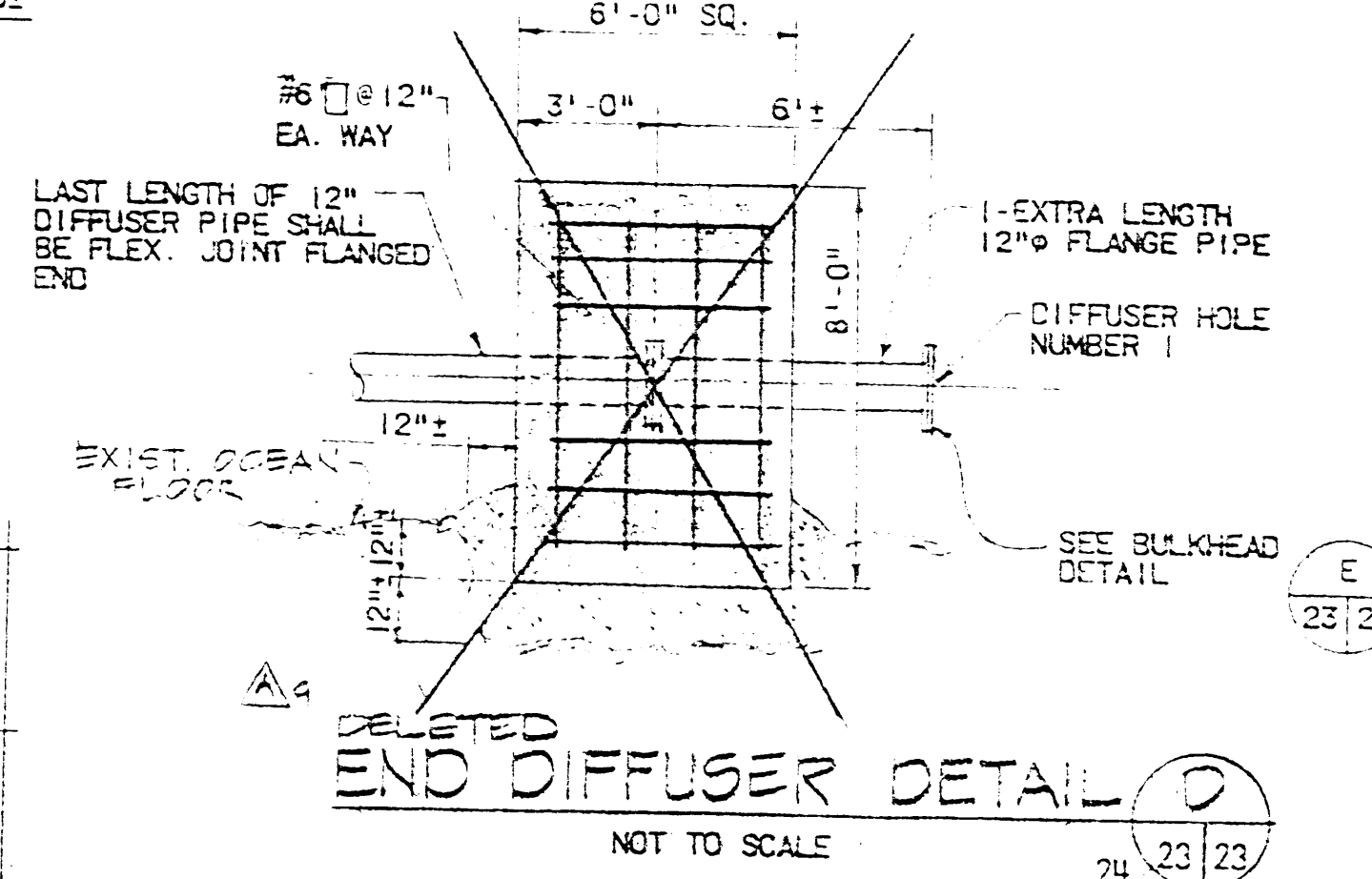
**REACTION BLOCK DETAIL**  
SCALE: 1/4" = 1'-0"



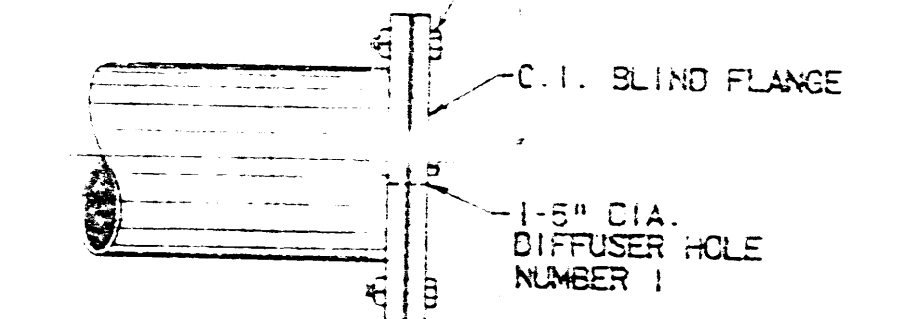
**TRANSITION SECTION**  
STA. 68+00 TO STA. 68+30  
NOT TO SCALE



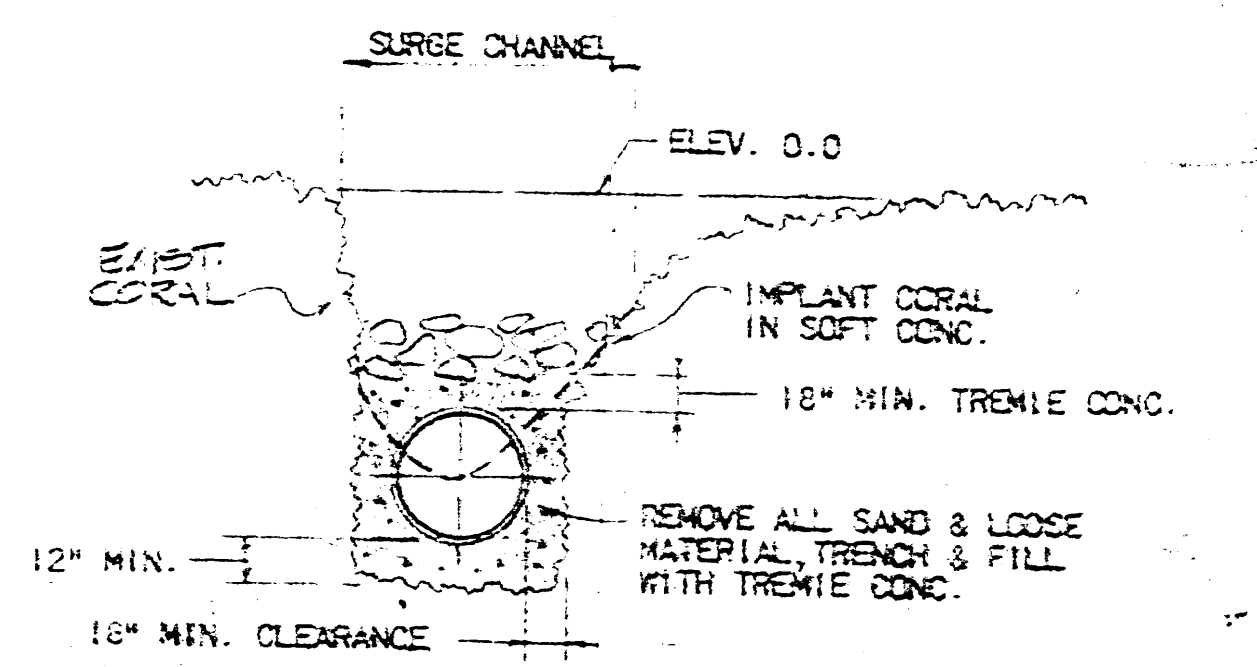
**TYPICAL DIFFUSER**  
NOT TO SCALE



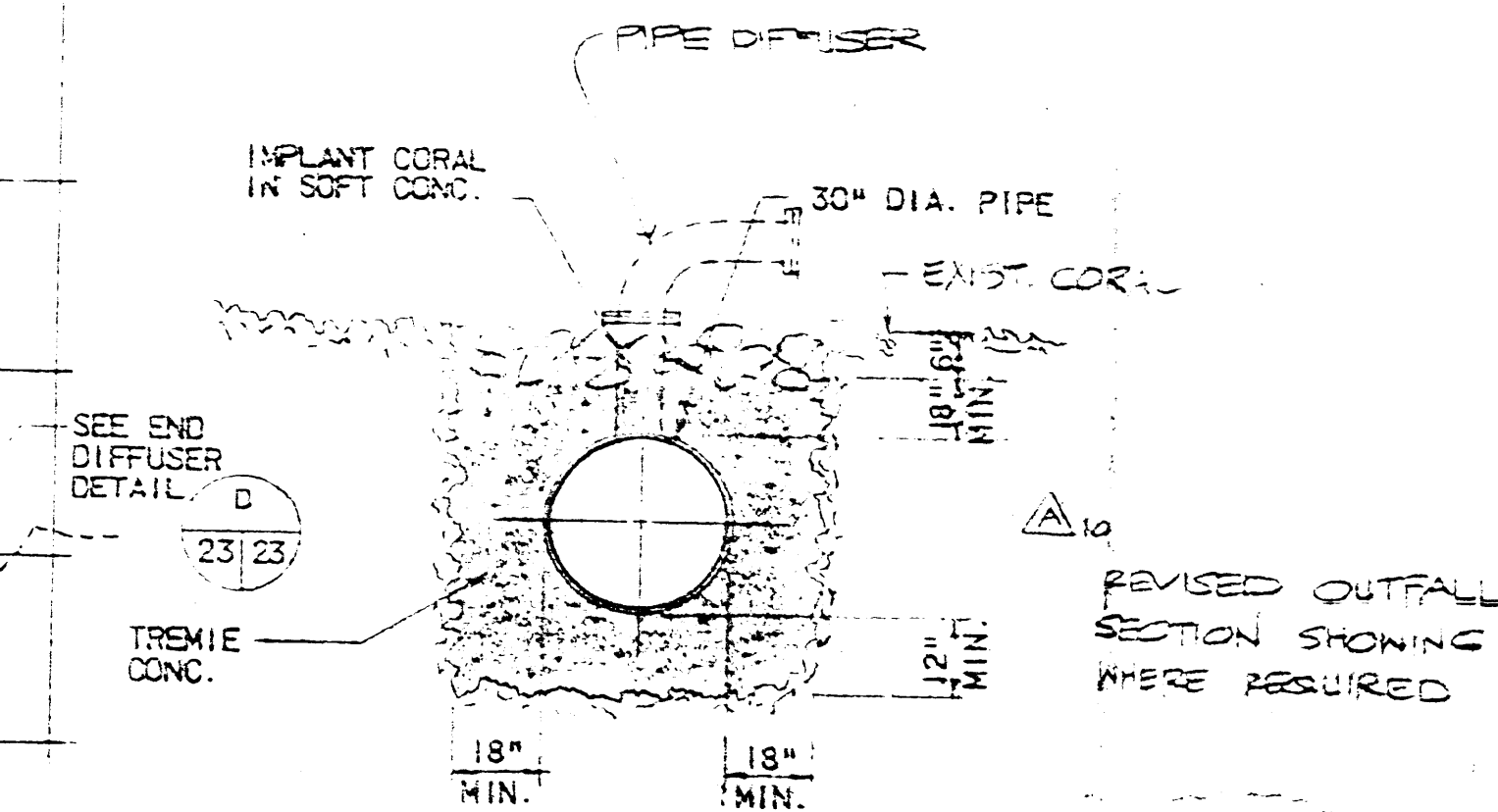
**END DIFFUSER DETAIL**  
NOT TO SCALE



**BULKHEAD DETAIL**  
NOT TO SCALE



**SURGE CHANNEL SECTION  
OUTFALL PIPE**  
STA. 62+25 TO STA. 62+85  
NOT TO SCALE



**OUTFALL PIPE TRENCH SECTION**  
STA. 63+00 TO STA. 72+00  
NOT TO SCALE

GRAPHIC SCALES IN FEET

1" = 10' 0" 10' 20' 30' 40'

1" = 50' 0' 50' 100' 150' 200'

1/4" = 11'-0" 0' 5' 10' 15'

ASA AUSTIN SMITH & ASSOC., INC. ENGINEERS & ARCHITECTS		DEPARTMENT OF THE NAVY NAVAL FACILITIES ENGINEERING COMMAND OFFICER IN CHARGE OF CONSTRUCTION	
DRAWN BY: [Signature]		NAVAL FACILITIES ENGINEERING COMMAND CONTRACTS, MARINA GUAM, H. I.	
CHECKED BY: [Signature]		NORTHERN DISTRICT SEWERAGE SYSTEM NORTHERN LINK AND TREATMENT PLANT GUAM, MARINA ISLANDS	
DATE: 7/15/75		OUTFALL SEWER AND DIFFUSER DETAILS	
APPROVED BY: [Signature]	DATE: 7/15/75	SIZE: F	CODE IDENT NO: 800S1
OFFICER IN CHARGE: [Signature]	DATE: 7/15/75	SCALE: AS SHOWN	NAVAFAC DRAWING NO: 73-04-571
CONTRACT NO. 73-04-571		CONTRACTOR: [Signature]	