

US EPA ARCHIVE DOCUMENT



EPA NPDES Multi-Sector
General Permit for Industrial
Activity

Rick Sakow
EPA Region 9
415-972-3495
sakow.rick@epa.gov



EPA NPDES Multi-Sector
General Permit for Industrial
Activity

Rick Sakow
EPA Region 9
415-972-3495
sakow.rick@epa.gov

29 Regulated Industrial Sectors



- ▶ Mining and oil and gas
- ▶ Steam electric power plants
- ▶ Manufacturing facilities
- ▶ Hazardous waste treatment, storage or disposal facilities
- ▶ Landfills
- ▶ Auto dismantlers
- ▶ Recycling facilities
- ▶ Transportation facilities
- ▶ Sewage treatment plants

Industrial Permit Basic Requirements

- ▶ Submit a Notice of Intent requesting permit coverage
- ▶ Develop and implement a stormwater pollution prevention plan (SWPPP) prior to submittal of a NOI
- ▶ Benchmarks & Monitoring requirements



Industrial Permit Monitoring Requirements



- ▶ Routine facility inspections and visual monitoring of runoff (**Quarterly**)
- ▶ Comprehensive site compliance evaluation (**Annually**)
- ▶ Collect storm water runoff for analysis (**Quarterly** for certain sectors)
 - ▶ If benchmarks are exceeded, evaluate and modify BMP's.

Industrial Permit SWPPP Requirements

- ▶ Identify potential sources of pollutants
- ▶ Describe BMP's
- ▶ Site description
- ▶ Identify receiving waters
- ▶ Identify and document spills and leaks
- ▶ Stormwater controls
- ▶ Sampling data
- ▶ Copy of permit requirements

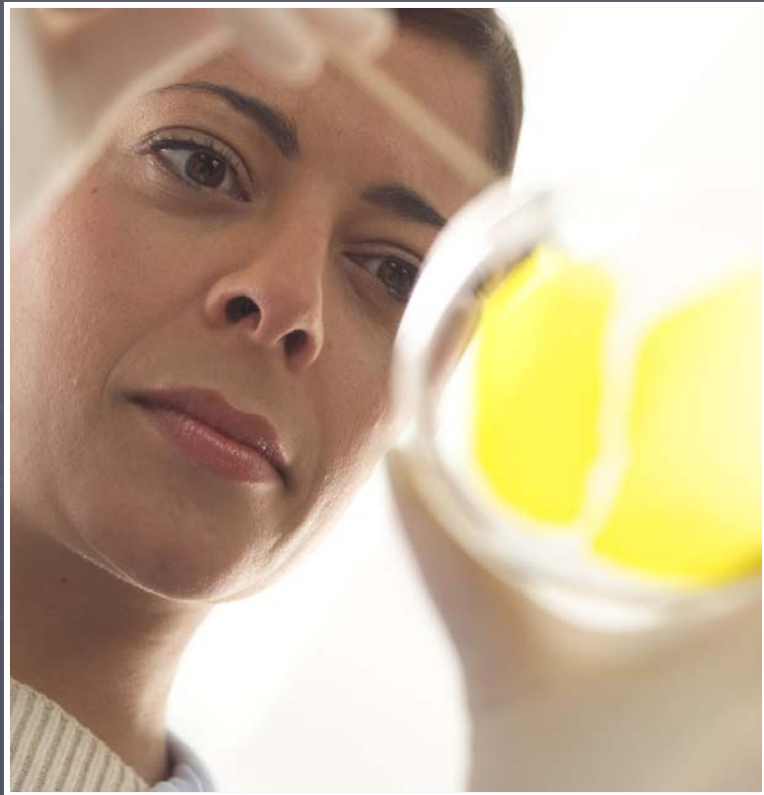


Expiration of the Industrial Permit

- ▶ The EPA Industrial Permit (MSGP-2000) expired in 2005. A new permit will be issued soon.
- ▶ Facilities already covered under the 2000 Industrial Permit must apply for the new Permit once it is issued.



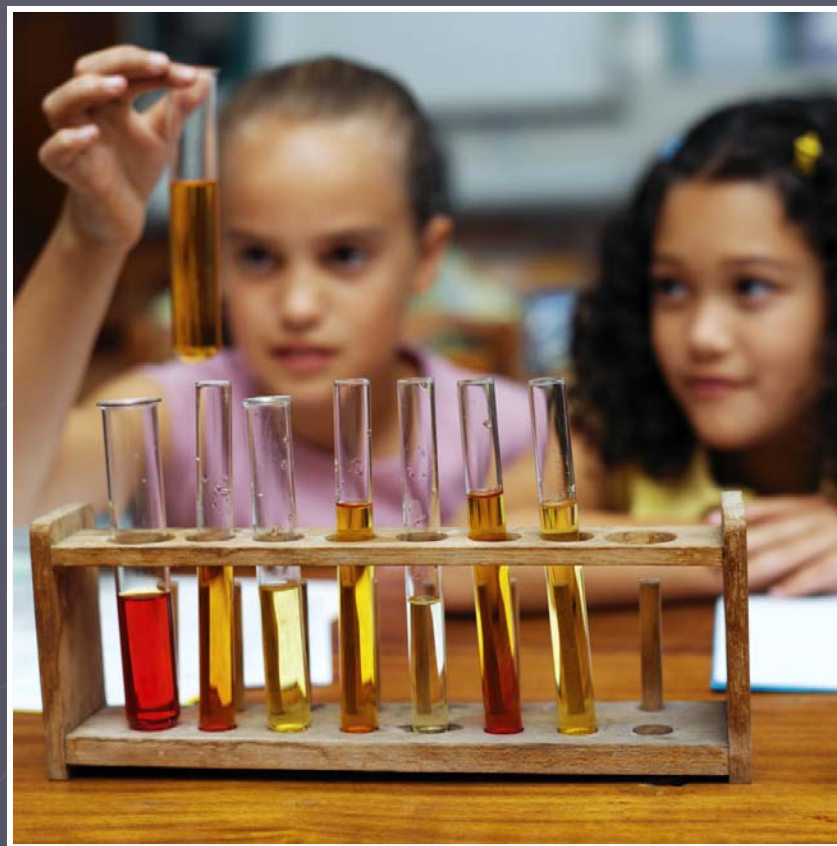
New Industrial Permit Monitoring Requirements



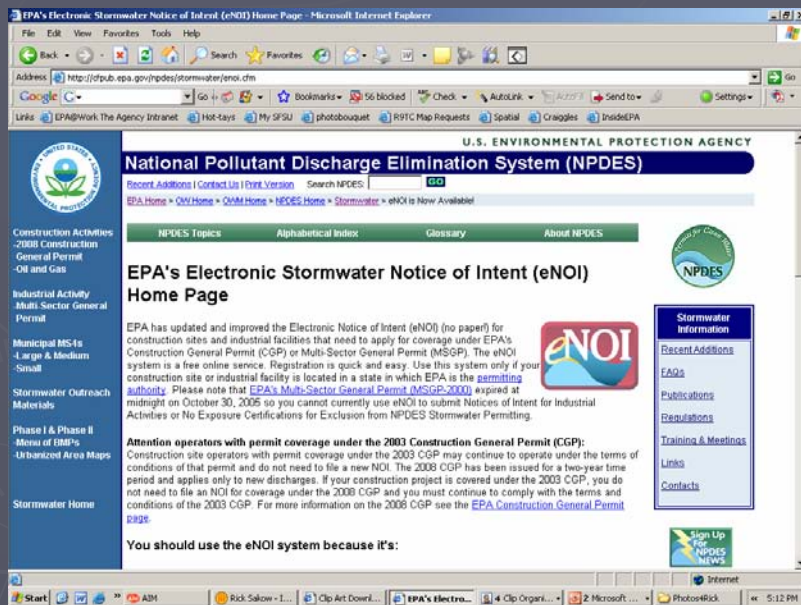
- ▶ The new permit requires that all sectors monitor for Total Suspended Solids (TSS) for year one.
- ▶ If the runoff exceeds the benchmarks, additional monitoring is required in year 2.
- ▶ Follow-up monitoring is required when benchmarks are exceeded to verify that BMPs have been modified to protect water quality.
- ▶ If monitoring indicates a continued exceedance, submit Exceedance Report to EPA within 30 days.

Follow-up Monitoring

- ▶ Modify SWPPP (14 days) and implement new or modified BMPs (prior to next precipitation event or 60 days).
- ▶ Within 30 days of implementing improved BMPs conduct follow-up monitoring; report data to EPA.



Electronic Application and Reporting (www.epa.gov/npdes/eNOI)



- ▶ "Notices of Intent" will again be filed electronically via EPA's eNOI system.
- ▶ All applicants will receive an electronic summary of their monitoring requirements.
- ▶ Online filing of monitoring data will also be available via the eNOI system.
- ▶ Electronic filers will receive reminder emails and instructions if benchmarks or limits are exceeded.

New Permit Eligibility Criteria



National Historic Preservation Act: Gives State Historic Preservation Office, Tribal Historic Preservation Office 30 days to review the NOI and decide whether or not to ask EPA to place the NOI on an administrative hold.

- ▶ **Endangered Species Act:** Criterion D was added: coordination between the operator and the USFWS resulted in a written statement from the USFWS that written statement that adverse effects are not likely.



Questions

EPA Stormwater Program

http://cfpub1.epa.gov/npdes/home.cfm?program_id=6

- ▶ Rick Sakow
CWA Compliance Office
U.S. EPA Region 9
(415) 972-3495
sakow.rick@epa.gov

- ▶ Eugene Bromley
▶ CWA Standards and Permits
▶ U.S. EPA Region 9
(415) 972-3510
bromley.eugene@epa.gov