

US EPA ARCHIVE DOCUMENT

Attachment 1

City of Union City GIS Storm Drain Map



509 ft
CityGIS

Copyright © 2006 All Rights Reserved. The information contained herein is the proprietary property of the contributor supplied under license and may not be approved except as licensed by Digital Map Products.

Attachment 2

Photos 1-3 taken by Chris Boykin, City of Union City on December 9, 2010



Electrochem cut storm drain 12-9-10



Storm water ponding rail spur 12-9-10



Storm water ponding due to drain cut at exit 12-9-10

**Attachment 3
Photograph Log**

Photograph Log for EPA's December 3, 2010 Electrochem Solutions RCRA and CWA Inspection

All photographs on this log were taken with a digital camera by Amy C. Miller, RCRA Enforcement Office, EPA Region IX, except as noted. Please note that each photograph number begins with "PC030" and that the photograph log starts with photograph number 001.

001. Outdoor sign for Electrochem Solutions.
002. Production Room: All of the contents in the flammable cabinet are solvents used in the production process.
003. Production Room: Solid waste trash container. Contaminated gloves and wipes observed within the trash container. Note: staining on glove.
004. Main Wet Processing Area: Two unlabeled 55-gallon containers of used gold strip (cyanide).
005. Main Wet Processing Area: Six 55-gallon containers of gold strip (cyanide) including the two containers in the previous photograph. Four containers are labeled with the waste name and accumulation start dates.
006. Main Wet Processing Area: Unknown liquid in an open container under a table adjacent to the six 55-gallon containers in previous photograph.
007. Main Wet Processing Area: An open and un-secured container of gold strip (cyanide) product.
008. Main Wet Processing Area: Open and unlabeled container of silver tarnish solution waste.
009. Main Wet Processing Area: A 55-gallon container of tin waste. Note: the label is smudged and difficult to read.
010. Main Wet Processing Area: Unused 10-foot deep lined containment area. Note: liquid can be seen on surface of the liner.
011. Main Wet Processing Area: Unused 10-foot deep lined containment area. Note: tear in the liner.

012. Anodizing Area: Open 55-gallon container of nickel waste. The label has no accumulation start date.
013. Anodizing Area: Close up of label from previous photograph.
014. Anodizing Area: Overview shot of eleven 55-gallon containers of nickel, sulfamate, and hydrochloric acid waste.
015. Anodizing Area: Close up of the label for the hydrochloric acid 55-gallon container. Note: no accumulation start date or other required labeling information.
016. Anodizing Area: Open, cut top 55-gallon container labeled "water waste." The label has no accumulation start date or other required labeling information.
017. Anodizing Area: Close up of the label on the 55-gallon container in the previous photograph.
018. Anodizing Area: Inside of trash can containing contaminated gloves.
019. Anodizing Area: Open and unlabeled cut 55-gallon container. Facility representative stated that it contained dichromate waste water.
020. Anodizing Area: Open cut top 55-gallon container labeled "rinse water." Facility representative stated that it contained nitric acid and 40% nickel strip wastewater.
021. Anodizing Area: Seven 55-gallon containers. There is one product container, one nitric acid waste container, and five nickel waste containers. None of the waste containers had accumulation start dates or other required labeling information.
022. Anodizing Area: An open 5-gallon container of unknown substance.
023. Anodizing Area: Open cut top 55-gallon container labeled "waste water." Facility representative stated it was placed in the location to collect rain water from a leak in the roof.
024. Utility Room: Nine 55-gallon containers of glycol product. Note: the bungs on two of the containers were open.
025. Utility Room: Leaking pipes.
026. Utility Room: Concrete under leaking pipes in previous photograph is corroded.
027. Water Treatment and Equipment Area: Three 55-gallon containers of cyanide solution waste with hazardous waste labels.

028. Water Treatment and Equipment Area: Close up of the hazardous waste label on one of three 55-gallon containers of cyanide solution in previous photograph. Note: 9/18/10 was the earliest accumulation start date on these three containers.
029. Water Treatment and Equipment Area: Overview of the area facing towards outdoor area. Note: three open and cut top 55-gallon containers in close proximity to the door, bypassing the sump.
030. Water Treatment and Equipment Area: Overview of the area with approximately eleven 55-gallon containers of waste.
031. Water Treatment and Equipment Area: Overview of the area facing towards the outdoor area. Note: four 55-gallon containers adjacent to wastewater treatment equipment. Two are open top.
032. Water Treatment and Equipment Area: An open top cut 55-gallon container with waste material.
033. Water Treatment and Equipment Area: Close up view of the three open and cut top 55 gallon containers in photograph 029.
034. Bulk Waste Processing Area: View of the area from the entryway from the Water Treatment and Equipment Area. Note: numerous containers are open and unlabeled.
035. Bulk Waste Processing Area: The roof corroded off this portion of the building.
036. Bulk Waste Processing Area: Six open top 55-gallon containers and one long rectangular container. One of the containers is labeled "sludge."
037. Bulk Waste Processing Area: Two open top 55-gallon containers. One of the containers is labeled "water etch."
038. Bulk Waste Processing Area: One open top 55-gallon container labeled "sludge."
039. Bulk Waste Processing Area: Three open top 55-gallon containers placed near the fence, bypassing the sump and perimeter wall.
040. Bulk Waste Processing Area: Ten open top 55-gallon containers and one 5-gallon open container and one 5-gallon closed container.
041. Bulk Waste Processing Area: Approximately fourteen open top 55-gallon containers.
042. Bulk Waste Processing Area: Liquid observed on the floor in the area. The floor is lined, although torn in some locations.

043. Bulk Waste Processing Area: Approximately seventeen open top 55-gallon containers.
044. Bulk Waste Processing Area: Approximately seventeen open top 55-gallon containers. Note: liquid on the ground.
045. Bulk Waste Processing Area: An open top 5-gallon container. Note: liquid on the ground.
046. Bulk Waste Processing Area: Filter press. Open tray with liquid underneath press.
047. Bulk Waste Processing Area: Three open top 55-gallon containers, three open top 5-gallon containers and two closed 5-gallon containers.
048. Bulk Waste Processing Area: Open top bin with liquid inside.
049. Bulk Waste Processing Area: Open top containers of various sizes with liquid inside.
050. Bulk Waste Processing Area: View of evaporator and corroded walls and roof.
051. Bulk Waste Processing Area: Hazardous waste label on bin of F007 waste. The accumulation start date is 12/1/10.
052. Bulk Waste Processing Area: An open 55-gallon container with various unlabeled containers inside.
053. Bulk Waste Processing Area: Tank labeled "Nitric Waste Acid."
054. Bulk Waste Processing Area: Three open 5-gallon containers. One container has an unknown liquid.
055. Outdoor Area: View from backside of the building.
056. Outdoor Area: Obsolete plating fixtures adjacent to trash bins.
057. Outdoor Area: Area immediately adjacent to the Water Treatment and Equipment Area. Note area slopes towards outdoor area. The area is wet from inside the building down to the Di water tanks.
058. Outdoor Area: storm drain approximately 30 feet from the back of the building.
059. Outdoor Area: View of storm drain in relationship to the building. Closest part of the building is the Less than 90-day Hazardous Waste Accumulation Area (Waste Chemical Storage).

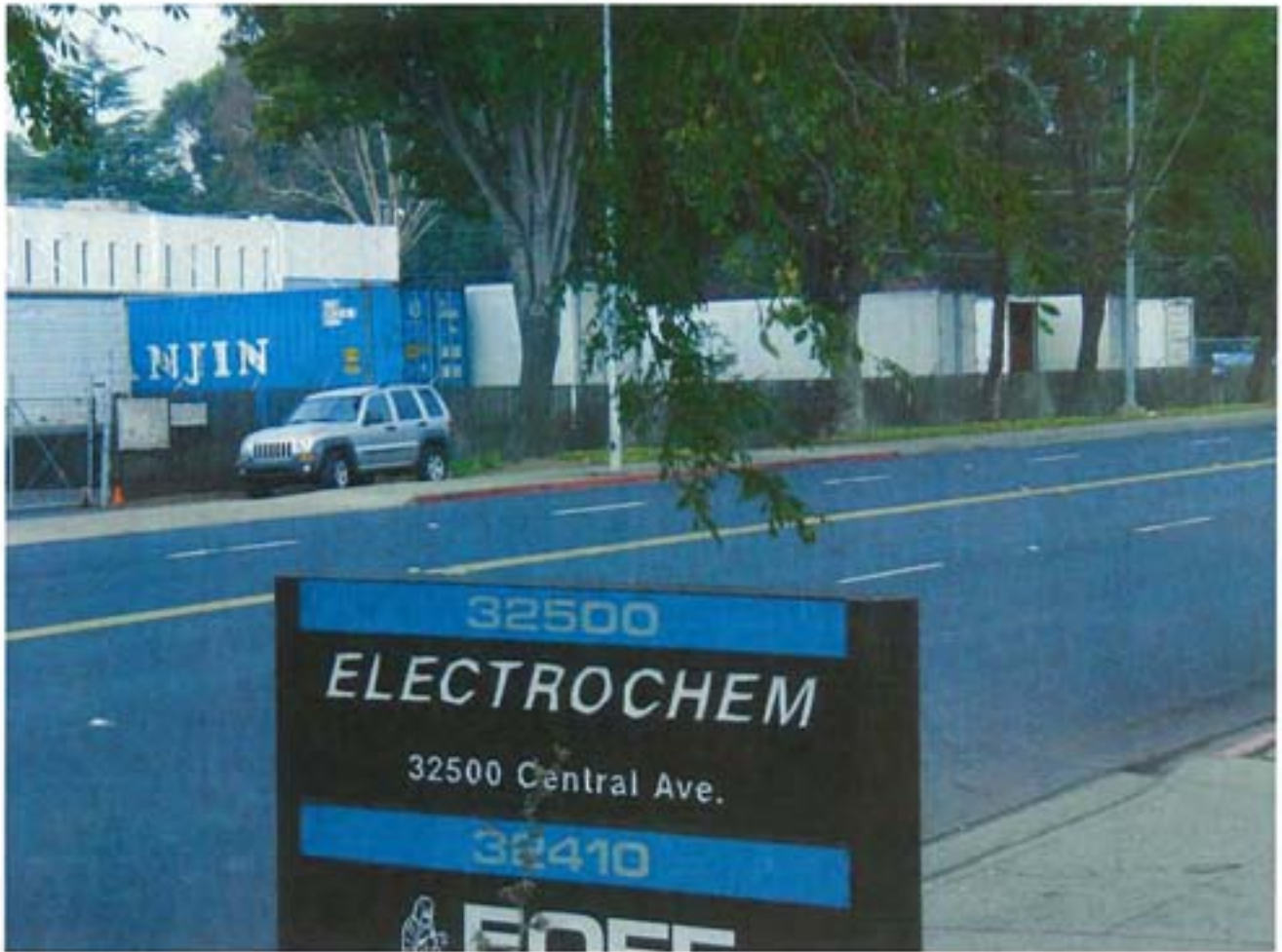
060. Outdoor Area: View from the outdoor area the Water Treatment and Equipment Area, Bulk Waste Processing Area, and Maintenance Shop. Note puddle of liquid near forklift and Water Treatment and Equipment Area.
061. Outdoor Area: Empty container and debris behind storage trailer.
062. Outdoor Area: Open garbage bin with debris and open containers inside.
063. Outdoor Area: Open garbage bin behind storage trailers as seen in previous photograph.
064. Outdoor Area: Obsolete equipment and fixtures stored behind the storage trailers.
065. Outdoor Area: Shredded containers and other debris stored behind the storage trailers.
066. Outdoor Area: Metal parts and a 55-gallon container of scrap metal next to storage trailers.
067. Outdoor Area: Obsolete equipment and fixtures stored behind the storage trailers.
068. Outdoor Area: Obsolete process tank containing unknown liquid .
069. Outdoor Area: Discarded plating bath with unknown liquid inside.
070. Water Treatment and Equipment Area: Sample box and pH meter for sewer discharge.
071. Water Treatment and Equipment Area: Close up of pH meter. Note: the pH meter is not functioning.
072. Less than 90-day Hazardous Waste Accumulation Area (Waste Chemical Storage): Area is lined. There are approximately thirty 55-gallon containers and approximately two 5-gallon containers in the photograph. Containers along the short wall are open and labeled as "filters" and "liners." The floor in this area is stained, but lined. Many labels on the containers could not be read. One container label in view reads "nickel strip" and another states "gold alodine."
073. Less than 90-day Hazardous Waste Accumulation Area (Waste Chemical Storage): Approximately forty 55-gallon containers and in some places triple stacked. A bin with a sheet of wood on top is located in the foreground.
074. Less than 90-day Hazardous Waste Accumulation Area (Waste Chemical Storage): Approximately twenty-five 55-gallon containers. Many labels on the

- containers could not be read. One container label in view states "nickel strip" and the other states "gold alodine."
075. Less than 90-day Hazardous Waste Accumulation Area (Waste Chemical Storage): One hazardous waste label partially in view on one of the containers states "resin waste."
076. Less than 90-day Hazardous Waste Accumulation Area (Waste Chemical Storage): Slot drain located along entry to the storage area. Note that containers are stored on top of drain. Piping from rain gutter drains at the entry of the storage area. Note white-colored pavement from roof drain.
077. Less than 90-day Hazardous Waste Accumulation Area (Waste Chemical Storage): Slot drain is full of liquid.
078. Less than 90-day Hazardous Waste Accumulation Area (Waste Chemical Storage): One of three 55-gallon container of cyanide waste filter label has an accumulation start date of 8/4/10.
079. Less than 90-day Hazardous Waste Accumulation Area (Waste Chemical Storage): Another view of slot drain seen in photograph 077 full of liquid.
080. Less than 90-day Hazardous Waste Accumulation Area (Waste Chemical Storage): View of storm drain from the slot drain at the hazardous waste storage area.
081. Less than 90-day Hazardous Waste Accumulation Area (Waste Chemical Storage): One of three 55-gallon container of cyanide waste filter label has an accumulation start date of 8/4/10.
082. Less than 90-day Hazardous Waste Accumulation Area (Waste Chemical Storage): One of three 55-gallon container of cyanide waste filter label has an accumulation start date of 8/4/10. Note: the bung on the container is open.
083. Less than 90-day Hazardous Waste Accumulation Area (Waste Chemical Storage): Another view of the triple stacked 55-gallon containers seen in photograph 073.
084. Less than 90-day Hazardous Waste Accumulation Area (Waste Chemical Storage): A label seen on one of the 55-gallon containers is faded and appears to have an accumulation start date of 1/19/09. Note: container is corroded (*photograph taken by John Schofield*).
085. Less than 90-day Hazardous Waste Accumulation Area (Waste Chemical Storage): No label in view on the 55-gallon container. Note: the bird waste on container (*photograph taken by John Schofield*).

086. Less than 90-day Hazardous Waste Accumulation Area (Waste Chemical Storage): No label in view on the 55-gallon container. Note: the bird waste on container (*photograph taken by John Schofield*).
087. Less than 90-day Hazardous Waste Accumulation Area (Waste Chemical Storage): Label in view on the 55-gallon container, but picture is blurred. Note: the bird waste on container (*photograph taken by John Schofield*).
088. Less than 90-day Hazardous Waste Accumulation Area (Waste Chemical Storage): Label in view on the 55-gallon container, but picture is blurred. Note: the bird waste on container (*photograph taken by John Schofield*).
089. Less than 90-day Hazardous Waste Accumulation Area (Waste Chemical Storage): Same 55-gallon container in photograph 084. Note that the container has liquid on top and is corroded (*photograph taken by John Schofield*).
090. Less than 90-day Hazardous Waste Accumulation Area (Waste Chemical Storage): 55-gallon container is covered with bird waste. Label is smudged (*photograph taken by John Schofield*).
091. Less than 90-day Hazardous Waste Accumulation Area (Waste Chemical Storage): Label on a 55-gallon container covered with bird waste. The label is blurred but the accumulation start date starts with 12/20 and states the material is "waste resin" (*photograph taken by John Schofield*).
092. Less than 90-day Hazardous Waste Accumulation Area (Waste Chemical Storage): Same as photograph 075, a label on a 55-gallon container of hazardous waste is partially in view and states the material is "resin" (*photograph taken by John Schofield*).
093. Less than 90-day Hazardous Waste Accumulation Area (Waste Chemical Storage): Same container as previous photograph (*photograph taken by John Schofield*).
094. Less than 90-day Hazardous Waste Accumulation Area (Waste Chemical Storage): Label on 55 gallon container states material is "Bright Dip" (*photograph taken by John Schofield*).
095. Less than 90-day Hazardous Waste Accumulation Area (Waste Chemical Storage): The label on the 55-gallon container in photographs 075, 092, 093. The accumulation state date is 12/20/07 (*photograph taken by John Schofield*).
096. Less than 90-day Hazardous Waste Accumulation Area (Waste Chemical Storage): Same as previous photograph (*photograph taken by John Schofield*).

097. Less than 90-day Hazardous Waste Accumulation Area (Waste Chemical Storage): Slot drain in middle of storage area is full of bird waste (*photograph taken by John Schofield*).
098. Maintenance Shop: Open 5-gallon container of unknown substance.
099. Maintenance Shop: Two 2-gallon containers labeled as "oil."
100. Maintenance Shop: A 5-gallon container captures liquid from a machine.
101. Maintenance Shop: An open 55-gallon container with debris inside.
102. Maintenance Shop: An open 5-gallon container of unknown material.
103. Maintenance Shop: Four 5-gallon open containers of product sand.
104. Maintenance Shop: Product in the flammable cabinet. Picture is blurred.
105. Maintenance Shop: Same as previous photograph.
106. Maintenance Shop: Unlabeled product containers in the flammable cabinet.
107. Maintenance Shop: Unlabeled product containers in the flammable cabinet.
108. Maintenance Shop: 2-gallon container labeled as "oil." Same container in photograph 099.
109. Maintenance Shop: 2-gallon container labeled as "oil." Same container in photograph 099.
110. Chemical Storage: Three 2-gallon old product containers. One label is faded. Another is written over with the words "Acid" and "Polish."
111. Chemical Storage: Close up of one of the 2-gallon containers in the previous photograph.
112. Chemical Lab: Trash can containing contaminated gloves.
113. Chemical Lab: A 2-gallon unlabeled container of cyanide waste.
114. Chemical Lab: Various containers under the sink including two 2-gallon unlabeled containers of cyanide waste.
115. John Schofield monitoring pH levels in sewer sample box located in the Water Treatment and Equipment Area (*photograph taken by Chris Boykin*).

116. John Schofield monitoring pH levels in sample box located in the Water Treatment and Equipment Area (*photograph taken by Chris Boykin*).
117. John Schofield monitoring pH levels of evaporator liquid/solids from Evaporator Tank located in the Bulk Waste Processing Area. The pH monitoring was performed in the Water Treatment and Equipment Area (*photograph taken by Chris Boykin*).
118. John Schofield monitoring pH levels in hazardous waste treatment container located in the Bulk Waste Processing Area (*photograph taken by Chris Boykin*).
119. Photograph of tear in liner Bulk Waste Processing Area (*photograph taken by Chris Boykin*).
120. John Schofield monitoring pH levels in hazardous waste treatment container located in the Bulk Waste Processing Area (*photograph taken by Chris Boykin*).
121. John Schofield monitoring pH levels in hazardous waste treatment container located in the Bulk Waste Processing Area (*photograph taken by Chris Boykin*).
122. John Schofield monitoring pH levels in hazardous waste treatment container located in the Bulk Waste Processing Area (*photograph taken by Chris Boykin*).
123. John Schofield monitoring pH levels in hazardous waste treatment container located in the Bulk Waste Processing Area (*photograph taken by Chris Boykin*).
124. John Schofield monitoring pH levels in hazardous waste treatment container located in the Bulk Waste Processing Area (*photograph taken by Chris Boykin*).
125. John Schofield monitoring pH levels in hazardous waste treatment container located in the Bulk Waste Processing Area (*photograph taken by Chris Boykin*).
126. John Schofield monitoring pH levels in hazardous waste treatment container located in the Bulk Waste Processing Area (*photograph taken by Chris Boykin*).



PC030001



PC030002



PC030003



PC030004



PC030005



PC030006



PC030007



PC030008



PC030009



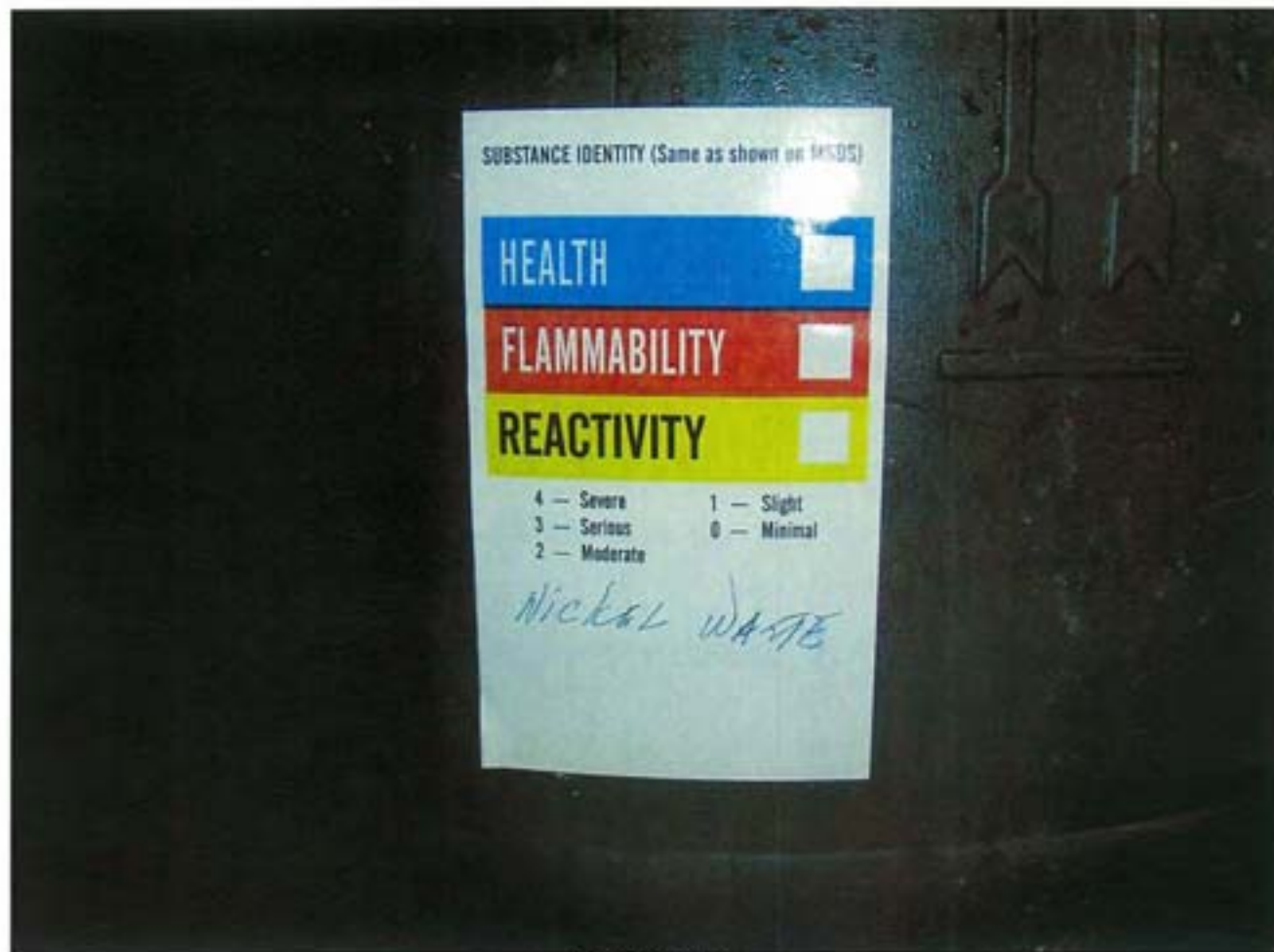
PC030010



PC030011



PC030012



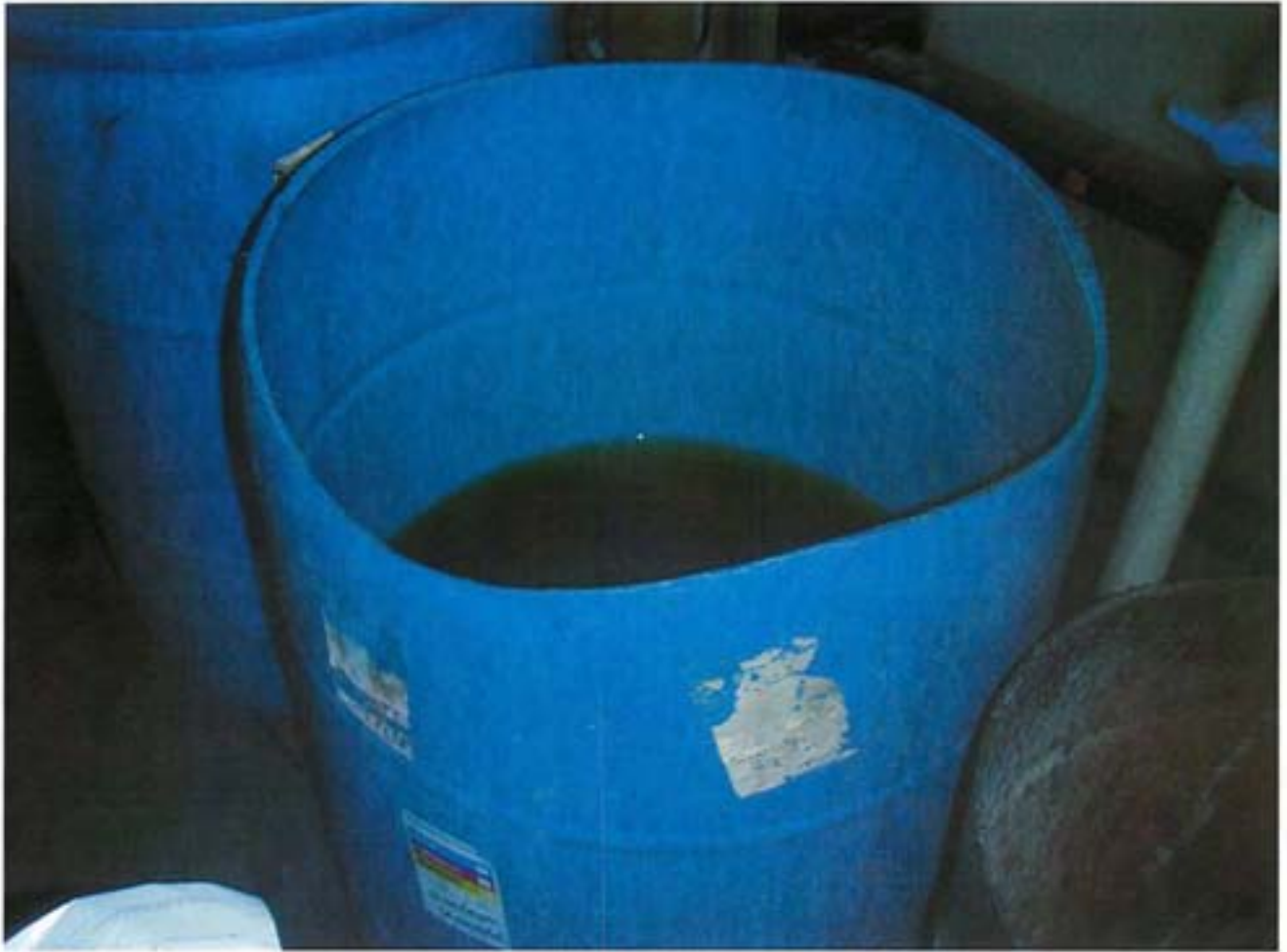
PC030013



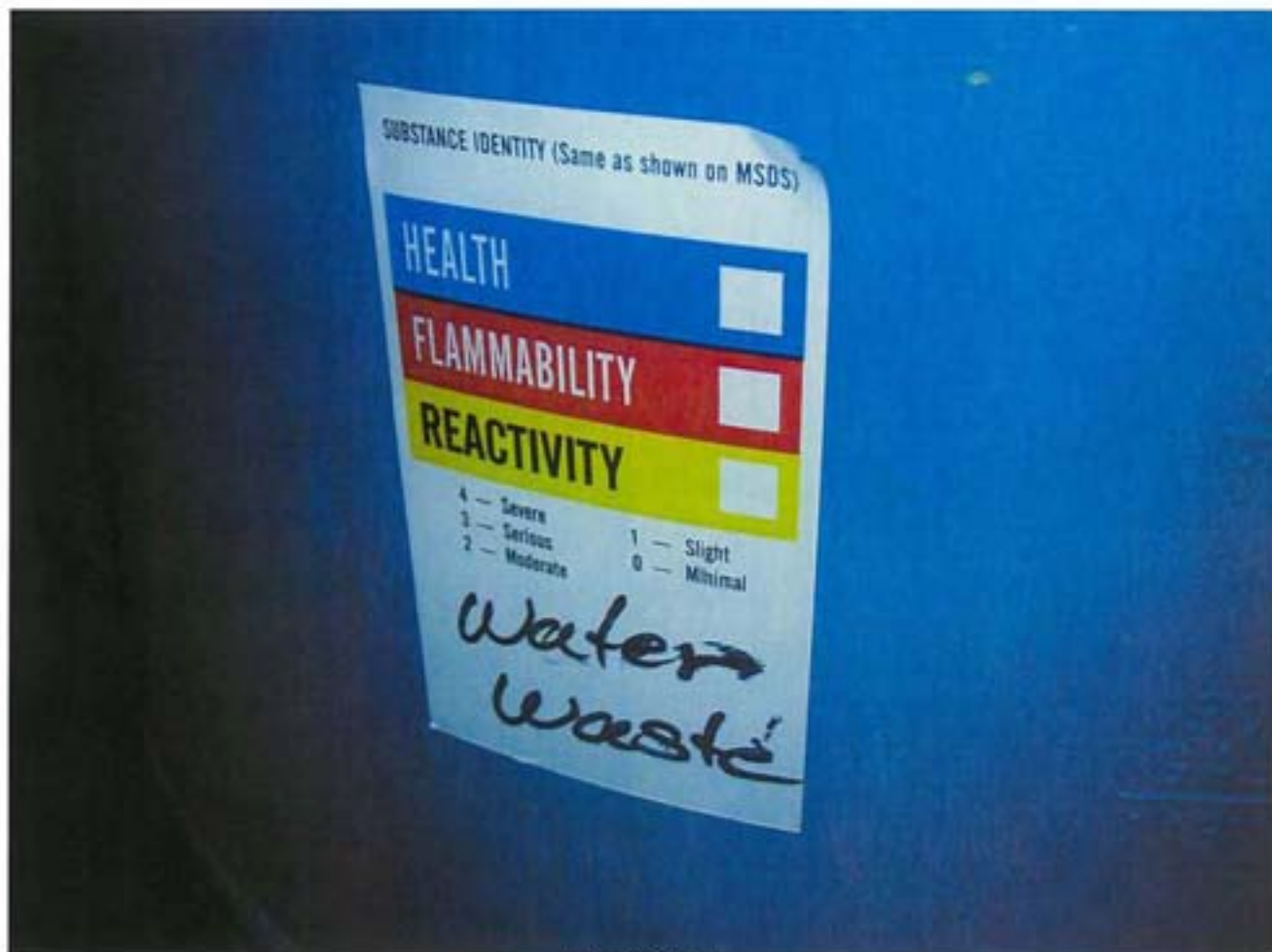
PC030014



PC030015



PC030016



PC030017



PC030018



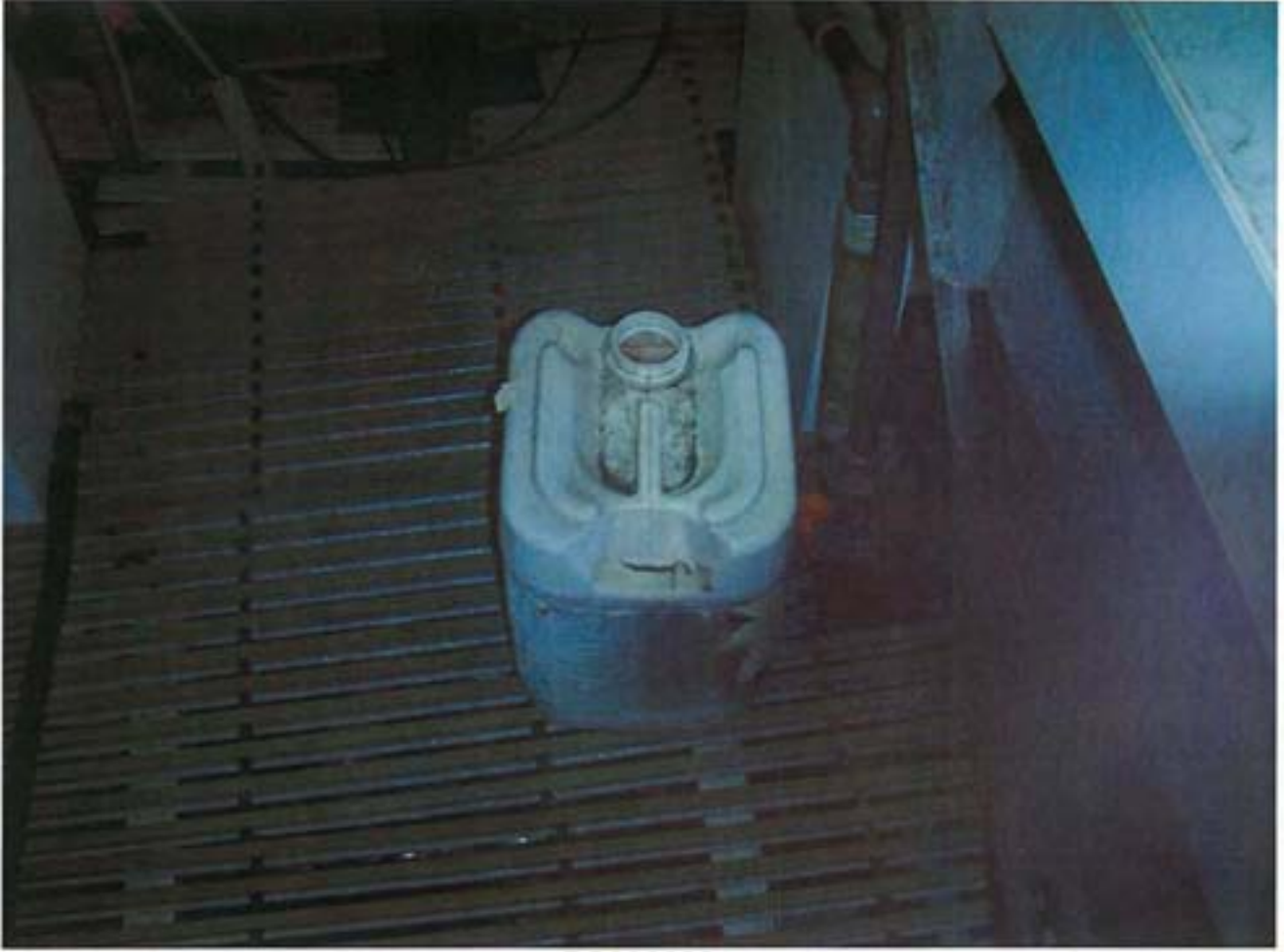
PC030019



PC030020



PC030021



PC030022



PC030023



PC030024



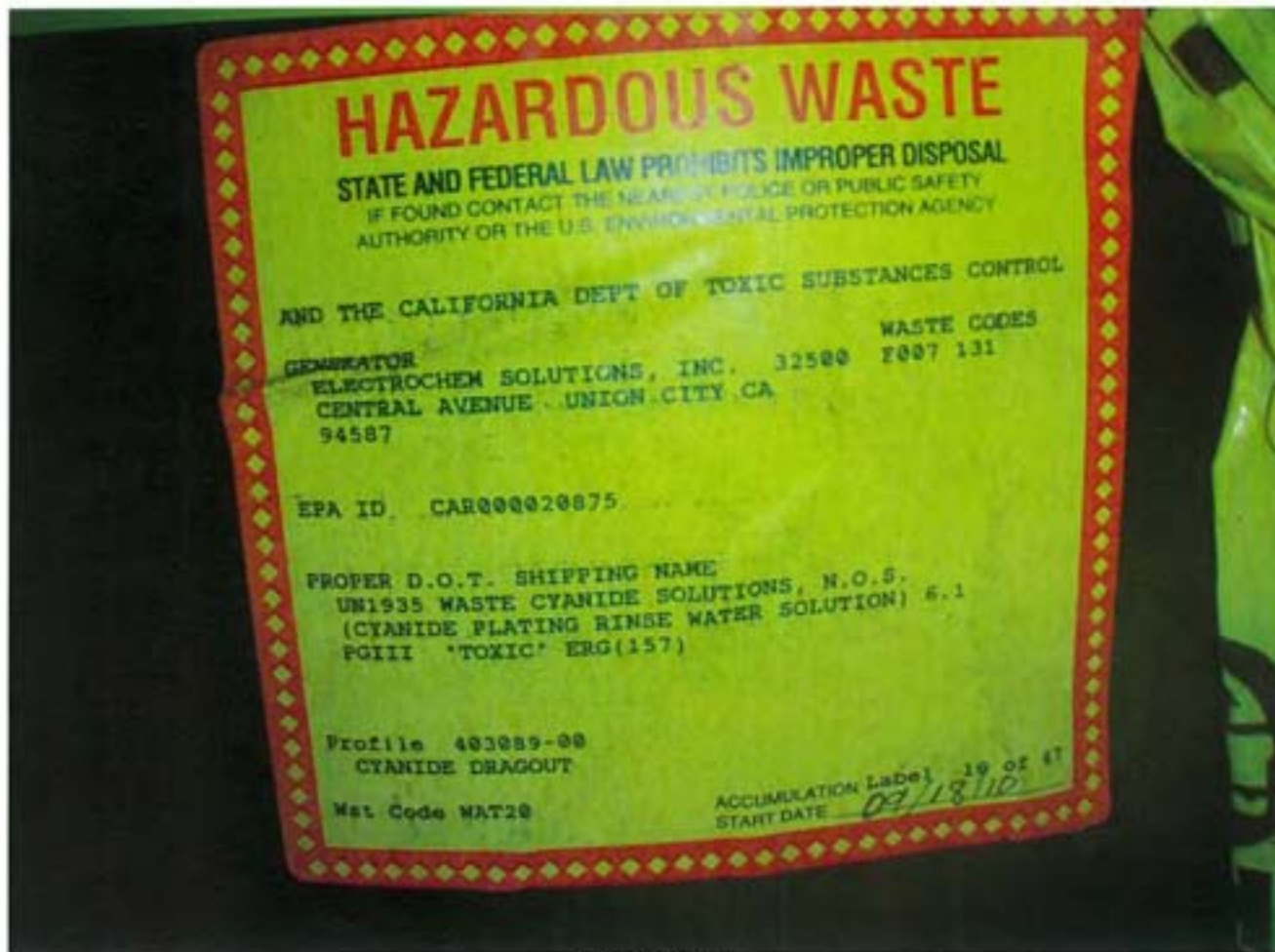
PC030025



PC030026



PC030027



PC030028



PC030029



PC030030



PC030031



PC030032



PC030033



PC030034



PC030035



PC030036



PC030037



PC030038



PC030039



PC030040



PC030041



PC030042



PC030043



PC030044



PC030045



PC030046



PC030047



PC030048



PC030049



PC030050



PC030051



PC030052



PC030053



PC030054



PC030055



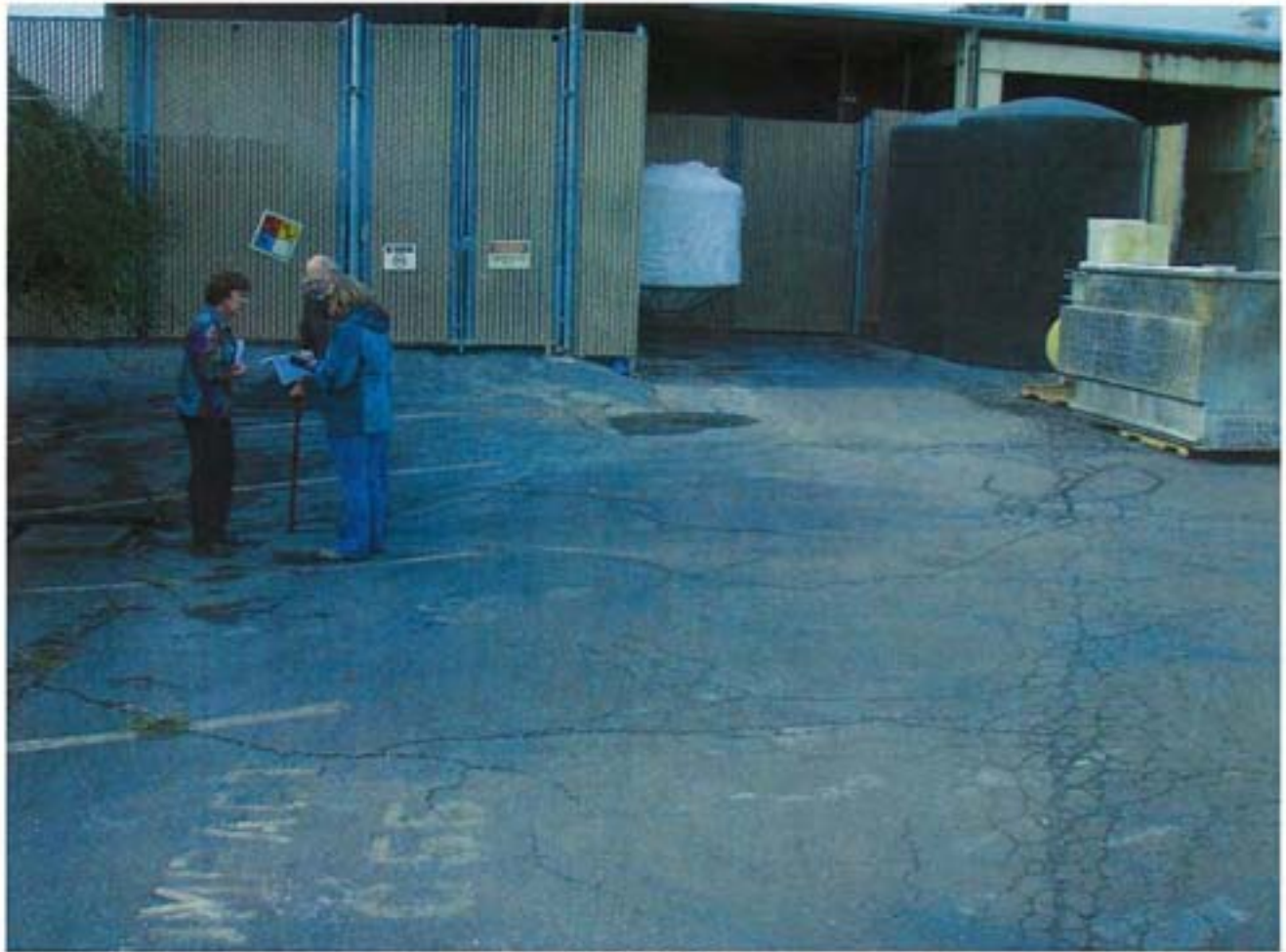
PC030056



PC030057



PC030058



PC030059



PC030060



PC030061



PC030062



PC030063



PC030064



PC030065



PC030066



PC030067



PC030068



PC030069



PC030070



PC030071



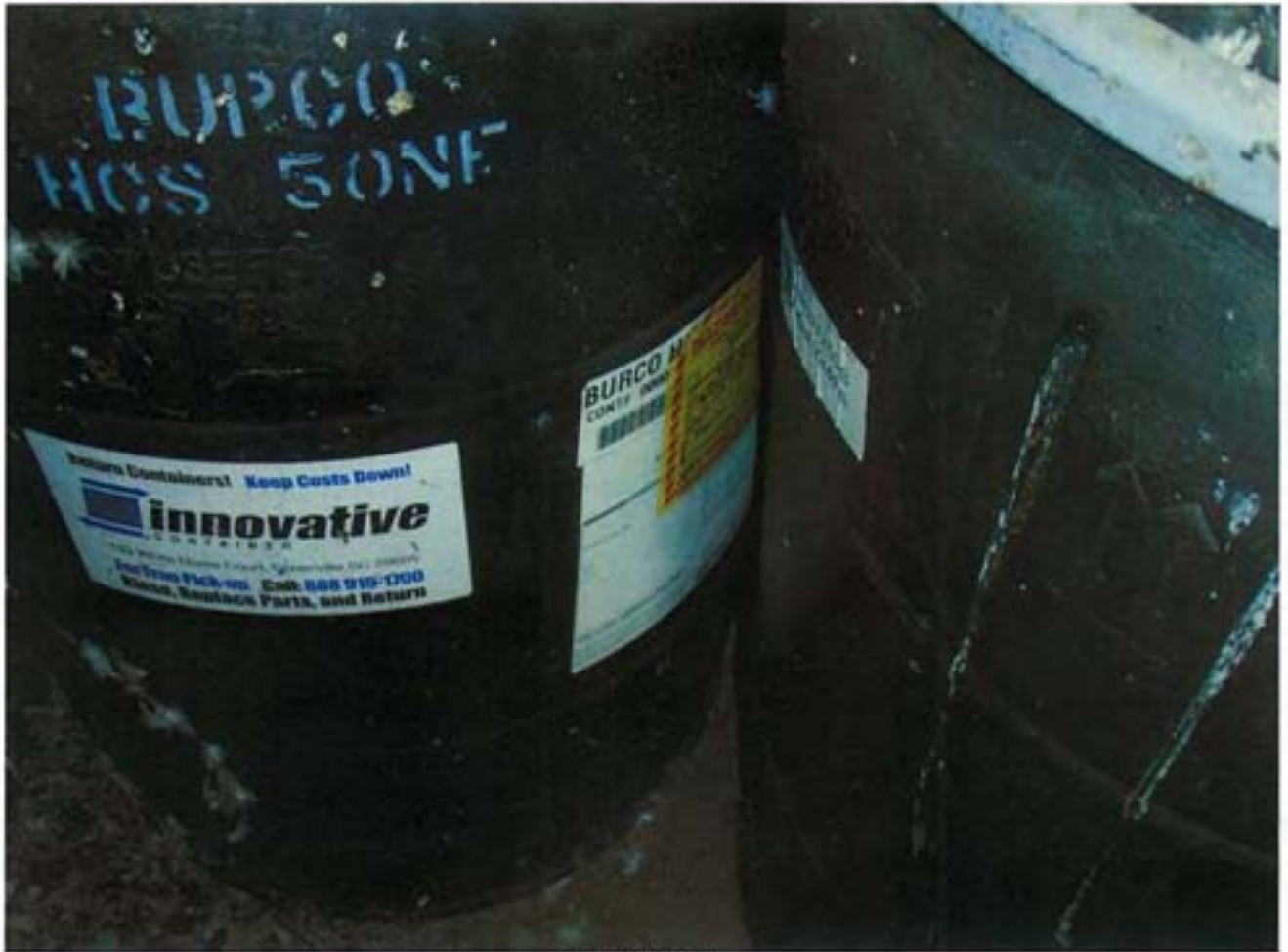
PC030072



PC030073



PC030074



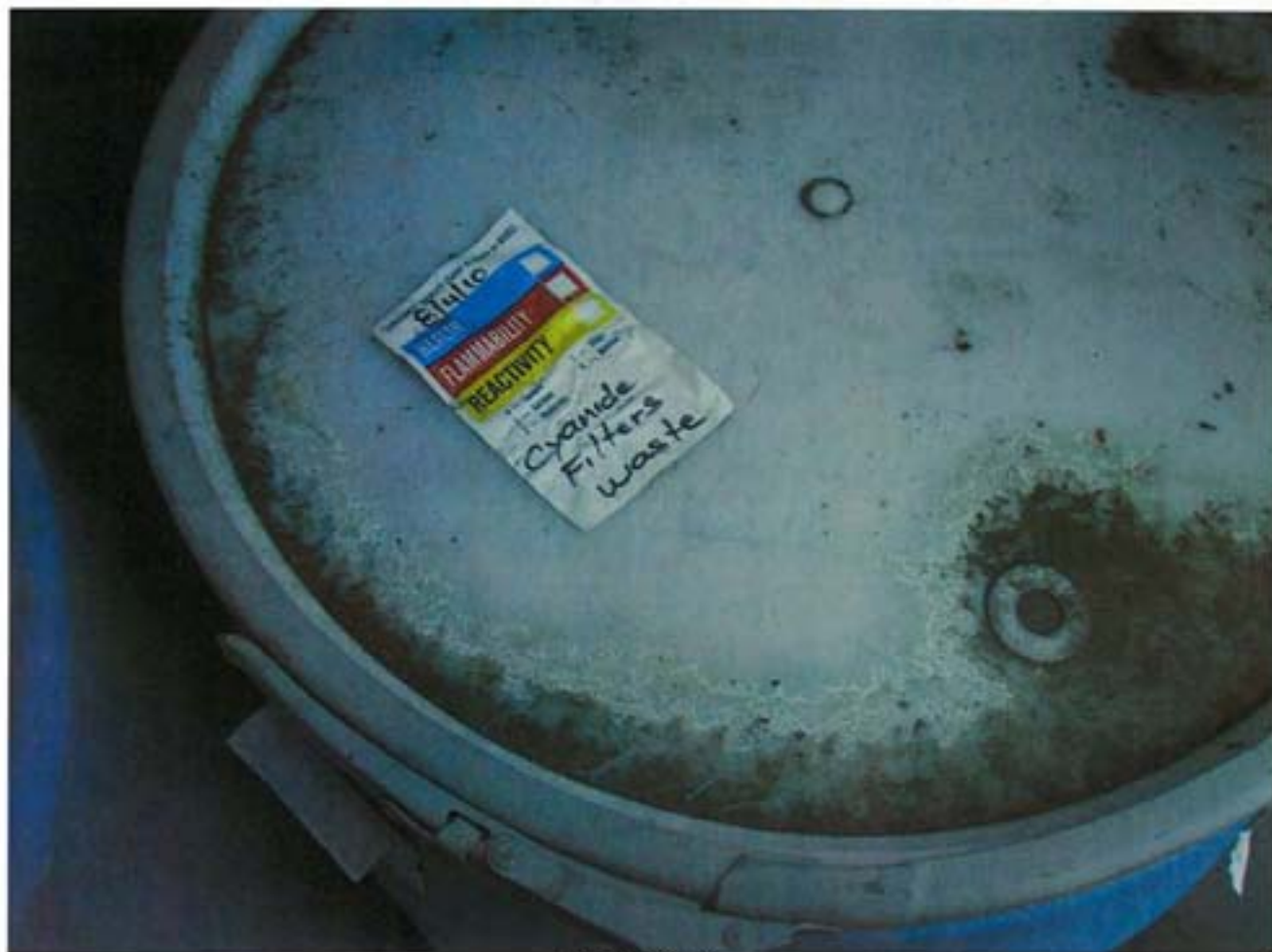
PC030075



PC030076



PC030077



PC030078



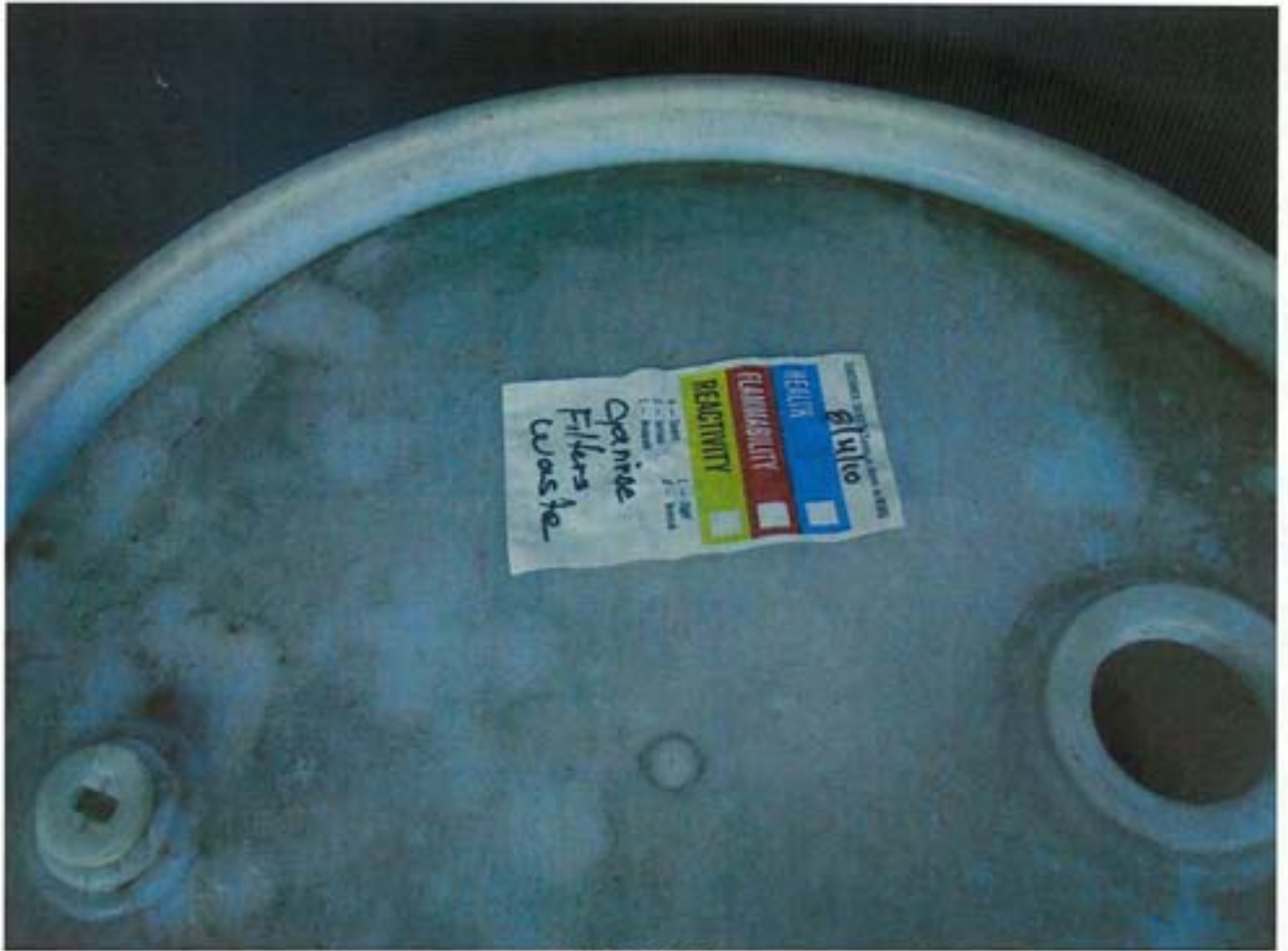
PC030079



PC030080



PC030081



PC030082



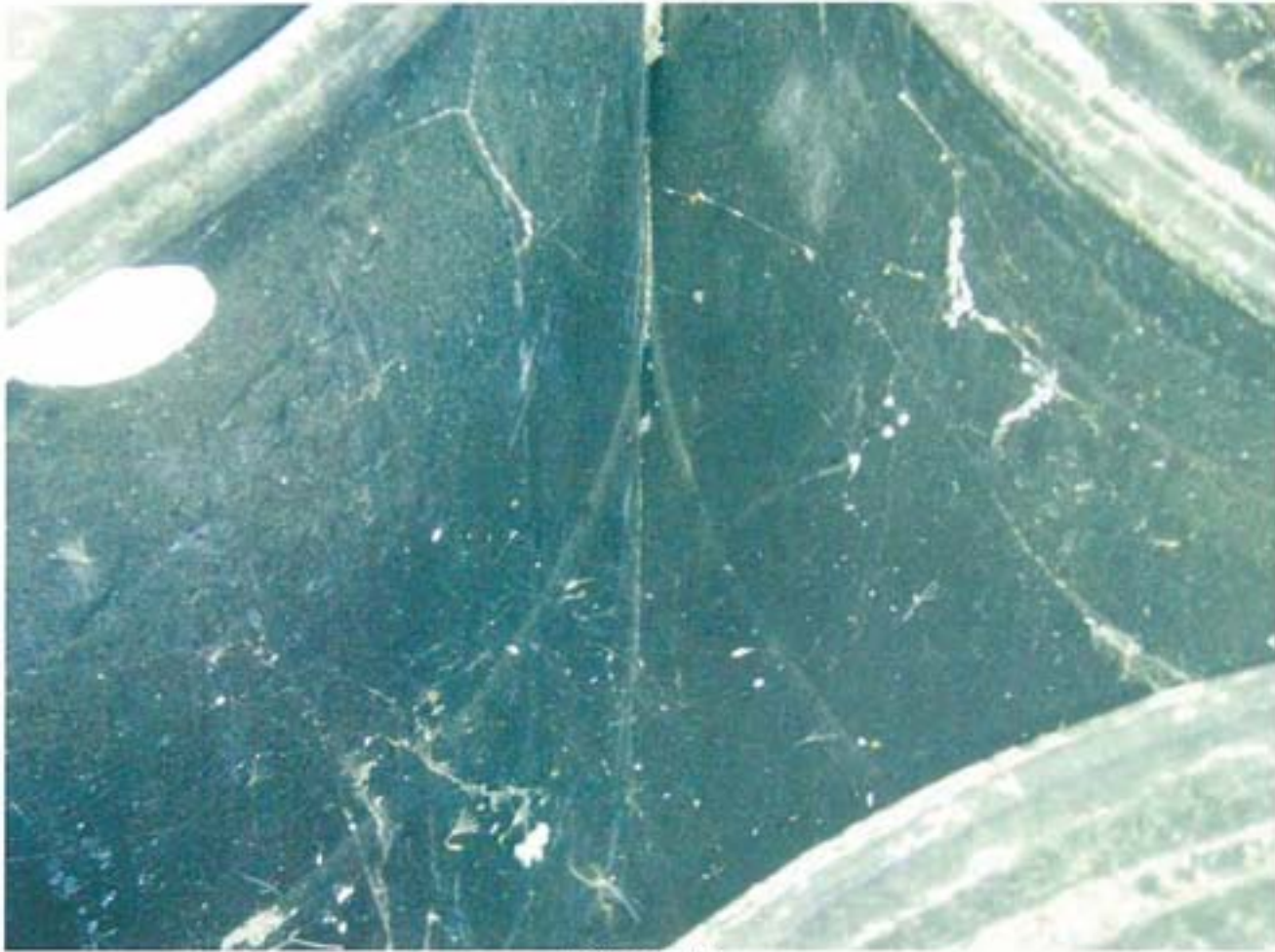
PC030083



PC030084



PC030085



PC030086



PC030087



PC030088



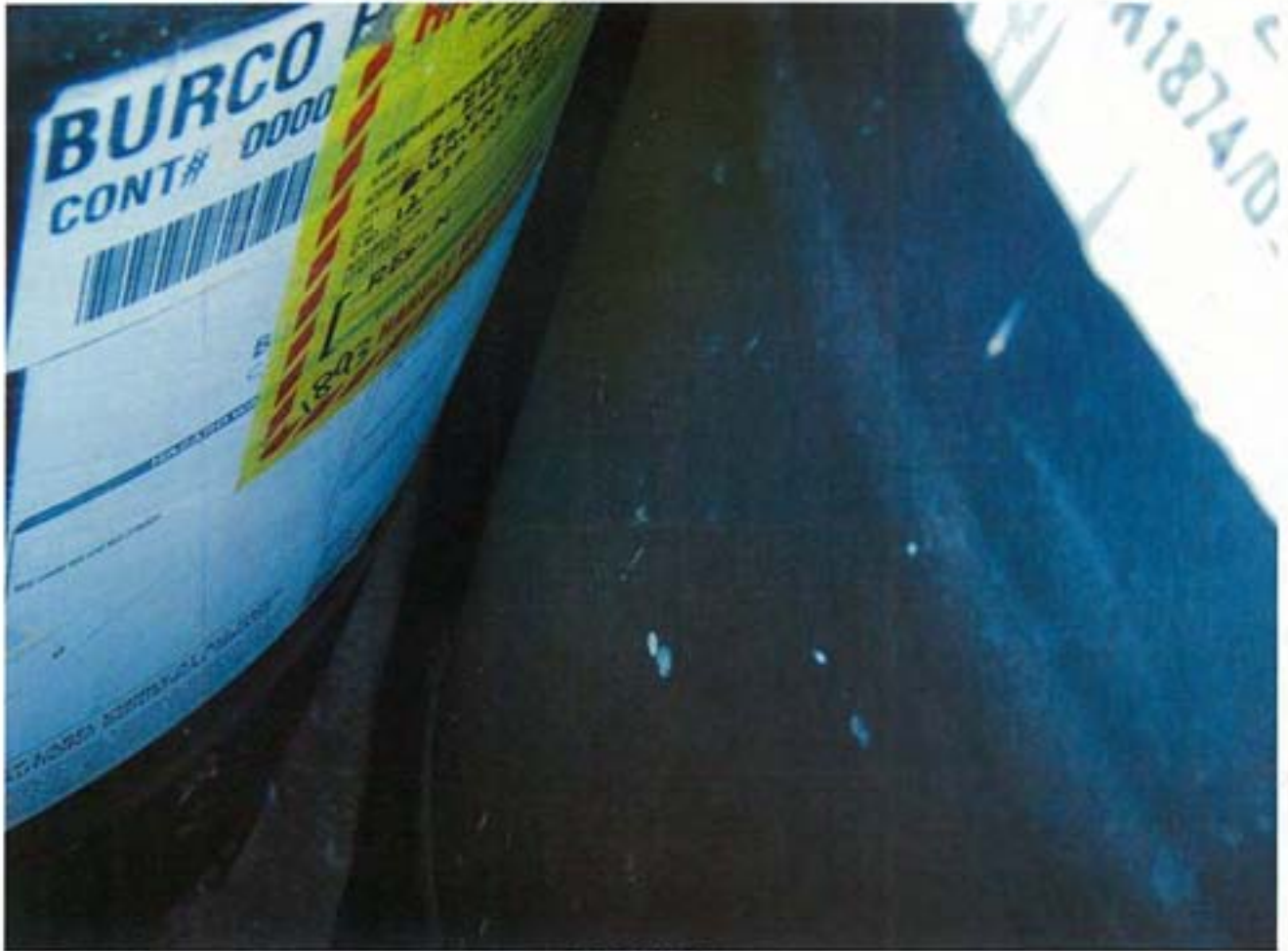
PC030089



PC030090



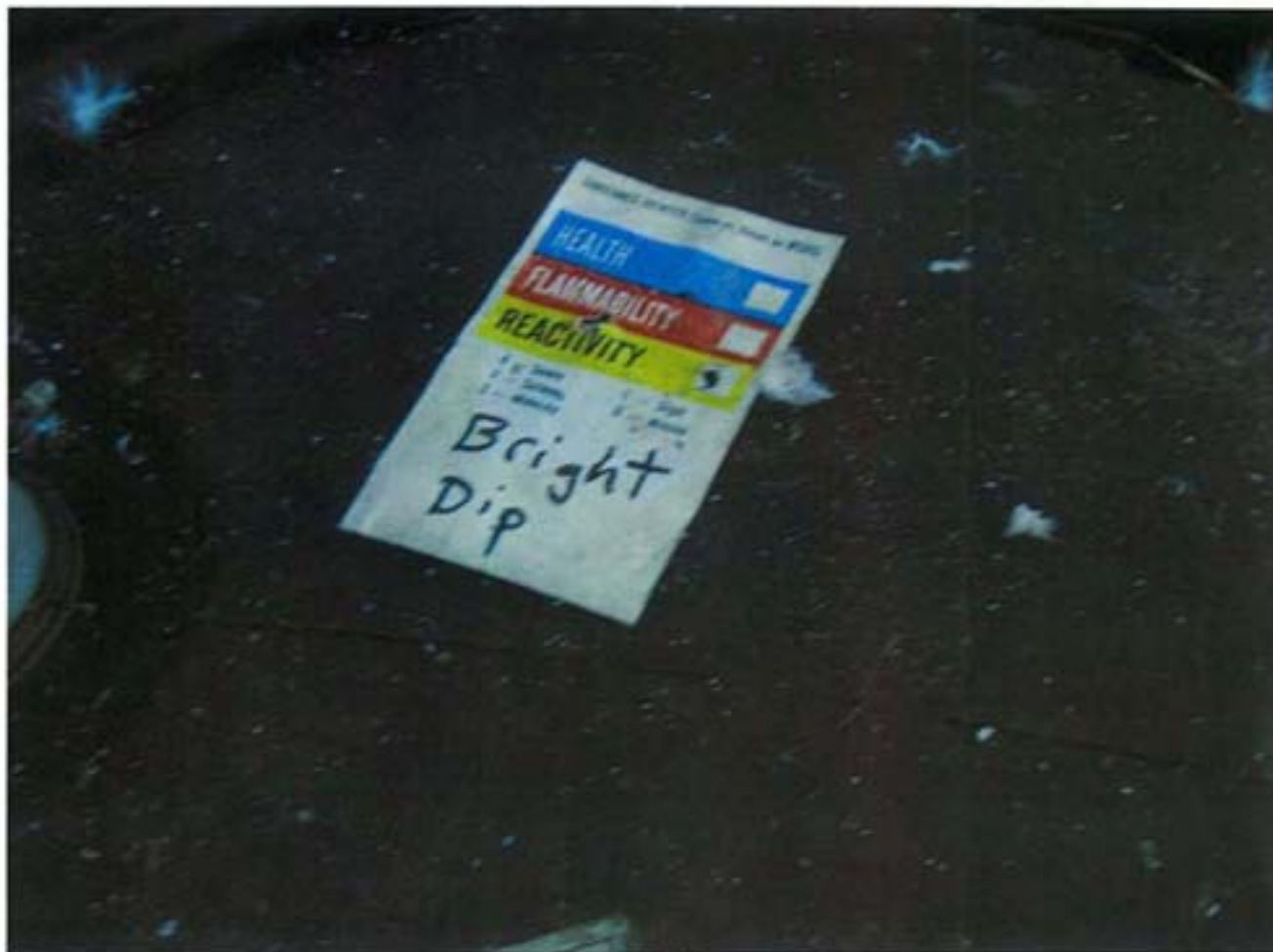
PC030091



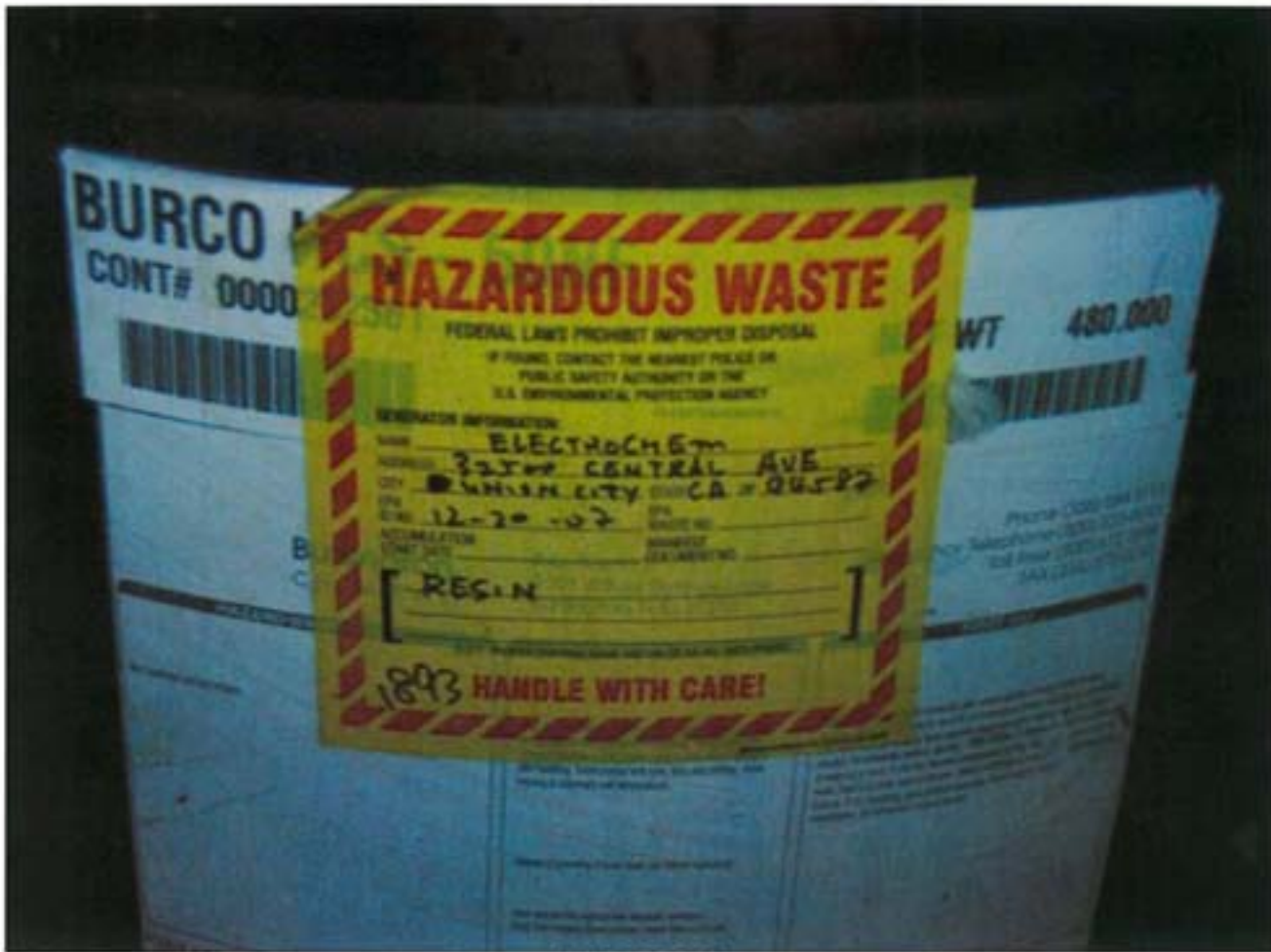
PC030092



PC030093



PC030094



PC030095



PC030096



PC030097



PC030098



PC030099



PC030100



PC030101



PC030102



PC030103



PC030104



PC030105



PC030106



PC030107



PC030108



PC030109



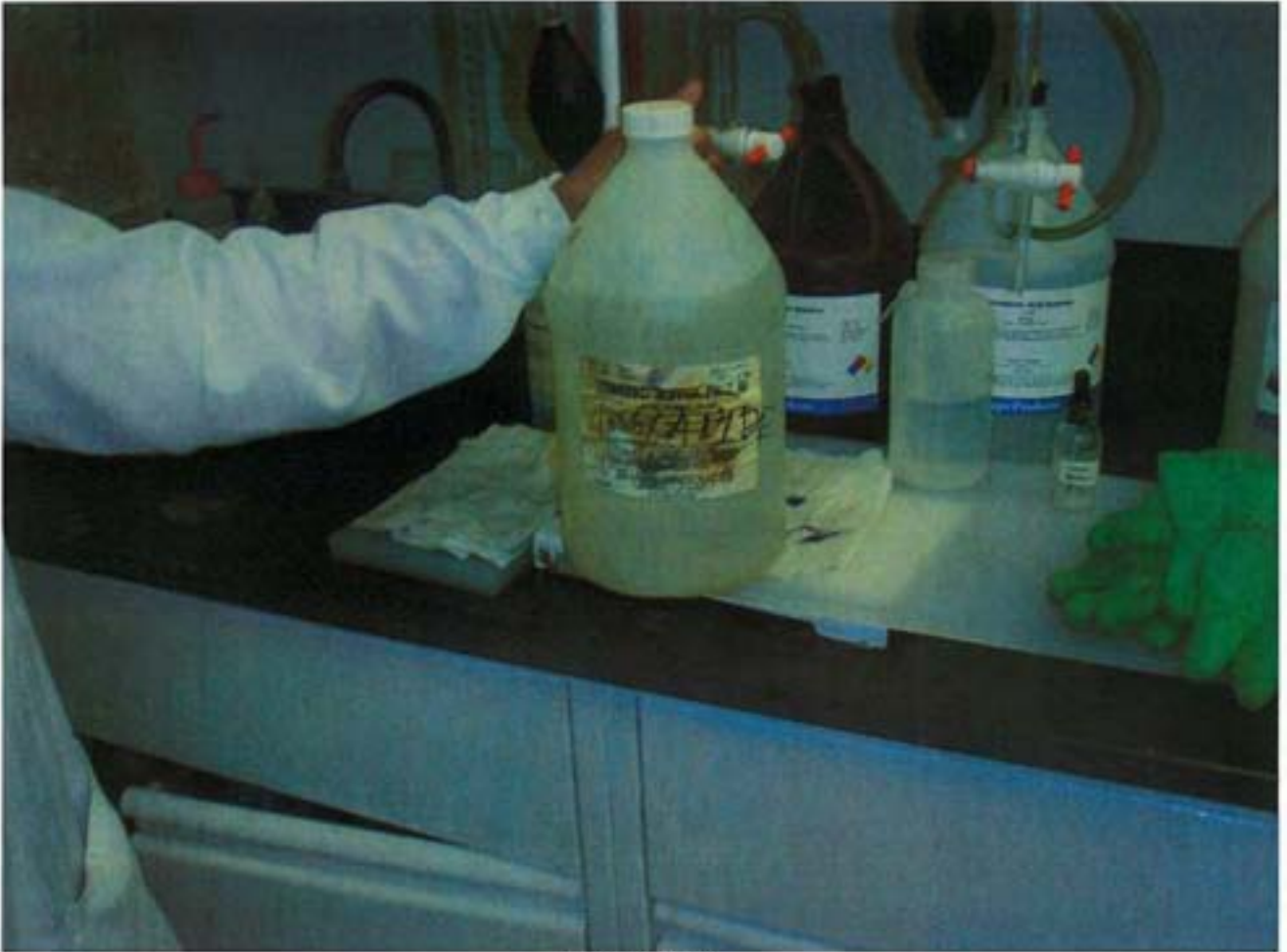
PC030110



PC030111



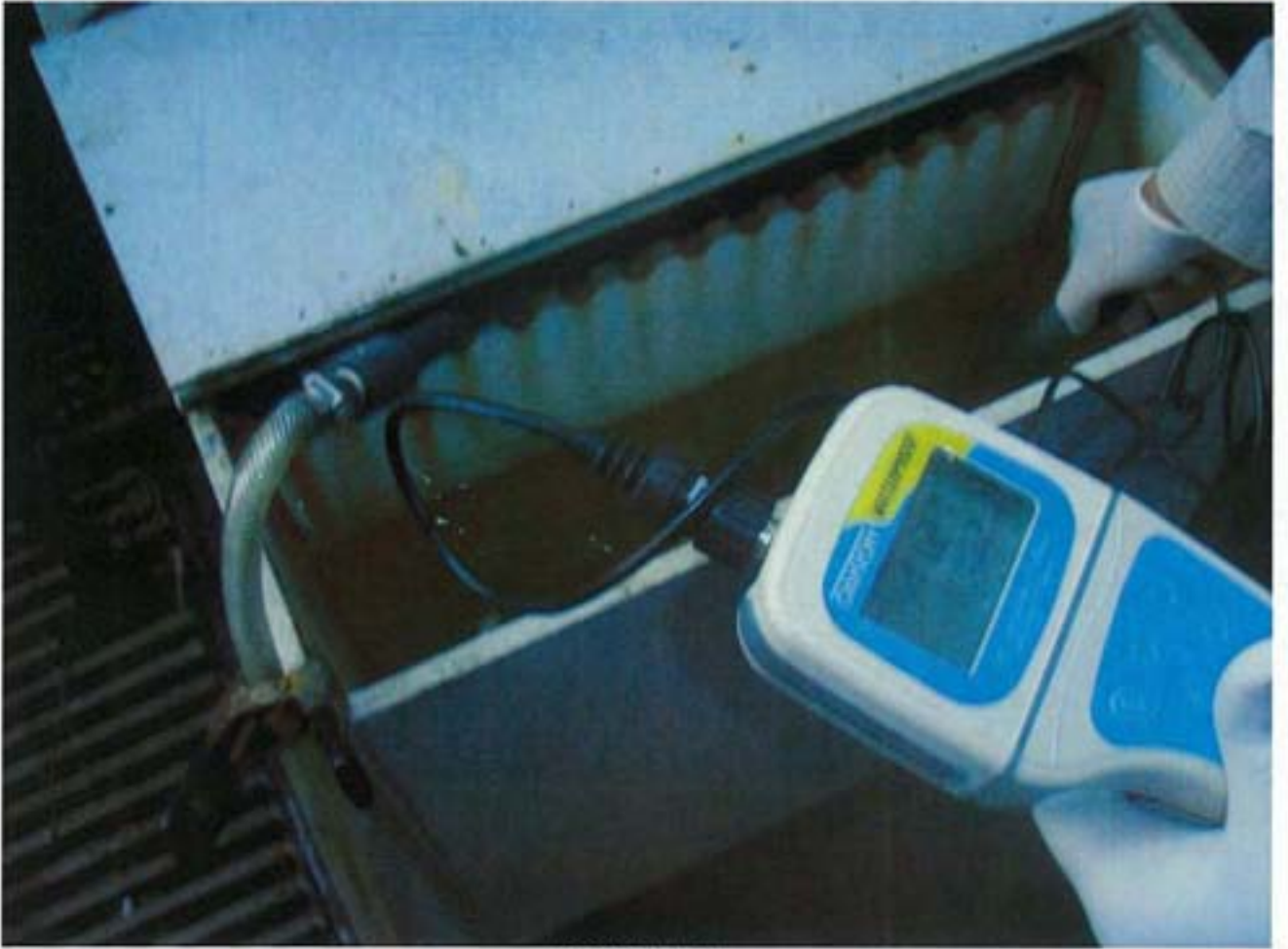
PC030112



PC030113



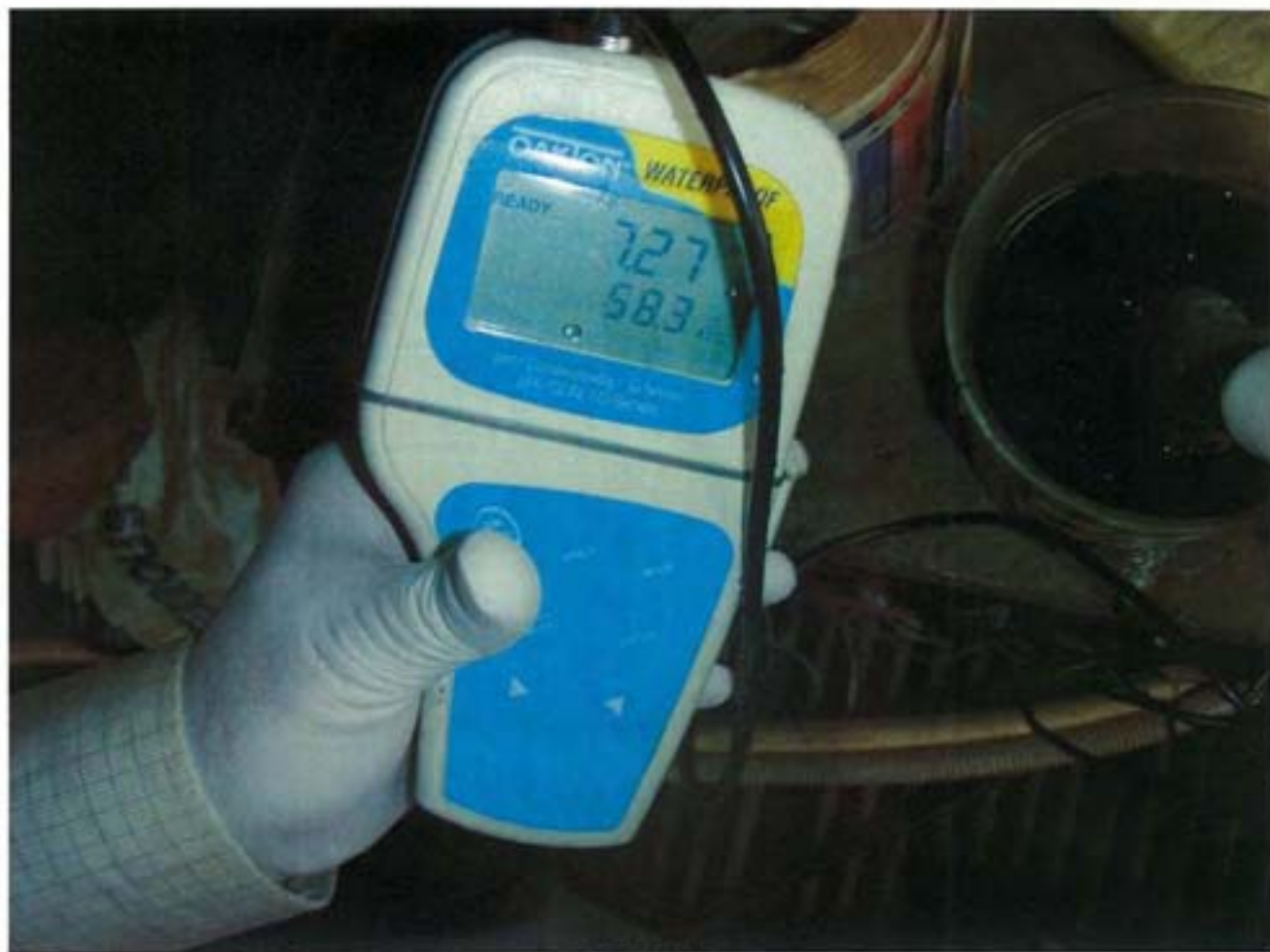
PC030114



PC030115



PC030116



PC030117



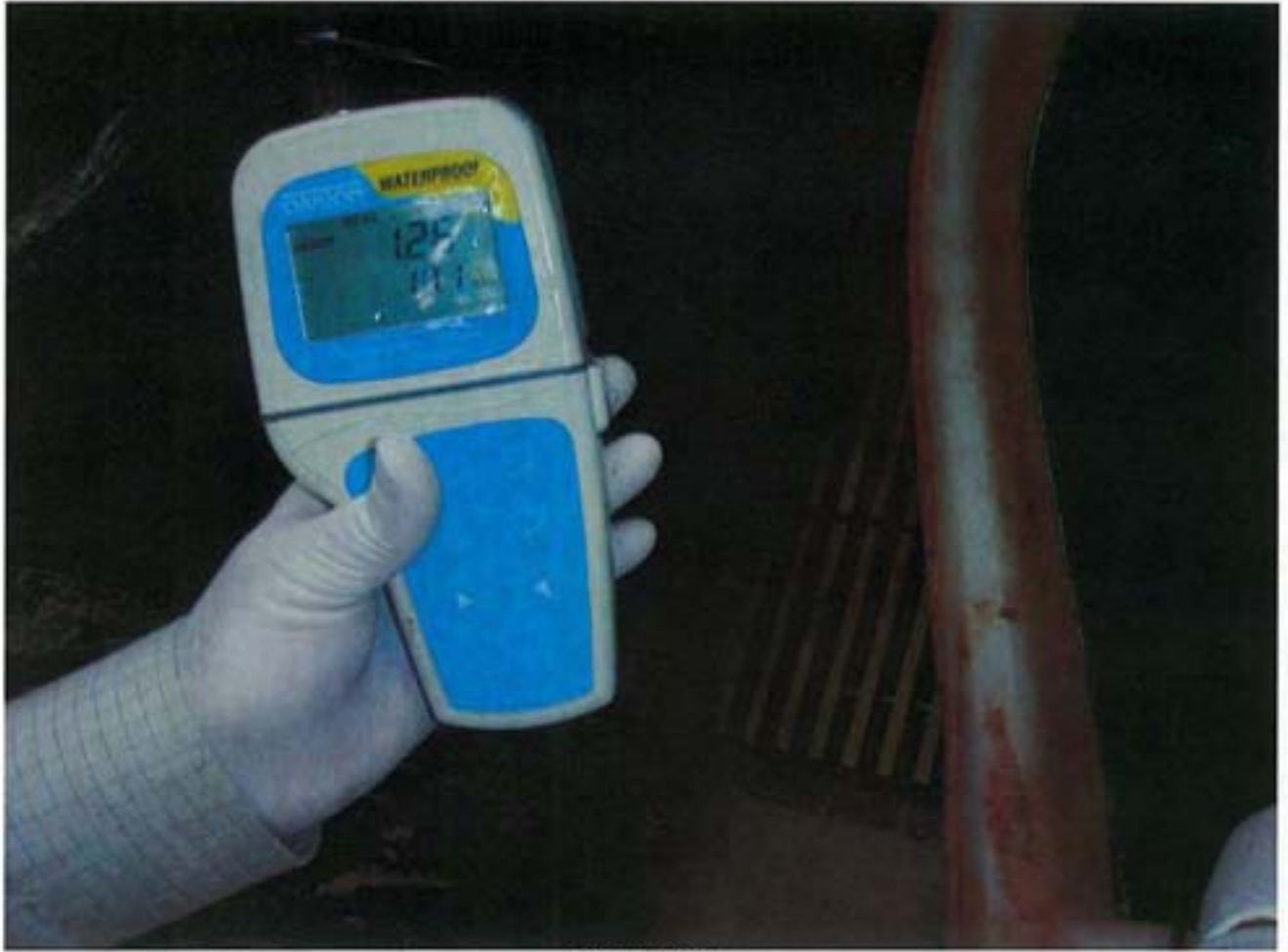
PC030118



PC030119



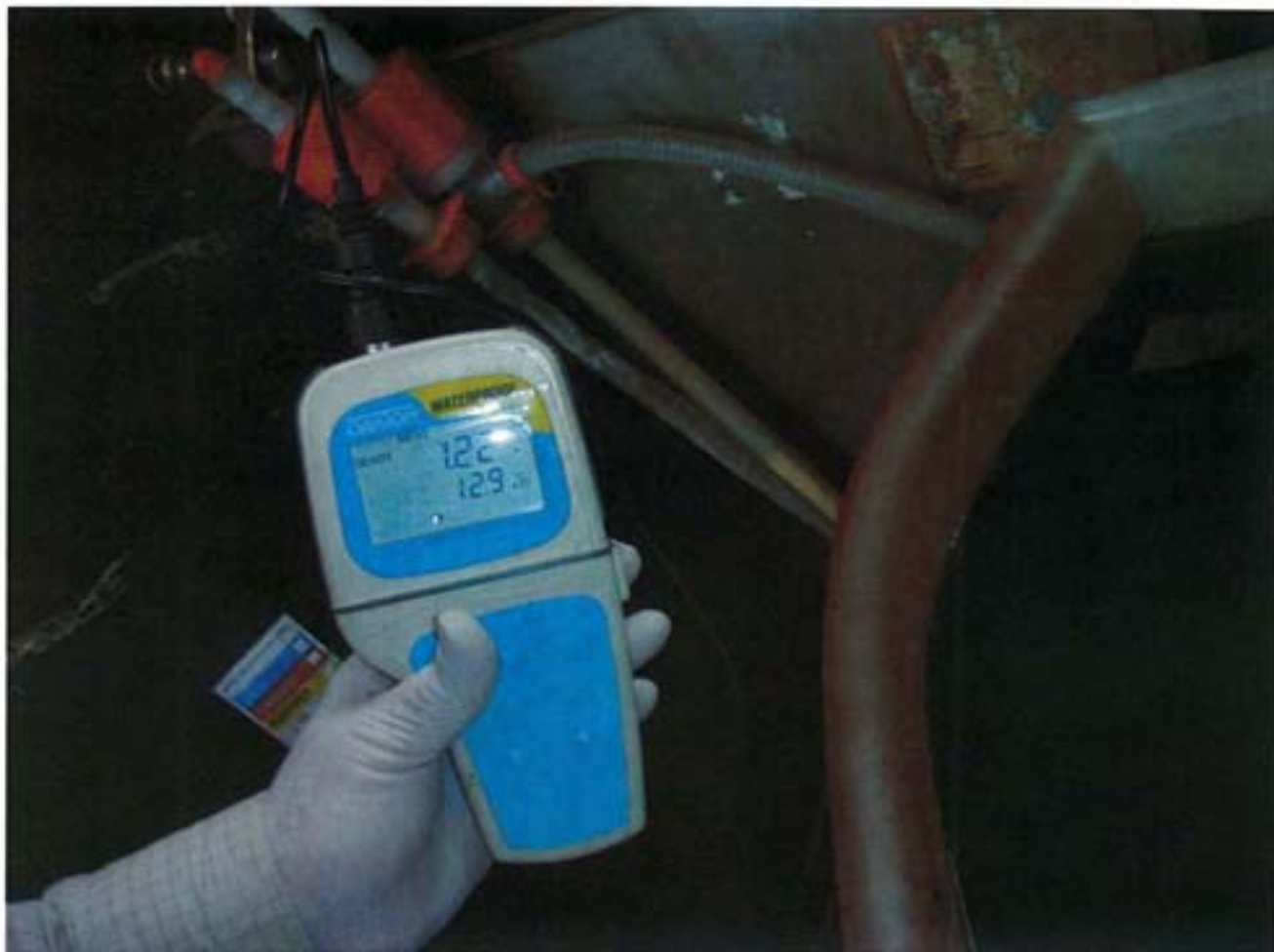
PC030120



PC030121



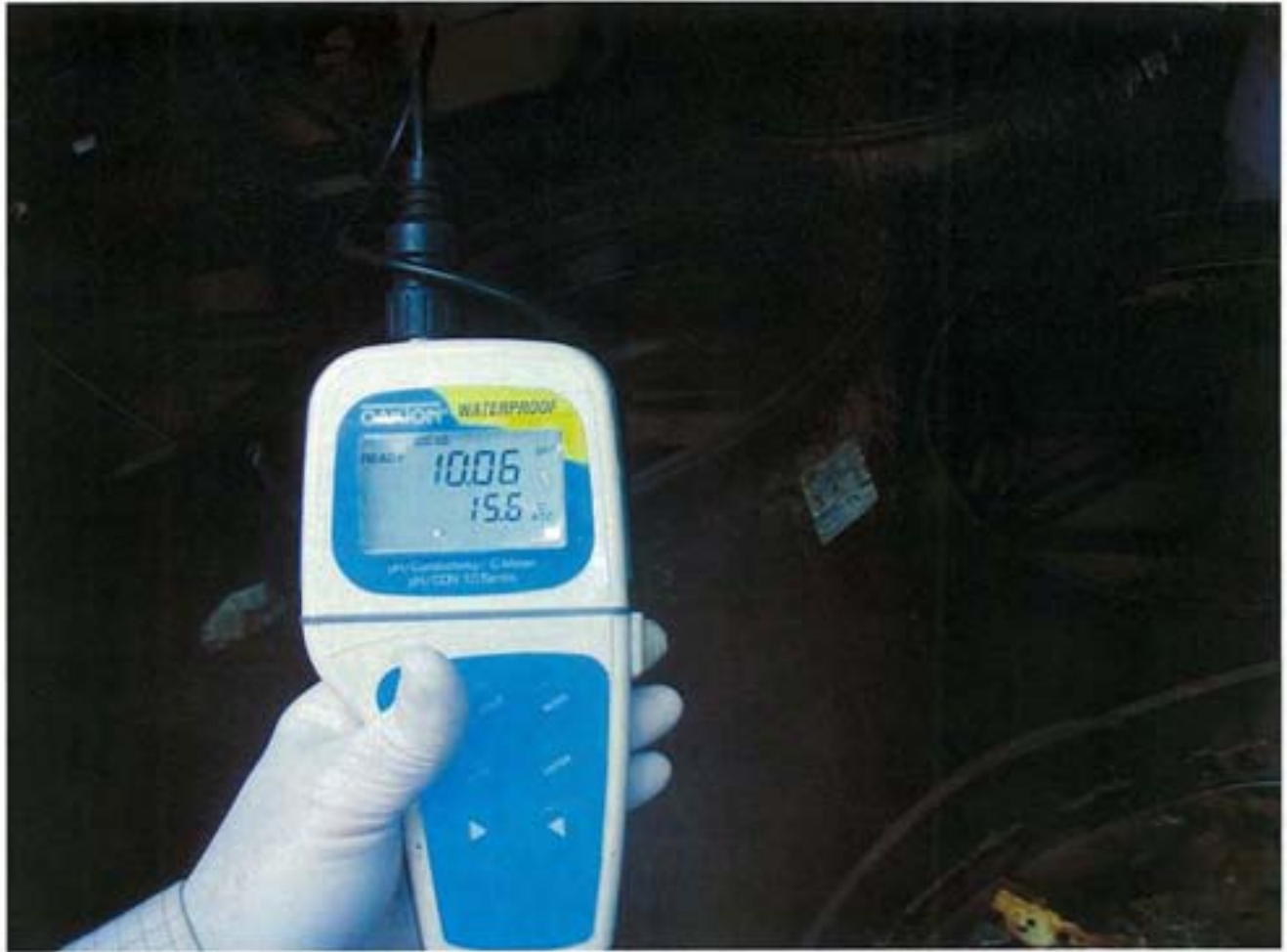
PC030122



PC030123



PC030124



PC030125



PC030126

Attachment 4

Excerpt from 2007 Tank Certification Report supplied by Electrochem Solutions, LLC on January 18, 2011

Datalab

Main Area Containment

The containment assessment determined the following:

1. The liner that underlies the containers is free of cracks or gaps and is sufficiently impervious to contain leaks, spills, and accumulated precipitation until the collected material is detected and removed.
2. The base is appropriately sloped or the containment system is otherwise designed and operated to drain and remove liquids resulting from leaks, spills, or precipitation, unless the containers are elevated or are otherwise protected from contact with accumulated liquids.
3. The containment system has sufficient capacity to contain precipitation from at least a 24 hour, 25-year storm plus 10% of the aggregate volume of all containers or the volume of the largest container, whichever is greater. The system is not exposed to storms.
4. Run-on into the containment system is prevented or the collection system has sufficient excess capacity in addition to that required in (3) to contain any run on which might enter the system. The system is not exposed to run-on.
5. Procedures are documented and in force for the timely removal of spilled or leaked waste and accumulated precipitation as is necessary to prevent overflow of the collection system.

Comments

The Main Area floor is constructed of concrete, coated with epoxy and covered with a 1/8 inch polypropylene liner with sections heat fused together. The containment area was visually inspected and appeared to be free of cracks, gaps and in good condition. The containment tanks were visually inspected from the grated floor level approximately 5 1/2 feet above the containment floor and it appeared to be free of cracks, gaps and in good condition.

The containment system appeared to be installed and operated correctly.

The Main Area Containment is approximately 12' by 50' and 5 1/2' deep. The Main Area is connected with the Plating Area Containment which is 46' by 59' and is also located about 5' feet below the grated surface. Waste holding tanks, chemical storage tanks and plating tank ventilation are located within the Plating Area Containment. The total capacity of the grated area and tanks is approximately 126,636 gallons. The largest tank in the Containment Area is approximately 1,201 gallons. The total capacity of the tanks in this area is 47,052 gallons. The area must contain 10% of this total, 4,705 gallons, or the volume of the largest tank, whichever is greater. The area provides the required capacity. All tanks appeared to be surrounded by the liner. There is no storm water or run-on to deal with. Leaks can be observed and addressed. All secondary equipment is contained by the liner system.

Main Storage Containment

Tank Volumes

	Storage Tanks Under Grate	Storage Tanks Above Grate	Storage Tanks in Plating Room	Process Tanks 1	Process Tanks 2
Capacity (Gallons)	6,500.00	3,500.00	3,000.00	4,484.00	29,568.00
Total Tanks	47,057.00				

Containment volume

	Main Area	Plating Area
Side 1 (Ft)	50.00	50.00
Side 2 (Ft)	12.00	46.00
Ht (Ft)	5.60	5.00
Volume (Cu Ft)	3,360.00	13,570.00
Gallons (7.48 gal/cu ft)	25,132.80	101,503.60
Total Containment	126,636.40	

Tank volume in containment area that must be subtracted out

	Storage Tanks Under Grate	Ventilation for Plating Tanks		
Side 1 (Ft)		50.00		
Side 2 (Ft)		3.33		
Ht (Ft)		5.00		
Volume (Cu Ft)		832.50		
Gallons (7.48 gal/cu ft)	6,500.00	6,227.10		
Total Volume Displaced	12,727.10			
Total Gross Containment	126,636.40			
Minuses	12,727.10			
Net	113,909.30			
10% rule		4,705.20		
Largest tank		1,000.00		
Net Containment Requirement		4,705.20		
Percent Capacity		2421%	>100% ?	TRUE

Area has sufficient capacity

Tanks in Treatment Area

Name	Area	Nominal Capacity (Gallons)
Precipitator	Treatment Area	500
Sludge Press	Treatment Area	4 cubic feet
Sludge Press Effluent	Treatment Area	400
Waste Nitric	Treatment Area	1000
Waste HCl	Treatment Area	1000
Evaporator 1	Treatment Area	500
Evaporator 2	Treatment Area	500
Evaporator 3	Treatment Area	500
Evaporator 4	Treatment Area	500
Portable Holding Tank	Treatment Area	500
Total		5,400

Capacity

Tanks	400	400	400
Total	1,200		

Total Gross Containment 1,200.00
 Minuses 0.00
 Net 1,200.00

10% rule 540.00
 Largest tank 1,000.00
 Net Containment Requirement 540.00
 Percent Capacity 120% >100% ? TRUE

Area has sufficient capacity

Datalab

Treatment Area Containment

The containment assessment determined the following:

1. The liner that underlies the containers is free of cracks or gaps and is sufficiently impervious to contain leaks, spills, and accumulated precipitation until the collected material is detected and removed.
2. The base is appropriately sloped or the containment system is otherwise designed and operated to drain and remove liquids resulting from leaks, spills, or precipitation, unless the containers are elevated or are otherwise protected from contact with accumulated liquids.
3. The containment system has sufficient capacity to contain precipitation from at least a 24-hour, 25-year storm plus 10% of the aggregate volume of all containers or the volume of the largest container, whichever is greater. The system is not exposed to storms.
4. Run on into the containment system is prevented or the collection system has sufficient excess capacity in addition to that required in (3) to contain any run on which might enter the system. The system is not exposed to run-on.
5. Procedures are documented and in force for the timely removal of spilled or leaked waste and accumulated precipitation as is necessary to prevent overflow of the collection system.

Comments

The Treatment Area floor is constructed of concrete, coated with epoxy and covered with a 1/8 inch polypropylene liner with sections heat fused together. The room has a grate situated at the east end of the room through which any liquid drains through into one of three holding tanks in the Main Containment Area. The containment area was visually inspected and appeared to be free of cracks, gaps and in good condition. The containment tanks were visually inspected from the grated floor level approximately 5 1/2 feet above the containment floor and it appeared to be free of cracks, gaps and in good condition.

The containment system appeared to be installed and operated correctly.

The grate is approximately 10' by 2 1/2'. This drains into one of three holding tanks, each with a capacity of 400 gallons. The total capacity of the grated area and tanks is 1,249 gallons. The largest tank in the Treatment Area is 1,000 gallons. The total capacity of the tanks in this area is 5,400 gallons. The area must contain 10% of this total, 540 gallons, or the volume of the largest contain, whichever is greater. The area provides the required capacity. All tanks appeared to be surrounded by the liner. There is no storm water or run-on to deal with. Leaks can be observed and addressed. All secondary equipment is contained by the liner system.

The assessment was of a working, in place system. It does not include a review of the coating process or hidden features. Tanks and equipment were not moved to verify the integrity of the surface beneath

Datalab

them. Due to the nature of hazardous materials, hazardous wastes and the limited nature of this assessment, the containment system must be monitored and maintained on a routine basis.

Calculation sheets are attached

Tanks in Treatment Area

Name	Area	Nominal Capacity (Gallons)
Precipitator	Treatment Area	500
Sludge Press	Treatment Area	4 cubic feet
Sludge Press Effluent	Treatment Area	400
Waste Nitric	Treatment Area	1000
Waste HCl	Treatment Area	1000
Evaporator 1	Treatment Area	500
Evaporator 2	Treatment Area	500
Evaporator 3	Treatment Area	500
Evaporator 4	Treatment Area	500
Portable Holding Tank	Treatment Area	500
Total		5,400

Capacity

Tanks	400	400	400
Total	1,200		

Total Gross Containment 1,200.00
 Minuses 0.00
 Net 1,200.00

10% rule 540.00
 Largest tank 1,000.00
 Net Containment Requirement 540.00
 Percent Capacity 120% >100% ? TRUE

Area has sufficient capacity

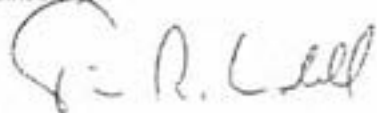
Datalab

Tank Identification	Location	Nominal Capacity (Gallons)
pH Adjustment	Below Grate	1000
Waste #1	Below Grate	400
Waste #2	Below Grate	400
Waste #3	Below Grate	400
Hydromatix Lift	Below Grate	200
Precipitator	Treatment Area	500
Sludge Press	Treatment Area	4 cubic feet
Sludge Press Effluent	Treatment Area	400
Waste Nitric	Treatment Area	1000
Waste HCl	Treatment Area	1000
Evaporator 1	Treatment Area	500
Evaporator 2	Treatment Area	500
Evaporator 3	Treatment Area	500
Evaporator 4	Treatment Area	500
Portable Holding Tank	Treatment Area	500

Individual tank assessments are attached. The following statement applies to this entire report:

"I certify under penalty of law that this document and all attachments were prepared under my direction or supervision in accordance with a system designed to assure that qualified personnel properly gather and evaluate the information submitted. Based on my inquiry of the person or persons who manage the system, or those persons directly responsible for gathering the information, the information submitted is, to the best of my knowledge and belief, true, accurate, and complete. I am aware that there are significant penalties for submitting false information, including the possibility of fine and imprisonment for knowing violations."

Sincerely,



Timothy Lundell, PE, CIH

