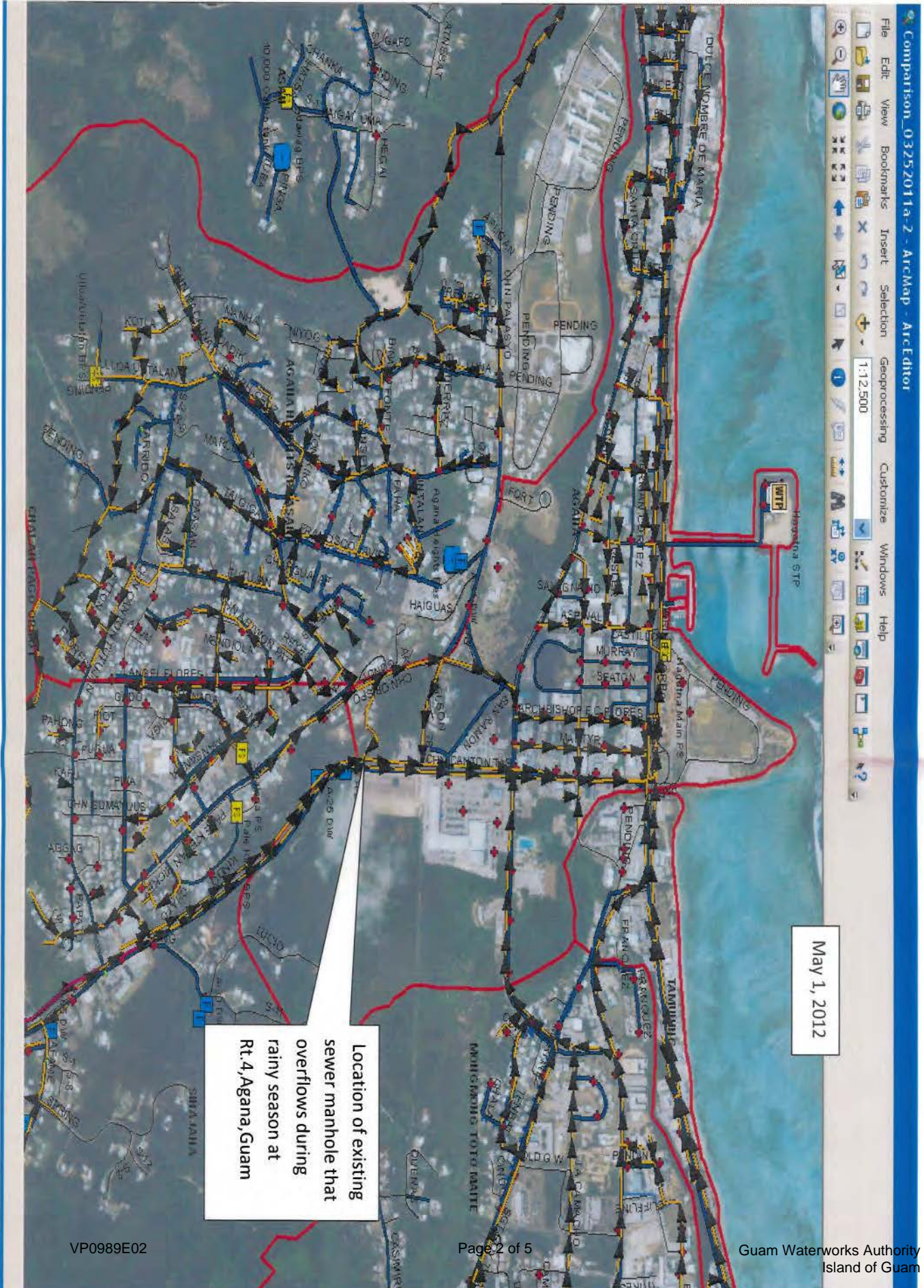


US EPA ARCHIVE DOCUMENT

GWACS-11

US EPA ARCHIVE DOCUMENT





US EPA ARCHIVE DOCUMENT





Site investigation w/ USEP/
Daren Vanleverghe, Environmental Engineer on May 1, 20
existing smh that constant
overflows during rainy seas

VP0989E02

US EPA ARCHIVE DOCUMENT

Inv

257159_36

