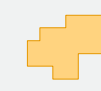






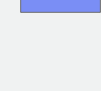
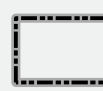




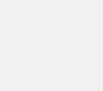
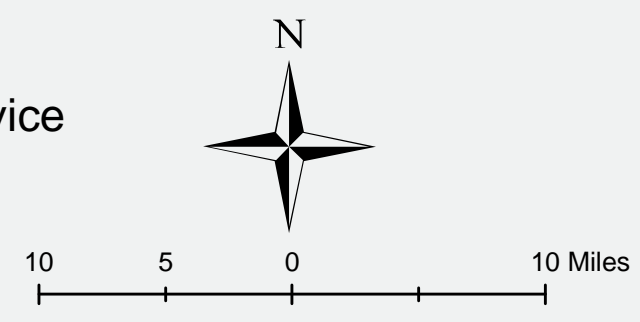


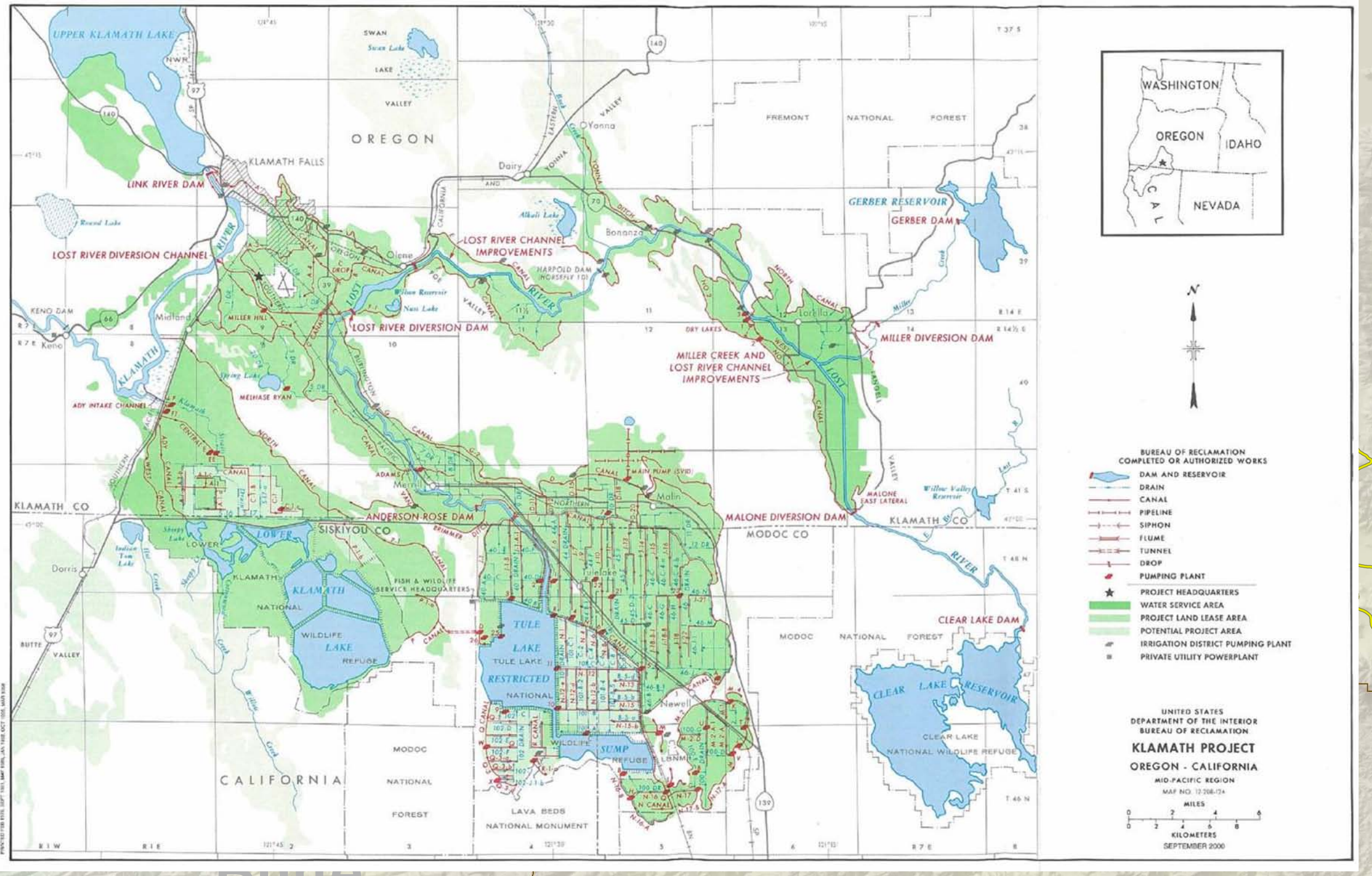
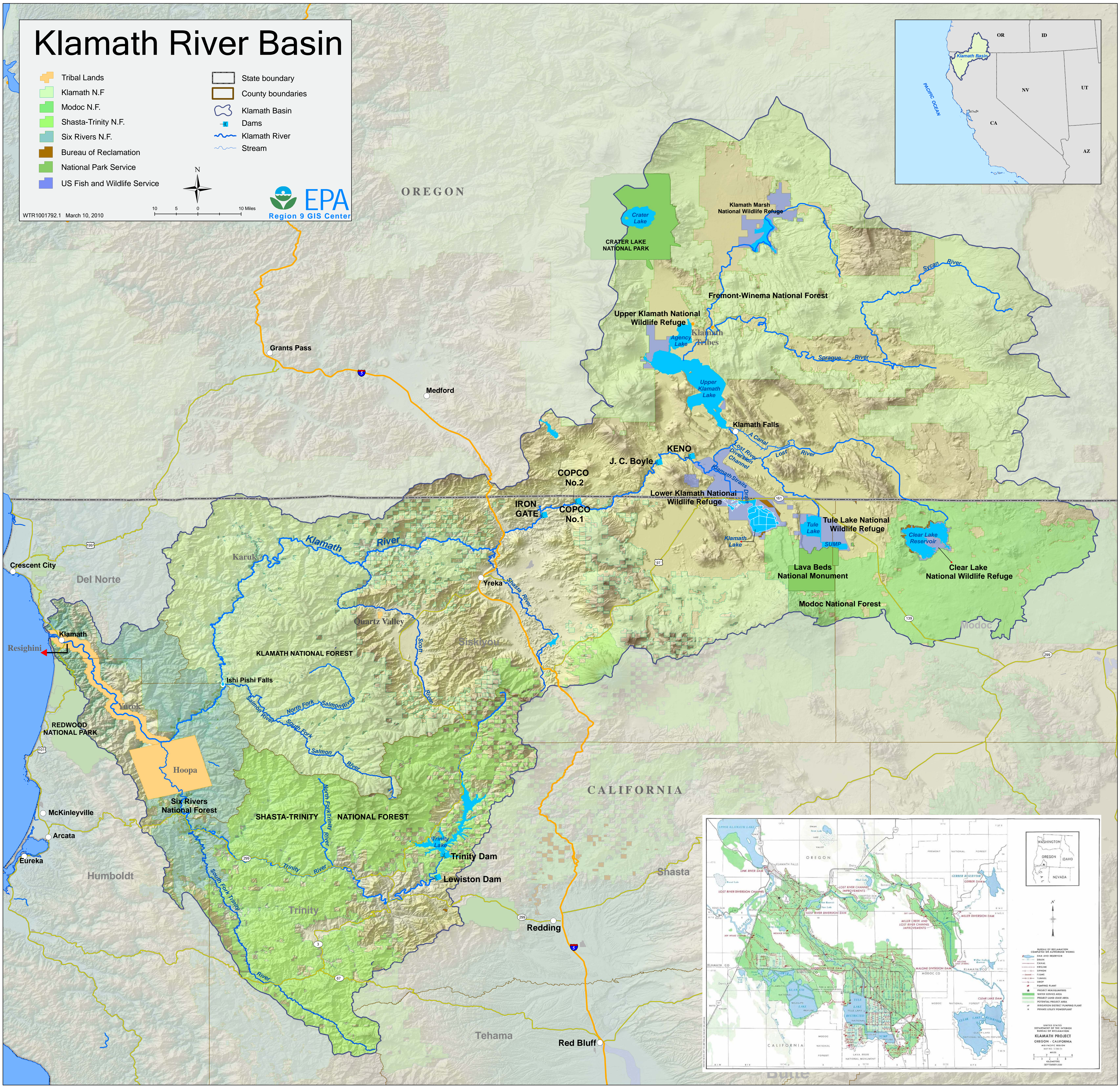
US EPA ARCHIVE DOCUMENT

Klamath River Basin

-  Tribal Lands
-  Klamath N.F.
-  Modoc N.F.
-  Shasta-Trinity N.F.
-  Six Rivers N.F.
-  Bureau of Reclamation
-  National Park Service
-  US Fish and Wildlife Service
-  State boundary
-  County boundaries
-  Klamath Basin
-  Dams
-  Klamath River
-  Stream



WTR1001792.1 March 10, 2010



US EPA ARCHIVE DOCUMENT