

US EPA ARCHIVE DOCUMENT

Figure 1. San Gabriel River Watershed Impaired Reaches

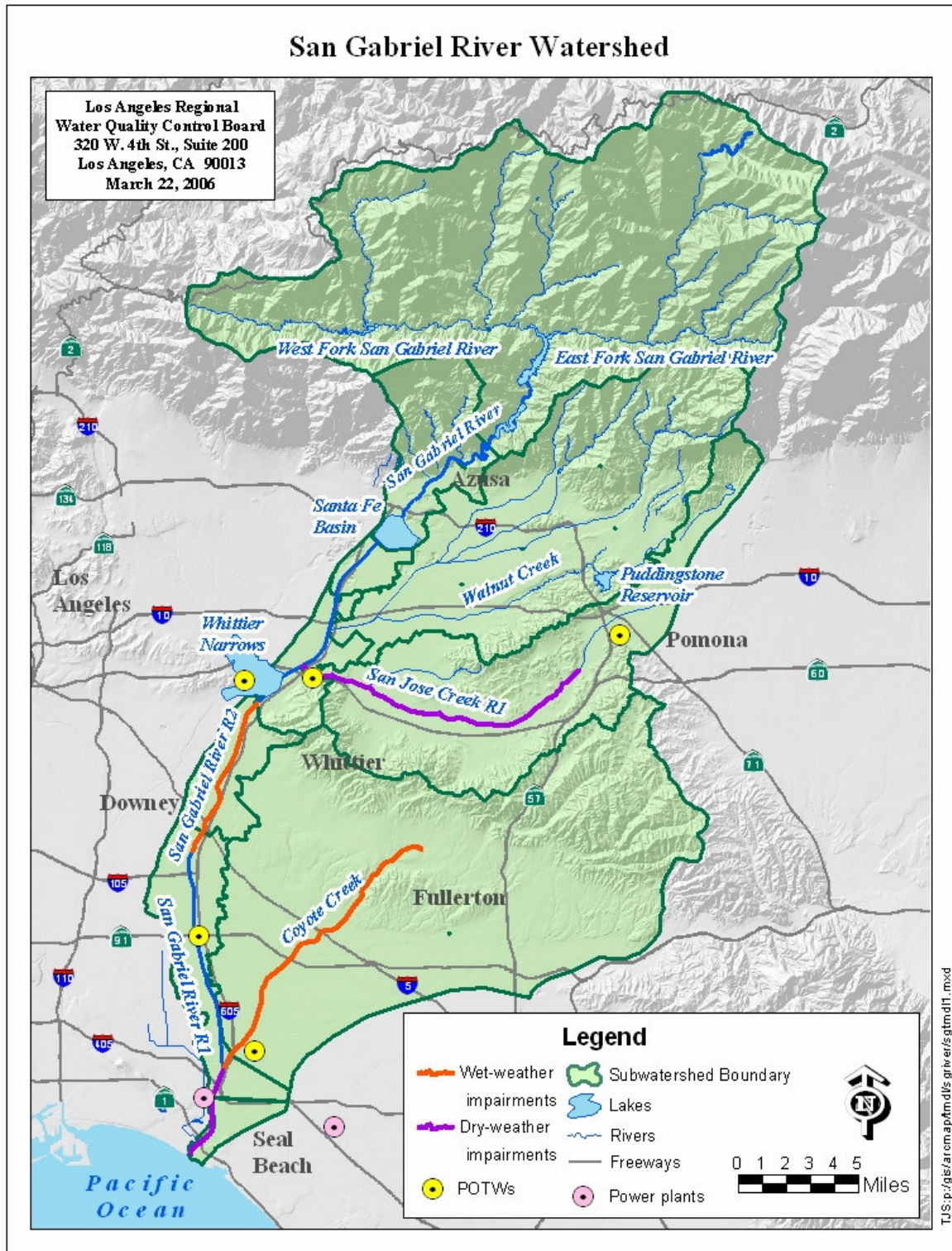


Figure 2. Land Use Distribution in the San Gabriel River Watershed

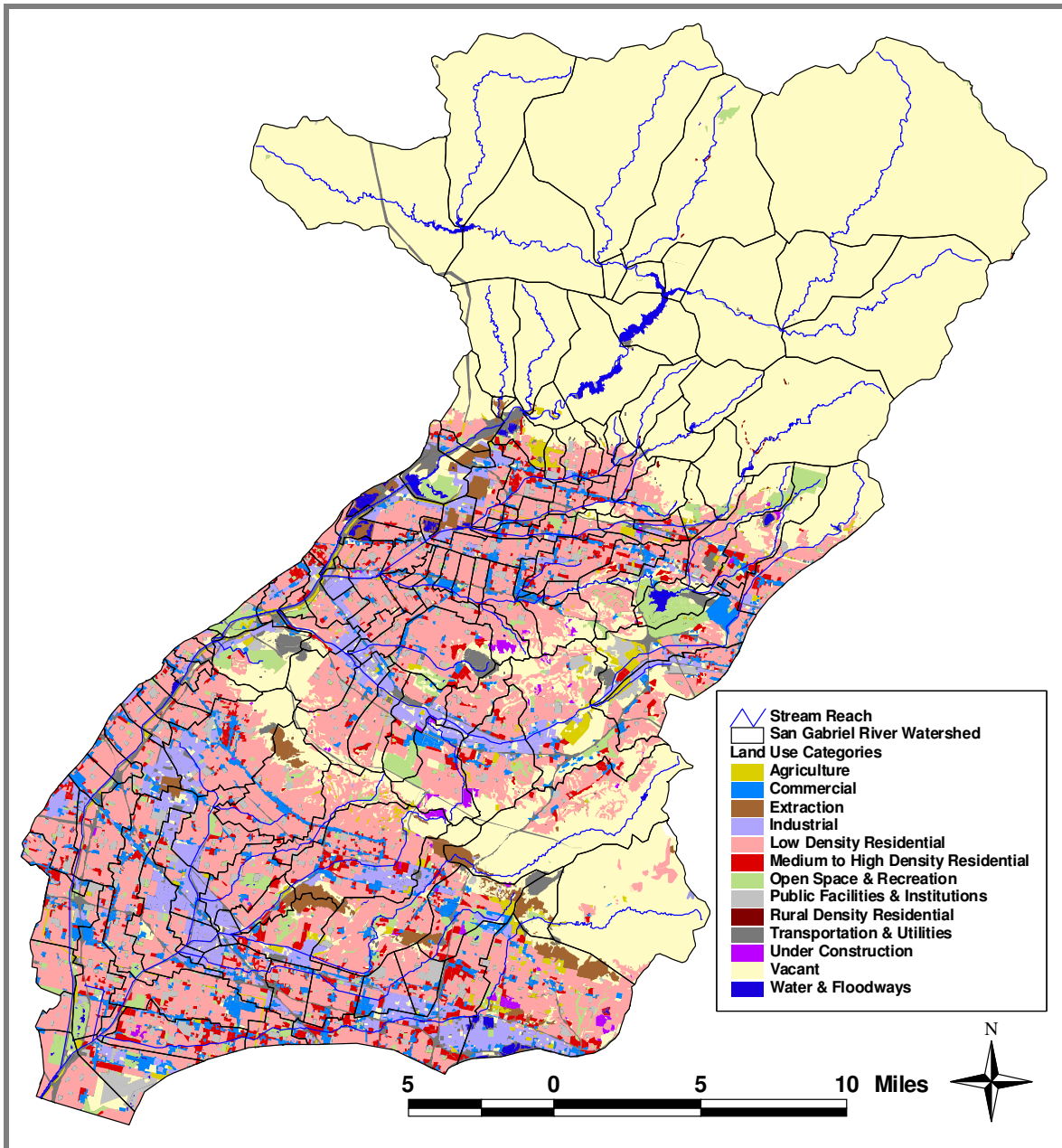




Figure 3. Flow Gauge Stations the San Gabriel River watershed

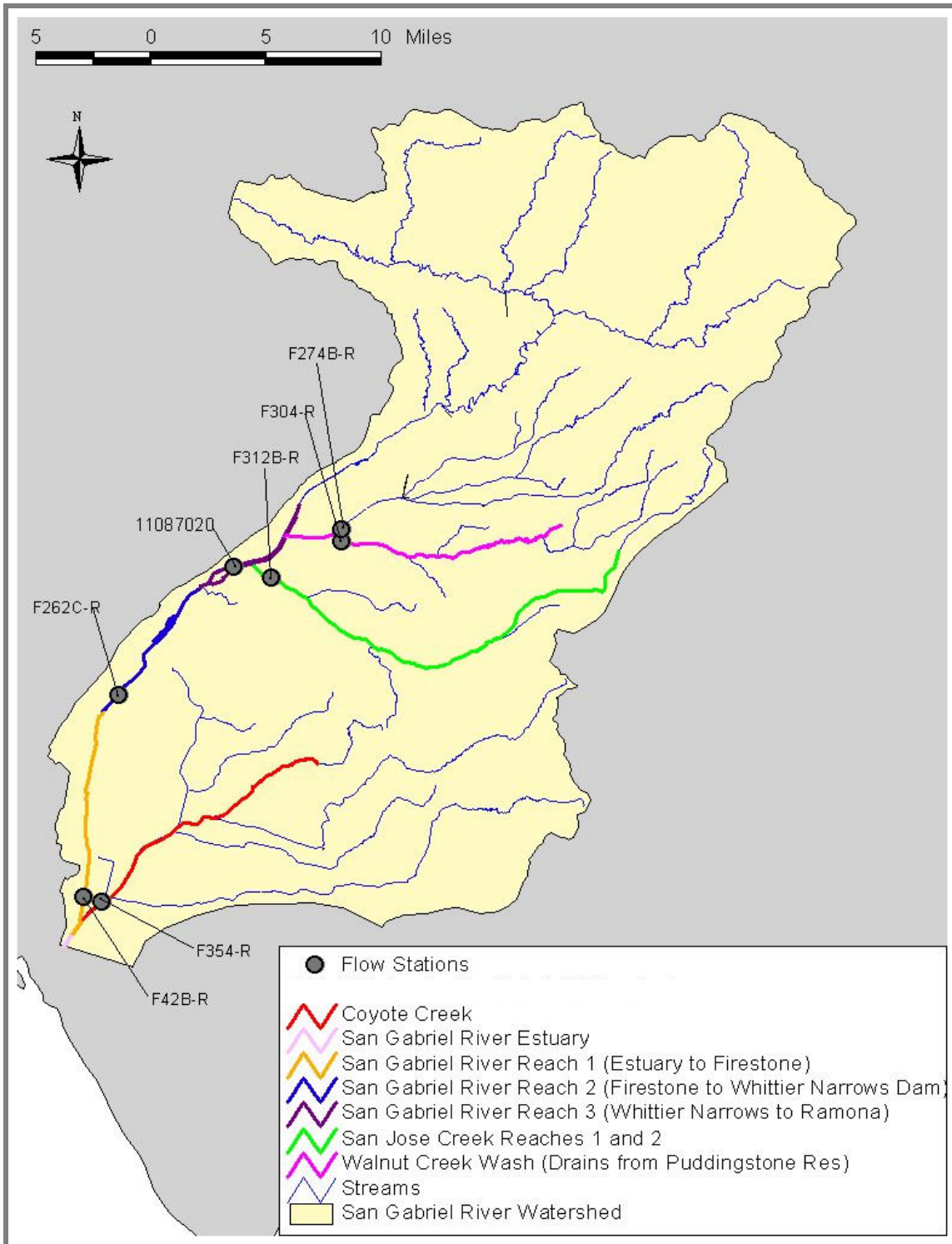


Figure 4. Flows at USGS Station 11085000 in San Gabriel River Reach 3 (1990-2005)

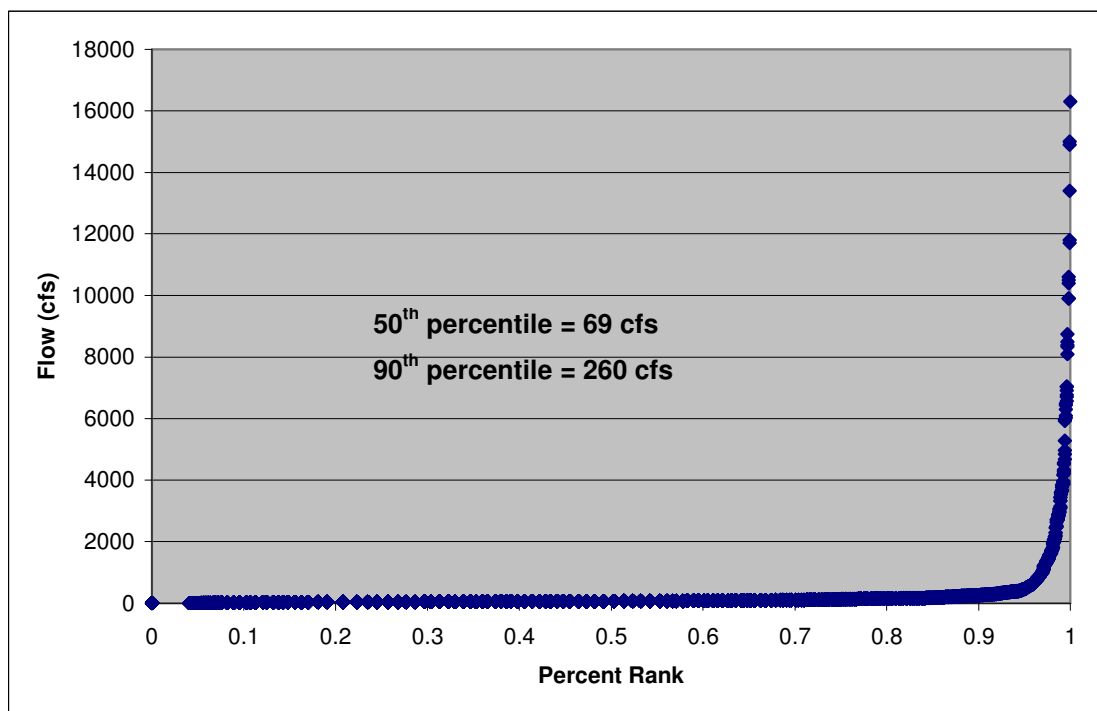
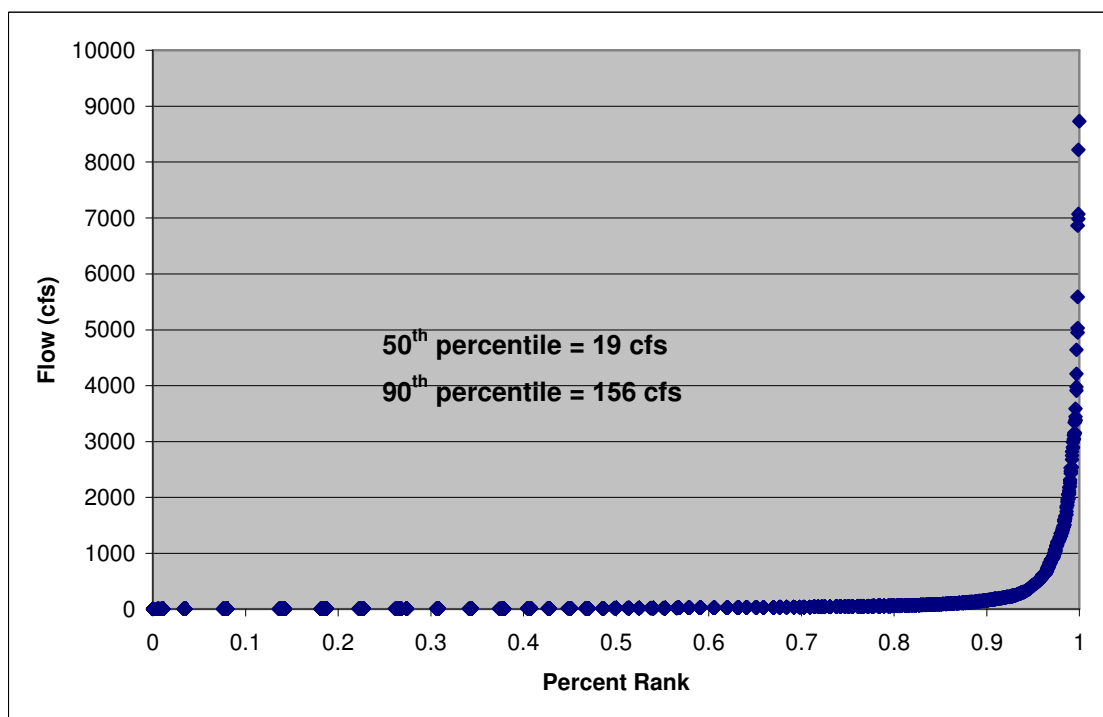


Figure 5. Flows at LACDPW Station F354-R in Coyote Creek (1990-2005)



Total Maximum Daily Loads for Metals and Selenium  
San Gabriel River and Impaired Tributaries

Figure 6. Total vs. Dissolved Lead in San Gabriel River Storm Water  
(LADPW, 1997-2005)

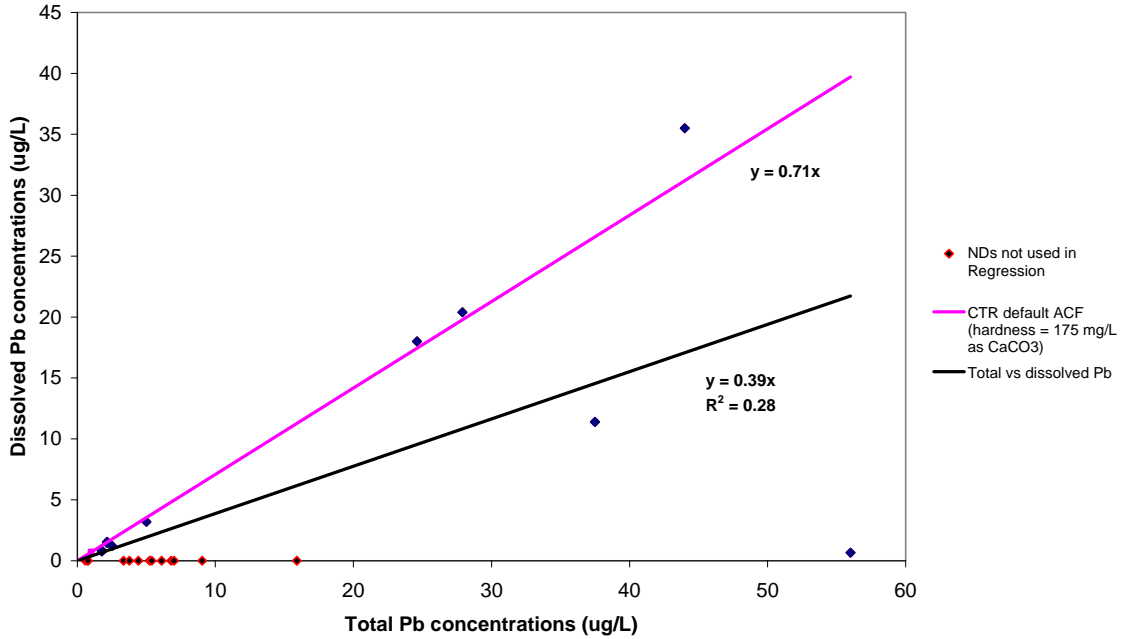
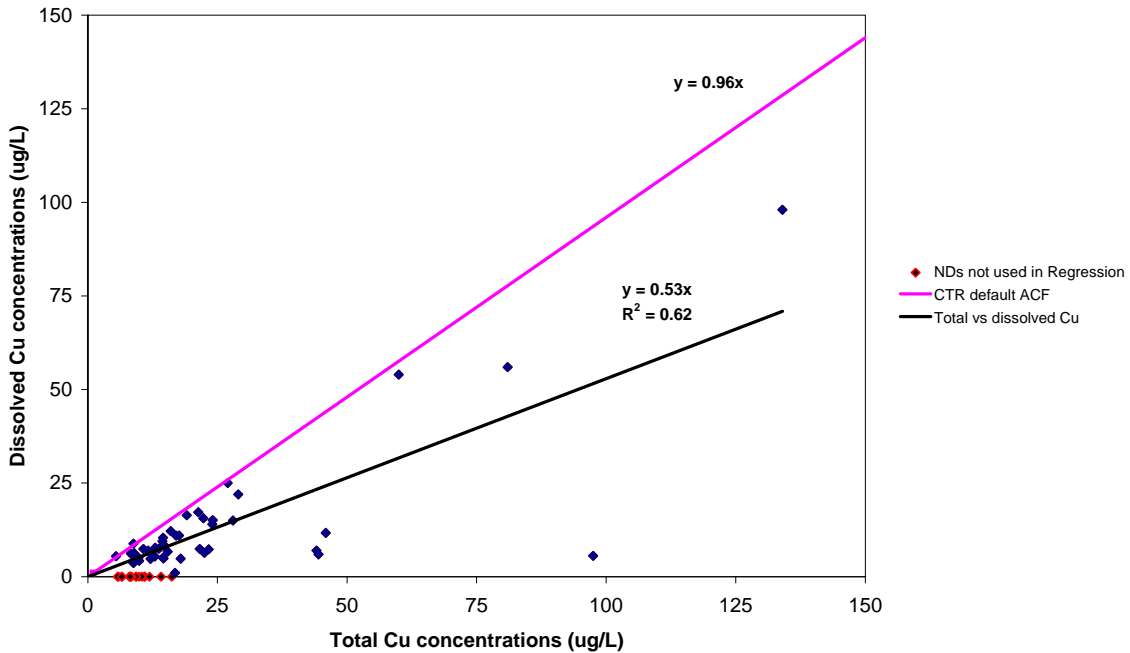


Figure 7. Total vs. Dissolved Copper in Coyote Creek Storm Water  
(LADPW, 1997-2005)



Total Maximum Daily Loads for Metals and Selenium  
San Gabriel River and Impaired Tributaries

Figure 8. Total vs. Dissolved Lead in Coyote Creek Storm Water  
(LADPW 1997-2005)

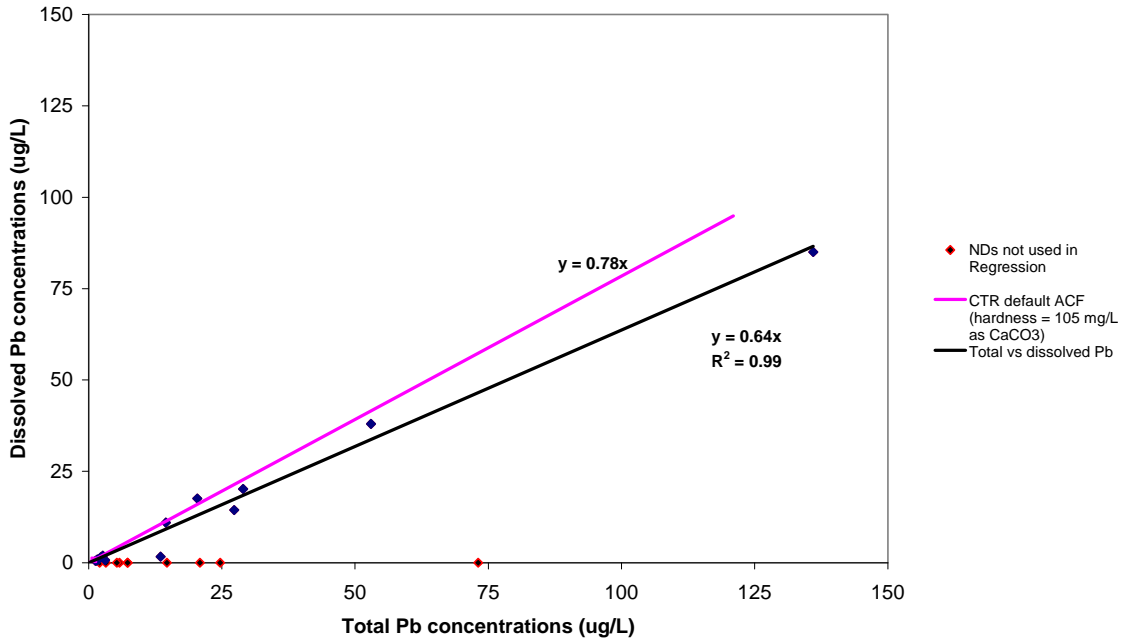


Figure 9. Total vs. Dissolved Zinc in Coyote Creek Storm Water  
(LADPW, 1997-2005)

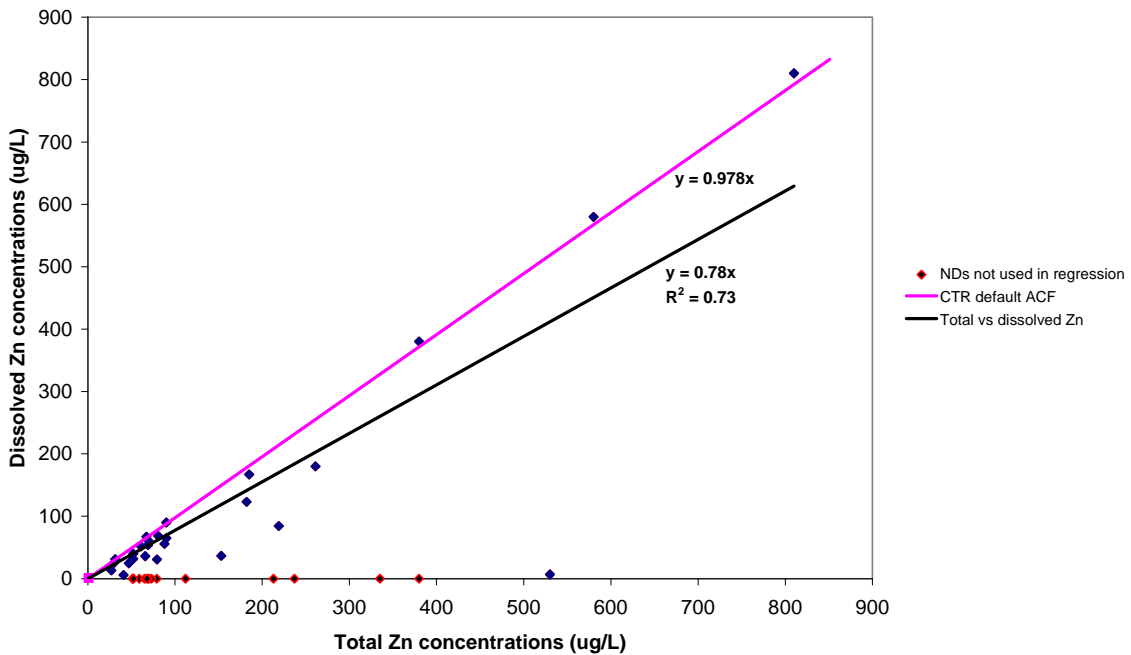


Figure 10. Subwatershed Delineation for the San Gabriel River Watershed

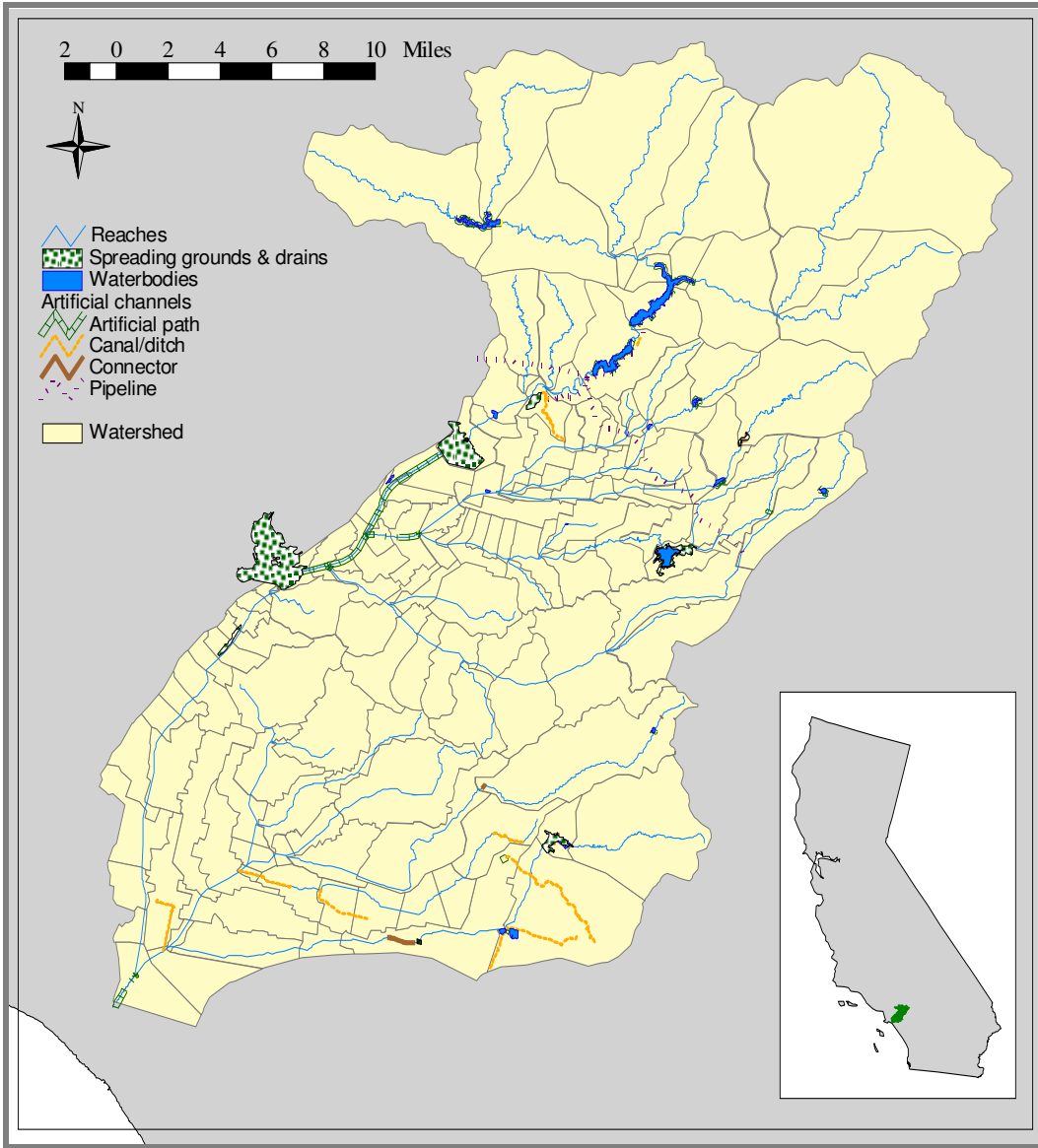
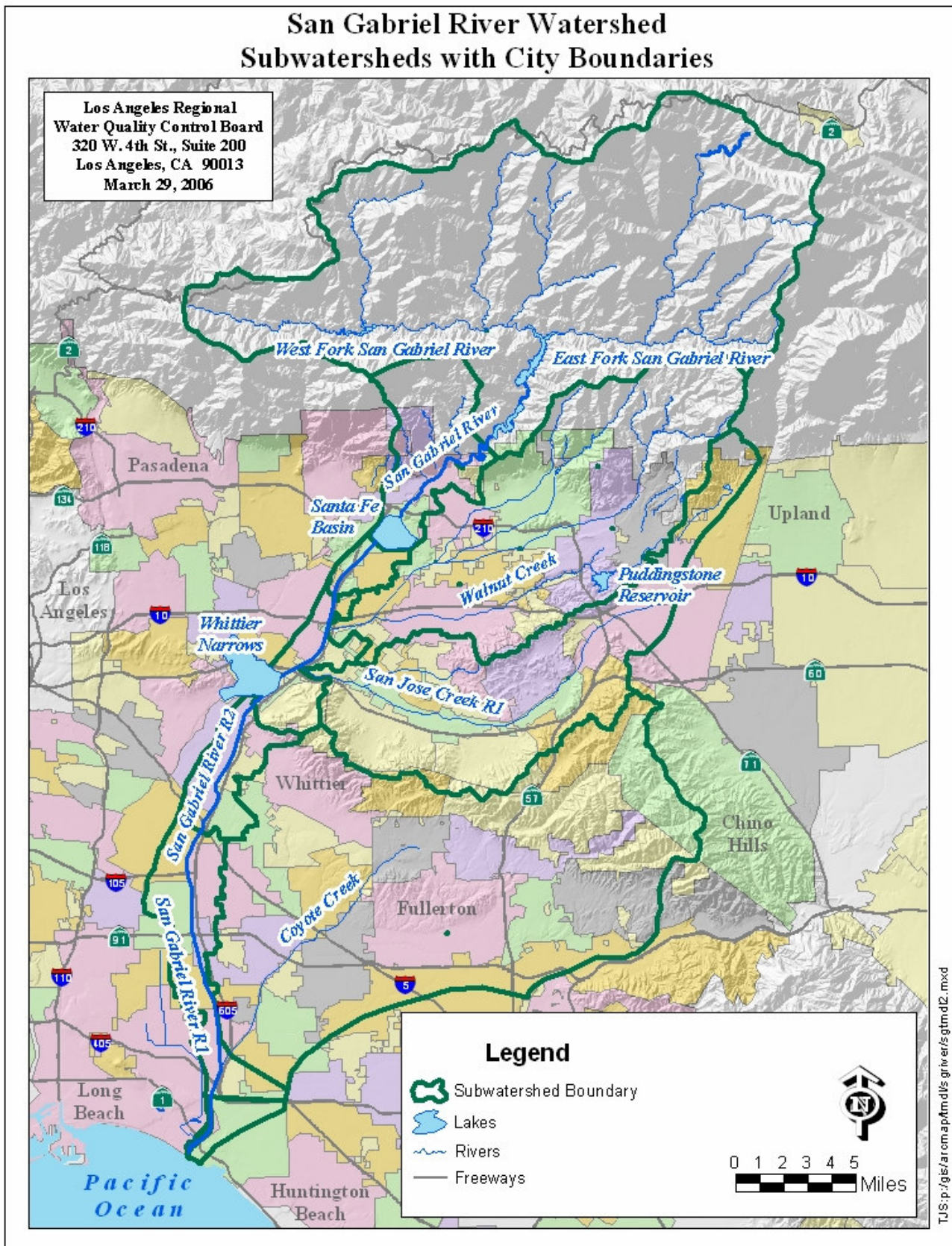


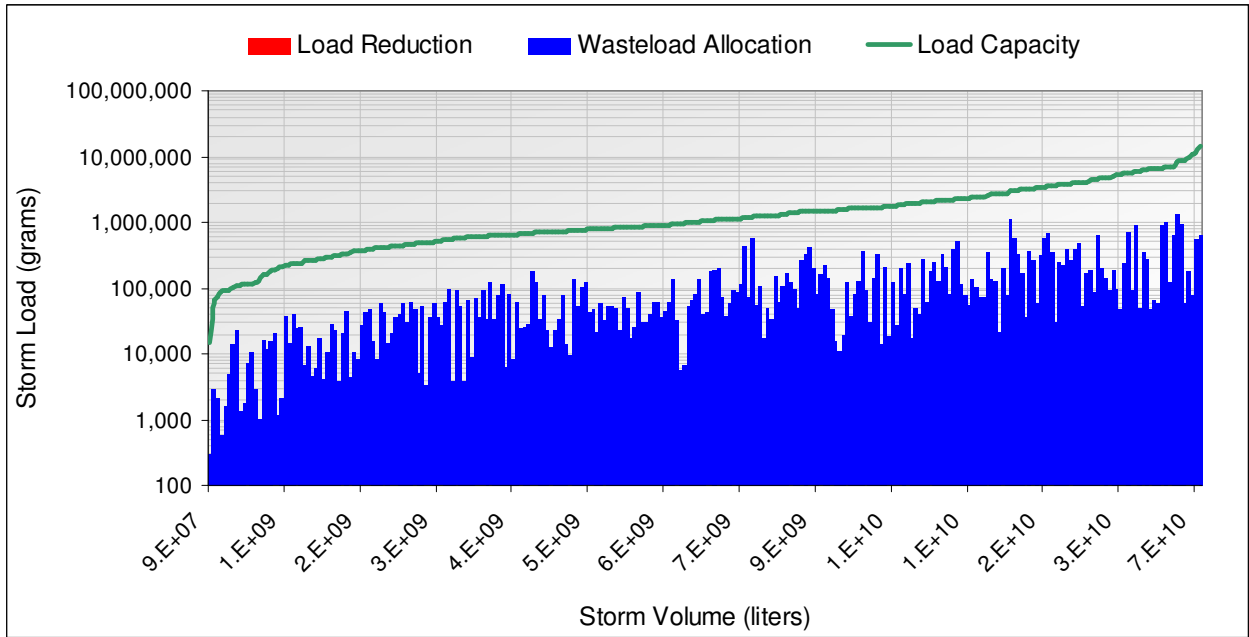




Figure 12. Municipalities Located in the San Gabriel River Watershed



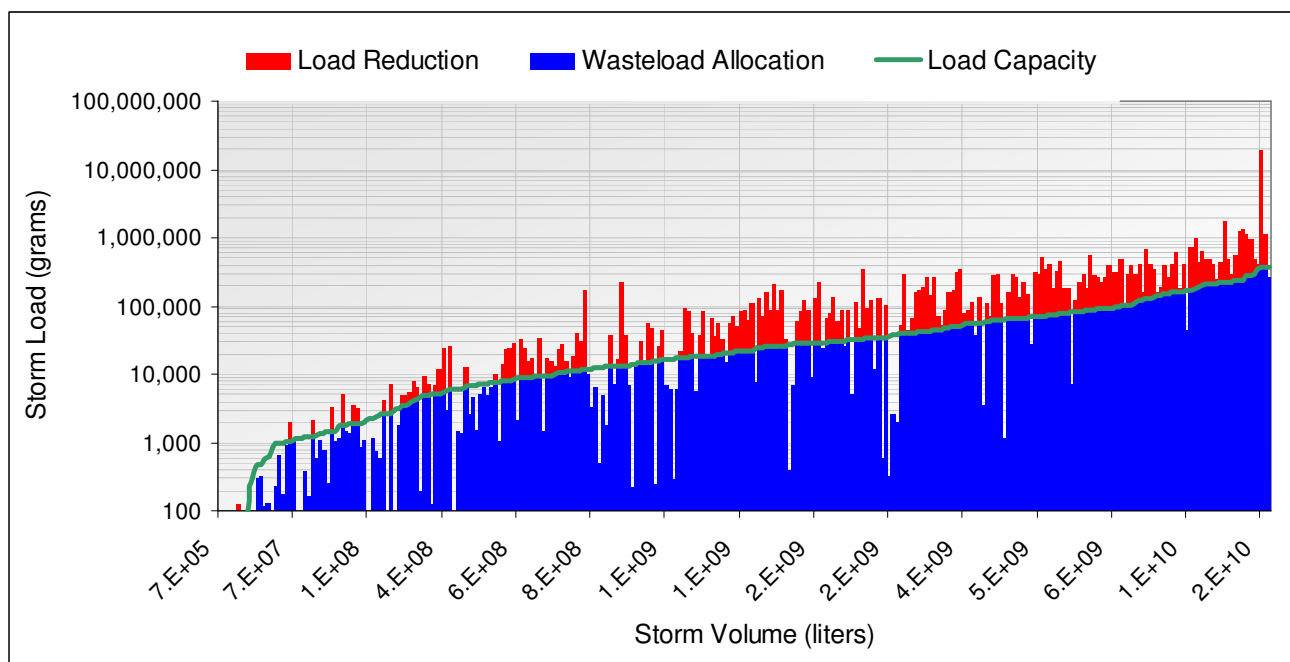
**Figure 13.a. Estimated Lead Reductions to Meet Wet-Weather Grouped Storm Water Waste Load Allocations for San Gabriel River Reach 2 and Upstream Reaches and Tributaries.**



Computed Load Indicators:	Value	Units
Total Storms Over 12-Year Period	262	none
Total Below Load Capacity Curve:	485,461	kg
Existing Condition (Red and Blue)	34,453	kg
Existing Load Below Load Capacity Curve (Blue):	34,453	kg
Existing Load Above Load Capacity Curve (Red):	0	kg
TMDL Wasteload Reduction:	0.0%	none



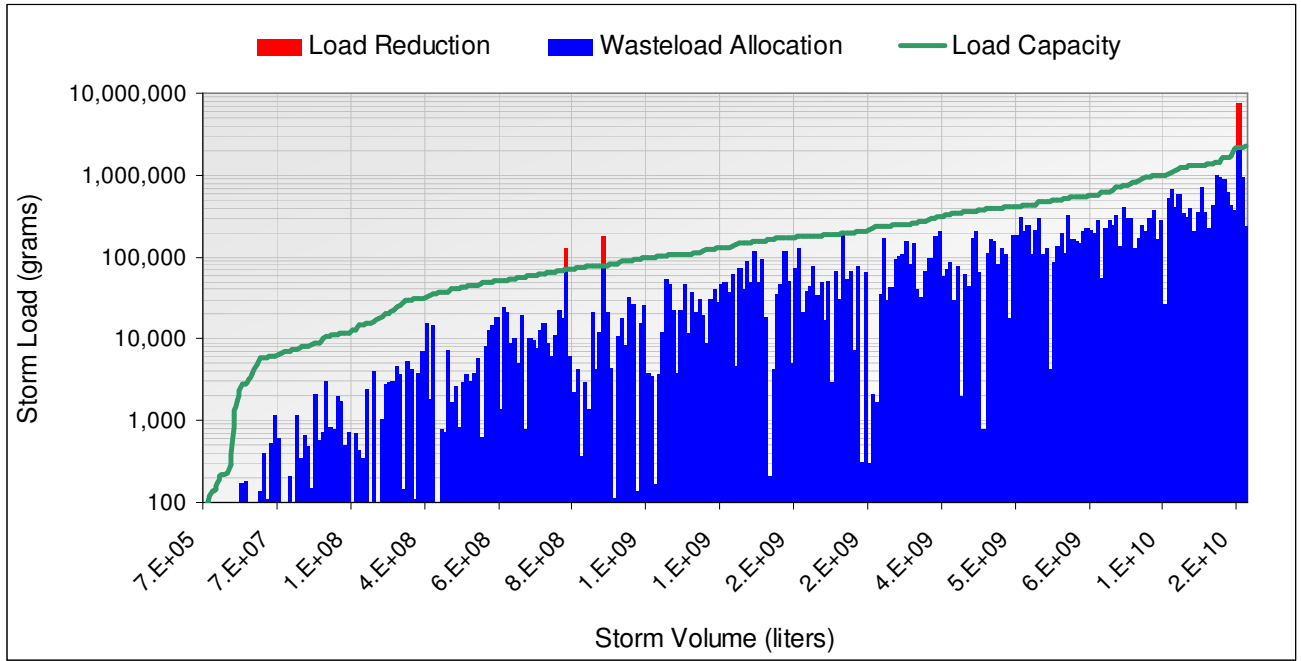
**Figure 13b. Estimated Copper Reductions to Meet Wet-Weather Grouped Storm Water Waste Load Allocations for Coyote Creek and Tributaries.**



<b>Computed Load Indicators:</b>	<b>Value</b>	<b>Units</b>
Total Storms Over 12-Year Period	283	none
Total Below Load Capacity Curve:	14,173	kg
<b>Existing Condition (Red and Blue)</b>	<b>58,304</b>	kg
Existing Load Below Load Capacity Curve (Blue):	13,159	kg
<b>Existing Load Above Load Capacity Curve (Red):</b>	<b>45,145</b>	kg
TMDL Wasteload Reduction:	77.4%	none

Total Maximum Daily Loads for Metals and Selenium  
San Gabriel River and Impaired Tributaries

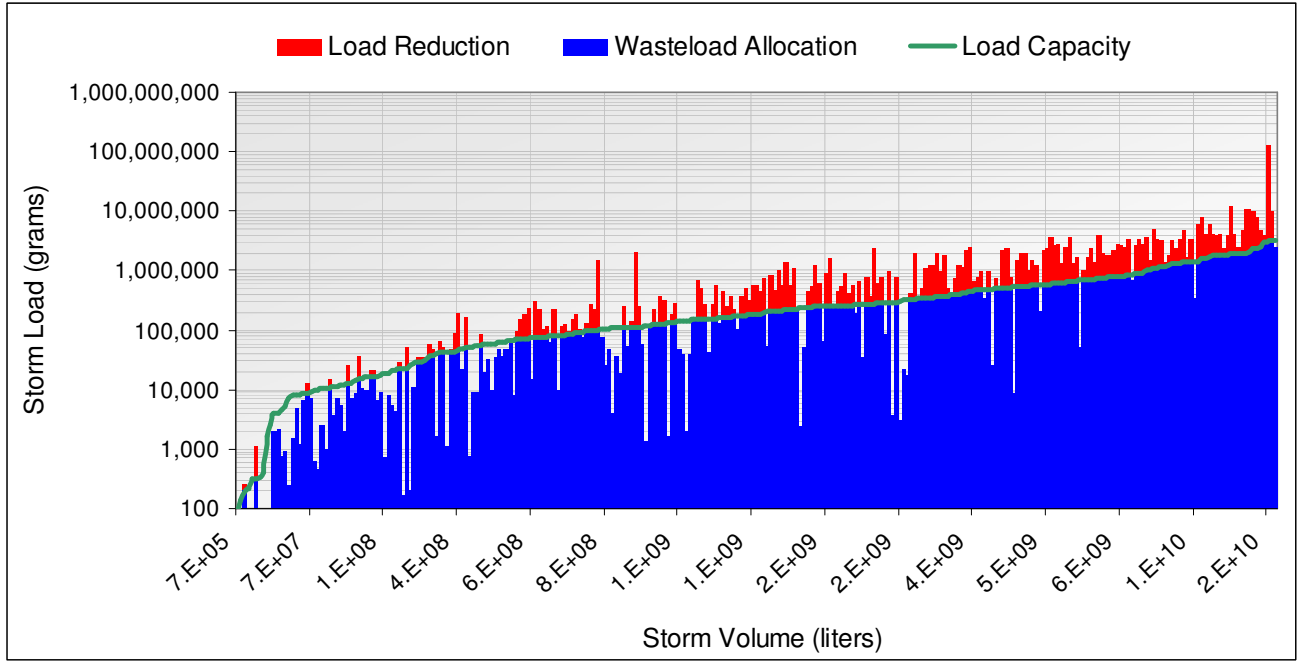
**Figure 13.c. Estimated Lead Reductions to Meet Wet-Weather Grouped Storm Water Waste Load Allocations for Coyote Creek and Tributaries.**



<b>Computed Load Indicators:</b>	<b>Value</b>	<b>Units</b>
Total Storms Over 12-Year Period	283	none
Total Below Load Capacity Curve:	84,729	kg
<b>Existing Condition (Red and Blue)</b>	<b>33,879</b>	kg
Existing Load Below Load Capacity Curve (Blue):	28,464	kg
<b>Existing Load Above Load Capacity Curve (Red):</b>	<b>5,415</b>	kg
TMDL Wasteload Reduction:	16.0%	none



**Figure 13.d. Estimated Zinc Reductions to Meet Wet-Weather Grouped Storm Water Waste Load Allocations for Coyote Creek and Tributaries.**



<b>Computed Load Indicators:</b>	<b>Value</b>	<b>Units</b>
Total Storms Over 12-Year Period	283	none
<b>Total Below Load Capacity Curve:</b>	<b>120,991</b>	<b>kg</b>
<b>Existing Condition (Red and Blue)</b>	<b>440,298</b>	<b>kg</b>
Existing Load Below Load Capacity Curve (Blue):	112,130	kg
<b>Existing Load Above Load Capacity Curve (Red):</b>	<b>328,168</b>	<b>kg</b>
TMDL Wasteload Reduction:	74.5%	none