

US EPA ARCHIVE DOCUMENT

## **Part A—Relevant Maps/Figures**

Figure 1-1. Newport Bay and surrounding watershed

Figure A-2. San Diego Creek watershed and land use data

Figure A-3. Santa Ana-Delhi Channel watershed and land use data

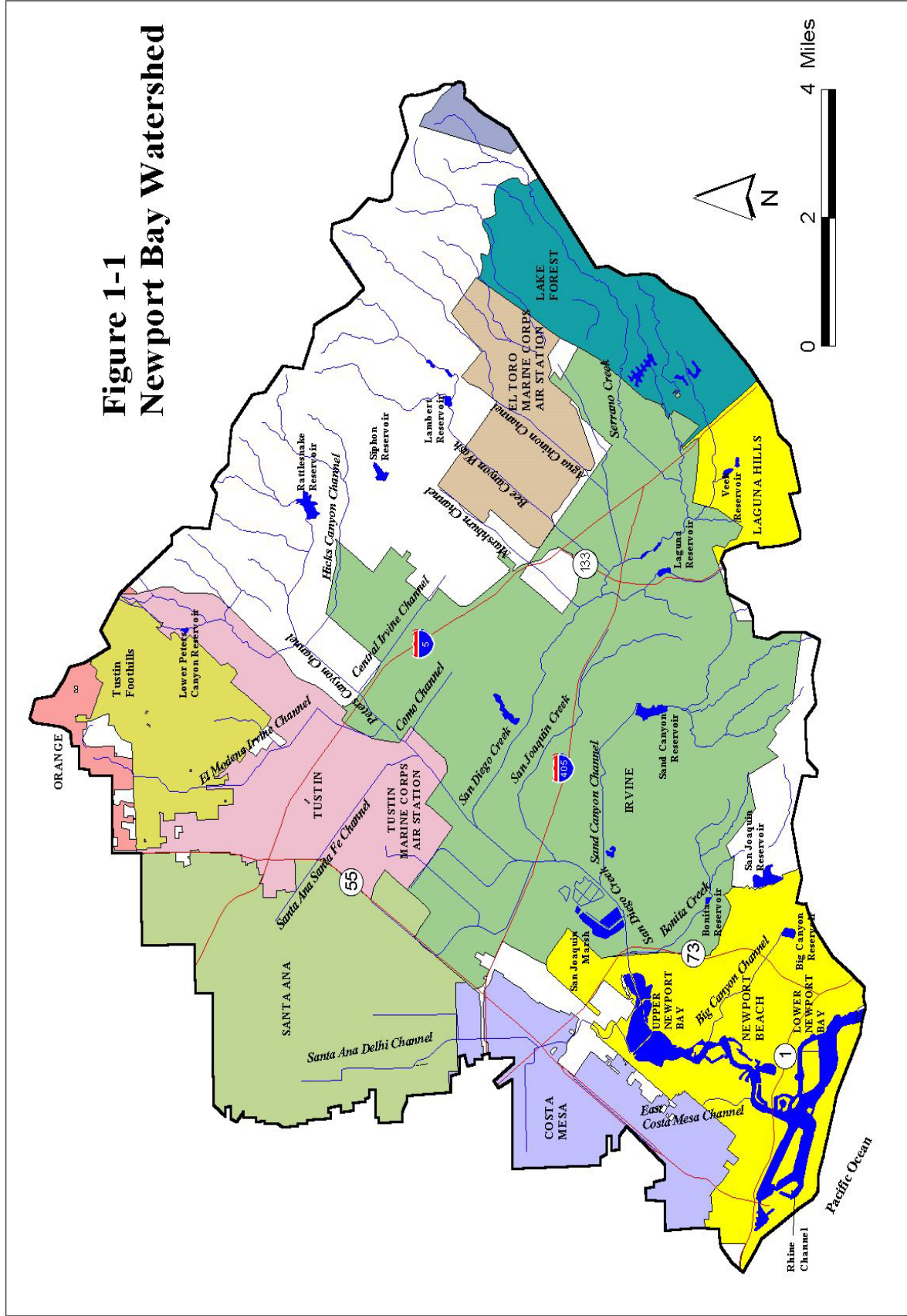
Figure A-4. Entire Newport Bay watershed and land use data

Figure A-5. Residence time for Newport Bay during neap tide

Figure A-6. Residence time for Newport Bay during spring tide.

Figure A-7. Rhine Channel storm drains and Newport Plating facility site.

Figure 1-1  
Newport Bay Watershed







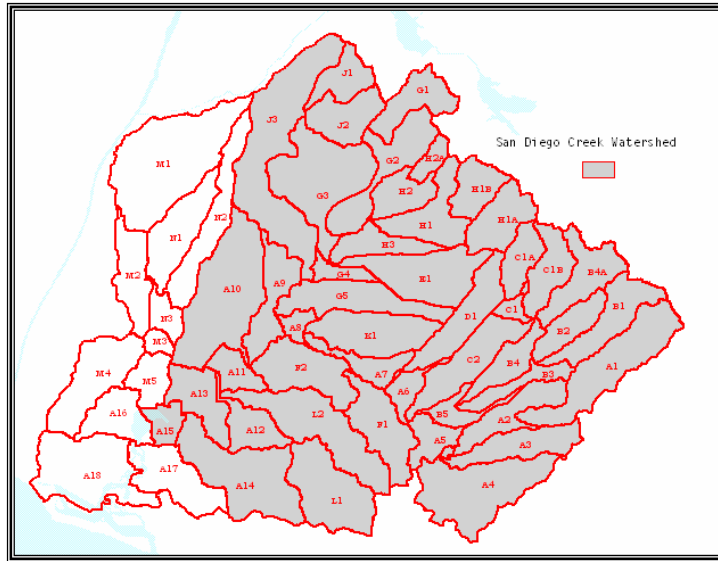


Figure A-2. San Diego Creek watershed land use data (as of January 2001).  
(Source: OCPFRD GIS Dept.)

**San Diego Creek Land Use# - Jan 2001**

Landuse	Acres	Total sq_miles	% using sq miles	% using acres
Agricultural	5091.90	7.96	6.55	6.54
Commercial	6381.47	9.97	8.20	8.20
Education and Religion	203.26	0.32	0.26	0.26
Industrial	3965.55	6.2	5.10	5.10
No Available Data	21910.06	34.23	28.15	28.16
Recreational	237.28	0.37	0.30	0.30
Residential-Income	11668.20	18.23	14.99	14.99
Trans., Comm. and Utility	1177.28	1.84	1.51	1.51
Vacant Land	15811.34	24.71	20.32	20.32
Roads*	11369.70	17.76	14.61	14.61
<b>Total watershed</b>	<b>77818.53</b>	<b>121.59</b>	<b>100.00</b>	<b>100.00</b>

#Does not include Santa Ana-Delhi and subwatersheds A15, A16, A17, A18

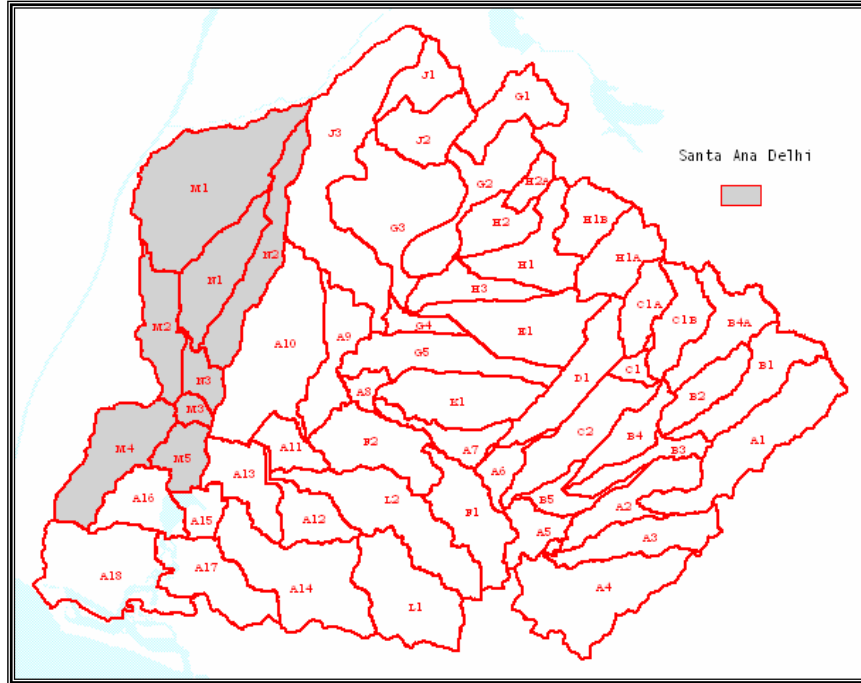


Figure A-3. Santa Ana Delhi watershed land use data (as of January 2001)  
 (Source: OCPFRD GIS dept.)

Santa Ana Delhi = sum of sub-watersheds N1 ,N2, N3, M1, M2, M3, M4, M5

Landuse	Acres	Total sq_miles	% using sq miles	% using acres
Commercial	2397.83	3.75	16.61	16.60
Education and Religion	160.50	0.25	1.11	1.11
Industrial	1102.27	1.72	7.62	7.63
No Available Data	1060.35	1.66	7.35	7.34
Recreational	178.15	0.28	1.24	1.23
Residential-Income	5285.79	8.26	36.58	36.58
Trans., Comm. and Utility	98.70	0.15	0.66	0.68
Vacant Land	825.17	1.29	5.71	5.71
Roads*	3338.54	5.21	23.07	23.11
<b>Total Watershed</b>	<b>14448.75</b>	<b>22.58</b>	<b>99.96</b>	<b>100.00</b>

\*Approximate figure based on the length of the centerline and the width of the ROAD  
 14448.75 is the total area of the watershed

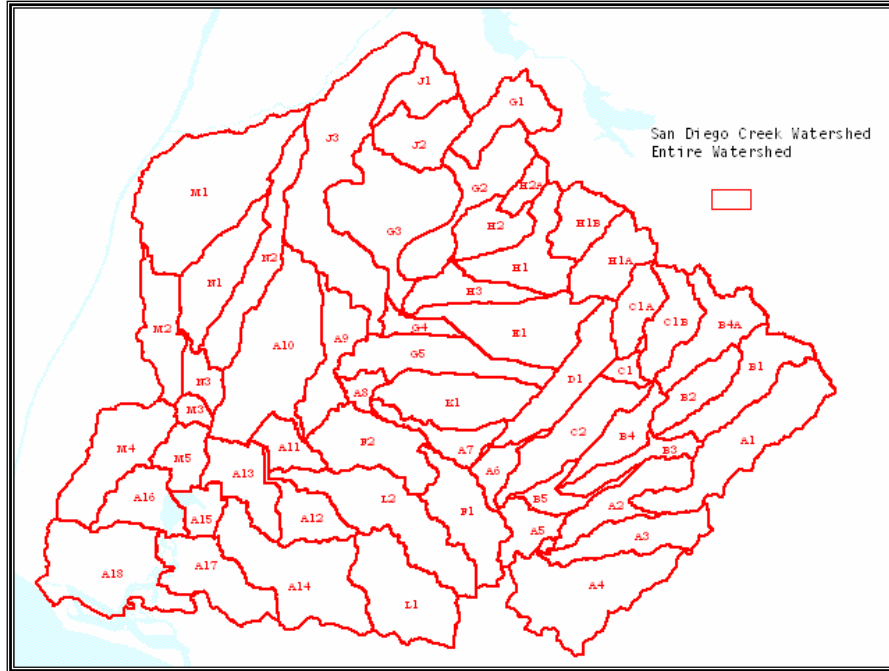


Figure A-4. Entire Newport Bay watershed land use data (as of January 2001)  
 (Source: OCPFRD GIS dept.)

**Entire Newport Bay watershed**

Landuse	Acres	Total sq_miles	% using sq miles	% using acres
Agricultural	5146.911	8.04	5.21	5.21
Commercial	9640.795	15.06	9.75	9.75
Education and Religion	406.257	0.63	0.41	0.41
Industrial	5263.535	8.22	5.32	5.35
No Available Data	23461.998	36.66	23.74	23.85
Recreational	529.514	0.83	0.54	0.54
Residential-Income	19420.282	30.34	19.64	19.74
Trans., Comm. and Utility	1326.735	2.07	1.34	1.35
Vacant Land	17393.645	27.18	17.60	17.68
Roads*	15773.57	24.64	15.95	16.04
<b>Total watershed</b>	<b>98847.148</b>	<b>154.45</b>	<b>99.49</b>	<b>99.93</b>
	<b>98363.242</b>	<b>153.67</b>		

\*Approximate figure based on the length of the centerline and the width of the ROW



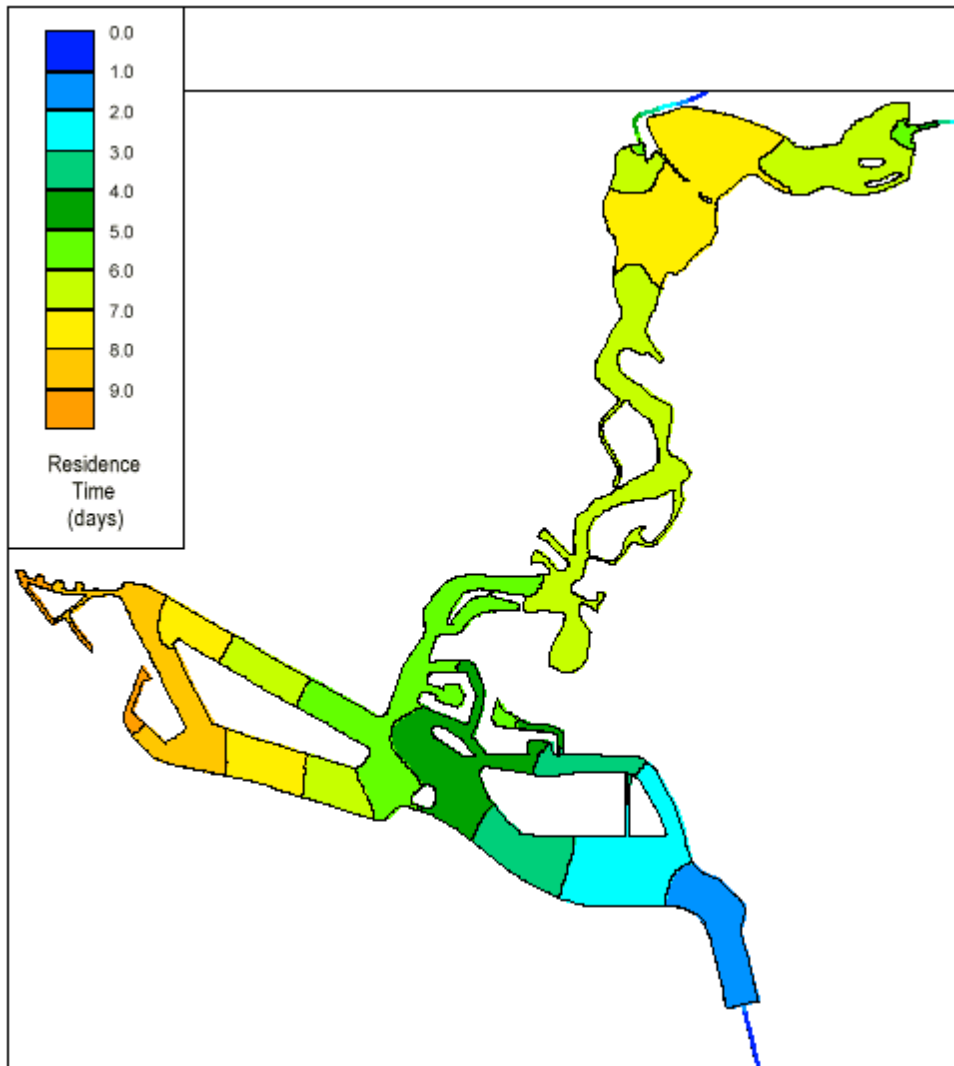


Figure A-5. Residence time for Newport Bay during neap tide conditions.  
(Source: RMA 2001)

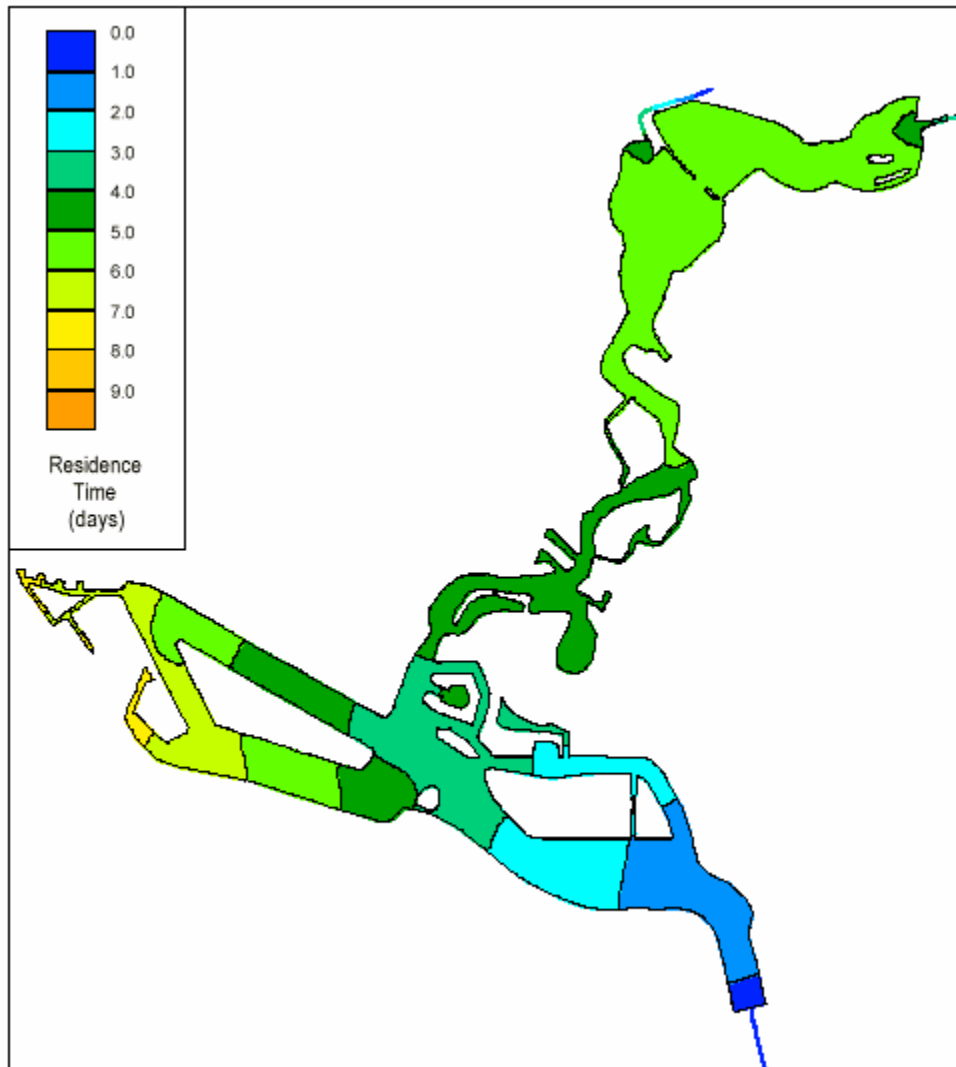


Figure A-6. Residence time for Newport Bay during spring tide conditions. (Source: RMA 2001)

US EPA ARCHIVE DOCUMENT



