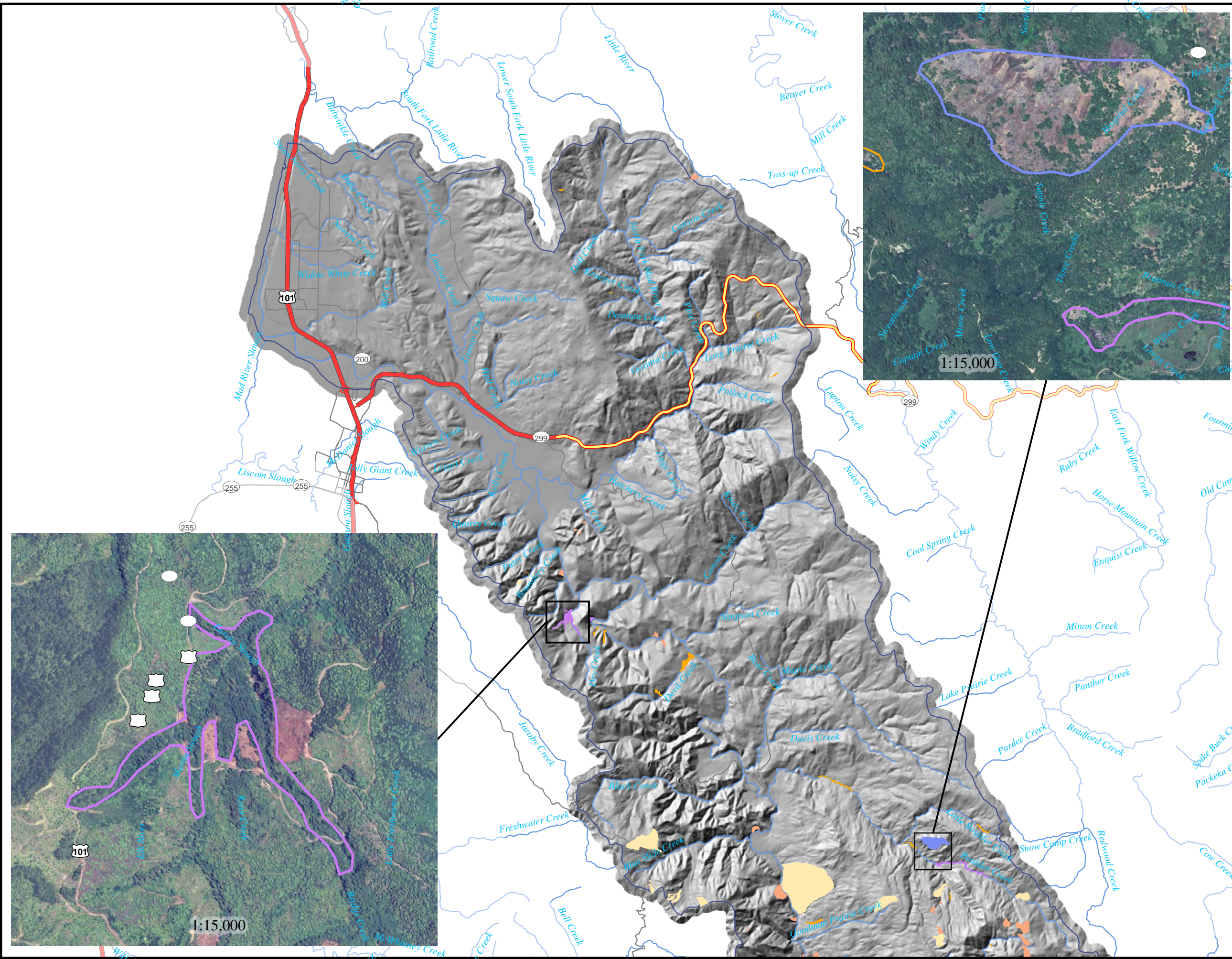








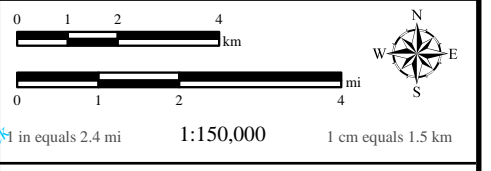
US EPA ARCHIVE DOCUMENT



### MAP LEGEND

**Failure Type**

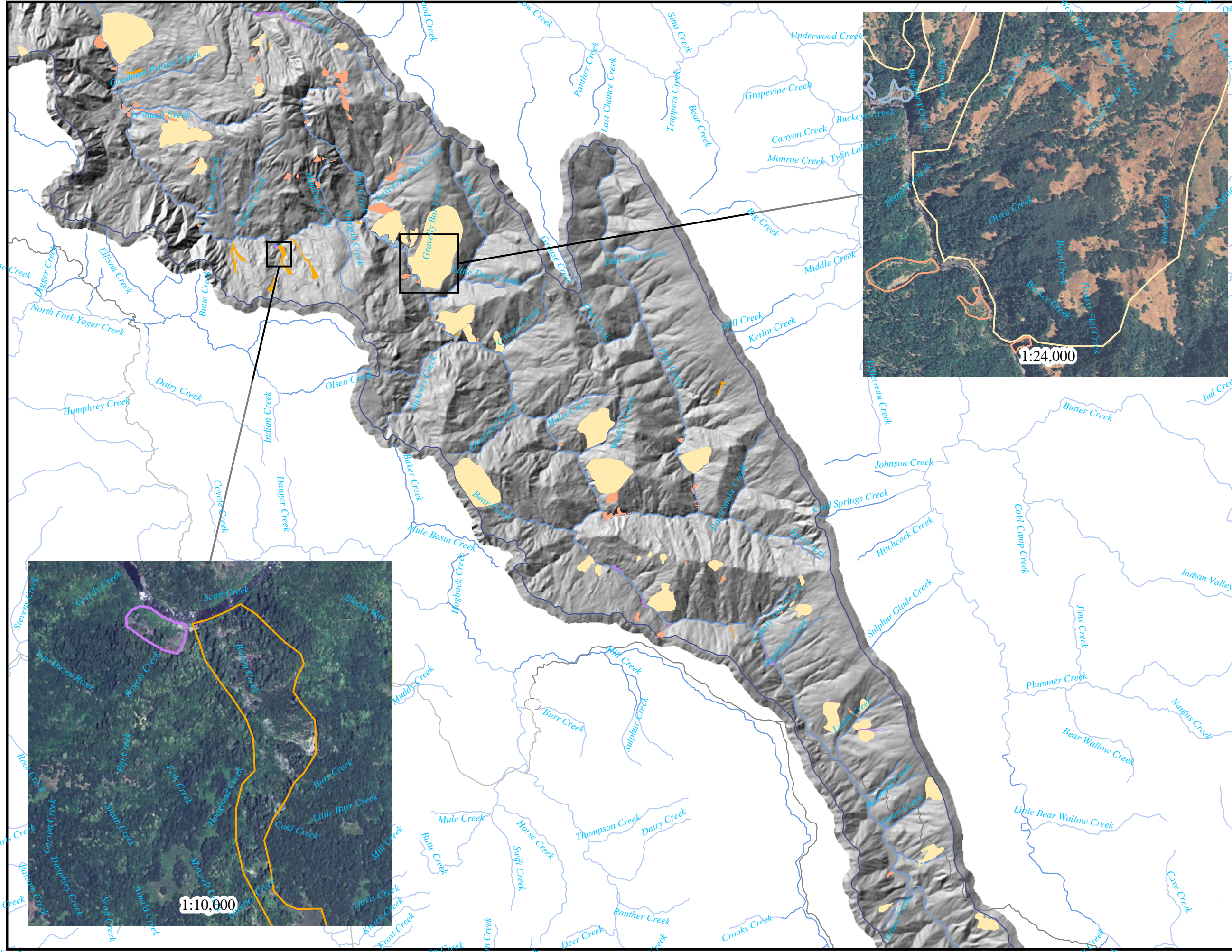
-  DF - Debris Flow
-  DS - Debris Slide
-  EF - Earth Flow
-  IG - Inner Gorge
-  RF - Rock Fall
-  RS - Rock Slide



**PLATE 10A**  
**POST 1975 LANDSLIDES**

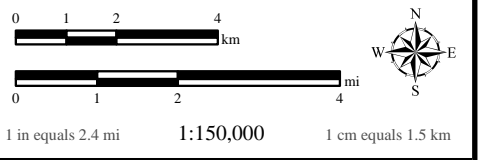
**MAD RIVER**  
**SEDIMENT SOURCE ANALYSIS**





**MAP LEGEND**

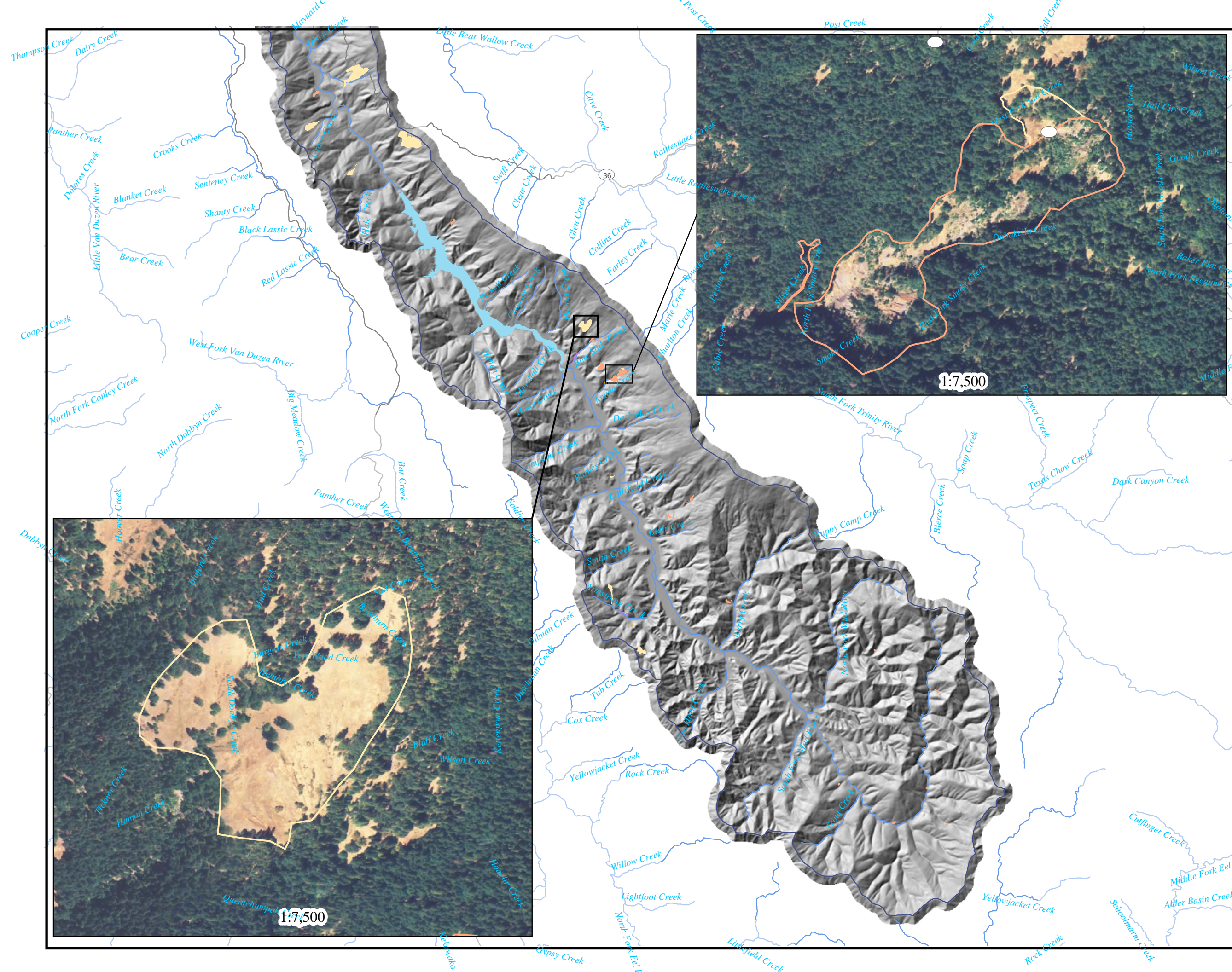
- Failure Type**
-  DF - Debris Flow
  -  DS - Debris Slide
  -  EF - Earth Flow
  -  IG - Inner Gorge
  -  RF - Rock Fall
  -  RS - Rock Slide







**PLATE 10B**  
**POST 1975 LANDSLIDES**

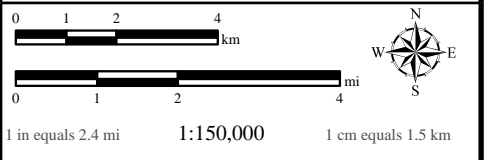
**MAD RIVER**  
**SEDIMENT SOURCE ANALYSIS**





**MAP LEGEND**

- Failure Type**
-  DF - Debris Flow
  -  DS - Debris Slide
  -  EF - Earth Flow
  -  IG - Inner Gorge
  -  RF - Rock Fall
  -  RS - Rock Slide



**PLATE 10C  
POST 1975 LANDSLIDES**

**MAD RIVER  
SEDIMENT SOURCE ANALYSIS**

