

US EPA ARCHIVE DOCUMENT

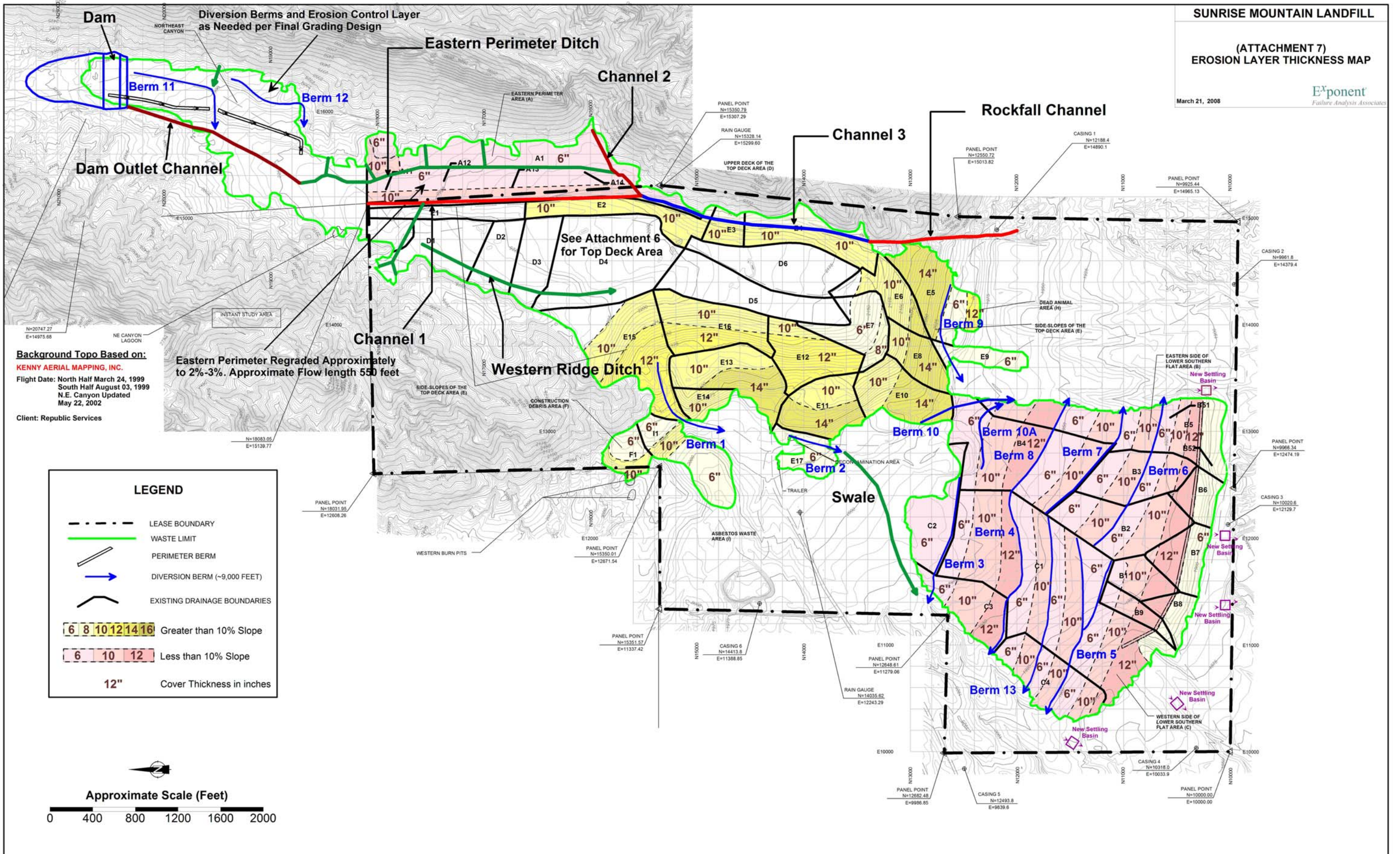


# SUNRISE MOUNTAIN LANDFILL

## (ATTACHMENT 7) EROSION LAYER THICKNESS MAP

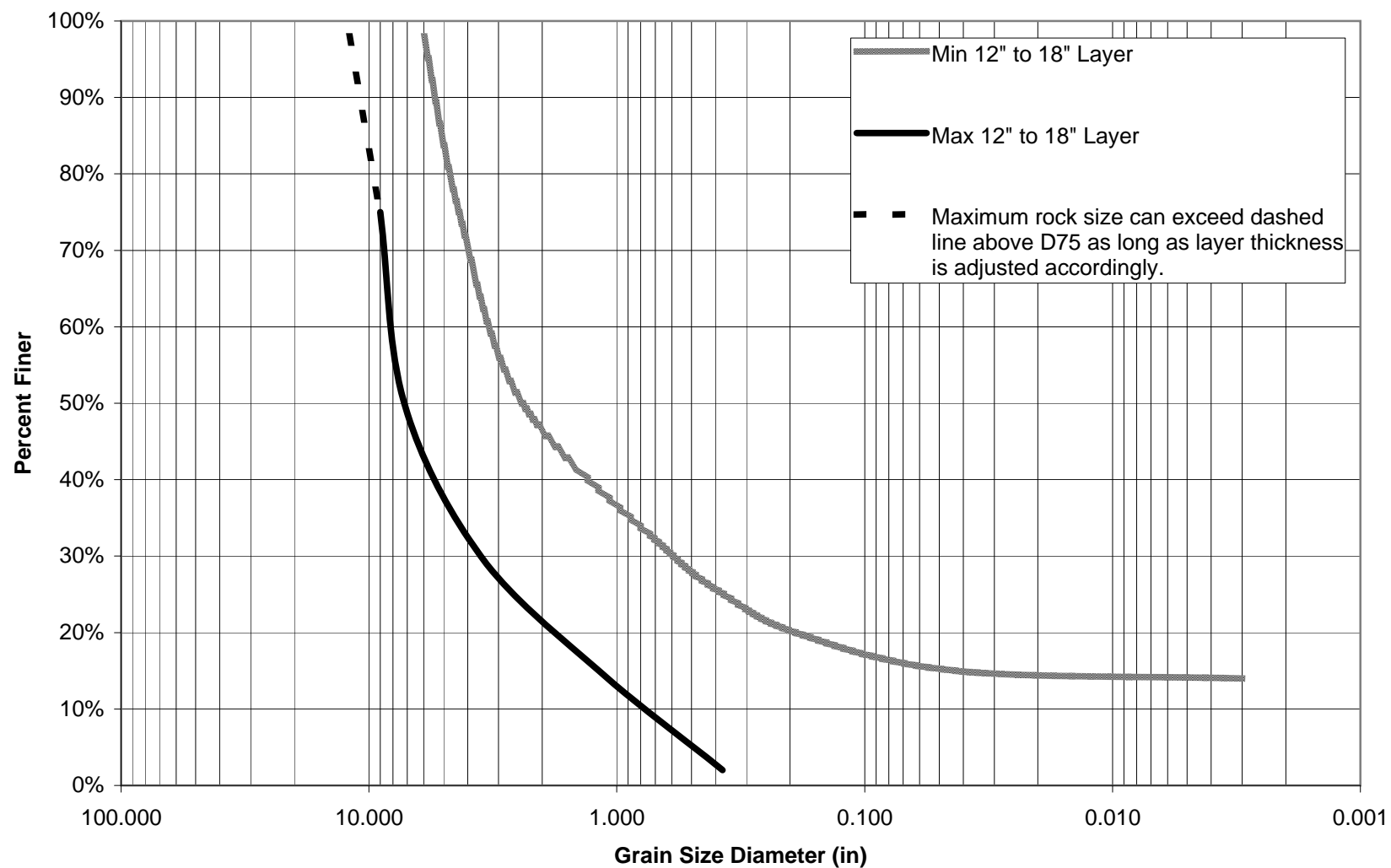
March 21, 2008

**E<sup>x</sup>ponent**  
Failure Analysis Associates

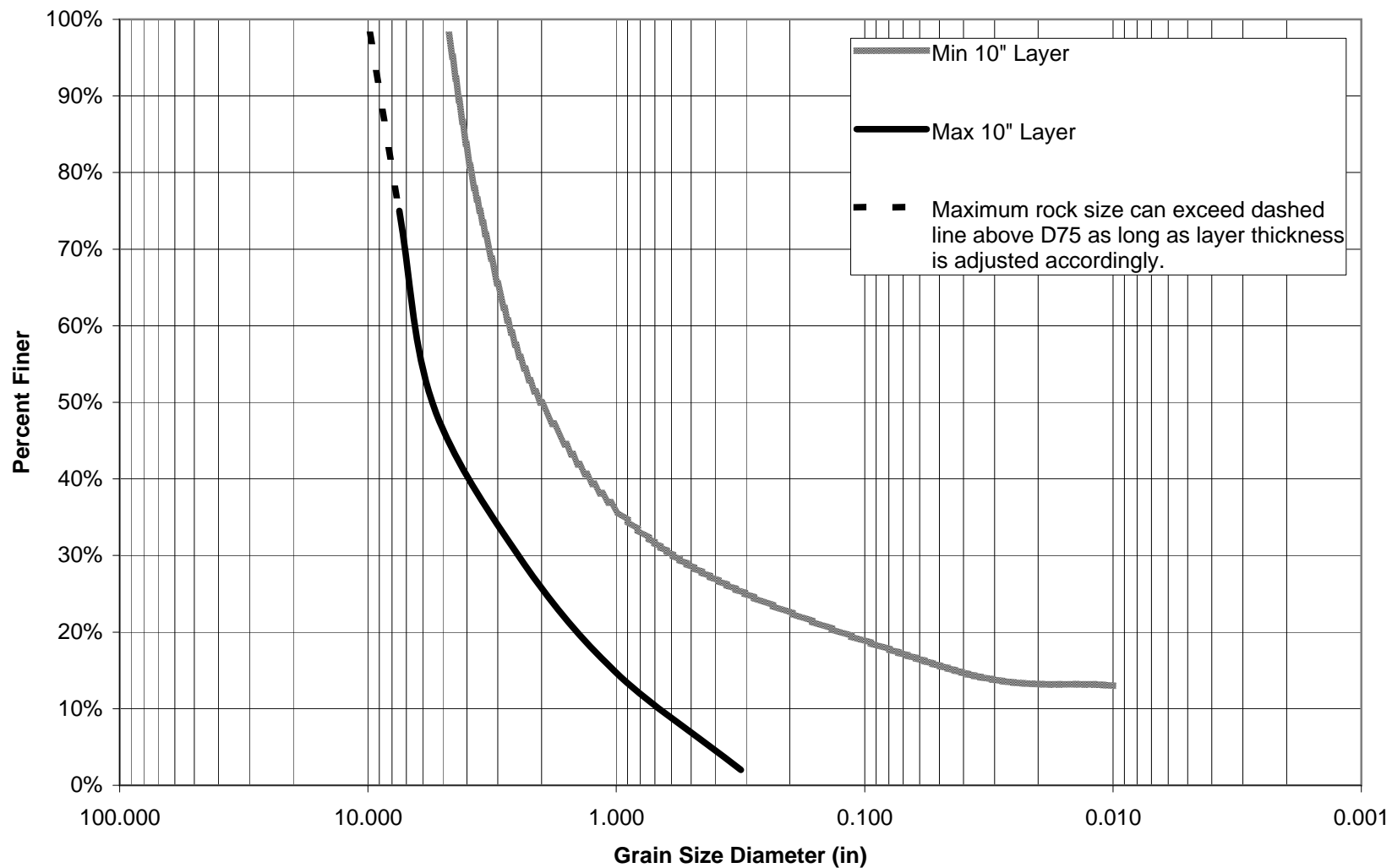




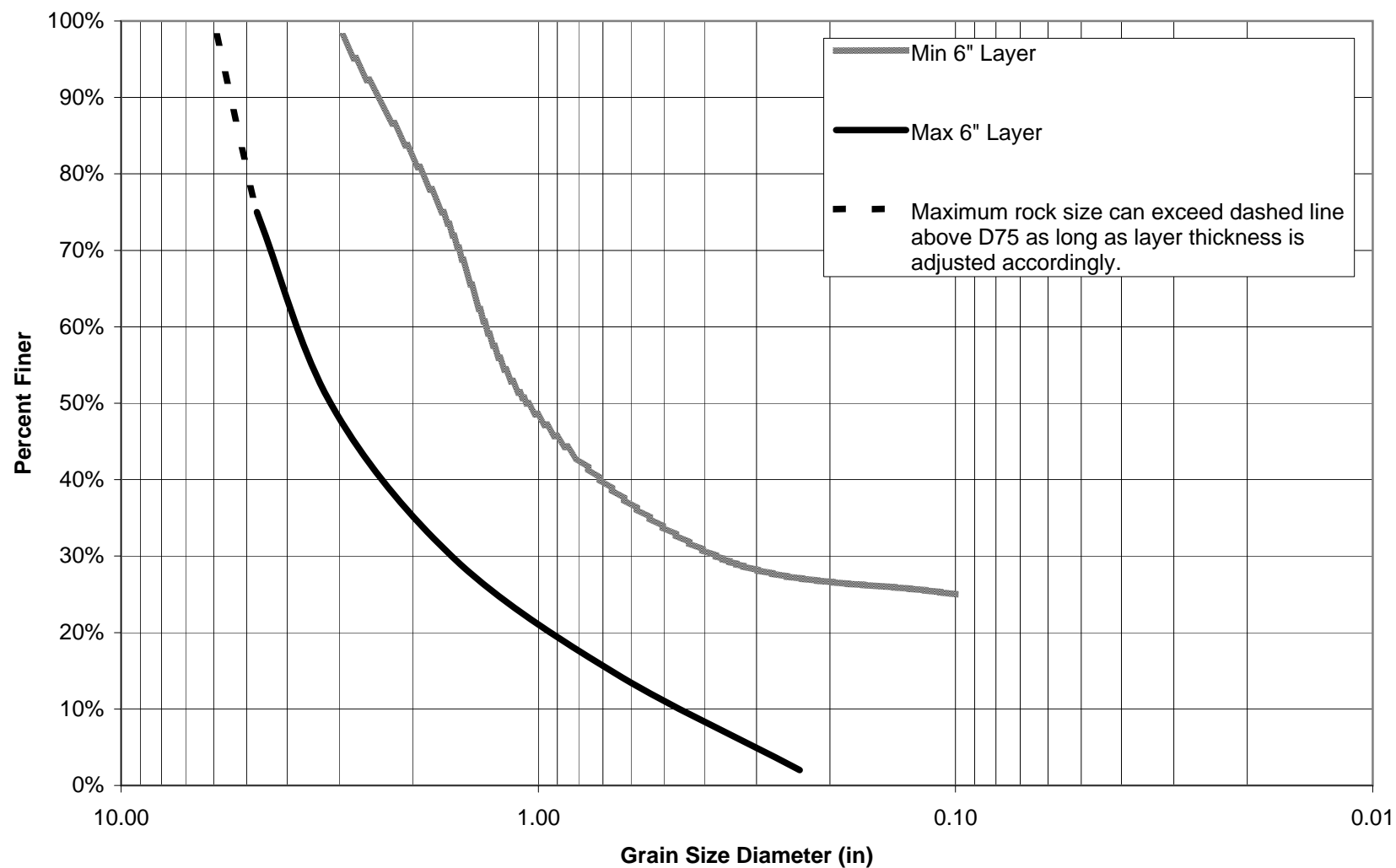
**Attachment 7a**  
**Gradation Range for 12-, 14-, and 18-inch Layer Thickness and**  
**Slopes Greater than or Equal to 10%**



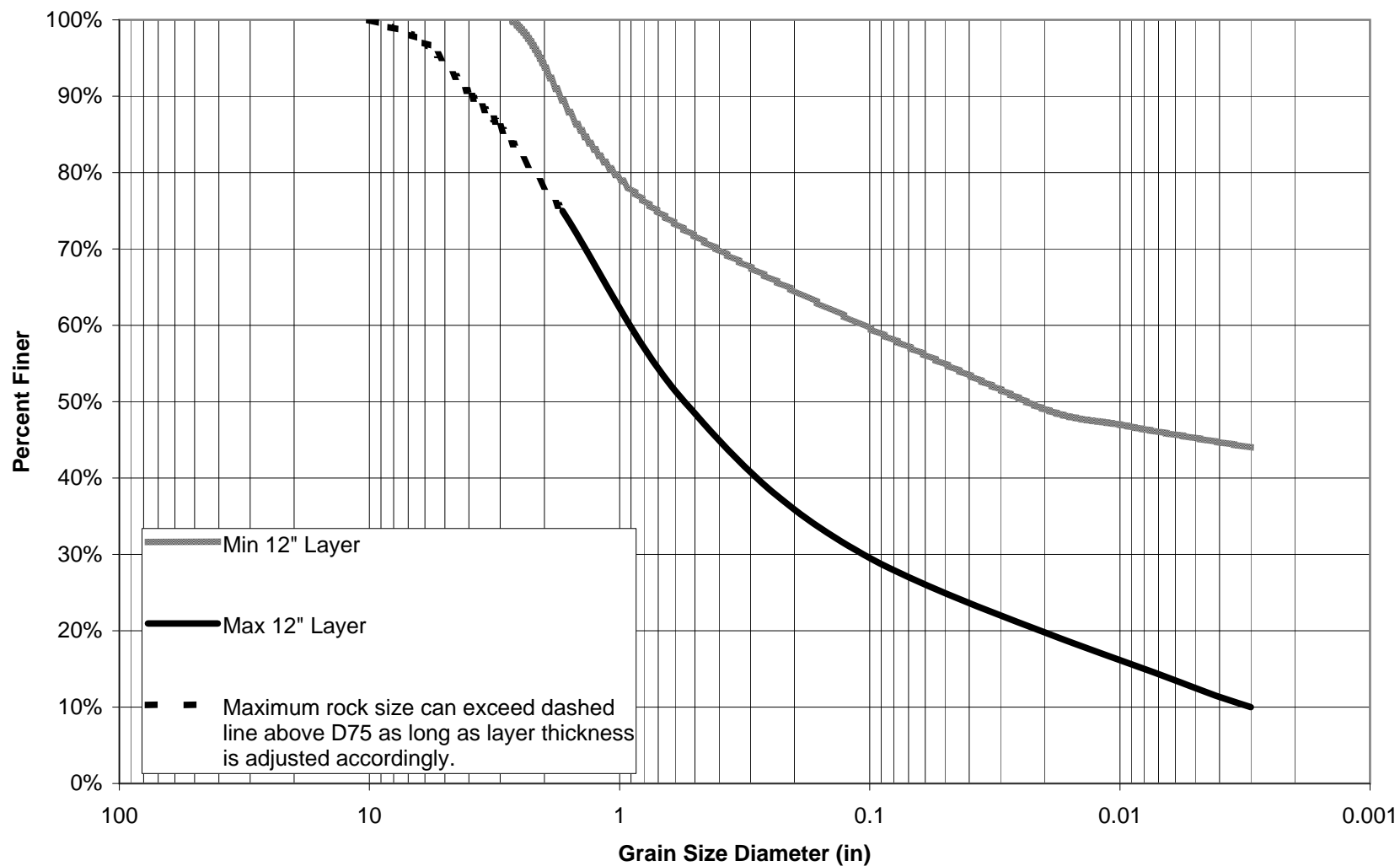
**Attachment 7b**  
**Gradation Range for 10-inch Layer Thickness and**  
**Slopes Greater than or Equal to 10%**



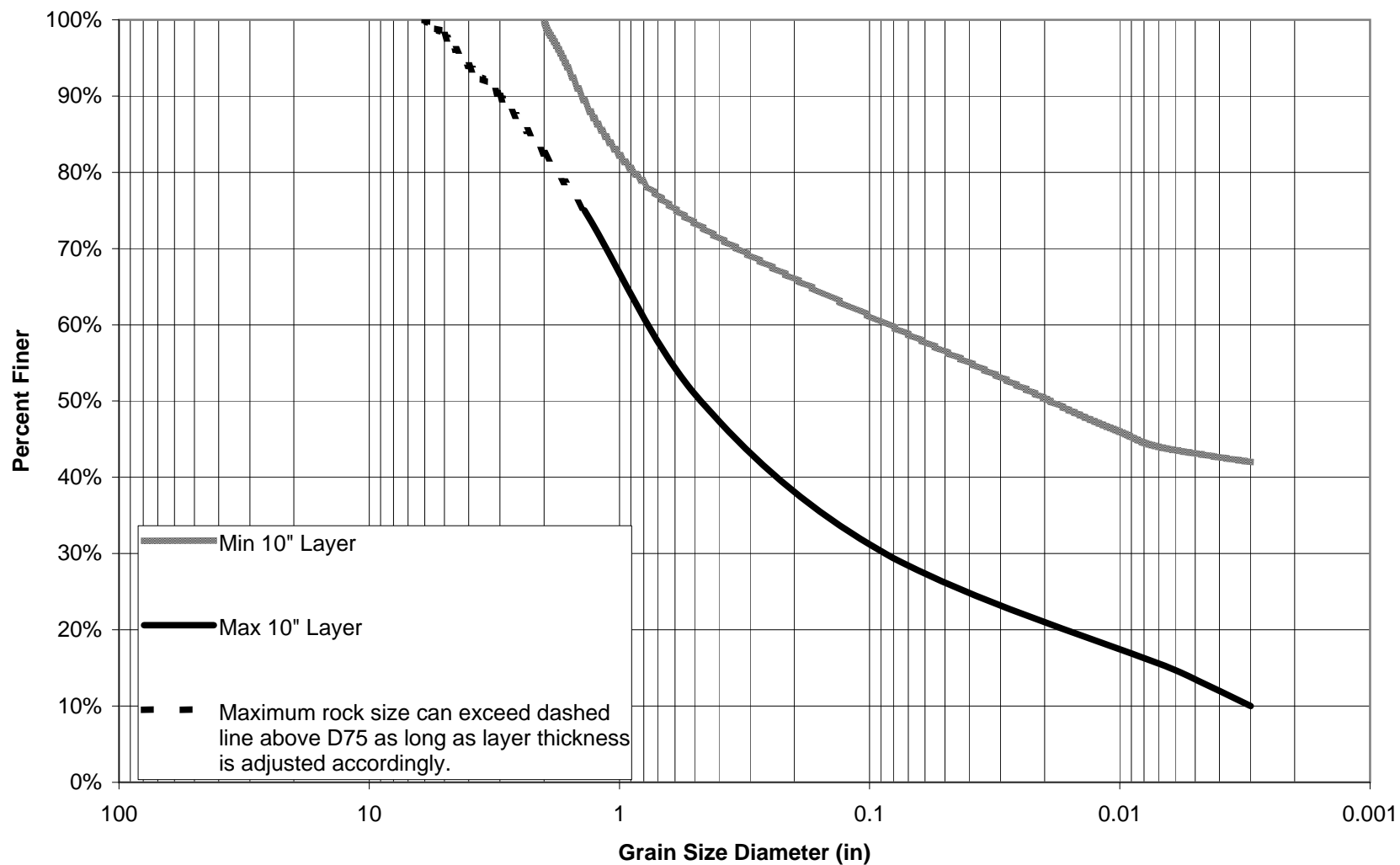
**Attachment 7c**  
**Gradation Range for 6-inch Layer Thickness and**  
**Slopes Greater than or Equal to 10%**



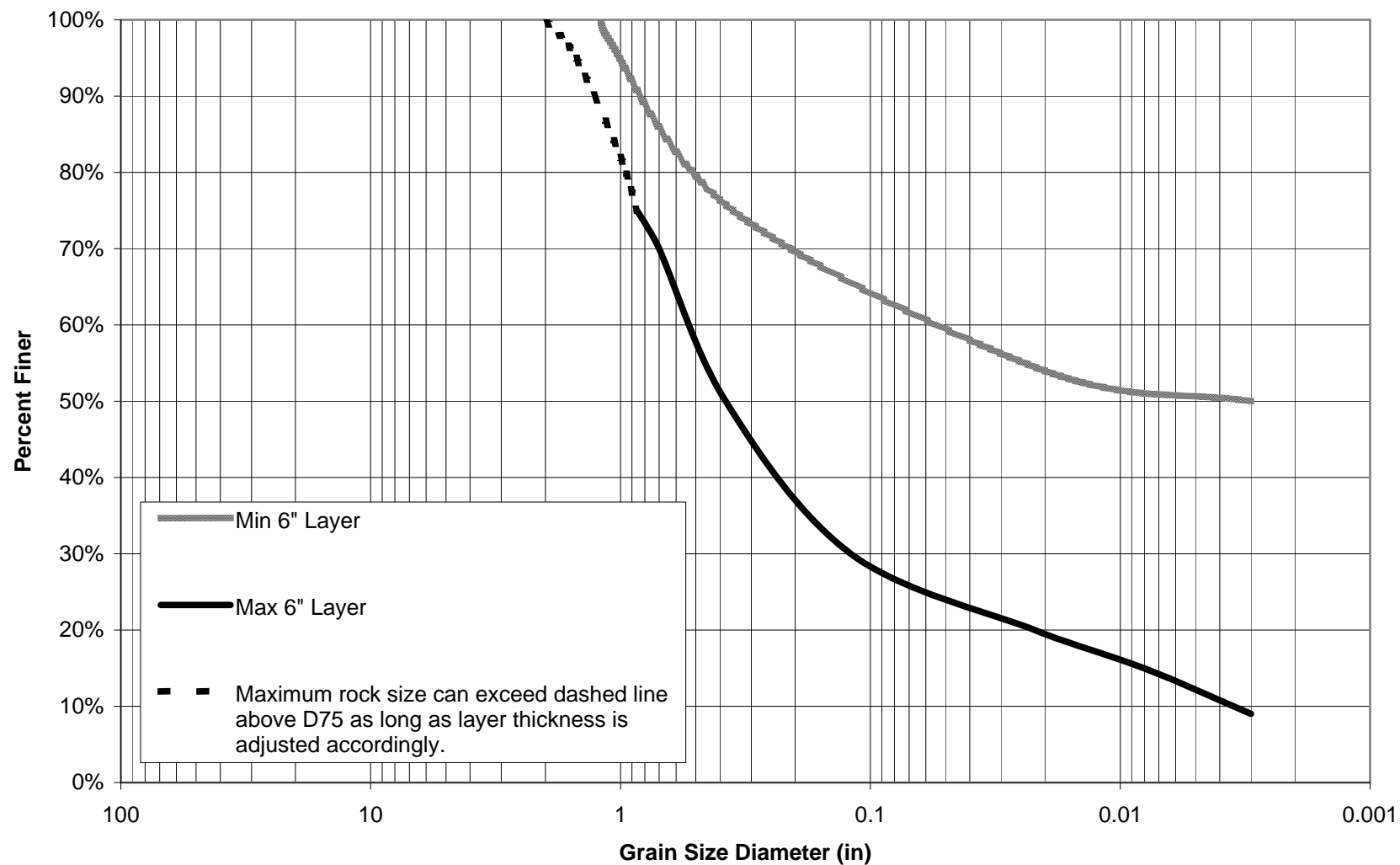
**Attachment 7d**  
**Gradation Range for 12-inch Layer Thickness and Slopes Less than 10%**



**Attachment 7e**  
**Gradation Range for 10-inch Layer Thickness and Slopes Less than 10%**

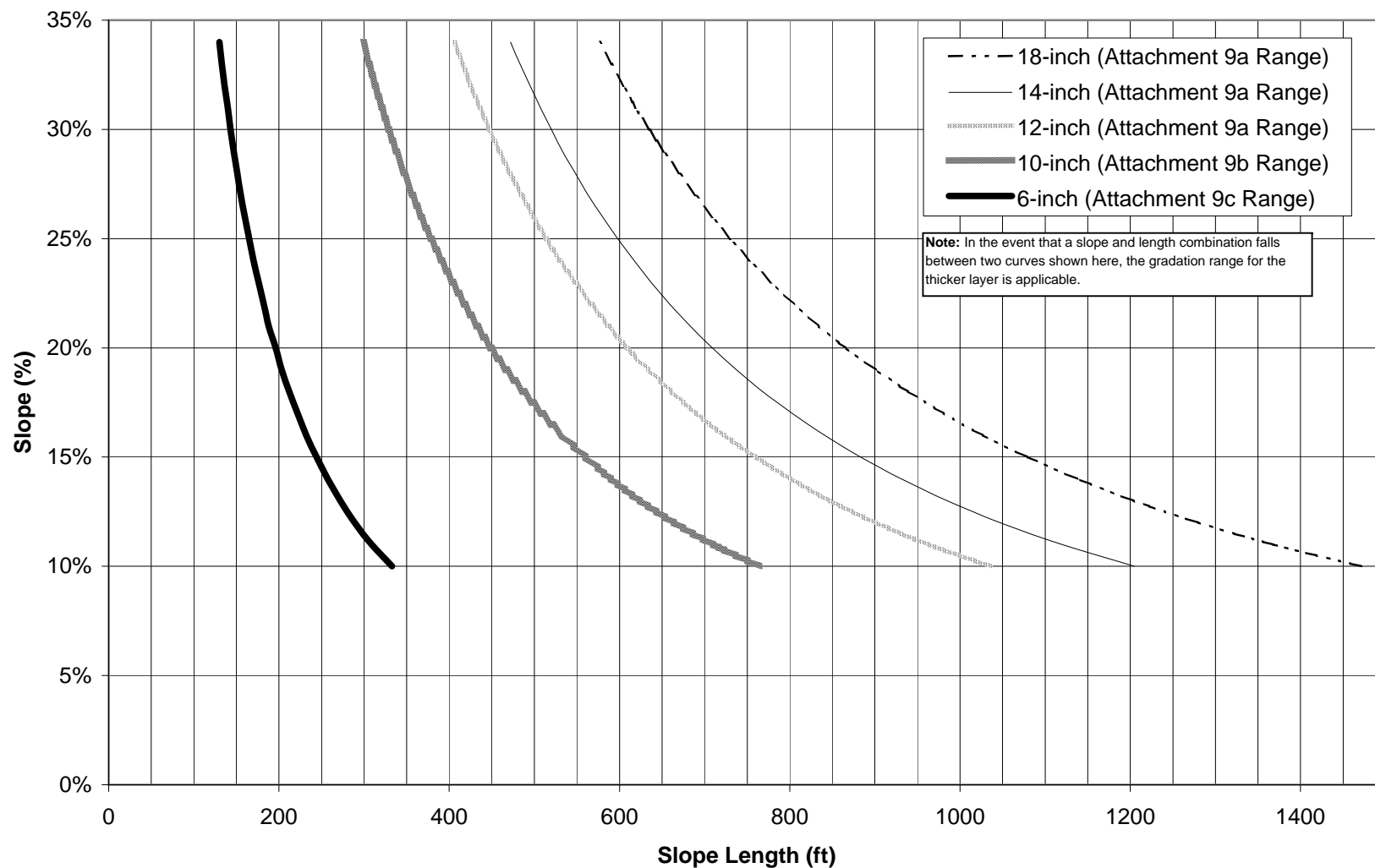


Attachment 7f  
Gradation Range for 6-inch Layer Thickness and Slopes Less than 10%





**Attachment 7g**  
**Slope and Length Combinations for Gradation Ranges for**  
**Slopes Greater than or Equal to 10%**



Attachment 7h  
Slope and Length Combinations for Gradation Ranges  
for Slopes Less than 10%

