


Rezycling with the White Mountain Apache Tribe

Tribal EPA Conference
Pala Ca.
October 21, 2011





June 2009, the Office of Environmental Health. contacted the WMAT Environmental Protection Office. OEH asked if EPO needs funds to assist their program.

Funds from this project allowed EPO to purchase equipment for illegal dumping activity and assist in their recycling effort.

2009 F-150 truck



Gas mileage 20 city/22 Hwy.

Towing is average of 18 mpg

Components on this truck/company are
made from recycled material

**2 custom built recycle
trailers from KB trailers**



Dimensions = 6.6' X 6' X 16'



**25 blue
Bins for plastic**

**10
Additional
Bins
Purchased
by EPO**



**25 green
bins for paper**

Items Recycled:

- *Plastics*
- *Aluminum cans*
- *Paper products*
- *Electronics*



Plastics



#1 PETE
Polyethylene
Terephthlate

- Water bottles
- Soda bottles
- Milk jugs
- Shampoo and Conditioner bottles

#2 HDPE
High
Density
Polyethylene

- Lotion bottles
- Dishwashing bottles
- Laundry detergent bottles
- Juice bottles

#3 PVC
Polyvinyl
chloride

- Plastic food wrap
- Vegetable oil bottles
- Loose-leaf binders
- Plastic pipes

If in doubt always
look for these



PET(E)

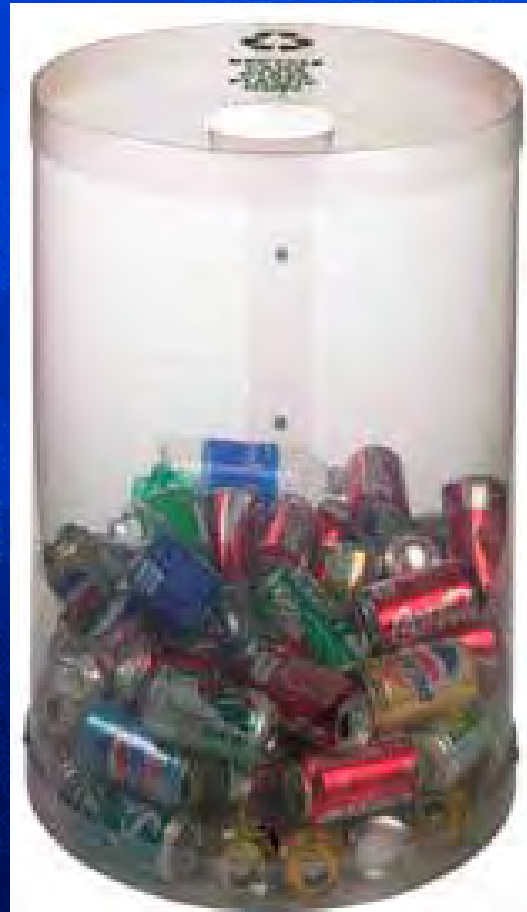


HDPE



Currently we
have 60
Clearstream
portable recycle
bins located in
various
departments
and homes

Coca Cola grant



EPO applied for this grant in April 2010 and asked for 30 bins

Awarded grant and received bins in June of 2010

Currently we have 25 bins in use

Great for indoors, not ideal for outdoor use

The bins were placed where Portable recycle bins weren't available and have a slower collection stream

Cause for Cans



These boxes are placed in areas where cans interfere with the plastic recycle bins

We have 34 boxes that are placed next to plastic recycle bins to prevent mixing of can and plastics

The cans collected are to be used for purchasing additional bags for the containers and additional equipment

The boxes were made available thru ITCA and Keep America Beautiful (KAB)



Cardboard boxes



Shoe Boxes



Mixed papers, etc...



Corrugated Cardboard



Cereal Boxes

Amount of Paper Recycled

- 
- November to August 2010
 - 45 loads
 - Average weight 2300 lbs or 1.15 tons
 - Total of 103,500 lbs or 51.8 tons
 - September to February 2011
 - 18 loads
 - Average weight was 4770 lbs or 2.4 tons
 - March 2011 to present 26,000 lbs or 13 tons
 - Total of 85,860 lbs or 42.93 tons

Total from start of program: 216,360 lbs or 108.18 tons

**Plastics are taken to
Lone Pine transfer
station**



Start of the project



Plastics being taken to the Lone
Pine Transfer Station


Preparing plastics for delivery to the Lone Pine Transfer Station



Lone Pine transfer station



Amount of Plastics Recycled

- 
- November 2009 to present
 - Average weight is 2,100 lbs per load
 - Average 4 loads per month
 - 8,400 lbs per month or 4.2 tons

**Total to date 134,400 lbs
or 67.2 tons of recycled plastics**

E-Waste

Personal electronics

**Cell Phones, Radios, Alarm Clocks,
Hair Dryers and All others**

Computers

**CPUs, Mouse, Keyboards, Printers,
Scanners, Or any other computer
peripheral**

CRT's (Cathode Ray Tube)

**Computer Monitors, Television
sets, TV/VCR combos, Or anything
else with a cathode ray tube**

Audio and stereo equipment

Telephones, fax and copying machines





- **First E-Waste event November 2009, collected over 24,000 lbs or 12 tons**
- **Second E-Waste event April 2010
Collected over 15,600 lbs or 7.8 tons**
- **ADEQ free E-Waste collection, over 6 tons was transported to Wal-Mart**
- **The third E-Waste event April 2011
over 15,000 lbs or 7.5 tons**
- **The second free E-Waste event over
16,000 lbs or 8 tons was transported
to Wal-Mart**
- **Currently over 10,000 lbs or 5 ton of
old TV's need recycling**

Geronimo Pass Landfill



Photos of what is
taken to the landfill

Recyclables at GPL

- Paper Products – 45%
- Plastics – 30%
- Aluminum – 5%
- Food Waste – 5%
- Others – 15%













Projects

Waste characterization for communities

Prepare for Earth Week 2012 Activities

- Choosing new site for ERIC
- Garden Expo at East Fork Lutheran School
- E-Waste disposal at GPL
- Auto Emission Challenge
- RezCycle Challenge
- Community clean-ups
- Reduced rate for the Public at the landfill
- Increase plastic number recycled to #5

Composting program with schools



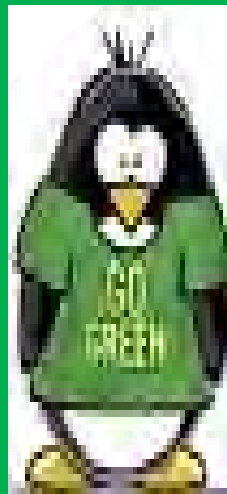


Terry Hill
WMAT Environmental Specialist
2109 E. Walnut St.
PO Box 2109
Whiteriver, AZ.85941
(928) 338-2484
thill@wmat.us

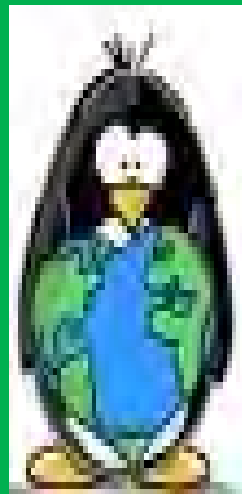


Al

Daryl



Earl



Victor



Davis

