

US EPA ARCHIVE DOCUMENT

# EPA Region 6 Uranium Overview

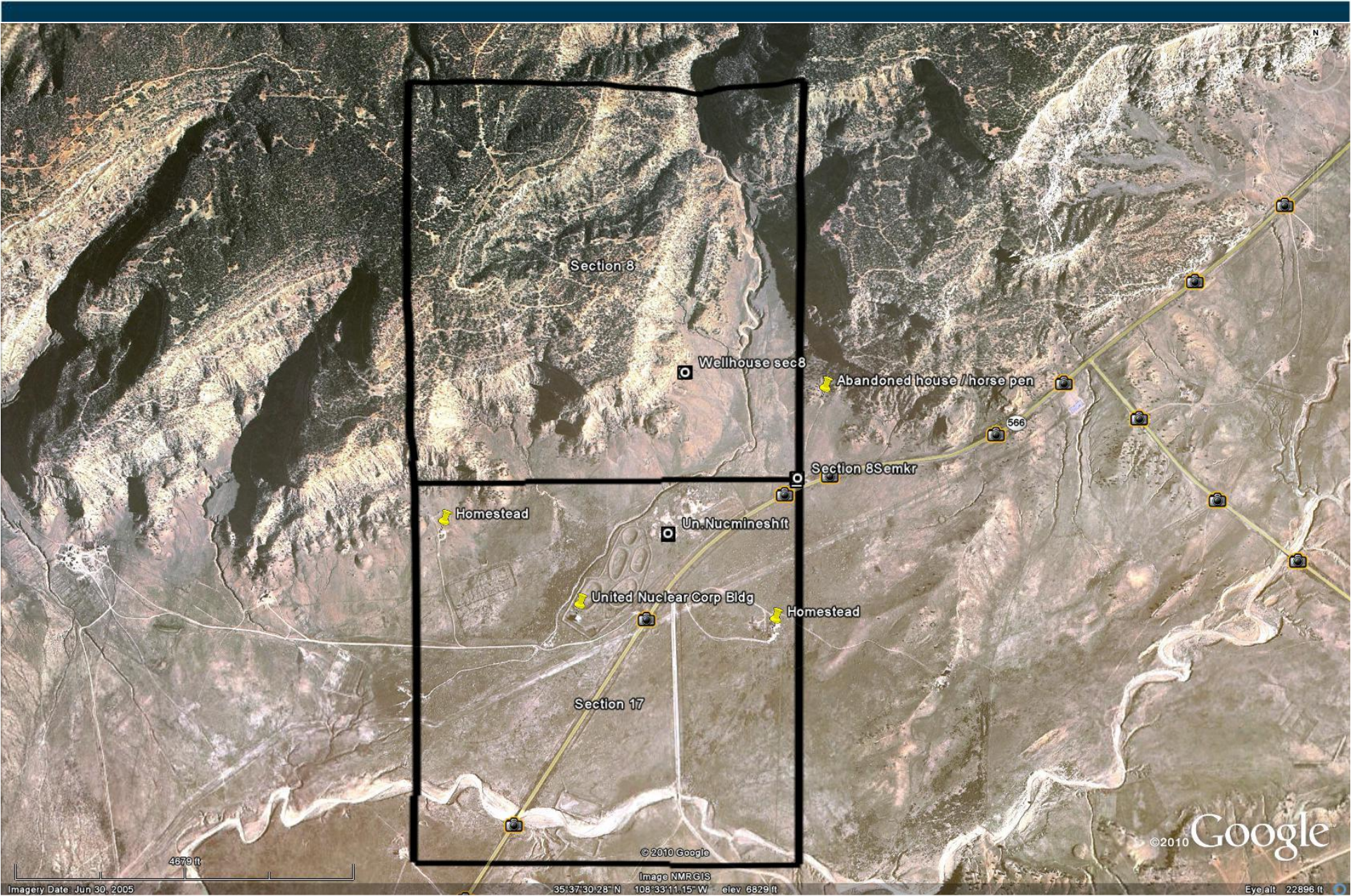
Philip Dellinger, Chief  
Ground Water/UIC Section  
US EPA Region 6  
Dallas, Texas



The U.S. Environmental Protection Agency - Region 6  
Water Quality Protection Division







Imagery Date: Jun 30, 2005      35°37'30.28" N    108°33'11.15" W    elev 6829 ft      Eye alt 22896 ft



The U.S. Environmental Protection Agency - Region 6  
Water Quality Protection Division







GR 1978 CO

UNC

T 16 N

S 8 S 9

S 17 S 16

R 16 W

6823.33

LS 6540

287920.04

1683354.14

x

x





The







- (a) It does not currently serve as a source of drinking water;
- *and*
- (b) It cannot now and will not in the future serve as a source of drinking water because:
  1. It is mineral, hydrocarbon or geothermal energy producing;
  2. It is at a depth wherein recovery of the water for drinking water purposes is economically or technologically impractical;





3. It is economically or technologically impractical to render the water fit for human consumption; *or*
4. It is located over a Class III well mining area subject to subsidence or catastrophic collapse;  
*or*
  - (c) The TDS content of the ground water is  $> 3,000$  and  $< 10,000$  mg/l and is not reasonably expected to supply a PWS.





# Questions?



The U.S. Environmental Protection Agency - Region 6  
Water Quality Protection Division

