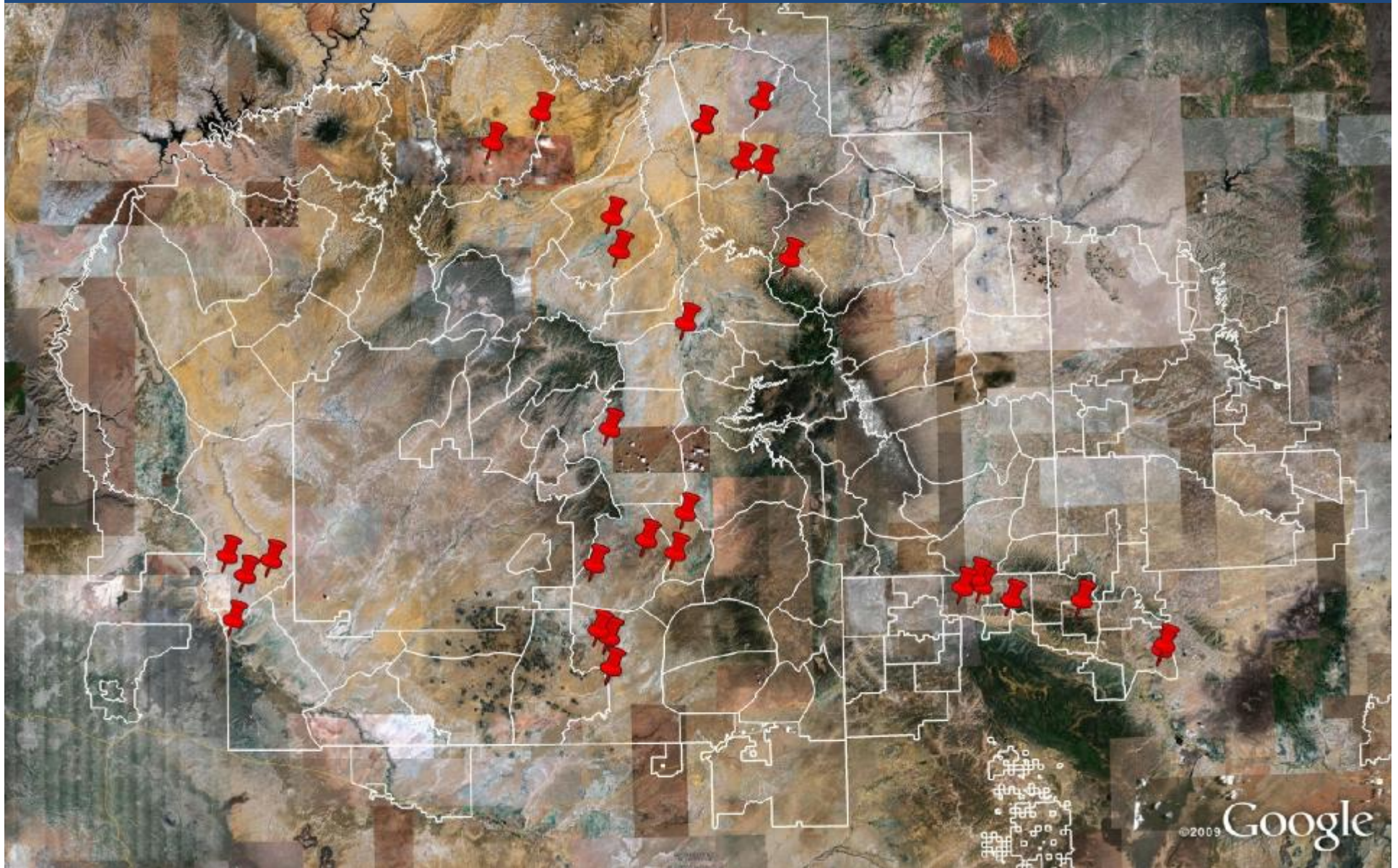


US EPA ARCHIVE DOCUMENT

Uranium Contaminated Water Sources



Addressing Contaminated Water Sources

1. Extend piped water where feasible
 - \$24M for 13 projects to serve 480 homes and benefit additional 1017 homes (funds provided by IHS, EPA, HUD, FY09 – FY12)
2. Make safe drinking water more accessible to residents who are not connected to piped water
3. Implement pilot water hauling program
 - \$2.6M EPA funds, program extended 2 years
4. Provide outreach on safe water hauling practices
5. Pilot alternative water treatment technologies
6. Close contaminated water sources when Chapter supports (3 closed)

Shiprock to Sweetwater Transmission Main

- 32 mile transmission main extension
- Serves 2000 homes, including first service for 92 homes near 4 contaminated water sources
- \$9.6M IHS/EPA funds
- Target online May



Oljato Monument Valley waterline extension



- 52 mile waterline extension
- Serves 128 homes without piped water, near 2 contaminated water sources
- \$4.7 IHS/HUD funds
- Target online summer 2013

Dennehotso Water System

- 53 mile waterline
- Serves 107 homes without piped water, near 2 contaminated water sources
- \$4.75M provided by IHS/EPA/HUD funds for new public water system
- Target online summer 2013



North Mariano Lake Waterline Extension

- Serves 58 homes without piped water near 1 contaminated water source
- \$1.8M IHS/EPA funds
- Online



Haystack Waterline Extension



- Serves 8 homes near 2 contaminated water sources
- \$200,000 IHS/EPA funds
- Online

Projects underway

- \$964,000 EPA funds for Mexican Water extension to serve 38 homes - design started
- \$2,640,000 EPA funds for Navajo Nation's Department of Water Resources water hauling program



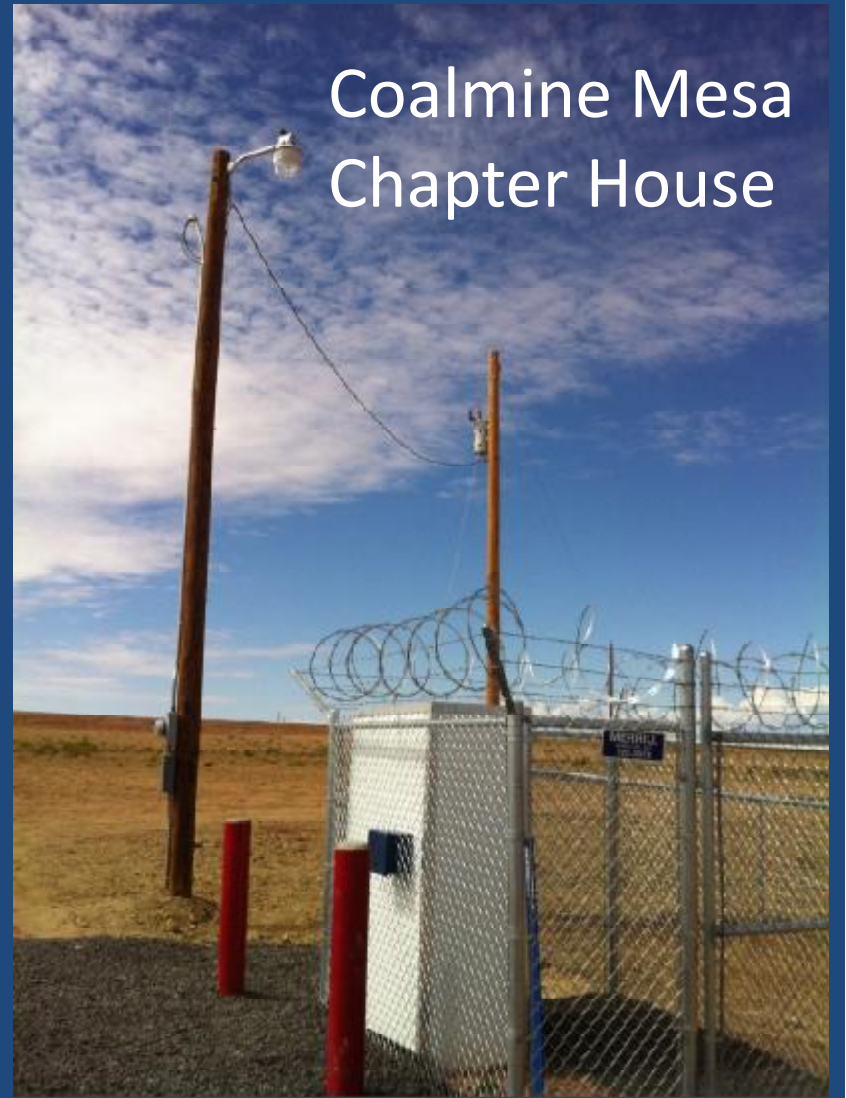
New Regulated Water Hauling points

Red Mesa Chapter House



Baca Chapter House

Coalmine Mesa Chapter House



Solar Desalination Research Pilot Demonstration



Mitch Haws
623-773-6274
mhaws@usbr.gov



- Treatment to be installed at well 5T-529 for livestock use
- NNDWR constructed 7 mile pipeline to deliver water near Box Springs contaminated water source

*Welcome to A New Day,
and New Ways to Think About...*



YOUR **NAVAJO** WATER
LEARN • TEACH • LIVE



Outreach on safe water hauling practices



ATSDR

AGENCY FOR TOXIC SUBSTANCES
AND DISEASE REGISTRY

Next 5 years: expand focus to all AUM mining areas?

