

US EPA ARCHIVE DOCUMENT

**Navajo Superfund Program Involvement**  
**at the Skyline Uranium Mine Site**

Presenter: Eugene Esplain (Coyote Pass/Bitter Water)

**Navajo Superfund Program - Site Assessment**

**Waste Regulatory Compliance Dept.**

**Navajo Nation Environmental Protection Agency**





# Navajo Nation EPA

## Air and Toxics

- Air Quality
- Asbestos
- Pesticide Enforcement and Development
- Radon

## Waste Regulatory Compliance

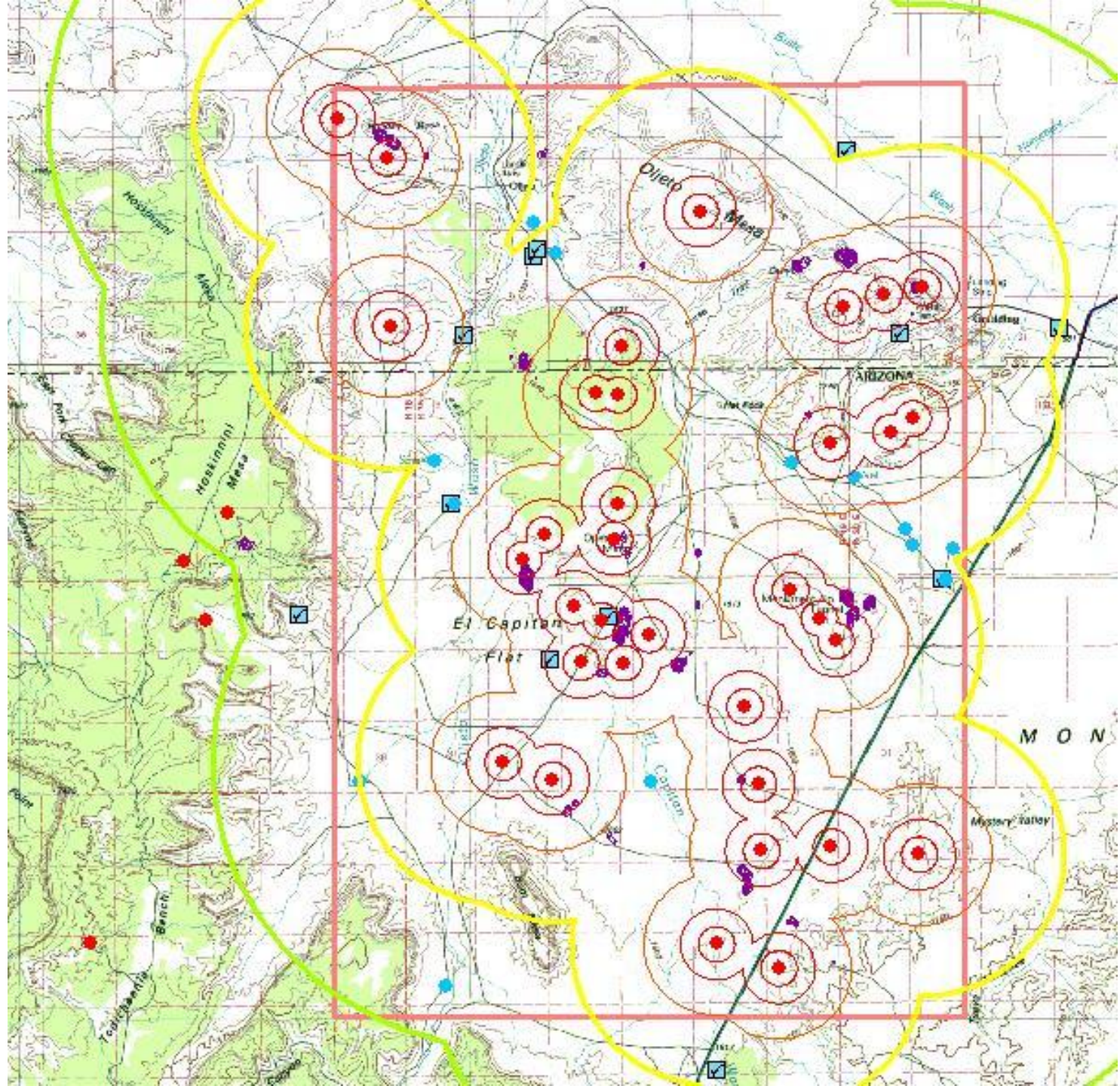
- Hazardous Waste
- Underground Storage Tanks
- Resource Conservation & Recovery
- **Superfund**

## Surface and Groundwater Protection

- Public Water Supervision
- Underground Injection Control
- Water Quality/ NPDES

## Enforcement

- Attorney
- Rangers

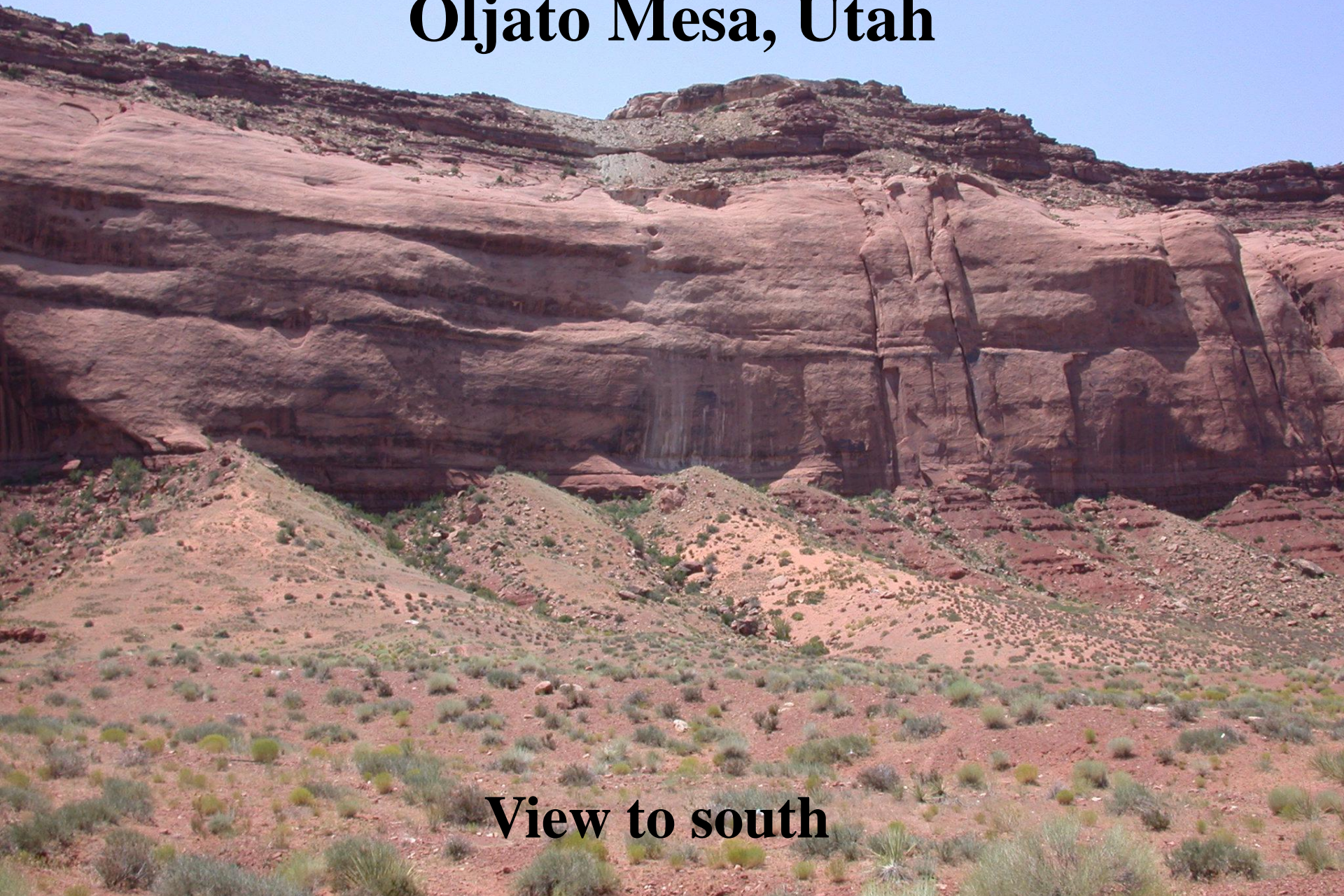




# Navajo Nation



# **Skyline Abandoned Uranium Mine Oljato Mesa, Utah**

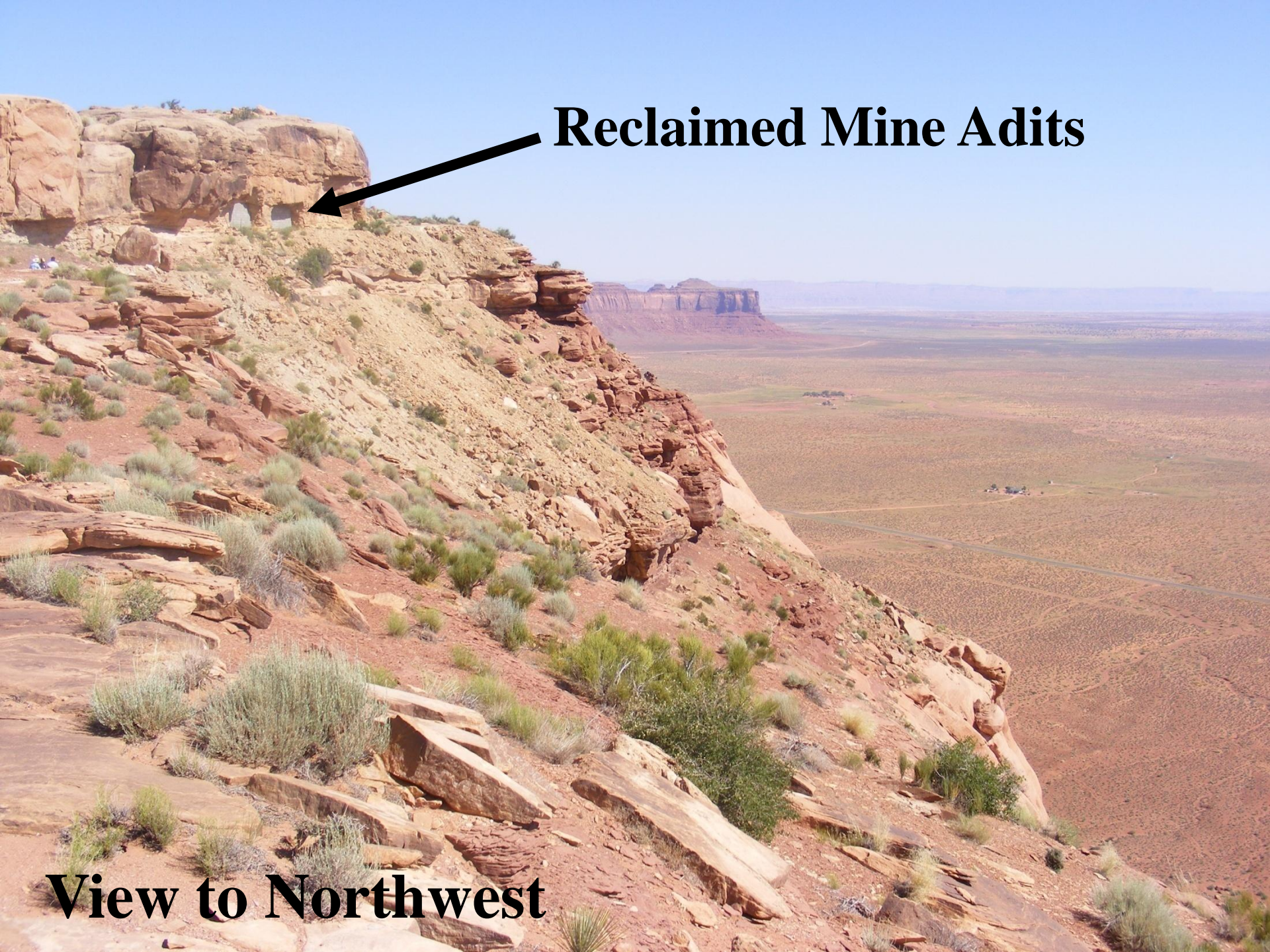


**View to south**

**Reclaimed Mine Adits**



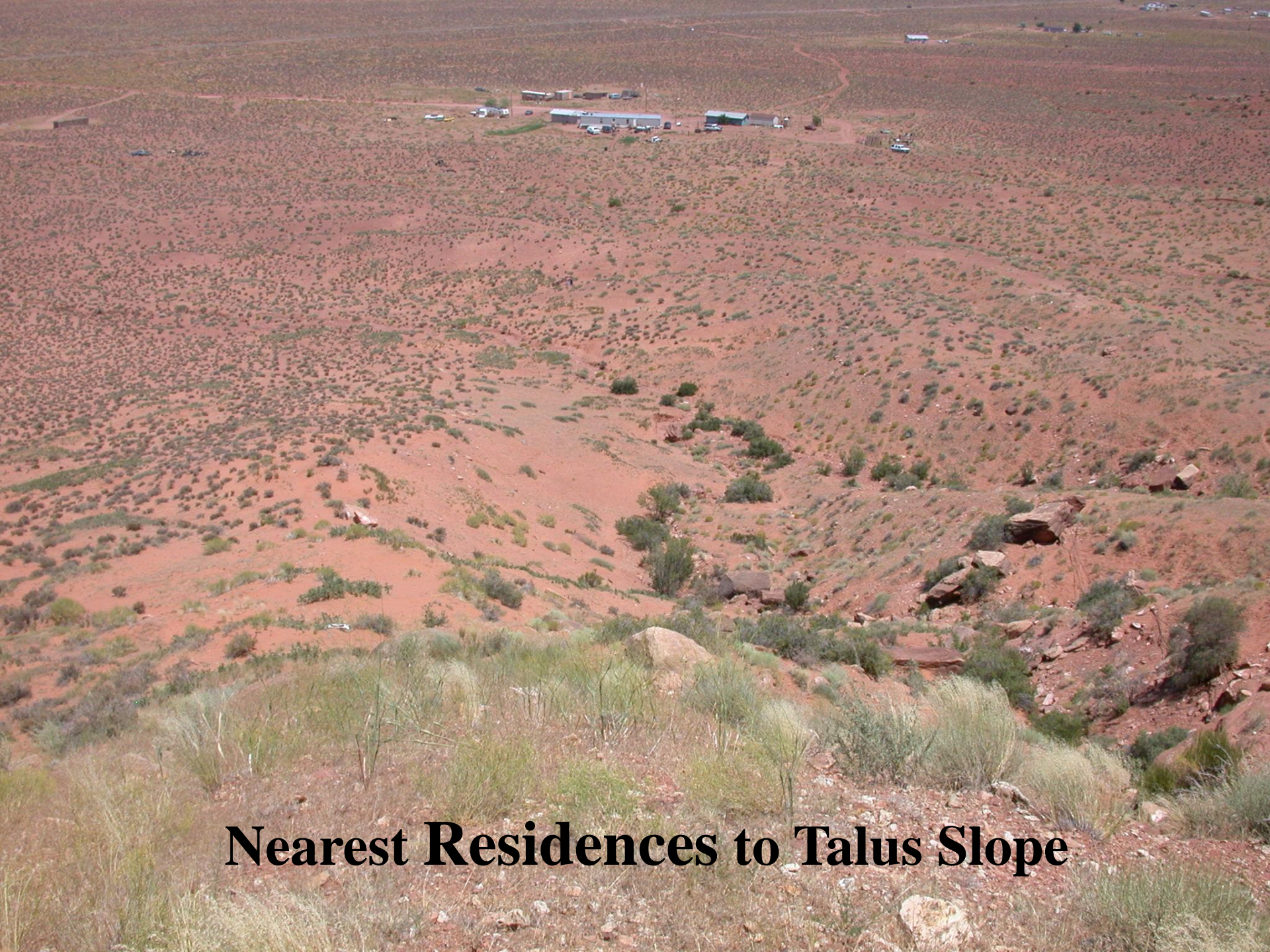
**View to Northwest**



**Wastes on  
Benches/  
Ledges**

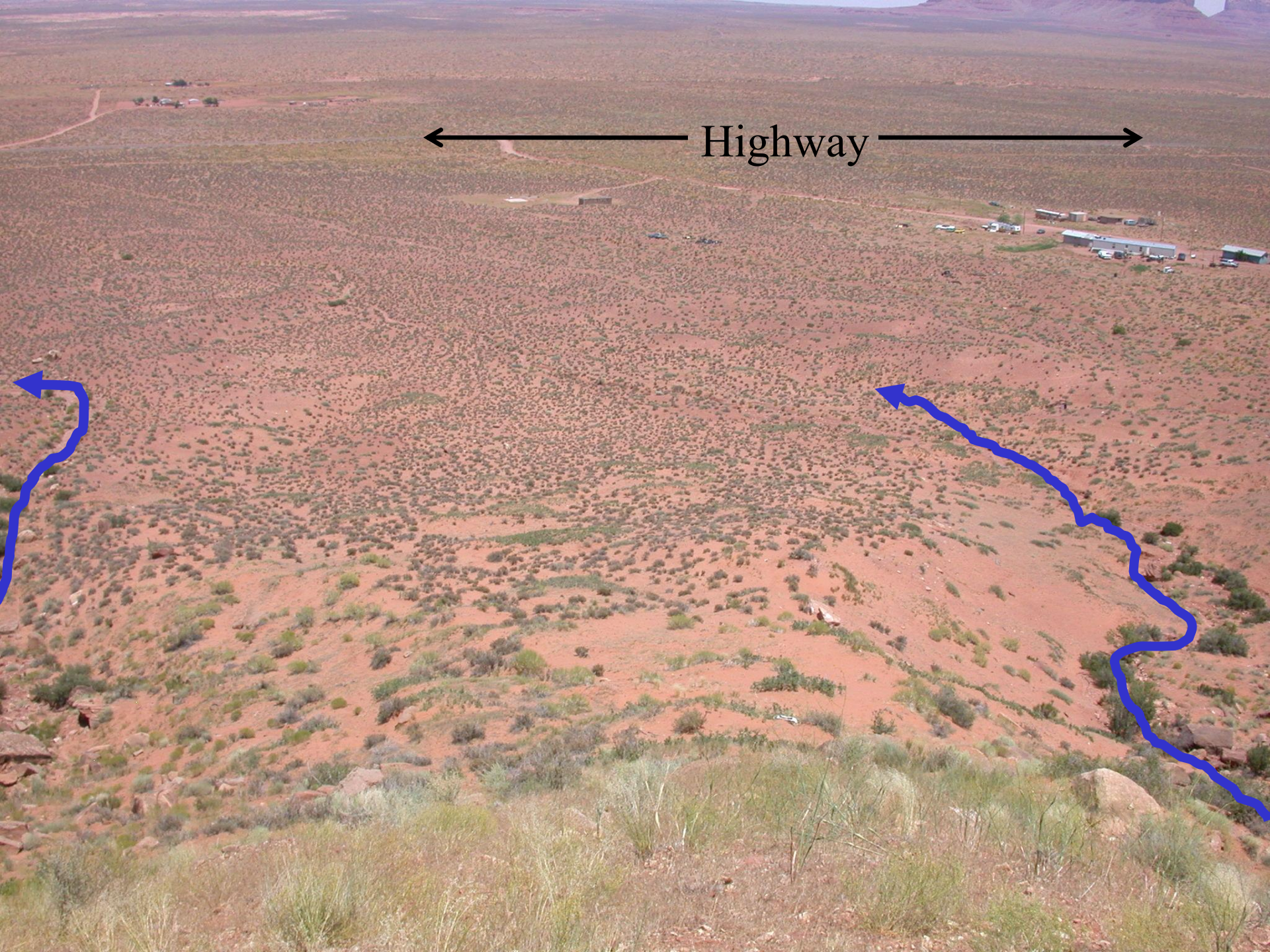


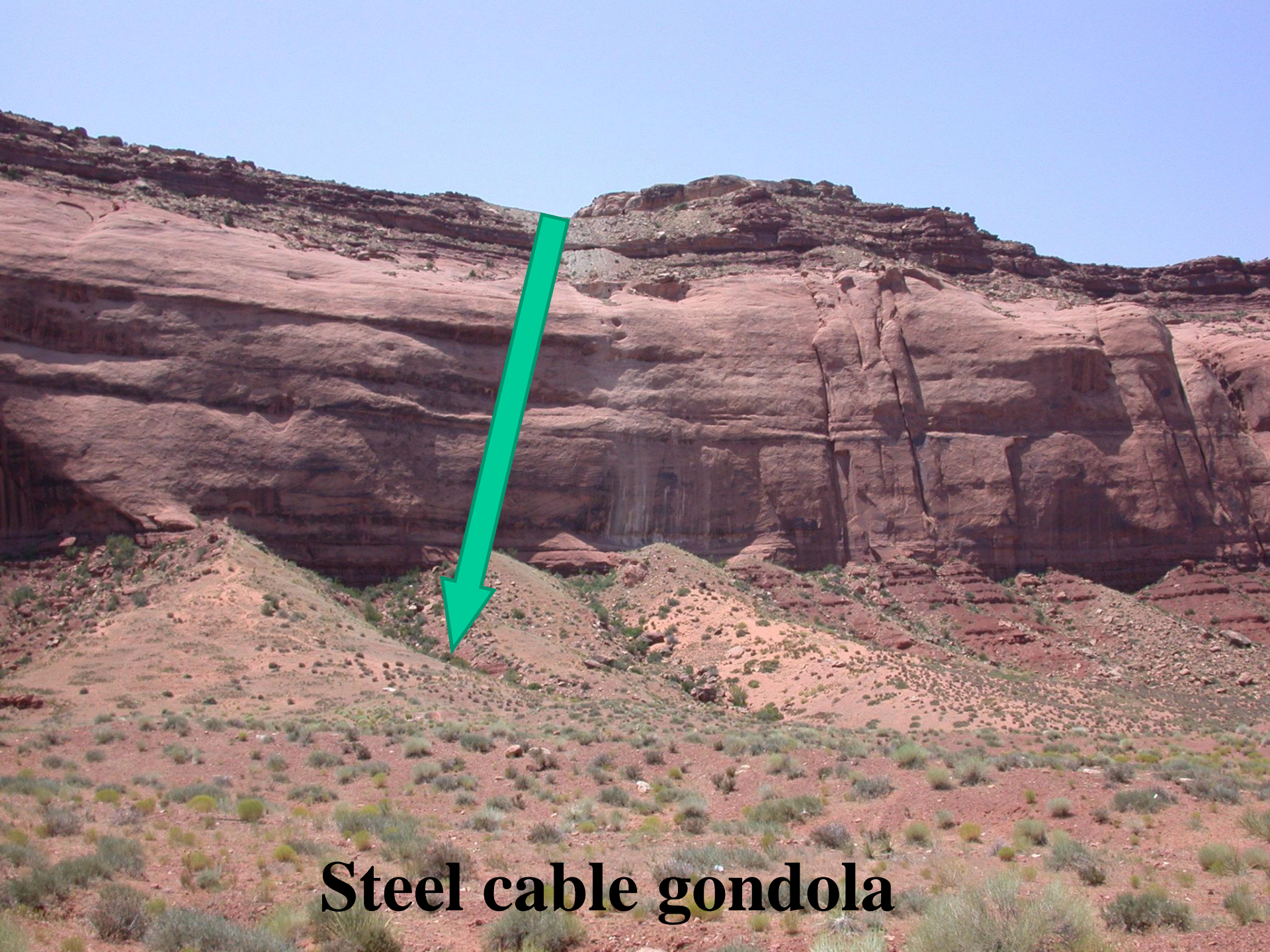




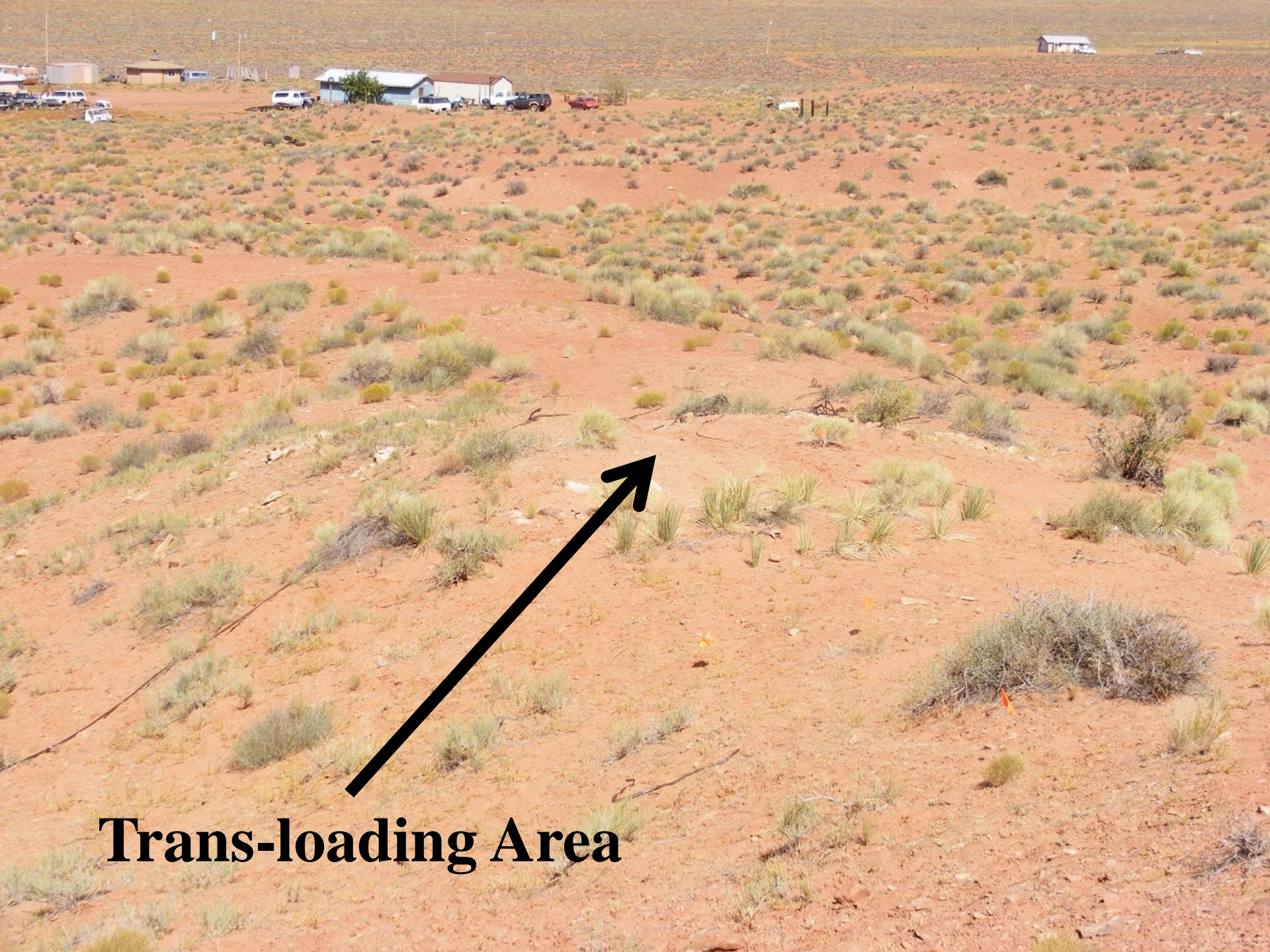
**Nearest Residences to Talus Slope**

Highway





**Steel cable gondola**



**Trans-loading Area**

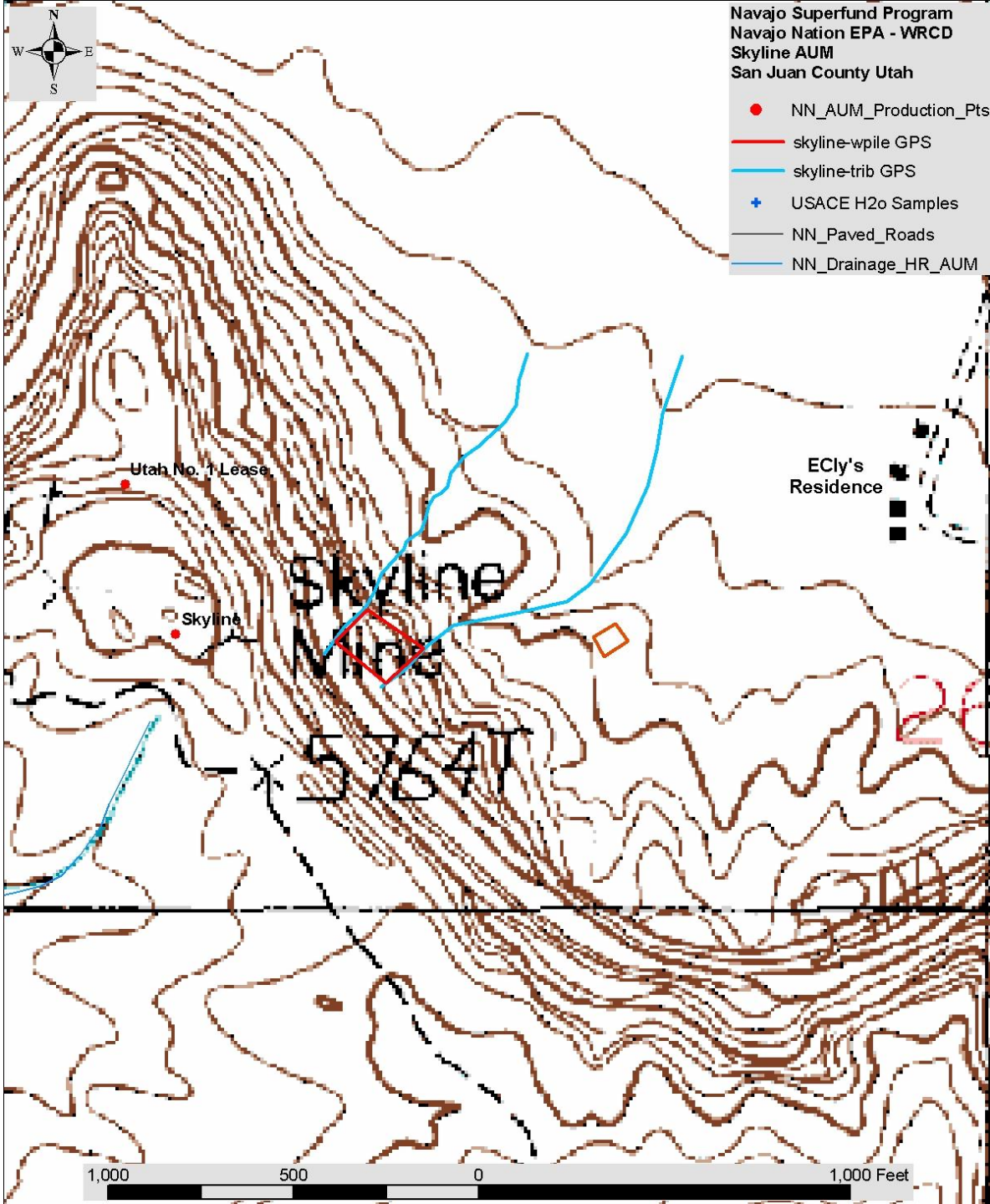


January 2001 Visit by U.S. Congress Representative Patrick J. Kennedy to Elsie Mae Begay residence



**July 2005 - Surface Grid Survey by NSP**





- Side drainages of talus/slope (**blue lines**)
- Contaminated soil (**red boxes**)
- Mined areas (**red dots**)
- Residences (**black boxes**)