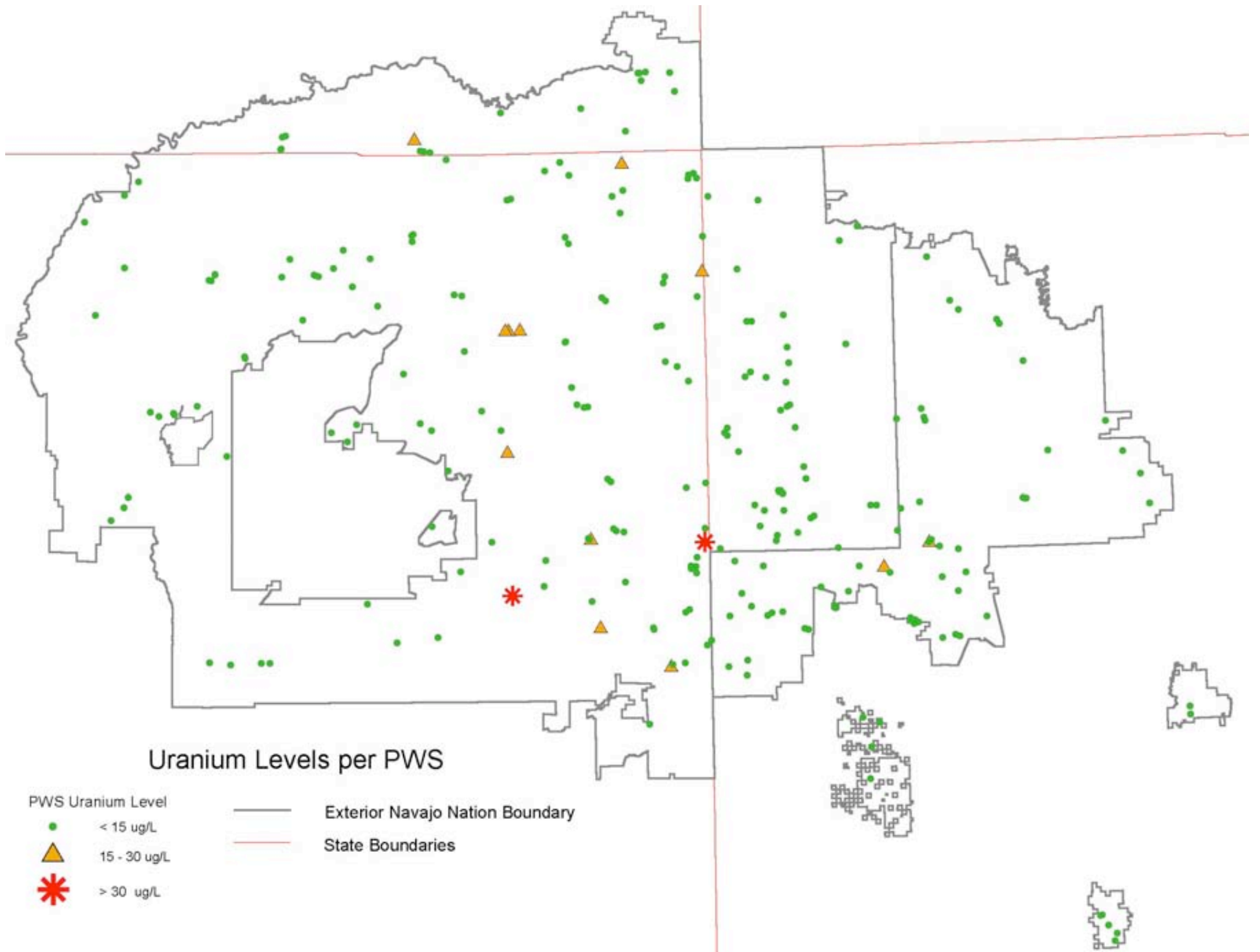
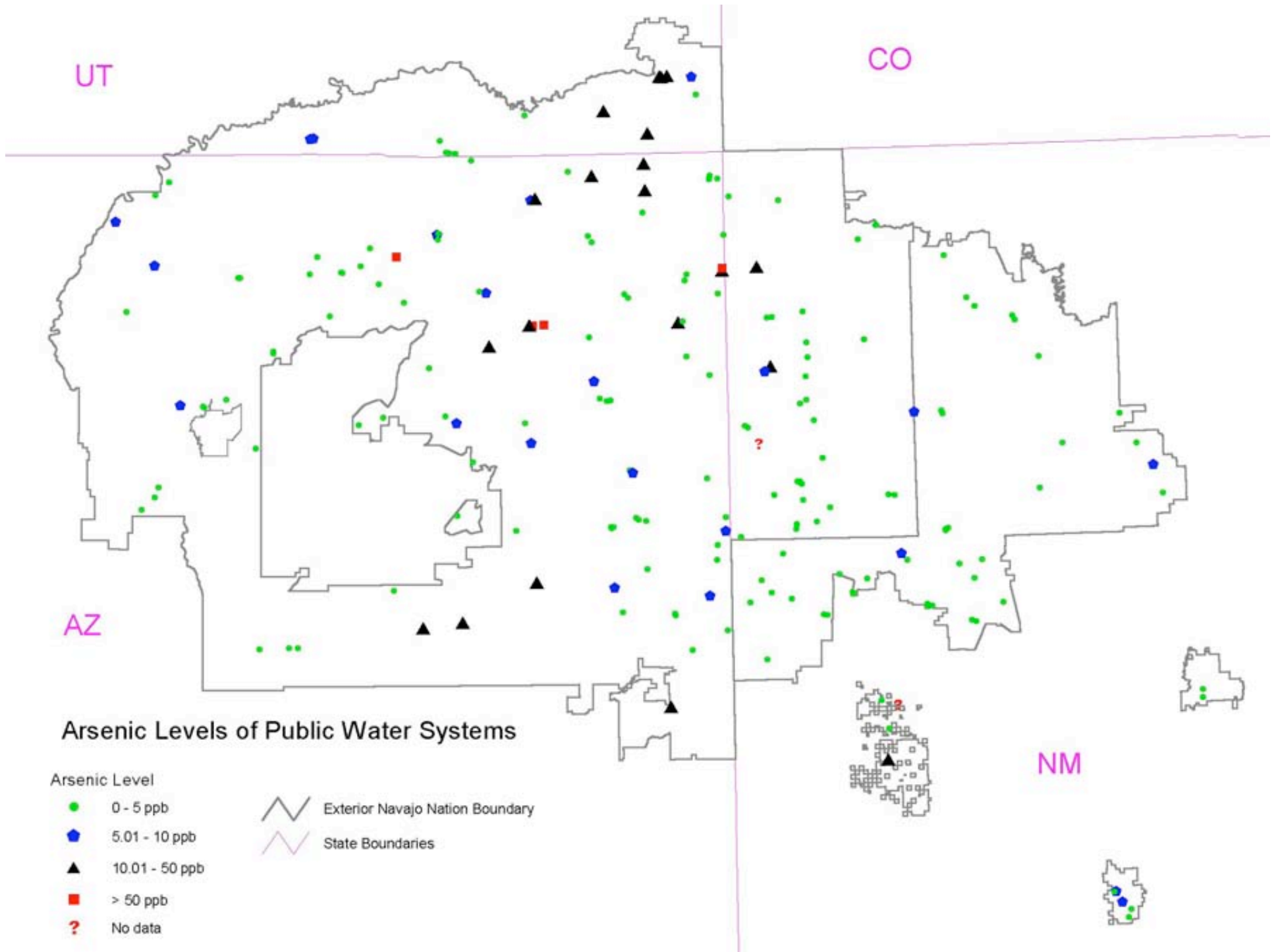


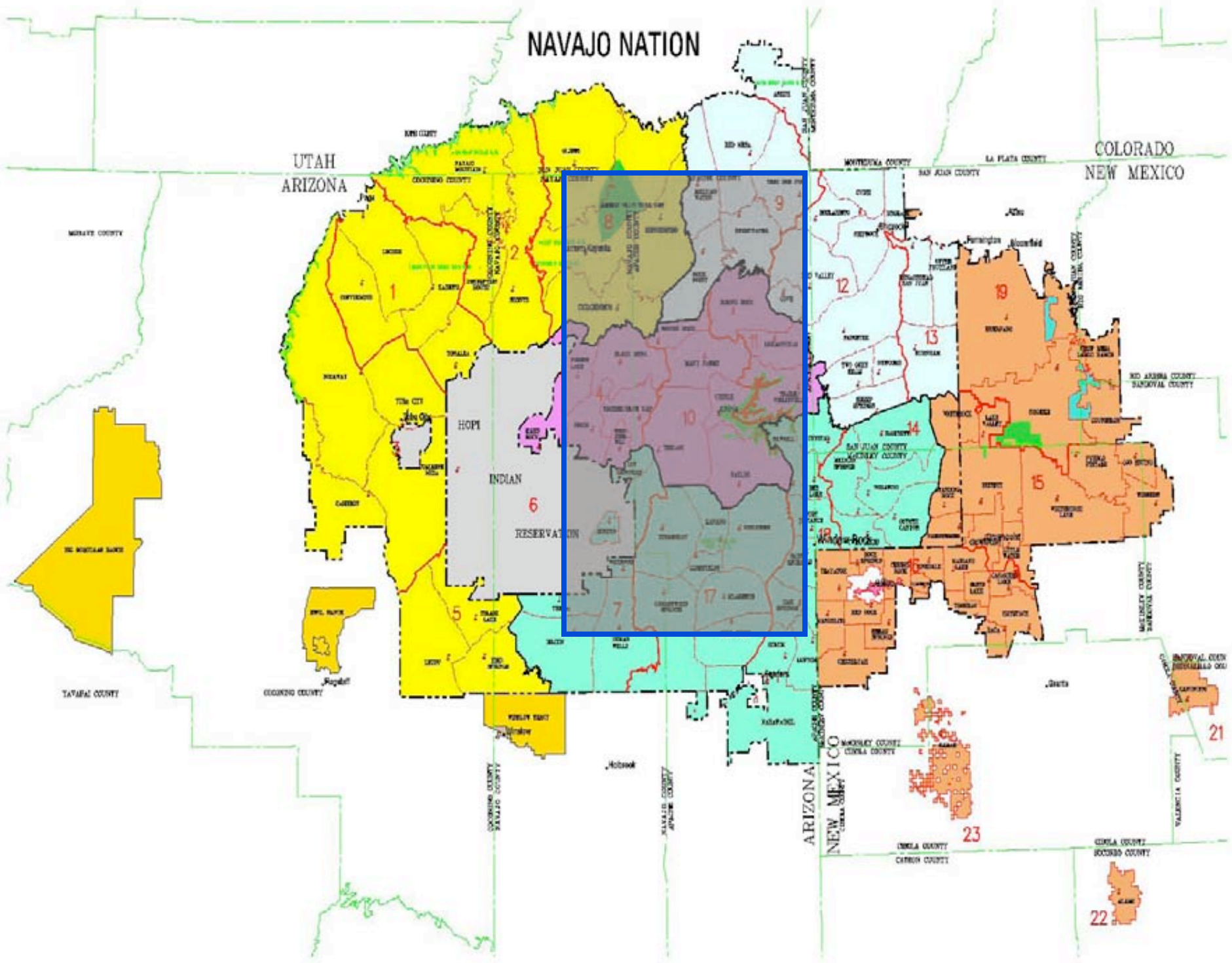
US EPA ARCHIVE DOCUMENT



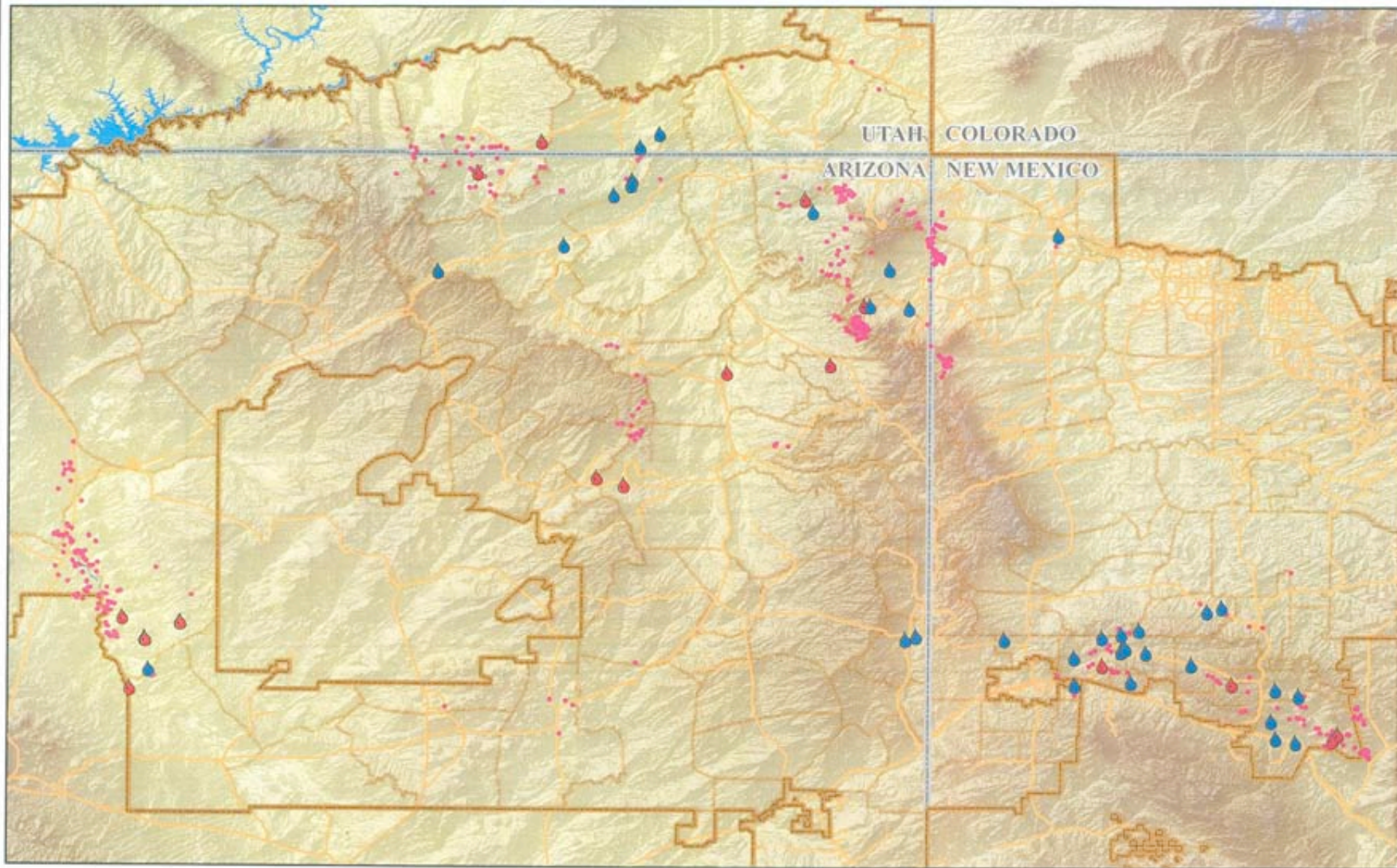
### Uranium Levels per PWS

- |  |   |
|--|---|
|  < 15 ug/L    |  Exterior Navajo Nation Boundary |
|  15 - 30 ug/L |  State Boundaries                |
|  > 30 ug/L    |   |





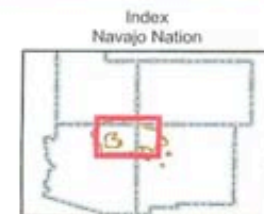


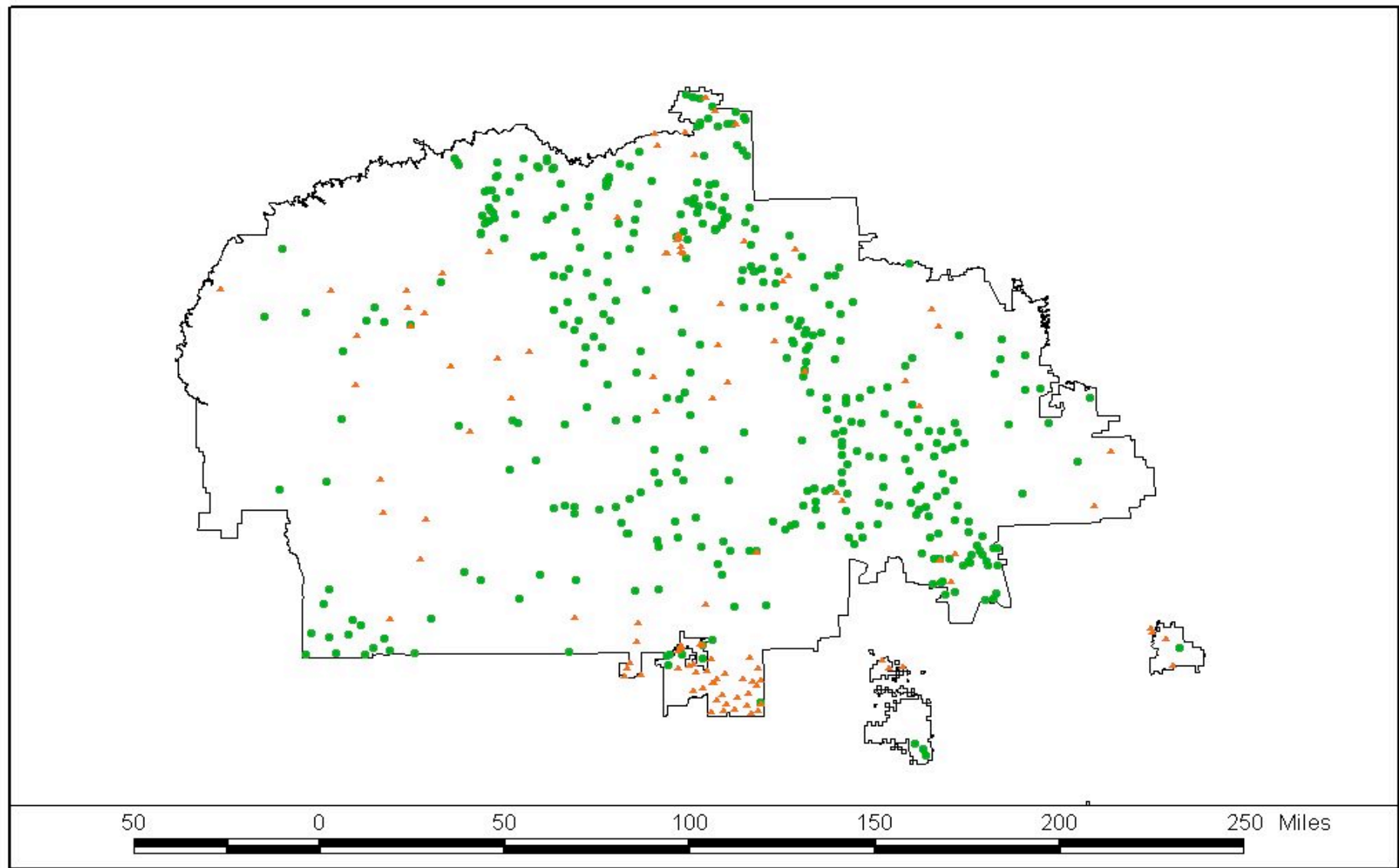


**Wells Sampled in 08**

- > MCL
- < MCL
- Abandoned Uranium Mines
- Navajo Nation Boundary
- Navajo Nation Chapters
- Paved Roads

**Navajo Nation  
Rural Water Well Samples  
Collected February/March 2008  
and Abandoned Uranium Mines**





LEGEND

- ▲ Livestock wells: status is unknown
- Livestock wells: status is active
- Navajo Nation boundary

WELL LOCATION MAP  
LIVESTOCK WELLS

NAVAJO NATION  
DEPARTMENT OF WATER RESOURCES  
WATER MANAGEMENT BRANCH





# Water Hauling on Navajo Nation







# Public Health Concerns Related to Water Hauling





## Watering Points In and Around the Navajo Nation.

Sources of water  
for the watering points  
are from regulated  
public water systems.

**Legend**

**Watering Points**

- ◆ non-NTUA source
- ▼ NTUA source
- State Boundary
- Chapters

Navajo Nation Environmental Protection Agency  
Public Water Systems Supervision Program  
August 01, 2008



