

US EPA ARCHIVE DOCUMENT

Skyline Mine



U.S. EPA R9 Superfund Program

Southwest Uranium Stakeholders Conference

September 15, 2010 Tuba City, AZ

Skyline Mine - Background

- ◆ Located on top of Oljato Mesa, approximately 1.5 miles northwest of Goulding's Lodge in Monument Valley, Utah.
- ◆ During late 1990's, the Navajo Abandoned Mine Abandoned Mine Land Reclamation Program (NAMLRP) addressed physical hazards and sealed the mine portals.

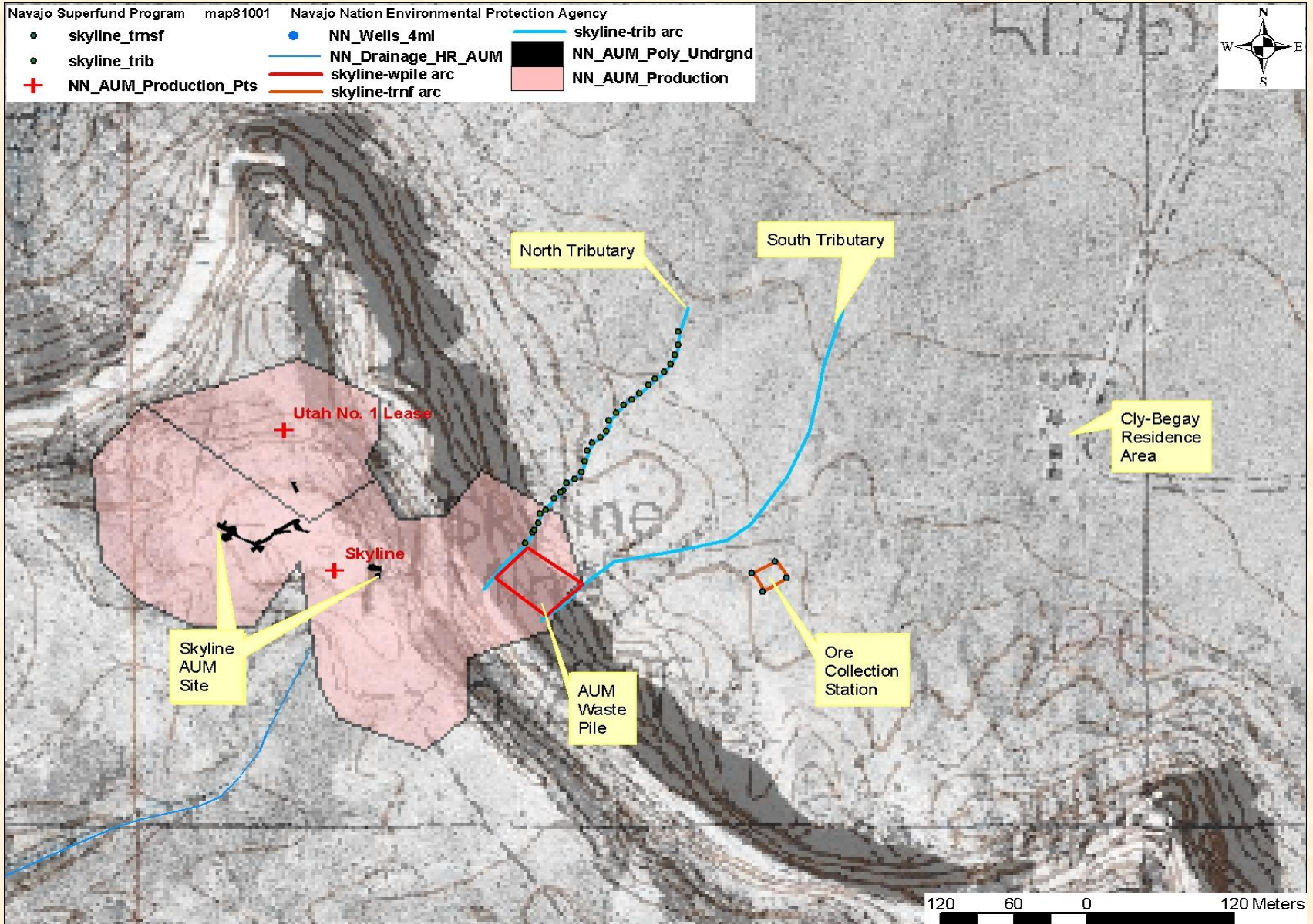


Skyline Mine

Skyline Mine – Background cont'd

- ◆ In July 2005, Navajo EPA conducted a Site Screen, and activity counts greater than 2 times background were detected in approximately 80 locations at the site.
- ◆ NNEPA requested assistance from U.S. EPA .
- ◆ In November, 2008 the U.S. EPA collected soil samples and performed surface gamma activity scans to further delineate the extent of the mine waste.

Aerial view and layout of Skyline Mine



Skyline Mine - Coordination

- ◆ In 2009 and 2010 U.S. EPA and Navajo EPA coordinated on additional data gathering efforts to further delineate the vertical and horizontal extent of uranium mine waste at the site.
- ◆ U.S. EPA and Navajo EPA also began working together with Navajo Abandoned Mine Lands reclamation Program (NAMLRP) and Oljato Chapter officials to begin the search for potential locations for an interim repository for the Skyline mine waste.

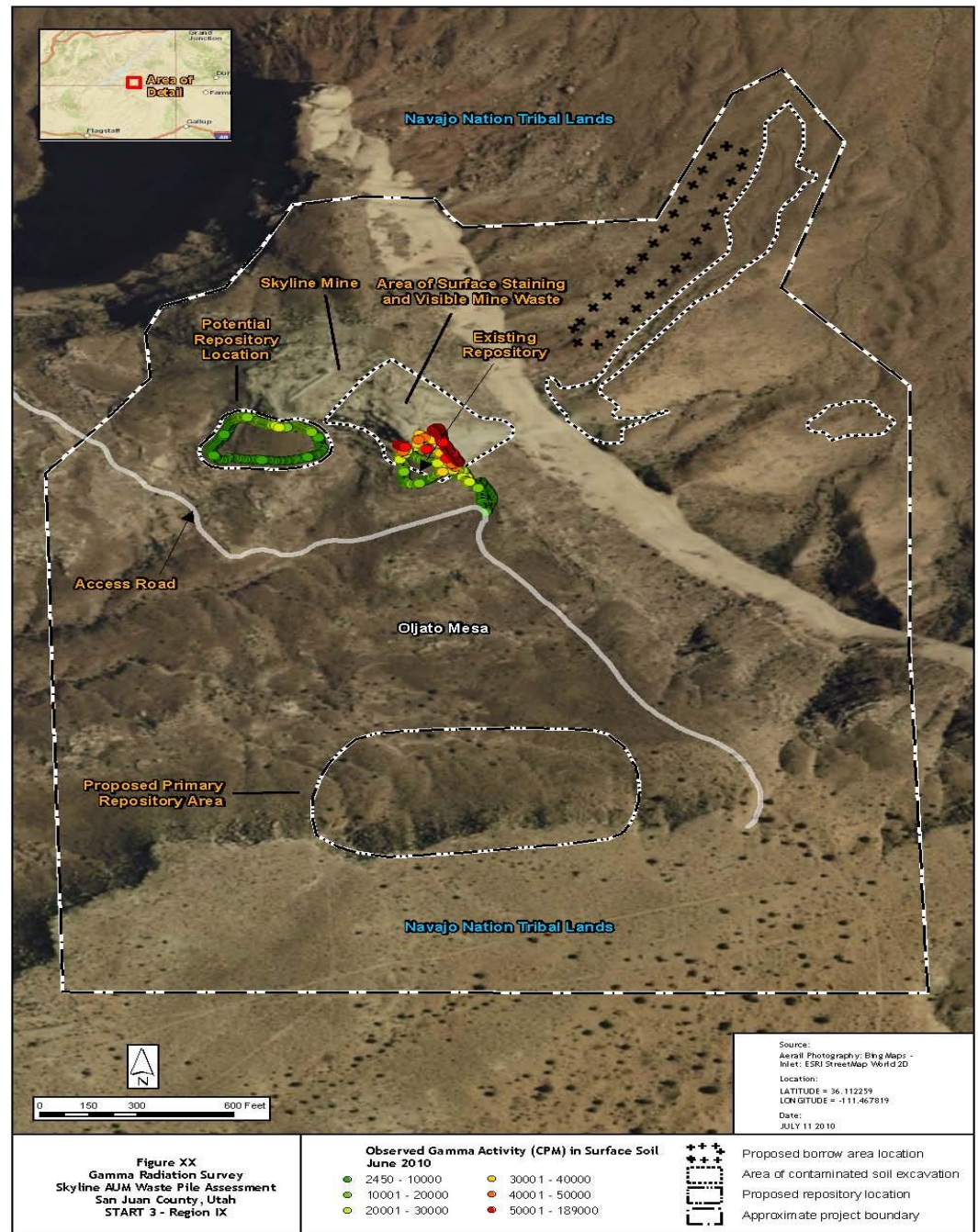
Skyline Mine – Update

- ◆ In April 2010 the USEPA and NNEPA made a presentation to a meeting of the Olajto Chapter to discuss:
 - ◆ The extent of the contamination from the mine waste, and
 - ◆ To begin discussions with the community on a proposed strategy to consolidate and sequester the mine waste at an interim repository located in the area of the mine.
- ◆ The Chapter passed a Resolution in support of the USEPA addressing the Skyline mine waste .
- ◆ The USEPA installed a fence around the contaminated mine waste and applied a fixative to control further migration of contaminated soil.

Skyline Mine – Location Proposal

- ◆ In June 2010 the USEPA and NNEPA conducted an informational meeting for Members of the Oljato Chapter to communicate the proposed actions designed to address the Skyline Mine waste.
- ◆ On August 8, USEPA attended an Oljato Chapter meeting to recommend that the most suitable location for the Skyline AUM waste material is on top of the Oljato Mesa near the original mine.
- ◆ There were no objections to this proposed location, and several Chapter Members spoke in support of proceeding with the plan for an interim repository next to the mine.

Aerial view of the Skyline AUM site showing the main areas and the proposed locations for the interim repository.



Skyline Mine – Next Steps

- ◆ USEPA and NNEPA will work with the Chapter to develop a formal resolution of support for the final location of the interim repository.
- ◆ USEPA is finalizing the Action Memo and as soon as the funding is allocated, U.S. EPA will follow up with the Chapter to discuss the next steps.
- ◆ USEPA may be able to begin improving the road from the south side of the Oljato Mesa to the top as soon as this Fall.

Contact Information

- ◆ Jason Musante, EPA On-Scene Coordinator
 - ◆ Musante.jason@epa.gov
 - ◆ 213.479.2120

- ◆ Svetlana Zenkin, EPA Community Involvement Coordinator
 - ◆ Zenkin.svetlana@epa.gov
 - ◆ (415) 972-3085