

US EPA ARCHIVE DOCUMENT

Community Responses to Abandoned Uranium Mine and Soil Clean-up Projects in the Red Water Pond Road Area, Coyote Canyon Chapter



Uranium Contamination Stakeholder Workshop

**September 14, 15, 16th
Moenkopi Legacy Inn & Suites
Tuba City, AZ**

by

Teddy Nez

Red Water Pond Road Community Association

(RWPRCA)

**Health and Environmental
Impacts of Uranium
Contamination
Red Water Pond Road
Community**

Living with Mine Waste

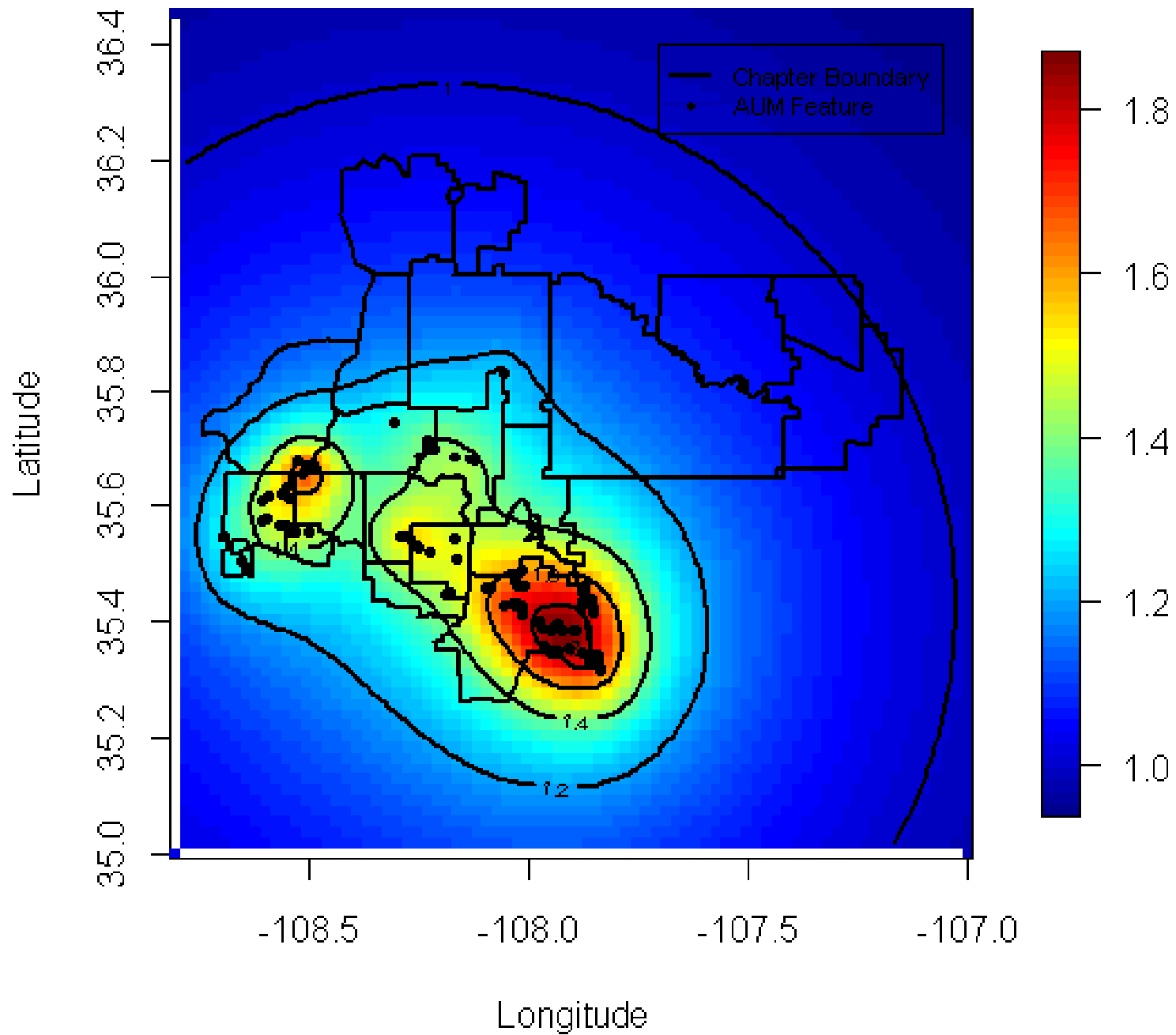
■ Environmental Impact

- Soil, Water, Air, Plants

■ Human Health Impact

- affected physically
- likelihood of kidney disease and the related diseases of diabetes and hypertension is significantly increased when living in proximity to abandoned uranium mine (AUM) features
- Tons of radioactive waste in our back yard, in our environment, which we regard as our source of food and spiritual nourishment

Hypertension



What is Uranium Contamination?

■ Environmental Contamination

- Soil, Water, Plants, Air
- Culture Value
- Traditional Value
- Scared Site
- Livestock

■ **Human Health Issue**

- affected physically
- likelihood of kidney disease and the related diseases of diabetes and hypertension is significantly increased when living in proximity to abandoned uranium mine (AUM) features
- Our community members with social impact
- PTSD, PTSS
- CTSS: Current Traumatic Stress Syndrome and
- CTSD: Current Traumatic Stress Disorder

■ **Future Generation**

How to address the Mine Waste

■ Off Site Removal

- Take the waste to a Federally Certified Repository by year 2012
- US EPA Announces Public Release of Engineering Evaluation and Cost Analysis (EE/CA) and Announcement of 30 – Day Public Comment Period and Public Meetings. June 2009.
 - Where is it? What happen to it?
- What is the Status within the 5-year plan?
- Rules/Regulation/Policies of Legacy of AUM and NEW mining

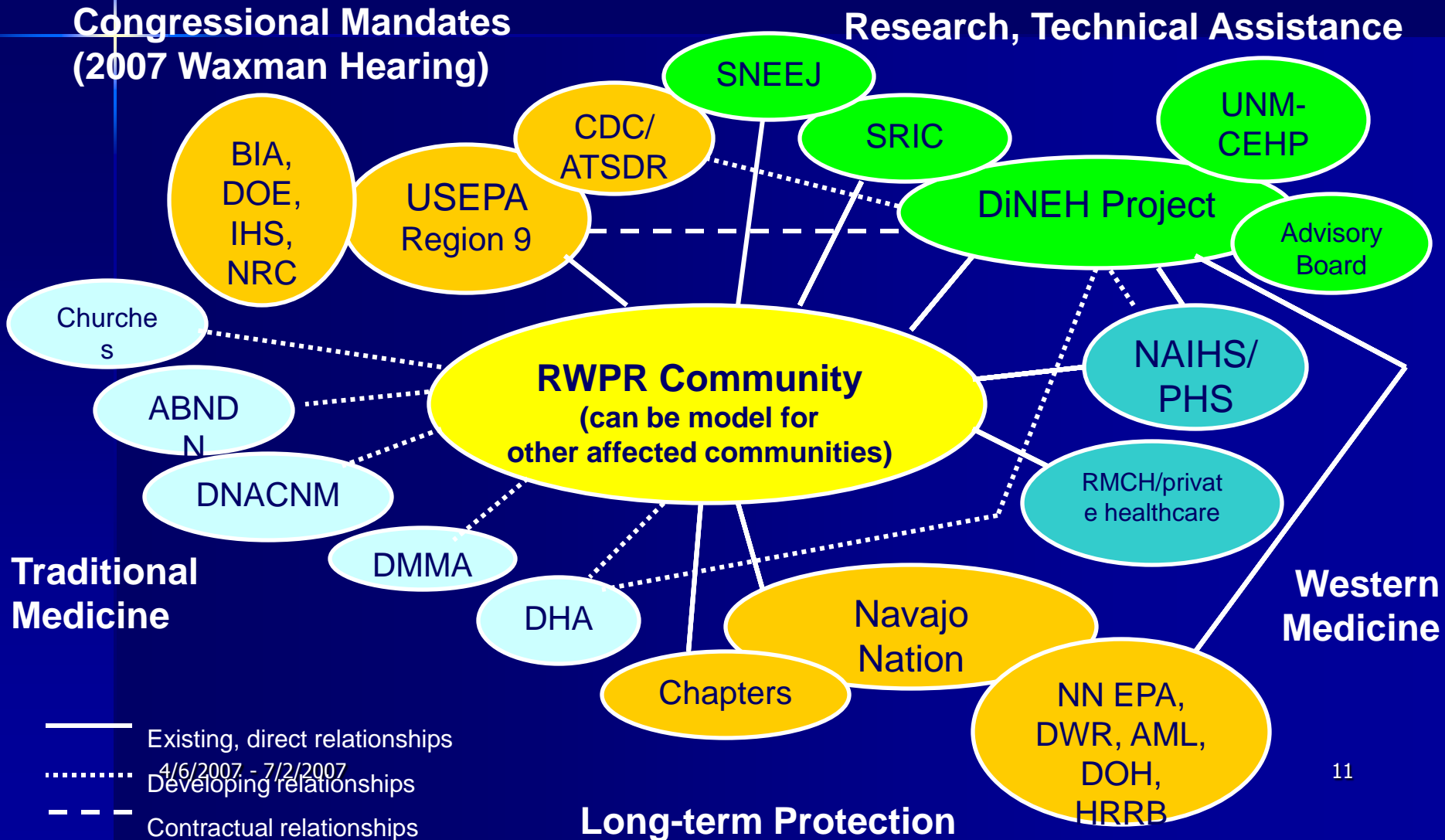
Comprehensive Human Health Study

- Diagnosis
- Treatment (**Western Medicine and Traditional Medicine**)
- Monitoring
- Symptoms – on going researches
- Prevention
- Future plans

- **National Health Care**
- **Environmental Restoration**
 - Soil, Water, Plants, Air
 - Scared Site
 - Culture Value
 - Livestock
- **Report Backup**
 - 6 Month and Yearly
- **Post Monitoring after Restoration**
 - Environment
 - Human Health
 - Livestock
- **We asked for Long-term Protection**

Model of Responses to Community Concerns About Health and Environmental Effects of Uranium Legacy

Diagnosis, Treatment and Medical Monitoring from Western and Traditional Perspectives



RESEARCH QUESTIONS:

- 1) Where does uranium exist
- 2) How does it move through arroyos and into the environment?





09.22.2009

Home Sites

Kerr-McGee

13

14

11

12

1

2

3

5

4

Home Sites

6

7

8

9

10

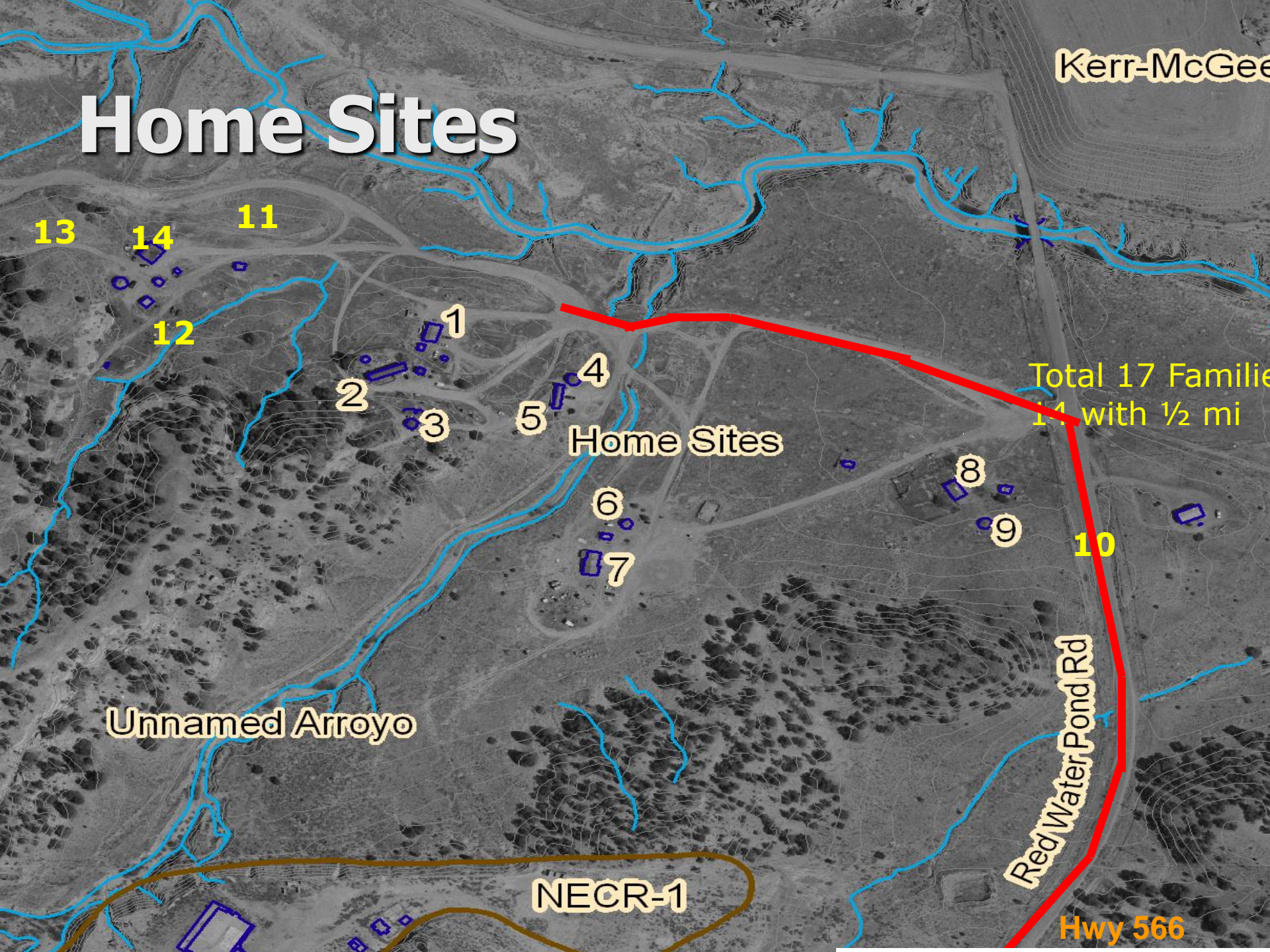
Total 17 Families
14 with 1/2 mi

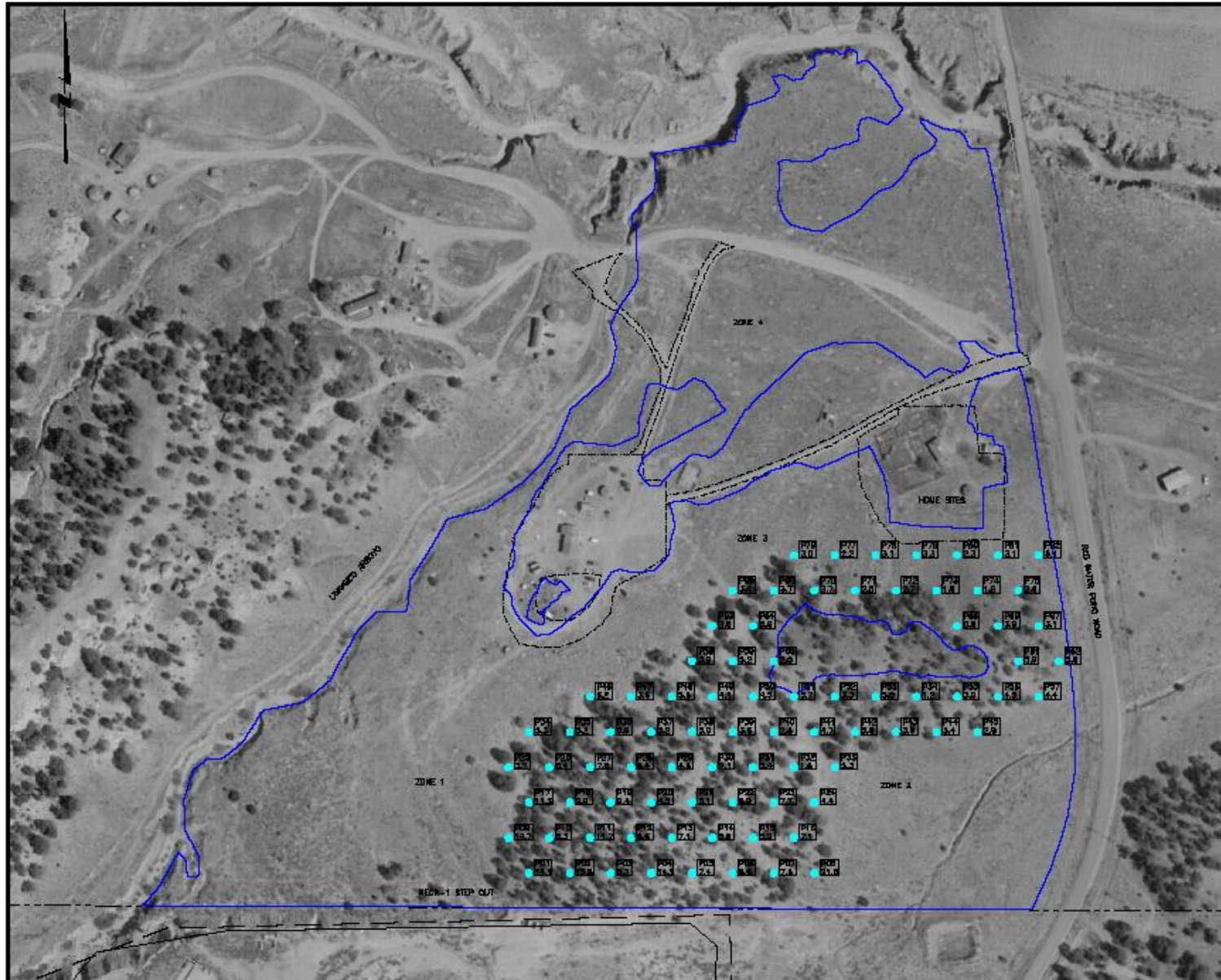
Unnamed Arroyo

NECR-1

Red Water Pond Rd

Hwy 566





LEGEND:

- PERMIT BOUNDARY
- - - - FACILITY BOUNDARY
- O&P BOUNDARY
- - - - APPROXIMATE ORIGINAL BOUNDARY
- STEP CUT AREA EXPANSION SUBJECT
- STATIC CAMERA LOCATION



A	DWIT	GW	27 08/22/2008
		TSH	ENG ENG

DESIGNER'S RESPONSIBILITY:
 THE DESIGNER HAS REVIEWED THE PROJECT AND HAS FOUND IT TO BE IN ACCORDANCE WITH THE REQUIREMENTS OF THE PERMIT. THE DESIGNER HAS REVIEWED THE PROJECT AND HAS FOUND IT TO BE IN ACCORDANCE WITH THE REQUIREMENTS OF THE PERMIT. THE DESIGNER HAS REVIEWED THE PROJECT AND HAS FOUND IT TO BE IN ACCORDANCE WITH THE REQUIREMENTS OF THE PERMIT.

DESIGNED BY	J. TRIMMER	08/22/2008
DRAWN BY	D. FOLLE	08/22/2008
CHECKED BY	J. TRIMMER	08/22/2008
APPROVED BY	J. TRIMMER	08/22/2008
PROJECT MANAGER	T. LEBER	08/22/2008
CLIENT APPROVAL		
CLIENT REFERENCE NO.		



PROJECT OWNER	NORTH-EAST CHURCH ROCK MINE
PROJECT	INTERIM REMOVAL ACTION CONSTRUCTION PLAN
TITLE	REMOVAL BOUNDARY SURVEY



Tires are Scanned but not the KIDs



09.08.2009



10.20.2009



10.20.2009



10.09.2009

Information

more Assessments of soil, water & air

RELOCATION / ALTERNATIVE FOR THE FAMILIES THAT WANT TO RELOCATE

Legal Actions

Community Awareness through Capacity Building

RTE this Big 5-words

MORE TESTING

more testing - environmental

COVER --

Relocate site to safer environs

Medical

Neurological

Go to safe ground

More Education for These Kids Don't Wreck the House of them

replace water system installed by the Army, DOD and Army etc. Lead-free and water nearby

Safe drinking water

P.R. Public Relation

MORATORIUM INDEFINITE 22

NO 15 600

INFRA STRUCTURE

Safety

conquer to get the word out to the world... MORE EDUCATION IS MORE PEOPLE TOA MOWER

No More Uranium NO MINING CO. PERMITS

WANT TO GROW MY OWN GARDEN

want to be able to garden again

RETURN OUR NATIVE HERES

want to be able to play in the dirt again

I WANT TO PLAY IN THE DIRT

INFRASTRUCTURE Road, water, irrigation, etc.

DRUGS, ALCOHOL, GAMING, RESTORATION

UNREGULATED LINES etc

Restarting

01.23.2008

**URANIUM LEGACY
REMEMBRANCE
AND ACTION DAY**





