

US EPA ARCHIVE DOCUMENT



UNITED STATES ENVIRONMENTAL PROTECTION AGENCY

REGION 5
77 WEST JACKSON BOULEVARD
CHICAGO, IL 60604-3590

COPY

JAN 14 2008

REPLY TO THE ATTENTION OF MAILCODE:
WU-16J

CERTIFIED MAIL 7001 0320 0006 0186 8251
RETURN RECEIPT REQUESTED

Victoria Raske
Tribal Historic Preservation Officer
Grand Portage Band of Chippewa
P.O. Box 428
Grand Portage, Minnesota 55605

**Re: National Historic Preservation Act Compliance
Kennecott Eagle Minerals Company; Eagle Mine Project; Marquette County,
Michigan; U.S. EPA Permit Application Number MI-103-5W20-0002**

Dear Ms. Raske:

The U.S. Environmental Protection Agency (EPA) is in the process of reviewing a permit application and all related material in order to prepare a draft federal Underground Injection Control permit decision for the underground discharge of treated industrial waste water. This discharge system is proposed to be part of the above referenced project that is shown on the enclosed maps. The purpose of this letter is to request information about any potential traditional cultural or historical properties that may be eligible for protection under the National Historic Preservation Act of 1966 that are located within the project area.

The Keweenaw Bay Indian Community's (KBIC) Tribal Historic Preservation Officer has indicated that there may be traditional cultural properties in the proposed project area that are relevant to the Ojibwa Nation. EPA has agreed to consult with KBIC about this issue. We would like to know if your Band has a traditional religious or cultural significance attached to a historic property that may be affected by the project and therefore would be interested in consultation with EPA.

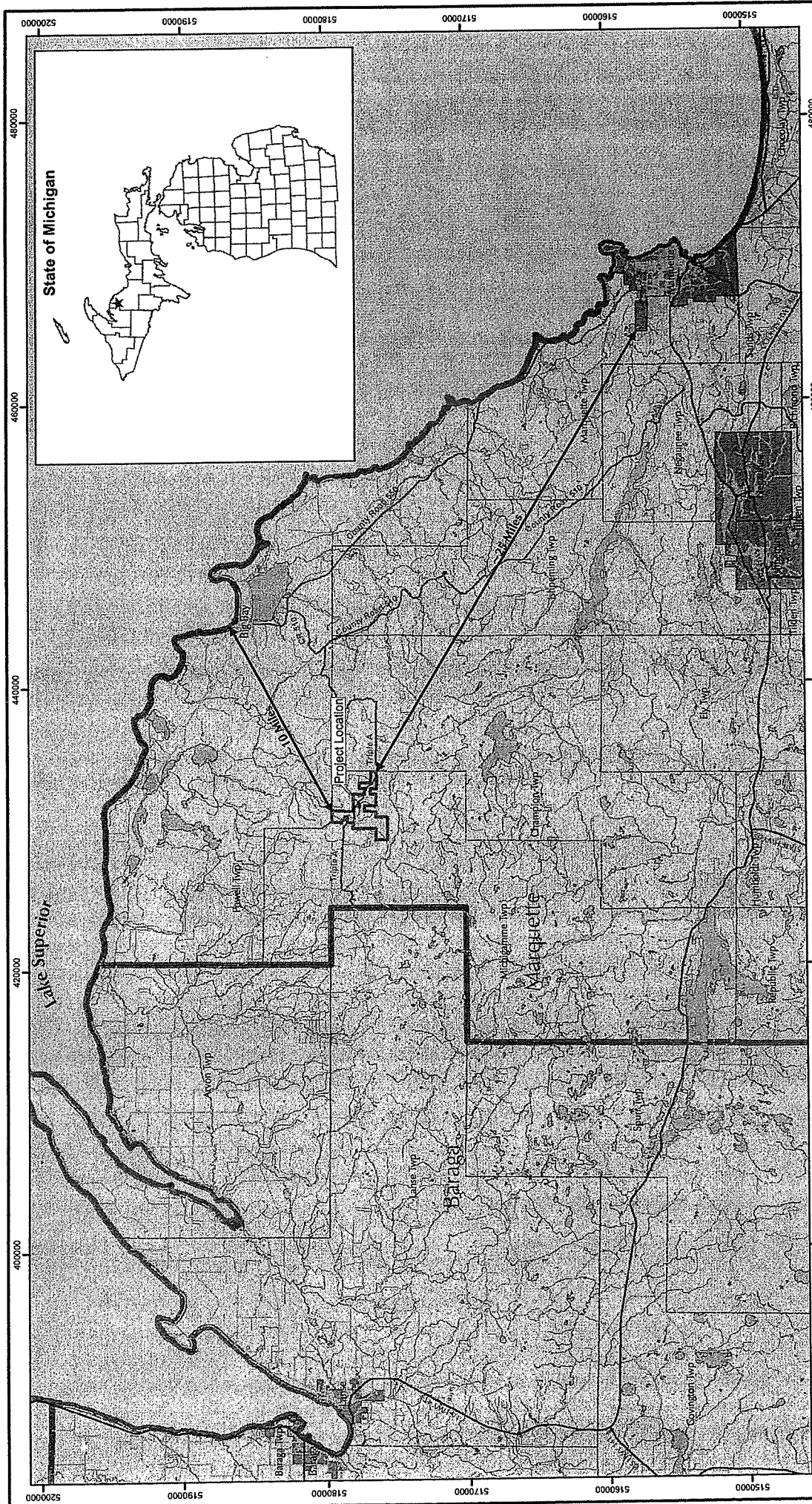
Please contact me within 30 days if you may have any information to satisfy this request. If you have any questions or concerns please feel free to contact me or Ross Micham of my staff at (312) 886-4237, or by email at micham.ross@epa.gov.

Sincerely yours,

A handwritten signature in cursive that reads "Tinka G. Hyde" with "FOR" written below it.

Tinka G. Hyde
Acting Director, Water Division

Enclosures



State of Michigan



Kennecott
Eagle Minerals

FIGURE 2-1
PROJECT LOCATION

REVISED	DATE	BY	DESCRIPTION

CHECKED BY:	JOS1	DATE:	FEB. 08
APPROVED BY:	SVD1	DATE:	FEB. 08
APPROVED BY:		DATE:	

Foth & Van Dyke

Scale: 1" = 2 Miles

DATE: FEBRUARY, 2008

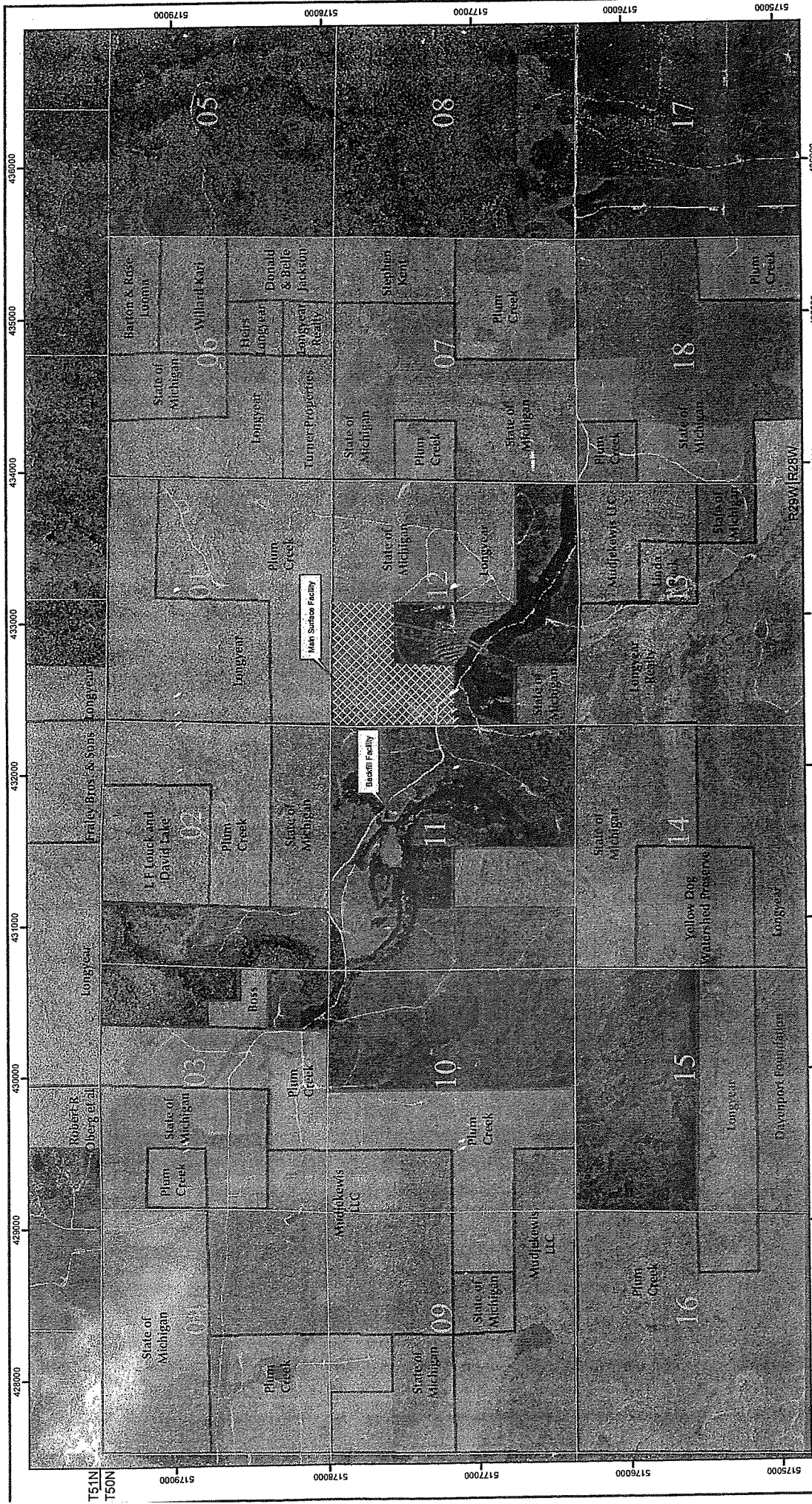
Prepared by: **Foth & Van Dyke** By: DAT 04WV18

LEGEND

	Counties
	Highways
	Major Roads
	Minor Roads
	Minor Civil Divisions
	Kennecott Surface Ownership
	Lakes and Rivers

N

- NOTES**
1. Surface property boundary as of November 18, 2004 supplied by Kennecott Via Goldier & Associates Inc., August, 2005.
 2. Horizontal datum based on NAD 83/94.
 3. All base information downloaded from Michigan Center of Geographic Information (<http://www.michigan.gov/cgi>).
 4. Site Location - Project Site within Sections 11 & 12, T50N, R29W, Town of Marquette, Marquette County, Michigan.



NOTES

1. Surface Rights Boundary, Ore Body and Orthorectomy supplied by Kennecott via Gaskoy Associates Inc., August, 2005.
2. Horizontal datum based on NAD 83/94.
3. Property ownership based on UTM Zone 16.
4. Site Localizer - Project Site within Sections 11 & 12, T50N, R29W, Town of Michiganame, Marquette County, Michigan.

LEGEND

- Eagle Ore Body
- Location of Surface Facilities
- Kennecott Surface Ownership
- Section Lines
- State Leased Area

Kenecott
Eagle Minerals

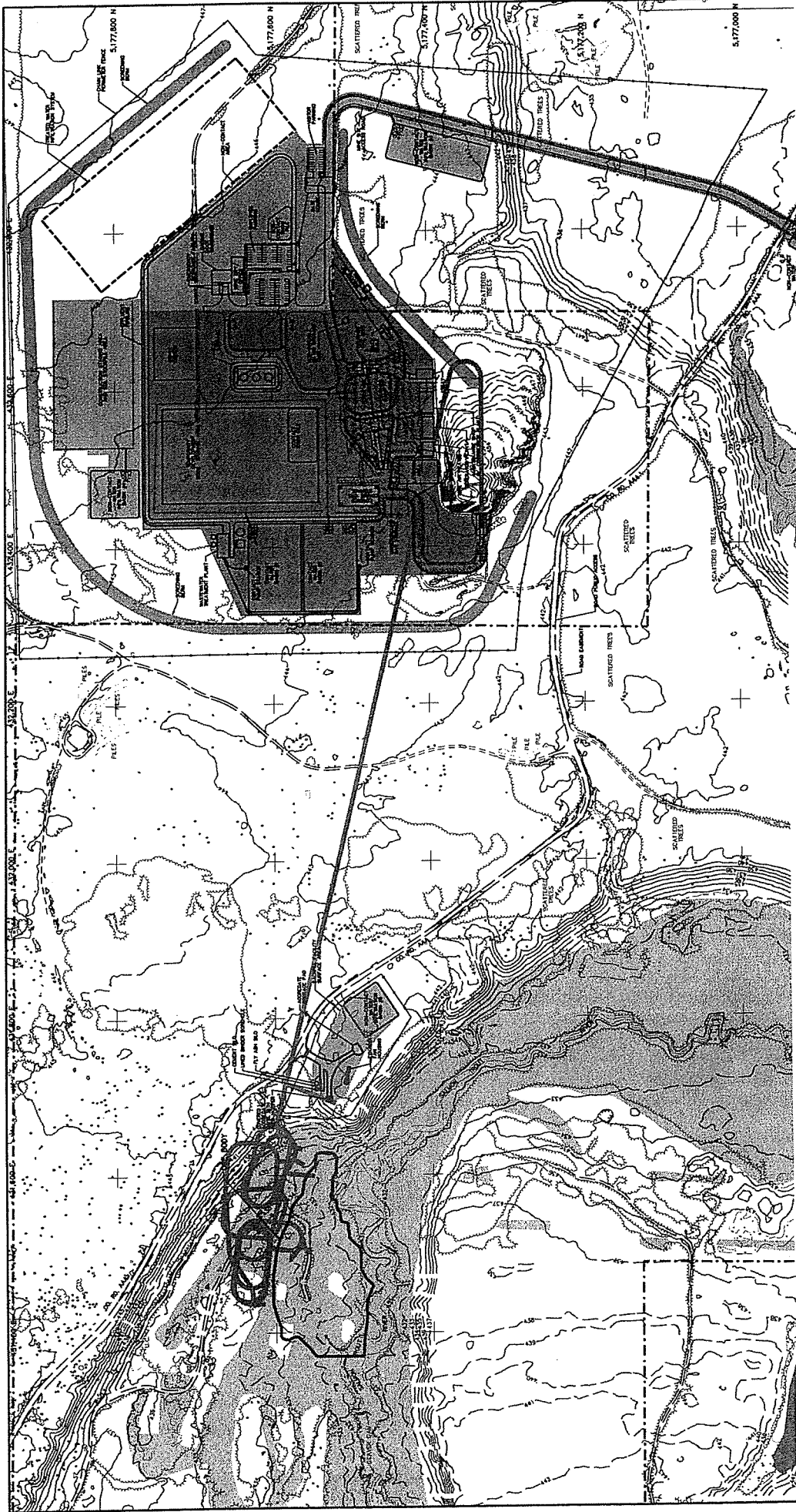
FIGURE 2-4
PROJECT SURFACE OWNERSHIP

Prepared by: Foth & Van Dyke Date: FEBRUARY, 2008

REVISED	DATE	BY	DESCRIPTION

CHECKED BY: JOSJ DATE: FEB. 08
 APPROVED BY: SVDJ DATE: FEB. 08

Foth & Van Dyke



NOTES:

1. SHEDDING, WETLAND, AND DIMENSIONING DATA SUPPLIED BY AERO-METRIC ENGINEERING, INC. DATE OF PHOTOGRAPHY: JUNE 7, 2006.
2. THE PLAN DATA AREA ADAPTED FROM MONITOR ENGINEERING, INC. SURFACE WETLANDS AND WETLANDS, INC. DATE: APRIL 7, 2006.
3. SURFACE PROPERTY BOUNDARY AS OF NOVEMBER 14, 2004.
4. CONTOUR INTERVAL BASED ON NORTH AMERICAN VERTICAL DATUM OF 1988. HORIZONTAL COORDINATES ADAPTED ON JULY 28, '14.
5. ORE BODY, WETLAND BOUNDARY, EXCESS SOIL BOTTOM, DRAINAGE DITCH, AND PLANNING FENCE SUPPLIED BY GOLDER & ASSOCIATES, INC. AUGUST 1, 2006.
6. THE LOCATION, SHAPE, SIZE, AND SECTION OF THE ORE BODY, WETLAND, PLANNING FENCE, AND ACCESS ROAD APPROXIMATE IN THIS MAP.

LEGEND

EXISTING ELEV. CONTOUR (1 METER INTERVAL)	ORE BODY
PAVED ROAD	CULVERT
TREE LINE	EROSION MAT OR REPAIR
WETLAND BOUNDARY AS OF NOVEMBER 14, 2004	DRAINAGE DITCH AND FLOW DIRECTION
PROPERTY BOUNDARY AS OF APRIL 7, 2006	EXCESS SOIL BOTTOM (FINAL LOCATION AND SIZE BASED UPON ACTUAL EXCAVATED SOIL QUANTITIES)
NON-CONTACT AREA	NON-CONTACT AREA
PLANNING FENCE	MAIN OPERATIONS AREA
ACCESS ROAD	CONTIGUOUS LINED OPERATIONS AREA
	WETLAND ADAPTED FROM US FISH AND WILDLIFE WETLAND INVENTORY MAP

FIGURE 4-2
SITE DEVELOPMENT PLAN AND TOPOGRAPHIC MAP

Kennecott Eagle Minerals

Foth & Van Dyke

REVISED	DATE	BY	DESCRIPTION
CHECKED BY:	JOSI	DATE:	FEB. '06
APPROVED BY:	SVID	DATE:	FEB. '06
APPROVED BY:		DATE:	

Prepared By: Foth & Van Dyke | By: C.G.B. | 04H01B