

US EPA ARCHIVE DOCUMENT



UNITED STATES ENVIRONMENTAL PROTECTION AGENCY

REGION 5  
77 WEST JACKSON BOULEVARD  
CHICAGO, IL 60604-3590

OCT 31 2007

REPLY TO THE ATTENTION OF MAILCODE :  
WU-16J

CERTIFIED MAIL 7001 0320 0006 1459 0941  
RETURN RECEIPT REQUESTED

giiwegiizhigookway Martin  
Cultural Historic Preservation Officer  
Lac Vieux Desert Band of Lake Superior Chippewa Indians  
P.O. Box 249  
Watersmeet, Michigan 49969

**Re: National Historic Preservation Act Compliance  
Kennecott Eagle Minerals Company; Eagle Mine Project; Marquette County,  
Michigan; U.S. EPA Permit Application Number MI-103-5W20-0002**

Dear Ms. Martin:

The U.S. Environmental Protection Agency (EPA) is in the process of reviewing a permit application and all related material in order to prepare a draft federal Underground Injection Control permit decision for the underground discharge of treated industrial waste water. This discharge system is proposed to be part of the above referenced project that is shown on the enclosed maps. The purpose of this letter is to request information about any potential traditional cultural or historical properties that may be eligible for protection under the National Historic Preservation Act of 1966 that are located within the project area.

The Keweenaw Bay Indian Community's (KBIC) Tribal Historic Preservation Officer has indicated that there may be traditional cultural properties in the proposed project area that are relevant to the Ojibwa Nation. EPA has agreed to consult with KBIC about this issue. We would like to know if your Band has a traditional religious or cultural significance attached to a historic property that may be affected by the project and therefore would be interested in consultation with EPA.

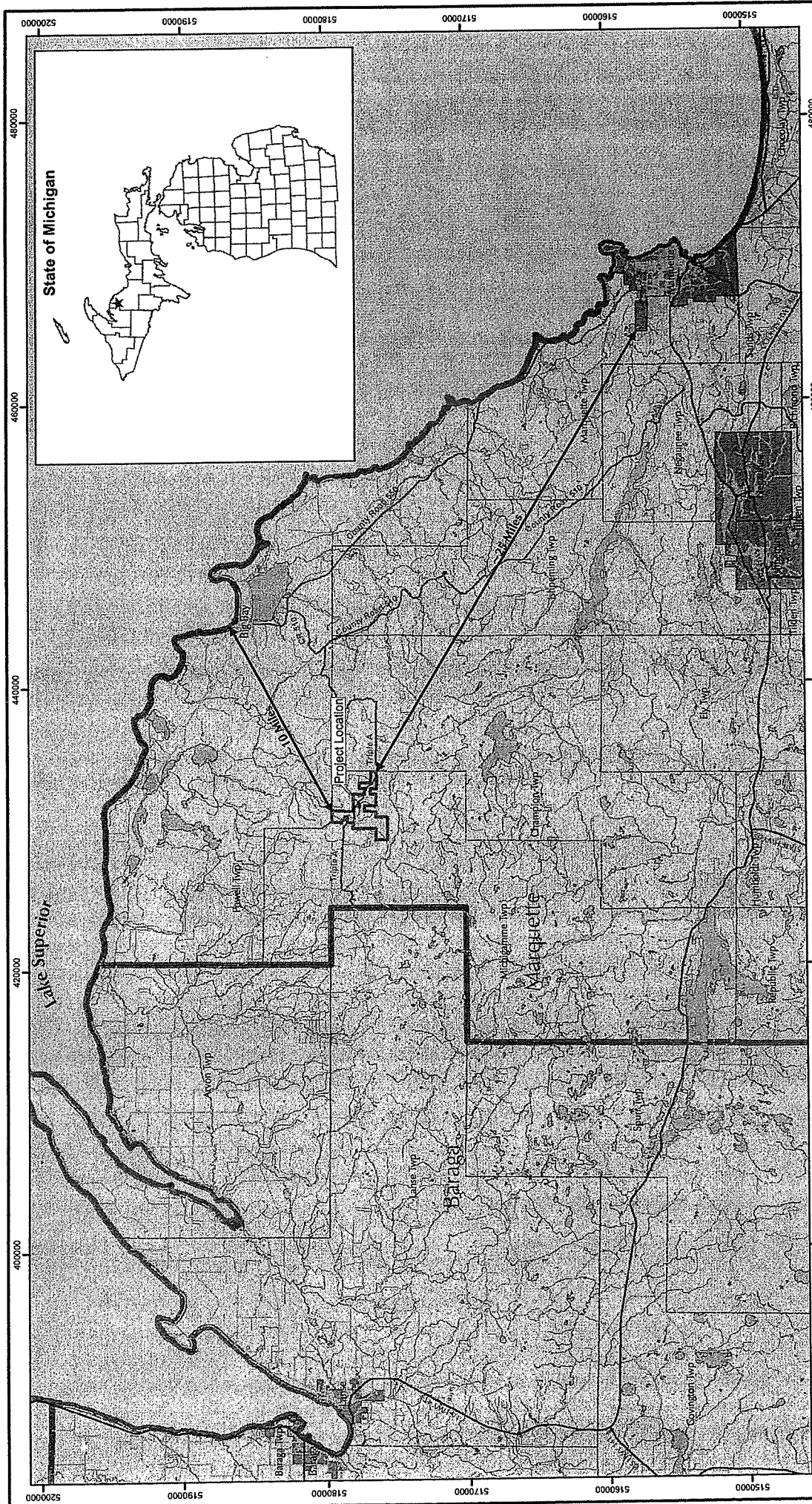
Please contact me within 30 days if you may have any information to satisfy this request. If you have any questions or concerns please feel free to contact me or Ross Micham of my staff at (312) 886-4237, or by email at [micham.ross@epa.gov](mailto:micham.ross@epa.gov).

Sincerely yours,

Robert D. Tolpa  
Acting Director, Water Division

Enclosures

cc: Ann McCammon Soltis, Great Lakes Indian Fish & Wildlife Commission



State of Michigan



**Kennebecott**  
Eagle Minerals

**FIGURE 2-1**  
PROJECT LOCATION

Scale: 1" = 1 Mile

DATE: FEB. 08  
DATE: FEB. 08

APPROVED BY: JOST  
APPROVED BY: SVD1

Prepared by: Foth & Van Dyke  
By: DAT

REVISED	DATE	BY	DESCRIPTION

DATE	BY	DESCRIPTION

DATE	BY	DESCRIPTION

DATE	BY	DESCRIPTION

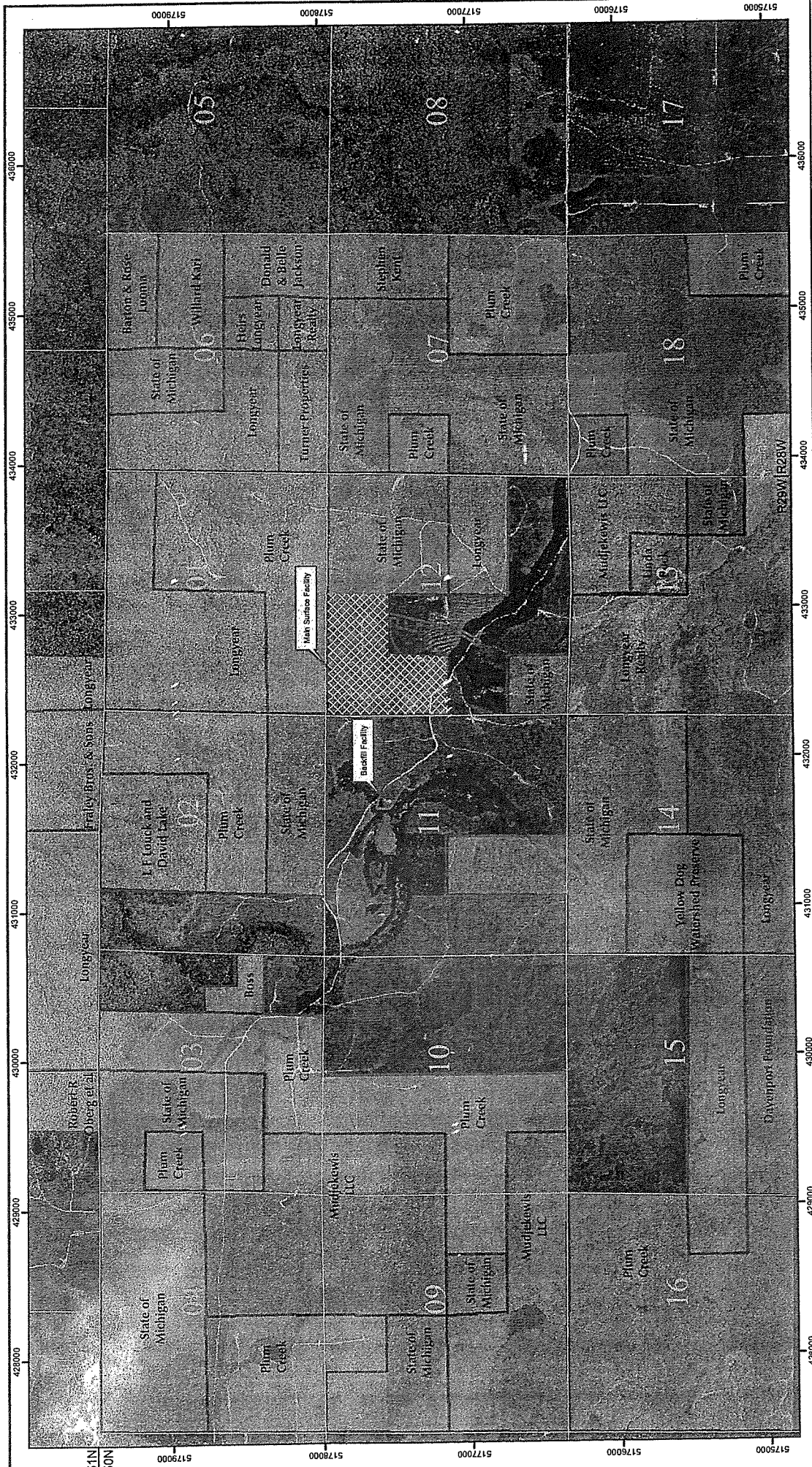
**LEGEND**

- Counties
- Minor Civil Divisions
- Kennebecott Surface Ownership
- Lakes and Rivers
- Highways
  - Major Roads
  - Minor Roads

**NOTES**

1. Surface property boundary as of November 18, 2004 supplied by Kennebecott Via Goldier & Associates Inc., August, 2005.
2. Horizontal datum based on NAD 83/94.
3. All base information downloaded from Michigan Center of Geographic Information (<http://www.michigan.gov/cgi>).
4. Site Location - Project Site within Sections 11 & 12, T50N, R29W, Town of Marquette, Marquette County, Michigan.





**NOTES**

1. Surface Rights Boundary, Ore Body and Orthorectography supplied by Kennecott via Gaskoy Associates Inc., August, 2005.
2. Horizontal datum based on NAD 83/94.
3. Property Ownership supplied from Kennecott and Callman Engineering
4. Site Locator - Project Site within Sections 11 & 12, T50N, R29W, Town of Michiganame, Marquette County, Michigan.

**LEGEND**

- Eagle Ore Body
- Location of Surface Facilities
- Kennecott Surface Ownership
- Section Lines
- State Leased Area

**Kennecott**  
Eagle Minerals

**FIGURE 2-4**  
PROJECT SURFACE OWNERSHIP

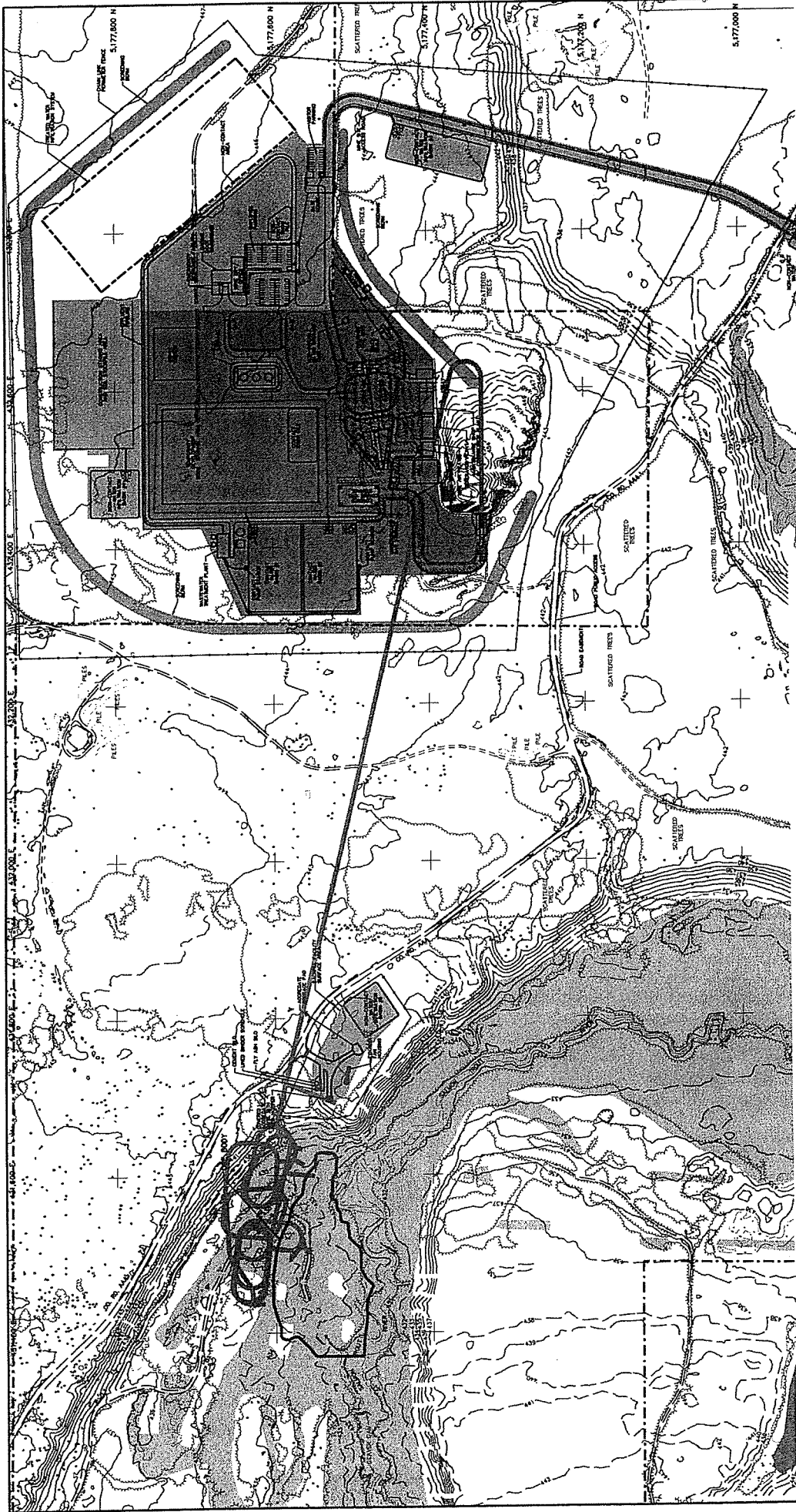
REVISED	DATE	BY	DESCRIPTION

CHECKED BY: J051 DATE: FEB. 08  
APPROVED BY: SVD1 DATE: FEB. 08

Prepared by: Foth & Van Dyke     By: DAT  
Scale: 1" = 300'     Date: FEBRUARY, 2009     DWG# 018

**Foth & Van Dyke**

K:\enough\mmd\project\enough\_2-4\_11x17.mxd     January 26, 2008



**NOTES:**

1. SHEDDING, WETLAND, AND DIMENSIONAL DATA SUPPLIED BY ARCHITECTS CONCERNING.
2. THE FINAL DATA AREA ADAPTED FROM MONITOR ENGINEERING, INC.
3. SURFACE WETLANDS AND WETLANDS ADAPTED FROM MONITOR ENGINEERING, INC. APRIL 7, 2006.
4. CONTOUR INTERVAL BASED ON NORTH AMERICAN VERTICAL DATUM OF 1988. HORIZONTAL COORDINATES BASED ON NAD 83 DATUM.
5. ORE BODY, WETLAND BOUNDARY, EXCESS SOIL BOTTOM, DRAINAGE DITCH, AND ACCESS ROAD SUPPLIED BY GOLDBERG & ASSOCIATES, INC. AUGUST 2005.
6. THE LOCATION, SHAPE, SIZE, AND DIMENSIONS OF THE ORE BODY, WETLAND BOUNDARY, DRAINAGE DITCH, AND ACCESS ROAD ARE APPROXIMATE.

**LEGEND**

EXISTING ELEV. CONTOUR (1 METER INTERVAL)	ORE BODY
IMPROVED ROAD	CULVERT
TREE LINE	EROSION MAT OR REPAIR
WETLAND BOUNDARY AS OF NOVEMBER 14, 2004	DRAINAGE DITCH AND FLOW DIRECTION
WETLAND BOUNDARY AS OF APRIL 7, 2006	EXCESS SOIL BOTTOM (FINAL LOCATION AND SIZE BASED UPON ACTUAL EXCAVATED SOIL QUANTITIES)
MONITOR ENGINEERING PROPERTY BOUNDARY	NON-CONTACT AREA
MONITOR ENGINEERING WETLAND BOUNDARY	MAIN OPERATIONS AREA
PLANNING SYSTEM	DISCONTINUOUS LINED OPERATIONS AREA
PERIMETER FENCE	WETLANDS ADAPTED FROM US FISH AND WILDLIFE WETLAND INVENTORY MAP
APPROXIMATE INNE DEGREE AND ACCESS ROAD	

**FOOT & VAN DYKE**

REVISED	DATE	BY	DESCRIPTION

CHECKED BY: JOSI DATE: FEB. '06  
 APPROVED BY: SVDI DATE: FEB. '06

Prepared By: Foth & Van Dyke | By: C.G.B. | 04/NO/08

**Kennecott**  
Eagle Minerals

**FIGURE 4-2**  
SITE DEVELOPMENT PLAN AND TOPOGRAPHIC MAP

DATE: FEBRUARY, 2006