

US EPA ARCHIVE DOCUMENT

### **List of Figures**

<b>Figure 1</b>	Community Water Supply Wells Within 15 Miles
<b>Figure 2</b>	Regional Geologic Cross Section – West to East
<b>Figure 3</b>	Regional Geologic Cross Section – North to South
<b>Figure 4</b>	Dewitt County Aquifer Sensitivity
<b>Figure 5</b>	Groundwater Flow in the Mahomet Aquifer
<b>Figure 6</b>	Locations of the City of Clinton and Weldon Springs Wells

### **List of Attachments**

<b>Attachment 1</b>	Summary of Active Water Supply Wells
<b>Attachment 2</b>	PCBs Groundwater Model Assessment
<b>Attachment 3</b>	Design Drawings
<b>Attachment 4</b>	Chemical Waste Unit Operating Plan
<b>Attachment 5</b>	CQA Report of Test Liner
<b>Attachment 6</b>	Revised Slope Stability Analyses
<b>Attachment 7</b>	Leachate Treatment Plant Correspondence
<b>Attachment 8</b>	USEPA Notification
<b>Attachment 9</b>	Pipe Strength Calculations
<b>Attachment 10</b>	Macon County Correspondence

## FIGURES



T:\AutoCAD\Projects\ldwg\USEPA\Figures\_USEPA\_response\figure 1 \_ 15 miles radius.dwg, 2/9/2009 4:34:16 PM, lseistcps00C

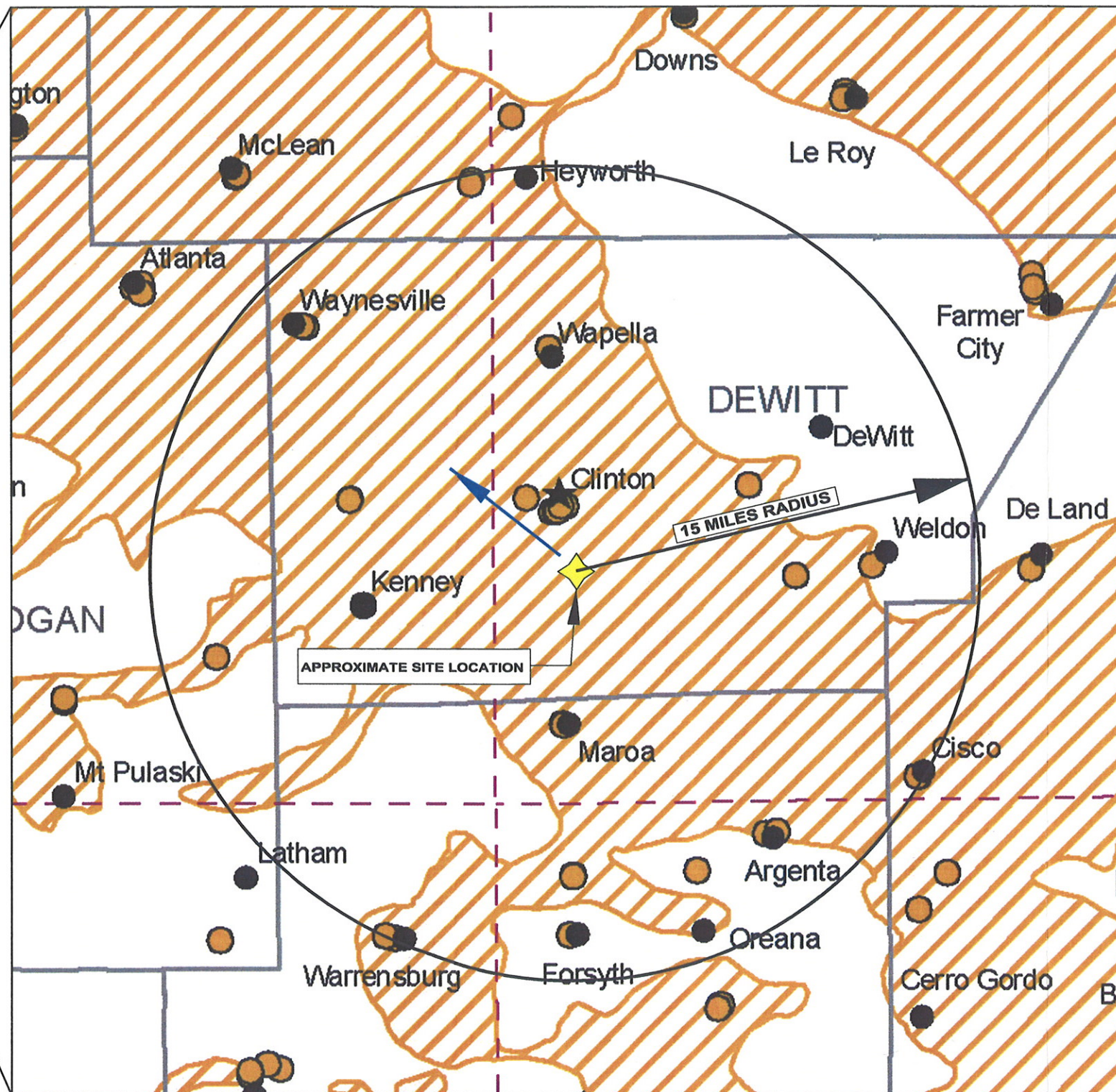
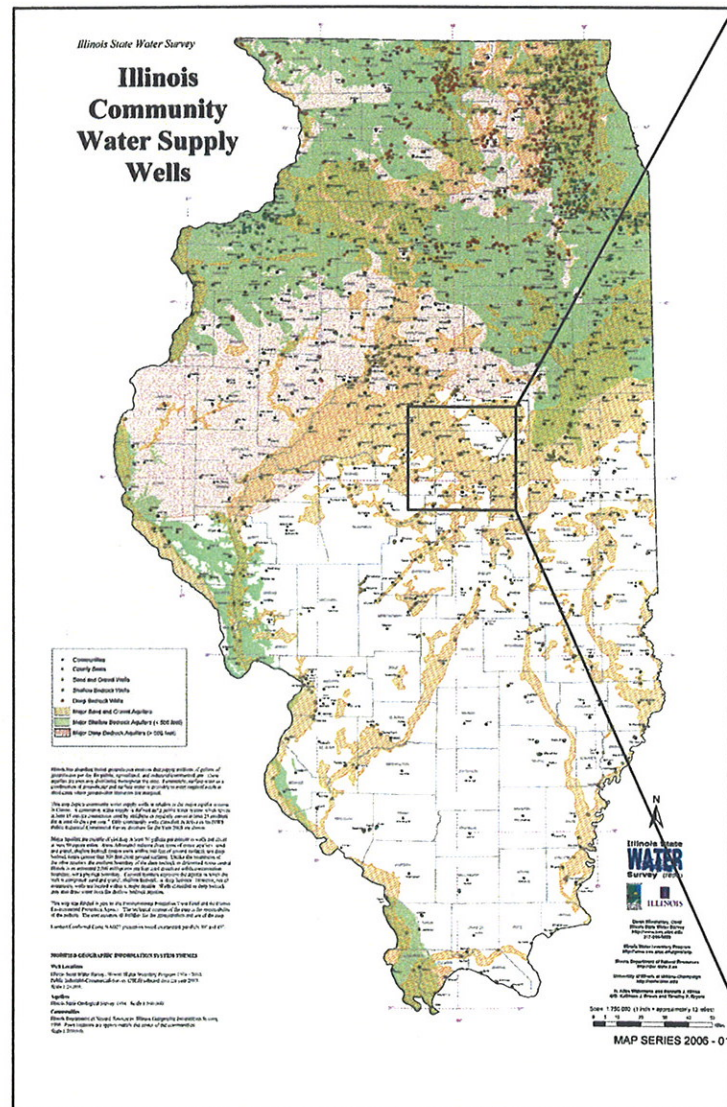


FIGURE ADAPTED FROM ILLINOIS STATE WATER SURVEY MAP SERIES 2006-01 AND FROM WEHRMANN, JULY 27, 2007 PRESENTATION "GROUND OCCURRENCE & MOVEMENT: AN INTRODUCTORY DISCUSSION WITH APPLICATION TO EAST-CENTRAL ILLINOIS".



Clinton Landfill, Inc.



Shaw® Shaw Environmental, Inc.

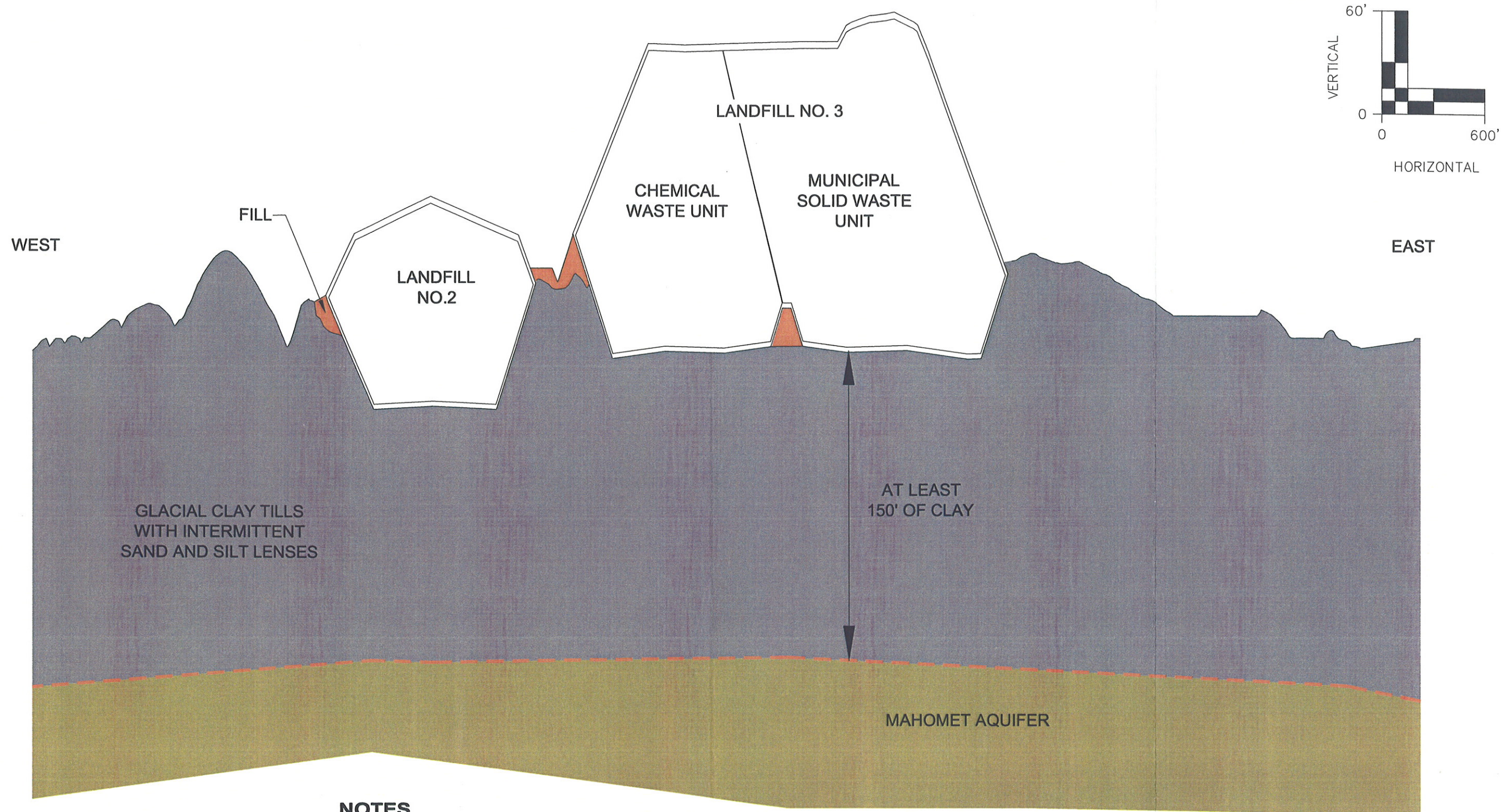
CLINTON LANDFILL NO. 3 CHEMICAL WASTE UNIT  
DEWITT COUNTY, ILLINOIS

FIGURE 1  
COMMUNITY WATER SUPPLY WELLS WITHIN 15 MILES

DRAWN BY: APD APPROVED BY: DAM PROJ. NO.: 128017 DATE: FEB 2009



T:\AutoCAD\Projects\USEPA\Figures\USEPA response\Fig 2\_Regional Cross section.dwg, 2/2/2009 2:47:45 PM, Useistcpst in Color



### NOTES

1. THIS REGIONAL GEOLOGIC CROSS SECTION IS BASED ON INFORMATION FROM ON-SITE BORING LOCATIONS AND OFF-SITE PRIVATE WATER WELL LOGS. ACTUAL CONDITIONS MAY VARY.
2. THIS GEOLOGIC CROSS SECTION WAS DEVELOPED TO SHOW THE LOCATION OF THE MAHOMET AQUIFER AND ITS POSITION RELEVANT TO THE INVERT GRADES OF THE CLINTON LANDFILL NO.2 AND NO.3.

3. THE THICKNESS OF THE GLACIAL CLAY TILLS WITH INTERMITTENT SAND AND SILT LENSES IS APPROXIMATELY 170 FEET THICK BELOW THE INVERT OF THE CLINTON LANDFILL NO.3. CLAY MAKES UP AT LEAST 150 FEET OF THE 170 FEET OF GLACIAL CLAY TILLS WITH INTERMITTENT SAND AND SILT LENSES.

Shaw Environmental, Inc. has prepared this document for a specific project or purpose. All information contained within this document is copyrighted and remains intellectual property of Shaw Environmental, Inc. This document may not be used or copied, in part or in whole, for any reason without expressed written consent by Shaw Environmental, Inc.



Clinton Landfill, Inc.



Shaw Environmental, Inc.

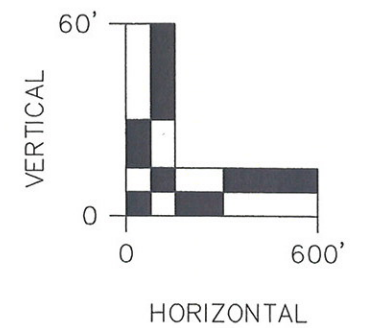
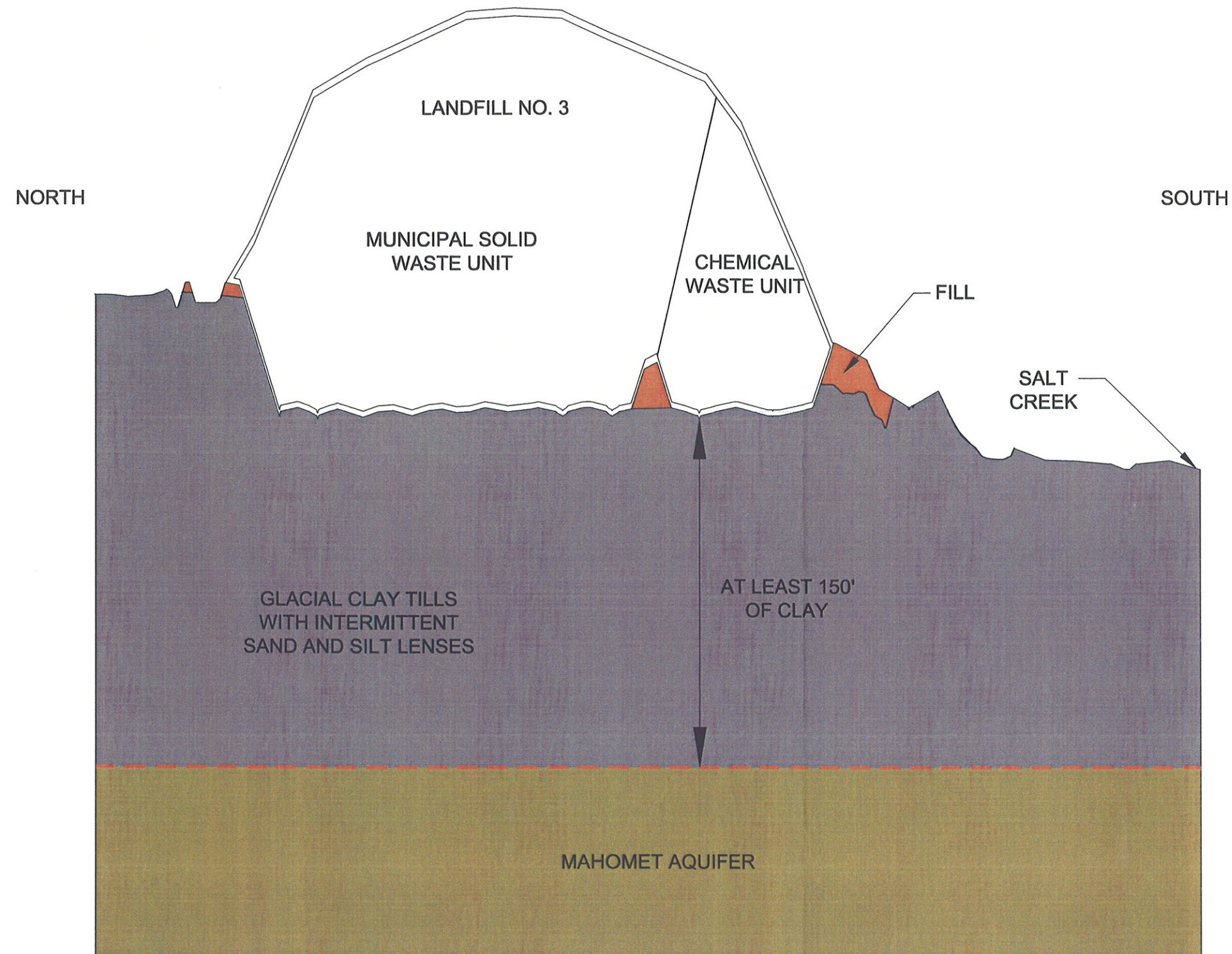
**CLINTON LANDFILL NO.3 CHEMICAL WASTE UNIT  
DEWITT COUNTY, ILLINOIS**

**FIGURE 2  
REGIONAL GEOLOGIC CROSS SECTION - WEST TO EAST**

REV. NO.	DATE	DESCRIPTION
----------	------	-------------

DRAWN BY:	APD	APPROVED BY:	DJD	PROJ. NO.:	128017	DATE:	SEPT 2008
-----------	-----	--------------	-----	------------	--------	-------	-----------





### NOTES

1. THIS REGIONAL GEOLOGIC CROSS SECTION IS BASED ON INFORMATION FROM ON-SITE BORING LOCATIONS. ACTUAL CONDITIONS MAY VARY.
2. THIS GEOLOGIC CROSS SECTION WAS DEVELOPED TO SHOW THE LOCATION OF THE MAHOMET AQUIFER AND ITS POSITION RELEVANT TO THE INVERT GRADES OF THE CLINTON LANDFILL NO.3.
3. THE THICKNESS OF THE GLACIAL CLAY TILLS WITH INTERMITTENT SAND AND SILT LENSES IS APPROXIMATELY 170 FEET THICK BELOW THE INVERT OF THE CLINTON LANDFILL NO.3. CLAY MAKES UP AT LEAST 150 FEET OF THE 170 FEET OF GLACIAL CLAY TILLS WITH INTERMITTENT SAND AND SILT LENSES.

T:\AutoCAD\Projects\7\dwg\APD\N-S Cross section.dwg 1/27/2009 10:59:22 AM CST

REV. NO.	DATE	DESCRIPTION



Clinton Landfill, Inc.



Shaw Environmental, Inc.

**CLINTON LANDFILL NO.3 CHEMICAL WASTE UNIT  
DEWITT COUNTY, ILLINOIS**

**FIGURE 3  
REGIONAL GEOLOGIC CROSS SECTION - NORTH TO SOUTH**

DRAWN BY: BWM APPROVED BY: DAM PROJ. NO.: 128017 DATE: JANUARY 2009



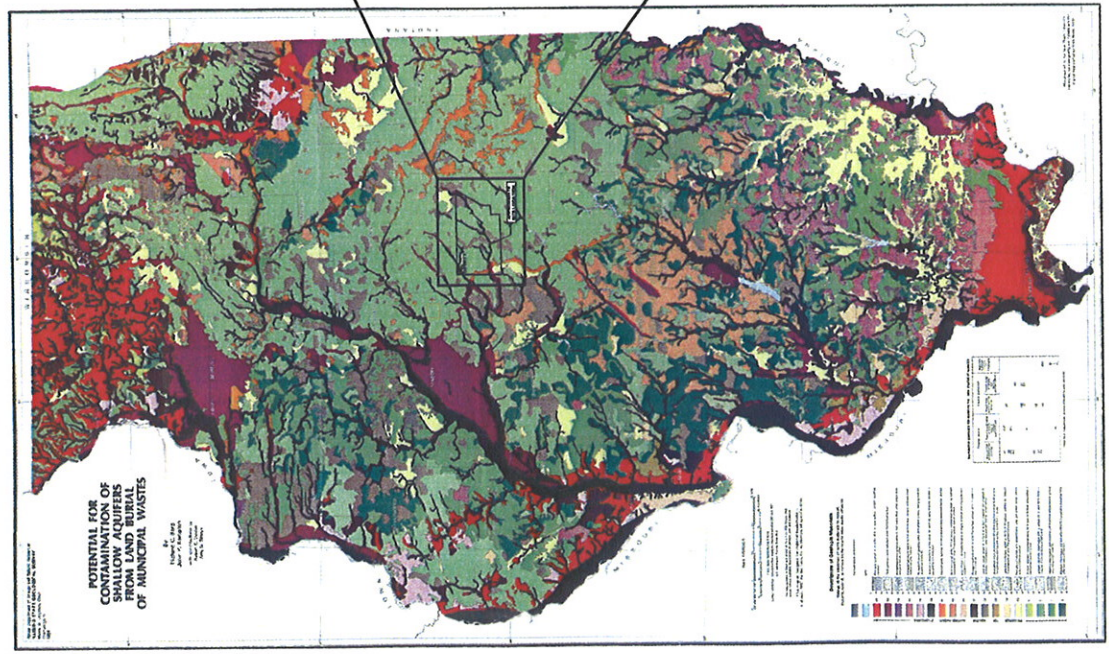
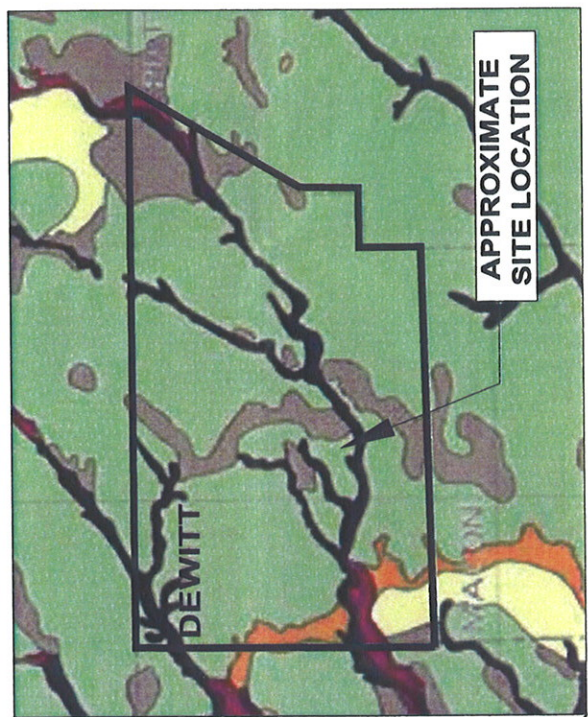
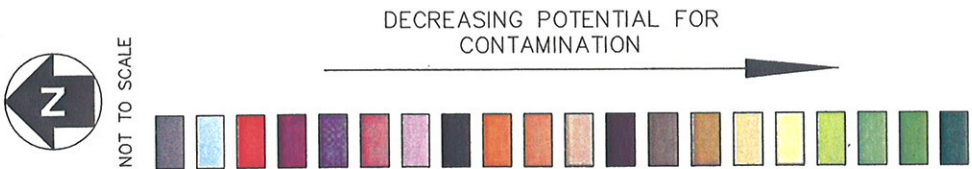


FIGURE ADAPTED FROM BERG AND KEMPTON, 1984.

# CLINTON LANDFILL NO.3 CHEMICAL WASTE UNIT DEWITT COUNTY, ILLINOIS

FIGURE 4  
DEWITT COUNTY AQUIFER SENSITIVITY



Shaw® Shaw Environmental, Inc.

DRAWN BY:	APD	APPROVED BY:	DJD	PROJ. NO.:	128017	DATE:	SEPT 2008
-----------	-----	--------------	-----	------------	--------	-------	-----------



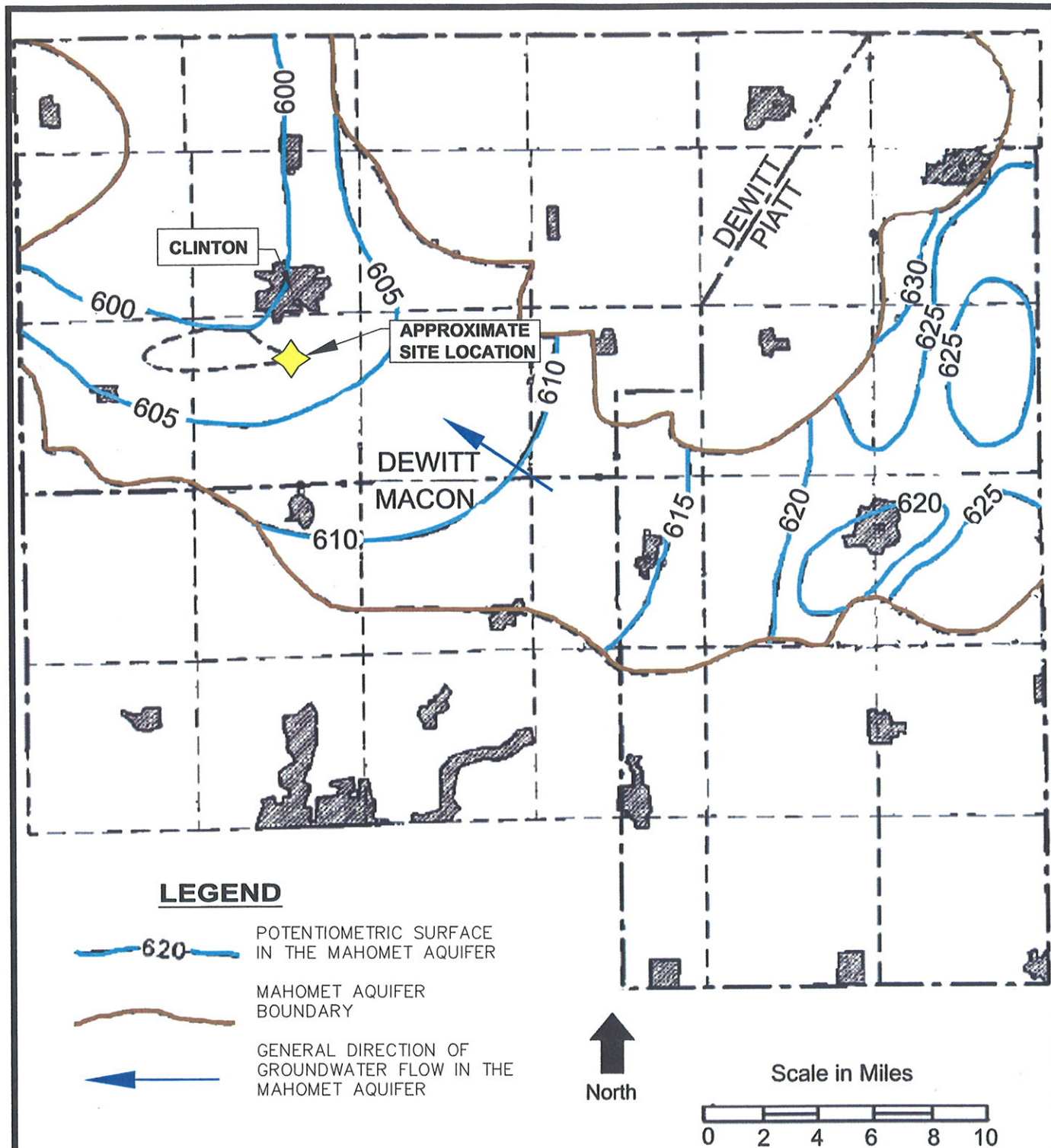


FIGURE ADAPTED FROM ANLIKER AND SANDERSON, 1995.

**Shaw** Shaw Environmental, Inc.

**CLINTON LANDFILL NO.3 CHEMICAL WASTE UNIT  
DEWITT COUNTY, ILLINOIS**

**FIGURE 5  
GROUNDWATER FLOW IN THE MAHOMET AQUIFER**

APPROVED BY: DJD PROJ. NO.: 128017 DATE: SEPT 2008








T:\AutoCAD\Projects\dwg\USEPA\Figures\_USEPA\_response\Figure\_6\_locations of city of clinton wells.dwg, 2/9/2009 4:36:57 PM, -rps00\Canon Color



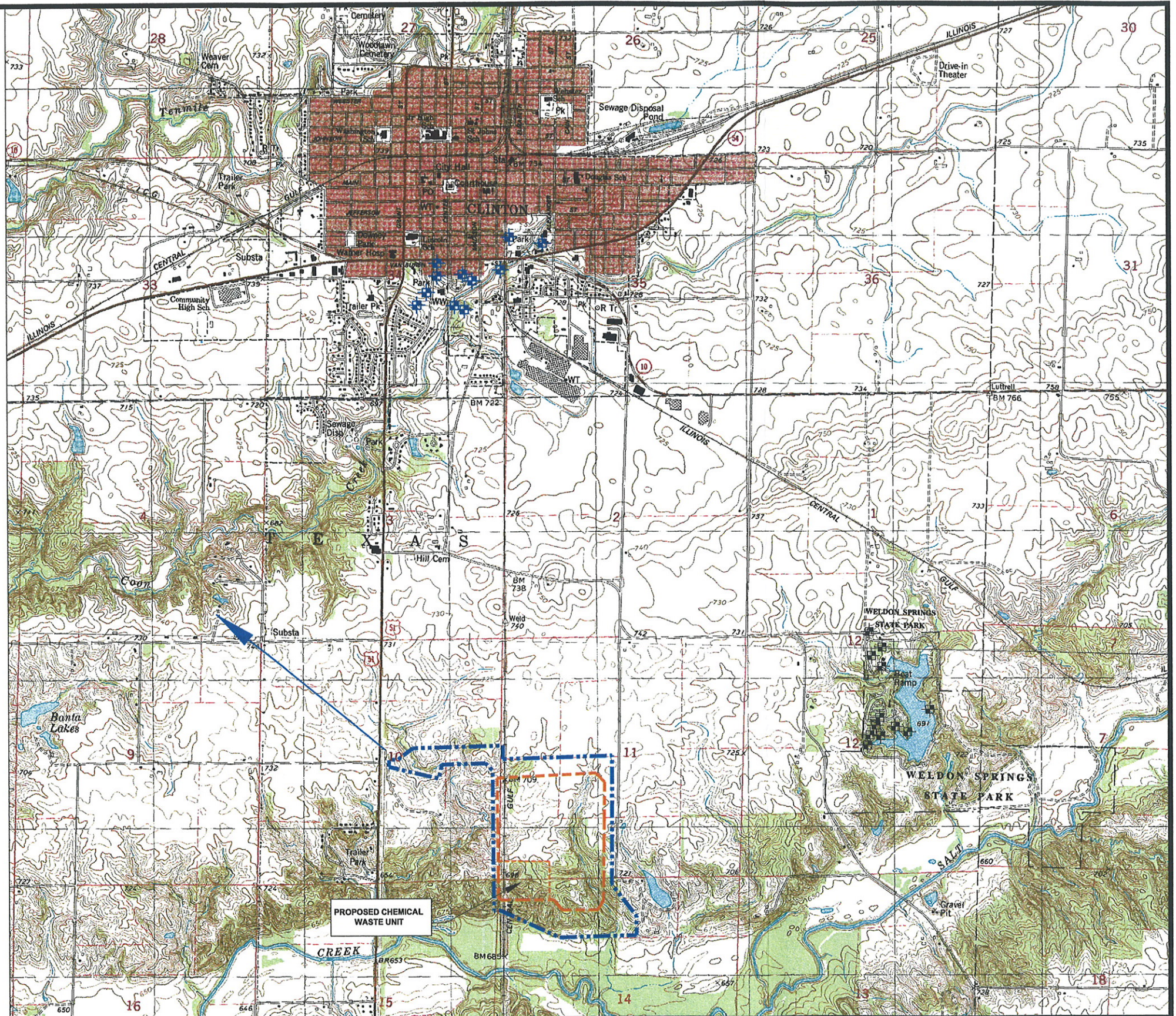
GRAPHIC SCALE

### LEGEND

-  APPROXIMATE FACILITY BOUNDARY
-  APPROXIMATE EXISTING WASTE BOUNDARY
-  CITY OF CLINTON WELLS
-  WELDON SPRINGS WELLS
-  GENERAL GROUNDWATER FLOW IN THE MAHOMET AQUIFER

### MAP REFERENCES:

1. U.S.G.S. 7.5 MINUTE SERIES (TOPOGRAPHIC) QUADRANGLE MAPS, CLINTON - DEWITT COUNTY, ILLINOIS (1979), MAROA - DEWITT COUNTY, ILLINOIS (1979).



Shaw Environmental, Inc. has prepared this document for a specific project or purpose. All information contained within this document is copyrighted and remains intellectual property of Shaw Environmental, Inc. This document may not be used or copied, in part or in whole, for any reason without expressed written consent by Shaw Environmental, Inc.



Clinton Landfill, Inc.



Shaw Shaw Environmental, Inc.

## CLINTON LANDFILL NO.3 CHEMICAL WASTE UNIT DEWITT COUNTY, ILLINOIS

### FIGURE 6 LOCATIONS OF THE CITY OF CLINTON AND WELDON SPRINGS WELLS

DRAWN BY: APD APPROVED BY: DJD PROJ. NO.: 128017 DATE: SEPT 2008

REV. NO.	DATE	DESCRIPTION