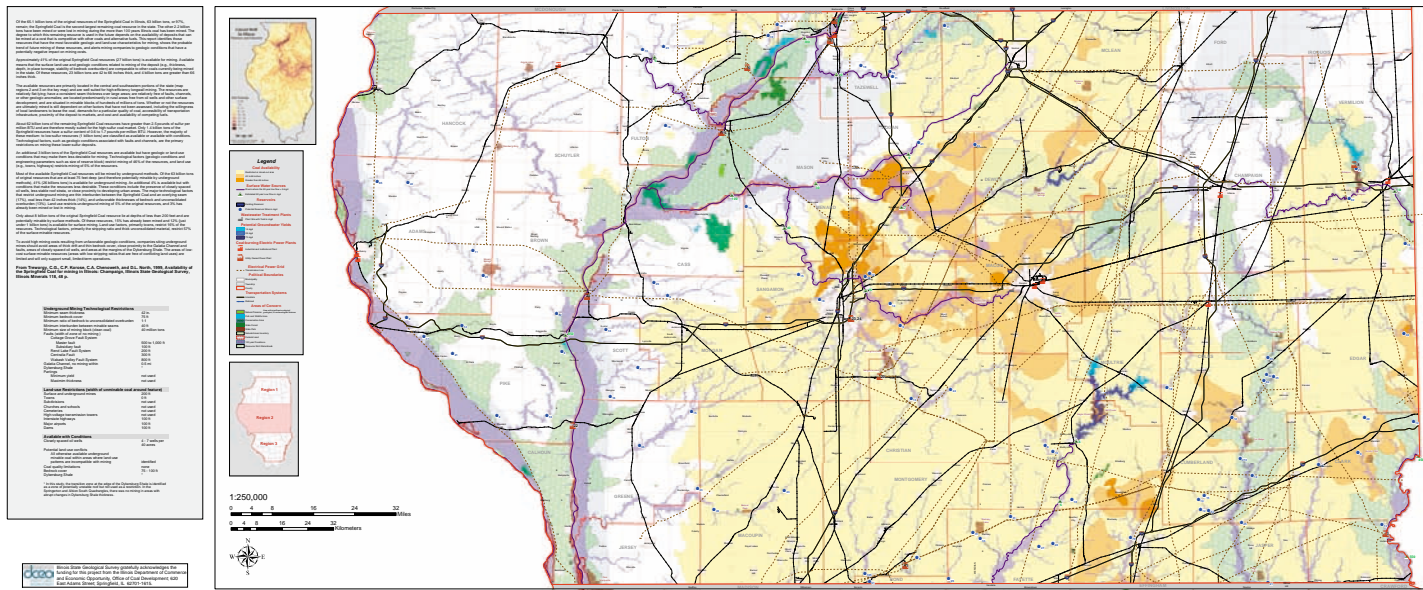


US EPA ARCHIVE DOCUMENT

A Guide to Coal Availability and Resource Development in Illinois Springfield (No. 5) Coal



Steven R. Gustison, Philip M. Johaneck, Robert J. Finley, Illinois State Geological Survey



Map showing the availability and resource development of the Springfield Coal in the central portion of Illinois.

Coal Mine Maps Completed

Maps of abandoned mines have been completed for nine 7.5-minute quadrangles in Grundy, Williamson, Livingston, McLean, and Gallatin Counties. The maps are accompanied by directories containing detailed information about the mine histories and sources of information. Paper and digital versions

of the maps have been delivered to the project sponsors, **Illinois Department of Transportation** and the **Illinois Mine Subsidence Insurance Fund**, and released to the public. The maps will be valuable for government agencies, planners and developers, and private citizens in identifying undermined areas.

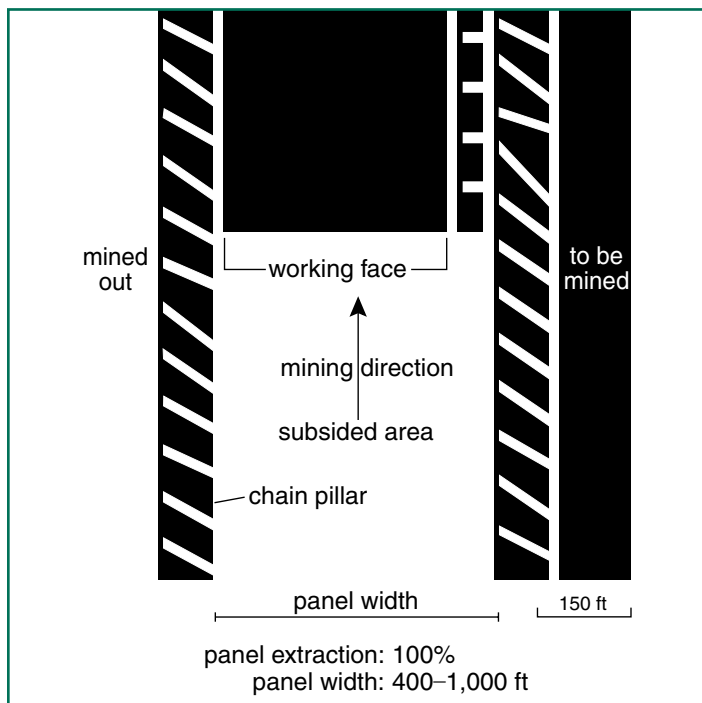


Diagram of a modern longwall coal mining method. All coal is removed along a straight mining face, forming a sharply defined panel with no remaining coal support except a row of pillars between panels.

Coal Outreach

ISGS geologists recently had two good opportunities to share coal information with interested audiences. An ISGS senior geologist presented a talk on coal mining to the **Fayette County Soil and Water Conservation District** in Vandalia. The audience of 250 farmers was concerned about proposed longwall mining in Fayette County. The talk and question-and-answer session focused on mining methods (longwall vs. room-and-pillar) and on the causes and types of ground subsidence.

Two ISGS Coal Section geologists presented a program on coal and coal bed methane potential in Effingham County at the **Effingham County Farm Bureau**. The geologists discussed multiple posters showing coal thickness, depth, and other information about the county. The posters were then donated to the Effingham Farm Bureau. Also on the program was a Farm Bureau attorney who spoke on mineral rights ownership, severed titles, recovery of titles, and related issues. There was lively discussion by the presenters and the nearly 50 farmers present, and many thanks were expressed to the ISGS for its contributions to the program.

During summer 2006, ISGS staff members participated in the 2006 Coal Education Conference, which was sponsored by the **Illinois Department of Commerce and Economic**