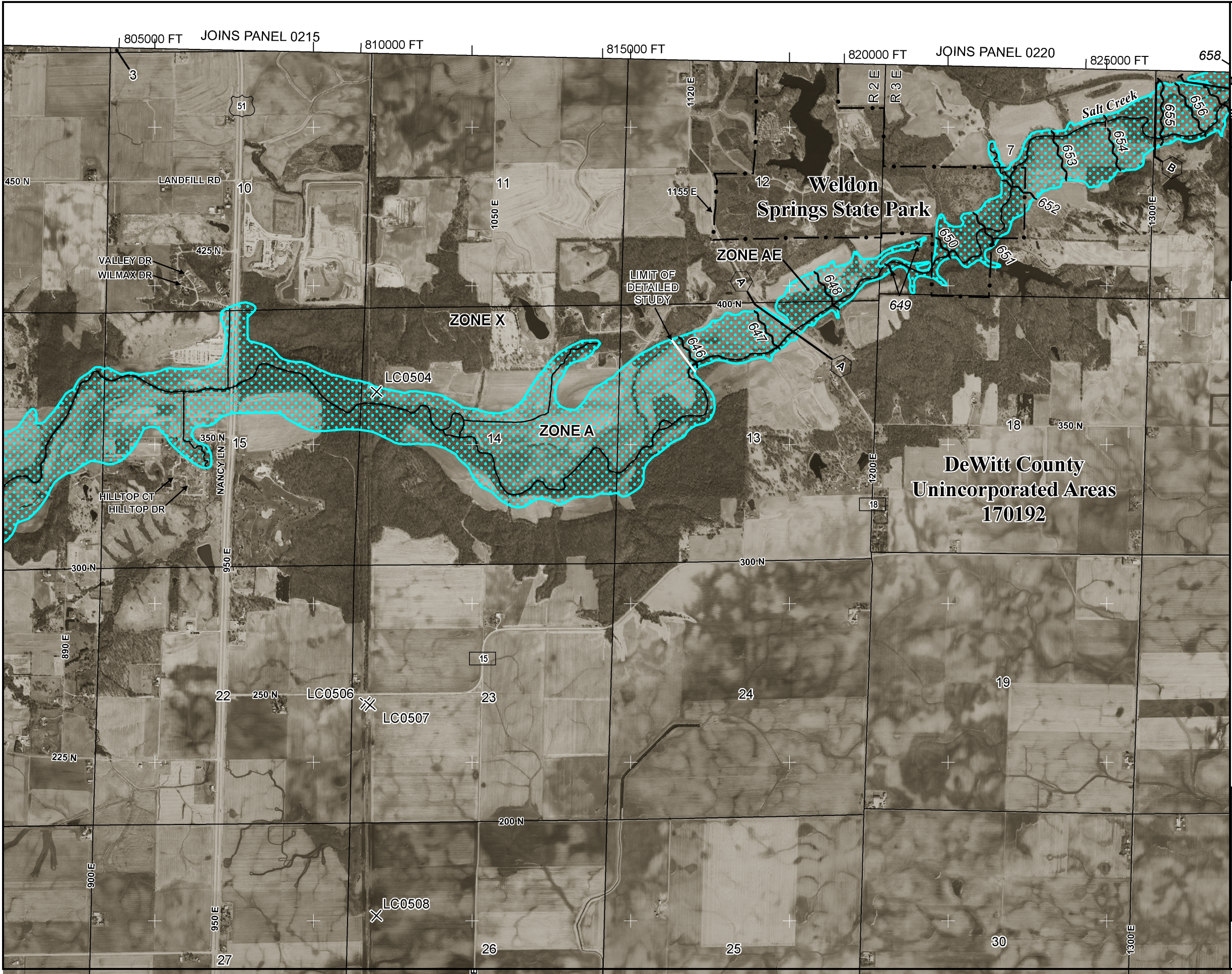
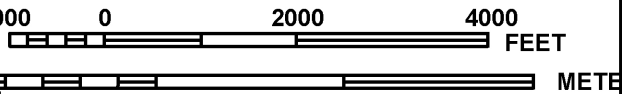


US EPA ARCHIVE DOCUMENT



MAP SCALE 1" = 2000'



PANEL 0375E

FIRM
FLOOD INSURANCE RATE MAP
DE WITT COUNTY,
ILLINOIS
AND INCORPORATED AREAS

PANEL 375 OF 425
(SEE MAP INDEX FOR FIRM PANEL LAYOUT)

| | | | |
|----------------|--------|-------|--------|
| CONTAINS: | | | |
| COMMUNITY | NUMBER | PANEL | SUFFIX |
| DE WITT COUNTY | 170192 | 0375 | E |

Notice to User: The **Map Number** shown below should be used when placing map orders; the **Community Number** shown above should be used on insurance applications for the subject community.



MAP NUMBER
17039C0375E
MAP REVISED
NOVEMBER 2, 2007

Federal Emergency Management Agency

This is an official copy of a portion of the above referenced flood map. It was extracted using F-MIT On-Line. This map does not reflect changes or amendments which may have been made subsequent to the date on the title block. For the latest product information about National Flood Insurance Program flood maps check the FEMA Flood Map Store at www.msc.fema.gov