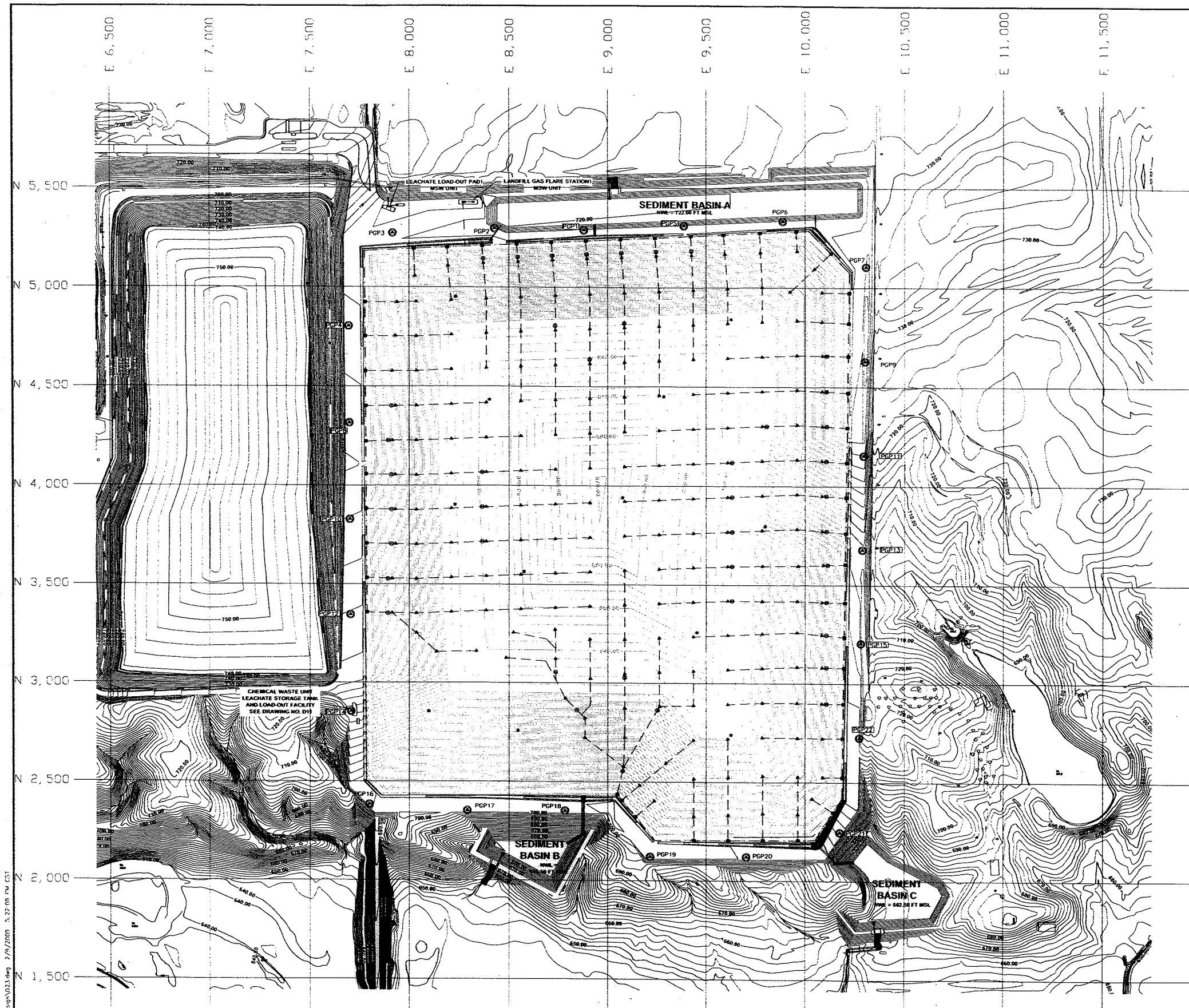


US EPA ARCHIVE DOCUMENT



GRAPHIC SCALE

200' 0 20

A horizontal scale bar with alternating black and white segments. It is labeled with '200'' on the left, '0' in the middle, and '20' on the right.

### LEGEND

- APPROXIMATE EXISTING PERMITTED CLINTON LANDFILL NO.3  
WASTE BOUNDARY
- APPROXIMATE CLINTON LANDFILL NO.3 FACILITY BOUNDARY
- 690.00
- TOP OF FINAL GRADE CONTOUR
- ▲ PROPOSED LANDFILL GAS EXTRACTION WELL
- ⊙ DRIPLEG
- GAS HEADER VALVE
- ▲\* EXTRACTION WELLS ALSO SERVING AS INTERIOR GAS MONITORING WELLS
- \* INTERIOR GAS MONITORING WELLS
- PROPOSED LANDFILL GAS HEADER PIPE
- PROPOSED LANDFILL GAS PIPE
- PCPG
- PROPOSED PERIMETER GAS PROBE

## NOTES

1. FINAL GRADES DEVELOPED FROM DRAWING NO. P-LFG1, DATED 6/7/06, FROM SIGNIFICANT MODIFICATION PERMIT APPLICATION LOG NO. 2005-070.
2. FOR CLARITY, NOT ALL SITE FEATURES MAY BE SHOWN
3. CURRENT TOPOGRAPHY MAY DIFFER FROM THAT SHOWN.
4. THE NEED FOR FLEXIBILITY TO ACCOMMODATE ADJUSTMENTS AND MODIFICATIONS IS ANTICIPATED CONSIDERING THE SIZE, COMPLEXITY, AND LIFE OF THE PROJECT.
5. THE PEAK ELEVATION OF THE LANDFILL IS APPROXIMATELY 871 FEET MSL.
6. STRUCTURES TO REMAIN DURING POST-CLOSURE CARE PERIOD: MAINTENANCE BUILDING, LEACHATE LOAD-OUT PAD, LEACHATE STORAGE TANK, AND FLARE STATION
7. ALL RELATED LFG DETAILS ARE SHOWN ON PDC TECHNICAL SERVICES, INC. DRAWINGS P-LFG1 AND P-LFG2, AS APPROVED BY ILLINOIS EPA PERMIT.

[illegible]

## Clinton Landfill, Inc.



**Shaw®** Shaw Environmental, Inc.

**CLINTON LANDFILL NO. 3 CHEMICAL WASTE UNIT  
DEWITT COUNTY, ILLINOIS**

## LANDFILL GAS MANAGEMENT SYSTEM

PROJECT NO.:	128017	DATE:	FEBRUARY 2008
DESIGNED BY:	EJD	DRAWING NO.	<b>D23</b> 23 OF 23 SHEETS
DRAWN BY:	TDS		
CHECKED BY:	JPV		
APPROVED BY:	DAM		