

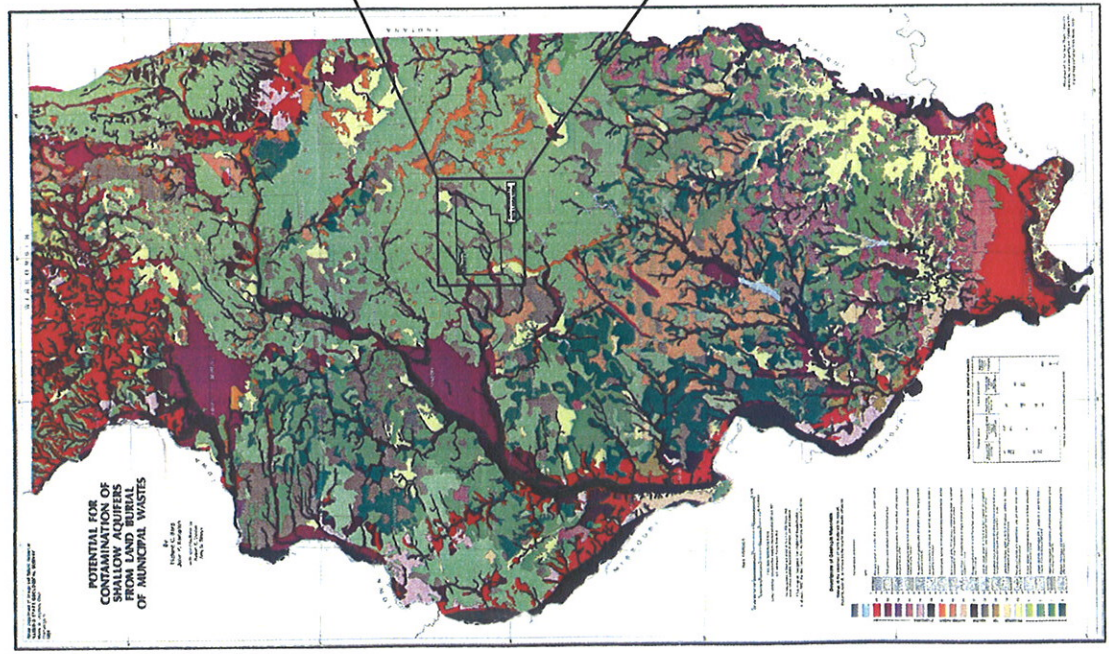
US EPA ARCHIVE DOCUMENT



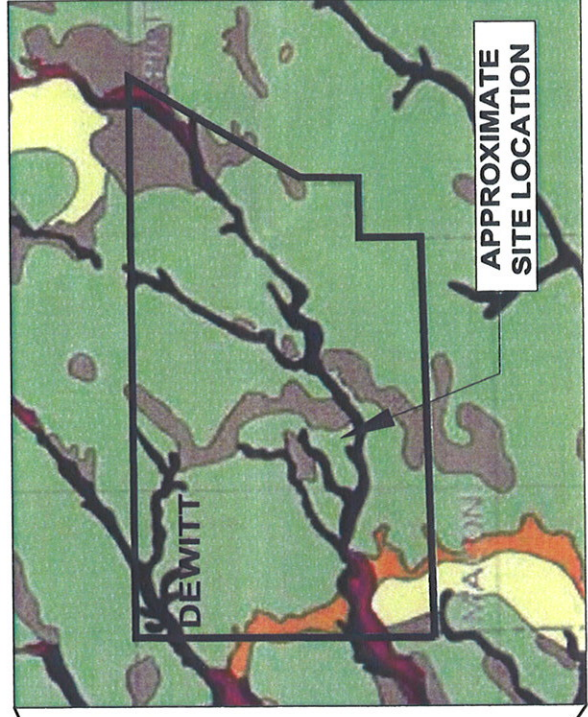
NOT TO SCALE



DECREASING POTENTIAL FOR CONTAMINATION



POTENTIAL FOR CONTAMINATION OF AQUIFERS FROM LAND BURIAL OF MUNICIPAL WASTES



APPROXIMATE SITE LOCATION

FIGURE ADAPTED FROM BERG AND KEMPTON, 1984.

# CLINTON LANDFILL NO.3 CHEMICAL WASTE UNIT DEWITT COUNTY, ILLINOIS

## FIGURE 4 DEWITT COUNTY AQUIFER SENSIBILITY



# Shaw Environmental, Inc.

DRAWN BY: APD APPROVED BY: DJD PROJ. NO.: 128017 DATE: SEPT 2008