

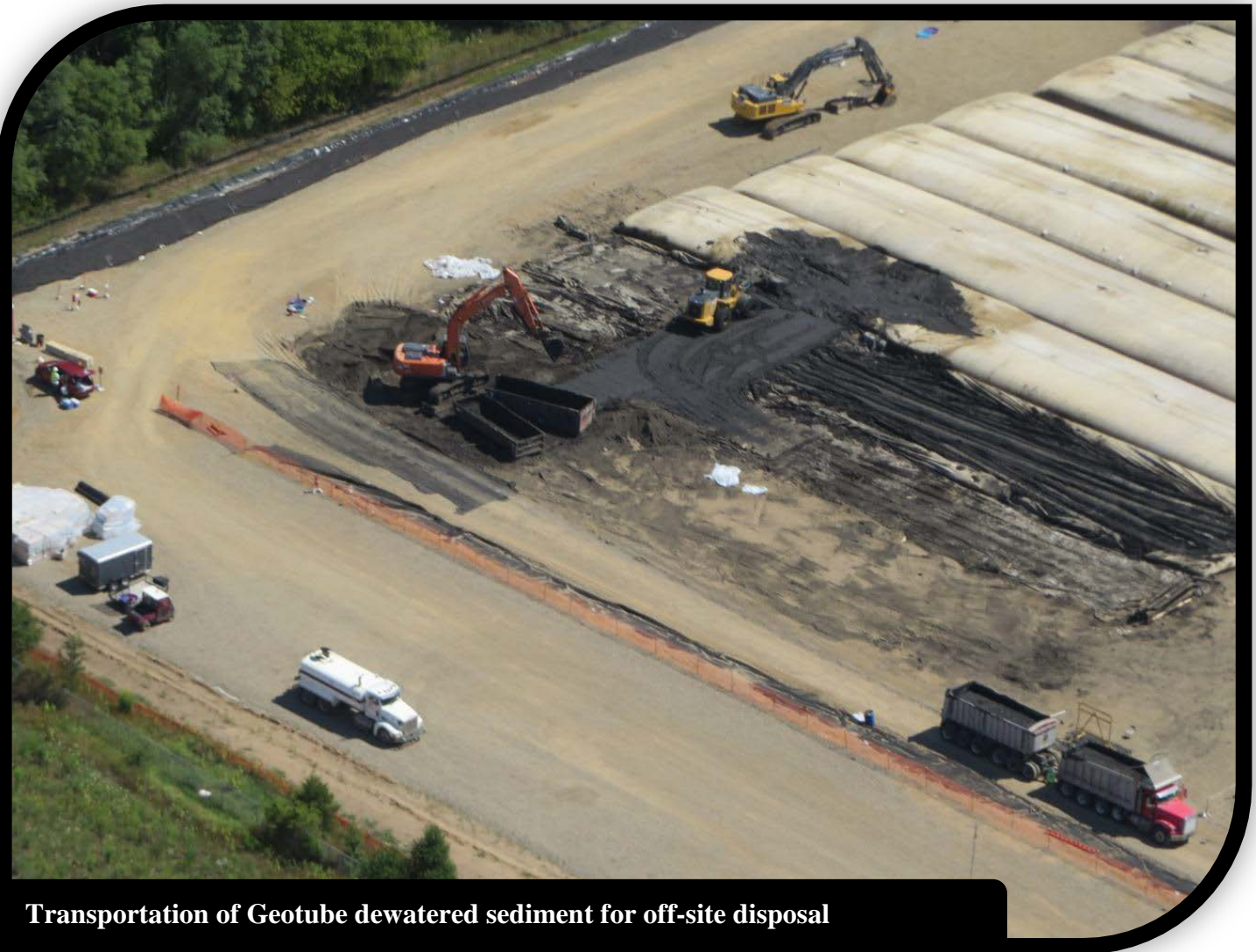
US EPA ARCHIVE DOCUMENT

U.S. ENVIRONMENTAL PROTECTION AGENCY, REGION V  
POLLUTION/SITUATION REPORT #212



**KALAMAZOO RIVER/ENBRIDGE SPILL – REMOVAL  
SITE # Z5JS  
MARSHALL, MICHIGAN  
LATITUDE: 42.2395273; LONGITUDE: -84.9662018**

**US EPA ARCHIVE DOCUMENT**



**Transportation of Geotube dewatered sediment for off-site disposal**

**To:** Susan Hedman, U.S. EPA Regional Administrator  
 James Sygo, MDEQ  
 Michelle DeLong, MDEQ  
 Dr. Linda Dykema, MDCH  
 Deb Cardiff, Kalamazoo County Public Health  
 Richard Fuller, Kalamazoo County Sheriff's Office  
 James Rutherford, Calhoun County Public Health Department  
 Durk Dunham, Calhoun County Emergency Management  
 Scott Corbin, Allegan County Emergency Management  
 Tiffany Eichorst, City of Battle Creek  
 Cheryl Vosburg, City of Marshall  
 Christine Kosmowski, Calhoun County Water Resources Commissioner  
 Ann Nieuwenhuis, Comstock Township

**From:** Jeffrey Kimble, U.S. EPA, Federal On-Scene Coordinator  
**Date:** 09/09/2014  
**Operational Periods:** 0700 hours 08/04/2014 through 0700 hours 08/11/2014  
 0700 hours 08/11/2014 through 0700 hours 08/18/2014  
**Reporting Period:** 0700 hours 08/04/2014 through 0700 hours 08/18/2014

***1. Site Data***

<b>Site Number:</b>	Z5JS	<b>Response Type:</b>	Emergency
<b>Response Authority:</b>	OPA	<b>Incident Category:</b>	Removal Action
<b>Response Lead:</b>	RP	<b>NPL Status:</b>	Non-NPL
<b>Mobilization Date:</b>	7/26/2010	<b>Start Date:</b>	7/26/2010
<b>FPN#:</b>	E10527		

***2. Operations Section***

- The organizational response structure consisted of the following Divisions/Groups: 1) Water Operations; 2) Morrow Lake; and 3) Waste Management.

**2.1 Water Operations Group**

- Enbridge continued to monitor and maintain the E4 containment system in the Morrow Lake Delta throughout the reporting period.
- Enbridge continued to monitor and maintain the Ceresco pilot channel containment. River margin restoration work continued throughout the reporting period.
- No sheen responses were conducted during the reporting period.

## 2.2 Morrow Lake Division

- On-water dredging activities in the Morrow Lake Delta/Neck and at the MP 36.10 sediment trap were conducted throughout the reporting period with three to five dredges. Morrow Lake Delta dredge pad operations also continued throughout the reporting period. As of the close of the reporting period, approximately 77,595 cubic yards of impacted materials were removed from the Morrow Lake Delta, representing approximately 85% of the required dredging. Approximately 152,000,000 gallons of water have been treated and discharged in accordance with Enbridge's NPDES permit during the 2014 dredging operations in the Morrow Lake Division.
- Enbridge continued daily dredge pad perimeter air monitoring for particulates throughout the reporting period. U.S. EPA also conducted periodic perimeter air monitoring for particulates. No exceedances of the MDCH or U.S. EPA 24-hour average concentration for particulates occurred during the reporting period related to dredge pad operations.
- Enbridge continued daily air monitoring using a 5-gas meter throughout the community immediately adjacent and east of the Morrow Lake Delta dredge pad. U.S. EPA conducted air monitoring within the community using handheld particulate monitoring units.

## 2.3 Waste Management Division

- Transportation and disposal of dredged sediment from the Del Tank and Geotubes continued throughout the reporting period.
- Cumulative quantities of soil, debris, and liquid shipped off-site during the response are presented in Tables 1 and 2.
- The cumulative quantity of recovered oil has been estimated using actual waste stream volumes, analytical data, and physical parameters of oil-containing media. A summary of the estimated volume of recovered oil is presented in Table 3.

## 3. Planning Section

### 3.1 Situation Unit

- During the reporting period, overflights were conducted on August 6 and 14, 2014 to document all operational areas and river conditions, including locations of sheening. Photographs were taken and distributed to project participants in a weekly Situation Update photograph log and during the weekly Consolidated ICS Meeting.

### 3.2 Environmental Unit

- U.S. EPA, USGS, and the U.S. Army Corps of Engineers held weekly meetings to discuss Hydrodynamic Model (HDM) activities. Development of the HDM and sediment transport model continued throughout the reporting period.

### 3.3 Documentation Unit

- The Documentation Unit continued organizing and archiving electronic and paper files for post-incident use.

### 3.4 Resource Unit

- The Resources Unit continued to support production of the Incident Action Plan (IAP), supported the planning efforts of operations, and provided information to Logistics personnel in order to properly prepare and procure resources.

## 4. *Command*

---

### 4.1 Safety Officers

- Enbridge safety personnel continued conducting work-site safety inspections and implementing the plan for integration of public safety and worker safety on the Kalamazoo River.
- The USCG is providing the U.S. EPA with on-site support by monitoring safety throughout all active work areas.

### 4.2 Public Information

- The number of public inquires reported by Enbridge for this period is presented in Table 5.

## 5. *Finance*

---

- The current National Pollution Funds Center (NPFC) ceiling is \$69.25 million. Approximately 91.9% of the ceiling has been spent through August 17, 2014. The latest average 14-day burn rate was \$26,702 per day. These cost summaries reflect only U.S. EPA-funded expenditures for the incident. A summary of these expenses is presented in Table 6.

## 6. *Scientific Support Coordination Group (SSCG)*

---

- No activities were conducted during this operational period.

## 7. *Participating Entities*

---

- U.S. EPA and MDEQ continued meeting bi-weekly with a group of stakeholders to discuss how to continue to effectively communicate, share information about site progress, and receive feedback about the communication needs of the local communities. During this reporting period, the Stakeholder group met on August 14, 2014.
- For a list of cooperating and assisting agencies, see SITREP #51 (Sections 3.2 and 3.3).

## 8. *Personnel On-Site*

---

- Staffing numbers for the entities and agencies active in the response are presented in Table 7.

## 9. *Source of Additional Information*

---

- For additional information, refer to <http://www.epa.gov/enbridgespill>. For sampling analysis data, see <http://response.enbridge.com/response/>.

## 10. Clean-up Progress Metrics

**Table 1 - Soil and Debris Shipped Off Site (as of 08/17/2014)**

Waste Stream	Cumulative	Disposal Facility
<i>Haz Soil (yd<sup>3</sup>)</i>	<i>19,644</i>	<i>Envirosafe (Oregon, OH)</i>
Non-Haz Soil (yd <sup>3</sup> )	275,120	SET/C&C
Non-Haz Soil (yd <sup>3</sup> )	4,956	SET/Ottawa County Farms
Non-Haz Soil (yd <sup>3</sup> )	14,673	SET/WM Westside
<i>Non-Haz Soil &amp; Debris (yd<sup>3</sup>) (Excluding 2010 Ceresco Dredge)</i>	<i>64,815</i>	<i>Westside Recycling (Three Rivers, MI)</i>
<i>Non-Haz Soil (yd<sup>3</sup>) (2010 Ceresco Dredge Only)</i>	<i>5,562</i>	<i>EQ/Republic (Marshall, MI)</i>
<i>Haz Debris (yd<sup>3</sup>)</i>	<i>12,075</i>	<i>EQ/Michigan Disposal (Wayne, MI) and Republic (Marshall, MI)</i>
Non-Haz Household Debris (ton)	2,566	SET/C&C
Non-Haz Impacted Debris (ton)	16,037	

*Shaded and italicized items are discontinued waste streams.*

**Table 2 - Liquid Shipped Off-Site (as of 08/17/2014)**

Stream	Destination Company	Destination Location	Cumulative Volume (gallons)†
Non-Haz Water	Liquid Industrial Waste	Holland, MI	1,557,407
Non-Haz Water	Plummer	Kentwood, MI	936,009
<i>Non-Haz Water</i>	<i>Dynecol</i>	<i>Detroit, MI</i>	<i>981,792</i>
<i>Non-Haz Water</i>	<i>Battle Creek POTW</i>	<i>Battle Creek, MI</i>	<i>1,143,280</i>
<i>Hazardous Water</i>	<i>Dynecol</i>	<i>Detroit, MI</i>	<i>3,594,579</i>
<i>Oil Other Material</i>	<i>Enbridge Facility</i>	<i>Griffith, IN</i>	<i>766,288 1,405,525</i>
<i>Treated Non-Haz Water</i>	<i>Liquid Industrial Waste</i>	<i>Holland, MI</i>	<i>370,200</i>
<i>Treated Non-Haz Water</i>	<i>Plummer</i>	<i>Kentwood, MI</i>	<i>4,976,140</i>
<i>Hazardous Water</i>	<i>Safety Kleen<sup>a</sup></i>		<i>825</i>
<i>Treated Non-Haz Water</i>	<i>Dynecol</i>	<i>Detroit, MI</i>	<i>150,700</i>
<i>Treated Non-Haz Water</i>	<i>Battle Creek POTW</i>	<i>Battle Creek, MI</i>	<i>1,968,700</i>
<b>Total</b>			<b>17,851,445</b>

*Shaded and italicized items are discontinued waste streams.*

† Cumulative quantities may not reconcile with previous reports (due to auditing).

a New Age lab water and methanol mix generated by mobile laboratory.

**Table 3 – Estimated Recovered Oil (as of 08/18/2014)**

Waste Stream Containing Recovered Oil	Destination Company	Destination Location	Estimated Oil Volume in Waste Stream (gallons)
<b>Soil - Sediment</b> Impacted Soil & Debris	C&C Landfill	Marshall, MI	28,883*
	Envirosafe/ Westside RDF	Oregon, OH	278,665
<i>Geotube Sediment - (Impacted Sediment)</i>	<i>Envirosafe/ Westside RDF</i>	<i>Oregon, OH</i>	<i>1,298</i>
<b>Debris</b> - (Roll Off Boxes with Impacted Sorbents, boom, pads, plastic, PPE, vegetation, and biomass)	EQ Michigan	Belleville, MI	62,535*
<i>Frac Tank City - Influent to Carbon Filtration System</i>	<i>C&amp;C Landfill</i>	<i>Marshall, MI</i>	<i>8,109</i>
<b>Water</b>	Dynecol	Detroit, MI	46,183
	Liquid Industrial Waste Services, Inc.	Kentwood, MI	
	Plummers Env. Inc.	Holland, MI	
	BC POTW	Battle Creek, MI	
<i>Ceresco Pretreatment System</i>	<i>C&amp;C Landfill</i>	<i>Marshall, MI</i>	<i>90</i>
<i>A-1 Pretreatment System</i>	<i>C&amp;C Landfill</i>	<i>Marshall, MI</i>	<i>9</i>
<i>Oily Water - RPP</i>	<i>Enbridge Facility</i>	<i>Griffith, IN</i>	<i>766,288</i>
<b>Total</b>			<b>1,192,061</b>

Shaded and *italicized* items represent discontinued waste streams.  
 \*Total updated for analytical received after report generation

**Table 4 – Samples Collected By Enbridge**

Sample Type	Total	August 2014													
		16	15	14	13	12	11	10	9	8	7	6	5	4	3
Surface Water	0	0	0	0	0	0	0	0	0	0	0	0	0	0	0
Private Well	0	0	0	0	0	0	0	0	0	0	0	0	0	0	0
Groundwater	26	0	0	1	0	4	4	0	0	0	7	0	9	1	0
Sediment	0	0	0	0	0	0	0	0	0	0	0	0	0	0	0
Soil	10	0	0	6	3	0	0	0	0	0	0	1	0	0	0
Product	0	0	0	0	0	0	0	0	0	0	0	0	0	0	0
Dewatering	26	0	0	0	12	0	0	0	0	0	14	0	0	0	0
Sheen	0	0	0	0	0	0	0	0	0	0	0	0	0	0	0

**Table 5 – Public Inquiries Received by Enbridge**

Location/Med	August 2014															
	15	14	13	12	11	10	9	8	7	6	5	4	3	2		
Marshall Community Center	0	0	0	0	0	0	0	0	0	0	0	0	0	0	0	
Oil Spill Public Information Hotline	0	0	0	0	0	0	0	0	0	0	0	0	0	0	0	
Website	0	0	0	0	0	0	0	0	0	0	0	0	0	0	0	
<b>Total Public Inquiries</b>	<b>0</b>	<b>0</b>	<b>0</b>	<b>0</b>	<b>0</b>	<b>0</b>	<b>0</b>	<b>0</b>	<b>0</b>	<b>0</b>	<b>0</b>	<b>0</b>	<b>0</b>	<b>0</b>	<b>0</b>	

**Table 6 - Financial Summary (as of 08/17/2014)**

Item	Expended (Cumulative)
<b>ERRS Contractors</b>	
<i>EQM (EPS50802)</i> T057	\$ 1,199,522
	T060 \$ 213,636
<i>LATA (EPS50804)</i> T019	\$ 1,161,082
<i>ER LLC (EPS50905)</i> T040	\$ 683,330
<b>Total ERRS Contractors</b>	<b>\$ 3,257,571</b>
<b>Other Contractors</b>	
<i>Lockheed Martin (EPW09031) – TAGA Support</i>	\$ 198,379
<i>Lockheed Martin (EPW09031) -Biodegradability Study</i>	61,917
<i>T&amp;T Bisso (EPA:HS800008)</i>	\$ 882,087
<b>Total Other Contractors</b>	<b>\$ 1,142,383</b>
<b>START Contractor – WESTON (EPS50604)</b>	
T030-Response	\$ 39,758,439
Community Relations	\$ 114,563
T032-Sampling	\$ 161,045
T037-Doc Support	2,074,012
<b>Total START Contractor</b>	<b>\$ 42,108,059</b>
<b>Response Contractor Sub-Totals</b>	<b>\$ 46,514,685</b>
<b>U.S. EPA Funded Costs: Total U.S. EPA Costs</b>	<b>\$ 7,153,628</b>
<b>Pollution Removal Funding Agreements</b>	
Total Other Agencies	\$ 3,637,081
Indirect Cost (16.00%)	\$ 3,520,519
Indirect Cost (8.36%)-payments after 10/1/2011	\$ 1,310,859
Indirect Cost (10.15%)-payments after 10/1/2012	\$ 1,577,626
Cost Documentation/Billing Admin Fee (2.93%)*	\$ 689,213
<b>Total Est. Oil Spill Cost</b>	<b>\$ 63,635,037</b>
<b>Oil Spill Ceiling Authorized by USCG</b>	<b>\$ 69,250,000</b>
<b>Oil Spill Ceiling Available Balance</b>	<b>\$ 5,614,963</b>

Shaded and *italicized* items are discontinued

\* Effective on EPA Enbridge costs billed to USCG for bills issued after 6/5/12.

**Table 7 - Personnel On-Site**

Agency/Entity	August 2014													
	17	16	15	14	13	12	11	10	9	8	7	6	5	4
U.S. EPA	0	0	3	3	3	3	3	0	0	2	3	3	3	3
START	0	6	13	13	13	13	13	1	8	14	14	14	14	14
MDEQ	0	0	2	2	3	2	2	0	0	4	8	7	7	7
MDEQ Contractors	0	0	0	1	2	2	2	0	1	0	2	2	1	2
Other Agencies	0	2	2	2	2	2	21	0	2	2	2	3	3	3
Enbridge –Water Ops*	0	0	2	2	2	2	2	0	0	2	2	2	2	2
Enbridge –Delta/Morrow Lake*	5	96	108	106	118	107	109	6	100	117	115	118	121	117
Enbridge – Waste Management*	0	0	0	0	0	0	0	0	0	0	0	0	0	0
Enbridge – Office Support*	3	15	32	33	35	35	32	5	15	33	40	39	40	39
<b>Total</b>	<b>8</b>	<b>119</b>	<b>162</b>	<b>162</b>	<b>178</b>	<b>166</b>	<b>184</b>	<b>12</b>	<b>126</b>	<b>174</b>	<b>186</b>	<b>188</b>	<b>191</b>	<b>187</b>

\*Enbridge Operations and Field include Enbridge and contractors as reported by Enbridge