

US EPA ARCHIVE DOCUMENT

## US EPA ARCHIVE DOCUMENT



## US EPA ARCHIVE DOCUMENT



US

**To:** Lt. Paul Baker, Kalamazoo County Sheriff's Office  
 James Rutherford, Calhoun County Public Health Department  
 Durk Dunham, Calhoun County Emergency Management  
 Brian Whitsett, Michigan State Police, Emergency Mgt.  
 Greg Danneffel, MDNRE  
 Mike McKenzie, City of Battle Creek  
 Leon Zupan, Enbridge  
 Susan Hedman, U.S. EPA Regional Administrator  
 Rebecca Humphries, MDNRE  
 Jim Sygo, MDNRE  
 Connie Gibson, Calhoun County Sheriff's Office  
 Cheryl Vosburg, City of Marshall  
 David Chung, U.S. EPA  
 Jason El-Zein, U.S. EPA  
 Michael Chezik, U.S. Department of Interior  
 Linda Nachowicz, U.S. EPA  
 OSLTF USCG, USCG  
 Bruce Vanotteren, MDNRE  
 Brian Pierzina, PHMSA Central Region

**From:** Ralph Dollhopf, U.S. EPA Incident Commander  
 Stephen Wolfe, U.S. EPA On-Scene Coordinator  
 Jeff Kimble, U.S. EPA Deputy Incident Commander  
 Mark Durno, U.S. EPA Deputy Incident Commander

**Date:** 10/05/2010

**Reporting Period:** 0700 hours 10/03/2010 to 0700 hours 10/05/2010

## **1 Introduction**

### **1.1 Background**

#### **1.1.1 Site History**

##### **Background Information**

**Site Number:** Z5JS

**D.O. Number:**

**Response Authority:** OPA

**Response Lead:** PRP

**NPL Status:** Non-NPL

**Mobilization Date:** 7/26/2010

**Demob Date:**

**CERCLIS ID:**

**ERNS No.:**

**FPN#:** E10527

**Contract Number:**

**Action Memo Date:**

**Response Type:** Emergency

**Incident Category:** Removal Action

**Operable Unit:**

**Start Date:** 7/26/2010

**Completion Date:**

**RCRIS ID:**

**State Notification:**

**Reimbursable Account**

#### **1.1.2 Preliminary Site Inspection and Response Activities**

See SITREP #51 for a comprehensive description of preliminary operations.

## **1.2 Incident Objective and Command Emphasis**

The following incident objectives and command emphasis are taken from the IAP for the Operational Period October 04, 2010, at 0700 to October 08, 2010, at 0700.

### Incident Objectives

1. Ensure health and safety of the public and response and recovery personnel.
2. Ensure effective transition of regulatory oversight of the oil impacted areas from EPA to MDNRE jurisdiction as appropriate.
3. Maintain the isolation of the Kalamazoo River from up-gradient source area.
4. Contain and recover oil and contaminated vegetation in Talmadge Creek and Kalamazoo River.
5. Maintain effective unified communications with cooperating and assisting agencies and the public.
6. Perform remediation and restoration of all affected public and private areas of river and river systems.
7. Provide protection of environmentally and culturally sensitive areas including wildlife and historic properties.
8. Protect threatened and endangered species and continue to recover and rehabilitate injured wildlife.
9. Continue to collect, coordinate, manage, and communicate environmental and public health data including maintenance of Joint Information Center function.

### Command Emphasis

1. Maintain systematic and adequate DECON/demobilization of project resources.
2. Continue recovery of submerged oil and sediment in the Kalamazoo River with prioritization of the Ceresco Dam and Millpond areas.
3. Complete necessary grade restoration and stabilization work along Talmadge Creek in accordance with the approved plans.
4. Continue implementation of transition to long-term operation and maintenance of containment and submerged oil recovery.
5. Continue messaging on project status and next steps for public awareness.

## **2 Current Activities**

### **2.1 Operations Section**

#### **2.1.1 Narrative**

The command Objectives and Emphasis for this reporting period focused on Operations and Maintenance, Decon/Demob, and responding to areas identified as requiring further action. Operations is assessing areas of submerged oil, inspecting and evaluating O&M progress, addressing areas of concern, and installing containment measures as approved in the work plan. For a detailed account of work assigned as well as the operations section organization structure, see the IAP for the operational period October 04 to October 08.



## 2.1.2 Oil Recovery and Cleanup Operations and Maintenance Branch

### Containment and Recovery Operations and Maintenance Task Force

This task force operates from Ceresco Dam to Morrow Lake and is responsible for responding to areas of concern requiring monitoring, cleanup, boom deployment/recovery, and staging waste/debris for disposal.

The Containment and Recovery O&M Task Force reported the following:

- Removed debris from collection point immediately above 15 Mile road at MP2.25.
- Several areas that were not exhibiting sheen are recommended for re-inspection after the next heavy rain.
- Aeration and agitation operations off the right descending bank (RDB) at MP5.75 just downstream of 12 Mile Road Bridge continue.
- Skimming operations above Ceresco Dam continue.
- Conducted O&M activities along the Kalamazoo River in accordance with the advance copy of O&M Identified Areas Work Plan.
- EPA inspected eleven O&M areas and advised Enbridge of areas in need of attention.

### Shoreline and Overbank Operations and Maintenance Task Force

This task force operates throughout the response area and is responsible for completing the activities as outlined in the O&M list and updating the O&M list as tasks are completed.

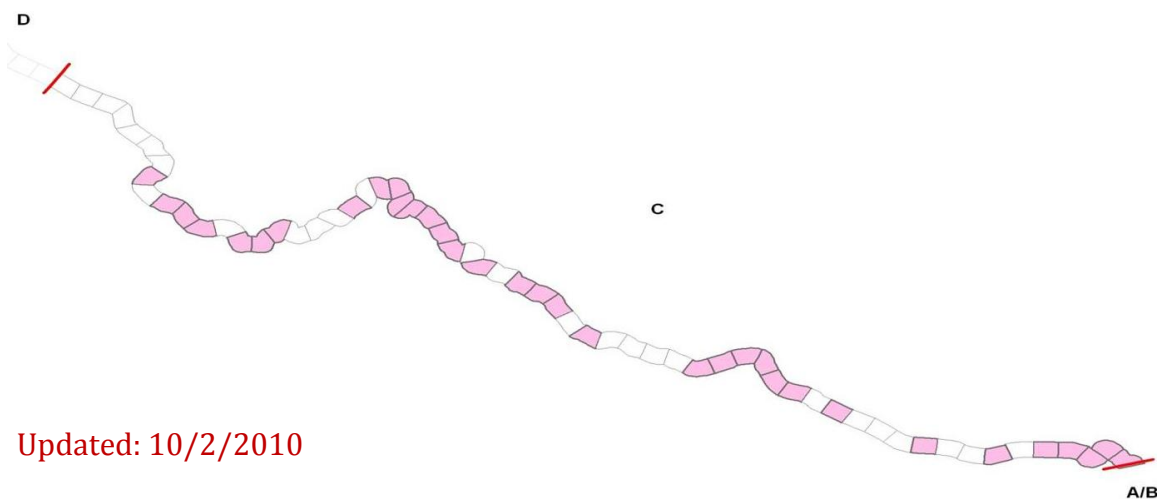
The Shoreline and Overbank O&M Task Force reported the following:

- Temporary dewatering of ponded water, removal of oil and contaminated soil, and soil scraping on the left descending bank (LDB) at MP4.5 (Lily Pad).
- Revegetation activities on Island E.
- Conducted O&M activities along the Kalamazoo River in accordance with the Kalamazoo River in accordance with the advance copy of O&M Identified Areas Work Plan.
- Conducted containment and recovery O&M along the LDB at MP13.5-13.75. EPA and MDNRE have determined that no additional excavation will be needed.
- Subsurface installation of geo fabric to prevent contaminant leaching and migration along the shoreline at MP13.25 in the exploratory trenches. O&M operations in this area are ongoing.

The O&M maintenance and monitoring areas are outlined in Table 1 and depicted in Figures Figure 1 - Figure 3.

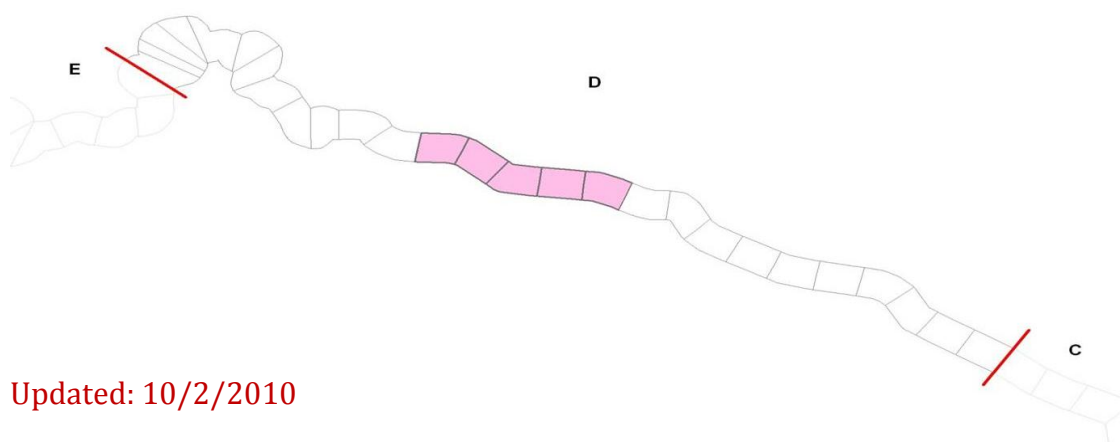
**Table 1 – O&M Maintenance and Monitoring Areas**

Restoration Step		Percent Complete	Number of Sites	Total at Completion
1. Active Site		100%	40	40
2. Clean up complete		0%	0	40
3. Cleared		0%	0	40
4. Signed Off		0%	0	40



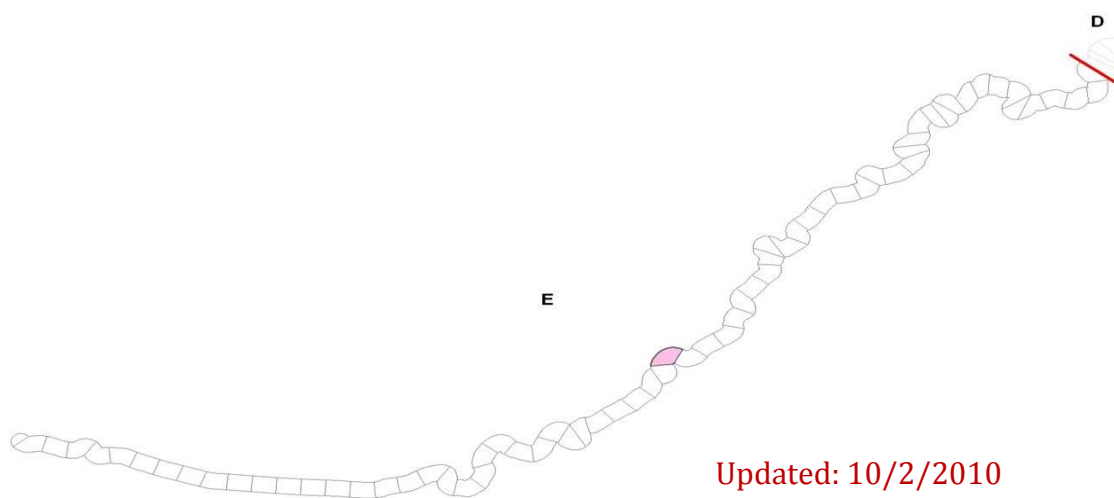
Updated: 10/2/2010

Figure 1 – Division C O&M Maintenance and Monitoring Areas



Updated: 10/2/2010

Figure 2 - Division D O&M Maintenance and Monitoring areas



Updated: 10/2/2010

Figure 3 - Division E O&M Maintenance and Monitoring areas

### Source Area and Talmadge Creek Operations and Maintenance Task Force

This task force operates from the source area to the confluence of Talmadge Creek and the Kalamazoo River and is responsible for the restoration and stabilization of Talmadge Creek and the removal of unnecessary infrastructure throughout Divisions A and B.

The Source Area and Talmadge Creek O&M Task Force reported the following:





- Backfilling, restoration, and installation of erosion control matting continues throughout Divisions A and B.
- Placement of straw in areas where mat roads are being removed.
- Vacuum truck removal of sediment from creek bed at Location A6.
- Installation of silt fences at Location B2.7.
- Dewatering and long stick vacuum operations at the ponds at Location B4.5 where sheen and product were observed.
- Deployment of gabion baskets and silt fencing at the confluence.
- Hay bale silt fencing at Location B4.7

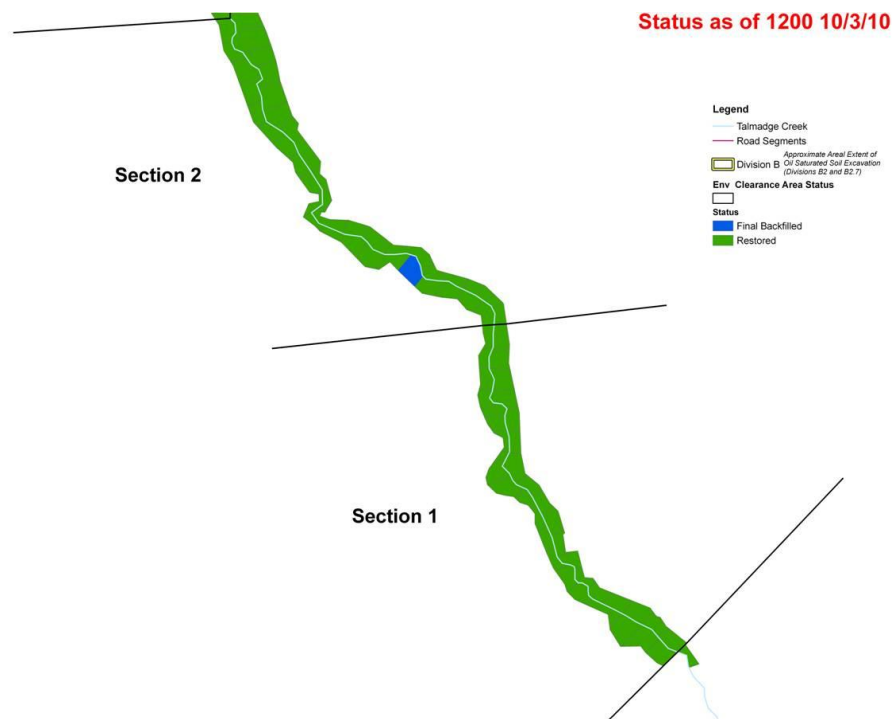
The clean up and restoration phase for Talmadge Creek is being tracked using a four-step process:

1. Prepped - Six-hour trench /pit observation and EPA evaluation of trench/pit and preparation in progress. Forty-eight hour observation trench/pit where applicable.
2. Cleared - EPA evaluation completed and section ready for backfill.
3. Backfilled - Initial backfill/stabilization completed. Forty-eight hour observation trench/pit where applicable.
4. Restored - Section complete.

The progress of the restoration is outlined in Table 2 and is depicted in Figure 4 – Division A, Section 1 and 2 (Location A4 to B2) through Figure 8.

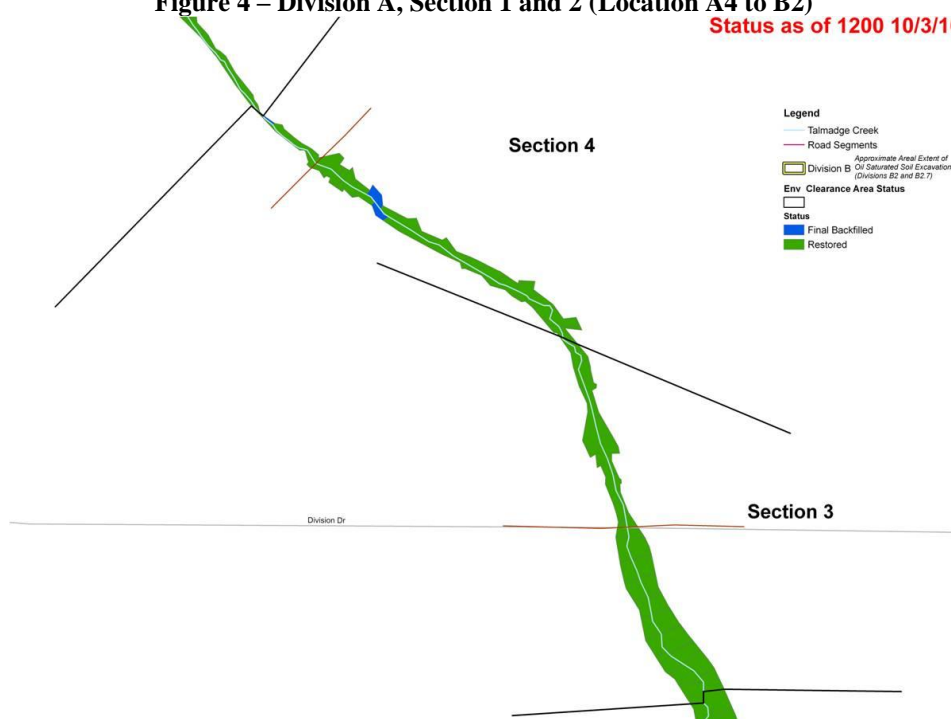
**Table 2 - Division A and B, Sections 1-10**

Restoration Step		Percent Complete
1. Prepped		100%
2. Cleared		100%
3. Backfilled		100%
4. Restored		95%



**Figure 4 – Division A, Section 1 and 2 (Location A4 to B2)**

Status as of 1200 10/3/10



**Figure 5 - Division B, Section 3 and 4 (Locations B2 to B2.5)**





Figure 6 - Division B, Sections 5 and 6 (Locations B2.5 to B4)

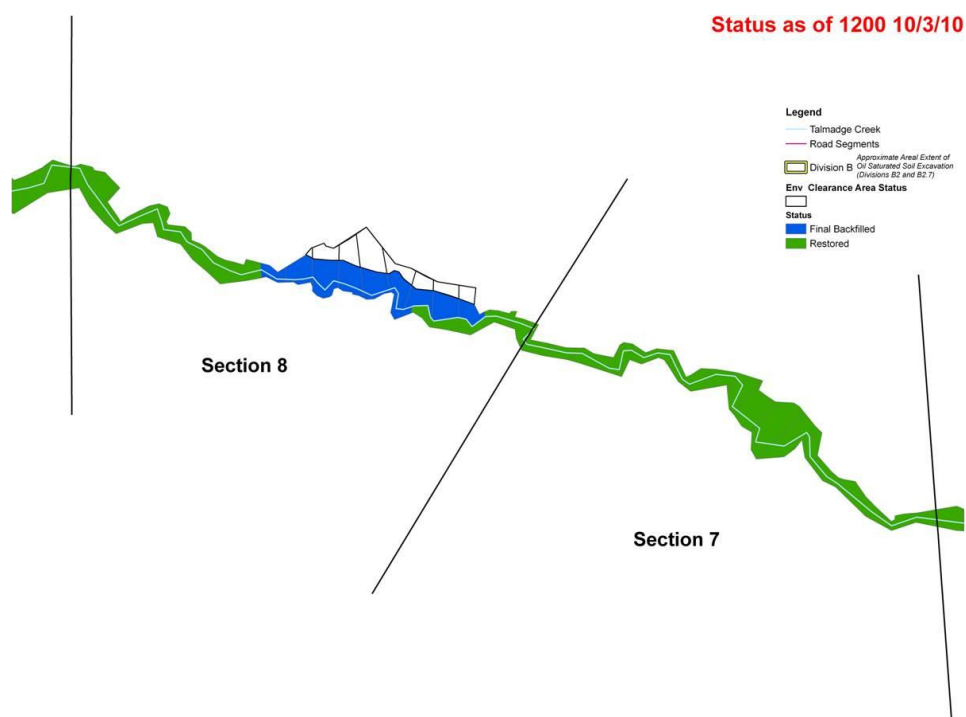


Figure 7 - Division B, Sections 7 and 8 (Locations B4 to B4.8)

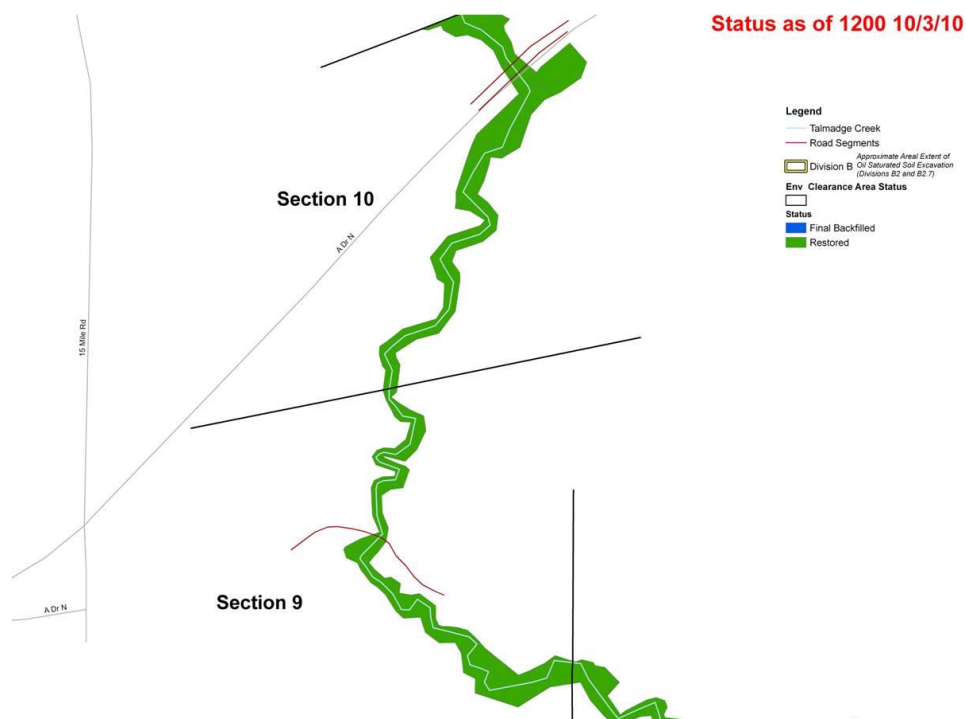


Figure 8 - Division B, Section 9 and 10 (Locations B4.9 to B5)

### 2.1.3 Oil Recovery and Cleanup Submerged Oil Branch

#### Ceresco Dam Dredging Task Force

This task force operates in the vicinity of the Ceresco Dam and is responsible for conducting cleanup and dredging operation.

The Ceresco Dam Dredging Task Force conducted operations in accordance with the IAP. Dredging progress is outlined in Figure 9.

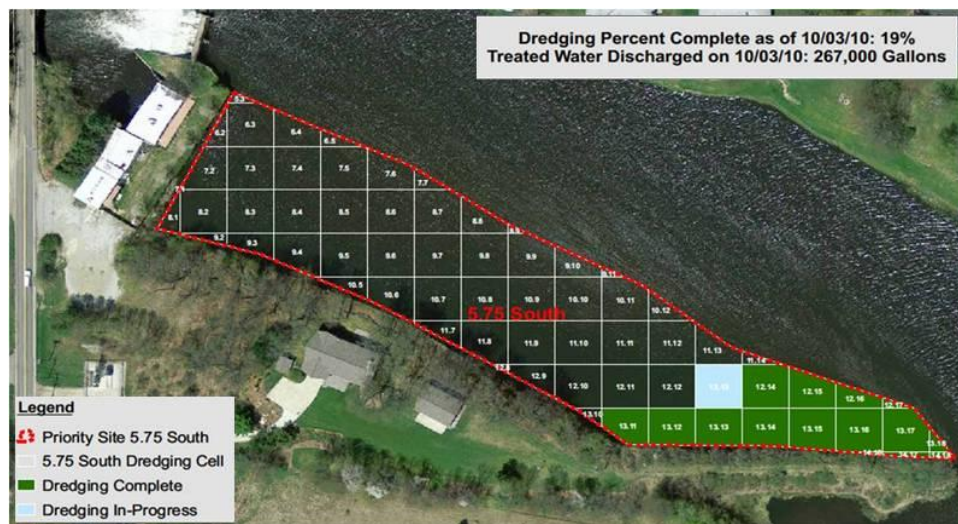


Figure 9 – Dredging Progress

### Submerged Oil Recovery Task Force

This task force operates throughout the response area with the exception of the area in the vicinity of Ceresco Dam and is responsible for initiating cleanup activities at priority sites identified by the Submerged Oil Task Force (SOTF) and approved by the USEPA and Enbridge.

Changes to priority area status and operations reported by Enbridge and EPA during this SITREP period are outlined in Table 3. Submerged Oil cleanup sites are depicted in Figure 10.

**Table 3 – Priority Area Status and Operations**

<b>Location</b>	<b>Habitat/Vegetation Value</b>	<b>Current Operations</b>	<b>Recovery Status</b>	<b>EPA Inspection Status</b>
MP1.65 (B4.5 ponds)	Low	Dewatering and vacuum extraction	Ongoing	-
MP4.53	-	Recovery options under review	-	-
MP5.31	-	Recovery options under review	-	-
MP5.55	-	Aeration completed, dredging pending	Ongoing	-
MP5.63	-	Aeration completed, dredging pending	Ongoing	-
MP5.75	-	Aeration completed, dredging pending	Ongoing	-
MP7.75	Low	None	Complete	Approved
MP5.81	-	Aeration planned	Pending	-
MP12.5	Sensitive	None	-	-
MP14.75	Low	None	Complete	Approved
MP15.25 (Mill Pond)	Sensitive	Area boomed, recovery options under review	Pending	-
MP15.5 (Mill Pond)	Sensitive	Area boomed, recovery options under review	Pending	-
MP21.5	Sensitive	None, recovery options under review	Pending	-
MP26.0	Low	None	Complete	Ready
MP26.25	Low	Shallow recovery / raking, water flushing, and debris removal	Ongoing	-
MP26.65	Low	None	Complete	Approved
MP27.9	Low	None	Complete	Approved
MP28.25	Low	None	Complete	Ready
MP33.25	Low	None	Complete	Approved
MP36.25	Sensitive	Area boomed, No operations planned	-	-

Location	Habitat/Vegetation Value	Current Operations	Recovery Status	EPA Inspection Status
MP36.5 to MP37.5 (Morrow Lake Delta)	Sensitive	Area boomed, recovery options under review	Pending	-

**Table 4 - Submerged Oil Cleanup Status**

Submerged Oil Cleanup	Percent Complete	Number of Sites	Total at Completion
Assessment	100%	20	20 <sup>a</sup>
Containment	100%	18	18
Work Plan	100%	18	18
Cleanup	50%	9	18
EPA Division Supervisor Sign-Off (Step 5)	33%	6	18

<sup>a</sup> - After assessment, it may be determined that submerged oil is not present and no further activity is required.



**Figure 10 - Submerged Oil Cleanup Sites**

#### 2.1.4 Environmental Compliance and Oversight Branch

##### Source Area/Talmadge Creek

This group is responsible for the oversight of the mat removal and restoration throughout Talmadge Creek.

The Source Area/Talmadge Creek group reported operations consistent with the IAP.

##### Waste Management Transportation and Disposal Group

This group is responsible for the oversight of the characterization, manifesting, and disposal of waste generated from the response and clean up activities.

The Waste Management T&D group reported the following:

- Inspected soil dredging staging area to ensure compliance with the Waste Management Plan for Dredging Operations.
- EPA Requested updated TPH tables from Enbridge. No update was received last Monday.
- Continued to perform audits of manifests, weight tickets, and bills of lading.

### 2.1.5 Monitoring Branch

This group is responsible for all SOTF activities, conducting the Hydrogeological Investigation as outlined by the Sampling and Analysis Plan, and collecting sediment, air, surface water, dredge water, and potable water samples.

The Monitoring Branch reported the following:

- Collected multiple sediment and surface water samples.
- Air monitoring conducted near oil collection sites, excavation operations, and community areas including Baker Mobile Park. No readings in excess of the background were reported.
- 16 duplicate UltraRAE and MultiRAE samples, and one split sample was collected from Division C.
- Sampling was not conducted on Morrow Lake or in the Morrow Lake Delta on Sunday due to a safety stand-down. Sampling activities were resumed 0800 on October 4. The Kalamazoo County Sheriff Marine Patrol will be on Morrow Lake to ensure that hunting activities do not interfere with operations.
- Real-time air monitoring around Ceresco Dam and the surrounding residential community was conducted.

### Submerged Oil Task Force

This Task Force operates throughout the response area and is responsible for evaluating sediments to identify areas of submerged oil, evaluating the efficiency of proposed remedial options, and implementing and documenting cleanup in designated areas.

The SOTF reported the following:

- No SOTF activities were reported for Sunday, October 3. No sediment cores were logged.
- Poling of multiple locations in Division C and in the Morrow Lake Delta.
- Surveyed boom locations in several areas.
- Continued documentation of aeration work at Ceresco Dam and at the Mill Pond.

**Table 5 – Samples Collected (as reported by Enbridge)**

Sample Type	Number Collected 10/03	Number Collected 10/04
Air Monitoring	Not Reported by Enbridge	Not Reported by Enbridge
Surface Water	11	20
Private Well Samples	2	4
Sediment Samples	2	17
Soil Samples	0	0

Sheen Samples	0	0
Other	0	0
Vertical Water Column Samples	0	0

**Table 6 – Samples Documented in SCRIBE (as reported by EPA)**

Media	Sample Type	Number Collected 10/03	Number collected 10/04
Air	Monitoring Locations	92	103
Air	Tedlar Bags	0	0
Air	Summa Canister	0	0
Sediment	Grab	0	0
Surface Water	Grab	0	1

### 2.1.6 Air Ops Branch

The Air Ops Branch is comprised of representatives from EPA and Enbridge and is responsible for conducting daily overflights of the entire response area and reporting any relevant observations. The Air Ops Branch reported the following:

- During this operational period, there were 2+ overflights.
- Air Ops observed and documented cleanup and restoration progress in all operational areas.
- Air Ops continued to investigate areas of interest and report on hot spots, oil mobilization, O&M, and DECON.

### 2.1.7 Additional Operations

The DECON Branch, Wildlife Environmental Damage Branch, and Air Operations conducted activities in all Divisions.

#### DECON Branch

The DECON branch predominantly operates out of four major DECON areas (Frac Tank City, C0.5 DECON Site, Division A DECON Site, and Yard 4).

The DECON Branch reported the following:

- Inspected the four major DECON locations. Checklists were completed for each.
- Investigated reports that a vac truck had accidentally lost ½ its load while driving around the site.
- EPA observed that workers appeared to be working in areas before proper DECON stations are set up. Enbridge has been informed and is responding.

#### Wildlife Environmental Damage Branch

The Wildlife Environmental Damage Branch is responsible for capturing, cleaning, caring, and releasing impacted wildlife and providing turtle capture points to the GIS for mapping. The Wildlife Environmental Damage Branch operates throughout the response area and beyond.

The Wildlife Environmental Damage Branch reported approximately 398 animals in care and 1791 animals released as of October 4.



## 2.1.8 Progress Metrics

All progress metrics in Section 2.1.8 are as reported by Enbridge unless otherwise indicated.

### Boom Report

**Table 7 - Boom Report**

<b>Date</b>	<b>10/03</b>	<b>10/04</b>
Number of Locations	19	19
Boom Deployed (feet)	128,345	129,225

### Soil and Debris Waste Tracking

**Table 8 - Soil and Debris Waste Tracking**

<b>Waste Stream*</b>	<b>Quantity Shipped On 10/2</b>	<b>Quantity Shipped On 10/03</b>	<b>Cumulative Quantity Shipped<sup>†</sup></b>
Haz Soil (yd <sup>3</sup> ) <sup>a</sup>	0	0	15,344
Non Haz Soil (yd <sup>3</sup> ) <sup>b</sup>	662	0	35,458
Haz Debris (yd <sup>3</sup> ) <sup>c</sup>	0	0	12,075
Non Haz Debris (ton) <sup>c</sup>	0	0	1,371

\* Information for water (other than daily quantity shipped) is reported in other tables below. Quantity awaiting disposal is estimated.

† Due to the auditing of waste manifests, cumulative quantities may not reconcile with previous reports.

a. Haz soil (benzene impacted) is being transported to EnviroSafe (Oregon, OH).

b. Non Haz soil is being sent to Westside Recycling (Three Rivers, MI) and EQ/Republic (Marshall, MI).

c. Roll-off boxes containing waste sorbents, boom, pads, plastic, PPE, and oiled vegetation and biomass are being sent to EQ facility (Michigan Disposal) in Wayne, MI and Republic (Marshall, MI).

### Oil/Water Recovery Tracking:

Note: Some of the values in the tables below have been audited and reconciled by Enbridge and may not correlate with previously reported values.

**Table 9 –Oil water collected by location 10/03/10 0700**

<b>Location</b>	<b>Cumulative Total Collected (gallons)</b>
Division A	5,518,243
Division B	4,574,265
Division C	1,019,450
Division D	119,850
Division E	50,030
DECON	283,810
Other Locations <sup>*</sup>	239,283
<b>TOTAL</b>	<b>11,804,931</b>

\* Includes Frac, DECON, and Wildlife Center.

**Table 10 - Oil water Separation 10/04/10  
Oil-Water - Enbridge Facility in Griffith,  
IN Facility (gallons)**

Oil	758,756
Other Material	1,400,050
<b>TOTAL</b>	<b>2,158,806</b>

**Table 11 - Oil/Water Volume Summary (Gallons)**

Oil/Water Collected	11,804,931
Oil/Water Shipped Off-site	10,498,314
<b>OIL/WATER REMAINING ON-SITE</b>	<b>1,306,617</b>

**Table 12 – Liquid Shipped Off-site**

<b>Oil/Water leaving Site</b>	<b>Destination</b>	<b>Daily Quantity Shipped (Gallons)10/02</b>	<b>Daily Quantity Shipped (Gallons)10/03</b>	<b>Cumulative Quantity Shipped (Gallons)†</b>
Haz Water	Dynecol, Detroit, MI	7,800	8,700	2,424,948
Oil/Water	Enbridge Facility, Griffith, IN	0	0	2,158,806
Treated Non Haz Water	Liquid Industrial Waste Services, Holland, MI	0	0	370,200
Treated Non Haz Water	Plummer, Kentwood, MI	0	70,000	3,430,635
Haz Water	Safety Kleen <sup>a</sup>	0	0	825
Treated Non Haz Water *	Dynecol, Detroit, MI	0	0	134,200
Treated Non Haz Water *	Battle Creek POTW	0	0	1,968,700
<b>Totals</b>		<b>7,800</b>	<b>78,700</b>	<b>10,488,314</b>

\* Treated Non Haz Water no longer sent to this location.

† Due to the auditing of waste manifests, cumulative quantities may not reconcile with previous reports.

a. New Age lab water and methanol mix generated by mobile laboratory.

## 2.2 Planning Section

### 2.2.1 Situation Unit

#### Data Management Unit/GIS Unit

- Continued to process surface water data, import preliminary and validated analytical results into Scribe, and process maps as requested.
- Assisted with data organization and mapping of benzene monitoring results at Ceresco Dam.
- Technical issues prevented the export of scribe data to various entities. Technical support has been contacted and is working to resolve the issue. It is unlikely that the issue will be resolved in the next 24 hours.

### 2.2.2 Environmental Unit

- Conducted site walk at Location B4.5.

#### Public Health

- No new activities were reported.

### 2.3 Anticipated Activities for Next Reporting Period

The next reporting period (SITREP #62) will cover October 5, 2010 0700 to October 7, 2010 0700. Operations will be focused on the submerged oil cleanup (hot spots are being identified and addressed through a punch list process). Additionally, the focus remains on DECON/demobilization and restoration.

### 2.4 Logistics Section

- Coordinated with various other units within the ICS to ensure smooth operations.

### 2.5 Safety Reports

- EPA and Enbridge safety reported no major injuries and only minor PPE infractions.
- Gunshots and hunting activities were noted in proximity to sampling activities at Morrow Lake. A safety stand down was implemented in the area of Morrow Lake for weekend activities.
- Significant improvements made to E0.5 Decon area.
- Inspected and made recommendations on several field DECON stations.

### 2.6 Liaison Officer

- Engaged in ongoing coordination with cooperating and assisting agencies, the UC, Enbridge, and the PIO.
- Met with local tribes to discuss the establishment of wild rice beds as part of the restoration of the Kalamazoo River.

### 2.7 Information Officer

- Coordinated with Region 5 Public Affairs on planning for October 14 meeting.
- Enbridge reported public inquiries as outlined in Table 13.

**Table 13 – Public Inquiries**

	<b>10/02</b>	<b>10/03</b>
Battle Creek Community Center	1	1
Marshall Community Center	3	0
Oil Spill Public Information Hotline	6	1
Enbridge Response Website	1	1
Total Public Inquiries/Claims	11	3

### 2.8 Finance Section

The current NPFC issued ceiling was \$21.6 million. Approximately 89.8% of the ceiling had been spent through October 3, 2010 (see burn rates below). These cost summaries reflect only EPA-funded expenditures for the incident.

**Table 14 - FPN E10527 - Enbridge Pipeline Oil Spill**

<b>ERRS Contractors</b>		<b>Est. Expended</b>	<b>Est. Burn Rate (10/3/10)</b>	<b>Est. Burn Rate (10/02/10)</b>
EQM (EPS50802)	T057	\$1,250,065	0	0
	T060	204,905	0	0
LATA (EPS50804)		1,451,396	0	0
ER LLC (EPS50905)		723,669	0	0
<b>ERRS Contractors</b>		\$3,630,035	0	0
Lockheed Martin (EPW09031)		150,000	0	0
T&T Bisso		1,255,000	0	0
START Contractor				
WESTON (EPS50604)		6,487,298	49,102	40,587
Response Contractor Sub-Totals		\$11,481,746	49,102	\$40,587
EPA Funded Costs:				
Total EPA Costs		3,742,403	30	30,200
Pollution Removal Funding Agreements:				
<b>Total Other Agencies</b>		\$1,342,669		\$3,840
Sub-Totals		\$16,566,818		\$74,627
Indirect Cost (16.00%)		2,650,691		11,940
<b>Total Est. Oil Spill Cost</b>		\$19,217,509		\$86,567

## 2.9 Response Actions to Date

Response Actions to date may be found in Situation Reports #1 through #61.

## 3 Participating Entities

### 3.1 Unified Command

U.S. EPA  
MDNRE  
Michigan State Police Emergency  
Management Division  
City of Battle Creek

Calhoun County Public Health Department  
Calhoun County Emergency Management  
Kalamazoo County Sheriff  
Enbridge (Responsible Party)

### 3.2 Cooperating and Assisting Agencies

ATSDR  
Calhoun Conservation District  
Calhoun County Commission

City of Kalamazoo  
City of Marshall  
Emmett Township

Fredonia Township  
Kalamazoo County Office of Emergency  
Management  
Marshall Area Firefighters Ambulance  
Authority  
Marshall Police Department  
Marshall Township Government and Fire  
Department

Michigan Department of Agriculture  
MDCH  
NOAA  
Oakland County HAZMAT/RRTN  
PHMSA  
USCG  
U.S. Department of the Interior/USGS  
USFW

### **3.3 Congressional Presence**

State Representative Jase Bolger  
State Representative Kate Segal  
State Representative Ken Kurtz  
State Representative Phil Browne  
State Representative Phyllis Browne  
State Representative Bob Geuck  
State Representative Tanya Schuitmaker  
State Senator Mike Nofs  
U.S. Congressman Mark Schauer  
U.S. Senator Carl Levin  
U.S. Senator Debbie Stabenow

#### 4 Personnel On Site

**Table 15 - Personnel On Site**

Agency/Entity	Numbers Reported 10/3	Numbers Reported 10/4
EPA	26	28
START	33	37
Calhoun County Public Health	1	1
Calhoun County (CC) Sheriff	6	6
City of Battle Creek	3	3
Kalamazoo Sheriff	2	2
MDNRE	6	7
Michigan State Police (MSP)	1	1
NOAA - National Weather	2	1
USFWS	0*	0*
Enbridge ICP	60	55
Enbridge ICP Contractor	281	276
Enbridge	13	16
Enbridge Contractors	732	744
<b>Total</b>	<b>1166</b>	<b>1177</b>

\* Staffing numbers not reported

#### 5 Source of Additional Information

##### 5.1 Additional Information

For additional information, please refer to <http://www.epa.gov/enbridgespill>. For sampling analysis data, please see <http://response.enbridge.com/response/main.aspx?id=13168>.

##### 5.2 Reporting Schedule

SITREPs are now being created every other day and will continue until the UC establishes a different reporting schedule.