

US EPA ARCHIVE DOCUMENT

U.S. ENVIRONMENTAL PROTECTION AGENCY
POLLUTION/SITUATION REPORT
Kalamazoo River/Enbridge Spill - Removal POLREP-SITREP



UNITED STATES ENVIRONMENTAL PROTECTION AGENCY
Region V



Subject: SITREP #38
Kalamazoo River/Enbridge Spill
Z5JS
Marshall, MI
Latitude: 42.2395273 Longitude: -84.9662018

To: Lt. Paul Baker, Kalamazoo County Sheriff's Office
James Rutherford, Calhoun County Public Health Department
Durk Dunham, Calhoun County Emergency Management
Brian Whitsett, Michigan State Police, Emergency Mgt.
Michael Masterson, MDNRE
Kathy Schley, City of Battle Creek
Leon Zupan, Enbridge
Susan Hedman, U.S. EPA Regional Administrator
Rebecca Humphries, MDNRE
Jim Sygo, MDNRE
Connie Gibson, Calhoun County Sheriffs Office
Cheryl Vosburg, City of Marshall
David Chung, U.S. EPA
Jason El-Zein, U.S. EPA
Duty Officer, NRC
Michael Chezik, U.S. Department of Interior
Linda Nachowicz, U.S. EPA
OSLTF USCG, USCG
Jill Slaght, 7th District of Michigan
Ken Brock, 7th District of Michigan
Bruce Vanotteren, MDNRE
Brian Pierzina, PHMSA Central Region
Thomas Hemminger, USCG Grand Haven
Ronna Beckmann, U.S. EPA
Scott Corbin, Allegan County EMA Director

From: Ralph Dollhopf, U.S. EPA Incident Commander
Stephen Wolfe, U.S. EPA On-Scene Coordinator
Jeff Kimble, U.S. EPA Deputy Incident Commander
Mark Durno, U.S. EPA Deputy Incident Commander

Date: 09/01/10

Reporting Period: 1900 hours 08/31/10 to 1900 hours 09/01/10

1. Introduction

1.1. Background

1.1.1. Site History

Background Information

Site Number: Z5JS

D.O. Number:

Response Authority: OPA

Response Lead: PRP

NPL Status: Non NPL

Mobilization Date: 7/26/2010

Demob Date:

CERCLIS ID:

ERNS No.:

FPN#: E10527

Contract Number:

Action Memo Date:

Response Type: Emergency

Incident Category: Removal Action

Operable Unit:

Start Date: 7/26/2010

Completion Date:

RCRIS ID:

State Notification:

Reimbursable Account

1.1.2. Incident Category

Emergency Response -- Pipeline Rupture

1.1.3. Site Description

A 30-inch pipeline ruptured, releasing crude oil (NRC report of 19,500 barrels) into a culvert leading to Talmadge Creek. Talmadge Creek is a tributary to the Kalamazoo River. The response site is along Talmadge Creek and the Kalamazoo River running from Marshall, Michigan, to downstream of Battle Creek, Michigan. The Kalamazoo River is bordered by marshland and developed properties for the approximate 30-mile stretch of the response site.

1.1.4. Preliminary Removal Assessment/Removal Site Inspection Results

Approximately 30 miles of the Kalamazoo River have been impacted. The Kalamazoo River experienced flooding before and after the spill. The river levels later fell and stranded oil in some backwaters, wetlands and floodplains. Talmadge Creek was boomed off at the confluence to the Kalamazoo River. Containment and absorbent boom were deployed along the Kalamazoo River and Talmadge Creek. Containment and absorbent boom also were deployed in Morrow Lake.

1.1.5. Enforcement Activities, Identity of Potentially Responsible Parties

Enbridge is the RP.

On July 27, 2010, EPA issued an Administrative Order under section 311(c) of the Clean Water Act to Enbridge. Enbridge has submitted and EPA has approved the following deliverables required by the Order including but not limited to: *Operational Health and Safety Plan; Pipeline*

Repair Workplan; Sampling and Analysis Plan; Quality Assurance Project Plan; Oil Containment and Recovery Plan; Source Area Remediation Plan; Remediation Plan for Downstream Impacted Areas; and Waste Treatment, Transportation, and Disposal Plan.

1.2. Incident Objective and Command Emphasis

The following incident objectives and command emphasis are taken from the IAP for the Operational Period August 31, 2010, 0700 to September 2, 2010, 0700.

Incident Objectives

- 1) Ensure health and safety of the public and response and recovery personnel.
- 2) Maintain the isolation of Talmadge Creek and Kalamazoo River from the source area.
- 3) Ensure effective transition of regulatory oversight of the oil impacted areas from EPA to MDNRE jurisdiction as appropriate.
- 4) Contain and recover oil and contaminated vegetation in Talmadge Creek and Kalamazoo River.
- 5) Maintain effective unified communications with cooperating and assisting agencies and the public.
- 6) Perform remediation and restoration of all affected public and private areas of river and river systems.
- 7) Provide protection of environmentally and culturally sensitive areas including wildlife and historic properties.
- 8) Protect threatened and endangered species and continue to recover and rehabilitate injured wildlife.
- 9) Continue to collect, coordinate, manage and communicate environmental and public health data including maintenance of Joint Information Center function.
- 10) Obtain input from multi-agency Science Team to help establish protocols to guide cleanup of environmentally impacted areas.

Command Emphasis

- 1) Continue to evaluate and enhance submerged oil monitoring in the Kalamazoo River and at Morrow Lake, including assessment, mapping and development of near and long-term capture and management options.
- 2) Complete final assessment and evaluation of Division A and continue consideration of final assessment process in Division B.
- 3) Complete final clean up, grade restoration, and stabilization work along Talmadge creek.

1.3. Strategic Considerations

- 1) Emphasize need for awareness of local traffic and back-to-school safety considerations across all site work locations.

2. Current Activities

2.1. Operations Section

2.1.1. Narrative

The response site extends from the pipeline break to the dam at the end of Morrow Lake. Operationally, the response has been divided into two Oil Recovery and Cleanup Branches: East and West. These branches have been geographically divided into five Divisions, A through E, with Division A starting at the pipeline break and Division E ending at the western edge of Morrow Lake (see attached map). The East Branch includes Divisions A and B and the West Branch includes Divisions C, D and E. Division C is currently an area of command emphasis and has been further subdivided into four groups performing similar response activities in order to accelerate cleanup progress in that Division. Certain control points are denoted by division letter then control point number (i.e., C3 refers to control point three within Division C). Additionally the entire length of the site is now divided into one-quarter mile sections.

The Unified Command organizational charts (ICS 207 forms) are presented in Figures 1- 4. The ICS 207 Forms describe in detail the work breakdown structure for the response action.

The following activities occurred during the reporting period from 1900 hours on August 31 to 1900 hours on September 1, 2010:

Division A

Division A has extended into the upstream portion of Division B (to the upstream side of Location B2) since the operations required there are more similar to those in Division A than Division B.

Enbridge reported the following:

- Adding mat roads into Location A3.
- Continued work on equipment decon area.
- Hydroseeding in Division A.

EPA observed the following:

- Continuing excavation along both east and west side of Talmadge Creek at Location A6.
- Transportation of soils from Location A6 to an offsite disposal location.
- Standing oil and sheen in numerous pools of water along the west side of Talmadge Creek, and visible sheen along the east side of Talmadge Creek at Location A6.
- Absorbent pads present on the southwest side of the former repair trench.
- New swamp mat road installation in Division A.

Division B

Enbridge reported the following:

- Removal and reinstallation of Flume at Location B5.

- Clean up of hot spots at Locations B4, B4.5, and B5.
- No free product observed in Division B.
- Sheen observed in Location B2 and B5.

EPA observed the following:

- Continuing oil removal by vacuum extraction at Location B2.4.
- Bypass pump at Location B2.7 is no longer in operation and both hydro dams have been removed.
- Backfilling operations continue at Location B2.7.
- Sheen and oil collection at Location B4.5.
- Vegetation removal at Location B5.

USCG observed the following:

- Construction of underflow dam at Location B5.

Division C

Enbridge reported the following:

- Vegetation removal throughout, emphasizing island cleanup activities.
- Maintenance of boom as needed.
- Continuation of sheen recovery operations.
- Skimmer operations continue upstream of Ceresco Dam.
- Shoreline Cleaning operations continue on north side of river at Location C1.
- Personnel and equipment demobed from Location C4 to C3.9.

EPA observed the following:

- Removal of oiled vegetation and remediation of oil pools using snare booms and pom poms on Island E.
- High volume water flushing operations on Island C.
- Removal of vegetation at MP9, MP8.75, MP11, MP11.5, MP14.25, and MP14.5.
- Removal of pooled oil from MP8.75.
- Overbank cleaning activities between MP8 and MP8.25 releasing slight sheen with no booms for containment.
- An approximately 15x25 foot area of pooled oil at MP8.75.
- Overbank cleaning activities at MP13.25 releasing slight sheen with proper boom containment.
- Submerged oil and oil sheen at MP13.5.
- Visible sheen at MP14.25.
- Nine boats each with 2-3 personnel at MP12.25.

EPA took the following actions:

- Completed island assessment of pooled oil on left descending bank of MP4.5 and approved SCAT and Science teams to conduct removal of oil.

- Distributed SCAT books and maps and set up new SCAT Teams.

USCG observed the following:

- Continuing boom maintenance at Location C0.0, C0.5, C4, MP11.25, and MP12.25.
- Shoreline cleanup and vegetation removal at Locations C0.5, C2, C3.2, MP11.0, and MP13.0.
- Pooled oil at Location C1 near top of dam. No sorbent pads in place.

Division D

Enbridge reported the following:

- Boom maintenance at Location D0.5, D1.
- Gabion basket maintenance at Location D2.
- Oily debris collected at Location D2.

EPA observed the following:

- Continued operation and maintenance of both lines of gabion boxes.
- Consolidation of work force and collection points throughout Division D

Division E

Enbridge reported the following:

- Monitoring of existing containment and absorbent booms.
- Implementation of plan to consolidate workers into a single location in Division E and reallocating all unutilized resources into Division C.
- Operation of Decon station for boats and containment boom at E0.5.
- Deployment of 37 gabion baskets to Location E0.5.
- Dismantling of aerator system at Location E3.

EPA observed the following:

- Moderate to widespread sheen in the estuary adjacent to MP37.5.
- Visible sheen at MP33.0 and intermittent sheen in the delta area.

Technical Services Group

EPA observed the following:

- Removal of aeration lines at Location E1.

Branch Operations

In addition to the East and West Recovery Branches, EPA, USCG and Enbridge Operations have five Branches that conduct activities in all Divisions: DECON, Environmental Compliance and Oversight; Monitoring; Wildlife Environmental/Damage Assessment; and Air Ops.

Environmental Compliance and Oversight Branch

Enbridge reported the following:

- Seeding and mulching in Locations A1 to A4.
- Completing soil scraping and documentation in Locations B2 and B5.
- Ongoing oversight and deployment of SCAT teams.

EPA observed or took actions as follows:

- Reviewed booming operations from Morrow Dam to MP34.25.
- Booming strategies from Location C3.2 to MP15.25.
- Inspected the large pooled area at MP11.25. Clean up efforts appear to be complete.
- Observed the island at MP10.75 with approximately 4 bbls of pooled oil and applied peat to pooled oil at island in MP10.75 to test sorbent effectiveness.

Transportation and Disposal

The EPA Transportation and Disposal Team took the following actions:

- Conducted QA/QC review on data presented in the 0830 unified command meeting.
- Conducted QA/QC review on data presented on the EPA website for the Marshall Oil Spill Response.
- Audited manifesting and sampling procedures of EQ at debris site C-3.
- Confirmed waste characterization results in Cells 6 and 12 (Staging Area A and B), and approved soil for disposal.

DECON Branch

Enbridge reported the following:

- Evaluating all existing decontamination operations.
- Construction of central DECON area at Location C0.5.
- Frac Tank City is now conducting Frac Tank cleaning.

EPA reported the following action and observation:

- Continued construction of central decontamination area at location C0.5.
- Continued implementation of frac tank cleaning.

Monitoring Branch

Primary responsibility for air sampling activities was turned over to Enbridge personnel on 08/28/10.

Enbridge reported the following:

- Continuation of air sampling program to collect 24-hour summa mini-can samples, grab samples, and passive dosimeter samples in addition to the real-time air monitoring samples.
- Collection of the following samples:

Table 1. Samples collected 08/31/10

Sample Type	Number collected
Surface Water	27
Vertical Water Column Samples	8
Private Well Samples	9
Sediment Samples	11
Sheen Samples	1
Other	0
Soil Samples	0

EPA reported the following actions or observation:

- Advised Enbridge on laboratory start up, methodologies, and required detection limits.
- Took duplicate air samples at 24 locations with no benzene or other air contaminants detected.

Table 2. Samples Documented in SCRIBE as of 08/31/10

Media	Sample Type	Number collected
Air	Summa Canister	0
Air	Tedlar Bags	1
Air	Monitoring Samples	26
Surface Water	Grab	0
Sediment	Grab	0

Four SCAT teams reported the following:

- Completed collecting SCAT data in Division C and began work in Division D.

Submerged Oil Task Force (Division C, D, and E) reported the following:

- Team A collected 2 core samples for qualitative (visual) analysis and conducted polling at 9 transects.
- Team B collected 5 core samples for qualitative (visual) analysis and conducted polling at 12 transects.
- Confirmed that core logging and cold storage area is set up and operational at Marshall Airport.

Wildlife Damage Assessment Branch

USFWS reported the following observations and operations:

- Provided technical assistance to EPA and Enbridge through the Science Team.
- Assessed the implementation of floodplain cleanup recommendations.
- Assessed the removal of oil residuals in sediment.
- Evaluated shoreline currently implemented and potential shoreline cleaning, fertilizing and controlled burning techniques.
- Collecting ephemeral data for the NRDA.
- Conducted floodplain surveys of percentage of oiling of soils, herbaceous vegetation, shrubs, and trees.
- Developed and publicized a FAQ for goose hunters.
- Evaluating potential new release sites for turtles.
- Observed small fish swimming in Talmadge Creek near Division Road.
- Received permission for heron team to work closed to Ceresco Dam in an effort to capture a known specimen that feeds in the area.
- Captured 40 turtles and released 25 turtles.
- Completed vegetative community survey along work zones. 90 different species were identified.

As of September 1, 2010 at 0700, the wildlife center reported 293 animals in captivity and 498 released to date.

Air Ops Branch

Since August 23, 2010, both the EPA START Situation Unit FOB and Enbridge have been using the Enbridge funded helicopter for their daily over-flights. The EPA helicopter will be available, as needed, for IC and other federal needs.

Enbridge reported observing the following during five over flights:

- Changes in Sheen
 - Boom deployment appeared effective at containing sheen in all areas.
 - Slight broken sheen is visible on delta to Morrow Lake. No visible sheen on the lake.
 - Cleanup activities between Location C0 and C1 have increased and are generating sheen.

- Continuing heavy boom activity at peninsula upstream of Ceresco Dam and at the Dam itself. No sheen visible flowing over the dam.
- Sheen visible and contained with boom at the oxbow. No oil is visible.
- Visible sheen present in the pond below Ceresco Dam.
- Operational Observations
 - Confirmed bladder in place in Talmadge Creek near B2 to convey clean creek flow downstream of culvert.
 - Backfilling and scraping in portions of Location B2.7.
 - Removal of swamp mats and soil scraping operations in Location B5.
 - Active replacement of absorbent pads in Location B5.
 - Maintenance activities on Gabion baskets visible in Division D.
 - Construction of decon/staging area at Location C0.5 continue.
 - Workers actively addressing sheen and oil at Oxbow.
 - Heavy boat and manpower activity continuing in Division C.

EPA observed the following during one over flight:

- Changes in sheen:
 - Less sheen and fewer absorbent pads were observed at the confluence of Talmadge Creek and Kalamazoo River.
 - Sheen near the Peninsula above Ceresco Dam was observed, but notably less than yesterday.
 - Significant sheen, but no oil was evident at MP21.5 in Location D4.5 near Oxbow.
- Operational Observations:
 - Open and shored integrity testing excavations adjacent to repaired pipeline were visible.
 - The area of absorbent pads on the southwest side of the former repair trench was still present.
 - A new swamp mat road was visible in Division A south of the pipeline release point.
 - The covering of soil piles in preparation of the rain.
 - Two excavators conducting shoreline restoration in the scraping area on Talmadge Creek in at Location B2.7.
 - Booming operations at the confluence of Talmadge Creek and the Kalamazoo River appeared similar to previous operational periods, but with fewer absorbent pads covering the boomed area.
 - Additional booms and sorbent pads have been deployed along the northern shore of the river at the peninsula upstream of Ceresco Dam.
 - Heavy activity was apparent at the oxbow area near MP21.5 (Location D4.5). Several crews were visible in the area and absorbent booms and pads had been deployed.

2.1.2 Progress Metrics

All progress metrics in Section 2.1.2 are as reported by Enbridge unless otherwise indicated.

Boom Report

Table 3. Boom Report as of 08/31/2010 1900

Number of Locations	36
Boom Deployed (feet)	108,771

Note: Since the transition of EPA's contractor's to Enbridge at 1900 hrs on 08/12/10, all booms are now controlled by Enbridge.

Soil and Debris Waste Tracking

Table 4. Soil and Debris Waste Tracking as of 08/31/10

Waste Stream	Quantity Shipped (yd ³)	Cumulative Quantity Shipped* (yd ³)
Haz Soil ^a	0	15,344
Non Haz Soil ^b	1437	8041
Haz Debris ^c	0	12,075
Non Haz Debris ^c	104	236

* Information for water (other than daily quantity shipped) is reported in other tables below. Quantity awaiting disposal is estimated.

NA - Not provided by Enbridge

a. Haz (Benzene)-impacted soil is being sent to EnviroSAFE (Oregon, OH).

b. Non-hazardous soil is being sent to Westside Recycling (Three Rivers, MI) and EQ/Republic (Marshall, MI).

c. Roll-off boxes containing waste sorbents, boom, pads, plastic, PPE, and oiled vegetation and biomass are being sent to EQ facility (Michigan Disposal) in Wayne, MI and Republic (Marshall, MI).

Oil/Water Recovery Tracking

Note: Some of the values in the tables below have been audited and reconciled by Enbridge and may not correlate with previously reported values.

Table 5. Oil/Water Collected by Location

Location	Cumulative Total Collected (gallons) (9/01/10 0700)
Division A	4,698,790
Division B	3,150,525
Division C	780,000
Division D	117,825
Division E	51,750
Other Locations ^a	141,000
TOTAL	8,939,890

Table 6. Oil-Water Separation as of 08/31/10 0000

Oil-Water Separation at Tank 1605, Enbridge Facility in Griffith, IN Facility (gallons)	
Oil	729,000
Other	1,508,000
TOTAL	2,237,000

Table 7. Liquid Shipped Off-Site 08/31/10

Oil/Water Leaving Site	Destination	Daily Quantity Shipped (gallons)	Cumulative Quantity Shipped
Haz Water	Dynecol, Detroit, MI	18,437	1,956,450
Treated Non Haz Water ^b	Dynecol, Detroit, MI	0	134,200
Treated Non Haz Water ^c	Battle Creek POTW	0	1,968,700
Treated Non Haz Water ^d	Liquid Industrial Waste Services, Holland, MI	0	332,700
Treated Non Haz Water	Plummer, Kentwood, MI	188,000	1,111,500
Oil/Water	Tank 1605, Enbridge Facility, Griffith, IN	62,000	2,237,000
TOTALS		268,437	7,740,550

^a Includes frac, decon, and Wildlife Center

^b Treated Non Haz Water no longer sent to Dynecol, Detroit, MI

^c Treated Non Haz Water no longer sent to Battle Creek POTW

^d Treated Non Haz Water no longer sent to liquid Industrial Waste Service, Holland, MI

Table 8. Oil/Water Volume Summary (gallons)

Oil/Water Collected ^a	8,939,890
Oil/Water Shipped Off-site ^b	7,742,550
OIL/WATER REMAINING ON-SITE	1,370,227

a. As of 09/01/10 0700

b. As of 08/31/10

2.2. Planning Section

The DMU began a new staffing plan and schedule. Effective on 08/29/10, the DMU will operate from 0700 to 2000. The DMU continued importing preliminary and validated data into SCRIBE. EPA GIS continued the map processing, as requested.

Situation Unit FOB observed the following:

- Division D MP 25.25:
 - SCAT #1 conducted a visual assessment of the left descending bank of the Kalamazoo River.
 - Small isolated masses of tar-like product were observed on plants from MP25.25-25.75.
 - Slight sheen evident in quiescent area where river flow is interrupted by landform.
- Division E4:
 - Booms, silt curtain and sorbent padding are in place off the pier near the boat launch.
 - Two workers in chest waders used rakes to remove floating vegetation captured by the boom. Vegetation showed no presence of oil.
 - Presence of small (1 cm) tar balls floating in water near the pier where workers stood in the water. Workers removed tar balls with a pool skimmer.
 - Visible oil sheen on the water surface where workers stood in the water.
- Division D5
 - Containment booms are across the inlet and outlet of oxbow.
 - Sorbent booms are along the right descending bank and near the outlet.
 - Product evident on sorbent pads at the oxbow inlet.
 - A small pump on the john boat supplies water for bank-washing, however, material flushed from the bank were being drawn in by the pumps, resulting in recirculation of sheen onto shore and little cleaning.

2.2.1. Anticipated Activities for Next Reporting Period

In the next operational period, Operations anticipates final clearance of Division A and bank stabilization in Division B as well as performing the same or similar activities as in the previous operational period, with a focus on activities in Division C.

2.2.2. Issues

There was no Public Health Workgroup meeting today. CCPHD staff attended the science team meeting, SCAT training sessions, and the sinking oil assessment taskforce meeting.

2.3. Logistics Section

EPA Logistics continued to work with Enbridge logistics staff to resolve maintenance problems with trailers at the new ICP on Pratt Avenue. The internet service provider (AT&T) re-established internet service after a 6 hour disruption.

2.4. Finance Section

The current NPFC issued ceiling is \$16 million. Approximately 84.0% of the ceiling has been spent through August 31, 2010, with a burn rate of \$232,960 per day. These cost summaries reflect only EPA-funded expenditures for the incident.

Figure 9.0

FPN E10527 - Enbridge Pipeline Oil Spill

As of: 8/31/2010

ERRS Contractors		Est. Expended	Est Burn Rate (Lastest Daily)
EQM (EPS50802)	T057	\$1,258,770	\$0
	T060	203,934	12,000
LATA (EPS50804)		1,451,396	0
ER LLC (EPS50905)		723,669	0
ERRS Contractors		\$3,637,768	\$12,000
START Contractor			
WESTON (EPS50604)		4,200,093	84,459
Response Contractor Sub-Totals		7,837,861	\$96,459
EPA Funded Costs:			
Total EPA Costs		2,953,524	81,200
Pollution Removal Funding			
US FWS		239,400	2,500
Total Other Agencies		\$968,672	\$26,424
Sub-Totals		\$11,773,498	\$204,083
Indirect Cost (14.15%)		1,665,950	28,878
Total Est. Oil Spill Cost		\$13,439,448	\$232,960

2.5. Safety Officer

Enbridge reported the following:

- Thee reported incidents
 - Two treated with first aid, both have returned to duty as normal.
 - One hospital evaluation for a possible head injury. Patient was released for light duty.

2.6. Liaison Officer

Completed the process of hiring David Bidwell, who will serve as a facilitator for the Environmental Advisory Group.

2.7. Information Officer

PIO continued to develop an action plan to coordinate with the school district about communicating safety issues as it relates to extra vehicles, truck traffic, and school buses for the start of the new school year.

JIC staff operated the media inquiry line and performed media monitoring.

Media Inquiry Line (877-440-7157)

Calls received during reporting period: None

Enbridge reported the following call volume and community center visits:

Oil Spill Public Information Hotline (800-306-6837)

Calls received during reporting period: 66

Community Center Visits: 40

Visits by location during reporting period:

Battle Creek	31
Marshall	09

Enbridge reported that it received 3 inquiries from its www.response.enbridgeUS.com website bringing the total to 535 comments.

2.8. Response Actions to Date

Response Actions to date may be found in Situation Reports 1 through 37

3. Participating Entities

3.1.1. Unified Command

U.S. EPA	Calhoun County Public Health
MDNRE	Department
Michigan State Police Emergency	Calhoun County Emergency Management
Management Division	Kalamazoo County Sheriff
	Enbridge (Responsible Party)
City of Battle Creek	
Cooperating and Assisting Agencies	

3.2. Cooperating and Assisting Agencies

ATSDR	Marshall Police Department
Calhoun Conservation District	Marshall Township Government and Fire Department
Calhoun County Commission	Michigan Department of Agriculture
City of Kalamazoo	MDCH
City of Marshall	NOAA
Emmett Township	Oakland County HAZMAT/RRTN
Fredonia Township	PHMSA
Kalamazoo County Office of Emergency Management	USCG
Marshall Area Firefighters Ambulance Authority	U.S. Department of the Interior/USGS
	USFWS

3.3 Congressional Presence

State Representative Jase Bolger
State Representative Kate Segal
State Representative Ken Kurtz
State Representative Phil Browne
State Representative Phyllis Browne
State Representative Bob Geuck
State Representative Tanya Schuitmaker
State Senator Mike Nofs
U.S. Congressman Mark Schauer
U.S. Senator Carl Levin
U.S. Senator Debbie Stabenow

4 Personnel On Site

Table 10. Personnel On Site 09/01/10

Agency/Entity	Numbers Reported
EPA	43
START	47
Calhoun County Public Health Dept. (CCPH)	1 *
Calhoun County (CC) Sheriff	6
City of Battle Creek	3
Kalamazoo Sheriff	2
MDNRE	10
Michigan State Police (MSP)	1
NOAA - National Weather Service	2
NOAA- NRDA	2
USCG	8
USDA	0
USFWS	9
USFWS Contractors	2
Enbridge	14
Enbridge Contractors	1,377
Total	1,436

* current as of 08/30/10

Enbridge contractors personnel decreased by 401 (23% reduction in size).

Two boat operators were demobilized today from Division C. 42 of the 100 additional personnel requested yesterday were mobilized. Contractors at Locations C3.2, C1.5, C3, and C5 are being demobilized on September 3rd due to a change in contract. Two prime contractors will be established.

Contractor oversight noted that Location C4 staffing went from 42 personnel yesterday to 13 personnel today.

5.0 Definition of Terms

ATSDR	Agency for Toxic Substances and Disease Registry
CCPH	Calhoun County Public Health
CIC	Community Involvement Coordinator
DMU	Data Management Unit
EMT	Emergency Medical Technician
ENVL	Environmental Unit Leader
EPA	Environmental Protection Agency
ERRS	Emergency and Rapid Response Services
ERT	Emergency Response Team
EU	Environmental Unit
FOB	Field Observer
GLNPO	Great Lakes National Program Office
H ₂ S	Hydrogen Sulfide
HASP	Health and Safety Plan
IAP	Incident Action Plan
IC	Incident Commander
ICP	Incident Command Post
IN	Indiana
JIC	Joint Information Center
LEL	Lower Explosive Limit
LNO	Liaison Officer
LSC	Logistics Section Chief
MDA	Michigan Department of Agriculture
MDCH	Michigan Department of Community Health
MDMB	Michigan Department of Management and Budget
MDNRE	Michigan Department of Natural Resources and Environment
MI	Michigan
MIOSHA	Michigan Occupational Safety and Health Administration
MP	Mile Post
NRC	National Response Center
NOAA	National Oceanic and Atmospheric Administration
NPFC	National Pollution Fund Center
OSHA	Occupational Safety and Health Administration
PHMSA	Pipeline and Hazardous Materials Administration
PIO	Public Information Officer
PPE	Personal Protective Equipment
Ppbv	Parts Per Billion Volume
ppm	Parts Per Million
POTW	Publicly Owned Treatment Works
QA/QC	Quality Assurance/Quality Control
RP	Responsible Party
SCAT	Shoreline Contamination Assessment Team
START	Superfund Technical Assessment and Response Team
T&D	Transfer and Disposal
UC	Unified Command
USDA	United States Department of Agriculture
USCG	United States Coast Guard
USDOT	United States Department of Transportation
U.S. EPA	United States Environmental Protection Agency
USFWS	United States Fish and Wildlife Service
yd ³	Cubic Yards
VOCs	Volatile Organic Compounds

6.0 Source of Additional Information

6.1 Additional Information

For additional information please refer to <http://www.epa.gov/enbridgespill.html>. For sampling analysis data, please see <http://www.epa.gov/enbridgespill/data/datawater.html>.

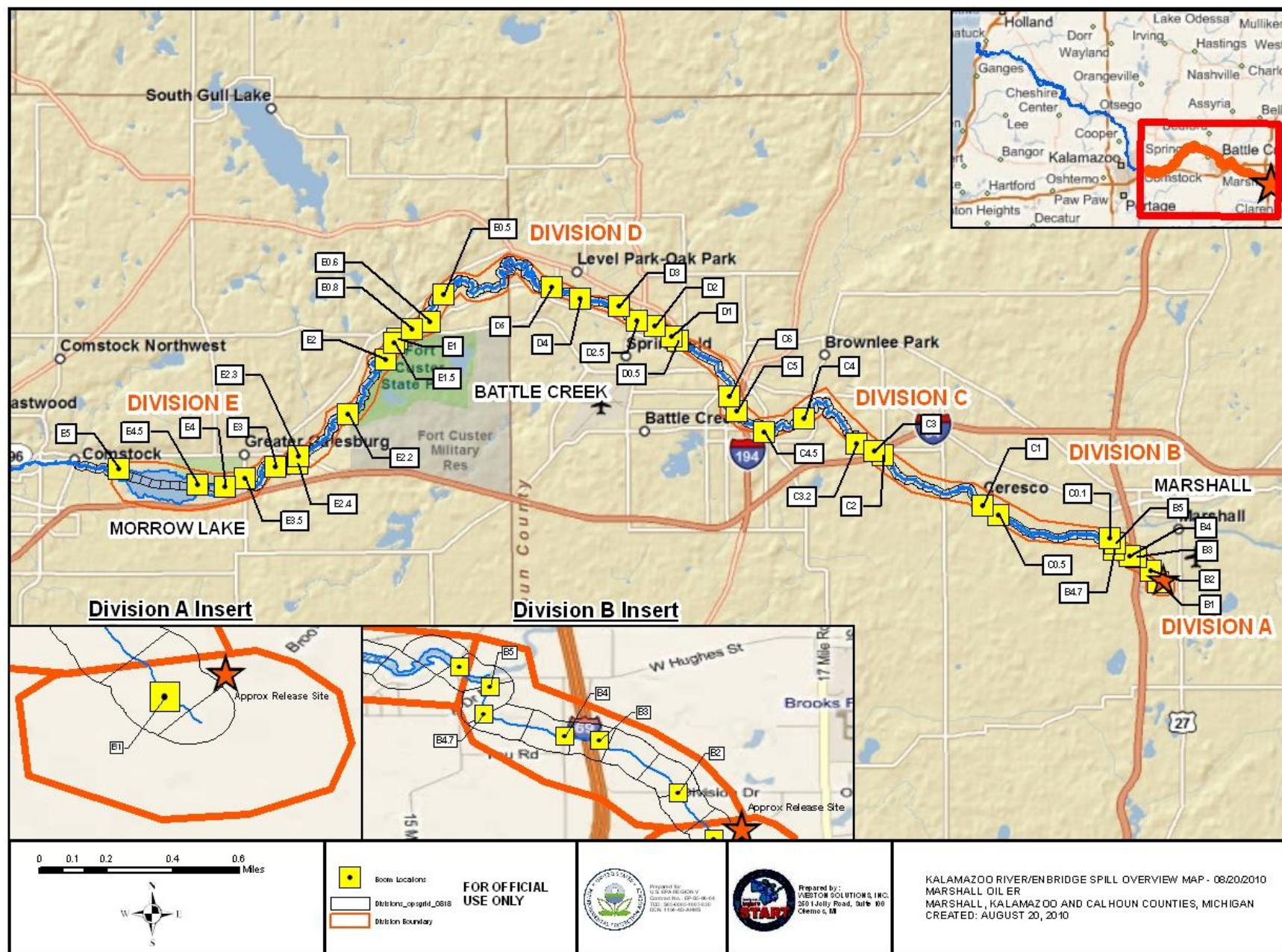
6.2 Reporting Schedule

SITREPs have been created daily and will continue until the UC establishes a different reporting schedule, in conjunction with the planning cycle.

7.0 Situational Reference Materials

See attached Map, entitled “Kalamazoo River/Enbridge Spill Overview Map,” for more information.

See attached Unified Command Organizational Charts (ICS 207) entitled, “Enbridge Pipelines Response Unified Command”, “Planning Section”, “Operations”, and “Division C.”



Enbridge Pipelines Response Unified Command

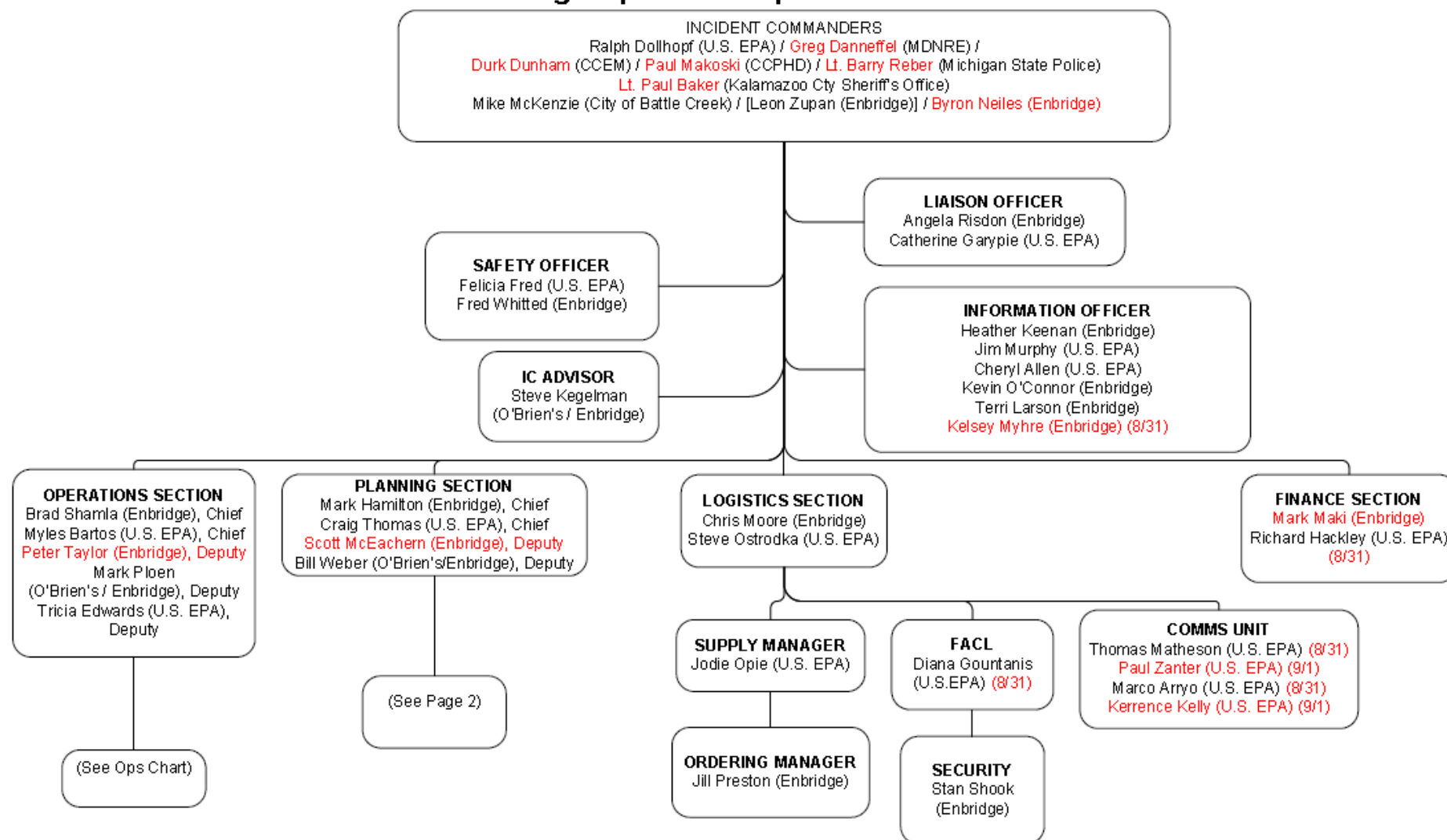


Figure 1 Unified Command

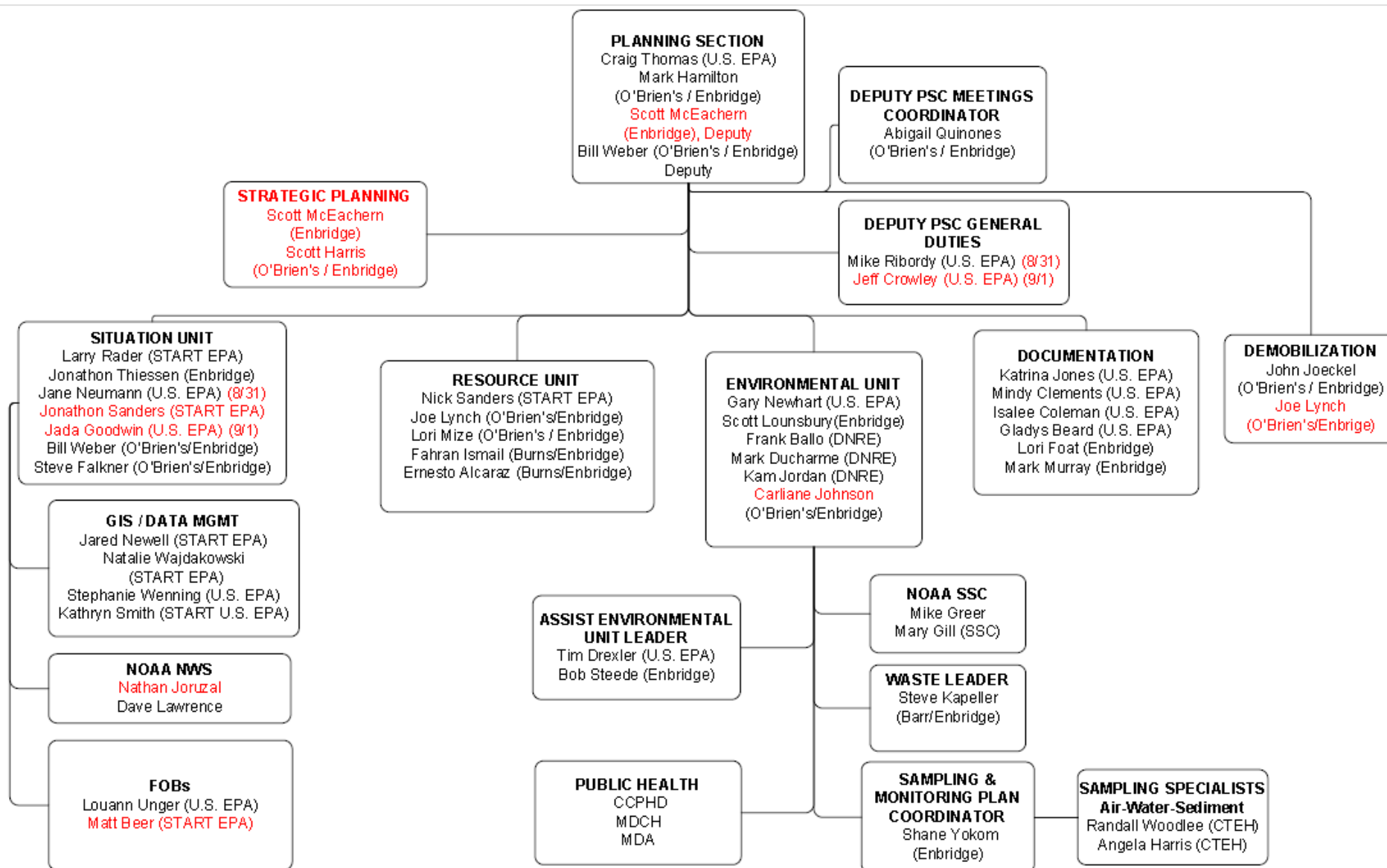


Figure 2 Planning

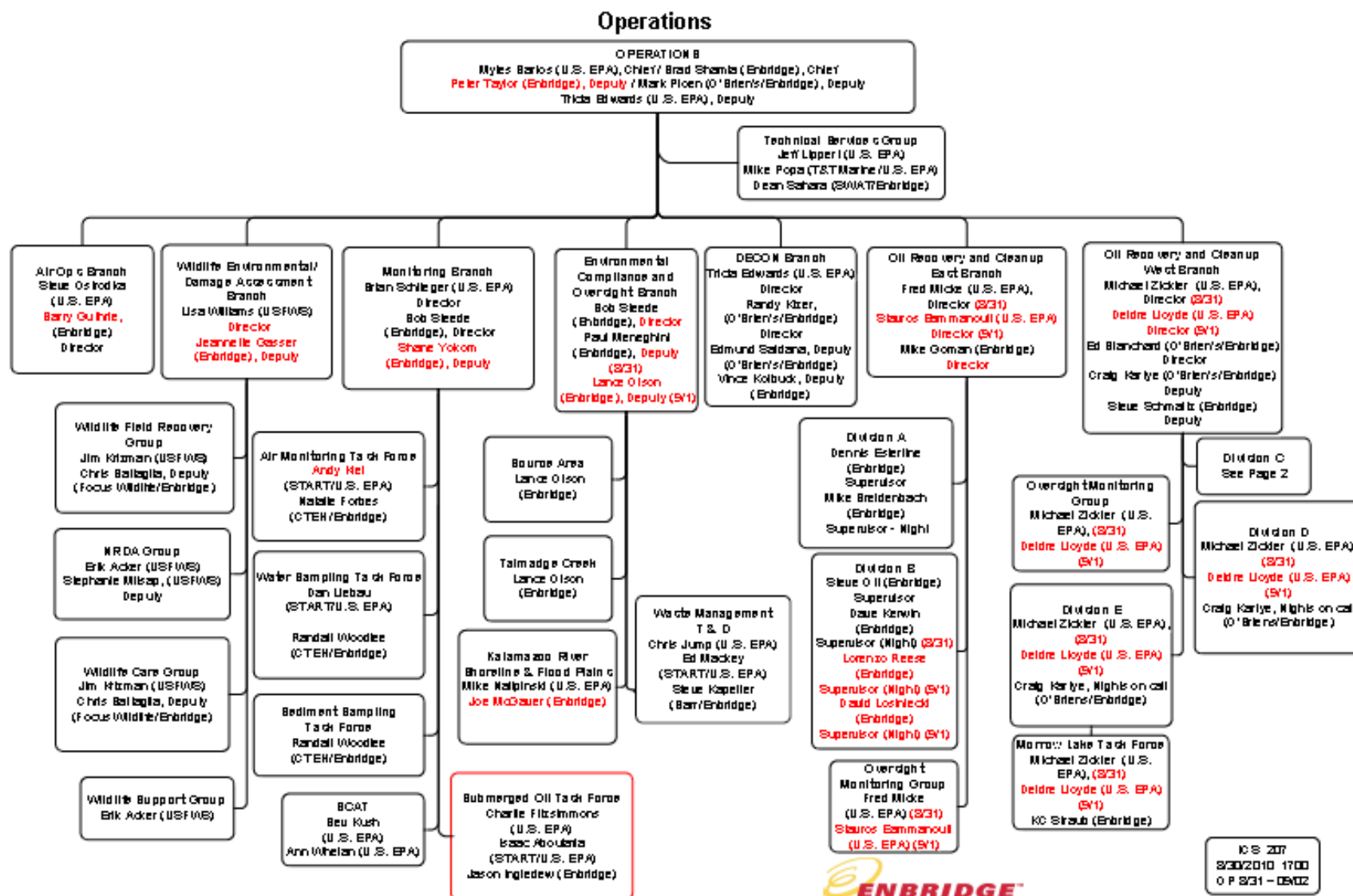


Figure 3 Operations

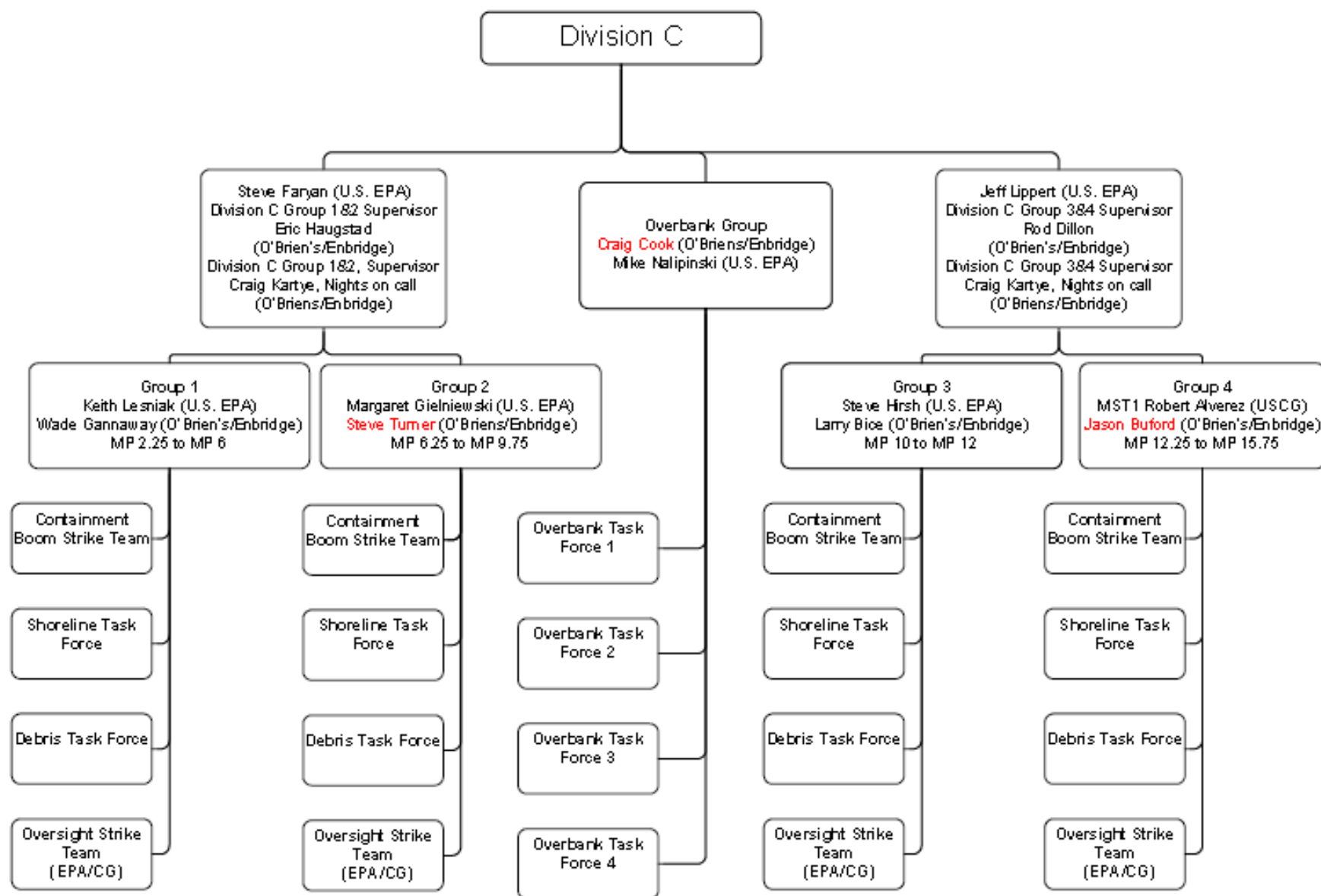


Figure 4 Division C