

US EPA ARCHIVE DOCUMENT

U.S. ENVIRONMENTAL PROTECTION AGENCY
POLLUTION/SITUATION REPORT
Kalamazoo River/Enbridge Spill - Removal POLREP-SITREP



UNITED STATES ENVIRONMENTAL PROTECTION AGENCY
Region V



Subject: SITREP #35
Kalamazoo River/Enbridge Spill
Z5JS
Marshall, MI
Latitude: 42.2395273 Longitude: -84.9662018

To: Lt. Paul Baker, Kalamazoo County Sheriff's Office
James Rutherford, Calhoun County Public Health Department
Durk Dunham, Calhoun County Emergency Management
Brian Whitsett, Michigan State Police, Emergency Mgt.
Michael Masterson, MDNRE
Kathy Schley, City of Battle Creek
Leon Zupan, Enbridge
Susan Hedman, U.S. EPA Regional Administrator
Rebecca Humphries, MDNRE
Jim Sygo, MDNRE
Connie Gibson, Calhoun County Sheriffs Office
Cheryl Vosburg, City of Marshall
David Chung, U.S. EPA
Jason El-Zein, U.S. EPA
Duty Officer, NRC
Michael Chezik, U.S. Department of Interior
Linda Nachowicz, U.S. EPA
OSLTF USCG, USCG
Jill Slaght, 7th District of Michigan
Ken Brock, 7th District of Michigan
Bruce Vanotteren, MDNRE
Brian Pierzina, PHMSA Central Region
Thomas Hemminger, USCG Grand Haven
Ronna Beckmann, U.S. EPA
Scott Corbin, Allegan County EMA Director

From: Ralph Dollhopf, U.S. EPA Incident Commander
Stephen Wolfe, U.S. EPA On-Scene Coordinator
Jeff Kimble, U.S. EPA Deputy Incident Commander
Mark Durno, U.S. EPA Deputy Incident Commander

Date: 08/29/10

Reporting Period: 1900 hours 08/28/10 to 1900 hours 08/29/10

1. Introduction

1.1 Background

1.1.1 Site History

Background Information

Site Number: Z5JS

D.O. Number:

Response Authority: OPA

Response Lead: PRP

NPL Status: Non NPL

Mobilization Date: 7/26/2010

Demob Date:

CERCLIS ID:

ERNS No.:

FPN#: E10527

Contract Number:

Action Memo Date:

Response Type: Emergency

Incident Category: Removal Action

Operable Unit:

Start Date: 7/26/2010

Completion Date:

RCRIS ID:

State Notification:

Reimbursable Account

1.1.2 Incident Category

Emergency Response -- Pipeline Rupture

1.1.3 Site Description

A 30-inch pipeline ruptured, releasing crude oil (NRC report of 19,500 barrels) into a culvert leading to Talmadge Creek. Talmadge Creek is a tributary to the Kalamazoo River. The response site is along Talmadge Creek and the Kalamazoo River running from Marshall, Michigan, to downstream of Battle Creek, Michigan. The Kalamazoo River is bordered by marshland and developed properties for the approximate 30-mile stretch of the response site.

1.1.4 Preliminary Removal Assessment/Removal Site Inspection Results

Approximately 30 miles of the Kalamazoo River have been impacted. The Kalamazoo River experienced flooding before and after the spill. The river levels later fell and stranded oil in some backwaters, wetlands and floodplains. Talmadge Creek was boomed off at the confluence to the Kalamazoo River. Containment and absorbent boom were deployed along the Kalamazoo River and Talmadge Creek. Containment and absorbent boom also were deployed in Morrow Lake.

1.1.5 Enforcement Activities, Identity of Potentially Responsible Parties

Enbridge is the RP.

On July 27, 2010, EPA issued an Administrative Order under section 311(c) of the Clean Water Act to Enbridge. Enbridge has submitted and EPA has approved the following deliverables required by the Order including but not limited to: *Operational Health and*

Safety Plan; Pipeline Repair Workplan; Sampling and Analysis Plan; Quality Assurance Project Plan; Oil Containment and Recovery Plan; Source Area Remediation Plan; Remediation Plan for Downstream Impacted Areas; and Waste Treatment, Transportation, and Disposal Plan.

1.2 Incident Objectives and Command Emphasis

The following incident objectives and command emphasis are taken from the IAP for the Operational Period August 29, 2010, 0700 to August 31, 2010, 0700.

Incident Objectives

- 1) Ensure health and safety of the public and response and recovery personnel.
- 2) Maintain the isolation of Talmadge Creek and Kalamazoo River from the source area.
- 3) Contain and recover oil and contaminated vegetation in Talmadge Creek and Kalamazoo River.
- 4) Maintain effective unified communications with cooperating and assisting agencies and the public.
- 5) Perform remediation and restoration of all affected public and private areas of river and river systems.
- 6) Provide protection of environmentally and culturally sensitive areas including wildlife and historic properties.
- 7) Protect threatened and endangered species and continue to recover and rehabilitate injured wildlife.
- 8) Maintain Joint Information Center function.
- 9) Continue to collect, coordinate, manage and communicate environmental and public health data.
- 10) Obtain input from multi-agency Science Team to help establish protocols to guide cleanup of environmentally impacted areas.

Command Emphasis

- 1) Continue to evaluate and enhance submerged oil monitoring in the Kalamazoo River and at Morrow Lake, including assessment, mapping and development of near and long-term capture and management options.
- 2) SCAT update on entire river system.
- 3) Prepare for final assessment and evaluation of release area.
- 4) Continue to monitor effectiveness of IAP briefing and use by Operations.

1.3 Strategic Considerations

- 1) Implement characterization of submerged oil contamination in the Kalamazoo River System above Morrow Lake Dam.
- 2) Continue to train and brief personnel and maintain safety practices across the project.

2. Current Activities

2.1 Operations Section

2.1.1 Narrative

The response site extends from the pipeline break to the dam at the end of Morrow Lake. Operationally, the response has been divided into two Oil Recovery and Cleanup Branches: East and West. These branches have been geographically divided into five Divisions, A through E, with Division A starting at the pipeline break and Division E ending at the western edge of Morrow Lake (see attached map). The East Branch includes Divisions A and B and the West Branch includes Divisions C, D and E. Division C is currently an area of command emphasis and has been further subdivided into four groups performing similar response activities in order to accelerate cleanup progress in that Division. Certain control points are denoted by division letter then control point number (i.e., C3 refers to control point three within Division C). Additionally the entire length of the site is now divided into one-quarter mile sections.

The Unified Command organizational charts (ICS 207 forms) are presented in Figures 1-4. The ICS 207 Forms describe in detail the work breakdown structure for the response action.

The following activities occurred during the reporting period from 1900 hours on August 28 to 1900 hours on August 29, 2010:

Division A

Division A has extended into the upstream portion of Division B (to the upstream side of Location B2) since the operations required there are more similar to those in Division A than Division B.

Enbridge reported the following:

- Hauling of soil to landfill from Cell 2.
- Removal of sheet piling at release area.
- Completion of backfill on Location A4 up to berm.
- Commencement of cleaning operations at Talmadge Creek bypass in Location A6 commenced cleaning operations.
- Completion of analytical sampling in Locations A5 and A6.
- Completion of 75% of the cleaning at Location A6.

EPA observed the following:

- Continuation of dewatering operations and soil excavation.
- Removal of standing oil from areas of ponded water with vacuum trucks.
- Removal of remaining sheet piling in Division A.

Division B**Enbridge reported the following:**

- Location B2.7
 - Continual operation of “Pump around” system.
 - Starting of backfilling northeast portion.
 - Conducting of soil field screening and identified more “clean” areas.
 - Surveying of points along stream bank and creek bottom between dams.
 - Continuation of mat road on north side.
- Completion of four hot spots downstream from Location B4.
- Completion of pond hot spot at Location B4.5. Oil still on pond.
- Estimation of location B5 to be 85% complete.
- Replacement of absorbent booms and absorbent sheets as needed.

EPA observed the following:

- Placement of a 200-foot water sleeve, leading into culvert at Location B2.
- Location B2.7
 - Diversion system working properly, with no water backing up behind upstream dam.
 - Excavation of portions of channel walls.
 - Vacuum extraction of oily water in wet areas.
 - Placement and removal of matting in order to excavate oiled soils below matting.
 - Two long-stick excavators digging channel walls.
- Excavation of sidewalls of ponded area upstream of Location B4.
- Excavation near Location B5, primarily in wetland area adjacent to and upstream from road.

EPA also conducted turbidity monitoring in Talmadge Creek during bank excavation activities.

USCG observed the following:

- Oil coming out of sediments at Location B4.2 in middle of creek bed, but contained by flume at location B4.5.
- Crews manually scraping banks at Location B4.5.
- Vacuum extraction of sheen and oiled water at Location B5.

Submerged Oil Task Force (Divisions C, D, and E)

Collected 8 core samples for qualitative (visual) analysis and provided oversight of the Enbridge sediment core collection activities in Division C.

Division C

Enbridge reported the following:

- Vegetation removal in Division C, emphasizing island cleanup activities.
- Maintenance of boom as needed.
- Continuation of sheen recovery operations.
- Removal of debris to disposal site.
- Confirmation of readiness for inspection at MP3.0-MP5.25.
- Continuation of additional new boat ramp access point construction near the end of Division C.

EPA observed the following:

- Cutting and removal of oiled vegetation on Island A with mechanized equipment.
- Setting out absorbent boom to contain and collect resulting oil and sheen.
- Unsuccessful test of swamp buggy for vegetation cutting.
- Using absorbent pads and snare boom to collect oil in upland and island areas in MP 6 through MP 10.
- Cleaning of island at MP 9 continuing; near completion.
- Removal of oiled vegetation on river banks in MP 10 through MP 15.75.
- Snare boom placement and maintenance to capture oil and oiled vegetation released during removal and soil scraping in upland areas.
- Tar balls and sheen downstream from containment boom in MP10 to MP12.
- Discovery of additional oiled upland bank at MP 11.75.
- Cleaning and releasing of turtle caught in snare boom (MP10 to MP12).
- Replacing and decontaminating containment in MP 12.15 through MP 15.75.
- Addressing upland oil areas.
- Pooled oil at MP 13.25.
- Discovery of old dump area between MP 14.25 and MP 14.5.
- Completion of approximately half of the 26 overbank sites at Location C3.5.
- Cleaning of Location C3.5 by 80 workers.

USCG observed the following:

- 15 Johnboat crews removing vegetation at MP 12.5.

Division D**Enbridge reported the following:**

- Continuation of boom management.
- 100% completion of shoreline vegetation clearing.
- Limited cutting of oiled vegetation at MP 16.75 to MP 17.5 (boundary of Divisions C and D).
- Maintenance of gabion baskets.
- Implementation of plan to consolidate all worker site staging areas into a single location in Division D and reallocating unutilized resources into Division C.

EPA observed the following:

- Continuation of boom maintenance operations.
- Continuation of shoreline cleaning of oiled vegetation and debris.

Division E**Enbridge reported the following:**

- Monitoring of existing containment and absorbent booms.
- Implementation of plan to consolidate workers into a single location in Division E and reallocating all unutilized resources into Division C.

EPA observed the following:

- Continuation of boom maintenance operations.
- Skimmers and hotshot boats working in Lake Morrow to remove oiled vegetation and debris.

Technical Services Group**EPA observed or took actions as follows:**

- Some surface oil, very shallow areas, and heavy sheen and tar balls surfacing from sediments when disturbed in marsh areas.
- Evaluation of resource needs for removal and capture of oiled sediments.
- Evaluation of several techniques for containment and recovery of submerged oil in sediments.
- Briefing of submerged oil task force sampling crew on current river conditions and findings over past three weeks.

Branch Operations

In addition to the East and West Recovery Branches, EPA, USCG and Enbridge Operations have five Branches that conduct activities in all Divisions: DECON, Environmental Compliance and Oversight; Monitoring; Wildlife Environmental/Damage Assessment; and Air Ops.

Environmental Compliance and Oversight Branch

Enbridge reported the following:

- Revision of source area closure report and submitted to EPA.
- Initiation of MDNRE soil sampling in Division B.

EPA observed or took actions as follows:

- Conducted oversight of 3 of the 5 Enbridge air monitoring crews.
- Conducted oversight of one Enbridge surface water sampling team and collected one split sample downstream of Morrow Lake.
- No off-site shipping since landfills were closed on Sunday.
- Met with Clean Harbors team assigned to implement new waste management segregation procedures.
- Audited Enbridge manifesting and sampling procedures of debris at Location C3.
- Decontamination of frac tanks.
- Spot-audited of shipping procedures of water leaving carbon treatment system at Frac Tank City.
- Came to agreement with Enbridge on a schedule for waste stream data.
- Reviewed and concurred on Enbridge Debris QA/QC sampling plan to facilitate debris box disposal as solid waste.
- Worked with Enbridge to develop methods to calculate oil volume in soil, debris, wastewater, and tank 1605.

Decontamination Branch

Enbridge reported the following:

- Evaluating all existing decontamination operations.
- Beginning frac tank cleaning.

EPA reported the following action and observation:

- Approving the Enbridge Decontamination of Equipment and Personnel Work Plan.
- Commencement of frac tank cleaning.

Monitoring Branch

Primary responsibility for sampling air sampling activities was turned over to Enbridge personnel on 08/28/10.

Enbridge reported the following:

- Continuation of air sampling program to collect 24-hour grab samples, summa mini-can samples, grab samples, and passive dosimeter samples in addition to the real-time air monitoring samples.
- Continuation of air sampling program's focus around Baker Estates mobile home park, the Ceresco Dam, and the leak site.
- Collection of the following samples:

Table 1. Samples collected 08/29/10

Sample Type	Number collected
Surface Water	5
Vertical Water Column Samples	6
Private Well Samples	40
Sediment Samples	11
Sheen Samples	0
Other	0
Soil Samples	0

EPA took the following actions:

- Received splits of 16 samples collected by Enbridge and sent to EPA lab.
- Confirmed that results of first 10 samples from EPA and Enbridge labs were similar and all below 6 ppbv for benzene.
- Took duplicate air samples at 23 locations near residences and boom work areas. No benzene or other air contaminants were detected.

Table 2. Samples Documented in SCRIBE as of 08/29/10

Media	Sample Type	Number collected
Air	Summa Canister	0
Air	Tedlar Bags	0
Air	Monitoring Samples	16
Surface Water	Grab	1
Sediment	Grab	0

Four SCAT teams reported the following:

- Collection of information in Division C, MP 13 through MP 17.
- Delays or interruptions affecting several teams' productivity as follows:
 - Automobile accident involving two team members, no injuries.
 - Landowner issue in vicinity of MP 13.0 (discontinued working in that area while the issue was being resolved).
 - Illegal dump with broken glass and other debris between MP 13.5 and MP 13.75; one team member fell into a hole in this area, and another team member also fell trying to assist the first person. Team moved out of that area, which did not contain much visible oil, and reported conditions to Operations and Safety for flagging. Also recovered an old wallet in this area and turned over to the State Police representative.
- Observing two wild turkeys (one injured) in a cove containing a significant amount of oil around MP 13.75; reporting to wildlife rescue hotline.

Wildlife Damage Assessment Branch

USFWS reported the following:

- Addressing oil-impacted wildlife. Bringing in 34 turtles, an eastern garter snake, 2 frogs, and 1 raccoon. Releasing 21 turtles and 2 frogs.
- Wildlife center has 255 animals in live care; Rehabilitating and releasing 388 animals through this operational period.
- Assessing implementation of floodplain cleanup recommendations.
- Collecting ephemeral data for the NRDA, primarily floodplain surveys of percentage of oiling of soils, herbaceous vegetation, shrubs, and trees.
- Evaluating potential new release sites for turtles.

Air Ops Branch

Since August 23, 2010, both the EPA START Situation Unit FOB and Enbridge have been using the Enbridge funded helicopter for their daily over-flights. The EPA helicopter will be available, as needed, for IC and other federal needs.

Enbridge reported observing the following during five overflights:

- Accepting and stabilizing scraped soil at soil staging areas in Division B.
- Excavating appeared complete in all areas from Division A to Highway I-69.
- Continual excavation in Area B from Highway I-69 to confluence of Talmadge Creek and Kalamazoo River.
- Installing of all timber matting and removing of some timber matting in Division B where excavation is complete.
- Slight sheen within boom area at confluence of Talmadge Creek and Kalamazoo River.

- Mud line not visible and large number of absorbent pads placed in boom area at the confluence.
- Continuation of very active shoreline cleanup activities.
- Generation of sheen from heavy work activity.
- Boom remaining in place around all islands in Division C.
- No sheen trailing off any islands in Division C.
- Continuation of heavy boom activity at peninsula above Ceresco Dam and dam itself.
- Observing noticeable increase in sheen at Ceresco Dam compared to previous days, likely due to increase in work activity and steam cleaning in area.
- No sheen flowing over Ceresco Dam.
- Sheen present on pond area below Ceresco Dam.
- More sheen than yesterday downstream of Division C.
- Sheen remaining in oxbow extending north of main channel at MP 21.50.
- Trapping in pond located in upper left section of Location C2.5.
- Slight broken sheen in delta to Morrow Lake.
- No visible sheen on Morrow Lake.
- Continuation of sampling activities on Lake Morrow.
- Broken mud line on Lake Morrow.
- Operation of all aerators in Division E.
- Operation of two sheen monitors on Lake Morrow with their locations remaining the same.

EPA observed the following during one overflight:

- Marking of the pipeline location with flags in preparation for integrity testing on 08/30/10.
- Scraping on Talmadge Creek. Two excavators working in Division B where no activity occurred yesterday.
- Increase in booming activities and placement of absorbent pads and substantial sheen at confluence of Talmadge Creek with Kalamazoo River.
- Heavy activity at islands upstream of Ceresco Dam. Sheen being contained and collected.
- Pressure washing upstream sidewall of Ceresco Dam generating sheen. Sheen effectively being diverted, contained and recovered, and no sheen seen going over the dam.
- Construction of new boat ramp and access road near end of Division C.
- Sheen on sand bar in delta area at east end of Morrow Lake, with containment boom located downstream of sheen area.

2.1.2 Progress Metrics

All progress metrics in Section 2.1.2 are as reported by Enbridge unless otherwise indicated.

Boom Report

Table 3. Boom Report as of 08/28/2010 1900

Number of Locations	34
Boom Deployed (feet)	141,476

Note: Since the transition of EPA's contractor's to Enbridge at 1900 hrs on 08/12/10, all boom is now controlled by Enbridge.

Soil and Debris Waste Tracking

Table 4. Soil and Debris Waste Tracking as of 08/28/10

Waste Stream	Quantity Shipped	Cumulative Quantity Shipped*
Haz Soil ^a	0 yd ³	15,344 yd ³
Non Haz Soil ^b	893 yd ³	4,419 yd ³
Debris ^c	24 yd ³	12,169 yd ³

* Information for water (other than daily quantity shipped) is reported in other tables below. Quantity awaiting disposal is estimated.

NA - Not provided by Enbridge

a. Haz (Benzene)-impacted soil is being sent to Envirosafe (Oregon, OH).

b. Non-hazardous soil is being sent to Westside Recycling (Three Rivers, MI) and EQ/Republic (Marshall, MI).

c. Roll-off boxes containing waste sorbents, boom, pads, plastic, PPE, and oiled vegetation and biomass are being sent to EQ facility (Michigan Disposal) in Wayne, MI and Republic (Marshall, MI).

Oil/Water Recovery Tracking

Note: Some of the values in the tables below have been audited and reconciled by Enbridge and may not correlate with previously reported values.

Table 5. Oil/Water Collected by Location

Location	Cumulative Total Collected (gallons) (8/29/10 0700)
Division A	4,604,640
Division B	2,990,625
Division C	766,100
Division D	117,825
Division E	49,950
Undetermined	124,200
TOTAL	8,653,340

Table 6. Oil-Water Separation as of 08/28/10

Oil-Water Separation at Tank 1605, Enbridge Facility in Griffith, IN Facility (gallons)	
Oil	677,000
Water	1,450,000
TOTAL	2,127,000

Table 7. Liquid Shipped Off-Site 08/28/10

Oil/Water Leaving Site	Destination	Daily Quantity Shipped (gallons)	Cumulative Quantity Shipped (gallons)
Haz Water	Dynecol, Detroit, MI	29,000	1,913,483
Treated Non Haz Water ^a	Dynecol, Detroit, MI	0	134,200
Treated Non Haz Water ^b	Battle Creek POTW	0	1,968,700
Treated Non Haz Water ^c	Liquid Industrial Waste Services, Holland, MI	0	332,700
Treated Non Haz Water	Plummer, Kentwood, MI	60,000	616,500
Oil/Water	Tank 1605, Enbridge Facility, Griffith, IN	18,000	2,127,000
TOTALS		107,000	7,092,583

a. Treated Non Haz Water no longer sent to Dynecol, Detroit, MI

b. Treated Non Haz Water no longer sent to Battle Creek POTW

c. Treated Non Haz Water no longer sent to Liquid Industrial Waste Services, Holland, MI

Table 8. Oil/Water Volume Summary (gallons)

Oil/Water Collected ^a	8,653,340
Oil/Water Shipped Off-site ^b	7,092,583
OIL/WATER REMAINING ON-SITE	1,560,757

a. As of 08/29/10 0700

b. As of 08/28/10

2.2 Planning Section

The DMU began a new staffing plan and schedule. Effective on 08/29/10, the DMU will operate from 0700 to 2000. The DMU continued importing preliminary and validated data into SCRIBE. EPA GIS continued the map processing, as requested.

Situation Unit FOB observed the following:

- Continuation of scraping of contaminated soils surrounding creek bed at Location B2.7 with excavators. Excavation depths ranging from surface scraping to approximately three feet below original grade.
- Reconstruction of original creek bank in Division B started, utilizing a clean topsoil/peat mixture.
- Riverbank rinsing downstream of Ceresco Dam where vegetation had been cut at the root level (no chemicals or dispersant used).
- Collection of oil and sheen rinsed from river bank downstream of Ceresco Dam with double absorbent boom.
- Power-washing activities of Ceresco Dam powerhouse walls on down river side of dam.
- Deployment of containment and absorbent boom at Location C1.

2.2.1 Anticipated Activities for Next Reporting Period

In the next operational period, Operations anticipates final clearance of Division A and stabilization of Division B in advance of clearance, as well as performing the same or similar activities as in the previous operational period, with a focus on activities in Division C.

2.2.2 Issues

There was no Public Health Workgroup meeting today. EPA, CCPHD, CTEH, and Trace Analytical Lab staff met to work out issues relating to discrepancies in the standard test data. The EPA Mobile Lab has extended its stay to facilitate an efficient transition of the on-site air monitoring responsibilities. Public Health reviewed air sampling and air monitoring data. There were no detections for benzene at or above the 6 ppbv action level.

2.3 Logistics Section

EPA Logistics continued to work with Enbridge logistics staff to resolve problems with trailers at the new ICP. Enbridge continued to construct a new gravel lot for the overflow parking at the new ICP.

2.4 Finance Section

The current NPFC issued ceiling is \$16 million. Approximately 80.1% of the ceiling has been spent through August 28, 2010, with a burn rate of \$229,693 per day. These cost summaries reflect only EPA-funded expenditures for the incident.

Table 9. FPN E10527 - Enbridge Pipeline Oil Spill
As of: 8/28/2010

ERRS Contractors		Est. Expended	Est. Burn Rate (Latest Daily)
EQM (EPS50802)	T057	\$1,258,770	\$0
	T060	167,934	12,000
LATA (EPS50804)		1,451,396	0
ER LLC (EPS50905)		723,669	0
ERRS Contractors		\$3,601,768	\$12,000
START Contractor			
WESTON (EPS50604)		3,943,241	76,572
Response Contractor Sub-Totals		\$7,545,009	\$88,572
EPA Funded Costs:			
Total EPA Costs		2,716,724	86,225
Pollution Removal Funding Agreements:			
Total Other Agencies		\$968,672	\$26,424
Sub-Totals		\$11,230,406	\$201,221
Indirect Cost (14.15%)		1,589,102	28,473
Total Est. Oil Spill Cost		\$12,819,508	\$229,693

2.5 Safety Officer

Enbridge reported the following:

- Worker suffered chest pain from continually lifting heavy contaminated bags.
- One heat stress incident at Location C1.
- Decontamination shut down on frac tanks due to heat issues. Ordering cooling suits to address the heat issue.
- Safety zones set up for hydrostatic test on 08/30/10.
- One crew doing shoreline cleaning shut down at 1500 due to heat.
- 10,000 tyvek suits ordered to address heat issues.
- Ambulance responded to Ceresco Dam to treat two personnel due to heat.
- An airboat was flipped by a Johnboat.
- One minor injury in which a wire punctured a worker's thumb.

EPA reported the following:

- Coordination with Enbridge Safety Officer to determine how to communicate weather and safety alerts to all Divisions during operations.
- Reviewing of Hydro Test Safety Plan.
- Receiving report that two SCAT Team members fell into holes, but that no injuries occurred.

2.6 Liaison Officer

The LNO provided information to Calhoun County Commissioners, the City of Battle Creek Public Works Department, Marshall Township, and the City of Marshall Environmental Program Coordinator regarding Enbridge hydrostatic testing of the pipeline. The LNO updated the Assisting and Coordinating Agencies list for the IAP. The LNO provided a special briefing for the Unified Command.

2.7 Information Officer

PIO staff continued to prepare a message to distribute to area schools about truck traffic as well as a fact sheet to update residents about cleanup activities and safety issues. PIO staff developed an organizational chart to establish PIO staff drafted the community involvement plan for the incident site.

JIC staff operated the media inquiry line and performed media monitoring.

Media Inquiry Line (877-440-7157)

Calls received during reporting period: None

Enbridge reported the following call volume and community center visits:

Oil Spill Public Information Hotline (800-306-6837)

Calls received during reporting period: 51

Community Center Visits: 9

Visits by location during reporting period:

Battle Creek 7

Marshall 2

Enbridge did not report inquiries from its www.response.enbridgeUS.com website.

2.8 Response Actions to Date

Response Actions to date may be found in Situation Reports 1 through 34.

3. Participating Entities

3.1 Unified Command

U.S. EPA

MDNRE

Michigan State Police Emergency
Management Division

City of Battle Creek

Calhoun County Public Health
Department

Calhoun County Emergency
Management

Kalamazoo County Sheriff

Enbridge (Responsible Party)

3.2 Cooperating and Assisting Agencies

ATSDR

Calhoun Conservation District

Calhoun County Commission

Calhoun County Sheriff Department

City of Battle Creek

City of Kalamazoo

City of Marshall

Emmett Township

Fredonia Township

Kalamazoo County Office of Emergency
Management

Marshall Area Firefighters Ambulance
Authority

Marshall Police Department

Marshall Township Government and
Fire Department

Michigan Department of Agriculture
MDCH

NOAA

Oakland County HAZMAT/RRTN

PHMSA

USCG

U.S. Department of the Interior/USGS

USFWS

3.3 Congressional Presence

State Representative Jase Bolger

State Representative Kate Segal

State Representative Ken Kurtz

State Representative Phil Browne

State Representative Phyllis Browne

State Representative Bob Geuck

State Representative Tanya Schuitmaker

State Senator Mike Nofs

U.S. Congressman Mark Schauer

U.S. Senator Carl Levin

U.S. Senator Debbie Stabenow

4.0 Personnel On Site

Table 10. Personnel On Site 08/29/10

Agency/Entity	Numbers Reported
EPA	43
START	43
Calhoun County Public Health Dept. (CCPH)	3
Calhoun County (CC) Sheriff	7
City of Battle Creek	3
Kalamazoo Sheriff	2
MDNRE	4
Michigan State Police (MSP)	1
NOAA - National Weather Service	2
NOAA- NRDA	2
USCG	8
USDA	2
USFWS	10
USFWS Contractors	2
Enbridge	15
Enbridge Contractors	1583
Total	1730

5. Definition of Terms

ATSDR	Agency for Toxic Substances and Disease Registry
CCPH	Calhoun County Public Health
CIC	Community Involvement Coordinator
DMU	Data Management Unit
EMT	Emergency Medical Technician
ENVL	Environmental Unit Leader
EPA	Environmental Protection Agency
ERRS	Emergency and Rapid Response Services
ERT	Emergency Response Team
EU	Environmental Unit
FOB	Field Observer
GLNPO	Great Lakes National Program Office
H ₂ S	Hydrogen Sulfide
HASP	Health and Safety Plan
IAP	Incident Action Plan
IC	Incident Commander
ICP	Incident Command Post
IN	Indiana
JIC	Joint Information Center
LEL	Lower Explosive Limit
LNO	Liaison Officer
LSC	Logistics Section Chief
MDA	Michigan Department of Agriculture
MDCH	Michigan Department of Community Health
MDMB	Michigan Department of Management and Budget
MDNRE	Michigan Department of Natural Resources and Environment
MI	Michigan
MIOSHA	Michigan Occupational Safety and Health Administration
MP	Mile Post
NRC	National Response Center
NOAA	National Oceanic and Atmospheric Administration
NPFC	National Pollution Fund Center
OSHA	Occupational Safety and Health Administration
PHMSA	Pipeline and Hazardous Materials Administration
PIO	Public Information Officer
PPE	Personal Protective Equipment
Ppbv	Parts Per Billion Volume
ppm	Parts Per Million
POTW	Publicly Owned Treatment Works
QA/QC	Quality Assurance/Quality Control
RP	Responsible Party
SCAT	Shoreline Contamination Assessment Team
START	Superfund Technical Assessment and Response Team
T&D	Transfer and Disposal
UC	Unified Command
USDA	United States Department of Agriculture
USCG	United States Coast Guard
USDOT	United States Department of Transportation
U.S. EPA	United States Environmental Protection Agency
USFWS	United States Fish and Wildlife Service
yd ³	Cubic Yards
VOCs	Volatile Organic Compounds

6.0 Source of Additional Information

6.1 Additional Information

For additional information please refer to <http://www.epa.gov/enbridgespill.html>. For sampling analysis data, please see <http://www.epa.gov/enbridgespill/data/datawater.html>.

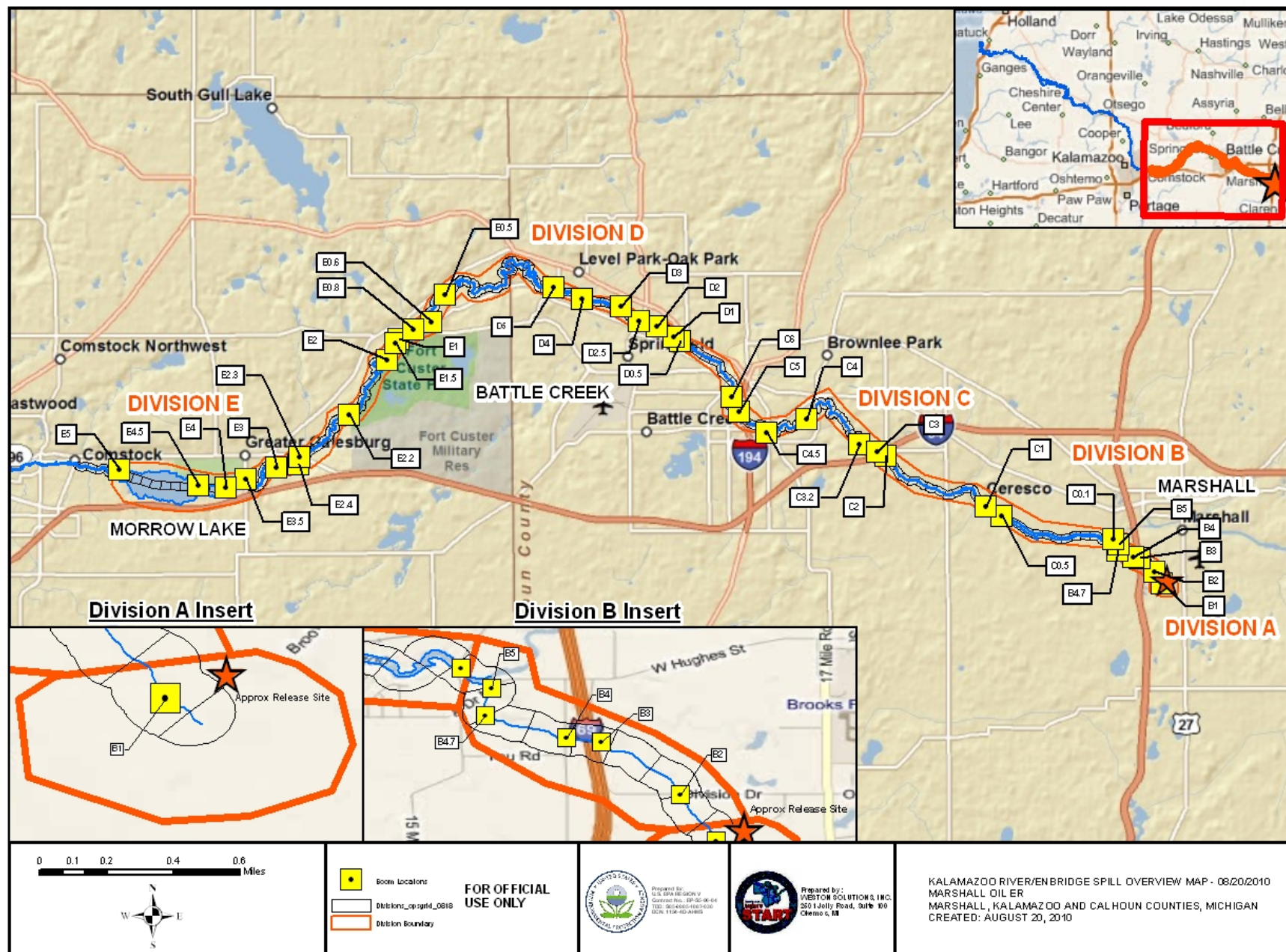
6.2 Reporting Schedule

SITREPs have been created daily and will continue until the UC establishes a different reporting schedule, in conjunction with the planning cycle.

7.0 Situational Reference Materials

See attached Map, entitled “Kalamazoo River/Enbridge Spill Overview Map,” for more information.

See attached Unified Command Organizational Charts (ICS 207) entitled, “Enbridge Pipelines Response Unified Command”, “Planning Section”, “Operations”, and “Division C.”





Enbridge Pipelines Response Unified Command

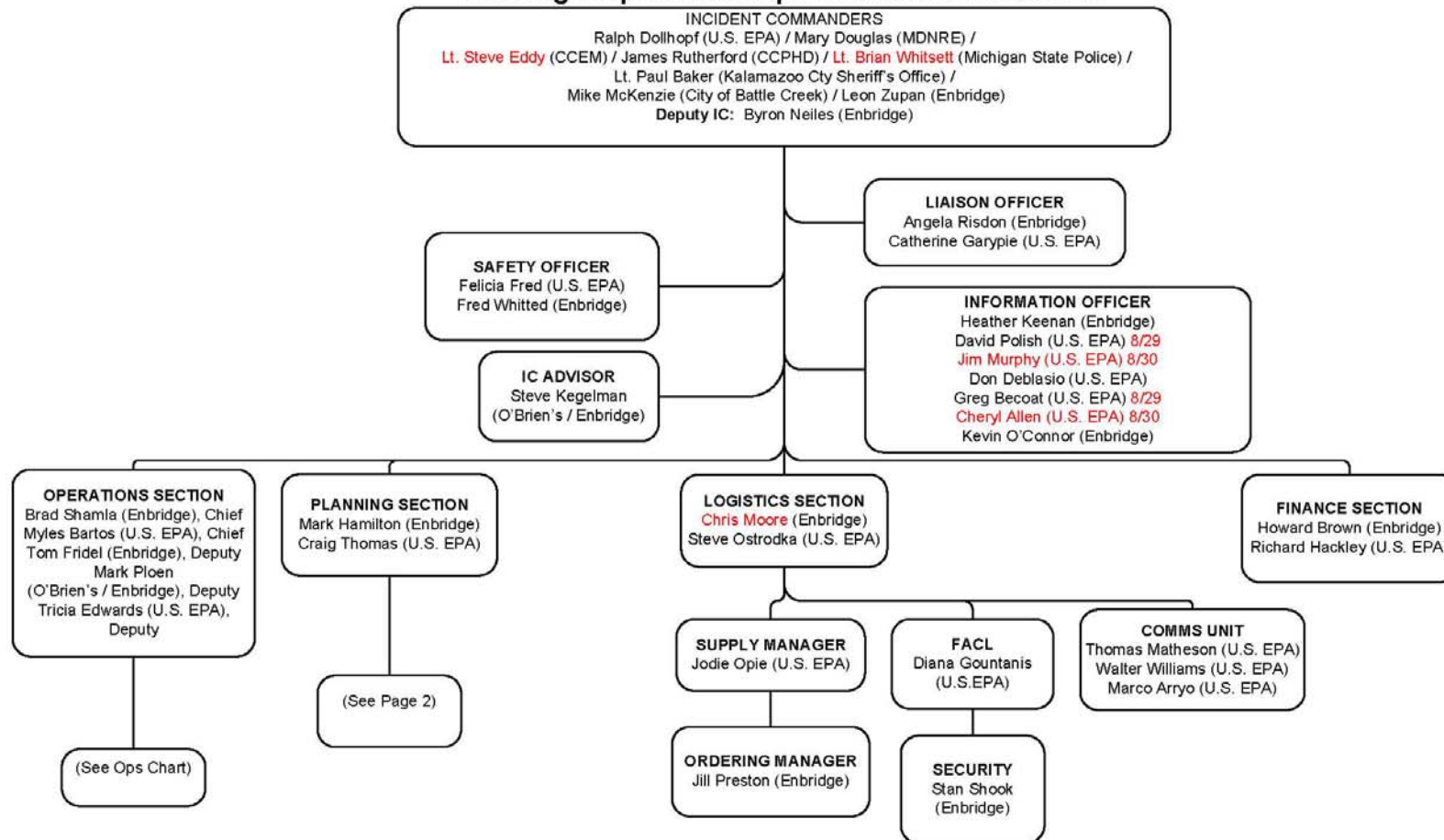


Figure 1 Unified Command



ICS 207
 8/28/2010 1700
 OP 8/29 - 8/31

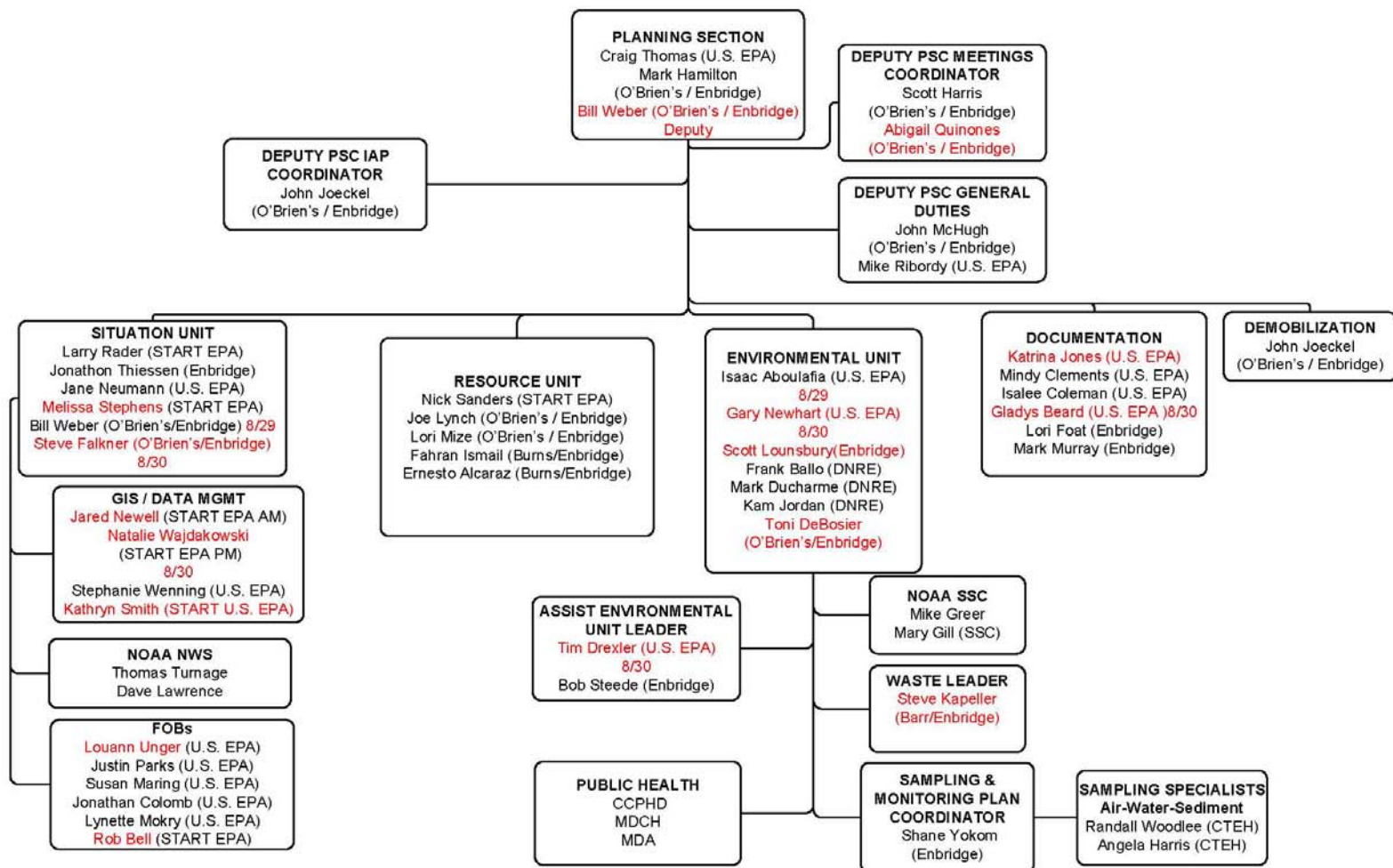
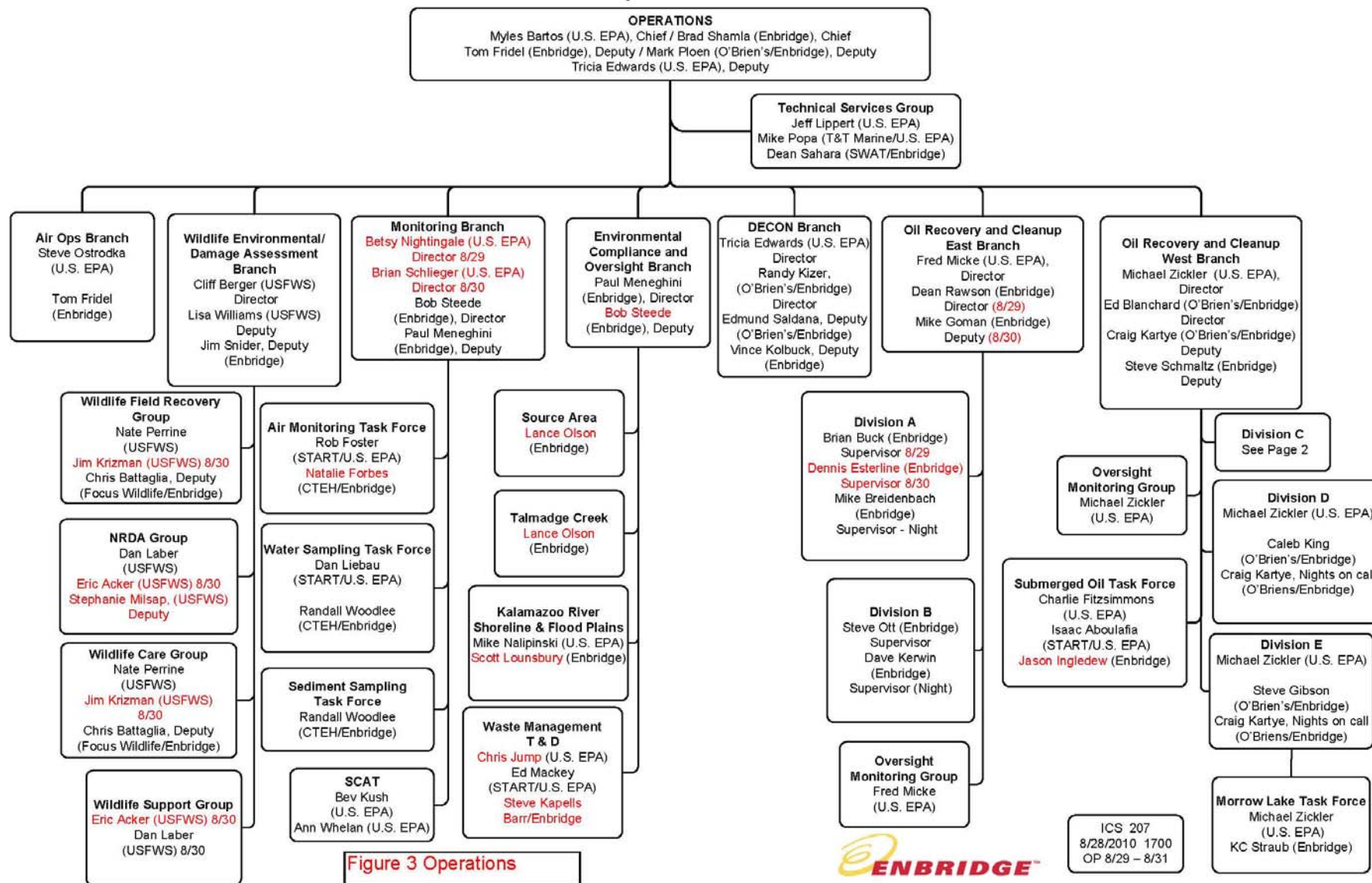


Figure 2 Planning



Operations



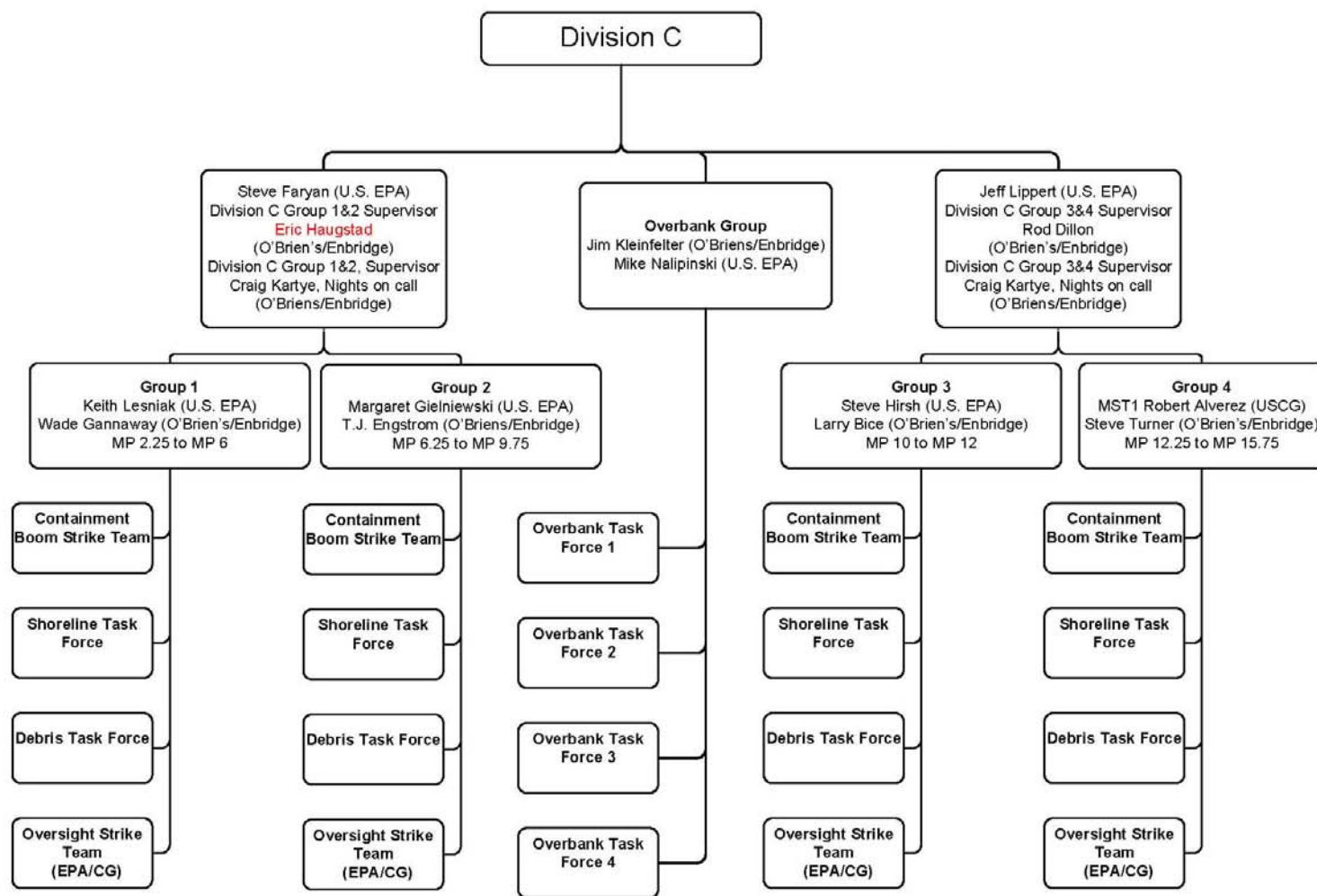


Figure 4 Division C



ICS 207
8/28/2010 1700
OP 8/29 - 8/31