

US EPA ARCHIVE DOCUMENT

U.S. ENVIRONMENTAL PROTECTION AGENCY  
POLLUTION/SITUATION REPORT  
Kalamazoo River/Enbridge Spill - Removal POLREP-SITREP



UNITED STATES ENVIRONMENTAL PROTECTION AGENCY  
Region V



**Subject:** SITREP #33  
Kalamazoo River/Enbridge Spill  
Z5JS  
Marshall, MI  
Latitude: 42.2395273 Longitude: -84.9662018

**To:** Lt. Paul Baker, Kalamazoo County Sheriff's Office  
James Rutherford, Calhoun County Public Health Department  
Durk Dunham, Calhoun County Emergency Management  
Brian Whitsett, Michigan State Police, Emergency Mgt.  
Michael Masterson, MDNRE  
Kathy Schley, City of Battle Creek  
Leon Zupan, Enbridge  
Susan Hedman, U.S. EPA Regional Administrator  
Rebecca Humphries, MDNRE  
Jim Sygo, MDNRE  
Connie Gibson, Calhoun County Sheriffs Office  
Cheryl Vosburg, City of Marshall  
David Chung, U.S. EPA  
Jason El-Zein, U.S. EPA  
Duty Officer, NRC  
Michael Chezik, U.S. Department of Interior  
Linda Nachowicz, U.S. EPA  
OSLTF USCG, USCG  
Jill Slaght, 7th District of Michigan  
Ken Brock, 7th District of Michigan  
Bruce Vanotteren, MDNRE  
Brian Pierzina, PHMSA Central Region  
Thomas Hemminger, USCG Grand Haven  
Ronna Beckmann, U.S. EPA  
Scott Corbin, Allegan County EMA Director

**From:** Ralph Dollhopf, U.S. EPA Incident Commander  
Stephen Wolfe, U.S. EPA On-Scene Coordinator  
Jeff Kimble, U.S. EPA Deputy Incident Commander  
Mark Durno, U.S. EPA Deputy Incident Commander

**Date:** 08/27/10

**Reporting Period:** 1900 hours 08/26/10 to 1900 hours 08/27/10

## 1. Introduction

### 1.1 Background

#### 1.1.1 Site History

##### Background Information

**Site Number:** Z5JS

**D.O. Number:**

**Response Authority:** OPA

**Response Lead:** PRP

**NPL Status:** Non NPL

**Mobilization Date:** 7/26/2010

**Demob Date:**

**CERCLIS ID:**

**ERNS No.:**

**FPN#:** E10527

**Contract Number:**

**Action Memo Date:**

**Response Type:** Emergency

**Incident Category:** Removal Action

**Operable Unit:**

**Start Date:** 7/26/2010

**Completion Date:**

**RCRIS ID:**

**State Notification:**

**Reimbursable Account**

#### 1.1.2 Incident Category

Emergency Response -- Pipeline Rupture

#### 1.1.3 Site Description

A 30-inch pipeline ruptured, releasing crude oil (NRC report of 19,500 barrels) into a culvert leading to Talmadge Creek. Talmadge Creek is a tributary to the Kalamazoo River. The response site is along Talmadge Creek and the Kalamazoo River running from Marshall, Michigan, to downstream of Battle Creek, Michigan. The Kalamazoo River is bordered by marshland and developed properties for the approximate 30-mile stretch of the response site.

#### 1.1.4 Preliminary Removal Assessment/Removal Site Inspection Results

Approximately 30 miles of the Kalamazoo River have been impacted. The Kalamazoo River experienced flooding before and after the spill. The river levels later fell and stranded oil in some backwaters, wetlands and floodplains. Talmadge Creek was boomed off at the confluence to the Kalamazoo River. Containment and absorbent boom were deployed along the Kalamazoo River and Talmadge Creek. Containment and absorbent boom also were deployed in Morrow Lake.

#### 1.1.5 Enforcement Activities, Identity of Potentially Responsible Parties

Enbridge is the RP.

On July 27, 2010, EPA issued an Administrative Order under section 311(c) of the Clean Water Act to Enbridge. Enbridge has submitted and EPA has approved the following deliverables required by the Order including but not limited to: *Operational Health and*

*Safety Plan; Pipeline Repair Workplan; Sampling and Analysis Plan; Quality Assurance Project Plan; Oil Containment and Recovery Plan; Source Area Remediation Plan; Remediation Plan for Downstream Impacted Areas; and Waste Treatment, Transportation, and Disposal Plan.*

## **1.2 Incident Objectives and Command Emphasis**

The following incident objectives and command emphasis are taken from the IAP for the Operational Period August 26, 2010, 0700 to August 27, 2010, 0700. UC has since implemented a 48 hour operational period.

### **Incident Objectives**

- 1) Ensure health and safety of the public and response & recovery personnel.
- 2) Maintain the isolation of Talmadge Creek and Kalamazoo River from the source area.
- 3) Contain and recover oil and contaminated vegetation in Talmadge Creek and Kalamazoo River.
- 4) Maintain effective unified communications with cooperating & assisting agencies and the public.
- 5) Perform remediation & restoration of all affected public & private areas of river & river systems.
- 6) Provide protection of environmentally and culturally sensitive areas including wildlife and historic properties.
- 7) Protect threatened and endangered species & continue to recover & rehabilitate injured wildlife.
- 8) Maintain Joint Information Center function.
- 9) Continue to collect, coordinate, manage and communicate environmental and public health data.
- 10) Obtain input from multi-agency Science Team to help establish protocols to guide cleanup of environmentally impacted areas.

### **Command Emphasis**

- 1) Continue to evaluate and enhance submerged oil monitoring in the Kalamazoo River and at Morrow Lake, including assessment, mapping and development of capture and management options.
- 2) Define the role and composition of the Science Team going forward.
- 3) Continue to review SCAT recommendations with Science Team, with emphasis on Division C, to coordinate oil recovery and cleanup efforts.
- 4) SCAT update on entire river system.
- 5) Prepare for final assessment and evaluation of release area.
- 6) Enbridge to maintain primary responsibility for planning cycle and IAP development:



- Monitor effectiveness of IAP briefing and use by Operations;
- Reevaluate timing of operational period and meeting schedule; and
- 0630 Operations briefing at the new CP with Command & General Staff.

### **1.3 Strategic Considerations**

- 1) Implement characterization of submerged oil contamination in the Kalamazoo River System above Morrow Lake Dam.
- 2) Complete characterization of pooled oil in flood plain and upland areas in Division C and Division D.

## **2. Current Activities**

### **2.1 Operations Section**

#### **2.1.1 Narrative**

The response site extends from the pipeline break to the dam at the end of Morrow Lake. Operationally, the response has been divided into two Oil Recovery and Cleanup Branches: East and West. These branches have been geographically divided into five Divisions, A through E, with Division A starting at the pipeline break and Division E ending at the western edge of Morrow Lake (see attached map). The East Branch includes Divisions A and B and the West Branch includes Divisions C, D and E. Division C is currently an area of command emphasis and has been further subdivided into four groups performing similar response activities in order to accelerate cleanup progress in that Division. Certain control points are denoted by division letter then control point number (i.e., C3 refers to control point three within Division C). Additionally the entire length of the site is now divided into one-quarter mile sections.

The Unified Command organizational charts (ICS 207 forms) are presented in Figures 1-4. The ICS 207 Forms describe in detail the work breakdown structure for the response action.

The following activities occurred during the reporting period from 1900 hours on August 26 to 1900 hours on August 27, 2010:

#### **Division A**

Division A has extended into the upstream portion of Division B (to the upstream side of Location B2) since the operations required there are more similar to those in Division A than Division B.

#### **Enbridge**

Enbridge reported it pulled contaminated mat roads out of the east and west ends of Location A2 and scraped underneath. Enbridge then reinstalled new mat roads to

facilitate backfilling with black dirt. Enbridge reported that it backfilled Location A1 with black dirt. Enbridge reported that backfilling in marsh area continues. Enbridge reported that they encountered difficulty at Location A6 in the late part of the operational period, but expected to complete that area and finish work in Division A soon after the start of the next operational period.

## **EPA**

EPA observed that overnight backfilling efforts made significant progress. Hot spot excavation continues. EPA observed that excavation in Locations A1 through A4 has been completed. EPA observed that 5,000 cubic yards of backfill had been placed in Locations A1 through A4. Wetland excavation near Location A6 continued. Testing of the pipe continues.

## **Division B**

### **Enbridge**

Enbridge completed cleaning of all culverts in Division B and focused attention on cleaning the pond and surrounding banks at Location B4.5. Enbridge reported a minor setback at Location B4.5 with the discovery of higher than expected amounts of oil under the mat road. Enbridge developed a plan for oil recovery at Location B4.5. Enbridge reported that cleanup at Location B2.7 is 50% complete and that they installed mat pad for a creek by-pass pump. Enbridge reported that dewatering equipment is being installed at Location B2.7 to further assist soil recovery. Enbridge reported that cleanup is 75% complete at Location B0.5. Enbridge said it is pushing the pace of work in this Division in order to complete it within a few days.

## **EPA**

EPA observed two backhoes excavating soil overnight at Location B2.7. EPA observed some vacuuming occurring upstream from Location B2.7. Excavation appeared nearly complete between Location B4 and Location B5. EPA observed that sheen and oil stringers were worse than the previous night, but still dramatically reduced in the larger pond near Location B4.5. EPA did not observe any visible sheen reaching the Kalamazoo River. EPA observed hot spot excavation continuing across all of Division B.

## **Submerged Oil Task Force (Divisions C, D, and E)**

The Submerged Oil Task Force collected three core samples at the confluence of Talmadge Creek and the Kalamazoo River to examine bedding distribution. Early assessment of these control points is encouraging as to their usefulness for modeling. This qualitative data collection is in preparation for quantitative data collection beginning in the next few days in upstream areas of Division C.

## **Division C**

### **Enbridge**

Enbridge reported that 227 boats were deployed for the cleanup on the Kalamazoo River, most in Division C. Enbridge is emphasizing island cleanup activities in this Division. Enbridge reported the status of vegetation clearing: Island A is 30% complete; Island B is 100% complete; Island C is 100% complete; Island D is 95% complete; Island E is 45% complete; and Island F is 100% complete. Enbridge noted new vegetation growth on Island F. The oil status reported by Enbridge for the islands is: Island B needs continuous monitoring for oil; Island C has some small pockets of oil; Island D has oil in the upper end; Island E has one known oil pool approximately 50 feet by 1 foot; and, Island F has one pocket of oil (undetermined size). Enbridge reported that absorbent boom by Island E needs maintenance. Enbridge reported that a crew worked at Location C2.5 to clear a small inlet into a creek. Enbridge encountered a deadfall log jam at MP 14 with a considerable amount of oil. The logs were wet and difficult to cut. The crew deployed 20 feet of absorbent boom to capture oil while breaking the log jam. An Enbridge crew caught an oiled turtle at Location C6 and called the Wildlife Branch for pick-up.

### **EPA**

EPA observed cleanup crews scraping and cleaning the right descending bank in the area immediately below the Ceresco Dam. EPA developed a plan with the Enbridge supervisor to clear all vegetation from all islands in MP 2.25 through MP 6. EPA observed crews cutting clean vegetation off the island at Location C2 because the workers had orders to clear all vegetation. USCG observed 100 yards of oil stained vegetation at MP 7.75 that was left uncut and needed to be re-surveyed. EPA observed workers clearing oiled vegetation at MP 9.75. EPA observed that there were 18 boats at Location C3.3 dock ferrying workers to work sites and creating congestion. EPA observed oiled containment boom at Location C5. USCG conducted a safety briefing for all airboat operators, discussing boat operations and river rules.

## **Division D**

### **Enbridge**

Enbridge reported the final pass through in Division D looks good except at MP 30.75 to MP 33.25, which is the “no-go” zone. Enbridge reported boom management, vegetation removal, and oiled debris removal continued throughout the operational period. Enbridge reported it is adjusting tactics, deploying smaller boats, and utilizing waders to reach shallow areas.



## **EPA**

EPA observed that the gabion basket construction crew at Location D2.5 will be split, with half of the crew being reallocated to Location E0.5 to support maintenance of the second gabion basket line. EPA observed that shoreline cleaning continued in Division D. EPA observed that crews were having trouble accessing Location D2 because the water level was too low for most boats. EPA observed that sheen was present in limited areas within Division D. EPA observed that Location D5 had minimal visible sheen, but that sheen was getting past the barriers installed at this location. EPA observed that Location D4 has been shut down.

## **Division E**

### **Enbridge**

Enbridge took over sediment and water sampling formerly conducted by Mudpuppy II. Enbridge reported that shoreline vegetation clearing, boom maintenance, and reconnaissance of the lake for sheen and tar balls continued.

## **EPA**

EPA observed that the installation process of gabion baskets at a location just upstream of Location E0.5 was completed. EPA observed that skimmers and hotshot boats continued working in Morrow Lake.

## **Branch Operations**

In addition to the East and West Recovery Branches, EPA, USCG and Enbridge Operations have five Branches that conduct activities in all Divisions: DECON, Environmental Compliance and Oversight; Monitoring; Wildlife Environmental/Damage Assessment; and Air Ops.

### **Environmental Compliance and Oversight Branch**

Enbridge reported they met with EPA to refine the SCAT process for the West Branch. Enbridge also reported they continued providing oversight for cleanup activities within Divisions C, D and E.

EPA observed sampling of air monitoring, sediment, and surface water samples.

## DECON Branch

### **Enbridge**

Enbridge is making final revisions to the approved decontamination plan. Enbridge continues to construct a decontamination staging area at Location 0.5. Enbridge reported that the frac tank cleaning and confined space entry system is operational.

### **EPA**

EPA conditionally approved the decontamination plan.

## Monitoring Branch

### **Enbridge**

The air sampling program continued to collect 24-hour grab samples, summa mini-can samples, grab samples, and passive dosimeter samples in addition to the real-time air monitoring samples. Enbridge reported that its air sampling program continued to focus around Baker Estates mobile home park, the Ceresco Dam, and the leak site.

Enbridge reported collecting the following samples:

<b>Sample Type</b>	<b>Number collected*</b>
Surface Water	16
Vertical Water Column Samples	11
Private Well Samples	0
Sediment Samples	7
Other	0
Soil Samples	0

\*Reflects samples collected 08/27/10

### **EPA**

EPA continued air monitoring in all divisions. Tedlar bag air samples were collected in the 11 grid areas of Division B and in the five focus areas (Daycare Center, Baker Estates, Frac Tank Storage Area, Squaw Creek, and Ceresco Dam). EPA shadowed one Enbridge air monitoring crew in Division B and Division C. No odor complaints were reported for this operational period. All Tedlar bag samples submitted for analysis were below 6 ppbv for benzene.

EPA collected the following monitoring samples:

Media	Sample Type	Number collected*
Air	Summa Canister	0
Air	Tedlar Bags	32
Air	Monitoring Samples	145
Surface Water	Grab	0
Sediment	Grab	0

\*Reflects samples documented in SCRIBE as of 8/27/10.

Four teams collected SCAT field data in Division C. Data has been collected from MP 2.5 to MP 10.5. SCAT developed deliverable sheets for the data from MP 6 to MP 8 and is working on the remaining data. Two new SCAT teams are being formed for mobilizing next week. One of the SCAT teams was called off of the water due to a report of reckless boat operations. However, after investigation by the safety teams in the sector, it was determined that they were operating within the specifications set forth in the HASP and were told they could go back out with the same operator. However, by that time the boat already was out of the water, and this SCAT team decided not to remobilize.

#### Wildlife Damage Assessment Branch

USFWS worked with the Wildlife Branch to address oil-impacted wildlife. The wildlife center continued to receive oiled animals collected along the Kalamazoo River. The heron team successfully captured an oiled great blue heron. There are 218 animals in live care. A total of 365 animals have been rehabilitated and released. USFWS is assessing implementation of floodplain cleanup recommendations, evaluating fertilizer application to enhance bioremediation, and assessing and addressing oil residuals in sediment. USFWS continues to collect ephemeral data for the NRDA, primarily floodplain surveys of percentage of oiling of soils, herbaceous vegetation, shrubs, and trees. Two vegetative community teams determined baseline conditions of plant communities in Division C. MDNRE staff completed mussel and sediment sampling. USFWS also reported an oiled area a short distance upstream of Location C3.2 (Historic Bridge Park) and I-94. USFWS reported an oiled area close to MP 8.75 with a strong odor and only one foot of cleared vegetation from the bank.

#### Air Ops Branch

#### **Enbridge**

Enbridge reported conducting 6 over-flights. Enbridge reported no sheen within boom area at confluence of Talmadge Creek and Kalamazoo River. Enbridge reported that mud line was still noticed in the same area with similar characteristics to previous operational period. Enbridge reported no sheen trailing off any of the islands in Division C. Enbridge reported that, at the peninsula above Ceresco Dam, crews were using the air

boat fans to direct sheen into boom areas for collection. Enbridge reported sheen above Ceresco Dam on the north side of the river continues to be contained with hard boom and absorbent boom and no sheen spilling over the dam. Enbridge reported very little sheen downstream of Division C. Enbridge reported that the only area of significant sheen was observed in the oxbow extending north of the main channel at MP 21.5. Enbridge reported no visible sheen on Morrow Lake or in the wetland area at the delta of the lake. Enbridge reported that sediment sampling activities on Morrow Lake were causing a significant and very visible mud line, mud sheen, and sediment sheen across the lake and against the chevron booms at the dam. Enbridge reported that the installation of gabion baskets in Division D is complete in both locations.

## **EPA**

EPA START accompanied Enbridge on one over-flight for observation in preparation of the daily situational briefing. Since August 23, 2010, both the EPA START Situation Unit FOB and Enbridge have been using the Enbridge funded helicopter for their daily over-flights. The EPA helicopter will be available, as needed, for IC and other federal needs. During the over-flight, EPA START observed that backfilling of the repaired pipe in Division A appeared to be complete. EPA START observed an inactive excavator equipped with a vacuum attachment in the oil collection area in Division B. However, most of the oil had been removed in the oil collection area in Division B. EPA START observed very minor sheen along the downstream side of the second island that is upstream of the Ceresco Dam. EPA START observed pockets of sheen upstream of Ceresco Dam. The sheen was being contained and collected. EPA START observed sheen in an oxbow area at MP 21.5. EPA START observed no visible sheen at the sediment core sample location site collected on 08/26/2010 in Morrow Lake. EPA START observed little to no sheen emanating from the Twin Islands and little to no sheen in Division C.

### **2.1.2 Progress Metrics**

All progress metrics in Section 2.1.2 are as reported by Enbridge unless otherwise indicated.

#### **Boom Report\***

Number of Locations	34
Boom Deployed (feet)	121,116

Note: Since the transition of EPA's contractor's to Enbridge at 1900 hrs on 08/12/10, all boom is now controlled by Enbridge.

\*as of 08/26/10 1900

### Soil and Debris Waste Tracking

Waste Stream	Quantity Shipped (8/26/2010)	Cumulative Quantity Shipped*
Haz Soil <sup>a</sup>	25 yd <sup>3</sup>	15,344 yd <sup>3</sup>
Non Haz Soil <sup>b</sup>	1552 yd <sup>3</sup>	1852 yd <sup>3</sup>
Debris <sup>c</sup>	650 yd <sup>3</sup>	12,000 yd <sup>3</sup>

\* Information for water (other than daily quantity shipped) is reported in other tables below. Quantity awaiting disposal is estimated.

NA - Not provided by Enbridge

a. Haz (Benzene)-impacted soil is being sent to EnviroSAFE (Oregon, OH).

b. Non-hazardous soil is being sent to Westside Recycling (Three Rivers, MI, as of August 24, 2010).

c. Roll-off boxes containing waste sorbents, boom, pads, plastic, PPE, and oiled vegetation and biomass are being sent to EQ facility (Michigan Disposal) in Wayne, MI.

### Oil/Water Recovery Tracking

Note: Some of the values in the tables below have been audited and reconciled by Enbridge and may not correlate with previously reported values.

Oil/Water Collected by Location	
Location	Cumulative Total Collected (gallons) (8/27/10 0700)
Division A	4,454,440
Division B	2,908,675
Division C	756,800
Division D	117,825
Division E	45,350
Undetermined	109,200
<b>TOTAL</b>	<b>8,392,290</b>

Oil-Water Separation at Tank 1605, Enbridge Facility in Griffith, IN Facility (gallons) (8/26/10)	
Oil	664,000
Water	1,444,000
<b>TOTAL</b>	<b>2,108,000</b>



<b>Liquid Shipped Off-Site (8/26/10)</b>		
<b>Oil/Water Leaving Site</b>	<b>Destination</b>	<b>Cumulative Quantity Shipped (gallons)</b>
Haz Water	Dynecol, Detroit, MI	1,884,483
Treated Non Haz Water	Dynecol, Detroit, MI	124,700
Treated Non Haz Water	Battle Creek POTW	1,968,700
Treated Non Haz Water	Liquid Industrial Waste Services, Holland, MI	332,700
Treated Non Haz Water	Plummer, Kentwood, MI	468,000
Oil/Water	Tank 1605, Enbridge Facility, Griffith, IN	2,108,000
<b>TOTAL</b>		<b>6,886,583</b>

<b>Oil/Water Volume Summary (gallons)</b>	
Oil/Water Collected	8,392,290
Oil/Water Shipped Off-site	6,886,583
<b>OIL/WATER REMAINING ON-SITE</b>	<b>1,505,707</b>

## 2.2 Planning Section

The DMU continued importing preliminary and validated data into SCRIBE. EPA GIS continued the map processing, as requested.

The EPA FOB reported operations in Division A were near completion. The EPA FOB observed that operations at Location B1 have been restricted to boom replacement and product removal with vacuum trucks. The EPA FOB observed that vegetation removal teams and rinsing operations were not active at Location B1. The EPA FOB observed that several test pits in Location B1 have exhibited product seepages. The EPA FOB observed that the culvert at Location B1 and Division Drive was being prepped for dewatering and excavation activities. The EPA FOB observed that the Talmadge Creek peripheral area had been dewatered and contaminated soil had been excavated and transported off-site at Location B3. The EPA FOB also observed that a carbon scrubber system was being installed along the west shoreline. Additionally, the EPA FOB observed a large transport pipe being constructed to run water from downstream of Location B3 to the carbon scrubber system. The EPA FOB observed a significant increase in water turbidity at Location B5 in the area where Talmadge Creek enters the Kalamazoo River. The EPA FOB observed an increase in workforce at Location C3, from 55 personnel on 08/26/2010 to approximately 144 personnel on 08/27/2010. The

EPA FOB observed that the Location C3 site supervisor had not been able to acquire enough boats or personal flotation devices (PFDs) to properly supply the work crew.

### **2.2.1 Anticipated Activities for Next Reporting Period**

In the next operational period, Operations anticipates performing the same or similar activities as in the previous operational period, with a focus on activities in Division C.

### **2.2.2 Issues**

There was a Public Health Workgroup meeting today. The workgroup discussed environmental data updates and reporting to the public as well as the transition to Enbridge for reporting environmental data to the public. Public Health reviewed air sampling and air monitoring data. There were no detections for benzene at or above the 6 ppbv action level.

### **2.3 Logistics Section**

EPA Logistics continued to work with Enbridge logistics staff to resolve problems with trailers at the new ICP. Most continuing safety issues identified by MIOSHA have been corrected.

## 2.4 Finance Section

The current NPFC issued ceiling is \$16 million. Approximately 77.9% of the ceiling has been spent through August 26, 2010, with a burn rate of \$286,919 per day. These cost summaries reflect only EPA-funded expenditures for the incident.

FPN E10527 - Enbridge Pipeline Oil Spill

As of: 8/26/2010

ERRS Contractors	Authorized	Est. Expended	Est Burn Rate (Lastest Daily)
EQM (EPS50802)	T057	\$1,258,770	\$0
	T060	143,934	12,000
LATA (EPS50804)		1,451,396	0
ER LLC (EPS50905)		723,669	0
ERRS Contractors		\$3,577,768	\$12,000
START Contractor			
WESTON (EPS50604)		3,752,167	117,479
Response Contractor Sub-Totals		\$7,329,935	\$129,479
EPA Funded Costs:			
Total EPA Costs		2,634,449	95,450
Pollution Removal Funding			
Agreements:			
Total Other Agencies		\$954,392	\$26,424
Sub-Totals		\$10,918,777	\$251,353
Indirect Cost (14.15%)		1,545,007	35,566
Total Est. Oil Spill Cost		\$12,463,784	\$286,919

## 2.5 Safety Officer

The Enbridge Safety Officer reported several minor first aid incidents involving poison ivy and instructed staff on identifying poison ivy. Additionally, Enbridge reported two minor illnesses and an injury (hernia) resulting in removal from duty. The Enbridge Safety Officer also reported a near-miss incident involving a roll-off trailer and spotter.

## 2.6 Liaison Officer

The LNO updated the Coordinating and Assisting Agencies List for the IAP.

## 2.7 Information Officer

PIO staff attended a town hall forum hosted by 7<sup>th</sup> District Congressman Mark Schauer at Marshall Middle School on 08/26/2010 at 1930. Regional Administrator Susan Hedman and Deputy Incident Commander Mark Durno participated on the panel.

JIC staff operated the media inquiry line and performed media monitoring.

### **Media Inquiry Line (877-440-7157)**

Calls received during reporting period: None

Enbridge reported the following call volume and community center visits:

### **Oil Spill Public Information Hotline (800-306-6837)**

Calls received during reporting period: 95

### **Community Center Visits: 48**

Visits by location during reporting period:

Battle Creek 23

Marshall 14

Enbridge reported that it received three inquiries from its [www.response.enbridgeUS.com](http://www.response.enbridgeUS.com) website.

## 2.8 Response Actions to Date

Response Actions to date may be found in Situation Reports 1 through 32.

## 3. Participating Entities

### 3.1 Unified Command

U.S. EPA

MDNRE

Michigan State Police Emergency  
Management Division

City of Battle Creek

Calhoun County Public Health  
Department

Calhoun County Emergency  
Management

Kalamazoo County Sheriff

Enbridge (Responsible Party)

### 3.2 Cooperating and Assisting Agencies

ATSDR	Marshall Police Department
Calhoun Conservation District	Marshall Township Government and Fire Department
Calhoun County Commission	Michigan Department of Agriculture
Calhoun County Sheriff Department	MDCH
City of Battle Creek	MDNRE
City of Kalamazoo	Michigan State Police
City of Marshall	NOAA
Emmett Township	Oakland County HAZMAT/RRTN
Fredonia Township	PHMSA
Kalamazoo County Office of Emergency Management	USCG
Marshall Area Firefighters Ambulance Authority	U.S. Department of the Interior/USGS
	USFWS

### 3.3 Congressional Presence

State Representative Jase Bolger  
State Representative Kate Segal  
State Representative Ken Kurtz  
State Representative Phil Browne  
State Representative Phyllis Browne  
State Representative Bob Geuck  
State Representative Tanya Schuitmaker  
State Senator Mike Nofs  
U.S. Congressman Mark Schauer  
U.S. Senator Carl Levin  
U.S. Senator Debbie Stabenow



#### 4.0 Personnel On Site

Agency/Entity	Numbers Reported
EPA	48
START	61
Calhoun County Public Health Dept. (CCPH)	5
Calhoun County (CC) Sheriff	6
City of Battle Creek	<b>3</b>
Kalamazoo Sheriff	<b>2</b>
MDA	1
MDCH	4
MDNRE	_*
Michigan State Police (MSP)	_*
NOAA - National Weather Service	<b>2</b>
NOAA- NRDA	2
USCG	<b>8</b>
USDA	0
USFWS	10
USFWS Contractors	2
Enbridge	20
Enbridge Contractors	1707
<b>Total</b>	<b>1875</b>

\*Numbers not reported for this operational period.

## 5. Definition of Terms

ATSDR	Agency for Toxic Substances and Disease Registry
CCPH	Calhoun County Public Health
CIC	Community Involvement Coordinator
DMU	Data Management Unit
EMT	Emergency Medical Technician
ENVL	Environmental Unit Leader
EPA	Environmental Protection Agency
ERRS	Emergency and Rapid Response Services
ERT	Emergency Response Team
EU	Environmental Unit
FOB	Field Observer
GLNPO	Great Lakes National Program Office
H <sub>2</sub> S	Hydrogen Sulfide
HASP	Health and Safety Plan
IAP	Incident Action Plan
IC	Incident Commander
ICP	Incident Command Post
IN	Indiana
JIC	Joint Information Center
LEL	Lower Explosive Limit
LNO	Liaison Officer
LSC	Logistics Section Chief
MDA	Michigan Department of Agriculture
MDCH	Michigan Department of Community Health
MDMB	Michigan Department of Management and Budget
MDNRE	Michigan Department of Natural Resources and Environment
MI	Michigan
MIOSHA	Michigan Occupational Safety and Health Administration
MP	Mile Post
NRC	National Response Center
NOAA	National Oceanic and Atmospheric Administration
NPFC	National Pollution Fund Center
OSHA	Occupational Safety and Health Administration
PHMSA	Pipeline and Hazardous Materials Administration
PIO	Public Information Officer
PPE	Personal Protective Equipment
ppm	Parts Per Million
POTW	Publicly Owned Treatment Works
QA/QC	Quality Assurance/Quality Control
RP	Responsible Party
SCAT	Shoreline Contamination Assessment Team
START	Superfund Technical Assessment and Response Team
T&D	Transfer and Disposal
UC	Unified Command
USDA	United States Department of Agriculture
USCG	United States Coast Guard
USDOT	United States Department of Transportation
U.S. EPA	United States Environmental Protection Agency
USFWS	United States Fish and Wildlife Service
yd <sup>3</sup>	Cubic Yards
VOCs	Volatile Organic Compounds

## **6.0 Source of Additional Information**

### **6.1 Additional Information**

For additional information please refer to <http://www.epa.gov/enbridgespill.html>. For sampling analysis data, please see <http://www.epa.gov/enbridgespill/data/datawater.html>.

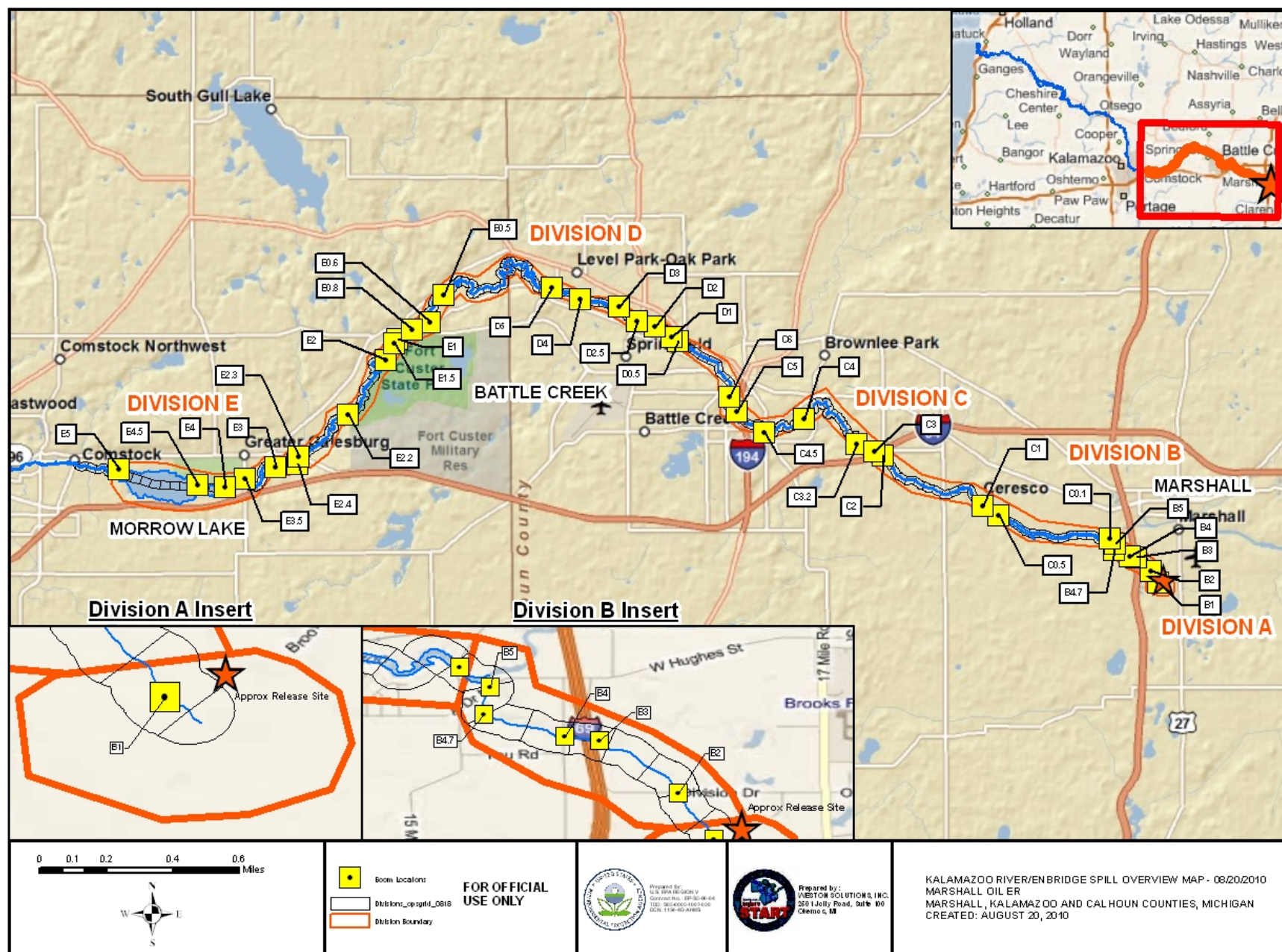
### **6.2 Reporting Schedule**

SITREPs have been created daily and will continue until the UC establishes a different reporting schedule, in conjunction with the planning cycle.

## **7.0 Situational Reference Materials**

See attached Map, entitled “Kalamazoo River/Enbridge Spill Overview Map,” for more information.

See attached Unified Command Organizational Charts (ICS 207) entitled, “Enbridge Pipelines Response Unified Command”, “Planning Section”, “Operations”, and “Division C.”







## Enbridge Pipelines Response Unified Command

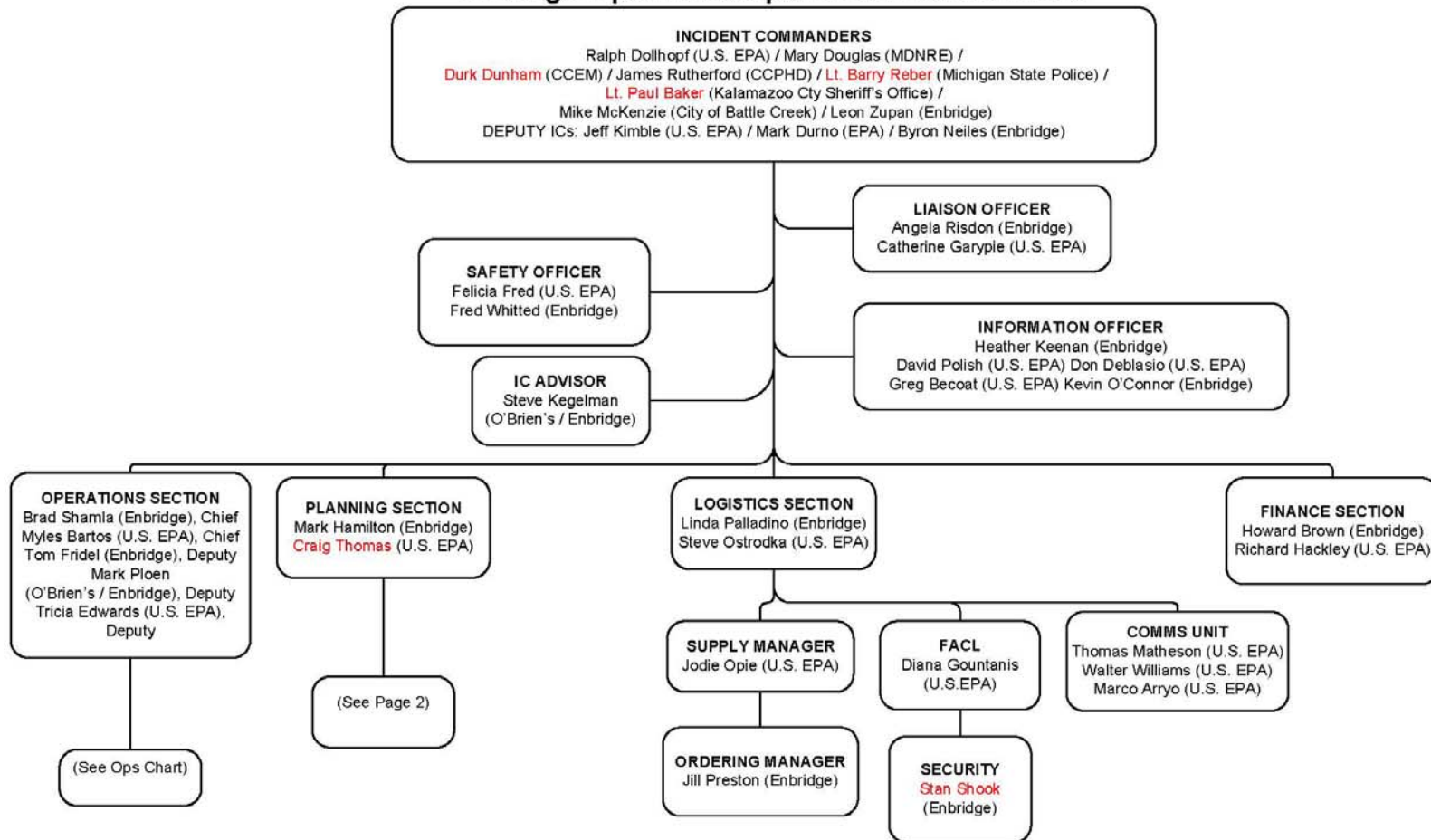


Figure 1 Unified Command



ICS 207  
 8/26/2010 1700  
 OP 8/27 - 8/29



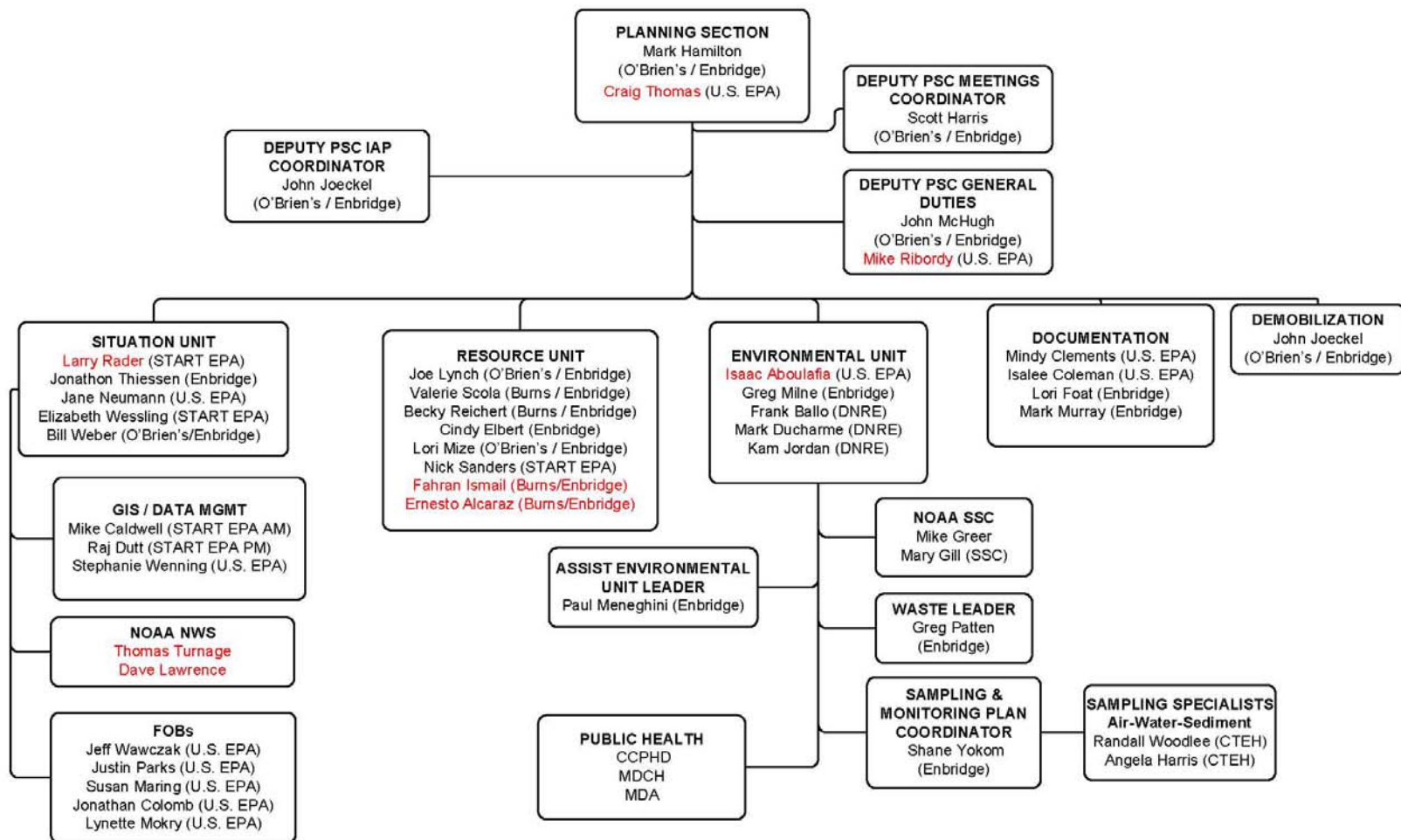
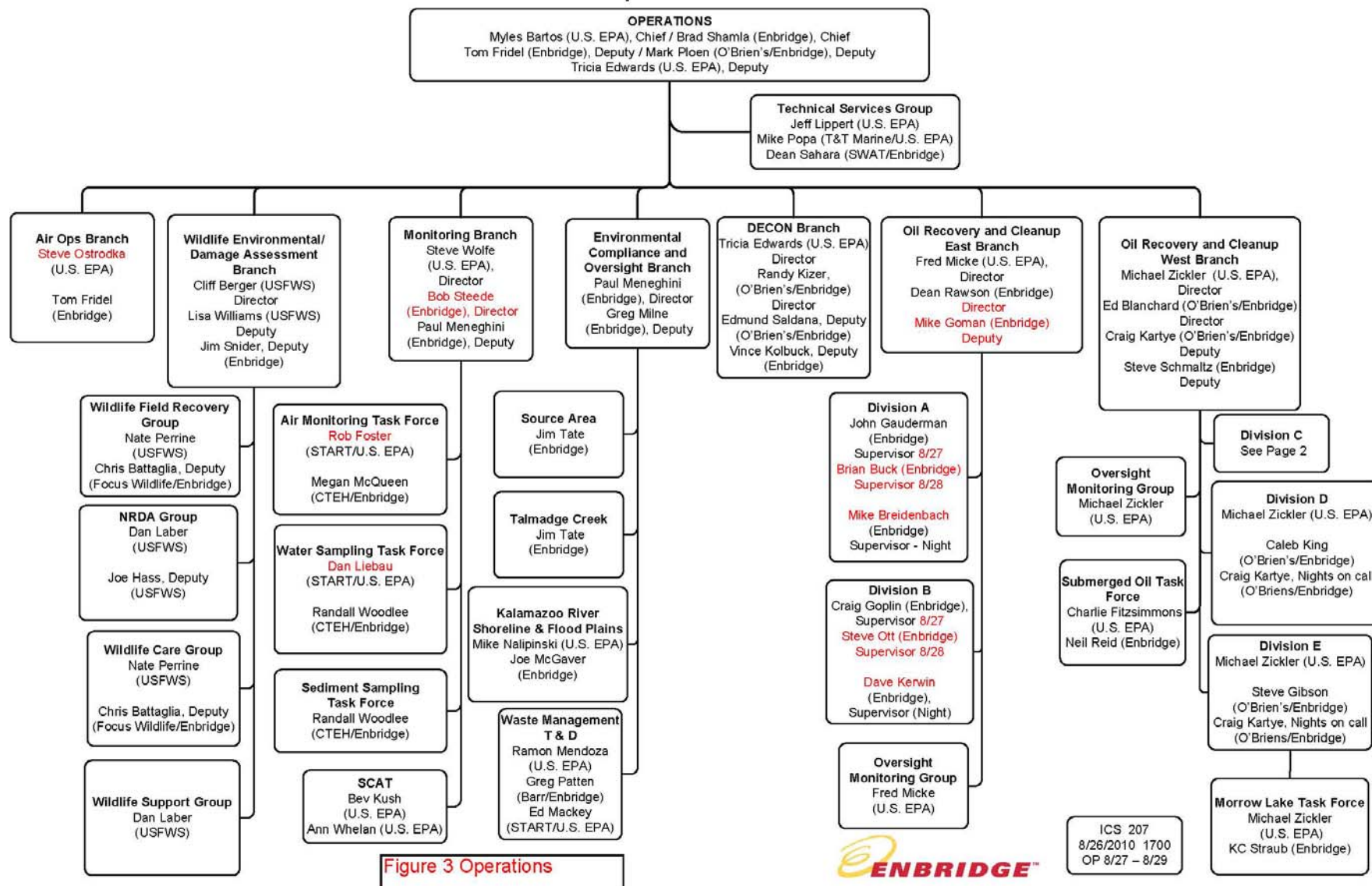


Figure 2 Planning Section



## Operations



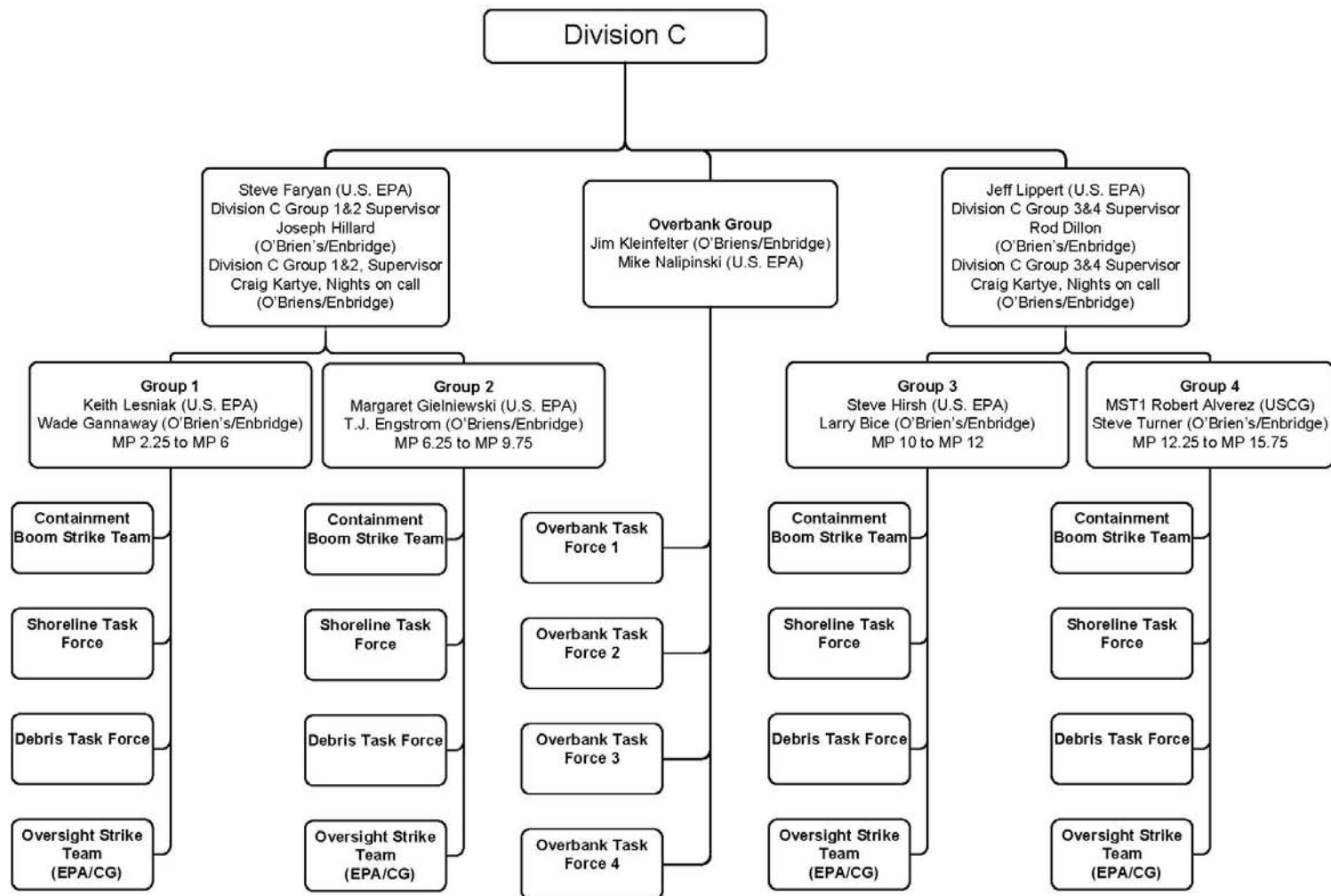


Figure 4 Division C



ICS 207  
8/26/2010 1700  
OP 8/27 - 8/29