

US EPA ARCHIVE DOCUMENT

U.S. ENVIRONMENTAL PROTECTION AGENCY
POLLUTION/SITUATION REPORT
Kalamazoo River/Enbridge Spill - Removal POLREP-SITREP



UNITED STATES ENVIRONMENTAL PROTECTION AGENCY
Region V



Subject: SITREP #22
Kalamazoo River/Enbridge Spill
Z5JS
Marshall, MI
Latitude: 42.2395273 Longitude: -84.9662018

To: Lt. Paul Baker, Kalamazoo County Sheriff's Office
James Rutherford, Calhoun County Public Health Department
Durk Dunham, Calhoun County Emergency Management
F/LT Bonnie Kanicki-Wilson, Michigan State Police, Emergency Mgt.

Mike Masterson, MDNRE
Mike McKenzie, City of Battle Creek
Leon Zupan, Enbridge
Susan Hedman, U.S. EPA Regional Administrator
Rebecca Humphries, MDNRE
Jim Sygo, MDNRE
Connie Gibson, Calhoun County Sheriffs Office
Cheryl Vosburg, City of Marshall
David Chung, U.S. EPA
Jason El-Zein, U.S. EPA
Duty Officer, NRC
Michael Chezik, U.S. Department of Interior
Linda Nachowicz, U.S. EPA
OSLTF USCG, USCG
Jill Slaght, 7th District of Michigan
Ken Brock, 7th District of Michigan
Bruce Vanotteren, MDNRE
Brian Pierzina, PHMSA Central Region
Thomas Hemminger, USCG Grand Haven
Ronna Beckmann, U.S. EPA
CAPT Stephen Torpey, USCG
Scott Corbin, Allegan County EMA Director

From: Ralph Dollhopf, U.S. EPA Incident Commander
Stephen Wolfe, U.S. EPA On-Scene Coordinator
Sam Borries, U.S. EPA Deputy Incident Commander

Date: 08/16/10

Reporting Period: 1900 hours 08/15/10 to 1900 hours 08/16/10

1. Introduction

1.1 Background

1.1.1 Site History

Background Information

Site Number: Z5JS

D.O. Number:

Response Authority: OPA

Response Lead: PRP

NPL Status: Non NPL

Mobilization Date: 7/26/2010

Demob Date:

CERCLIS ID:

ERNS No.:

FPN#: E10527

Contract Number:

Action Memo Date:

Response Type: Emergency

Incident Category: Removal Assessment

Operable Unit:

Start Date: 7/26/2010

Completion Date:

RCRIS ID:

State Notification:

Reimbursable Account

1.1.2 Incident Category

Emergency Response -- Pipeline Rupture

1.1.3 Site Description

A 30-inch pipeline ruptured, releasing crude oil (NRC report of 19,500 barrels) into a culvert leading to Talmadge Creek. Talmadge Creek is a tributary to the Kalamazoo River. The response site is along Talmadge Creek and the Kalamazoo River running from Marshall, Michigan, to downstream of Battle Creek, Michigan. The Kalamazoo River is bordered by marshland and developed properties for the approximate 30-mile stretch of the response site.

1.1.4 Preliminary Removal Assessment/Removal Site Inspection Results

Approximately 30 miles of the Kalamazoo River have been impacted. The Kalamazoo River experienced flooding before and after the spill. The river levels have fallen and stranded oil in some backwaters and wetlands. Talmadge Creek has been boomed off at the confluence to the Kalamazoo River. Containment and absorbent boom have been deployed along the Kalamazoo River and Talmadge Creek. Containment and absorbent boom have also been deployed in Morrow Lake.

1.1.5 Enforcement Activities, Identity of Potentially Responsible Parties

Enbridge is the RP.

On July 27, 2010, EPA issued an Administrative Order under section 311(c) of the Clean Water Act to Enbridge. Enbridge is actively addressing all the deliverables required by the Order including but not limited to the following: *Operational Health and Safety Plan*; *Pipeline Repair Workplan*; *Sampling and Analysis Plan*; *Quality Assurance Project Plan*; *Oil Containment and Recovery Plan*; *Source Area Remediation Plan*; *Remediation Plan for Downstream Impacted Areas*; and *Waste Treatment, Transportation, and Disposal Plan*.

1.2 Incident Objectives and Command Emphasis

Incident Objectives

- 1) Ensure health and safety of the public and response & recovery personnel.
- 2) Maintain the isolation of Talmadge Creek and Kalamazoo River from the source area.
- 3) Contain and recover oil and contaminated vegetation in Talmadge Creek and Kalamazoo River.
- 4) Maintain effective unified communications with cooperating & assisting agencies and the public.

- 5) Perform remediation & restoration of all affected public & private areas of river & river systems.
- 6) Provide protection of environmentally and culturally sensitive areas including wildlife and historic properties.
- 7) Protect threatened and endangered species & continue to recover & rehabilitate injured wildlife.
- 8) Maintain Joint Information Center function.
- 9) Continue to collect, coordinate, manage and communicate environmental and public health data.
- 10) Obtain input from multi-agency Science Team to help establish protocols to guide cleanup of environmentally impacted areas.

Command Emphasis

- 1) Enbridge to assume primary responsibility for planning cycle and IAP development by 8/16/10
 - Continue transition of EPA logistics/procurement functions to Enbridge;
 - Continue transition of IAP development from EPA to Enbridge; and
 - Monitor effectiveness of IAP briefing and use by Operations.
- 2) Concentrate resources for river, shore, and floodplain cleanup and sheen management in Division C.
- 3) Review SCAT recommendations with Science Team, with emphasis on Division C, to coordinate near term cleanup efforts.
- 4) Identify and secure facility for new unified command post.
- 5) Continue efforts to remove oil and contaminated soil from pipeline release zone.
- 6) Re-evaluate and enhance current, continuous, comprehensive on-water analytical sheen and subsurface monitoring, sediment investigation, reporting, control and recovery at Morrow Lake.
- 7) Continue to monitor overall effectiveness of community outreach.
- 8) Science team, SCAT team and Unified Command visitation of work areas in Division A, B, and C.

1.3 Strategic Considerations

- 1) Continue transition of planning cycle and IAP development to Enbridge.
- 2) Evaluate need for operational ramp-up in Division C below Ceresco Dam.

2. Current Activities

2.1 Operations Section

2.1.1 Narrative

The response site extends from the pipeline break to the dam at the end of Morrow Lake. The response has been divided into two Oil Recovery and Cleanup Branches: East and West. These branches have been geographically divided into five Divisions, A through E, with Division A starting at the pipeline break and Division E ending at the western edge of Morrow Lake (see attached figure). The East Branch includes Divisions A and B and the West Branch includes Divisions C, D and E. Division C is currently an area of command emphasis and has been further broken down into four groups performing similar response activities in order to accelerate cleanup progress in that Division. Certain control points are denoted by division letter then control point number (i.e. C3 refers to control point three within Division C), and the entire length of the site is now divided into one-quarter mile sections based on milepost.

The following activities occurred during the reporting period from 1900 hours on August 15 to 1900 hours on August 16, 2010:

Division A

Division A has extended into the upstream portion of Division B (to the upstream side of location B2) since the operations required there are more similar to those in Division A than Division B. This area is referred to as Area A1, and operations in that area are reported here with Division A.

Enbridge

Enbridge conducted oil collection at the release site with vacuum tankers. Enbridge removed contaminated soil to the containment and disposal site. Enbridge continued non-destructive testing, sandblasting and coating of the excavated pipeline. In Area A1, Enbridge continued boom maintenance and clearing activities along Talmadge Creek, and completed installing silt fence along the creek.

EPA

EPA observed Enbridge sandblasting the pipeline. Enbridge continued to vacuum water from the excavation trench and oily water from the impacted wetland south of the pipeline release. Oil was vacuumed from ponds of standing water. Contaminated soils were placed onto staging pads prior to off-site disposal. In Area A1, a silt fence was installed in Talmadge Creek north of location B1.5. EPA observed Enbridge conducting skimming operations at locations B1 and B1.5. Enbridge has placed sausage boom every 50 feet in Talmadge Creek in Area A1.

Division B

Enbridge

Enbridge continued oil collection at boom containment sites and replaced contaminated boom as required. Enbridge placed additional swamp mat roads along Talmadge Creek, moving downstream. Crews worked on scraping oiled bank vegetation and soil downstream to the Kalamazoo River and placed the material in a containment site, in accordance with SCAT recommendations. Enbridge installed silt fence along Talmadge Creek as required. Enbridge completed construction of Staging Area 4 and it is now in service. Enbridge continued building containment cell 2 between 15 ½ Mile Road and the Kalamazoo River.

Enbridge reported that they have conducted shoreline scraping along approximately 3,213 feet along the north bank of the Kalamazoo River and 4,818 feet along the south bank in Division B, for a total of 8,031 feet.

EPA

During daytime operations, EPA observed excavation work in Talmadge Creek. Talmadge Creek has been excavated approximately 75 % of the way to location B3. Excavated oil-contaminated soil was transported to the staging area prior to disposal. Enbridge continued placing swamp mats for access to Talmadge Creek. EPA observed skimming and vacuuming operations at locations B2, B2.5, B3, B4, B4.7 and B5. There was no night excavation of Talmadge Creek north of location B2.

EPA and START conducted turbidity monitoring in Talmadge Creek while Enbridge crews were excavating the bank. Enbridge continued collecting oil at collection points and scraping the banks of Talmadge Creek between B2 and B3.

USCG observed activities at all locations in Division B.

Division C

Enbridge

Enbridge continued shoreline cleaning, cutting, and removal of oiled vegetation. Crews removed lily pads above the dam. Enbridge conducted boom maintenance at location C3.2, and skimming operations and boom maintenance at locations C5 and C6.

Enbridge reported that they have completed shoreline washing along approximately 3.85 miles of the Kalamazoo River bank in Division C.

EPA

EPA observed skimming, boom maintenance, vegetation cleaning and removal operations at locations C1 and C6 during the night operations.

EPA observed skimming, boom maintenance, and oiled vegetation removal at all locations in Division C during daytime operations. EPA saw approximately 34 to 40 boats in the water between MP2.25 and MP6 conducting boom maintenance and removing oiled vegetation, and 20 to 30 boats between MP6.25 and MP9.75 removing and/or replacing boom. EPA observed large amounts of oil at location C1.1, and observed that much of the oil that had been present at location C1 had been removed. An oily sheen was observed at location C1. Crews were collecting oiled debris at location C6.

USCG observed the removal of oiled vegetation and debris at locations C4 and C0.

Division D

Enbridge

Enbridge conducted boom maintenance and skimming operations, and replaced adsorbent pads. Gabion boxes filled with adsorbent boom were placed in location D1. Approximately 800' of containment boom were replaced at location D0.5.

EPA

EPA observed skimming and vacuuming operations, the collection of oiled debris, and/or boom maintenance activities at locations D0.5, D1, D2, D2.5, D3 and D5. EPA observed crews installing a new silt curtain at location D2, and later observed that the silt curtain was in place and collecting sediment and tar flakes.

Division E

Enbridge

Enbridge conducted boom maintenance and replaced adsorbent pads.

Morrow Lake Task Force

The Morrow Lake Task Force conducted sheen monitoring and found no additional sheen or tar balls.

EPA

EPA observed the air curtains at locations E1, E3 and E4. The air curtain at location E1 was working well, the air curtain at location E3 was only partially working, and the air curtain at location E4 was down. EPA observed that the silt curtain at location E4 was in place and collecting sediment and tar flakes.

Branch Operations

EPA, USCG and Enbridge Operations have a Monitoring Branch, Wildlife Branch and Air Ops Branch that conduct activities in all Divisions.

Monitoring Branch

Enbridge

Enbridge planned to collect approximately 30 surface water samples, 15 potable water samples, 1 sediment sample, 8 24-hour grab air samples, 22 air mini-summa samples, 4 air grab samples and 4 passive dosimeter samples. Enbridge continued its focused air sampling program around the Baker Estates trailer park, the Ceresco dam and the pipeline release site. Real-time air monitoring for benzene and VOCs continued.

Enbridge reported that they collected 37 surface water samples and 8 private well samples.

EPA

EPA conducted air monitoring in all divisions including the pipeline release zone. EPA collected tedlar bag air samples in the Division B exposure units and the five focus areas (Daycare Center, Baker Estates, Friendship Lane, Ceresco Dam, and Tau Drive). A total of 47 air samples were reported as being collected and sent to the laboratory for analysis. EPA collected upstream background sediment samples for analysis from one location in Talmadge Creek and three locations in the Kalamazoo River.

The GLNPO Mudpuppy crew collected sediment and surface water samples from stations 1, 3, 7, 8 and 10 in Morrow Lake. Sheen was observed on sediment samples from stations 1 and 3.

Wildlife Branch

USFWS worked with the Wildlife Branch to address oil-impacted wildlife. The wildlife center continued to receive oiled animals collected along the Kalamazoo River. There are 219 animals in live care, the majority of which are Canada Geese and turtles. A total of 118 animals have been rehabilitated and released.

Air Ops Branch

Enbridge conducted six over flights of the river. EPA conducted two over flights of the river.

Special Operations

EPA special operations continued to work with Enbridge's T&D representative and observed collection operations at locations B4.7 and B5.

2.1.2 Progress Metrics

All progress metrics in Section 2.1.2 are as reported by Enbridge unless otherwise indicated.

Boom Report

Number of Locations	40
Boom Deployed (feet)	165,565

Note: Since the transition of EPA's contractor's to Enbridge at 1900 hrs on 08/12/10, all boom is now controlled by Enbridge.

Waste Tracking

Waste Stream	Quantity Shipped 8/15/2010	Cumulative Quantity Shipped*	Quantity On-Site Awaiting Disposal*
Soil ¹	800 yd ³	6,164 yd ³	17,000 yd ³
Debris ²	600 yd ³	3,915 yd ³	690 yd ³
Untreated Water ³	105,128 gallons		
Pre-treated Water ⁴	163,000 gallons		

* Information for water (other than daily quantity shipped) is reported in other tables below.

1. Benzene-impacted soil is being sent to Envirosafe.
2. Roll-off boxes containing waste sorbents, boom, pads, plastic, PPE, and oiled vegetation and biomass are being sent to Michigan Disposal.
3. Untreated water (hazardous waste) is being sent to Dynecol.
4. Pre-treated water is being sent to the Battle Creek POTW.

Oil-Water Recovery Tracking

Note: Some of the values in the tables below have been audited and reconciled by Enbridge and may not correlate with previously reported values.

Oil-Water Collected by Location	
Location	Cumulative Total Collected (gallons)
Division A	3,104,795
Division B	2,358,725
Division C	673,800
Division D	105,650
Division E	35,450
Undetermined	223,000
TOTAL	6,501,420

Oil-Water Shipped Off-Site		
Oil-Water Leaving Site	Destination	Cumulative Quantity Shipped (gallons)
Untreated Water (Hz.Waste)	Dynecol, Detroit MI	866,540
Pre-treated Water	Battle Creek POTW	1,184,500
Oily Water	RP facility, Griffith IN	1,984,000
TOTAL		4,035,040

Oil-Water Volume Summary (gallons)	
Oil-Water Collected	6,501,420
Oil-Water Shipped Off-site	4,035,040
OIL-WATER REMAINING ON-SITE	2,466,380

Oil-Water Separation at Griffith IN Facility (gallons)	
Oil	567,000
Water	1,417,000
TOTAL	1,984,000

2.2 Planning Section

The EU reviewed Enbridge's *Quality Assurance Project Plan* and *Sampling and Analysis Plan* and provided comments to the IC.

The ENVL briefed the UC on air, sediment, and surface water sampling results, and met with the CCPHD to discuss potable well sampling results. The ENVL met with the Public Health Unit to discuss the exposure unit grids that are ready for re-occupancy based on air sampling results.

SCAT field teams continued to review shoreline cleanup activities and the SCAT Leader scheduled additional cleanup method testing and demonstrations.

The USGS field team set survey reference points and conducted bathymetric surveys in Division C.

The DMU conducted training on Scribe for personnel from MDNRE, Calhoun County, Kalamazoo County, and the City of Battle Creek. The DMU continued to manage field and analytical data in the Scribe database and implemented additional QA/QC measures for Scribe.

The Resource Unit completed the IAP for the Operational Period from August 17-18, 2010.

2.2.1 Anticipated Activities for Next Reporting Period

In the next operational period, Operations anticipates performing the same activities as in the previous operational period.

2.2.2 Issues

The Public Health Unit lifted the recommended evacuation for exposure units 4, 7, 10 and 13 in the northwest portion of the recommended evacuation zone. The protocol and information packet that the Public Health Unit developed for residents returning to their homes after extended absences was approved by the UC.

2.3 Logistics Section

EPA Logistics met with the Enbridge Move Team to discuss the ICP relocation.

2.4 Finance Section

The current NPFC issued ceiling (based on EPA requests) is \$11 million. Approximately 87 % of the ceiling has been spent through August 15, 2010, with a burn rate of \$351,333 per day. These cost summaries reflect only EPA-funded expenditures for the incident.

		Est. Expended	Est Burn Rate (\$)
EQM	T057	\$1,276,393	\$1,500
	T060	<u>55,500</u>	18,500
LATA		1,451,396	0
ER LLC		723,669	0
ERRS Contractors			
Totals		\$3,506,958	\$20,000
START Contractor:			
WESTON		2,218,887	164,367
Contractor Sub-Totals		\$5,725,845	\$184,367
Federal & Other Agencies			
Total Federal & Other Agencies		\$2,684,470	\$123,415
Sub-Totals		\$8,410,315	\$307,782
Indirect Cost (14.15%)		1,190,060	43,551
Total Est. Oil Spill Cost		\$9,600,375	\$351,333

2.5 Safety Officer

There were two minor incidents that required first aid, and one minor motor vehicle incident, with no injuries reported. The safety officer completed the follow-up investigation on the boat incident that occurred on August 15, 2010.

2.6 Liaison Officer

The LNO moderated and facilitated the Cooperating and Assisting Agencies meeting and transitioned the lead for these meetings to Enbridge.

2.7 Information Officer

PIO staff sent out a press release to more than 800 media outlets announcing a phone-in press conference, and facilitated the press conference.

A public meeting is scheduled for August 19, 2010, at the Kalamazoo County Expo Center/Fairgrounds located at 2900 Lake Street in Kalamazoo. The event will include an open house at 1800 hrs, public meeting at 1900 hrs, and an open house following the public meeting.

JIC staff operated the media inquiry line and performed media monitoring.

Media Inquiry Line (888-363-8632)

Calls received during reporting period: **4**

Enbridge reported the following call volume and community center visits:

Oil Spill Public Information Hotline (800-306-6837)

Calls received during reporting period: **63**

Community Center Visits: 38

Visits by location during reporting period:

Battle Creek	28
Marshall	10

Enbridge reported that it received three inquiries from its www.response.enbridgeUS.com website.

2.8 Response Actions to Date

Recovery of oil and contaminated soil and debris continues. Containment boom, sorbent boom, skimming equipment, vacuum trucks and other equipment have been used to support oil collection and removal along Talmadge Creek and the Kalamazoo River. Contaminated soils are being excavated from Divisions A and B. Replacement of the damaged pipeline and stabilization of the excavation are progressing. Contaminated vegetation along the creek and river is being cleaned or removed to control sheen. Recovered materials are being handled on-site and prepared for off-site transport. Tanker trucks are transporting the recovered oil to a facility owned by the RP with available storage in Griffith, Indiana. Oil-contaminated soils and other materials are being transported off-site for disposal.

EPA, ERT, START and RP contractors, with the support of the ERT Mobile Lab and Michigan National Guard Civil Support Team, have monitored and sampled air quality along the river and throughout multiple residential areas. A heavy emphasis was placed on specific monitoring for benzene as it is a recognized contaminant of concern for this response.

Water samples were collected for analysis from surface water, river and lake water columns, and private drinking wells along the length of the impacted areas of the Kalamazoo River. Water samples also were collected downstream of the Morrow Lake Dam. Validated analytical sampling results are now being posted to the public incident website (<http://www.epa.gov/enbridgespill/data/datawater.html>).

Enbridge removed the affected area of pipe, followed the cut out/repair plan, and completed a pipe investigation (50 feet upstream and downstream of the cut points) on August 7, 2010. The affected length of pipe has been repaired but is not yet operational.

A voluntary evacuation was issued by CCPH, in consultation with MDCH and ATSDR, for several residences located immediately downstream of the spill site along Talmadge Creek, up to its confluence with the Kalamazoo River. This voluntary evacuation was based on review of air monitoring results for benzene around oil collection areas. On August 16, 2010, CCPH lifted the recommended evacuation for the northwest portion of the voluntary evacuation zone after air monitoring and sampling results showed benzene levels below established action levels. Air monitoring and sampling of the remaining affected areas is being conducted to determine when re-occupancy of those remaining areas can occur, in accordance with the re-occupancy strategy approved by the UC.

A Contingency Plan for Morrow Lake has been developed in case oil moves past the lake.

EPA has disapproved the following plans submitted by Enbridge: *Remediation Plan for Downstream Impacted Areas*, *Source Area Remediation Plan*, *Quality Assurance Project Plan* and *Sampling and Analysis Plan*. Revised versions of the plans submitted by Enbridge are under review.

3. Participating Entities

3.1 Unified Command

U.S. EPA

MDNRE

Michigan State Police Emergency
Management Division

City of Battle Creek

Calhoun County Public Health
Department

Calhoun County Emergency
Management

Kalamazoo County Sheriff

Enbridge (Responsible Party)

3.2 Cooperating and Assisting Agencies

Cooperating Agencies

51st Civil Support Team Michigan
National Guard

ATSDR

Allegan County Emergency
Management

American Red Cross

Calhoun Conservation District

Calhoun County Commission

City of Kalamazoo

City of Marshall

Emmett Township

Federal Energy Regulatory Commission

Fredonia Township

Kalamazoo County Office of Emergency
Management

Kalamazoo River Watershed Council

Marshall Area Firefighters Ambulance
Authority

Marshall Police Department

Marshall Township Government and
Fire Department

Michigan Department of Agriculture

MDCH

MIOSHA

National Transportation Safety Board

Natural Resource Group

NOAA

Oakland County HAZMAT

OSHA

PHMSA

USCG

U.S. Department of the Interior/USGS

USFWS

3.3 Congressional Presence

State Representative Jase Bolger

State Representative Kate Segal

State Representative Ken Kurtz

State Representative Phil Browne

State Representative Phyllis Browne

State Representative Bob Geuck

State Representative Tanya Schuitmaker

State Senator Mike Nofs

U.S. Congressman Mark Schauer

U.S. Senator Carl Levin

U.S. Senator Debbie Stabenow

4. Personnel On Site

Agency/Entity	Numbers reported
EPA	56
MDNRE	28
Michigan State Police	9
City of Battle Creek	2
CCPH	4
MDA	1
MDCH	6
Calhoun County Sheriff	10
Kalamazoo County Sheriff	2
USCG	10
USFWS	13
USDA	2
ERRS	2
START	91
Enbridge	28
Enbridge Contractors	1165
Total	1429

5. Definition of Terms

ATSDR	Agency for Toxic Substances and Disease Registry
CCPH	Calhoun County Public Health
CIC	Community Involvement Coordinator
DMU	Data Management Unit
EMT	Emergency Medical Technician
ENVL	Environmental Unit Leader
EPA	Environmental Protection Agency
ERRS	Emergency and Rapid Response Services
ERT	Emergency Response Team
EU	Environmental Unit
GLNPO	Great Lakes National Program Office
H ₂ S	Hydrogen Sulfide
IAP	Incident Action Plan
ICP	Incident Command Post
IN	Indiana
JIC	Joint Information Center
LEL	Lower Explosive Limit
LNO	Liaison Officer
LSC	Logistics Section Chief

MDA	Michigan Department of Agriculture
MDCH	Michigan Department of Community Health
MDMB	Michigan Department of Management and Budget
MDNRE	Michigan Department of Natural Resources and Environment
MI	Michigan
MIOSHA	Michigan Occupational Safety and Health Administration
NRC	National Response Center
NOAA	National Oceanic and Atmospheric Administration
NPFC	National Pollution Fund Center
OSHA	Occupational Safety and Health Administration
PHMSA	Pipeline and Hazardous Materials Administration
PIO	Public Information Officer
PPE	Personal Protective Equipment
ppm	Parts Per Million
POTW	Publicly Owned Treatment Works
RP	Responsible Party
SCAT	Shoreline Contamination Assessment Team
START	Superfund Technical Assessment and Response Team
T&D	Transfer and Disposal
UC	Unified Command
USDA	United States Department of Agriculture
USCG	United States Coast Guard
USDOT	United States Department of Transportation
U.S. EPA	United States Environmental Protection Agency
USFWS	United States Fish and Wildlife Service
yd ³	Cubic Yards
VOCs	Volatile Organic Compounds

6.0 Source of Additional Information

6.1 Additional Information

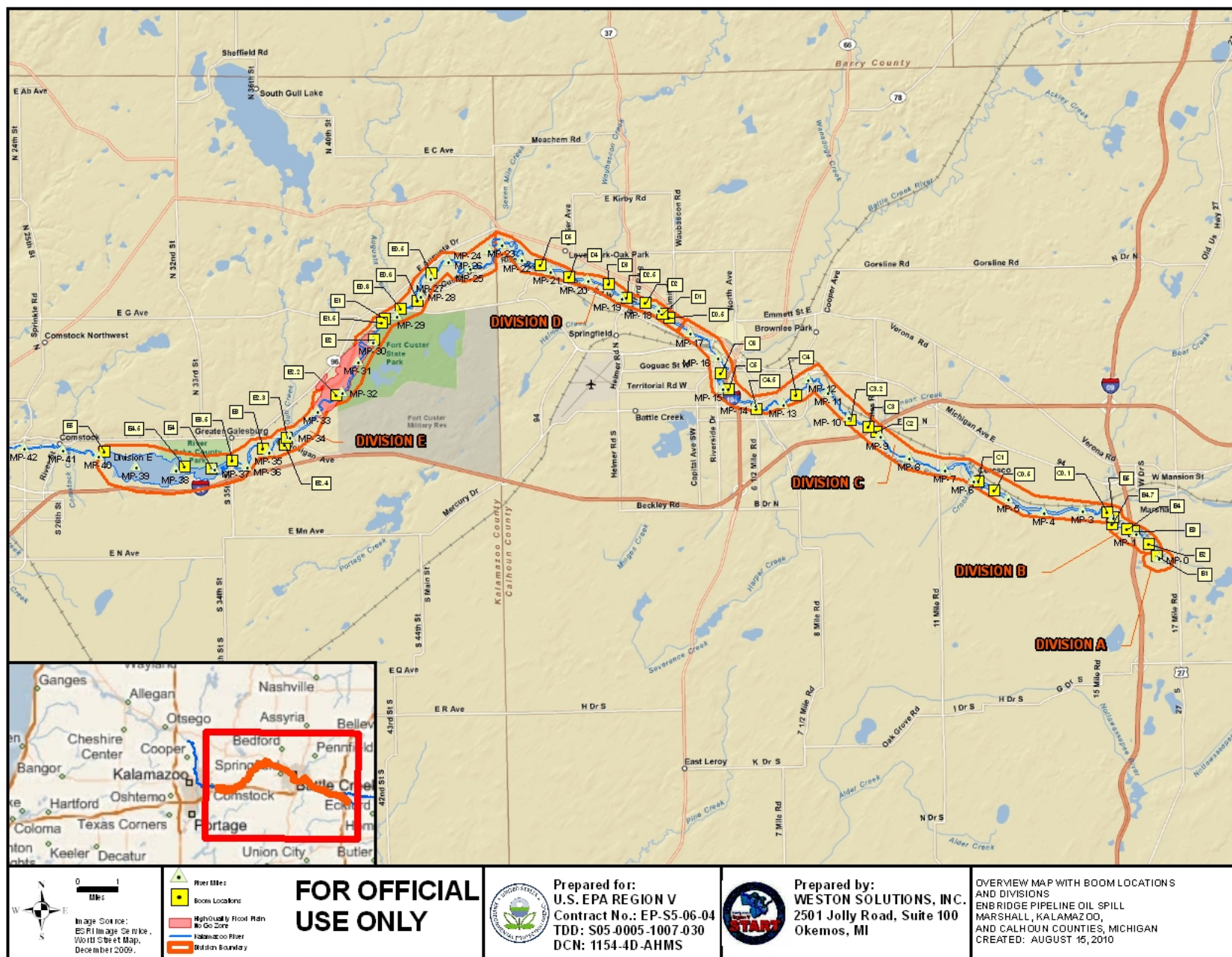
For additional information please refer to <http://www.epa.gov/enbridgespill.html>. For sampling analysis data, please see <http://www.epa.gov/enbridgespill/data/datawater.html>

6.2 Reporting Schedule

SITREPs have been created daily and will continue until the UC establishes a different reporting schedule.

7.0 Situational Reference Materials

See attached figure, entitled “Overview Map with Boom Locations and Divisions,” for more information.



File: W:\0.1.1.5\planning\epa_share\gis_data\Marshall_Oil_ERV\GIS\MXD\20100815\Boom_Locations_Overview_8-5\11_20100815.mxd, 15-Aug-10 18:29, D:\