

US EPA ARCHIVE DOCUMENT

Interactive GLRI Watershed Remediation Tracking System



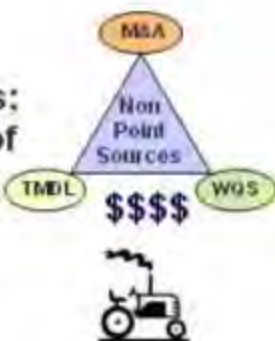
Position 45°35'26\"/>

Source: NASA, NGA, USGS

ADMINISTRATIVE INDICATORS

LEVEL 1:

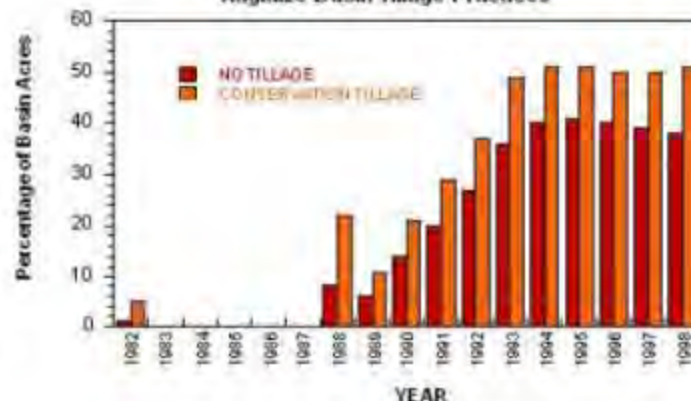
Ohio EPA awards 319 grants; goal is achieve restoration of impaired uses (meet WQS); Ohio DNR & NRCS develop NPS management & abatement strategies



STRESSORS

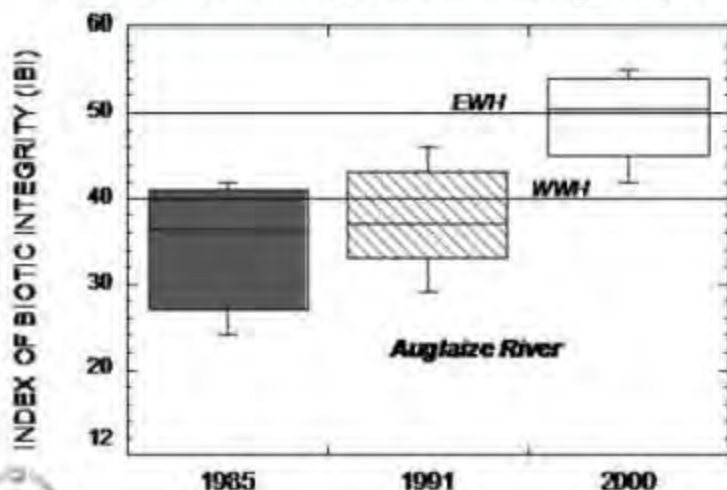
LEVEL 2: Agricultural Producers Implement Conservation Practices

Auglaize Basin Tillage Practices



RESPONSE

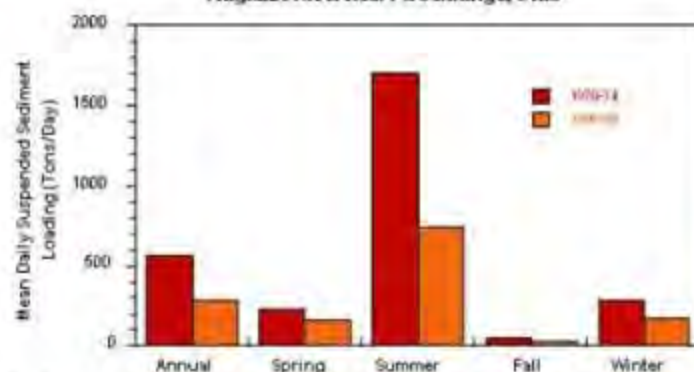
LEVEL 6: Biological assemblage improves



STRESS & EXPOSURE

LEVELS 3-5: BMPs Produce Reduced NPS loadings

Auglaize River near Ft. Jennings, Ohio



TSS decreased, water quality & habitat improved

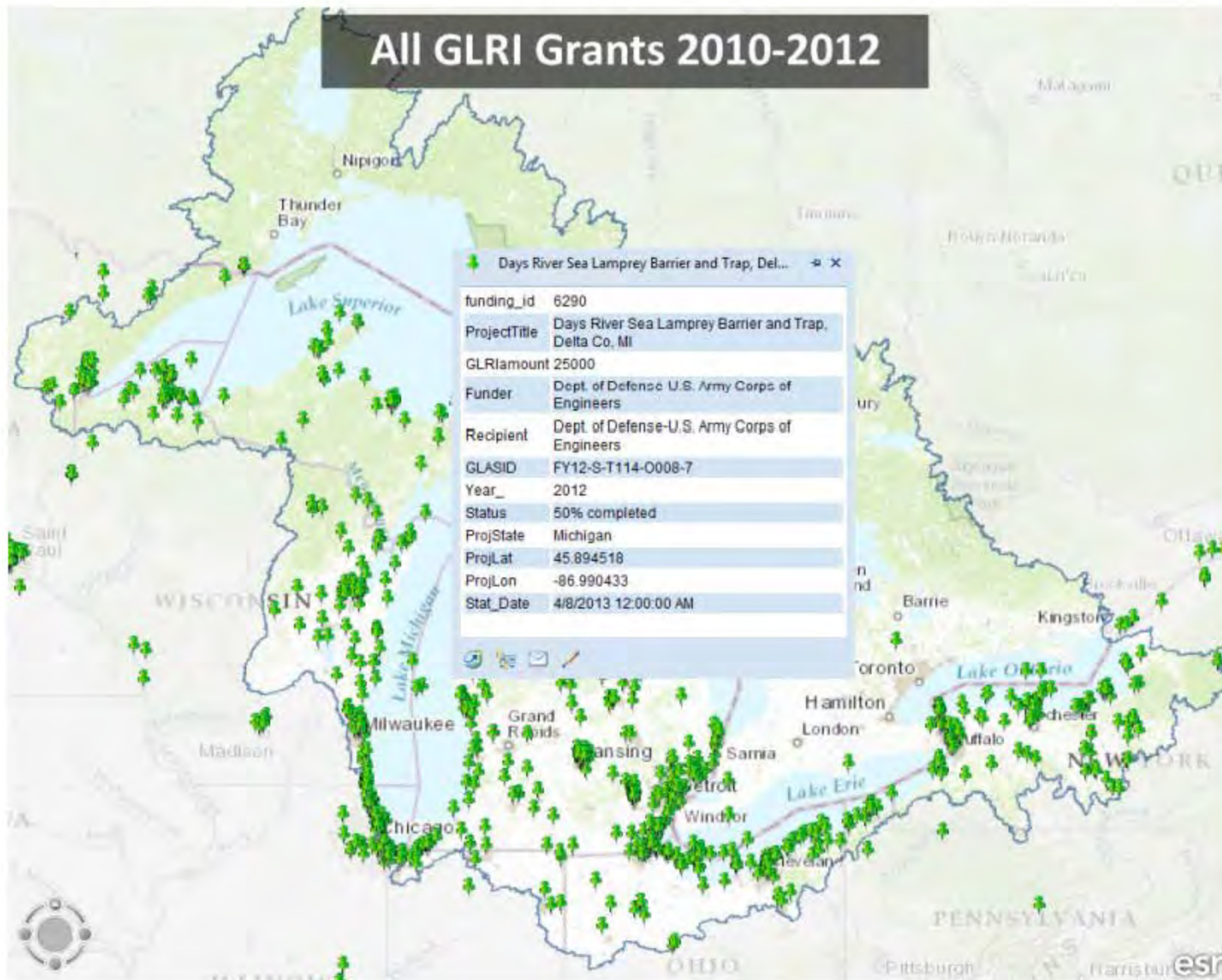


All GLRI Grants 2010-2012



Source: USGS
Source: NASA, NGA, USGS
TomTom, Intermap, Increment P Corp., GEBCO, USGS, FAO, NPS, NRCAN, GEBCO, IGN, Cadaster NL, Ordnance Survey, Esri Japan, METI, Esri

All GLRI Grants 2010-2012



Watershed Remediation GLRI Projects (2010-2012)



Source: USGS
Sources: NASA, NGA, USGS
TomTom, Intermap, Increment P Corp., GEBCO, USGS, FAO, NPS, NRCAN, GeoBase, IGN, Kadaster NL, Ordnance Survey, Esri Japan, METI, Esri

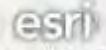
Watershed Remediation GLRI Projects (2010-12)

GLRI - Red Cliff Septic System Project

Lat	46.8557
Long	-90.789
GLRI	GLRI Grant
Name	GLRI - Red Cliff Septic System Project
Type	
Focus_Area	Nearshore Health and Nonpoint Source Pollution
Group	
Year	2010
State	Wisconsin
Recipient	Red Cliff Band of Lake Superior Chippewa
Contact	Laura Jean Armagost
Amount	365637
Funder	U.S. EPA
EPA_PO	Samardzich
Stat_Date	1/30/2012 12:00:00 AM
End_Date	12/31/2011 12:00:00 AM
Summary	This project will replace or provide major maintenance and upgrades to failed or failing septic systems on the Red Cliff Reservation. Some of the failed systems will be connected to the Tribal central wastewater system. Further, the Tribal Water
Sum_2	Resources Program intends to extend monthly surface water monitoring to include bacterial sampling of bathing and recreational areas.
Sum_3	
Sum_4	
Workplan	Click to view project workplan
Documents	Click to view project documents
Website	
Notes	
Grant_Numb	
GLAS_ID	00E00476-0 [FY10-G-RC8-O140-1]
GLTR_Rec1	GLTR Record 1
GLTR_Rec2	GLTR Record 2
GLTR_Rec3	
GLTR_Rec4	
GLTR_Datab	Click to GLRT Database
Ex_P_lbs	
Ex_N_lbs	
Ex_sed_ton	



Position 46°30'27"N 89°51'35"W



Source: NASA, NOAA, USGS



Great Lakes Restoration Initiative Workplan

Project Title:
RED CLIFF BAND OF LAKE SUPERIOR CHIPPEWA SEPTIC SYSTEM PROJECT

Total Project Funding:
\$345,637.00

Benefit to Organization:
The benefit of the septic repair project to the Red Cliff Community include the reduced risk to community health and reduced impact on the water resources of the Reservation and Lake Superior (potential reduction in nutrient loads), protection of near shore ecosystem health, and protection of tribal culturally significant uses of the Reservations water resources, e.g. ceremonial uses. Education and outreach on septic maintenance will be provided to homeowners, building their capacity to maintain their own systems in the future.

Point of Contact:
Laura Armagost, Water Resource Programs Manager, larmagost@redcliff-nsa.gov
Tracey E. Adler, Environmental Department Director, tracey_adler@redcliff-nsa.gov

Rough DRAFT 6-22-10 Hills Creek

5. **Workplan:** Applications must include a narrative statement which specifies the scope of work, milestones (preferably a schedule in chart or table format), the project budget, environmental outcomes and results, and your plan for measuring progress toward achieving outputs and outcomes (See Environmental Results Order 5700.7 at <http://www.epa.gov/ogd/grants/award/5700.7.pdf>). Please contact your USEPA Project Officer ("PO") to discuss what, if any, changes need to be made to the proposal narrative you previously submitted. *For your convenience, we have marked some items below (with "**"), which were not previously requested as part of the RFP.*

- a. **Project Title:** Hills Creek Stamp Sand Stabilization
- b. **Total Project Funding:** \$415,000
Expected in-kind match: \$ 30,000
- c. **Benefit to Organization*:** Describe how this project supports the mission of your organization. (Federal grants are not intended to principally benefit the Federal government.)

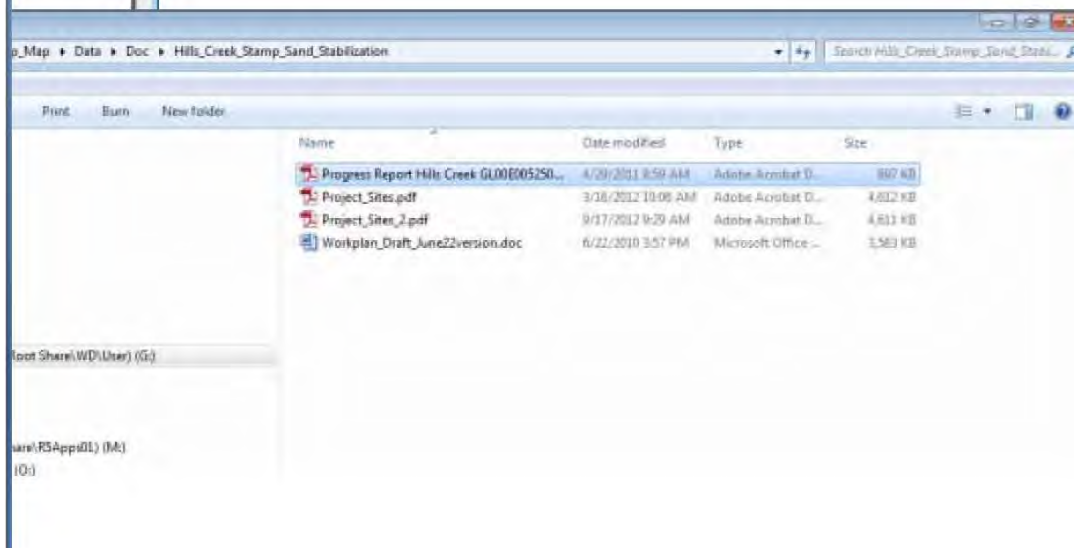
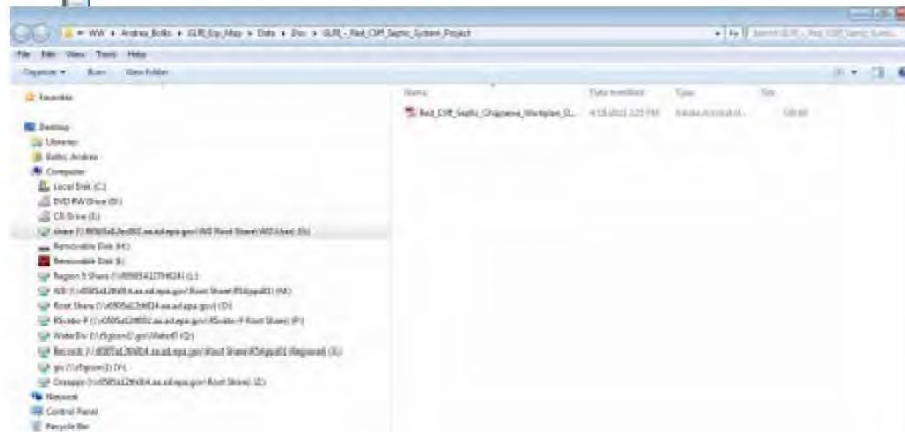
Following are the Vision and Mission for the Houghton Keweenaw Conservation District (HKCD):

HKCD Vision Statement
 The Residents/Landowners of Houghton and Keweenaw Counties will understand and appreciate our reliance on the area's natural resources and manage them wisely both individually and collectively.

HKCD Mission Statement
 The District will advise and assist the people of Houghton and Keweenaw Counties to wisely manage and use our natural resources through education, information, technical assistance and land stewardship.

The Hills Creek Stamp Sand Stabilization project directly supports HKCD's Mission and Vision. The Hills Creek project, when implemented, will help remediate the shoreline of Hills Creek and the river itself from damage caused by historic copper mining activity. Stabilizing the stamp sand will reintroduce vegetation to barren areas and improve the water quality of Hills Creek thereby improving human recreation opportunities and the cold-water fishery in Hills Creek. This will benefit local residents, visitors and the local economy that is dependent on tourism.

Helps local businesses and employment.





AWARD ACTION

GLRI Tracking and Reporting System

Project Title Hills Creek Stamp Sand Stabilization
Program Code GL - Great Lakes National Program Grants
Agreement Type Grant Agreement
Record Type N - New Project
IGMS Number 00E00525-0
 Other actions associated with this award exist in the database.
[Click here to open a different action](#)

IGMS Document Links

- <= Application
- <= Commitment Notice
- <= Funding Recommendation
- <= Award document

AWARD DETAILS

Focus Area
 3 - Nearshore Health and Nonpoint Source Reduction
Program Area
 Innovative Environmental Approaches

Applicant Name HGHTNKWENAW - Houghton Keweenaw Conservation District
Applicant Type Special District
Applicant State MI
Congressional District 99

Total Federal \$ Awarded	Amount \$ Requested	Amount \$ Awarded This Action
\$415,000	\$415,000	\$415,000

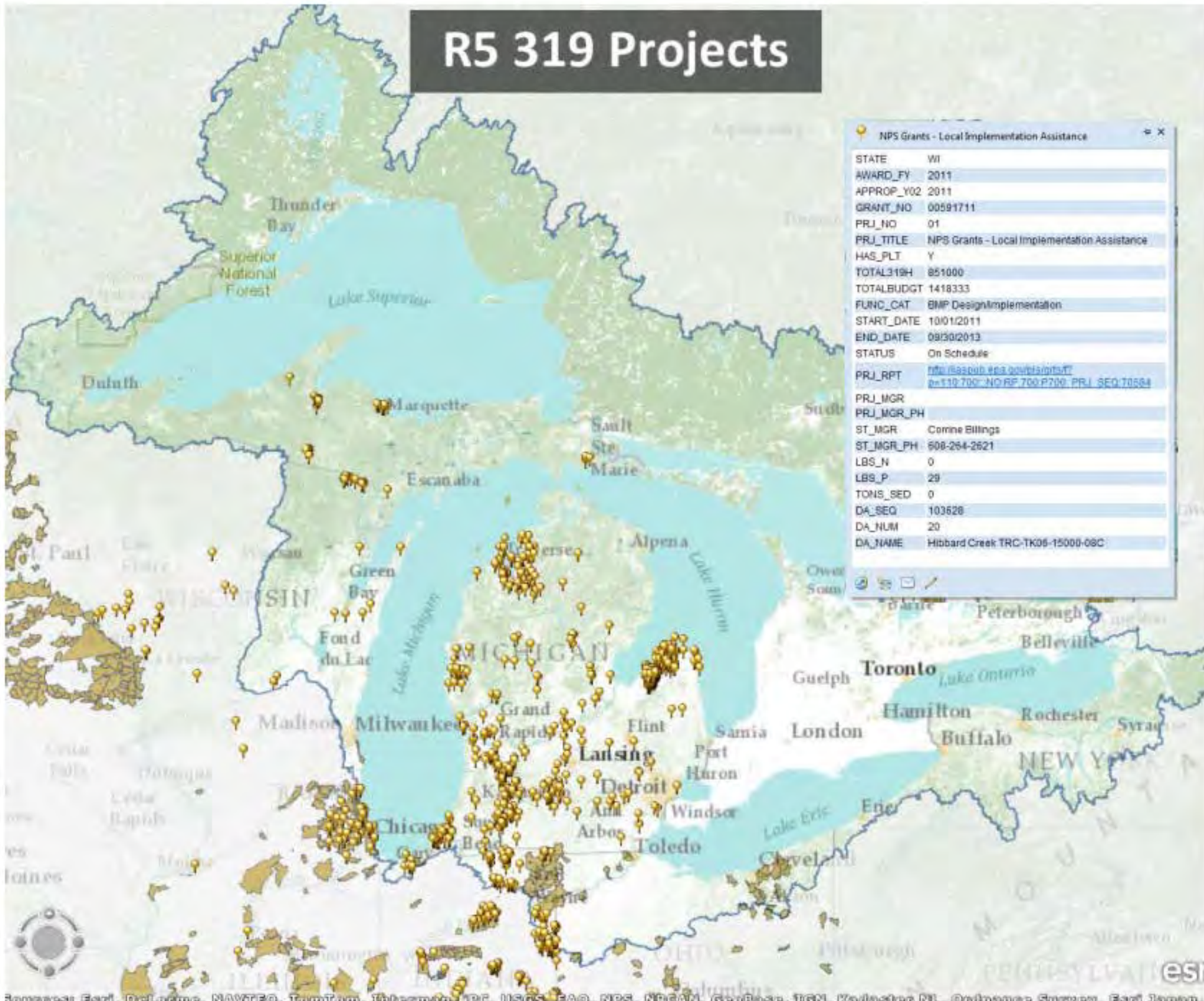
FY	Fund	PRC	Req No	Award Amount	Award %	Paid Amount	Paid %
1011	B	403BJ7E	1005HNX064	\$415,000	100%	\$305,612	74%

[View All Financial Data For This Award](#)

Budget/Project Period		PO Rajen Patel
Budget Start 9/1/2010	Budget End 12/30/2013	GS Kimberly Houston-Williams
Project Start 9/1/2010	Project End 12/30/2013	TC Rajen Patel.
Full / Partial Award Full	Award Date 9/21/2010	Acceptance Date 10/19/2010

Change Requests
 10/22/2010 - Administrative Correction - Notification
 01/20/2011 - EPA Contact Information - Notification
 09/16/2011 - EPA Contact Information, Rebudgeting (Major >10%), Scope of Work (Major) - Amendment

R5 319 Projects



STATE	WI
AWARD_FY	2011
APPROP_Y02	2011
GRANT_NO	00591711
PRJ_NO	01
PRJ_TITLE	NPS Grants - Local Implementation Assistance
HAS_PLT	Y
TOTAL319H	851000
TOTALBUDGT	1418333
FUNC_CAT	BMP Design/Implementation
START_DATE	10/01/2011
END_DATE	09/30/2013
STATUS	On Schedule
PRJ_RPT	http://aspub.epa.gov/aspubstat?e=110700:NO:RF:700:P700:PRJ_SEQ:70584
PRJ_MGR	
PRJ_MGR_PH	
ST_MGR	Corinne Billings
ST_MGR_PH	608-264-2621
LBS_N	0
LBS_P	29
TONS_SED	0
DA_SEQ	103628
DA_NUM	20
DA_NAME	Hibbard Creek TRC-TK06-15000-09C

GRTS Project Print - Windows Internet Explorer
http://iaspub.epa.gov/pls/grts/f?p=110:700:::NO:RP,700:P700_PRJ_SEQ:70584

Nonpoint Source Project Summary

This report was generated from the Environmental Protection Agency's Grants Reporting and Tracking System

[Click here to return to the GRTS Homepage](#) [Click here to print this page](#) [\[X\]Close this window.](#)

Project Information

Grant #: 00591711 Award Fiscal Year: 2011 Region: 05 State: WI
Project Number: 01 State Project Number: 1 Statewide: No
Project Title: NPS Grants - Local Implementation Assistance
Project Manager: _____ Phone: _____
State Project Manager: Corinne Billings Phone: 608-264-2621
Will Have/Has Pollutant Load Data: Yes TMDL: Implementing a TMDL

Project Schedule

Project Start Date: Did Start On 10/01/2011 (MM/DD/YYYY)
Project End Date: Will Be Completed On 09/30/2013 (MM/DD/YYYY)
Comments: _____

Project Status

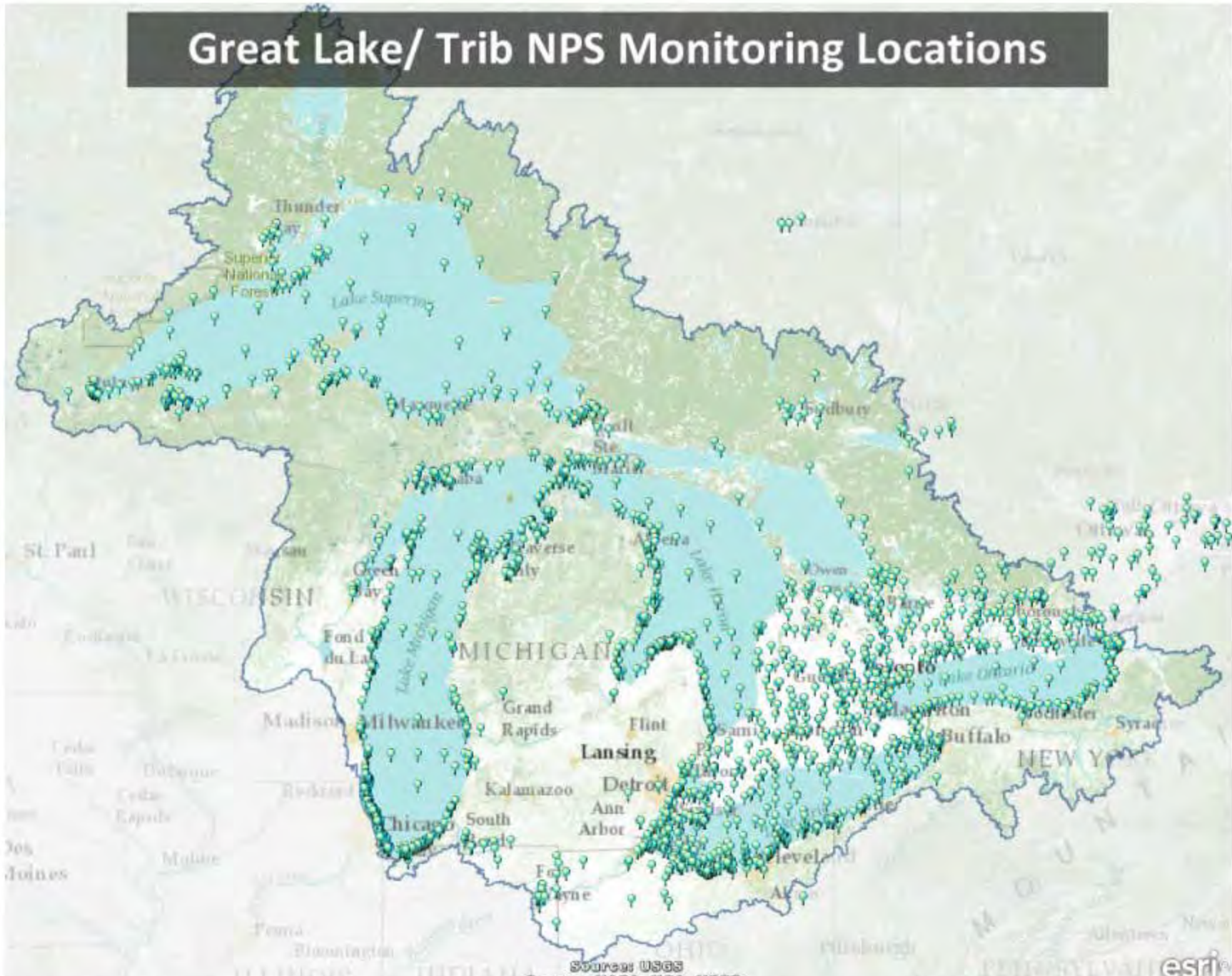
Current Status	Reporting Period Date	Comment
On Schedule	10/29/2012	

Project Budget

Grant Information

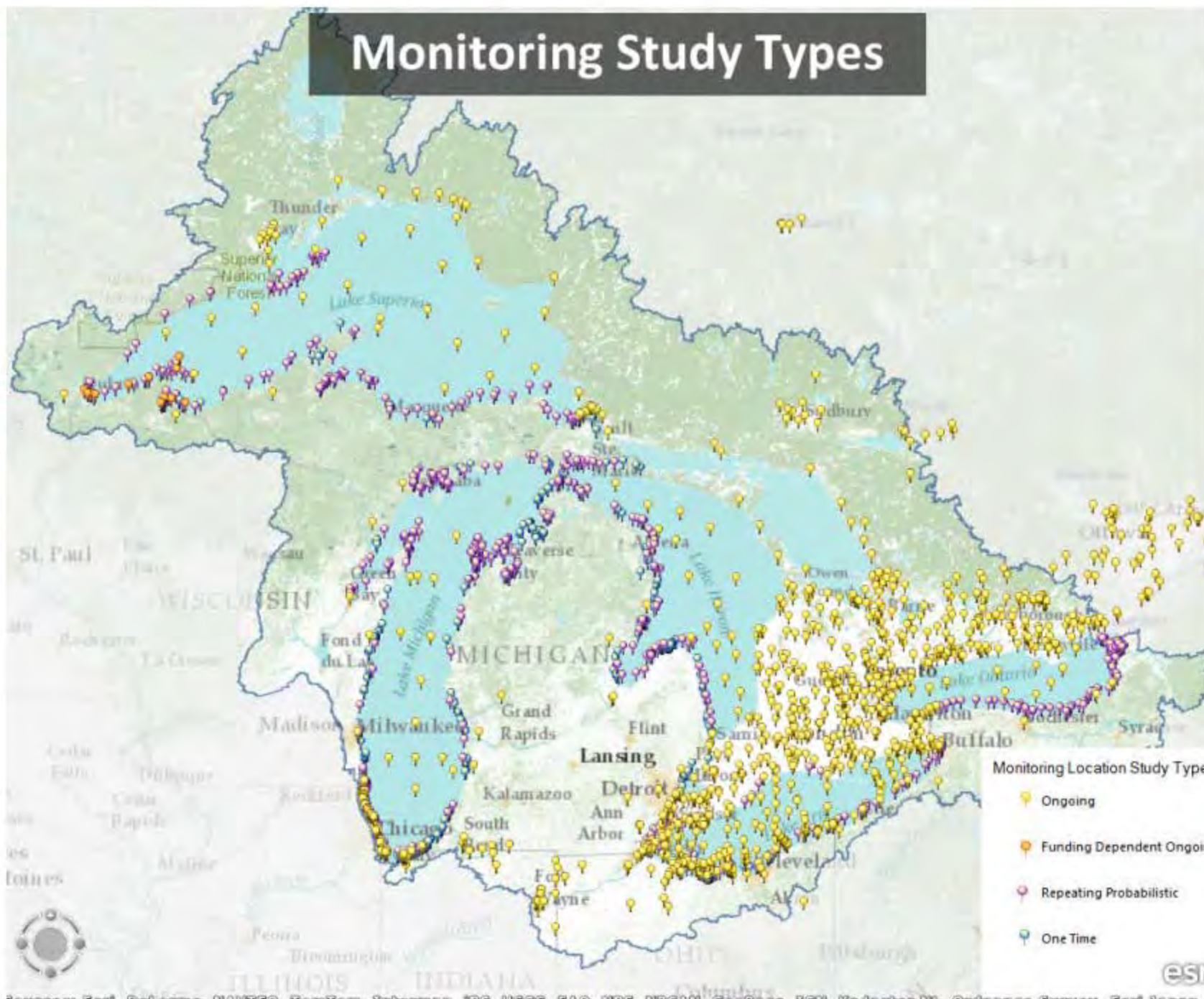
Cumulative Award for Grant: \$2,727,000
Total 319(h) Funds for all Projects: \$2,727,000

Great Lake/ Trib NPS Monitoring Locations



Sources: USGS, NASA, NGA, USGS, DeLorme, NAVTEQ, TomTom, Intermap, IPC, USGS, FAO, NPS, NRCAN, GeoBase, IGN, Kadaster NL, Ordnance Survey, Esri Japan, METI, Esri China (C)

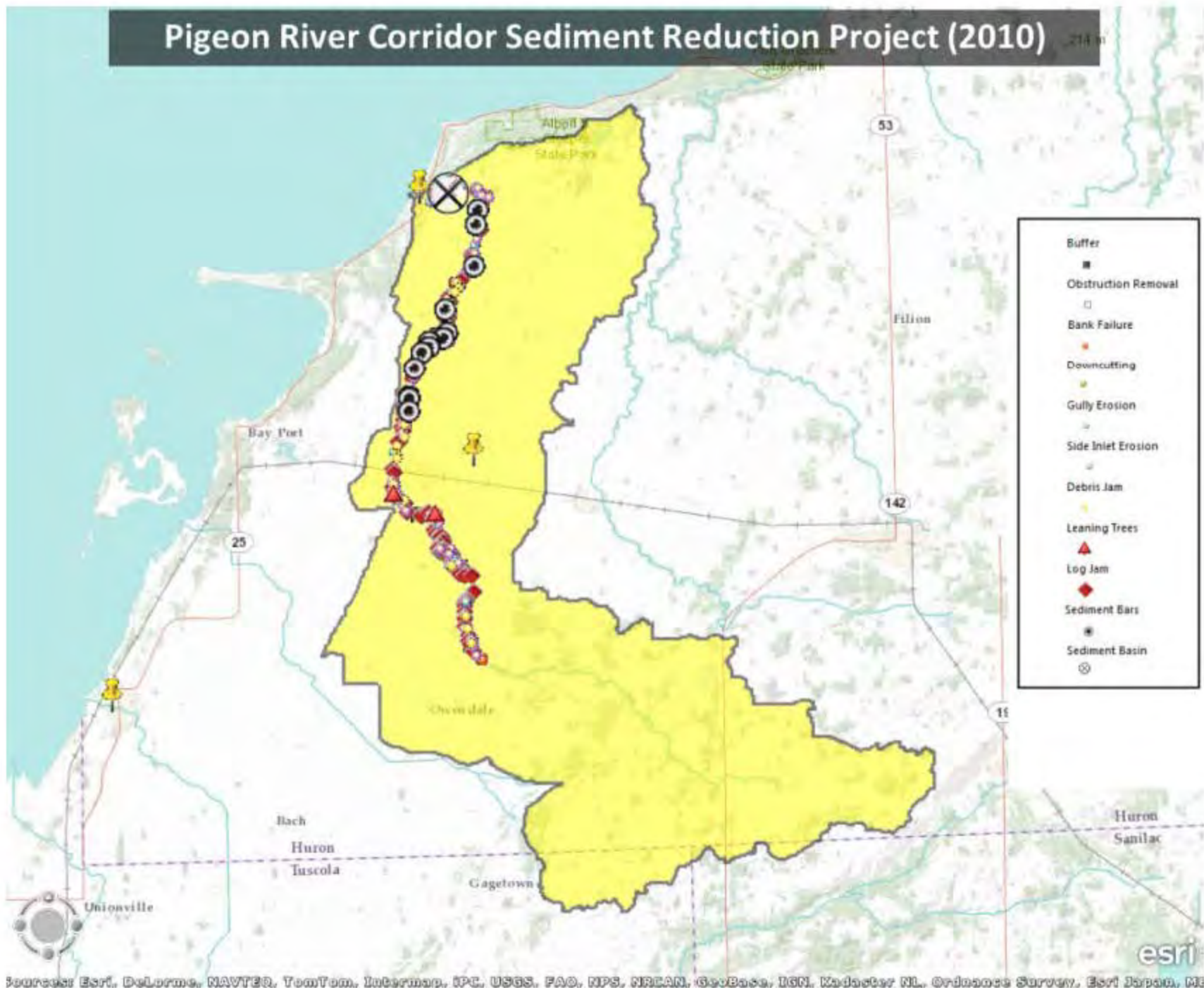
Monitoring Study Types





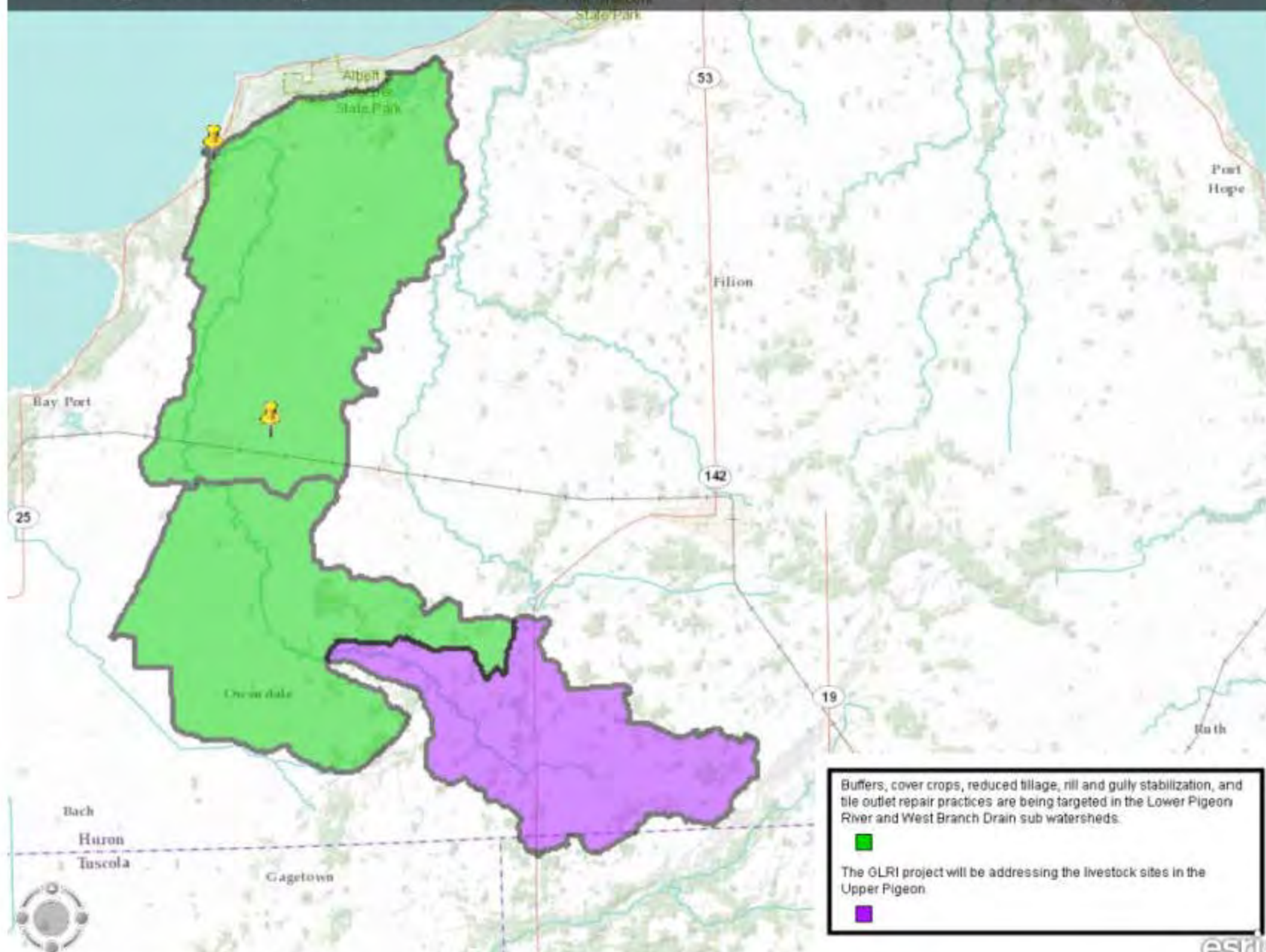
Source: Esri, DeLorme, NAVTEQ, TomTom, Intermap, iPC, USGS, FAO, NPS, NRCAN, GeoBase, IGN, Kadaster NL, Ordnance Survey, Esri Japan, ME

Pigeon River Corridor Sediment Reduction Project (2010)



Source: Esri, DeLorme, NAVTEQ, TomTom, Intermap, iPC, USGS, FAO, NPS, NRCAN, GeoBase, IGN, Kadaster NL, Ordnance Survey, Esri Japan, ME

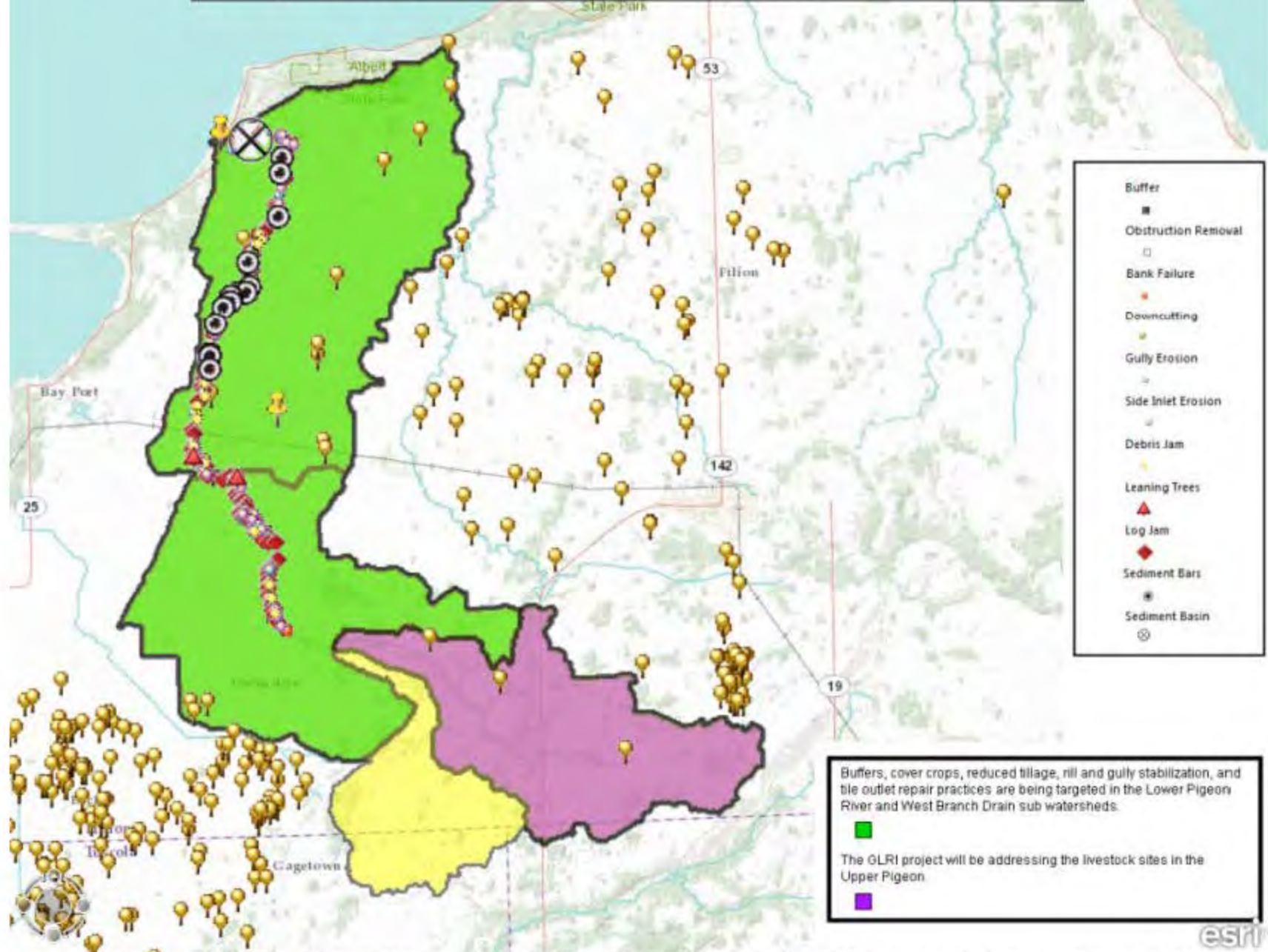
Targeted Phosphorus Reduction in the Pigeon River Watershed (2011)



Sources: Esri, DeLorme, NAVTEQ, TomTom, Intermap, iPC, USGS, FAO, NPS, NRCAN, GeoBase, IGN, Kadaster NL, Ordnance Survey, Esri Japan, MI



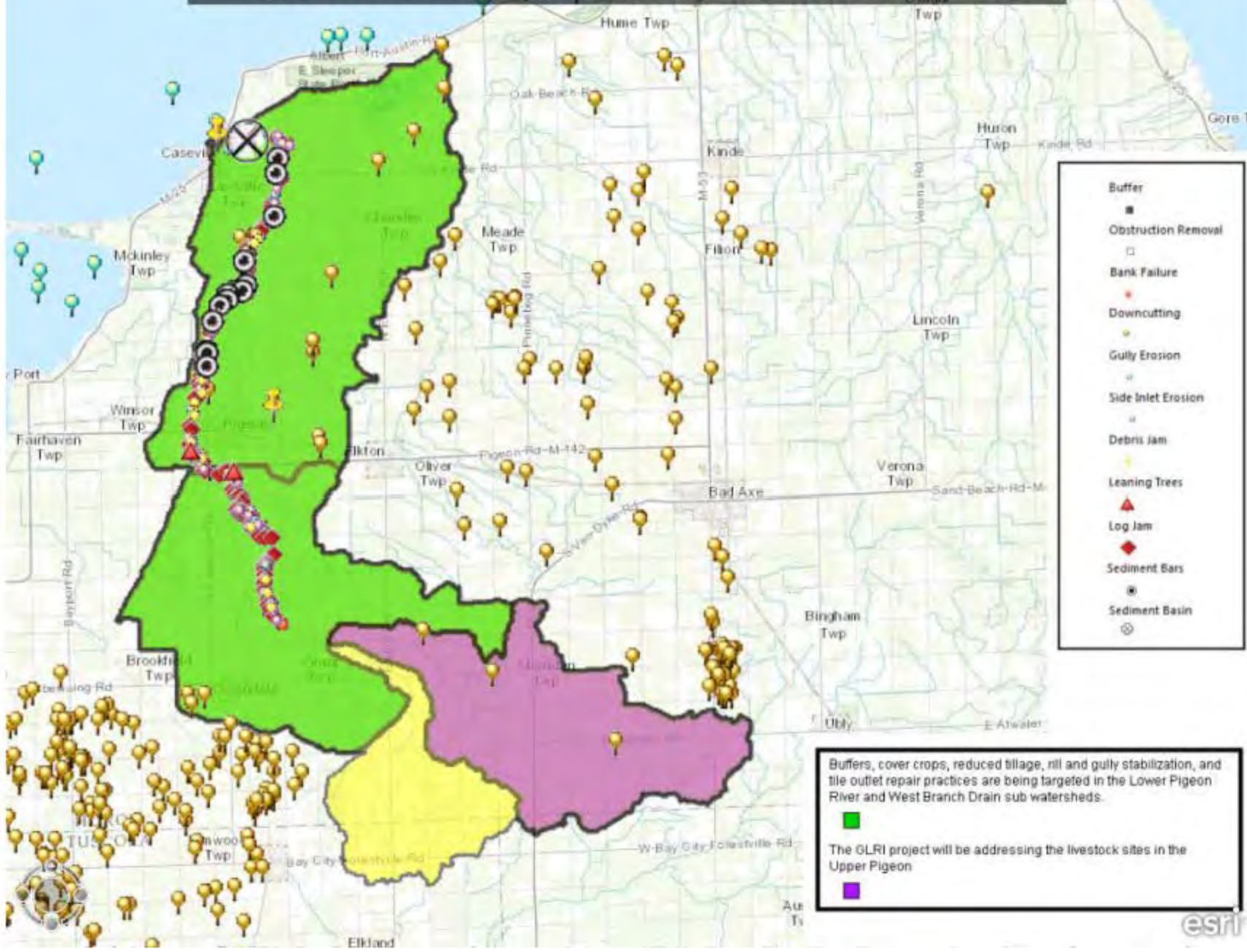
Pigeon River GLRI 2010 & 2011 with 319 Projects

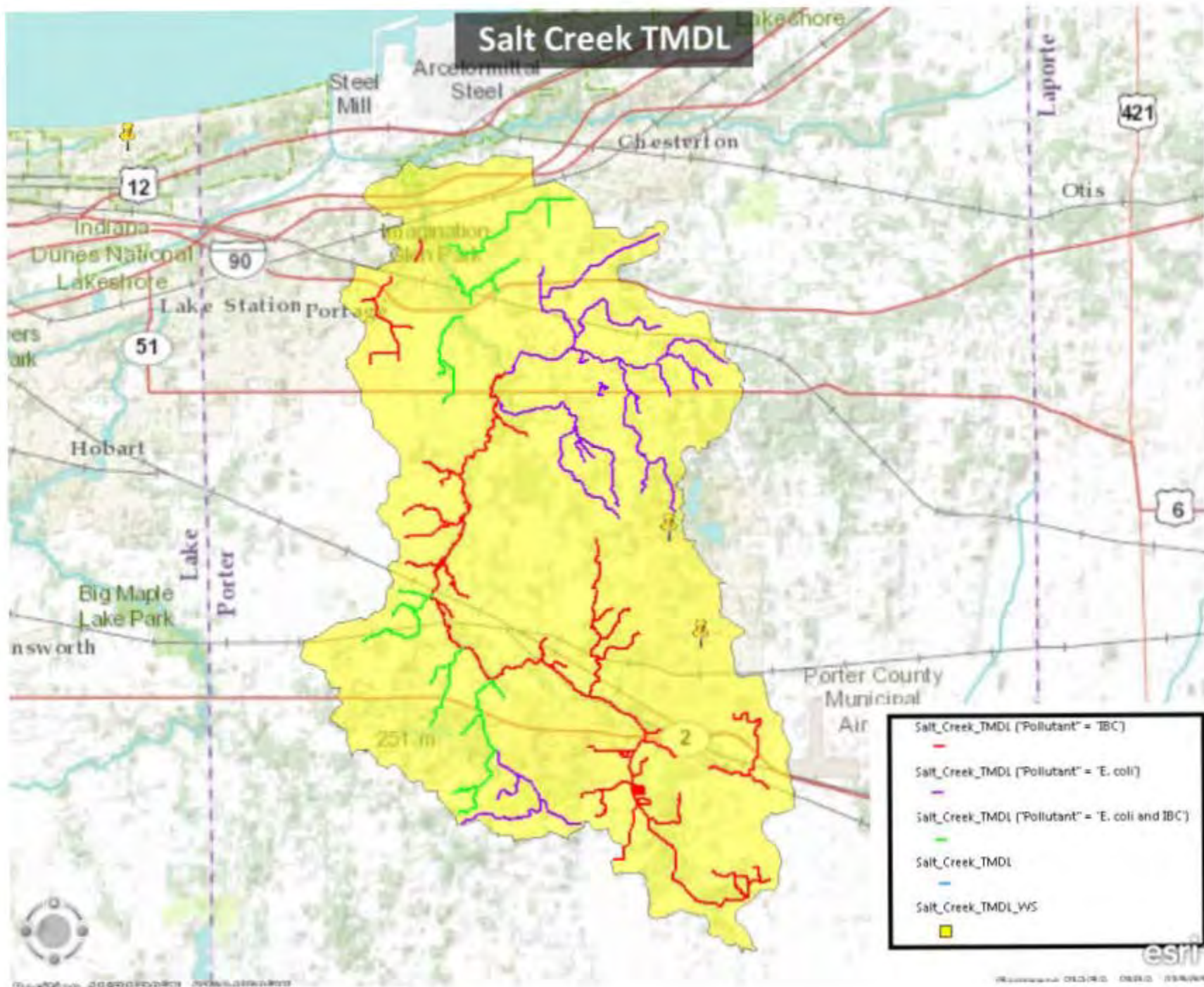


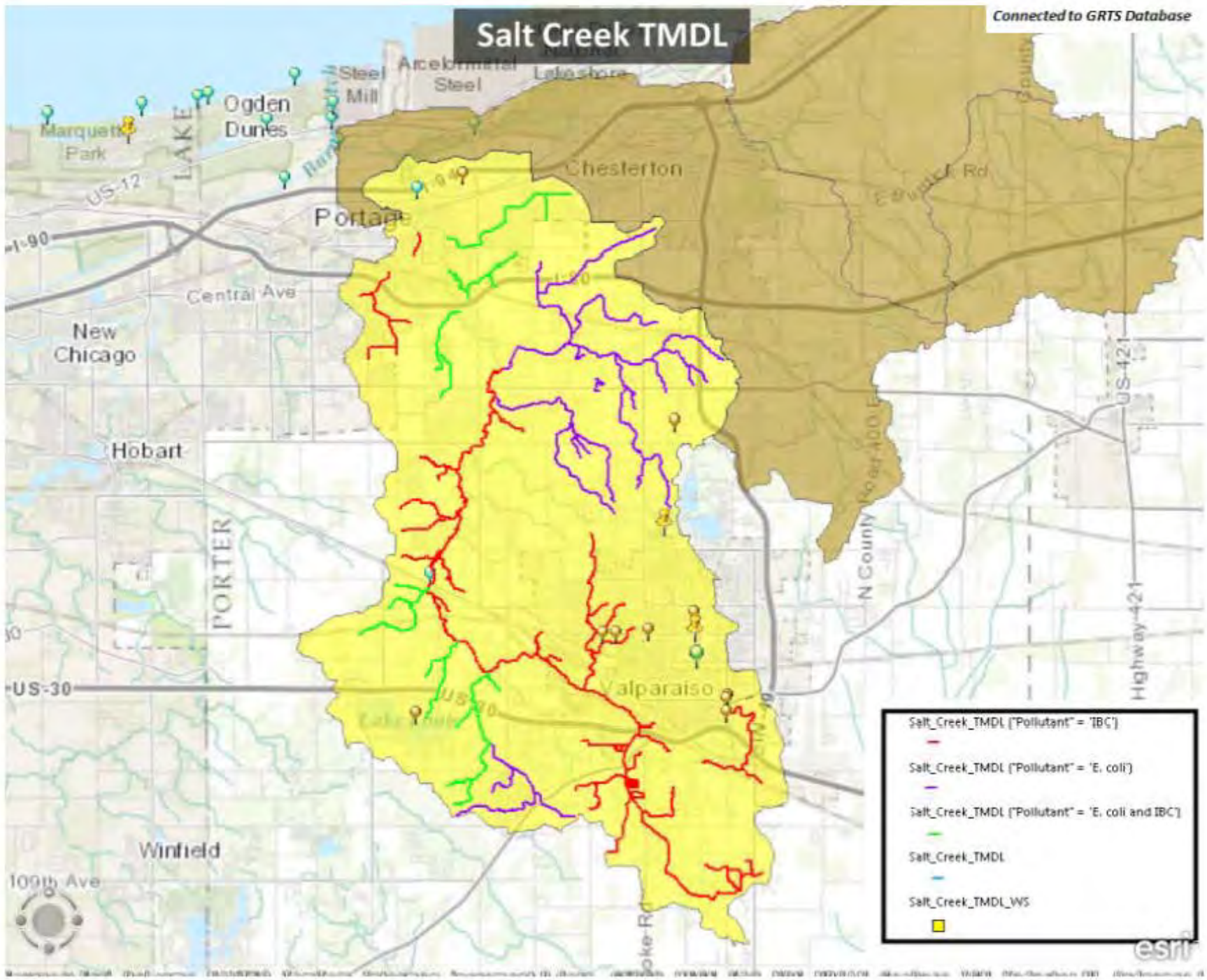
Sources: Esri, DeLorme, NAVTEQ, TomTom, Intermap, IPC, USGS, FAO, NPS, NRCAN, GeoBase, IGN, Kadaster NL, Ordnance Survey, Esri Japan, MI



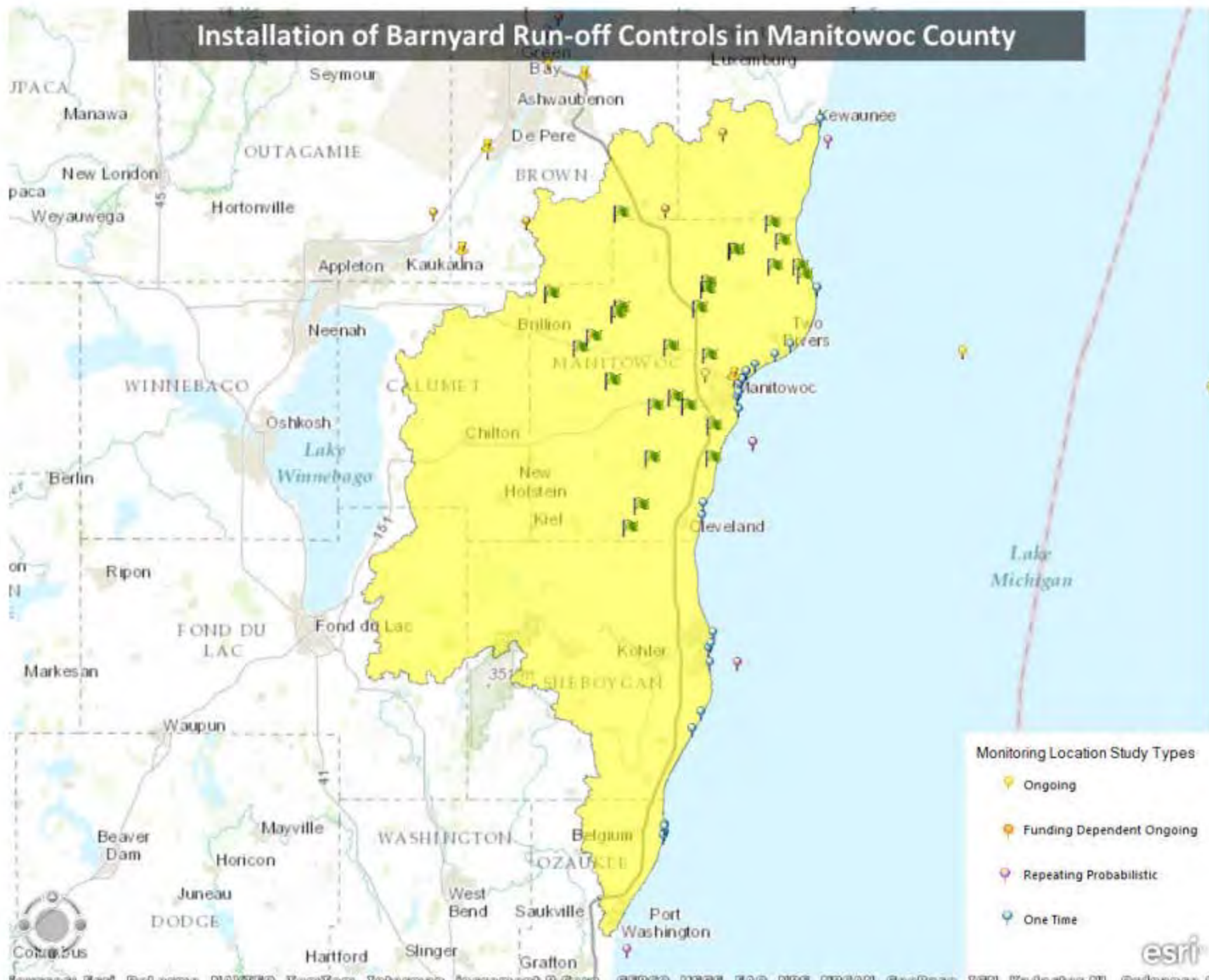
Pigeon River GLRI 2010 & 2011 with 319 Projects







Installation of Barnyard Run-off Controls in Manitowoc County



GLRI Project: Installation of Barnyard Run-off Controls in Manitowoc County: Beach closings and bacteria monitoring

Jonathan Burian and Andrea Bolks
April 20, 2012



esri

GLRI Project Description

- Decrease nutrient and bacteria loadings by installing runoff controls at indentified barnyards.

EPA Analysis

- Identify beach closings and bacteria monitoring near barnyard runoff control projects
- Data sources:
 - Bacteria data monitoring data compiled from STORET (US EPA) and NWIS (USGS)
 - Beach closings information submitted to US EPA from County Health Departments and WI DNR







Stations with active fecal or E. coli data monitoring



Position 43°22'15"S 86°21'23"E



Source: NASA, NOAA, USGS

Status

- Identified the number of beach closings and contamination advisories for 2010 and 2011 for each beach in the subject area
- Compiled over 4,800 fecal and e coli monitoring results from STORET, 1989-2011
- Compiled over 2,600 fecal and e coli monitoring results from NWIS, 1974-2011



R5 Interactive GLRI NPS Map



Shortcut to
GLRI_Interactive_Explorer_Map.nmf

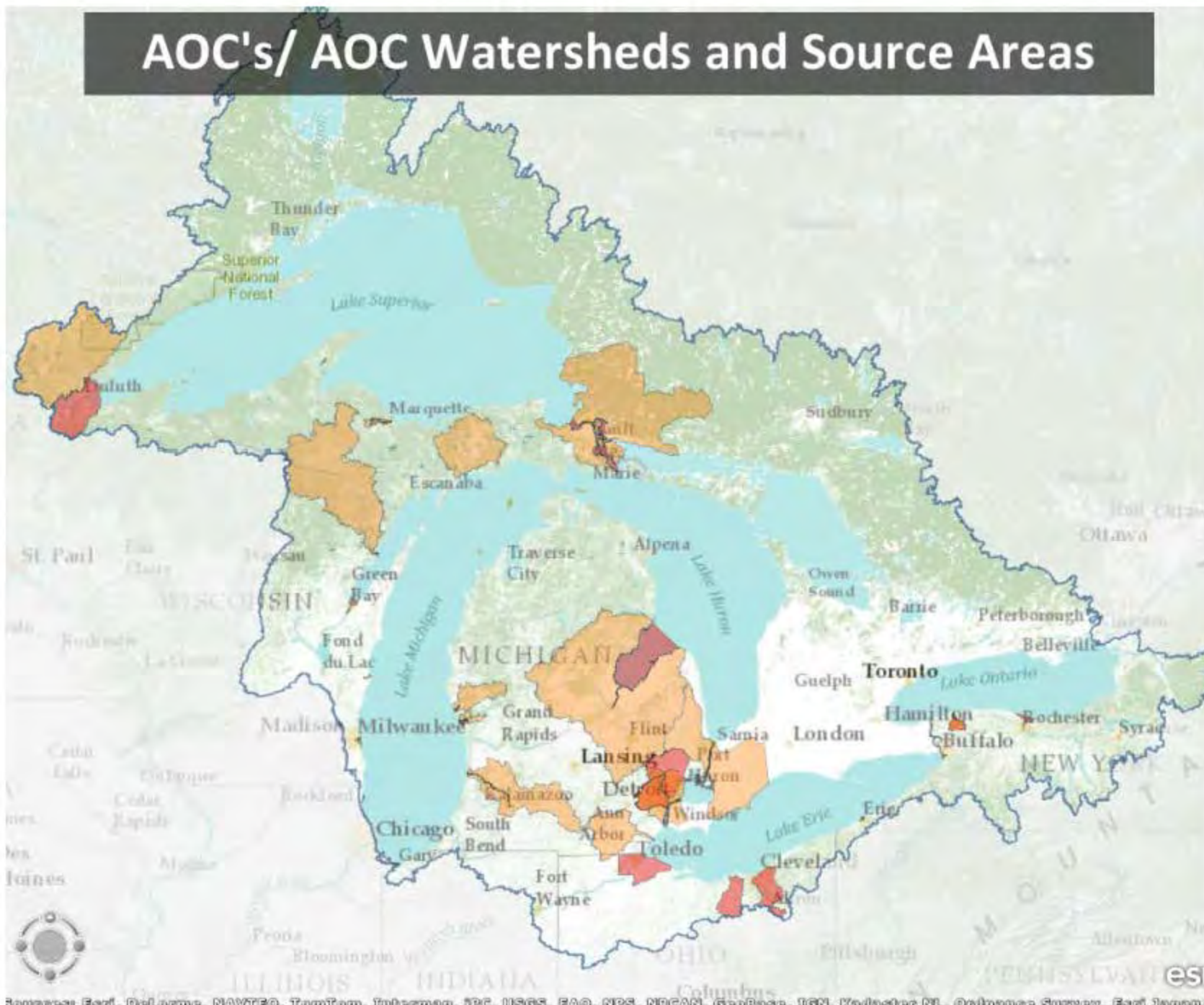
Andrea Bolks, US-EPA
Region 5
Bolks.andrea@epa.gov



Source: USGS
Source: NASA, NGA, USGS

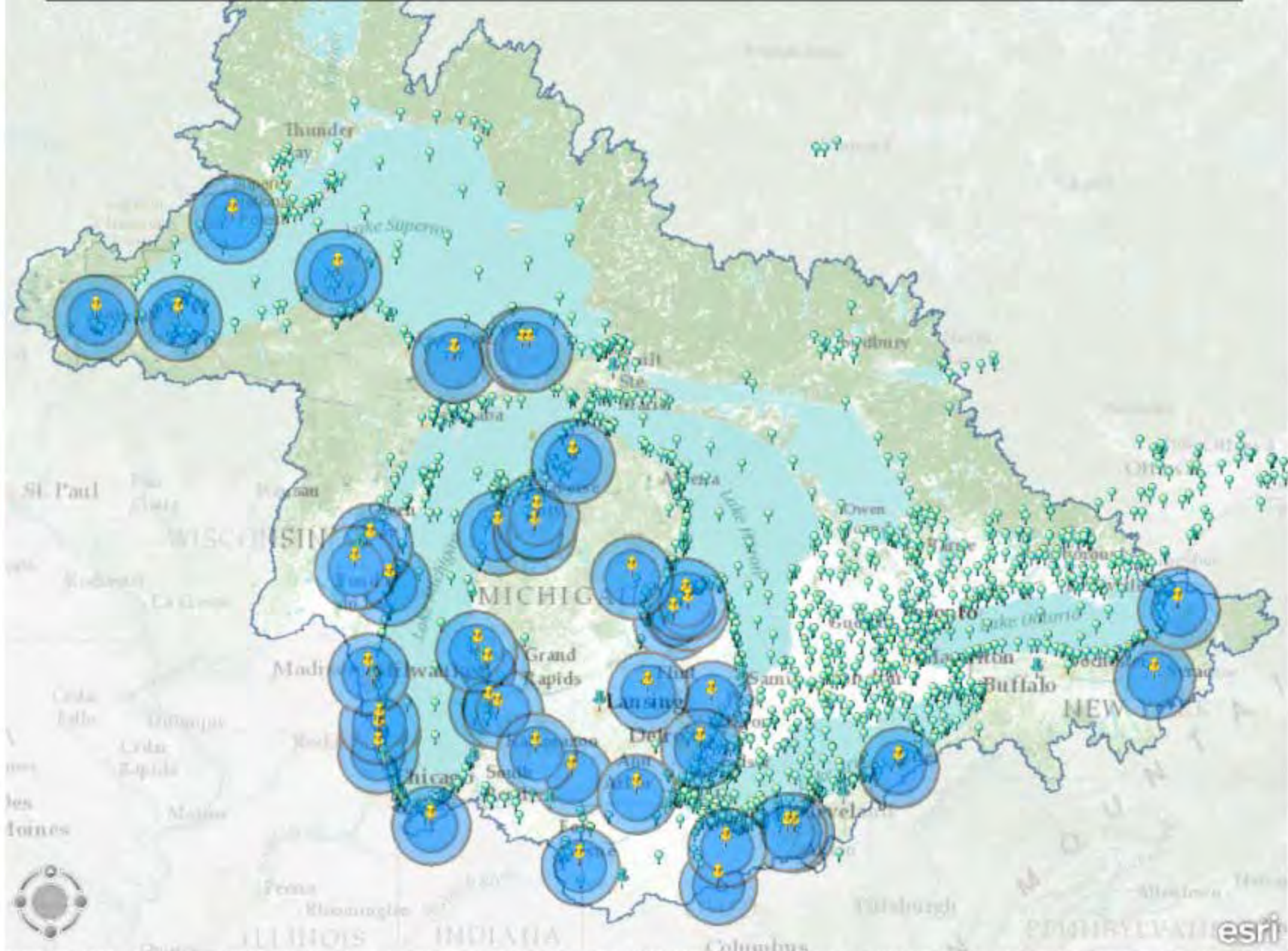


AOC's/ AOC Watersheds and Source Areas



Source: U.S. Environmental Protection Agency, Office of Research and Development, Great Lakes Science Center, Ann Arbor, Michigan. Data provided by the U.S. Environmental Protection Agency, Office of Research and Development, Great Lakes Science Center, Ann Arbor, Michigan.

20 Mile and 30 Mile proximity from GLRI Projects



Sources: Esri, DeLorme, NAVTEQ, TomTom, Intermap, IPC, USGS, FAO, NPS, NRCAN, GeoBasc, IGN, Kadaster NL, Ordnance Survey, Esri Japan, MI