

US EPA ARCHIVE DOCUMENT



UNIVERSITY OF WISCONSIN  
**PLATTEVILLE**  
PIONEER FARM

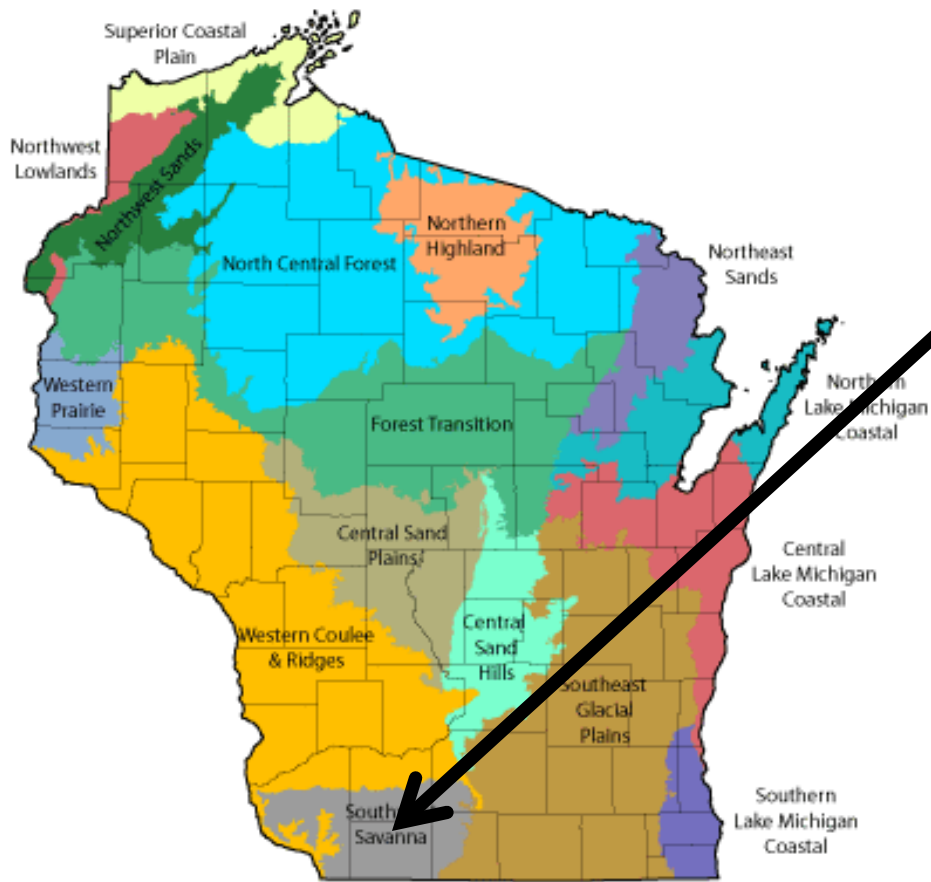
# University of Wisconsin-Platteville Pioneer Farm

Dennis Busch, UW-Platteville Pioneer Farm  
Agriculture Nutrient Workshop

# Presentation Outline



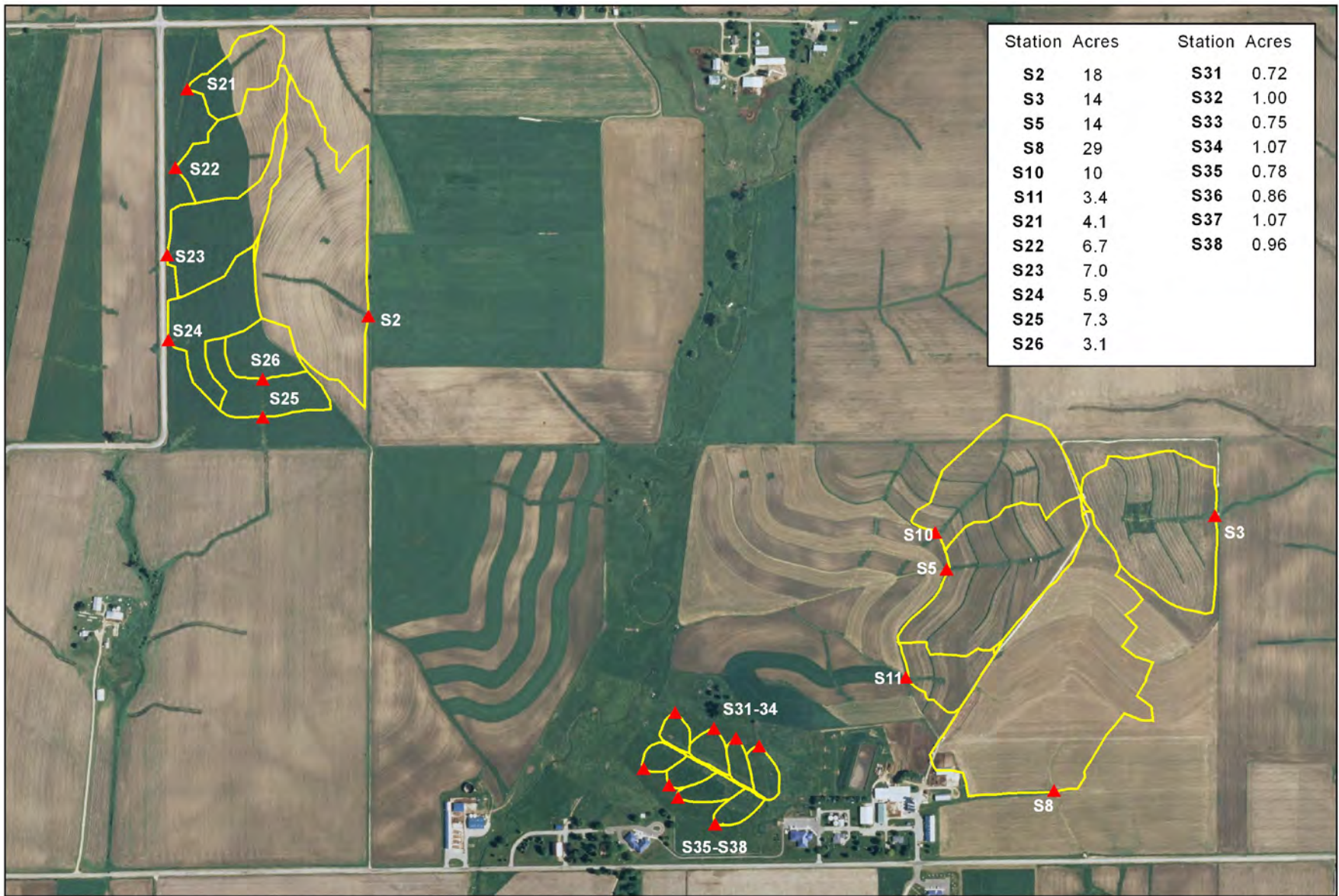
- Description of Pioneer Farm
- Paired-Basin Research
- Groundwater Monitoring
- Alternative Monitoring Methods
- Collaborative Efforts



UW-P  
PIONEER FARM



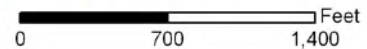
UNIVERSITY OF WISCONSIN  
**PLATTEVILLE**  
PIONEER FARM



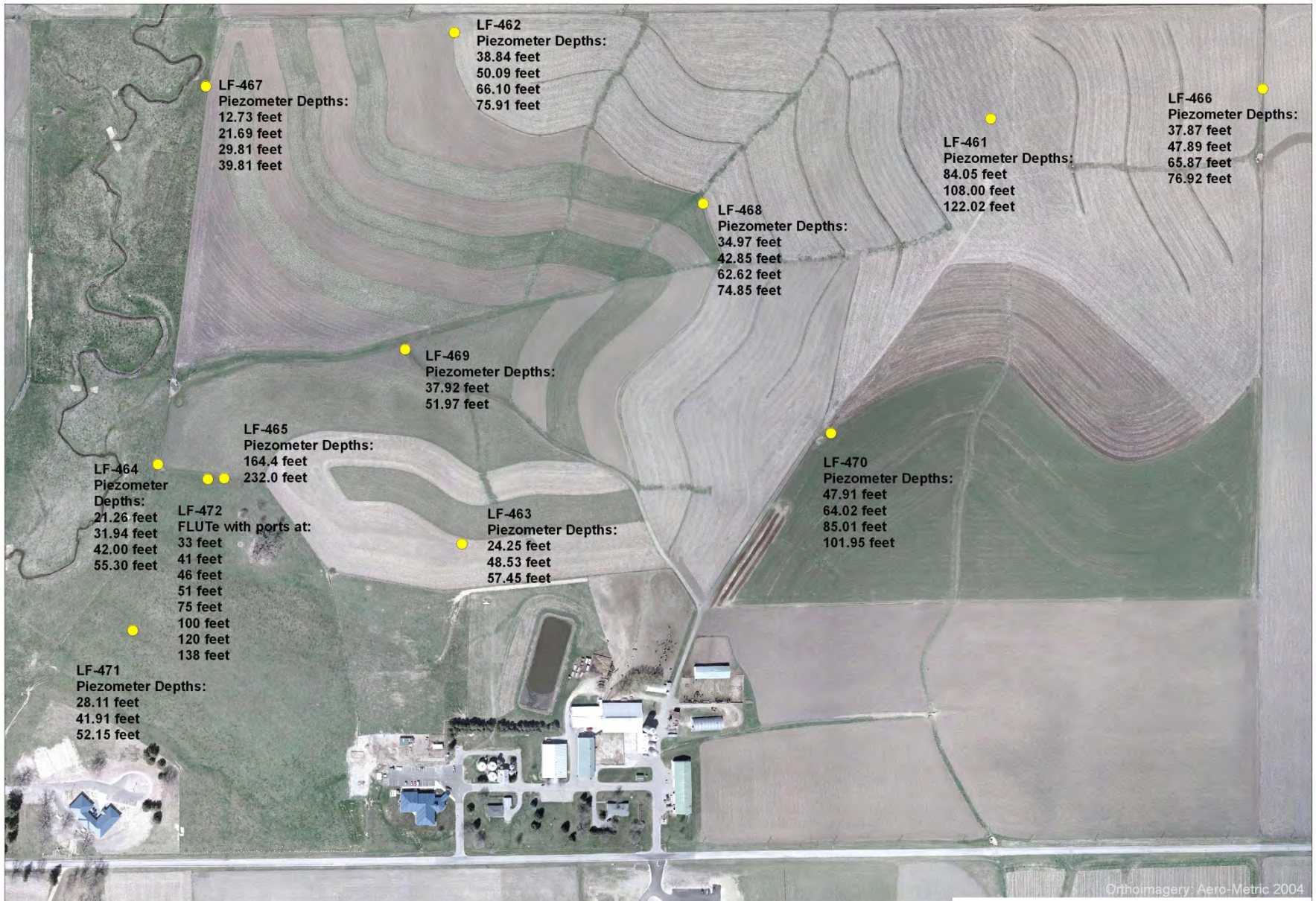
UNIVERSITY OF WISCONSIN  
**PLATTEVILLE**  
 PIONEER FARM

## Runoff Infrastructure

- ▲ Runoff Monitoring Stations
- Drainage Basin Boundaries



Cartography: Randy Mentz  
 April 18, 2011



# Groundwater Monitoring Project



# Alternative Sampling Methods

- PF & UWP Engineering Depts.
- Multiple Types of Gauges
  - ▣ Ephemeral Surface-Water Runoff (passive/automated)
  - ▣ Perennial Streams
  - ▣ Vadose Zone Leachate (USDA/ARS)
- Reduce Equipment Costs
- Reduce Operational Costs
- Improve Performance



# Collaborative Efforts

- Pioneer Farm/Discovery Farms Joint Steering Committee
  - Made up of Producers and Industry Professionals
  - 14 Organizations are included
  - Ex-Officio Representatives from governmental agencies
  - Committee helps guide direction of research programs
  - 4 Sub-Committees: Research, Watersheds, Data, Multi-State
  - Members participate on PF Project Teams

# Collaborative Efforts (cont.)

- Great Lakes Region Edge-of-Field Surface-Water Runoff Monitoring Initiative
  - ▣ Grant Funded by: Great Lakes Regional Water Program
  - ▣ Partners: UW-Platteville, MN Dept. of Ag, U of MN, IA State Univ., USDA/ARS, TNC, Sand County Foundation, Trout Unlimited, IA Soybean Assoc.,
  - ▣ Goals: improve collaboration, develop recommendations for standard methods, develop and offer training program.

# Collaborative Efforts (Cont.)

- NRCS – Conservation Innovation Grant
  - Goals are to Demonstrate, Promote, and Field-Test a Low-Cost Automated Gauge for Monitoring Ephemeral SW Runoff.
  - Pilot program will include a total 24 gauging stations located throughout Wisconsin, Minnesota and Iowa
  - Collaborators Include: UW-Platteville, MN Dept. of Ag, USDA-ARS, TNC, Fillmore SWCD, Goodhue County SWCD, Cannon River Watershed Partnership, Hewitt Creek Watershed Improvement Assoc., IA Soybean Assoc.,

# Why Collaborate?

---

- Pooled Resources
- “Stacking” Projects
- Specialization of Labor
- Unique Perspectives on Issues
- More Competitive

# Questions?

