

US EPA ARCHIVE DOCUMENT

# Partnership for Sustainable Communities

## Lacoochee, FL HUD Signature Community



-Population: **2,500**

-Area: **2.5 square miles**

-Unemployment rate: **71%**

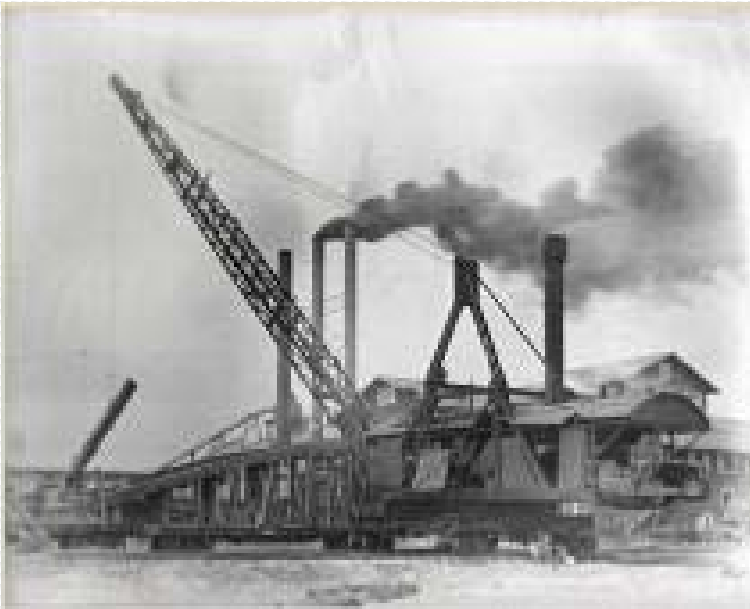
-Subsidized school lunch: **98%**

- Renters: **88%**

## Partnership for Sustainable Communities

# Lacoochee, FL ORIGINS

**CUMMER SAWMILL, circa 1923**



**Factory town with economic boom from 1922-1959**



## Partnership for Sustainable Communities

# Lacoochee, FL ECONOMIC DECLINE

- 1960-1964 - Lacoochee Industrial Park's Wood Mosaic Corporation in business
- 1971 - Grain mill operated for brief period
- Currently leased by CSX Railroad (with rail spur) for material storage



Partnership for Sustainable Communities

# Lacoochee, FL

## CURRENT HOUSING STOCK



## Partnership for Sustainable Communities

# Lacoochee, FL LOCAL CHURCH



Partnership for Sustainable Communities

# Lacoochee, FL POST-RENOVATION SCHOOL



## Partnership for Sustainable Communities

# Lacoochee, FL

## UNMET NEEDS / CHALLENGES

➔ WATER / SEWER CONSTRUCTION

➔ PAVED ROADS

➔ AFFORDABLE HOUSING

➔ FLOODING MITIGATION

➔ HOUSING REPLACEMENT

➔ COMMUNITY CENTER

➔ LARGE LOCAL EMPLOYER

➔ SMALL BUSINESS DEVELOPMENT

➔ MICRO-LOAN PROGRAM

➔ NEIGHBORHOOD HEALTHCARE

➔ PUBLIC TRANSPORTATION

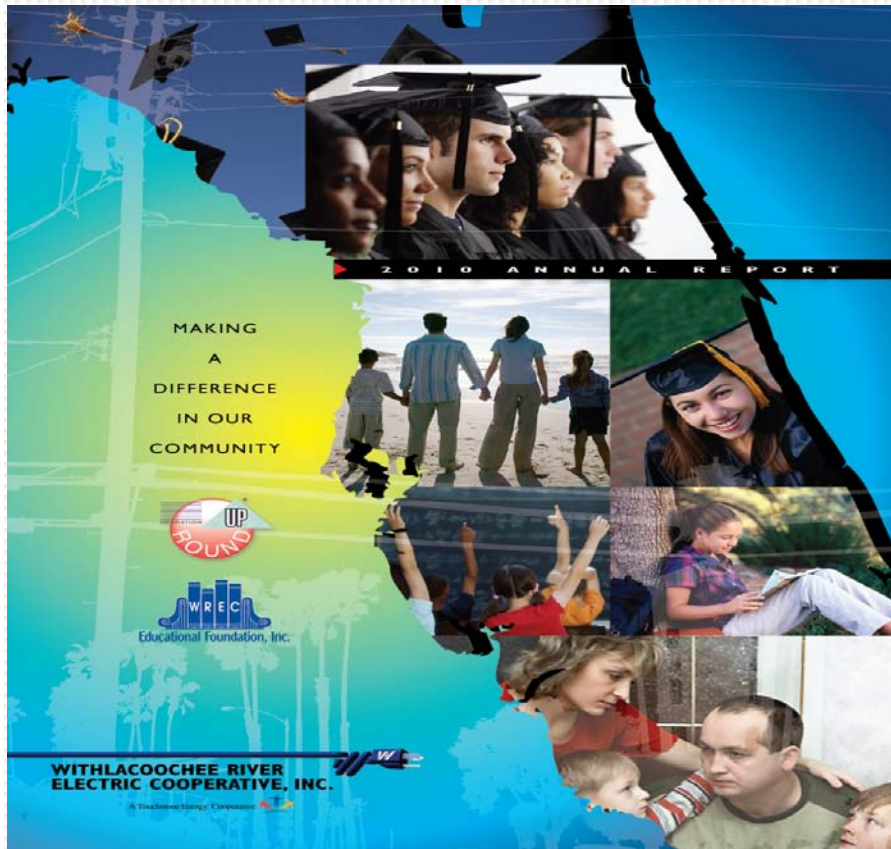
➔ JOB TRAINING



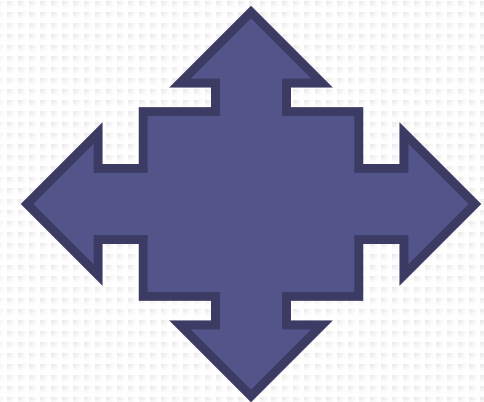
# Partnership for Sustainable Communities

## Lacoochee, FL

### UNIQUE PRIVATE PARTNER AS DRIVING FORCE



WITHLACOOCHEE  
RIVER ELECTRIC  
COOPERATIVE



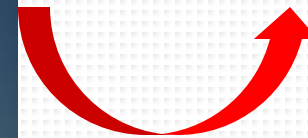
# Partnership for Sustainable Communities

## Lacoochee, FL

### 2008 – 2011 ACHIEVEMENTS



**FAILURE WAS  
NOT AN  
OPTION!**



## Partnership for Sustainable Communities

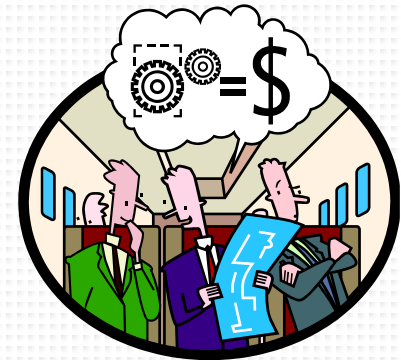
# Lacoochee, FL

## 2008

### HUD CONSULTATIONS

#### FEDERAL ROLE INCORPORATED –

- \* EDUCATION (two-way)
- \* CONSULTATIONS on MANY TOPICS
- \* TECHNICAL ASSISTANCE
- \* FACILITATION OF SESSIONS & COMMUNICATION
- \* MEDIATION BETWEEN PUBLIC/PRIVATE PARTNERS
- \* NOTIFICATION OF AVAILABLE FUNDING
- \* “OUTSIDER” VIEW OF POTENTIAL SOLUTIONS
- \* REINFORCEMENT OF POSITIVE GOALS & ACTIONS





Partnership for Sustainable Communities

Lacoochee, FL

**2010 FIRST PUBLIC / PRIVATE / GOVERNMENT  
BRAINSTORMING SESSION**



WITHLACOOCHEE RIVER ELECTRIC COOPERATIVE, INC.  
CORPORATE OFFICE (352) 567-5133





## Partnership for Sustainable Communities

### Lacoochee, FL

# 2011 FEDERAL AGENCY RE-VISIONING DAY with SENATOR BILL NELSON (D-FL)



## Partnership for Sustainable Communities

# Lacoochee, FL FEDERAL PARTNERS



- \*Community Development Block Grants
- \*Section 108 Loan Amendment
- \*HOME Program



- \*Community Facilities Loan & Grant Application



- \*Brownfields Assessment Grant