

US EPA ARCHIVE DOCUMENT

Region 4 Virtual Forum on the Partnership for Sustainable Communities

October 26, 2011

Partnership for Sustainable Communities



Kentucky Example

Krista Mills, HUD – Louisville Field Office

Bernadette Dupont, DOT – FHWA- KY

October 26, 2011

Background

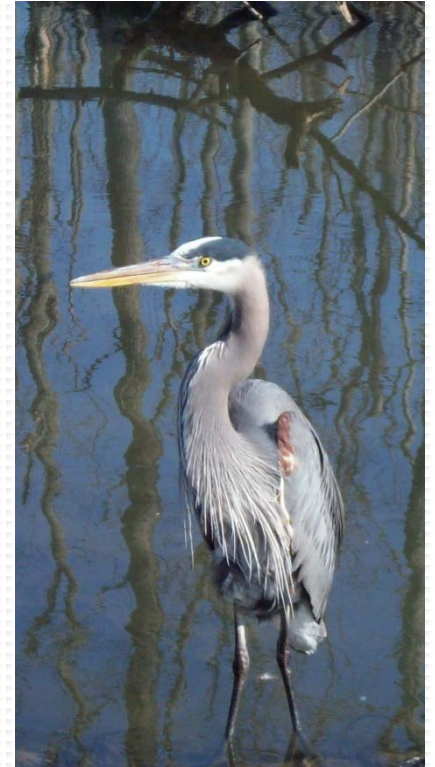
- Fern Creek is in the Floyd's Fork watershed
- Floyd's Fork represents 17 miles of the 100 mile planned Louisville Bike/Ped Loop.
- Developers see growth (\$) opportunities





Background

- A new shopping center is planned for Fern Creek area
- Locals want help to prevent urban sprawl and preserve scenic, wildlife areas
- City of Louisville wanted “Smart Growth” and they needed a Suburban Retrofit Toolbox to address development by right



Background

- EPA Smart Growth Implementation Assistance Award (SGIA) started in 2005

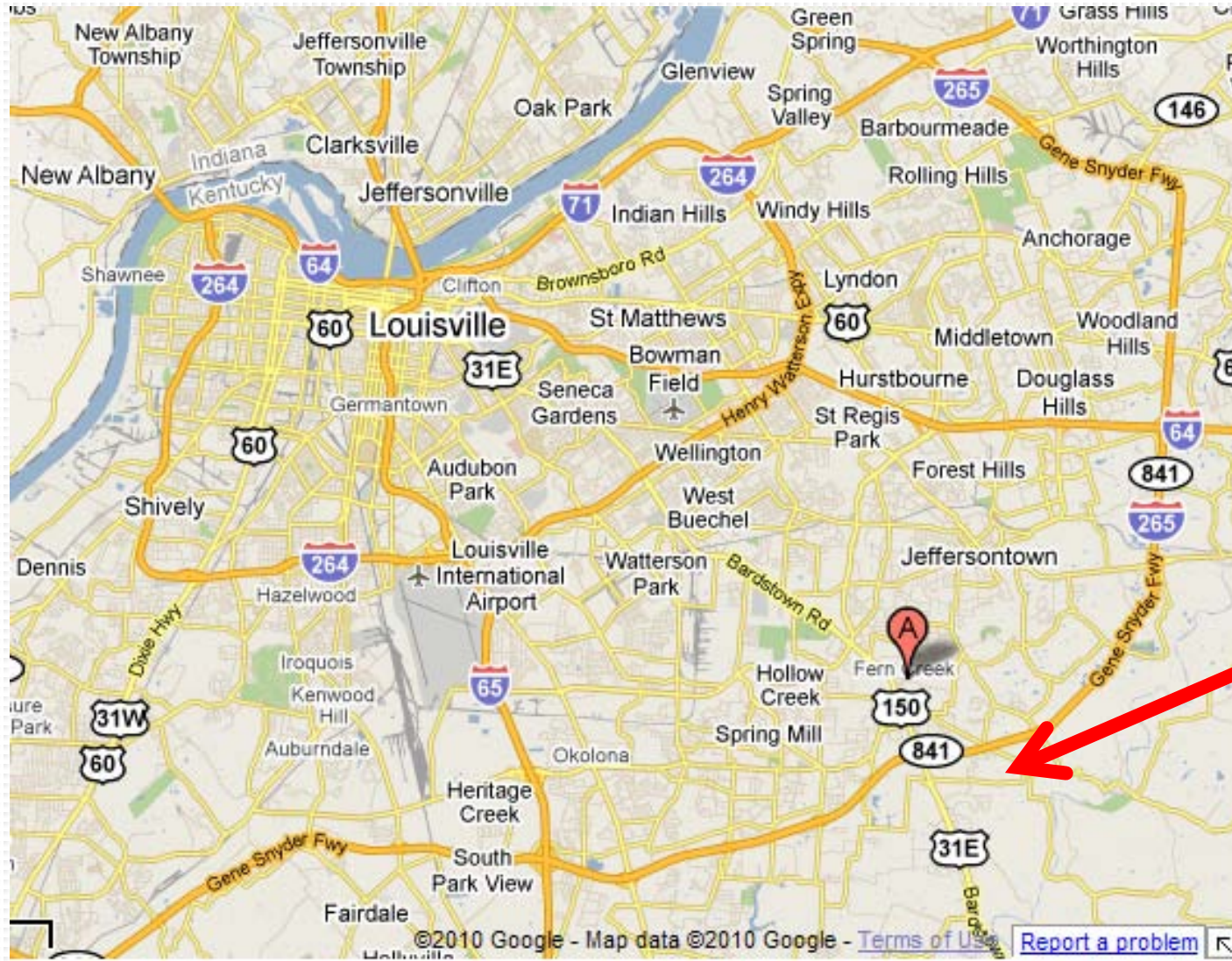


- Louisville Metro received award prior to HUD/EPA/DOT Partnership

- Became one of the 1st HUD/DOT/EPA Partnership projects!!!
(2009)

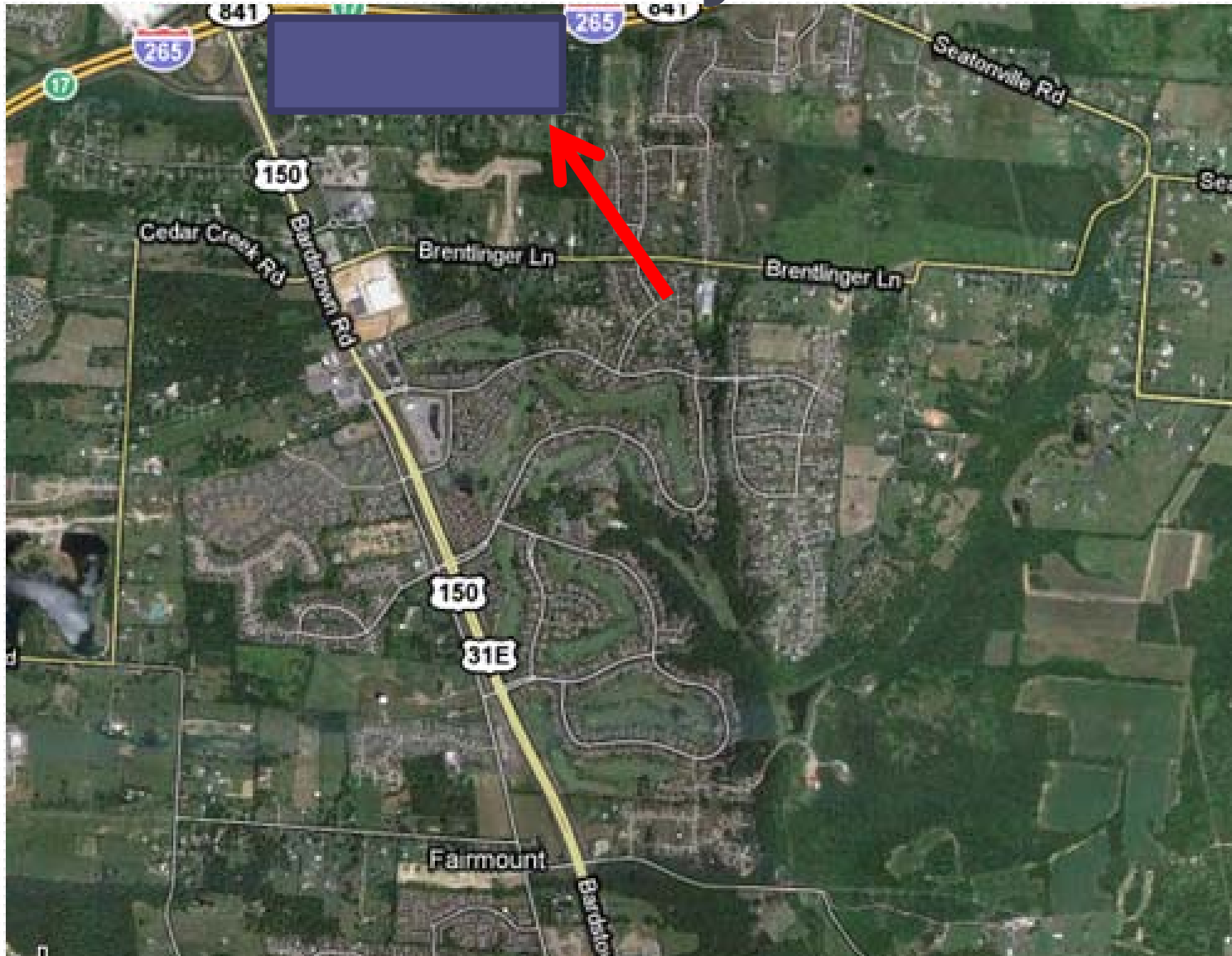


Fern Creek – Study Area



Study Area

Fern Creek – Study Area



Challenges

- Social Equity
- Fair Housing
- Overcoming N.I.M.B.Y



Sustainable Communities Design Workshop

- 3-day Educational Forum
- October 19-21, 2010
- Consisted Of:
 - **Formal presentations**
 - **Group discussions**
 - design, transportation, housing, neighborhoods, environment, open space, economic development, and land use
 - **Open design studios**
 - University of Kentucky Design School



Workshop Step 1: **Accept Change**

Accept That Change Will Happen

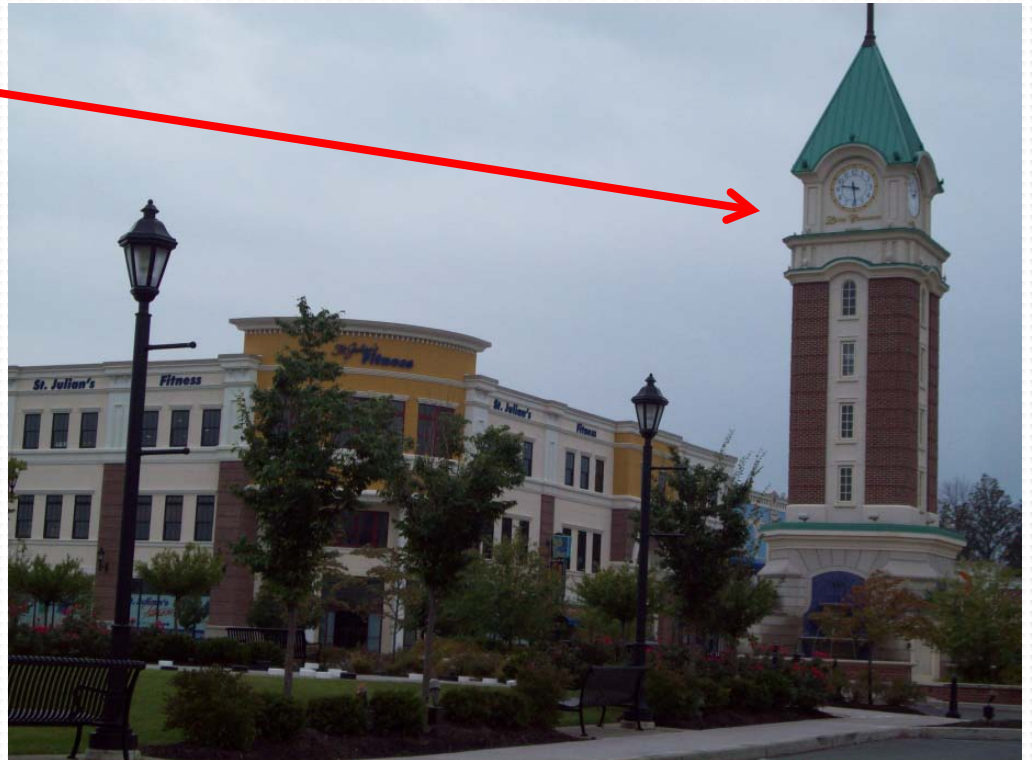
– But Help Decide **HOW It Will Change**



Workshop Step 2.

Identify Sustainable CENTER

- Heart of the Community
- Focal Point
- Meeting Place



Workshop Step 3. Identify Growth Boundaries and Preservation Corridors



Workshop Step 4.

Use the Tools Available

- **Complete Streets**
 - Eases Congestion
 - Accommodate all users
 - motorists/transit/bicyclists/pedestrians
- **Road Diets**
- **Access Management**
- **High Connectivity**
 - Means less lanes
- **Apply Smart Growth Principles**

Lessons Learned:

- What Each Agency Does
- What Programs Each Agency Has
- How We Can Work Together

