

US EPA ARCHIVE DOCUMENT

## EPA Region 10 Dive Team Lake Union Sunken Vessel Survey, Seattle, WA

**What:** The Region 10 dive team was asked to conduct surveys of sunken vessels in Lake Union, Seattle Washington. The dives were training for the team, but produced valuable survey data for the Center for Wooden Boats, the City of Seattle, and the State of Washington Department of Natural Resources.

**Why:** This information will be used by a variety of entities for archaeological and Gasworks Park site cleanup purposes. Though these vessels have long been on the bottom of Lake Union, the EPA Region 10 dive unit used this dive as a training opportunity for scuttled vessel work often conducted to determine the nature and extent of hazmat contamination in sunken vessels.

**Where:** The vessels surveyed were at Lake Union's north (near Gasworks Park) and east ends, as well as in Portage Bay.

**When:** January 2010 and 2011.

**How:** Divers were given priority targets to survey from the Center for Wooden Boats. These targets were located while on site with [EPA's ROV](#) and on board sidescan sonar. Once the ROV found the targets in question, divers carefully submerged to take photos of the vessel before silt was stirred up on the bottom. Measurements were then taken of vessel dimensions, and other notes made onto the video tape. Due to contamination present on the bottom of Lake Union, and the possibility of bacteria from stormwater runoff in the water column, divers were kept totally dry and were subjected to potable water decontamination after each dive.

**Equipment:** EPA vessel Monitor was used as the dive platform, with the vessel Wooldive conducting ROV work.

**Results:** Photos, video, and narrative descriptions were conveyed the Center for Wooden Boats, City, and State.

**More details:** [Center for Wooden Boats](#)

**Contact information:** Rob Rau, (206) 553-6285, [rau.rob@epa.gov](mailto:rau.rob@epa.gov)

**Photos:**

Photo of diver Rob Rau measuring the beam and length of a sunken vessel, and relaying the information via wireless communication.



ROV accompanying the diver and obtaining video footage of the wreck.



Photo of a portion of a sunken vessel with a porthole open at the center of the photo.





Diver inspecting a drum discarded near Gasworks park.



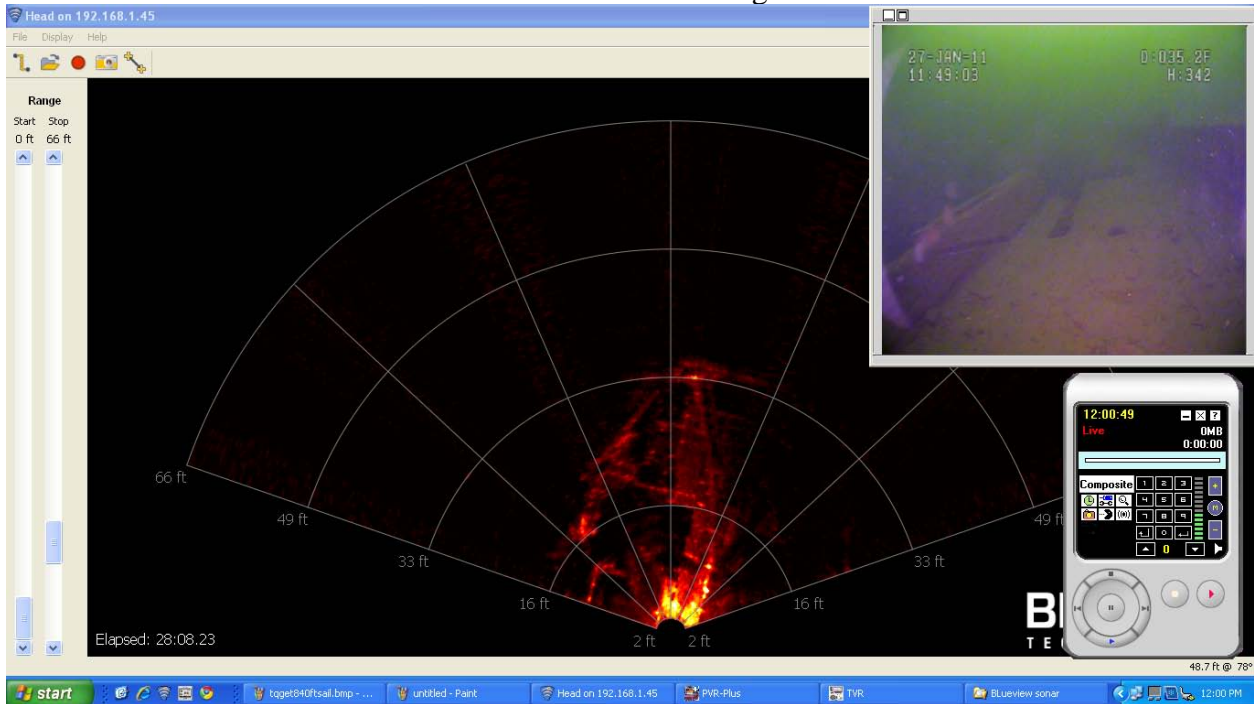
Diver measuring large tractor tires discarded near Gasworks park.



Dive platform USEPA Monitor used for the dive survey.



Screen shot of the live video feed and sidescan sonar footage of a vessel located with the ROV.





Diver Rob Pedersen preparing to descend and capture high definition video of sunken wrecks.

