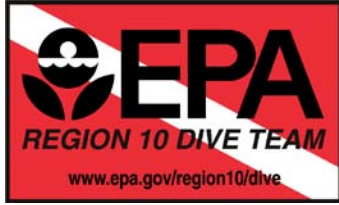


US EPA ARCHIVE DOCUMENT



## [EPA Region 10 Dive Team](http://www.epa.gov/region10/dive)

### **Jackson Park Superfund Site Diver Habitat Survey, Silverdale, WA, January 2008**

**What:** The EPA Region 10 Dive Team conducted a habitat survey within the Jackson Park Superfund Site, located in Ostrich Bay. The Jackson Park Housing Complex Superfund Site was a former Navy Ammunition Depot operated from 1904 to 1959 which stored, processed, and disposed of ordnance. Ordnance was lost or discarded in Ostrich Bay during site operations. Also, waste waters from these operations were drained directly to Ostrich Bay.

**Why:** A habitat survey was needed to more specifically tailor the Superfund risk assessment process, assessing contaminants that have come to be located in Ostrich Bay, to species actually residing in the site, as well as species this habitat might support in the future. Discarded ordnance that was not covered by ongoing sediment accretion at the site was to be located for later removal.

**Where:** Jackson Park Superfund Site, Ostrich Bay, near Silverdale, WA.

**When:** Dive surveys took place on January 22 through 25, 2008.

**How:** Diver investigations included 4 days of diving along pre-planned transects with a towed GPS raft to georeference photos taken of the seafloor.

**Results:** Habitat was successfully surveyed with approximately 3-4 miles of transects. One suspected ordnance item was found. The near-shore benthic portions of the surveyed areas in Ostrich Bay consisted of sandy-silt with numerous bivalve shells on the surface. The deeper areas (almost a uniform depth across the central portion of a given transect, 25'-35') consisted of a soft, silty bottom with few shells on the surface. Although siphon holes were few, bivalve predators - seastars were common. Sea pens were in the deeper sections and sea cucumbers were scattered throughout except in the most shallow areas. Georeferenced photos, maps, and video were provided to the project manager.

**More Details:** [Jackson Park Housing Complex Superfund Site website](#).

**Contact:** Rob Pedersen (206) 553-1646, [Pedersen.rob@epa.gov](mailto:Pedersen.rob@epa.gov)

Photos:



Suspected decaying ordnance.



Giant plumose anemone, *Metridium senile*, found on most transects where a solid hold was present.



Many nudibranchs such as this one (*Tritonia diomedea*) were found on each transect.



Razor clam; found on some transects.

Ostrich Bay

DSC00699



N 47° 35.022' W 122° 41.102'

01/24/2008 10:53:55 AM

Submerged mooring ball(?) with tube worms growing on it.

Ostrich Bay

DSC00840



N 47° 35.418' W 122° 41.140'

01/25/2008 10:14:52 AM

Starry flounder, *Platichthys stellatus* found on all transects.



Sea cucumber *Parastichopus californicus* and white sea pen *Vigularia*, and the burrowing anemone *Pachycerianthus fimbriatus*—found intermittently on all transects. The latter portion of Transect 17 had a sizable bed of the sea pen *Ptilosarcus gurneyi*.



Bivalve shells, found nearshore on either side of Ostrich Bay on each transect. The common clam predators were *Pisaster brevispinus* and *Pycnopodia helianthoides*.

Ostrich Bay

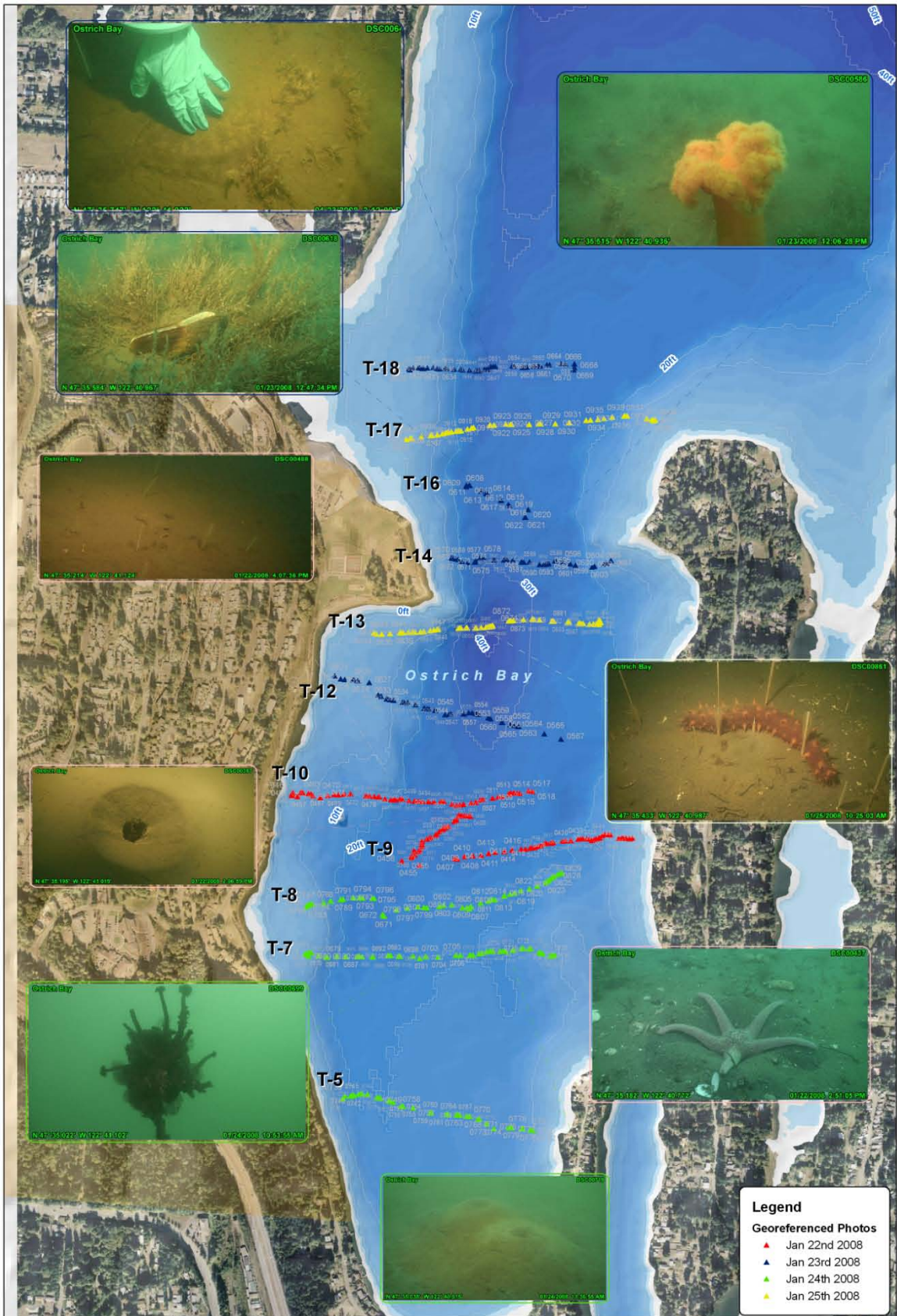
DSC00908



N 47° 35.663' W 122° 41.104'

01/25/2008 11:36:08 AM

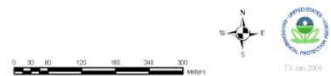
Moon snail *Polinices leweisii* - found on most transects.



The U.S. Environmental Protection Agency (EPA) has compiled this complete representation from data or information sources that may not have been verified by the EPA. This data is offered here as a general representation only, and is not to be used without verification by an independent professional qualified to verify such data or information. The EPA does not guarantee the accuracy, completeness, or timeliness of the information shown, and shall not be liable for any loss or injury resulting from reliance upon the information shown.

**Highlighted Photos: Ostrich Bay  
US EPA Region 10 Dive Team  
Jan 22-25 2008**

Offshore from Jackson Park Housing Complex (US Navy)





Return to [EPA Region 10 Dive Team](#) homepage.