

US EPA ARCHIVE DOCUMENT



## YOUR NATIONAL PARK

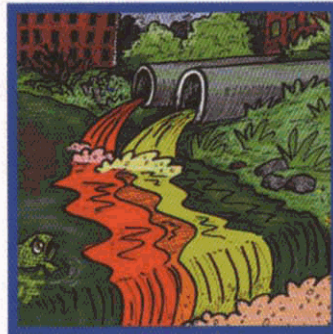
Not everyone lives in a National Park. You live in a special national park called the John H. Chafee Blackstone River Valley National Heritage Corridor. The National Heritage Corridor is made up of 24 cities and towns. They are all connected by the Blackstone River. The Blackstone River starts in Worcester, Massachusetts and travels 46 miles down to Providence, Rhode Island.



**BLACKSTONE RIVER  
WATERSHED**

## WHY IS OUR BLACKSTONE RIVER POLLUTED?

Historically, the Blackstone River was used by mills for power, fresh water, and for dumping waste. It has also suffered from illegal dumping of trash like tires, shopping carts, and other litter.



There are two sources of pollution:  
**POINT SOURCE AND NONPOINT SOURCE**

**Point Source Pollution** - discharge pipes draining directly to the river.

**Nonpoint Source Pollution** - rain, melting snow, and other moving water runs over land or through the ground. It picks up pollutants and takes them to our streams, rivers, and lakes, or to our groundwater.



For more information on how you can get involved please contact

**BLACKSTONE RIVER WATERSHED COUNCIL**  
PO BOX 8068 CUMBERLAND, RI 02864  
BRWATERSHEDCOUNCIL@YAHOO.COM  
401-334-5003

Despite the pollution that exists, the Blackstone River is cleaner today than it was 30 years ago. The Blackstone River needs your help to keep litter, trash, tires, and garbage off the banks and out of the water.

## YOU CAN HELP PREVENT POLLUTION OF OUR WATERSHED!

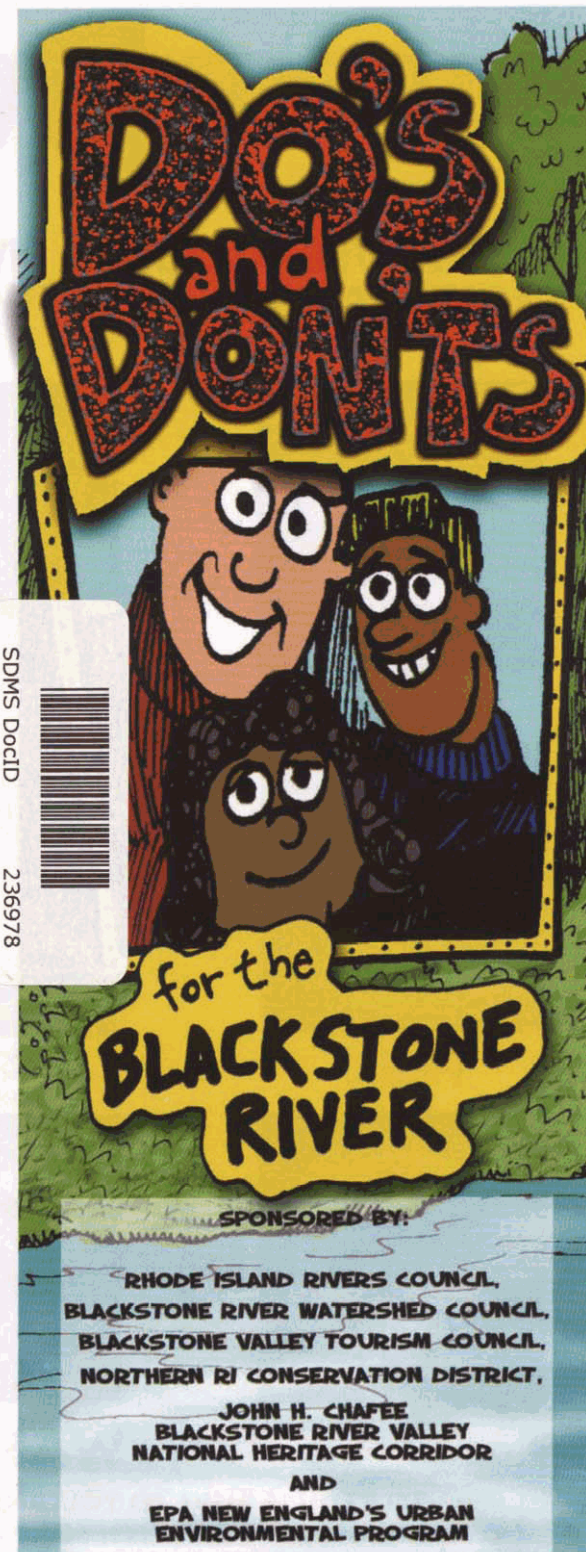
- \* Whenever you enjoy the river, take a trash bag to carry out any trash you carried in.
- \* Put trash in trash cans and remember to recycle.
- \* Clean up after your dog. Scoop the poop.
- \* Follow directions when you use lawn and garden chemicals. Do not apply too much.
- \* Clean up spilled brake fluid, oil, grease, and antifreeze. Dispose of them properly. Do not hose them into the street where they can eventually reach local streams and lakes.
- \* Stencil and decal storm drains to warn people that the drain leads to the river.
- \* Compost yard waste (grass clippings and leaves).



Together we can make our river safe for swimming, wading, and fishing in the future. Until then, follow this brochure's DO's and DON'Ts and safely enjoy the river.

SDMS DocId

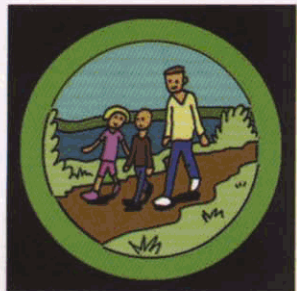
236978





# DO's

**WHILE THE BLACKSTONE RIVER IS NOT YET FISHABLE AND SWIMMABLE THERE ARE MANY SAFE WAYS TO ENJOY THE RIVER!**



**WALK**



**PICNIC**



**BIKE**



**EXPLORE  
IN DESIGNATED AREAS**



**RUN**



**PADDLE**



**WASH UP!!!**

**TO REDUCE RISKS TO YOU AND YOUR FAMILY AND TO BE SAFE, EVERYONE MUST WASH WITH SOAP AND WATER AFTER TOUCHING THE RIVER.**

# DON'Ts

Heavy rains cause high levels of bacteria and germs in the river. This can cause an upset stomach.



- Copper, lead and other contaminants of concern have been found in the Blackstone River.
- These contaminants come from waste discharges and past industry practices.



**DON'T EAT FISH, EELS, ANIMALS OR ANY PLANTS THAT YOU FIND IN THE RIVER!**



- \* Contaminated fish, animals and plants may look, smell or taste fine but they could make you sick.
- \* Cooking does not get rid of these contaminants.
- \* Fishing along the river is OK for fun, but you must throw back whatever you catch. This is called catch and release.
- \* This will keep you and your family from getting sick!!!

**NO SWIMMING, BATHING OR WADING!**

