

US EPA ARCHIVE DOCUMENT

**NJIT TAB & USEPA
RLF Workshop
October 13 & 14, 2010**

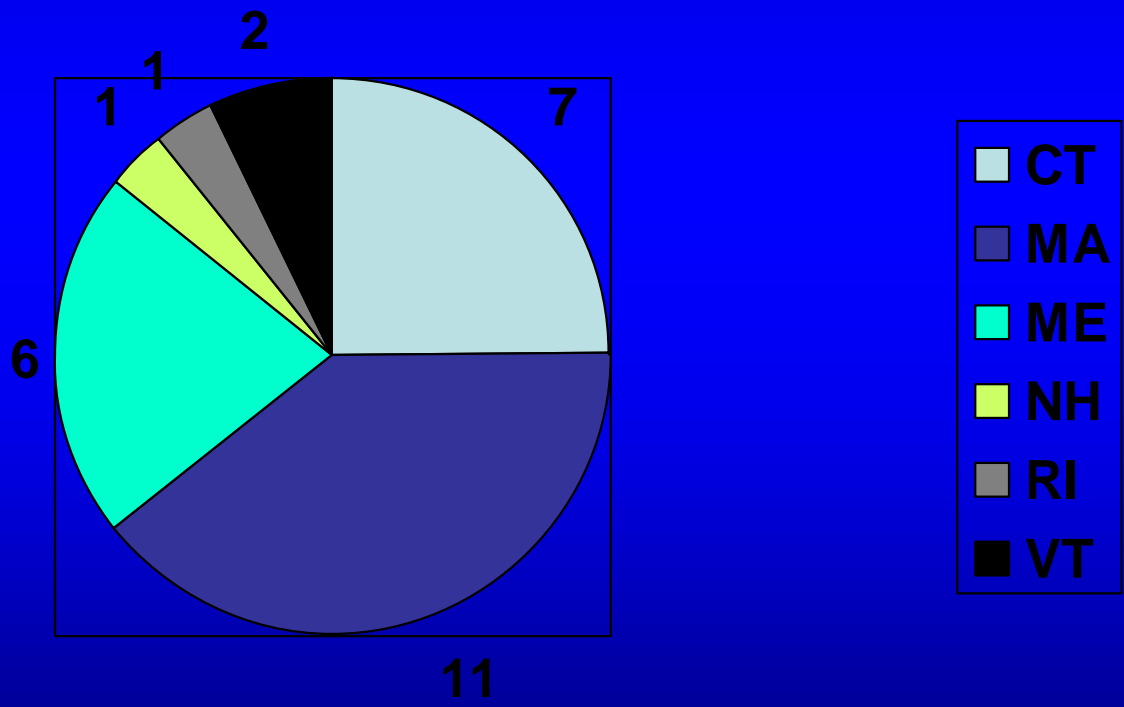


**ACRES
RLF Compliance**



Region 1 RLFs

- 38 Active RLF Cooperative Agreements
- 28 Recipients





Region 1 RLF Accomplishments

- Loans/Subgrants to 63 Properties
- Cleanups Started at 47 Properties
- 26 Properties Cleaned up / Ready for Re-Use
- 52.38 Acres Cleaned Up
- 426 Jobs Leveraged
- \$105M Leveraged



How Are These Successes Measured?



ASSESSMENT CLEANUP &
REDEVELOPMENT EXCHANGE SYSTEM



ASSESSMENT CLEANUP &
REDEVELOPMENT EXCHANGE SYSTEM



Who needs to use ACRES?



What is ACRES?

When do we use ACRES?



Why do we have ACRES?

How can we get help with ACRES?





Who Needs to Use ACRES?

Everyone!

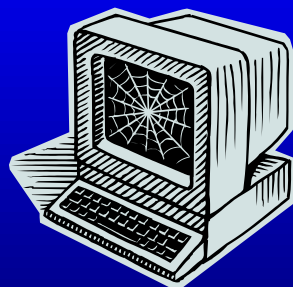
- All Grantees are required to use ACRES to input Property Profile Form data.





What Is ACRES?

- Web-based reporting tool tracks your RLF cleanup milestones, redevelopment info, jobs and dollars leveraged, and other key data.
- Eliminates paper Property Profile Forms and also help to achieve goals under Paperwork Reduction Act





When Do We Use ACRES?

- When Loan/Subgrant Agreement Is Issued
 - ✓ Associate property record to RLF
- When Cleanup Activities Begin
 - ✓ Cleanup planning (CRP, ABCA, QAPP, etc.)
 - ✓ Cleanup activities in the field
 - ✓ Coordinate reporting with cleanup grant (if any)





When Do We Use ACRES?

- Cleanup Completion
 - ✓ Completion date (definition)
 - ✓ Jobs and dollars leveraged (report only once)
 - ✓ Match dates to cleanup grant (if any)
- Post-Cleanup
 - ✓ Institutional controls
 - ✓ Redevelopment dates, jobs, and dollars





Why Do We Have ACRES?

The Government Performance and Results Act (GPRA) requires federal programs to demonstrate programmatic results for funding received and/or requested. As such, the success of each federal program hinges on its ability to produce verifiable results and outcomes.

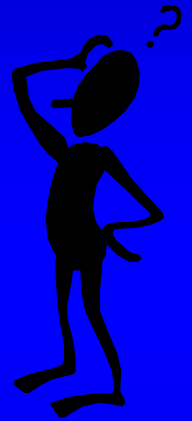




Why Do We Have ACRES?

So what does this mean?.....

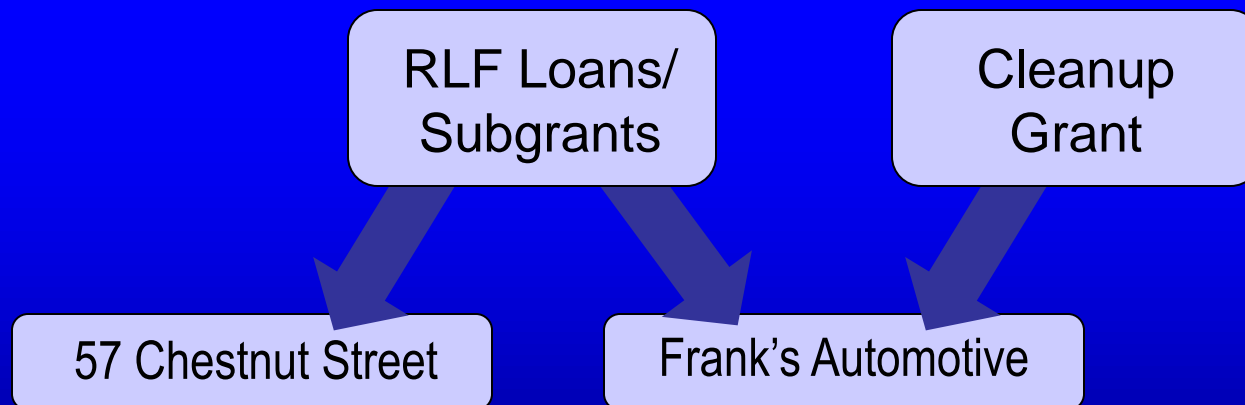
That in order to justify and continue funding the Brownfields program we have to collect and report data on our accomplishments





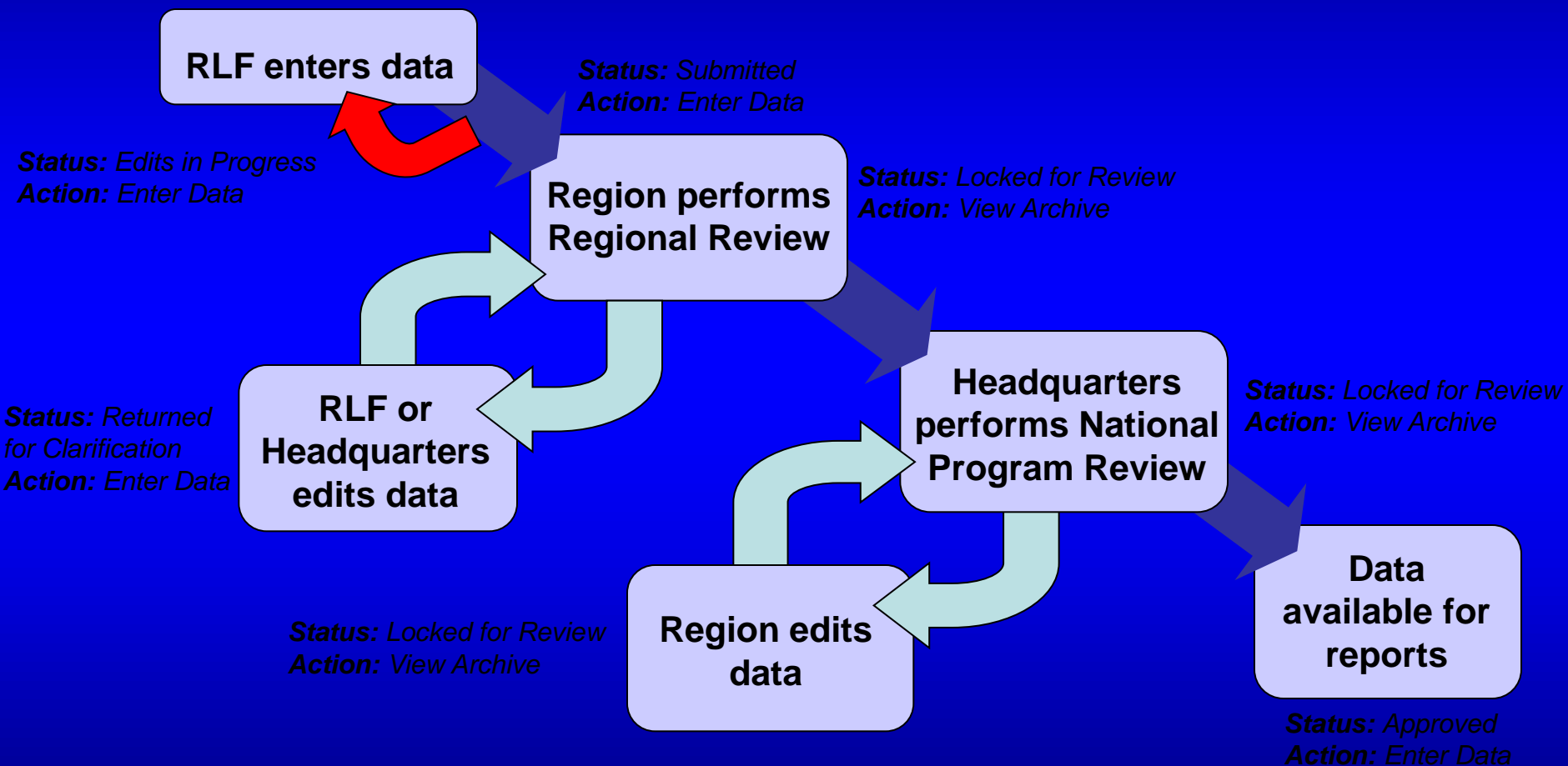
Data Organization in ACRES

- Each Cooperative Agreement is one record in ACRES
- A single property may be associated with more than one grant





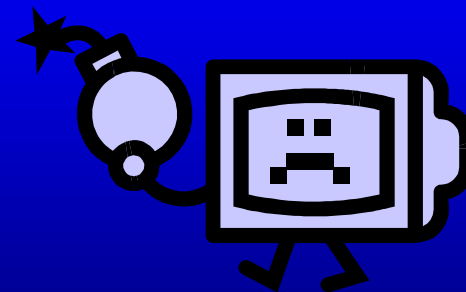
Data Workflow





Common RLF Issues with ACRES

- ✓ Sites vs. properties
- ✓ Duplicate property records (esp. RLFs)
- ✓ Importance of dollars and jobs leveraged
- ✓ Matching dates with cleanup grant
- ✓ Cleanup completion date definition
- ✓ Double-reporting of leveraging info





Help with ACRES?

“Contact Us” link in ACRES at top right hand corner.
Phone number and email for help.

ACRES EPA Regional Contact

Frank Gardner

617-918-1278

gardner.frank@epa.gov

EPA HQ [online ACRES trainings](#).

Due to resume after October 2010.

Training Info can be found at:

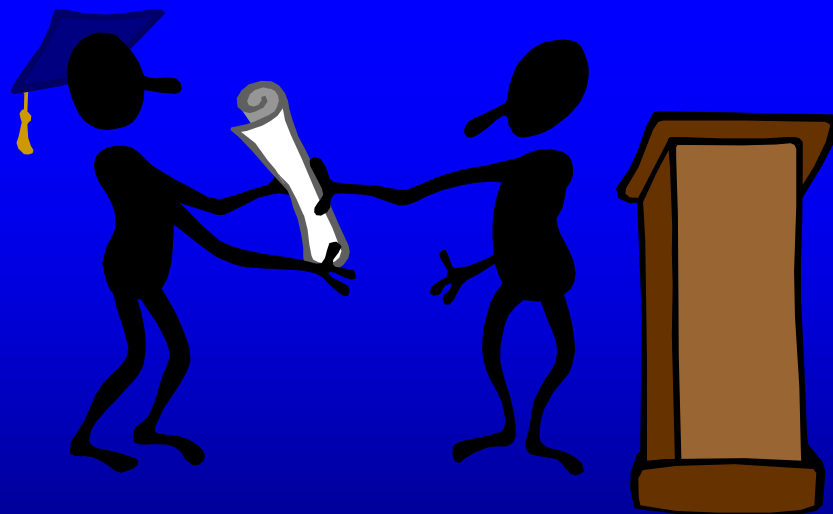
<http://www.epa.gov/brownfields/pubs/acres/trainingschedule.htm>



Honor Roll – Cumulative



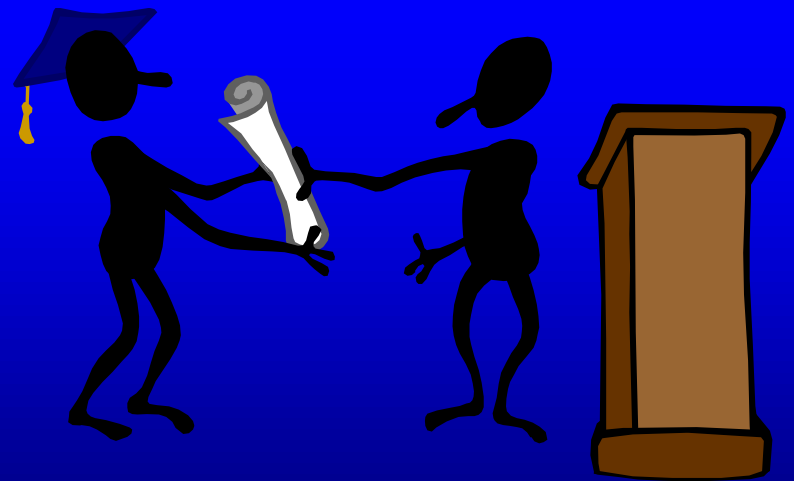
- Most Loans/Subgrants (Properties Associated)
 - ✓ 11 (NHDES)
 - ✓ 9 (CT DECD)
 - ✓ 7 (SWC RPC and VT ACCD)
- Most Cleanups Started
 - ✓ 10 (NHDES)
 - ✓ 6 (CT DECD)
 - ✓ 5 (PVPC and RIEDC)





Honor Roll - Cumulative

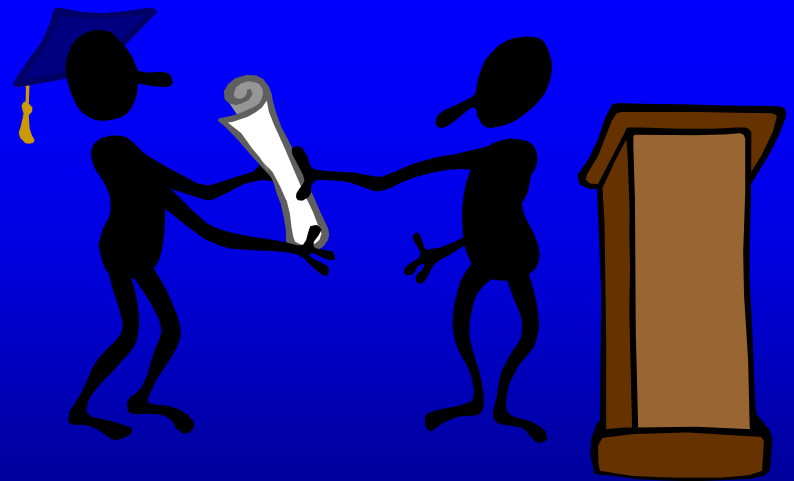
- Most Cleanups Complete / Ready for Re-Use
 - ✓ 6 (CT DECD)
 - ✓ 5 (NH DES)
 - ✓ 4 (Bath, ME)
- Most Acres Cleaned Up
 - ✓ 29.25 (NHDES)
 - ✓ 7.61 (Bath, ME)
 - ✓ 5.43 (CT DECD)





Honor Roll - Cumulative

- Most Jobs Leveraged
 - ✓ 213 (CT DECD)
 - ✓ 83 (SWC RPC)
 - ✓ 63 (SMRPC)
- Most Dollars Leveraged
 - ✓ \$40M (NHDES)
 - ✓ \$21M (RI EDC)
 - ✓ \$13M (Bath, ME)





Honor Roll – FY 2010

- Most Cleanups Completed / Ready for Re-Use
 - ✓ 4 (CT DECD)
- Most Acres Cleaned Up
 - ✓ 4.8 (Bridgeport)
- Most Jobs Leveraged
 - ✓ 120 (CT DECD)
 - ✓ 63 (SMRPC)
- Most Dollars Leveraged
 - ✓ \$6M+ (SMRPC and Bridgeport)
 - ✓ \$5M (Pioneer Valley PC)





Questions?

