

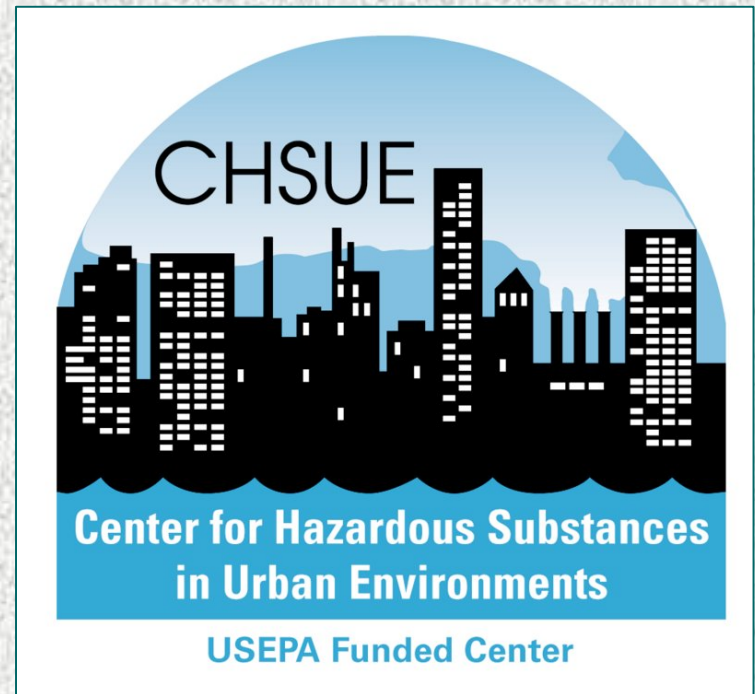
US EPA ARCHIVE DOCUMENT

# Technical Assistance to Brownfields/ Technical Outreach Services to Communities

Presented by:

Christopher Perkins  
and Kevin Hood

Environmental Research Institute  
University of Connecticut



# Center for Hazardous Substances in Urban Environments

- **Johns Hopkins Univ.--Lead Institution**



- **University of Maryland**

- **Morgan State University**

- **University of Connecticut**

- **New Jersey Institute of Technology**



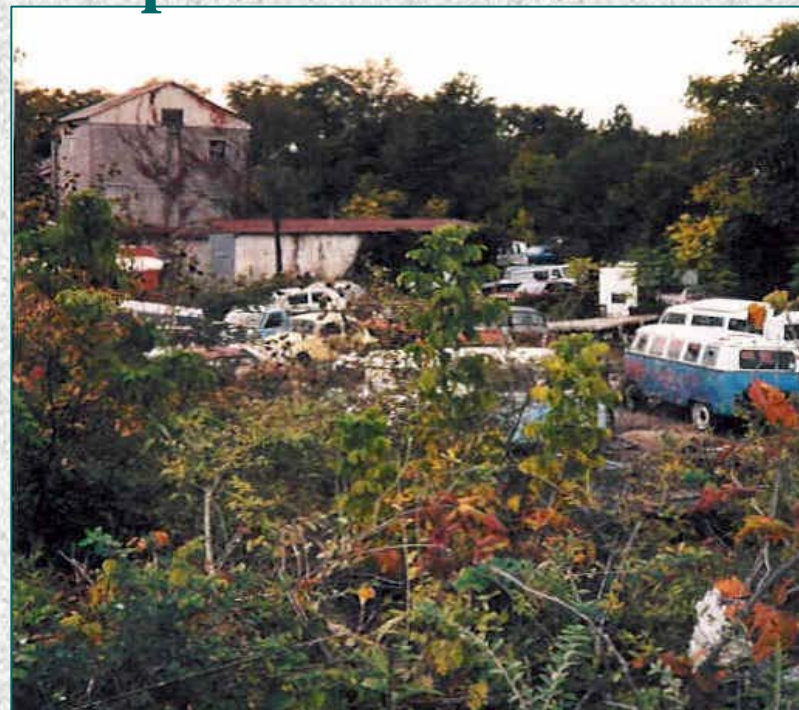
# Center Mission

---

- **Promote better understanding of physical, chemical, and biological processes for detecting, assessing, and managing risks associated with the use and disposal of hazardous substances in urban environments**
- **Disseminate the results of the research and provide technical expertise to various stakeholders including community groups, municipal officials, EPA, State, and local regulators, and industry**

# Hazardous Substance Research Centers Outreach Component

- **Center Covers Regions 1, 2, and 3**
- **Funded out of EPA RCRA and Superfund**
- **TOSC (Technical Outreach Services to Communities)**
- **TAB (Technical Assistance to Brownfield Communities)**



Source: Robyn Gilden

# Projects

---

- **Massachusetts Military Reservation (MMR)**
- **Newhall Coalition – Hamden, CT**
- **Ninigret Park, Charlestown, RI**
- **Elizabeth Mine – Strafford, VT**
- **Roosevelt Mills – Vernon, CT**
- **Fish and Game Club lead BMPs – various in CT**
- **Mallory Hat Factory – Danbury, CT**

# Projects

---

## Tribal Assistance

- **Passamaquoddy Tribe – Pleasant Point, ME**
- **Mic Mac Tribe - Caribou, ME**
- **Penobscot Tribal Nation – Bangor, ME**
- **Wampanoag Tribe – Gay Head, MA**
- **Narragansett Tribe – Charlestown, RI**

# TOSC

- **Assists** community members in becoming active participants in cleanup and environmental development activities.
- **Provides independent and credible technical assistance.**
- **Reviews and interprets technical documents.**
- **Sponsors workshops, short courses, and other learning experiences to explain basic science and environmental policy.**
- **Offers training to community leaders in facilitation and conflict resolution.**

## TAB

- **Leadership training;**
- **Risk assessment and communication;**
- **Brownfields processes;**
- **Site assessment;**
- **Cleanup alternatives.**



# **TOSC/TAB Project Selection**

---

## **How Select Communities?**

- **EPA Recommendation**
- **Communities Call Us**
- **We Contact Communities**

## **Criteria?**

- **Contaminated Site**
- **Need Basis**
- **Established Community Group**
- **Representative of the Community**

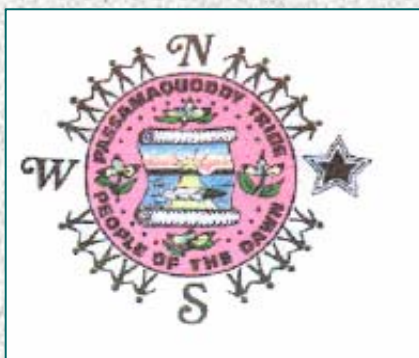
## Roosevelt Mills - CT

### Activities include:

- **Assisting in the town in areas to obtain funding**
- **Providing technical review of remediation and treatability studies**



# Tribal Assistance



# Passamaquoddy Tribe at Pleasant Pt., ME

- This program was to conduct an oil spill training for the tribal response team
- This course was designed to assist the tribal departments in strategizing and securing needed equipment to minimize impacts of an oil spill on tribal coastal areas.
- The tribal community harvests shellfish for sustenance and wage earnings.
- Building the capacity to respond to chemical and oil spills that will impact the limited natural resources that the tribe manages.



## Mic Mac Tribe, ME

### Activities include:

- Assisting the tribe in the review of human health and ecological risk assessments.
- Provide technical review of documents related to the tribal acquisition of DOD properties at the old Loring AFB as it relates to traditional tribal uses.



# Risk Communication

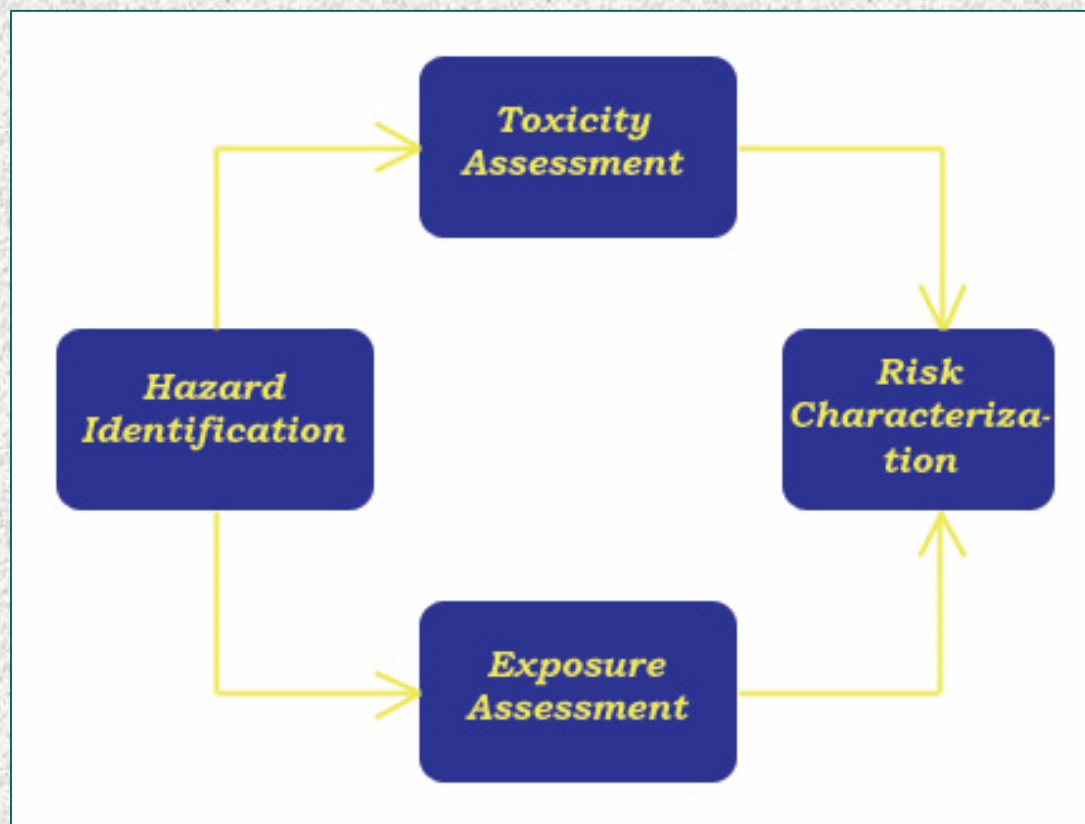
---

- **Important in the Scope of Brownfields Redevelopment and Reuse**
- **Intimately Tied with the Concepts of Risk Assessment and Risk Management**
- **If Not Done Correctly, can Provide Added Uncertainty – and Result in Frustration**

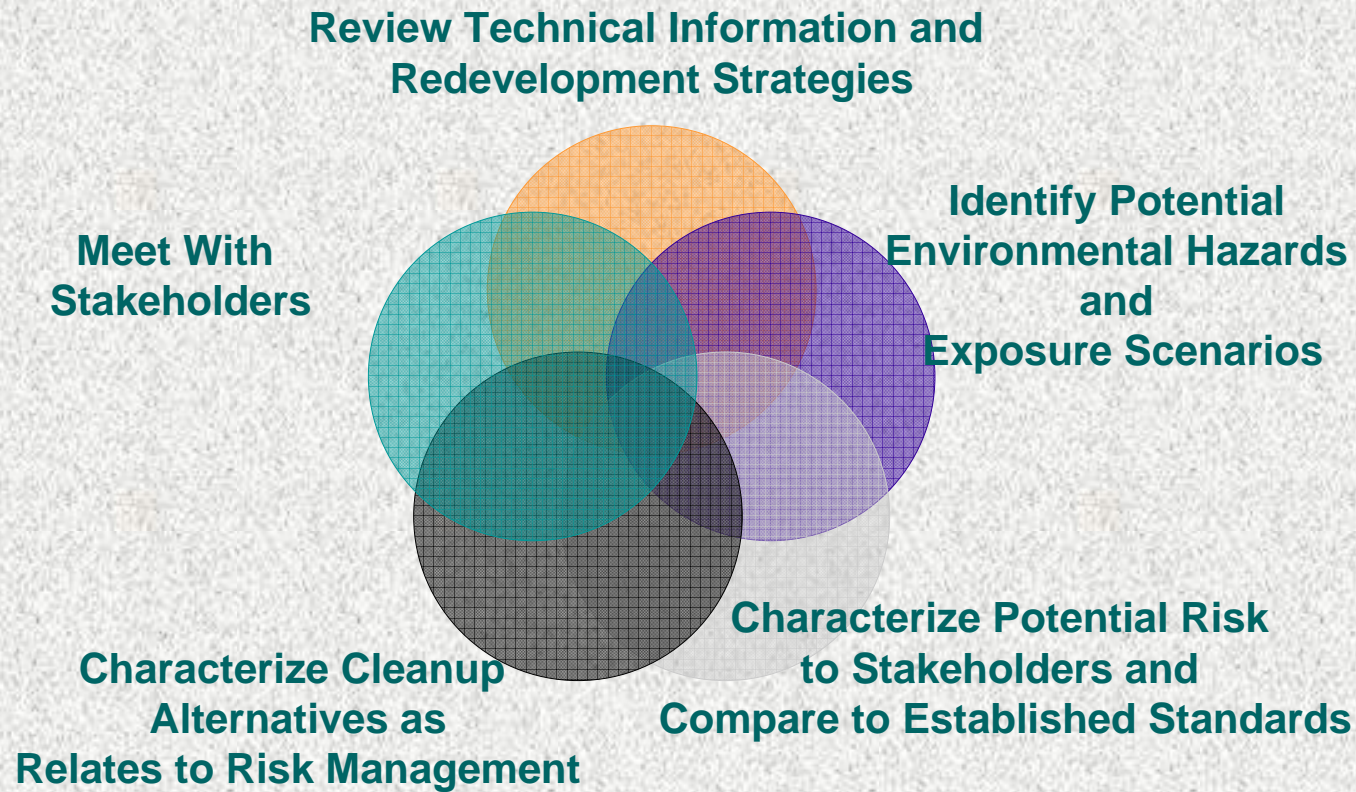
# Risk Communication

- **Starts with a Risk Assessment**

- Scientific Process
- Hazards
- Toxicity
- Exposure



# Risk Communication



# Risk Communication

---

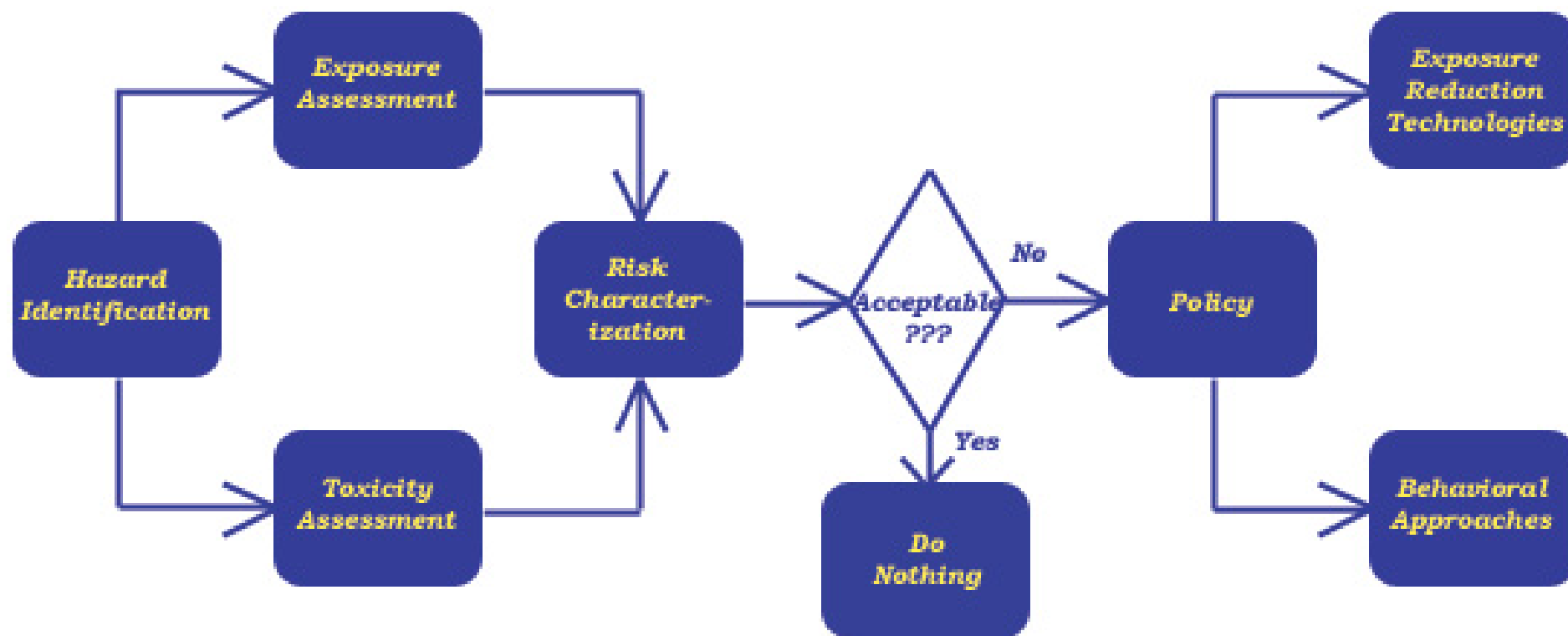
- **Key Concepts**
  - **Perception vs. Reality**
  - **Knowledge**
  - **Credibility**
  - **Commitment**
- **Keep the Stakeholders in the Process**
- **Know your Public**

# Risk Communication

---

- **Need to Break the Myths**
- **Identify and Respond to the Needs of Different Audiences**
- **Choose the Channels**
- **Place Things in Context**
  - **Health Standards**
  - **Remediation Standards**
- **Avoid Pitfalls**

# Risk Management



# Discussion



**Contact Information:**  
**Chris Perkins: 860-486-2668**  
**[cperkins@eri.uconn.edu](mailto:cperkins@eri.uconn.edu)**  
**Kevin Hood: 860-486-2546**  
**[khood@eri.uconn.edu](mailto:khood@eri.uconn.edu)**