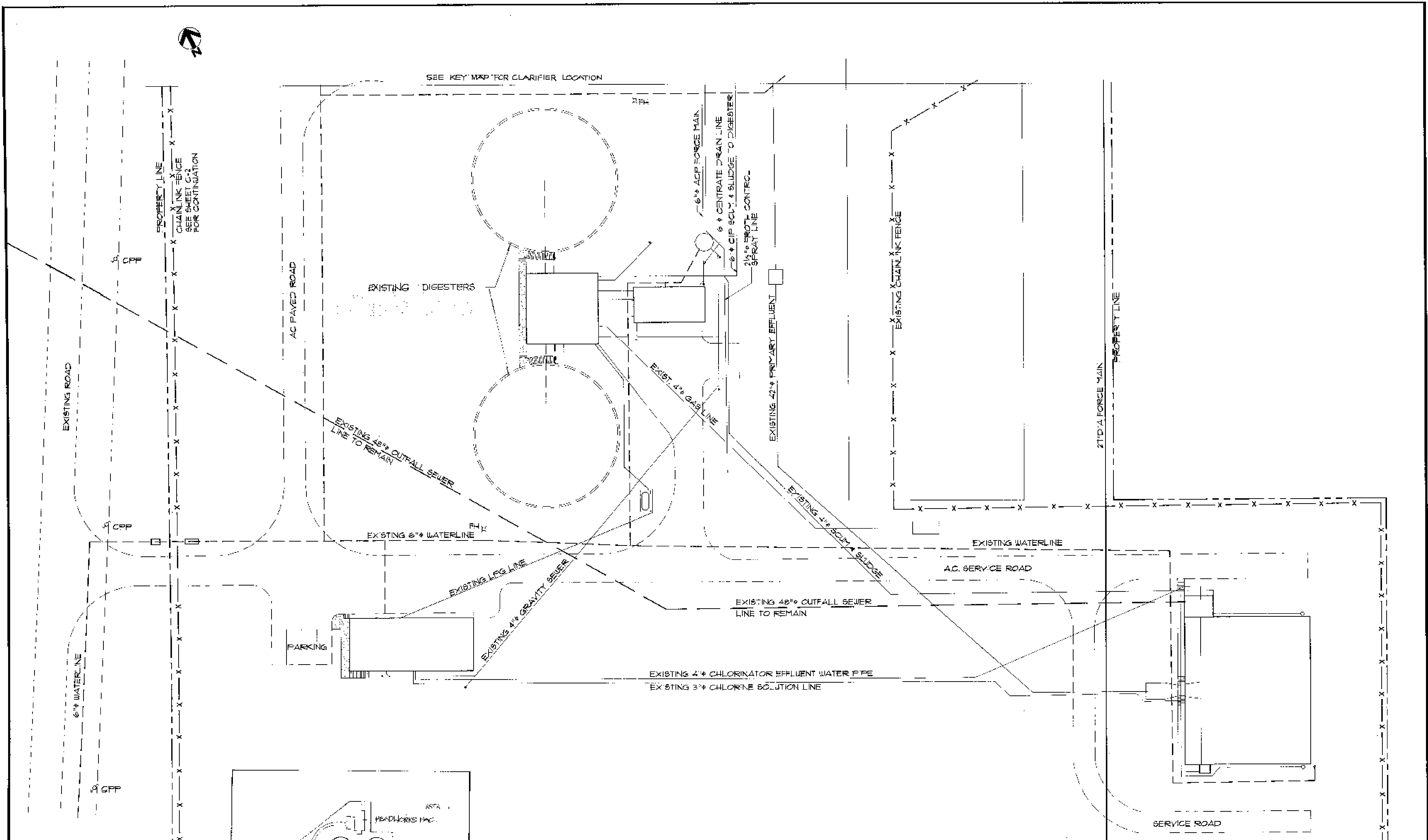
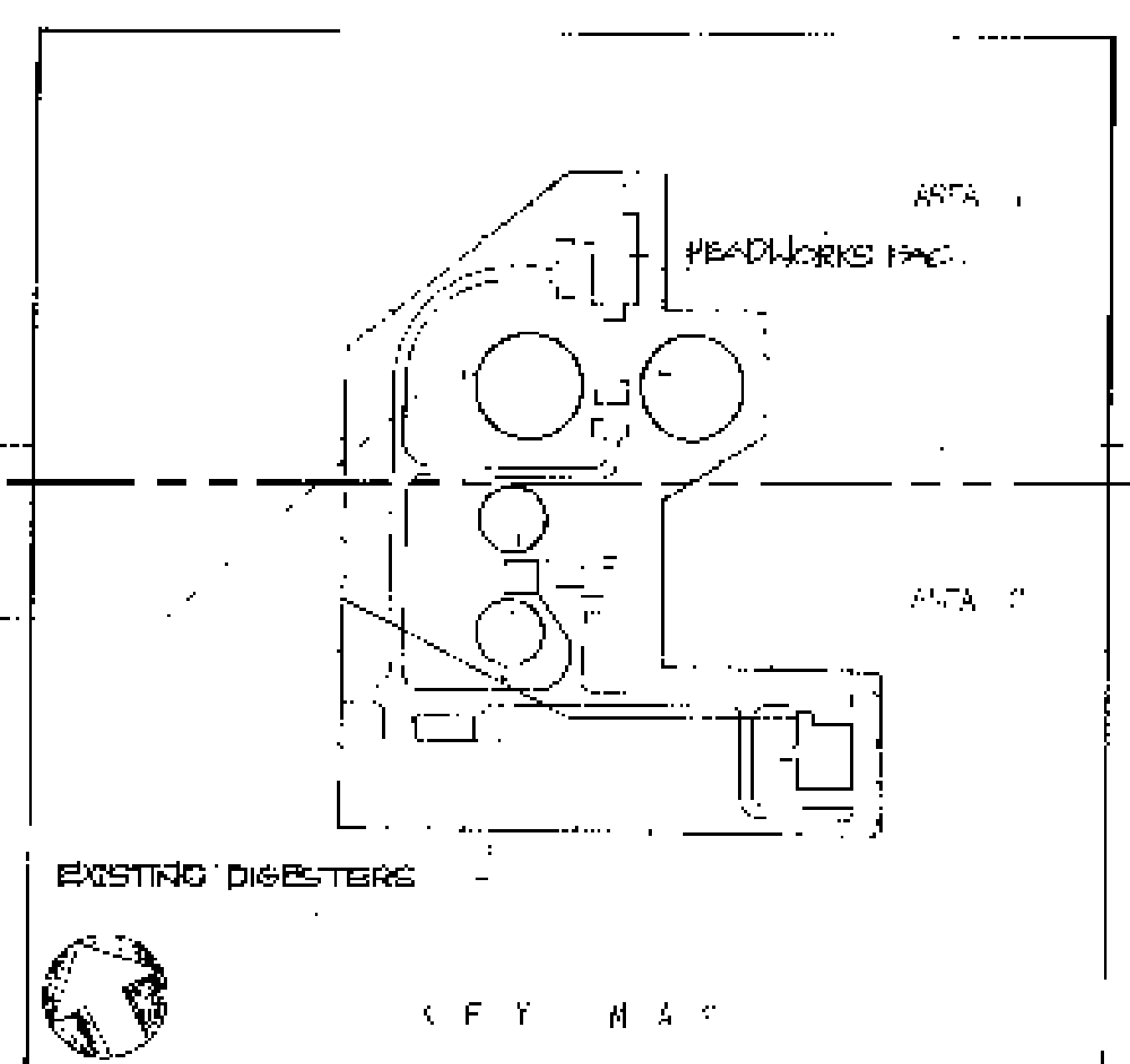


US EPA ARCHIVE DOCUMENT



ONE OF THESE TWO CLARIFIERS TO BE USED FOR STORAGE OF EFFLUENT DURING CUT-IN OF THE EFFLUENT LINE FOR BYPASSING. BIDDERS MUST ASSESS EXISTING CONDITIONS, INHERENT DIFFICULTIES AND DETAILED INFORMATION SUCH AS EXISTING INFLUENT FLOWS AT CERTAIN TIMES IN ORDER TO ESTIMATE AVAILABLE DURATION AND TIME TO ACCOMPLISH BYPASS CONNECTIONS.



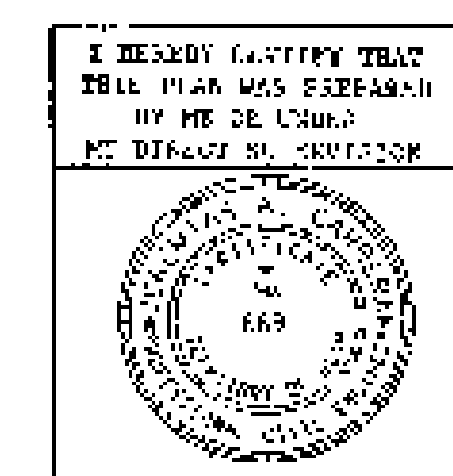
TREATMENT PLANT SITE AS-BUILT & EFFLUENT LINE LAYOUT PLAN

SCALE: 1" = 20' - 0"

SUBMITTING CONSTRUCTION CO. LTD.
AS-BUILT DRAWING

The certifier that the dimensions and details shown on this sheet reflect the as-constructed in the field.

Signature: _____ Date: 4/19/99



REV.	DATE	BY	DESCRIPTION	APPROVED
PACIFIC ISLAND ENGINEERS <small>ENGINEERS & ARCHITECTS</small> 1000 GARDEN DRIVE, SUITE 100 HONOLULU, HAWAII 96813 TEL. NO. 848-7431/23 FAX NO. 848-1282				
DES. CEC DRN. CEC CHK./IAC./REV.			GOVERNMENT OF GUAM GUAM WATERWORKS AUTHORITY	
SUPV. JAC			NORTHERN DISTRICT SEWERAGE SYSTEM EFFLUENT FORCE MAIN REPLACEMENT	
SUBMITTED BY:			TREATMENT PLANT SITE AS-BUILT & EFFLUENT LINE LAYOUT PLAN	
VIRGILIO NICOLAS <small>PROJECT ENGINEER</small>			RECOMMENDED BY: DATE JOB ORDER NO.	
RENATO ALCAZAREN <small>PROJECT MANAGER</small>			QUIRINO H. BASBAS, P.E. <small>CHIEF ENGINEER</small> DRAWING NO. C-1	
SCALE: PUAG DWG. NO.			SHT. 4 OF 11	