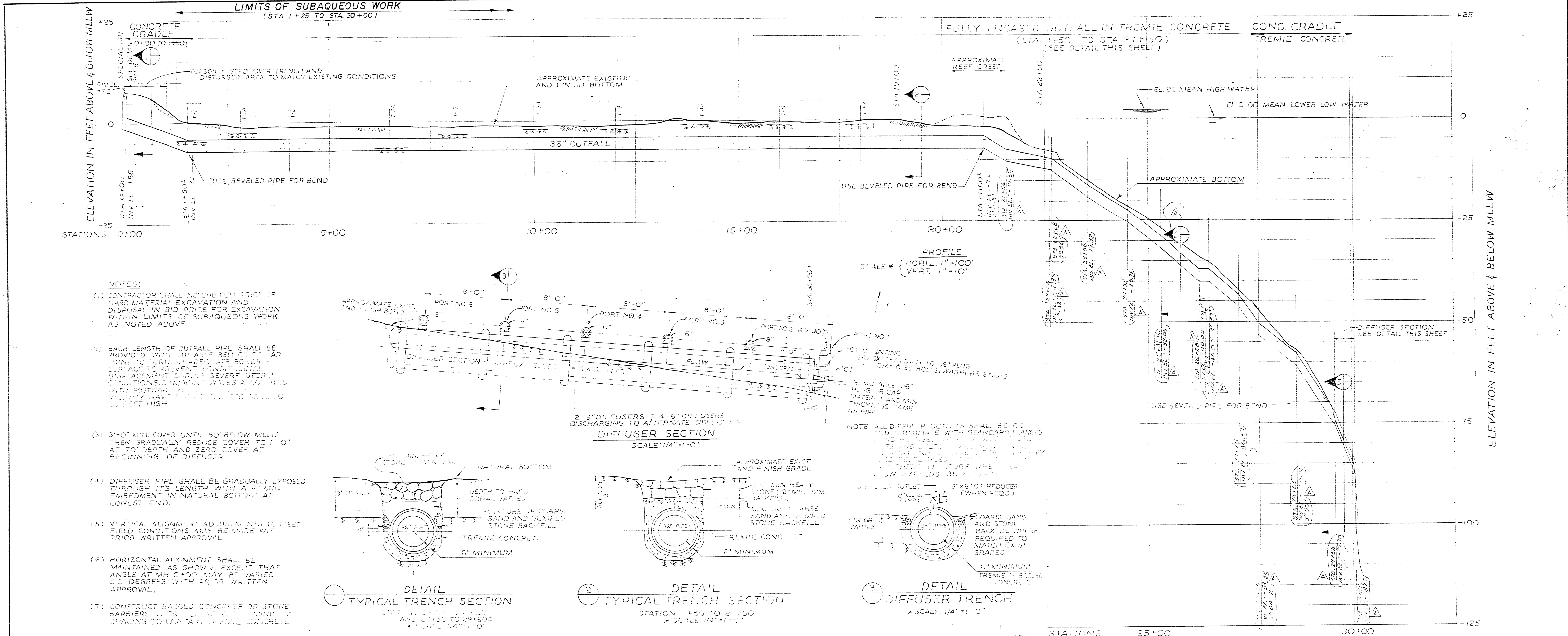
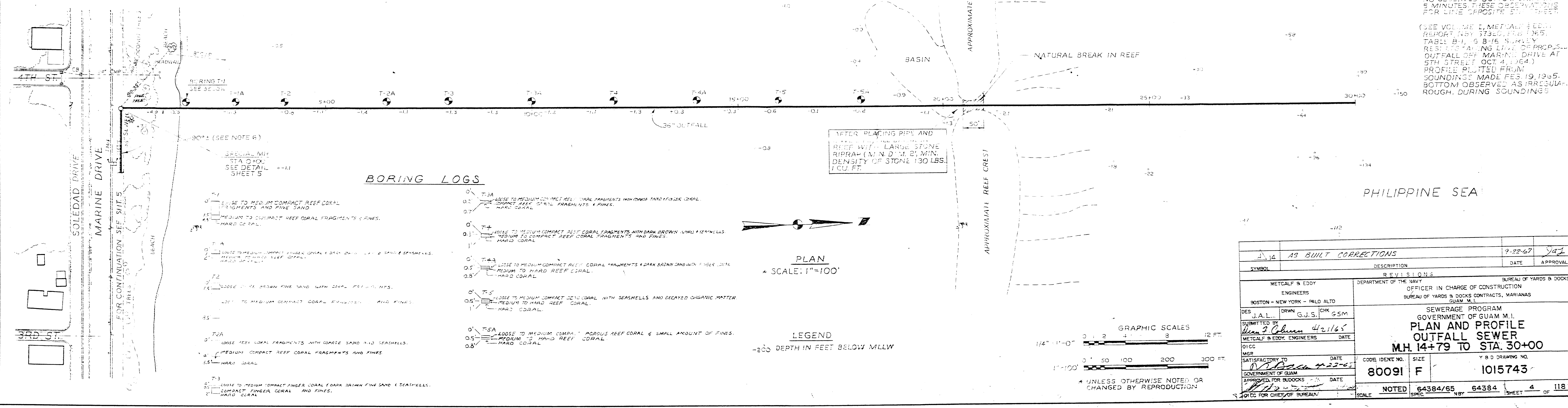
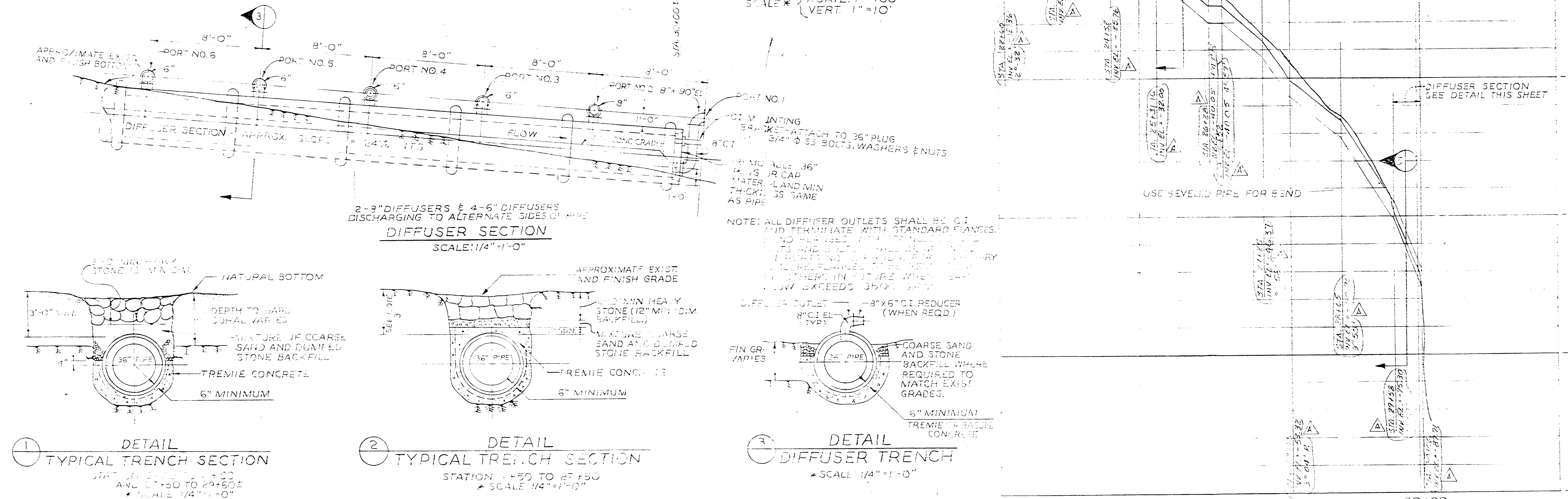


US EPA ARCHIVE DOCUMENT



- NOTES:**
- (1) CONTRACTOR SHALL INCLUDE FULL PRICE OF HARD MATERIAL EXCAVATION AND DISPOSAL IN BID PRICE FOR EXCAVATION WITHIN LIMITS OF SUBAQUEOUS WORK AS NOTED ABOVE.
 - (2) EACH LENGTH OF OUTFALL PIPE SHALL BE PROVIDED WITH SUITABLE BELL JOINT TO FURNISH ADEQUATE BONDING SURFACE TO PREVENT LEAKAGE UNDER DISPLACEMENT OF RIGID SEVERE STORM CONDITIONS DAMAGING WAVES AVOIDED WITH POSTWAVE SURGES EXCEEDED AS TO 25 FEET HIGH.
 - (3) 3'-0" MIN. COVER UNTIL 50' BELOW MILLW THEN GRADUALLY REDUCE COVER TO 1'-0" AT TO DEPTH AND ZERO COVER AT BEGINNING OF DIFFUSER.
 - (4) DIFFUSER PIPE SHALL BE GRADUALLY EXPOSED THROUGH ITS LENGTH WITH A 6" MIN. EMBEDMENT IN NATURAL BOTTOM AT LOWEST END.
 - (5) VERTICAL ALIGNMENT ADJUSTMENTS TO MEET FIELD CONDITIONS MAY BE MADE WITH PRIOR WRITTEN APPROVAL.
 - (6) HORIZONTAL ALIGNMENT SHALL BE MAINTAINED AS SHOWN, EXCEPT THAT ANGLE AT MH 0+00 MAY BE VARIED ± 5 DEGREES WITH PRIOR WRITTEN APPROVAL.
 - (7) CONSTRUCT BASED CONCRETE OR STONE BARRIERS TO PREVENT COLLAPSE OF SPAWING TO CONTAIN TREMIE CONCRETE.
 - (8) PLACE TREMIE CONCRETE FROM EACH SIDE OF PIPE SIMULTANEOUSLY, KEEP END OF TREMIE PIPES SUBMERGED IN CONCRETE.
 - (9) CLEAN saltwater may be used for mixing the tremie concrete.



NOTE: BOTTOM REPORTED AS DEAD CORAL SAND AND 180 FEET DEPTHS BY DIVERS OCT. 3, 1964. NO OBSERV. BOTTOM DRIET IN 5 MINUTES. THESE OBSERVATIONS FOR LINE OPPOSITE ST. 2+00.

(SEE VOLUME I, METCALP EDDY REPORT NO. 5732, P. 10, LINES 148-150, AND P. 11, LINES 1-3, FOR DETAILS OF SURVEY AND PHOTOGRAPHS OF OUTFALL OFF MARINE DRIVE AT 5TH STREET OCT. 4, 1964.)

PROFILES OBTAINED FROM SOUNDINGS MADE FEB. 19, 1965. BOTTOM OBSERVED AS IRREGULAR ROUGH DURING SOUNDING.

AS BUILT CORRECTIONS		DATE	APPROVAL
14		9-22-67	<i>[Signature]</i>
REVISIONS			
S	DESCRIPTION	DATE	APPROVAL
METCALP & EDDY ENGINEERS DEPARTMENT OF THE NAVY BUREAU OF YARDS & DOCKS OFFICER IN CHARGE OF CONSTRUCTION BUREAU OF YARDS & DOCKS CONTRACTS, MARIANAS GUAM, M.I.			
SUBMITTED BY: <i>[Signature]</i> DRAWN: G.J.S. CHK: S.S.M. METCALP & EDDY ENGINEERS DATE: <i>[Date]</i> SATISFACTORY TO: <i>[Signature]</i> DATE: <i>[Date]</i> GOVERNMENT OF GUAM APPROVED FOR BOOKS: <i>[Signature]</i> DATE: <i>[Date]</i> CHIEF OF BUREAU: <i>[Signature]</i>			
80091	F	1015743	
NOTED 64384/65		64384	4 OF 118

