

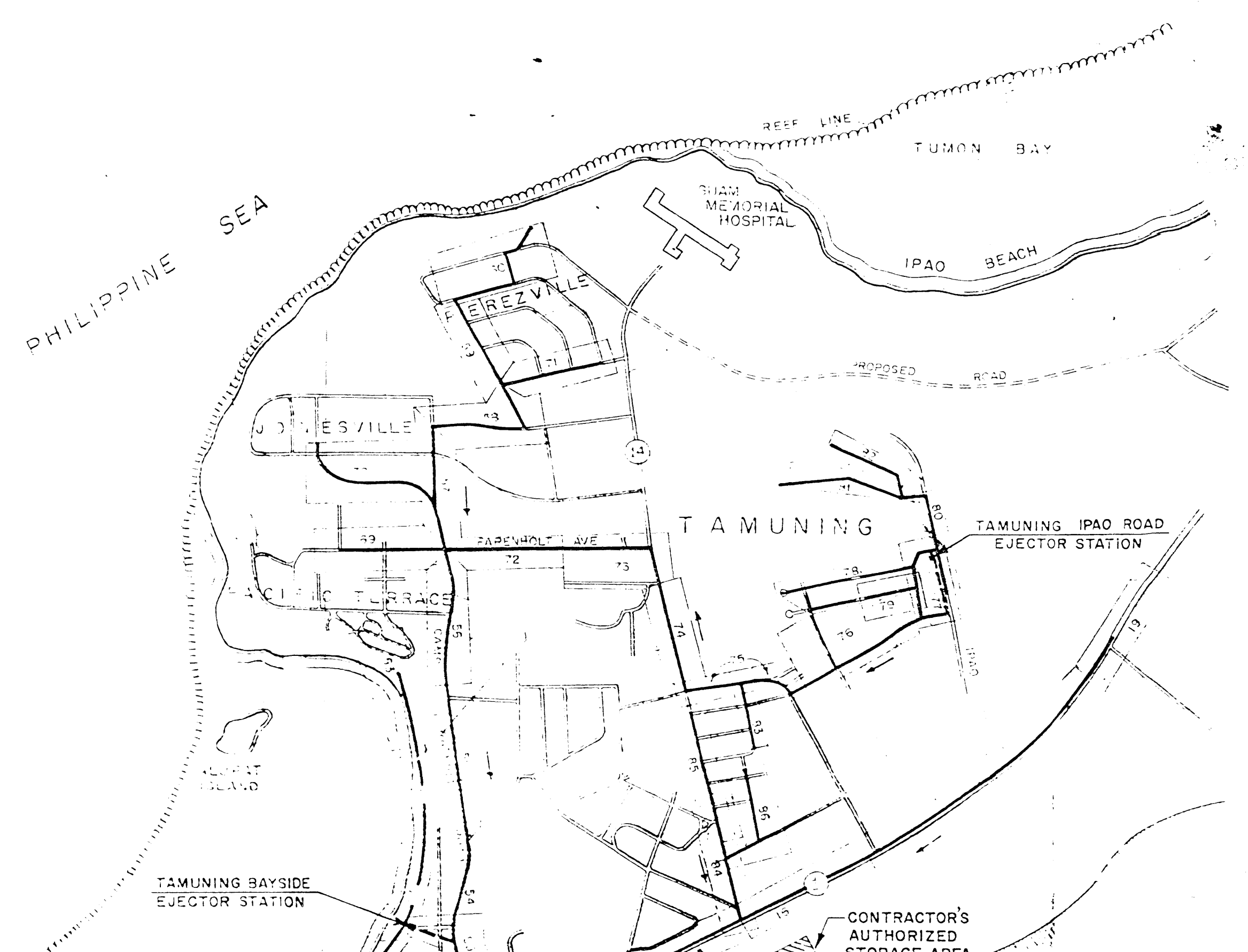
US EPA ARCHIVE DOCUMENT

GOVERNMENT OF GUAM SEWAGE COLLECTION AND DISPOSAL SYSTEM CENTRAL SEWERAGE DISTRICT GUAM, M.I.

NBY 64384

OFFICER IN CHARGE OF CONSTRUCTION BUREAU OF YARDS AND DOCKS CONTRACTS MARIANAS

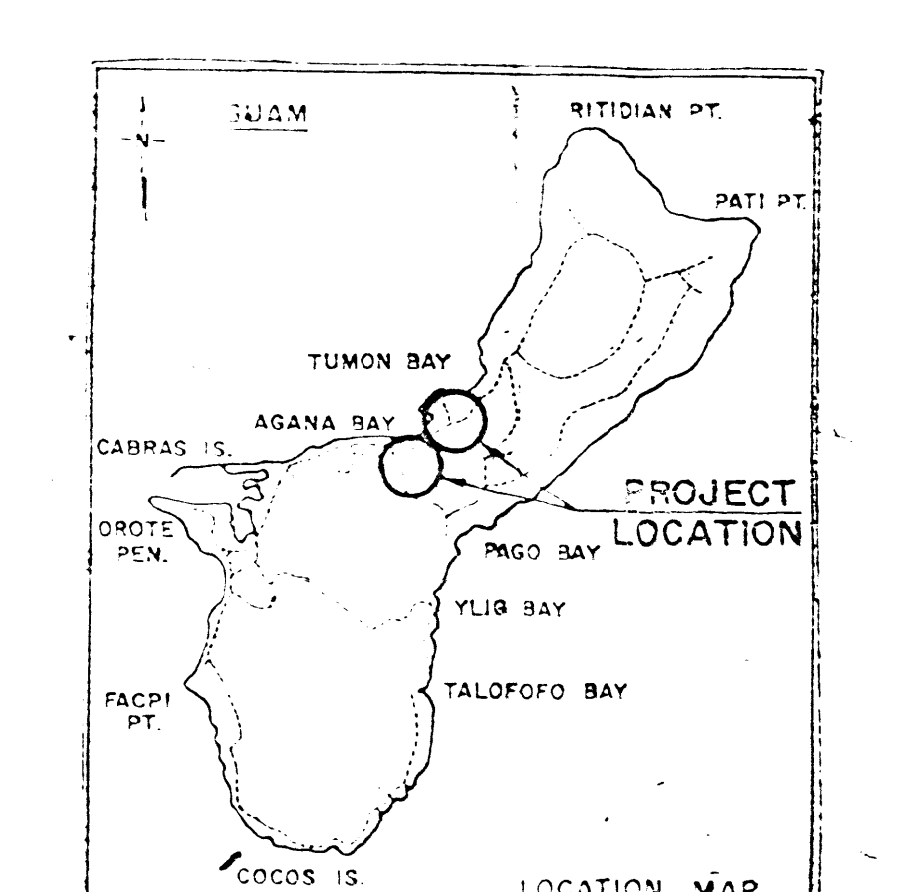
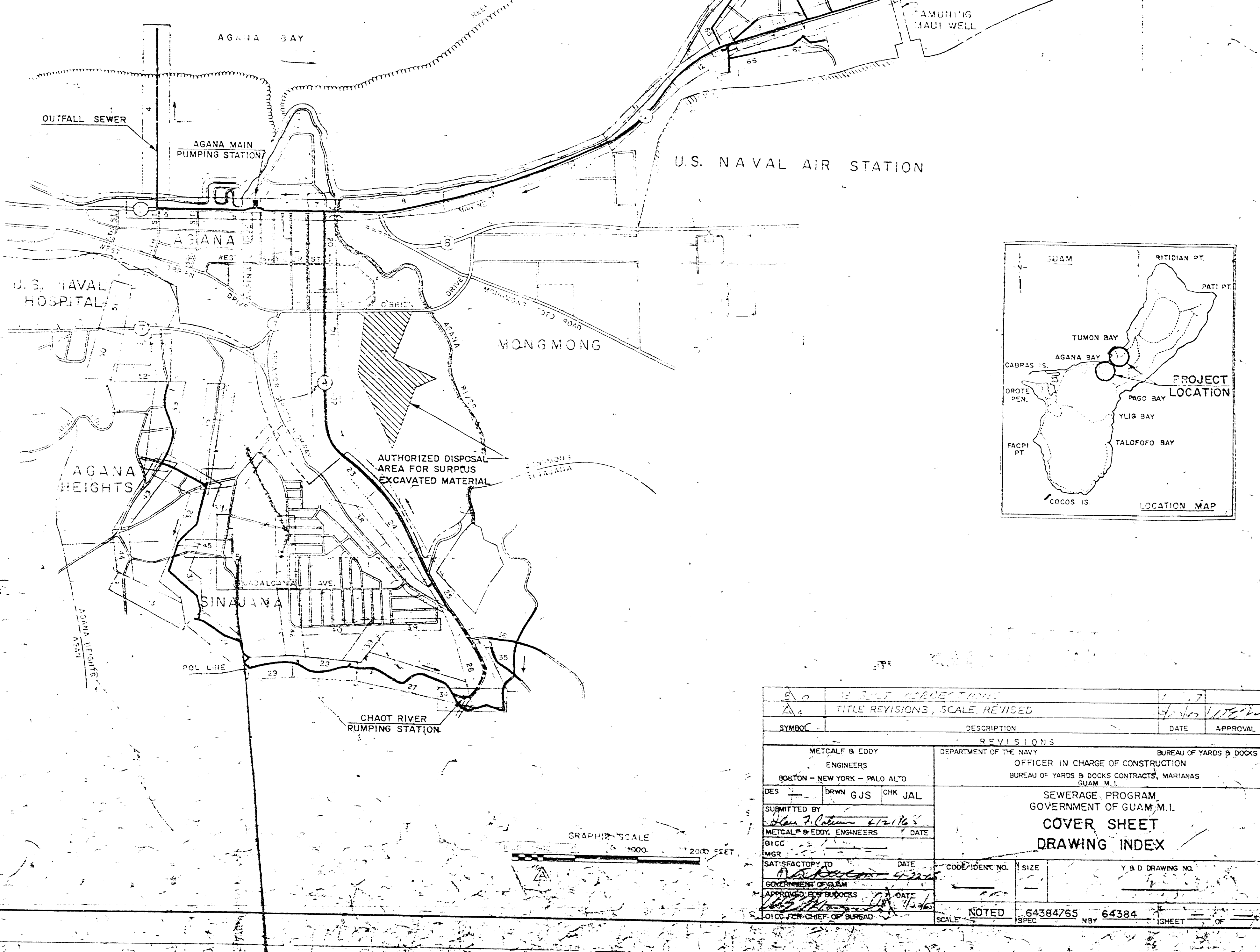
METCALF & EDDY ENGINEERS BOSTON - NEW YORK - PALO ALTO



DRAWING INDEX

SHEET NO.	Y&D NO.	DRAWING TITLE
1	1015740	GENERAL NOTES - SEWER DETAILS-1
2	1015741	GENERAL LEGEND - SEWER DETAILS-2
3	1015742	SEWER DETAILS-3
4	1015743	PLAN AND PROFILE
5	1015744	OUTFALL SEWER - MH 14+79 TO STA. 30+00
6	1015745	MARINE DRIVE - MH 14+79 TO STA. 8+00
7	1015746	STA. 8+00 TO STA. 4+00
8	1015747	STA. 4+00 TO STA. 17+00
9	1015748	STA. 17+00 TO STA. 31+00
10	1015749	STA. 31+00 TO STA. 45+00
11	1015750	STA. 45+00 TO STA. 59+00
12	1015751	STA. 59+00 TO STA. 73+00
13	1015752	STA. 73+00 TO STA. 87+00
14	1015753	STA. 87+00 TO STA. 99+00
15	1015754	STA. 99+00 TO STA. 113+00
16	1015755	STA. 113+00 TO STA. 126+00
17	1015756	STA. 126+00 TO STA. 140+50
18	1015757	STA. 140+50 TO STA. 154+00
19	1015758	STA. 154+00 TO STA. 168+00
20	1015759	STA. 168+00 TO MH 170+45
21	1015760	ROUTE 4 - MH 0+00 TO STA. 11+00
22	1015761	STA. 11+00 TO STA. 22+00
23	1015762	STA. 22+00 TO STA. 36+00
24	1015763	STA. 36+00 TO STA. 50+00
25	1015764	STA. 50+00 TO STA. 65+00
26	1015765	STA. 65+00 TO STA. 79+00
27	1015766	STA. 79+00 TO CHAOT RIVER P.S.
28	1015767	CHAOT RIVER P.S. TO STA. 14+00
29	1015768	STA. 14+00 TO STA. 28+00
30	1015769	STA. 28+00 TO STA. 41+00
31	1015770	EASEMENT - STA. 41+00 TO STA. 54+00
32	1015771	HAYAN GUBETNO EASEMENT - STA. 54+00 TO STA. 57+00
33	1015772	STA. 57+00 TO STA. 55+00
34	1015773	P.O.L. LINE - CHAOT RIVER P.S. TO STA. 15+00
35	1015774	HAYAN AFAME - STA. 15+00 TO MH 21+04
36	1015775	CHALAN AFAME - MH 21+04 TO MH 23+95
37	1015776	SENATOR GUBERN - MH 23+95 TO STA. 12+00
38	1015777	SENATOR GUBERN - HIGHWAY - STA. 12+00 TO MH 24+99
39	1015778	ENIWETOK AVENUE - MH 19+57 TO MH 14+00
40	1015779	MH 6+20 TO MH 1+30
41	1015780	KWAJALEIN AVENUE - MH 32+52 TO STA. 10+00
42	1015781	STA. 10+00 TO MH 20+85
43	1015782	CHALAN ALUTUM EASEMENT - MH 23+99 TO MH 12+35
44	1015783	CHALAN ALUTUM - MH 21+33 TO STA. 19+52
45	1015784	GANTON TUTUJUAN - MH 05+46 TO MH 9+14
46	1015785	ORIVAN EASEMENT - MH 7+85 TO MH 14+20
47	1015786	ORIVAN AGANA HEIGHTS - MH 49+75 TO MH 14+90
48	1015787	HAYAN GUBETNO - MH 77+49 TO MH 12+99
49	1015788	HALUM AGANA HEIGHTS - MH 85+26 TO MH 12+50
50	1015789	GANTON TUTUJUAN - APUGAN P.S. TO STA. 10+50
51	1015790	NAVAL HOSPITAL - STIFF ROAD - STA. 10+50 TO EXIST. MH
52	1015791	APUGAN DRIVE - MH 3+16 TO MH 10+50
53	1015792	CAMP WATKINS ROAD - MH 99+58 TO STA. 9+00
54	1015793	STA. 9+00 TO STA. 20+00
55	1015794	STA. 20+00 TO STA. 34+00
56	1015795	STA. 34+00 TO STA. 48+00
57	1015796	DECATUR STREET - STA. 48+00 TO STA. 61+00
58	1015797	FR. PALOMA ST. - ADMIRAL LITCH ST. STA. 61+00 TO STA. 75+00
59	1015798	ADMIRAL LITCH ST. - STA. 75+00 TO STA. 86+00
60	1015799	FR. ROMAN STREET - FR. DUEÑAS DRIVE - STA. 86+00 TO EXIST. MH
61	1015800	TAMUNING BAYSIDE - MH 0+80 TO STA. 11+00
62	1015801	STA. 11+00 TO STA. 21+00
63	1015802	STA. 21+00 TO STA. 24+30
64	1015803	TAMUNING BAYSIDE P.S. TO STA. 13+00
65	1015804	STA. 13+00 TO STA. 22+00
66	1015805	DEL ROSARIO LANE - STA. 22+00 TO STA. 31+00
67	1015806	STA. 31+00 TO MH 43+46
68	1015807	THEATER LANE - MH 22+30 TO MH 7+79
69	1015808	FARENHOLT AVENUE - MH 48+12 TO MH 11+60
70	1015809	CENTER DRIVE - MH 53+66 TO MH 12+98
71	1015810	FR. SAN VITORES ST. - MH 75+13 TO MH 12+57
72	1015811	FARENHOLT AVENUE - MH 48+12 TO STA. 11+00
73	1015812	STA. 11+00 TO STA. 23+00
74	1015813	HOSPITAL ROAD - STA. 23+00 TO STA. 34+00
75	1015814	HOSPITAL RD. - "D" LANE - STA. 34+00 TO STA. 46+00
76	1015815	"E" LANE - OLIVE LANE - STA. 46+00 TO STA. 58+00
77	1015816	"E" LANE - IPAO ROAD - STA. 58+00 TO IPAO ROAD P.S.
78	1015817	LETICIA ROAD - GONN STREET TO OLIVE LANE
79	1015818	ESTRELLITA RD. - SONN ST. - MH 4+35 TO MH 7+00
80	1015819	IPAO ROAD - MH 5+87 TO MH 6+00
81	1015820	SOUTH GOLD COAST LANE - MH 6+00 TO MH 18+12
82	1015821	NORTH GOLD COAST LANE - MH 8+00 TO MH 12+86
83	1015822	"G" LANE - MH 40+21 TO MH 6+89
84	1015823	HOSPITAL ROAD - MH 125+12 TO STA. 12+50
85	1015824	STA. 12+50 TO MH 21+32
86	1015825	"L" LANE - EYE LANE - MH 6+85 TO MH 10+90
87	1015826	DEDEDO TRUNK SEWER - EXIST. MH TO STA. 13+00
88	1015827	STA. 13+00 TO STA. 24+00
89	1015828	STA. 24+00 TO MH 31+71
90	1015829	PUMPING STATIONS - ARCHITECTURAL
91	1015830	AGANA MAIN PUMPING STATION - PLOT & VICINITY PLANS
92	1015831	FIRST FLOOR & ROOF PLANS
93	1015832	PLANS & SECTIONS
94	1015833	ELEVATIONS
95	1015834	CHAOT RIVER PUMPING STATION - PLOT & VICINITY PLANS
96	1015835	PLANS, SECTIONS & DETAILS
97	1015836	ELEVATIONS
98	1015837	APUGAN PUMPING STATION - PLOT, VICINITY & ACCESS RD. PLANS
99	1015838	PLANS & SECTIONS
100	1015839	ELEVATIONS & DETAILS
101	1015840	TAMUNING EJECTOR STATIONS - VICINITY, PLOT & FLOOR PLANS & ELEV. PLOT & ACCESS RD. PLANS & SECTIONS
102	1015841	PUMPING STATIONS - STRUCTURAL
103	1015842	TYPICAL DETAILS, DESIGN DATA & GENERAL NOTES
104	1015843	AGANA MAIN PUMPING STATION - PLOT & FIRST FLOOR PLANS
105	1015844	FON. & INTERMEDIATE PLANS & SECTS.
106	1015845	BEAM SCHEDULE, SECTIONS & DETAILS
107	1015846	CHAOT RIVER PUMPING STATION - FLOOR PLANS & SECTIONS
108	1015847	PLANS, SECTIONS & DETAILS
109	1015848	APUGAN PUMPING STATION - BEAM SCHEDULE, SECTIONS & DETAILS
110	1015849	TAMUNING EJECTOR STATIONS - PLANS, SECTIONS, SCHEDULE & DETAILS
111	1015850	PUMPING STATIONS - MECHANICAL
112	1015851	AGANA MAIN PUMPING STATION - PLANS & SECTIONS
113	1015852	CHAOT RIVER PUMPING STATION - PLANS & SECTIONS
114	1015853	TAMUNING EJECTOR STATIONS - MECHANICAL & ELECTRICAL
115	1015854	APUGAN PUMPING STATION - PLANS, SECTIONS & DETAILS
116	1015855	TAMUNING EJECTOR STATIONS - PLANS, SECTIONS & DETAILS
117	1015856	PUMPING STATIONS - MECHANICAL
118	1015857	MISCELLANEOUS - PUMPING STATIONS - ELECTRICAL
119	1015858	AGANA MAIN PUMPING STATION - PLANS, SECTIONS & DETAILS
120	1015859	CHAOT RIVER PUMPING STATION - PLANS & DETAILS
121	1015860	MISCELLANEOUS - STANDARD SECURITY FENCE

N.I.C. - NOT IN CONTRACT



METCALF & EDDY ENGINEERS BOSTON - NEW YORK - PALO ALTO SUBMITTED BY: <i>Helen E. O'Brien</i> DATE: <i>4/2/72</i>		DEPARTMENT OF THE NAVY OFFICER IN CHARGE OF CONSTRUCTION BUREAU OF YARDS & DOCKS CONTRACTS, MARIANAS GUAM, M.I. SEWERAGE PROGRAM GOVERNMENT OF GUAM, M.I. COVER SHEET DRAWING INDEX	
TITLE: REVISIONS, SCALE, REVISED SYMBOL: <i>1</i>	DESCRIPTION:	DATE:	APPROVAL:
SCHEDULED TO:	DATE:	COORDINATE NO.:	Y&D DRAWING NO.:
APPROVED BY:	DATE:	SCALE:	NOTED:
64384/65		NBY 64384	