

US EPA ARCHIVE DOCUMENT

# **APPENDIX I**

## **Proposed Monitoring Program**

## **Proposed Monitoring Program**

The methodology and findings of the monitoring program are described in Appendixes E.2 and G. Components of the program include influent and effluent monitoring of flow, biochemical oxygen demand, suspended solids, oil and grease, priority pollutants, pesticides and other potential pollutants.

Receiving waters are monitored nearshore, onshore and offshore. Seven permanent stations are used for sampling sediments and collecting annual benthic samples of invertebrates for observing changes in the community structure of both soft and hard bottom communities.

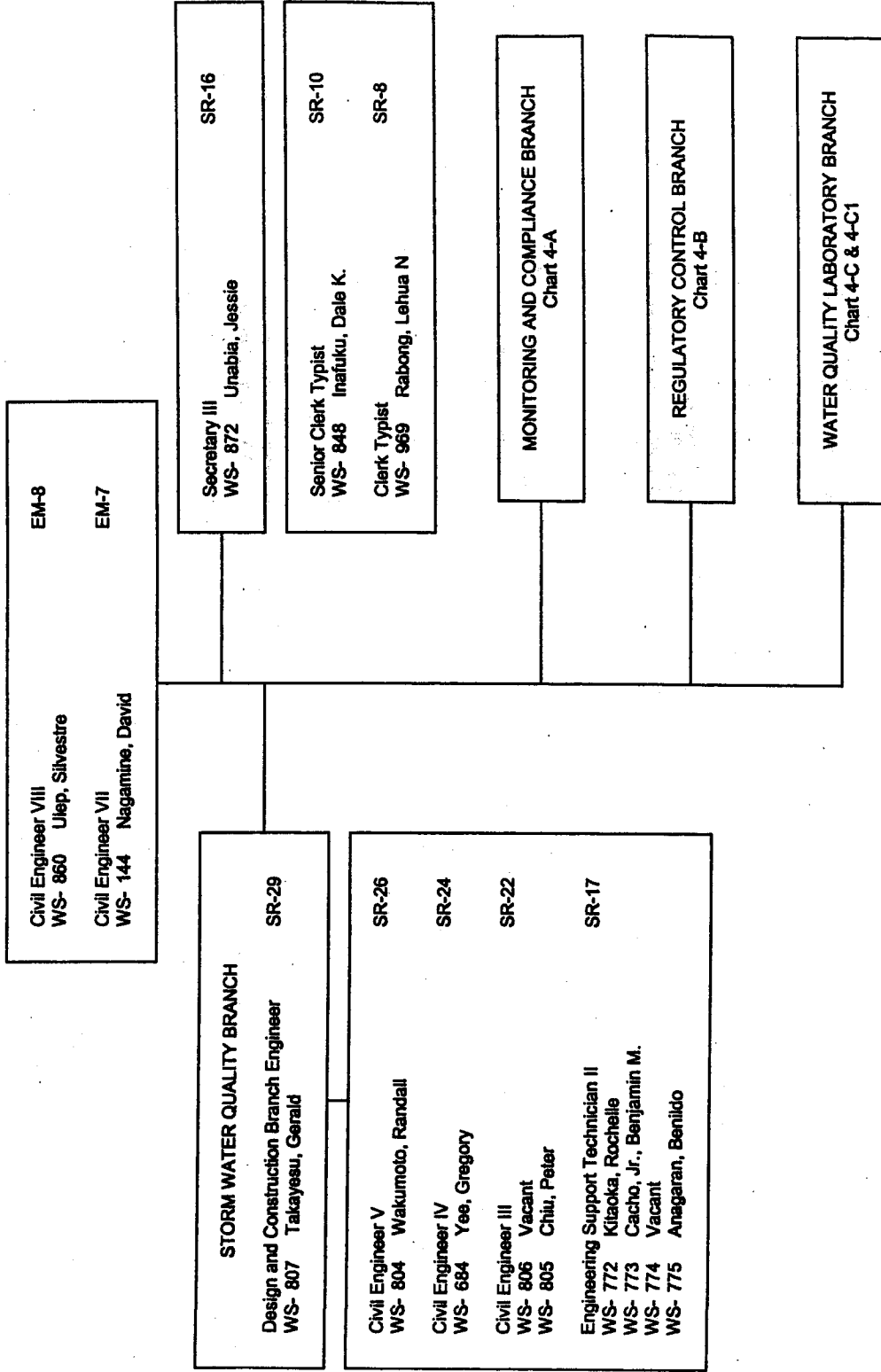
The organization and staffing of the city's compliance divisions are shown on Figures 1-1 through 1-4. In addition to the ongoing monitoring program, the city had sponsored a major investigation of Mamala Bay with the objective of determining the effect of all wastewater discharges on the coastal waters of southwest Oahu. Release of the final Mamala Bay Commission Report concluded that there were no significant public health or environmental impact due to the discharge of primary treated effluent through the Barbers Point Deep Ocean Outfall. The findings and recommendations of the Mamala Bay study should be carefully studied in preparation for changes in the existing monitoring program.

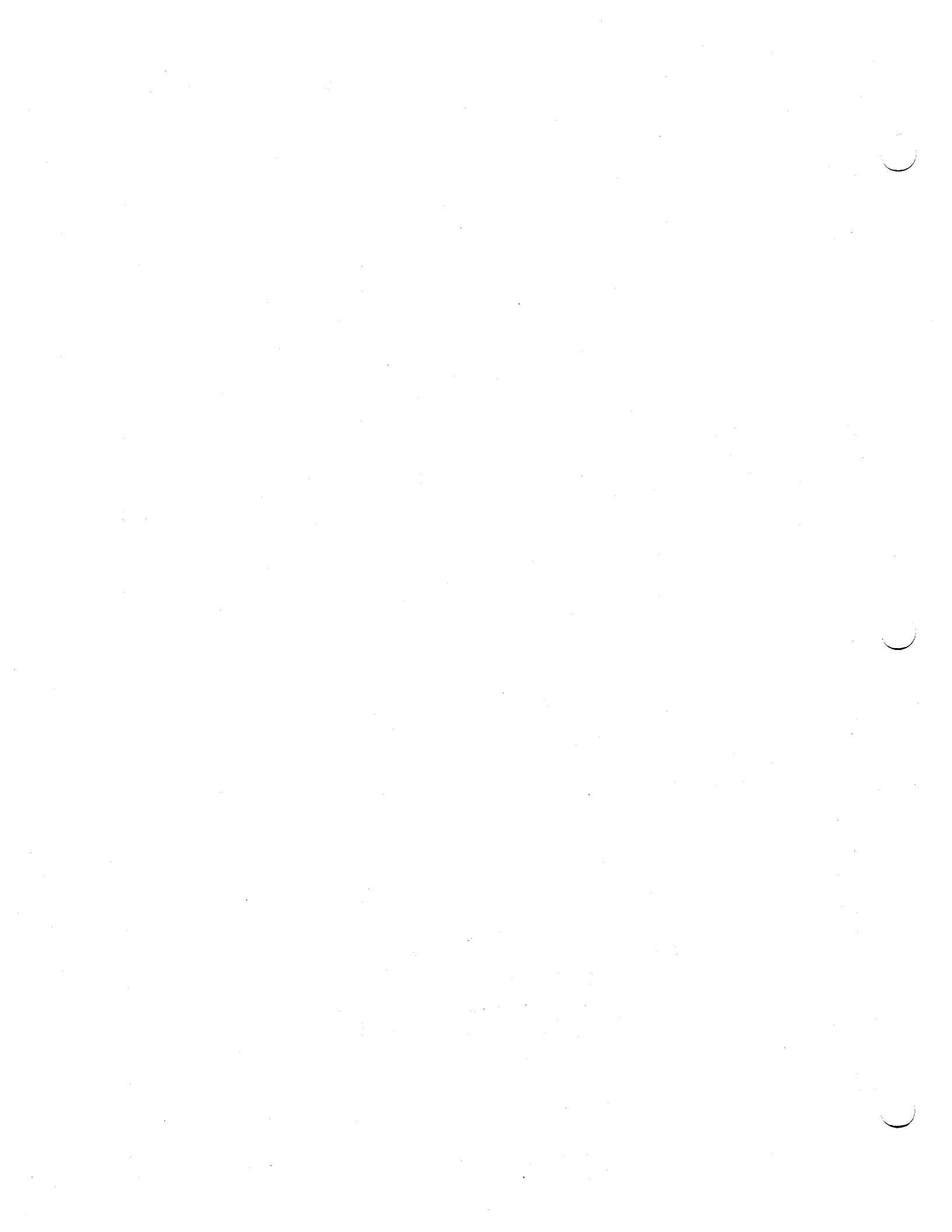
General recommendations based on findings of the City's Division of Environmental Quality, local experts and conclusions of the Mamala Bay Commission may include:

- ◆ More frequent monitoring of sediments
- ◆ Refinements of analytical techniques
- ◆ Implementation of a mussel-watch-type program
- ◆ Elimination of benthic biological monitoring
- ◆ More frequent monitoring of nonpoint sources

DEPARTMENT OF ENVIRONMENTAL SERVICES

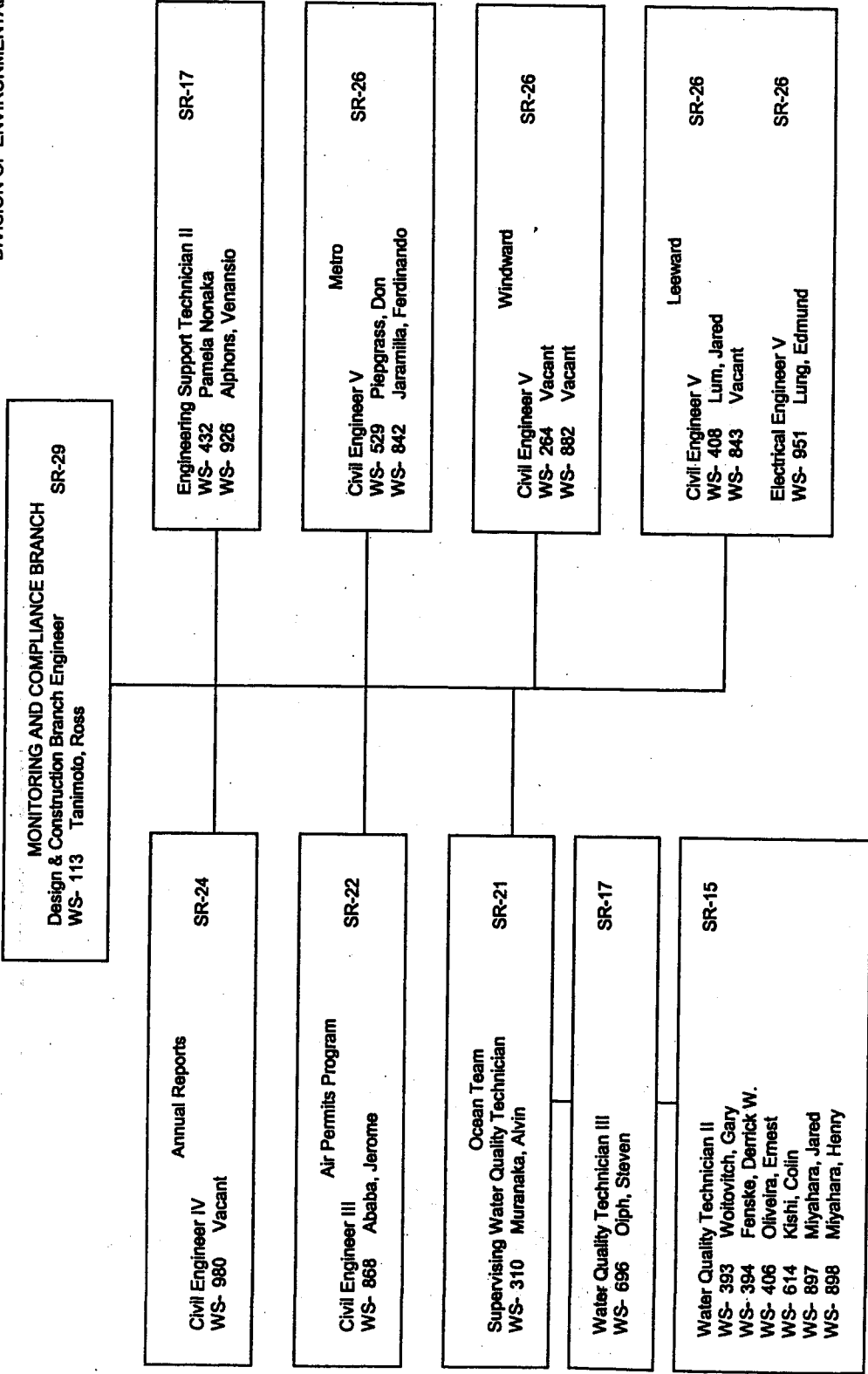
DIVISION OF ENVIRONMENTAL QUALITY  
Chart 4

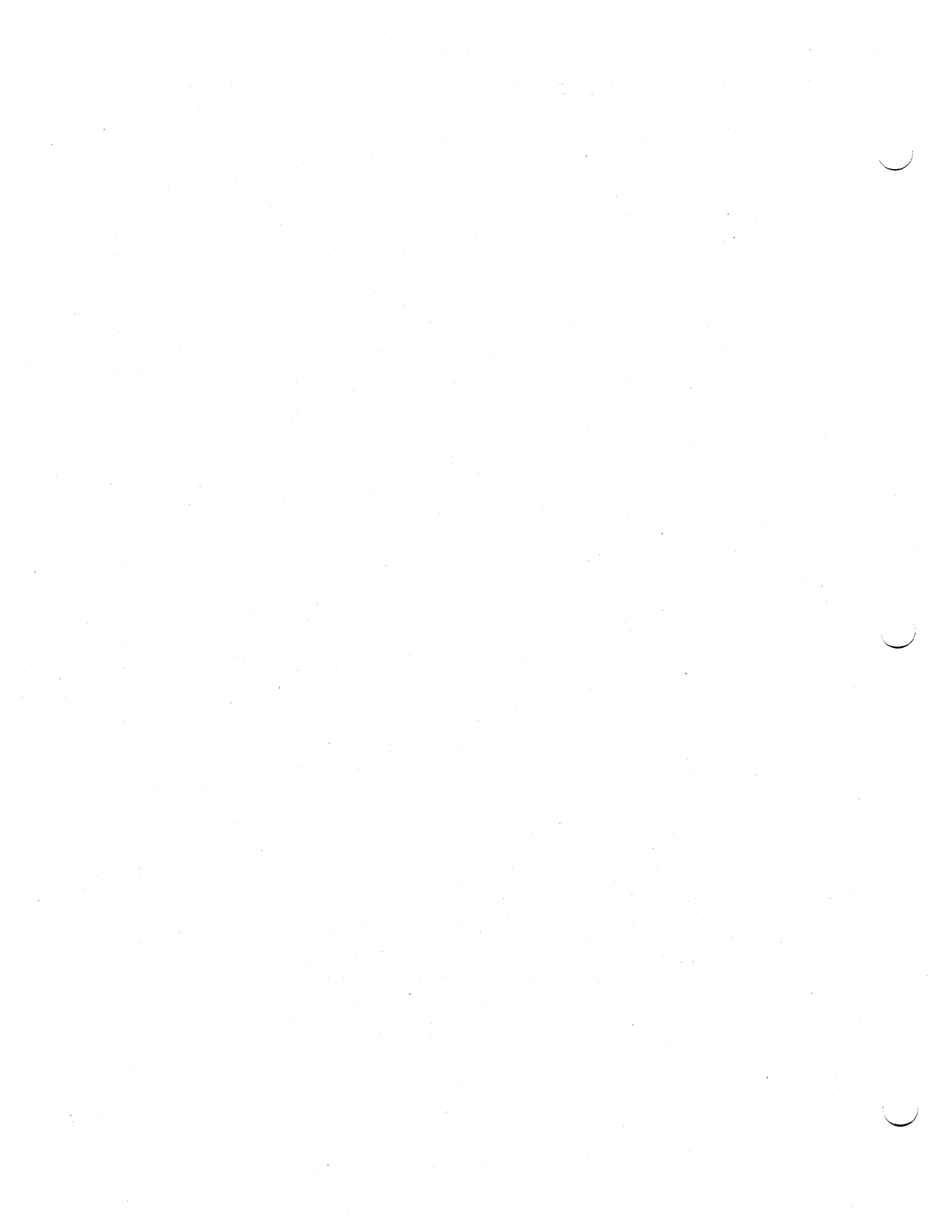


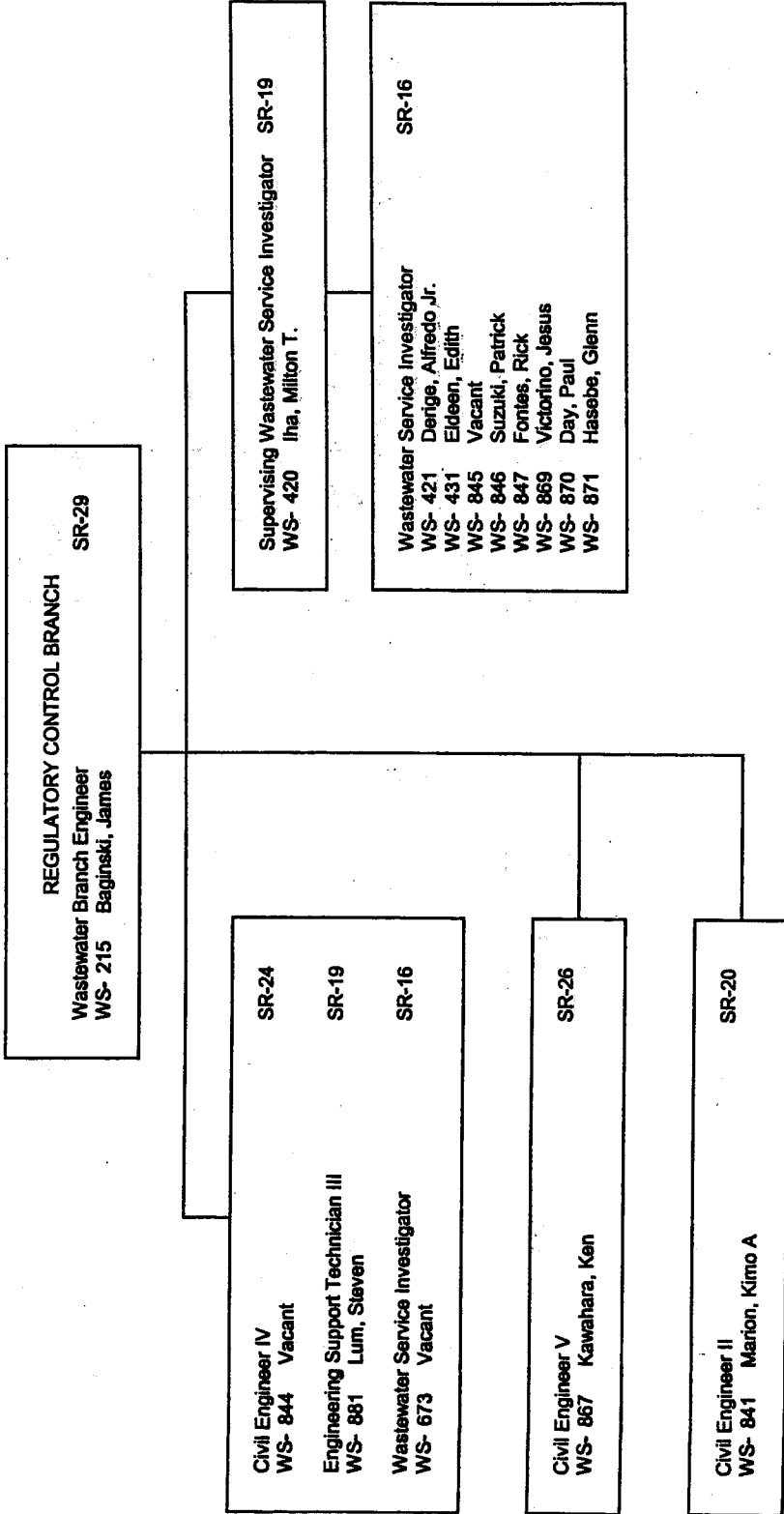


DEPARTMENT OF ENVIRONMENTAL SERVICES

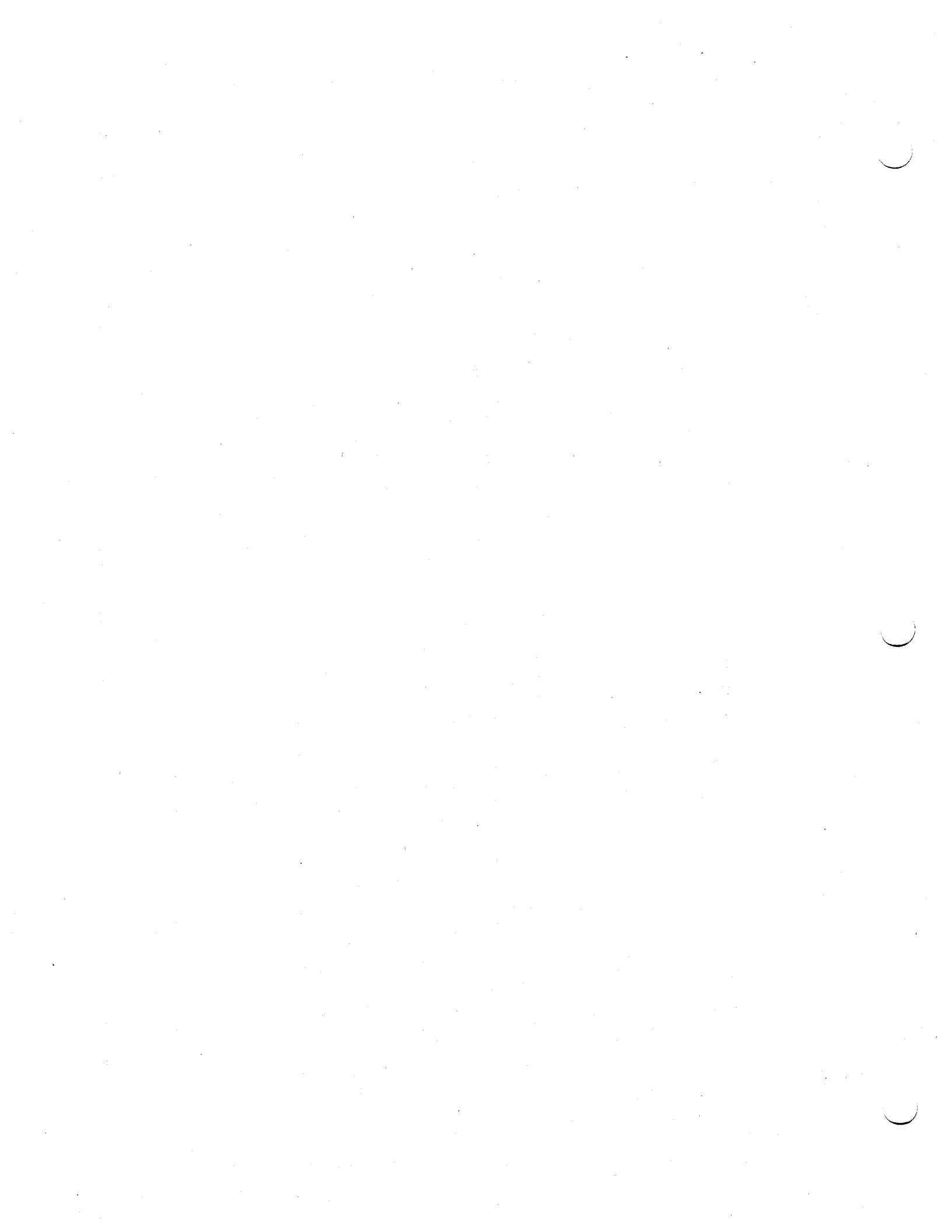
DIVISION OF ENVIRONMENTAL QUALITY  
Chart 4-A

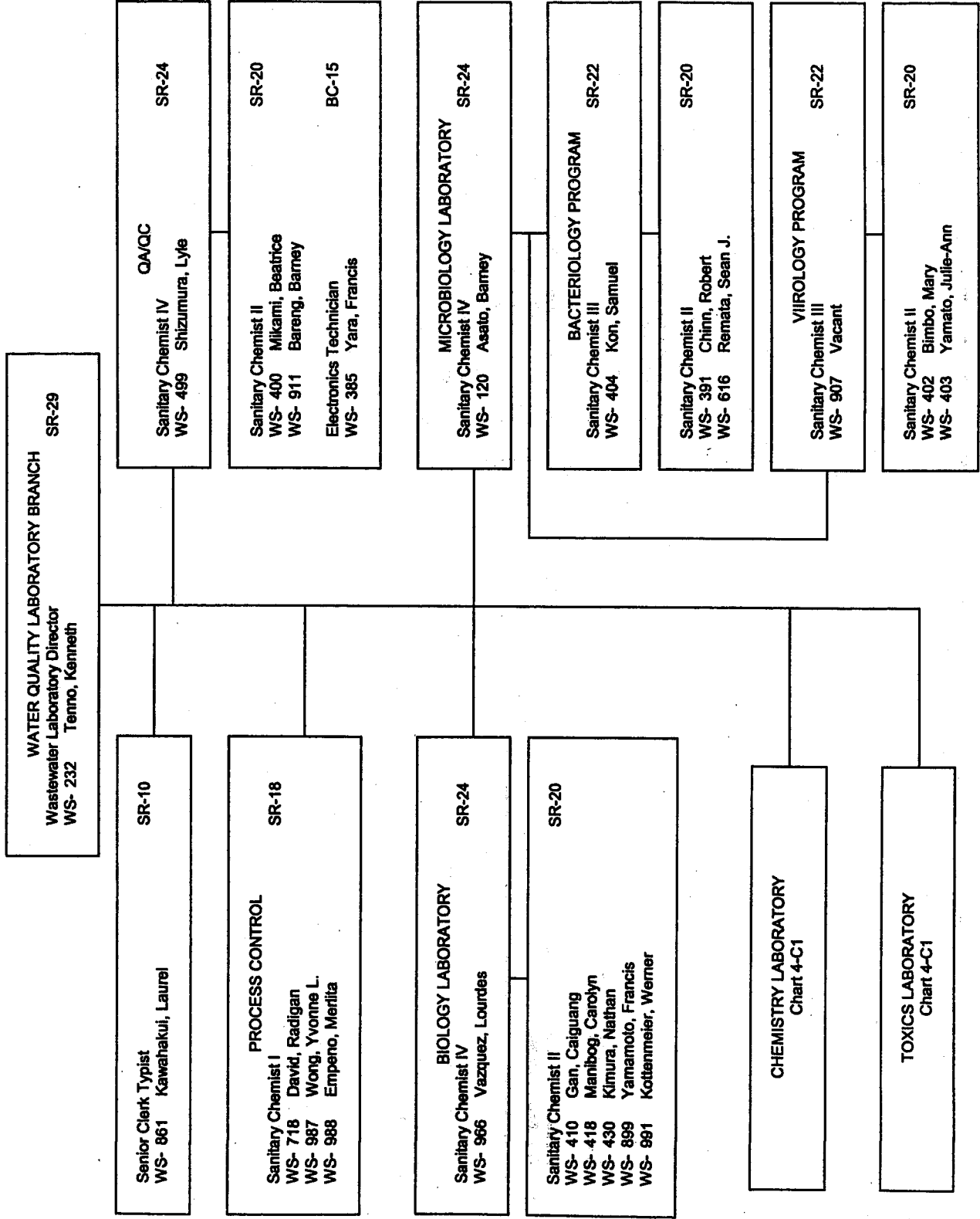


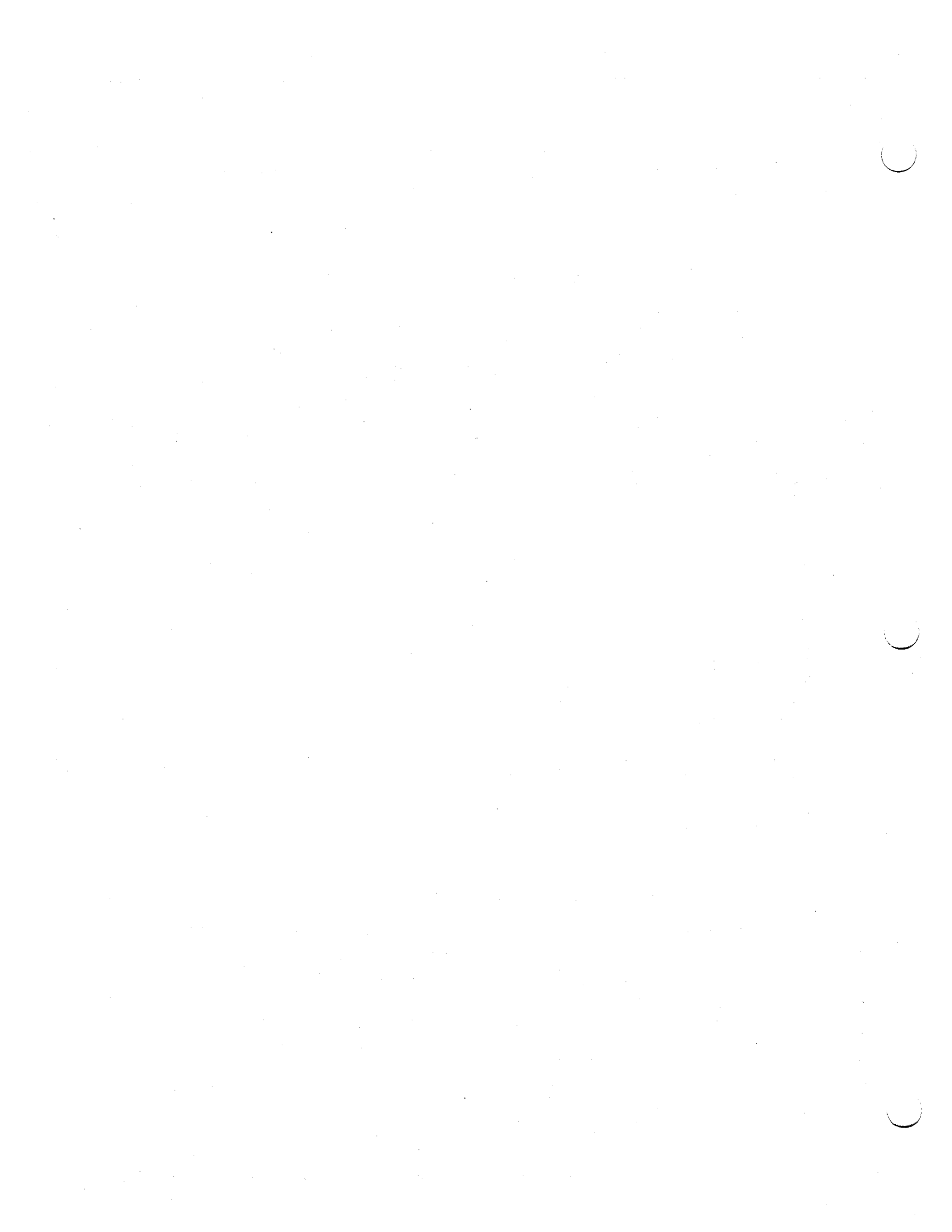












DEPARTMENT OF ENVIRONMENTAL SERVICES

DIVISION OF ENVIRONMENTAL QUALITY

Chart 4-C1

WATER QUALITY LABORATORY BRANCH

**CHEMISTRY LABORATORY**  
 SR-24  
 Sanitary Chemist IV  
 WS- 119 Takata, Dale

**NPDES MONITORING**  
 SR-22  
 Sanitary Chemist III  
 WS- 405 Arbutnot, Stephen

**SR-20**  
 Sanitary Chemist II  
 WS- 303 Kawada, Alvin  
 WS- 347 Koeaki, Glenn  
 WS- 565 Kawamoto, Gregg  
 WS- 859 Kam, Lellani  
 WS- 976 Vacant  
 WS- 977 Vacant

**SR-13**  
 Laboratory Technician II  
 WS- 230 Vacant  
 WS- 287 Vacant

**PRETREATMENT PROGRAM**  
 SR-22  
 Sanitary Chemist III  
 WS- 473 Edmondson, Robert

**SR-20**  
 Sanitary Chemist II  
 WS- 286 Matsuda, Eric M  
 WS- 428 Miyake, Alan

**TOXICS LABORATORY**  
 SR-24  
 Sanitary Chemist IV  
 WS- 121 Goo, Reginald

**ORGANIC ANALYSES**  
 SR-22  
 Sanitary Chemist III  
 WS- 285 Takazawa, Richard

**SR-20**  
 Sanitary Chemist II  
 WS- 427 Vacant  
 WS- 428 Vacant  
 WS- 429 Yuen, Kyle

**INORGANIC ANALYSES**  
 SR-22  
 Sanitary Chemist III  
 WS- 417 Salazar-Figueroa, Lilela

**SR-20**  
 Sanitary Chemist II  
 WS- 392 Vacant  
 WS- 398 Vacant

**AIR MONITORING**  
 SR-20  
 Sanitary Chemist II  
 WS- 965 Vacant

