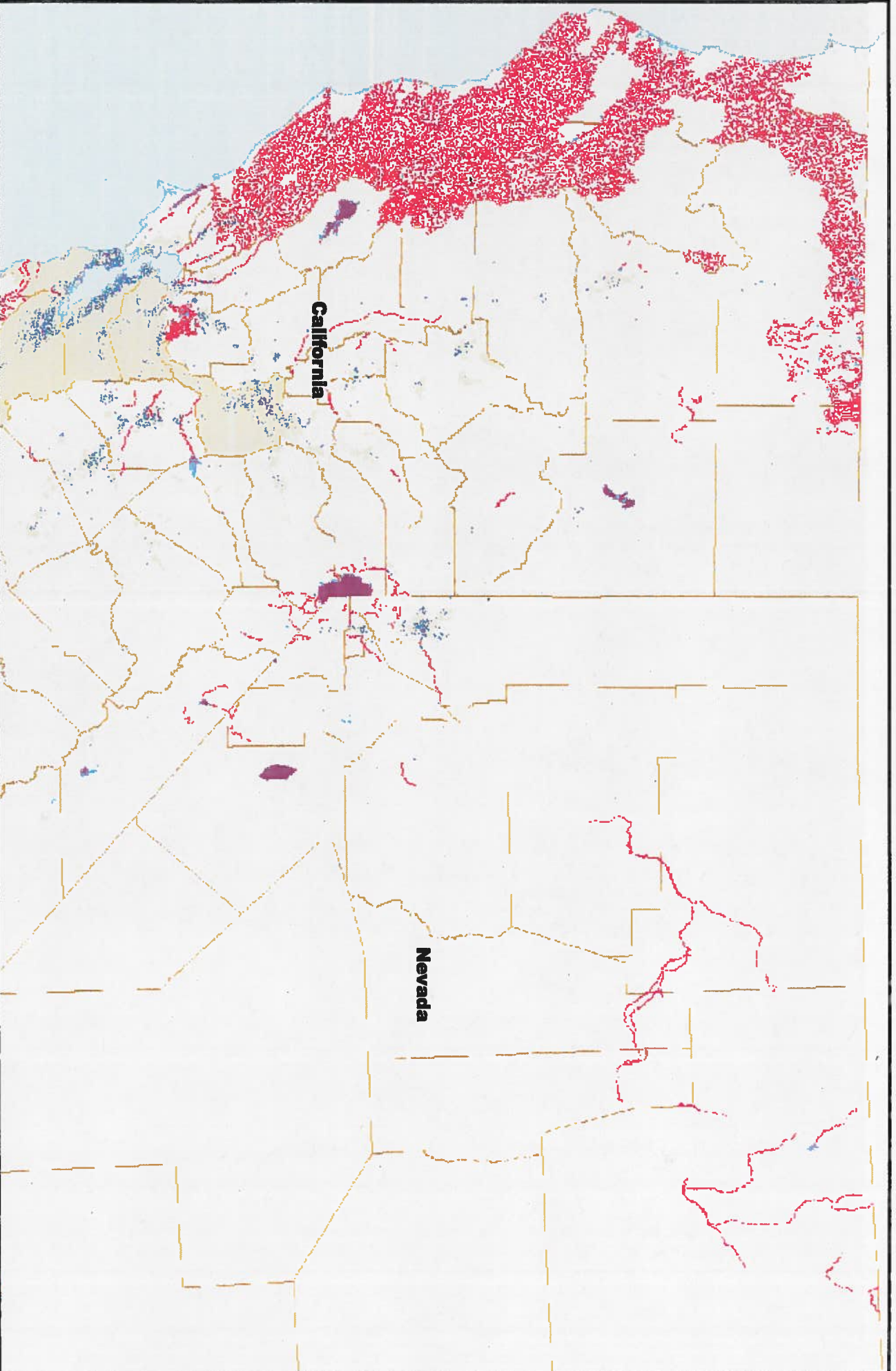


US EPA ARCHIVE DOCUMENT



Impaired Waters 303d (2013)

Impaired Water Areas 303d (2013)

Municipal Separate Storm Sewer Systems (MS4s)

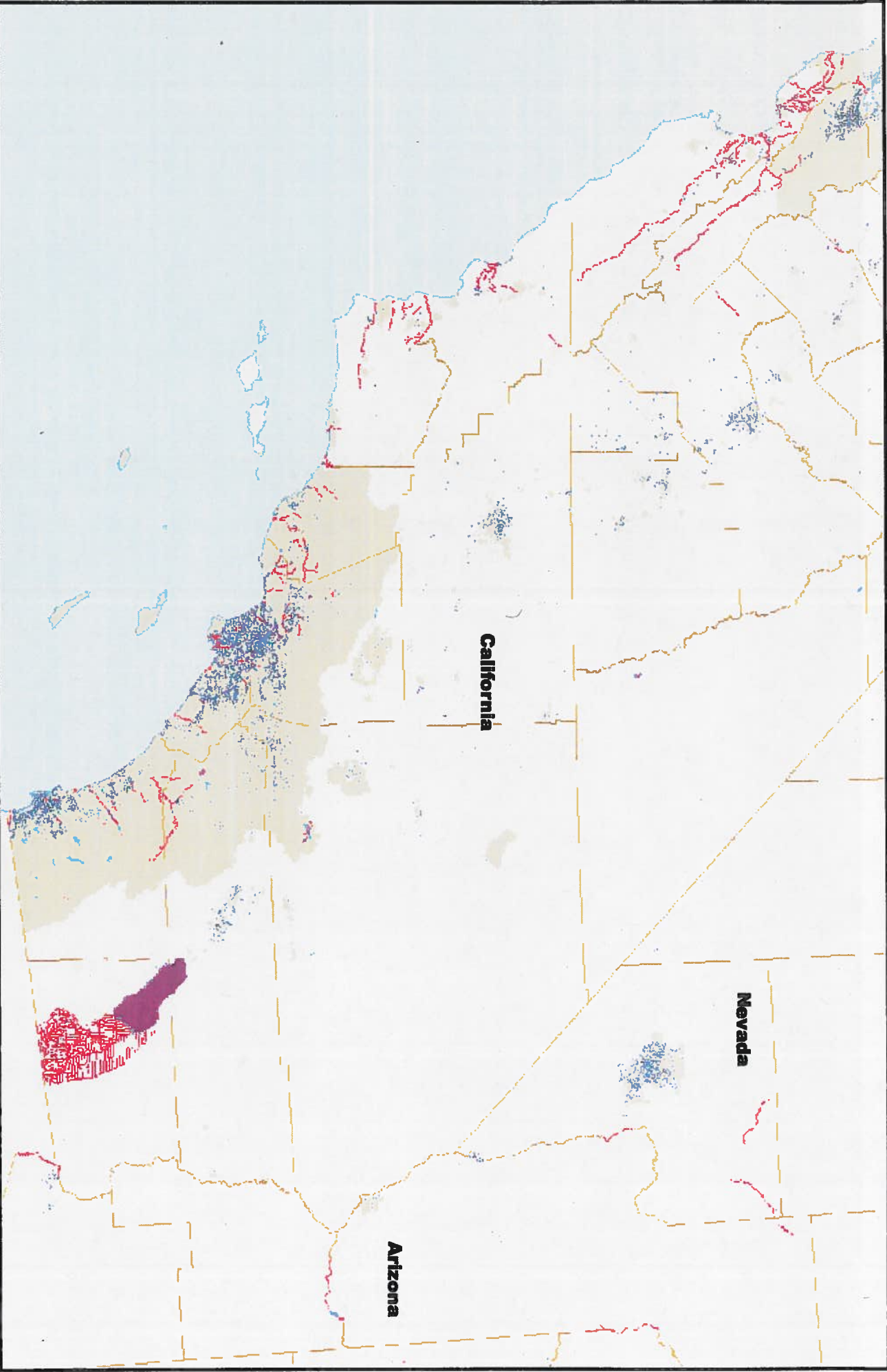
Stormwater Permits, Impervious Cover, and Impaired Waters in Region 9

% Impervious Cover

> 70%



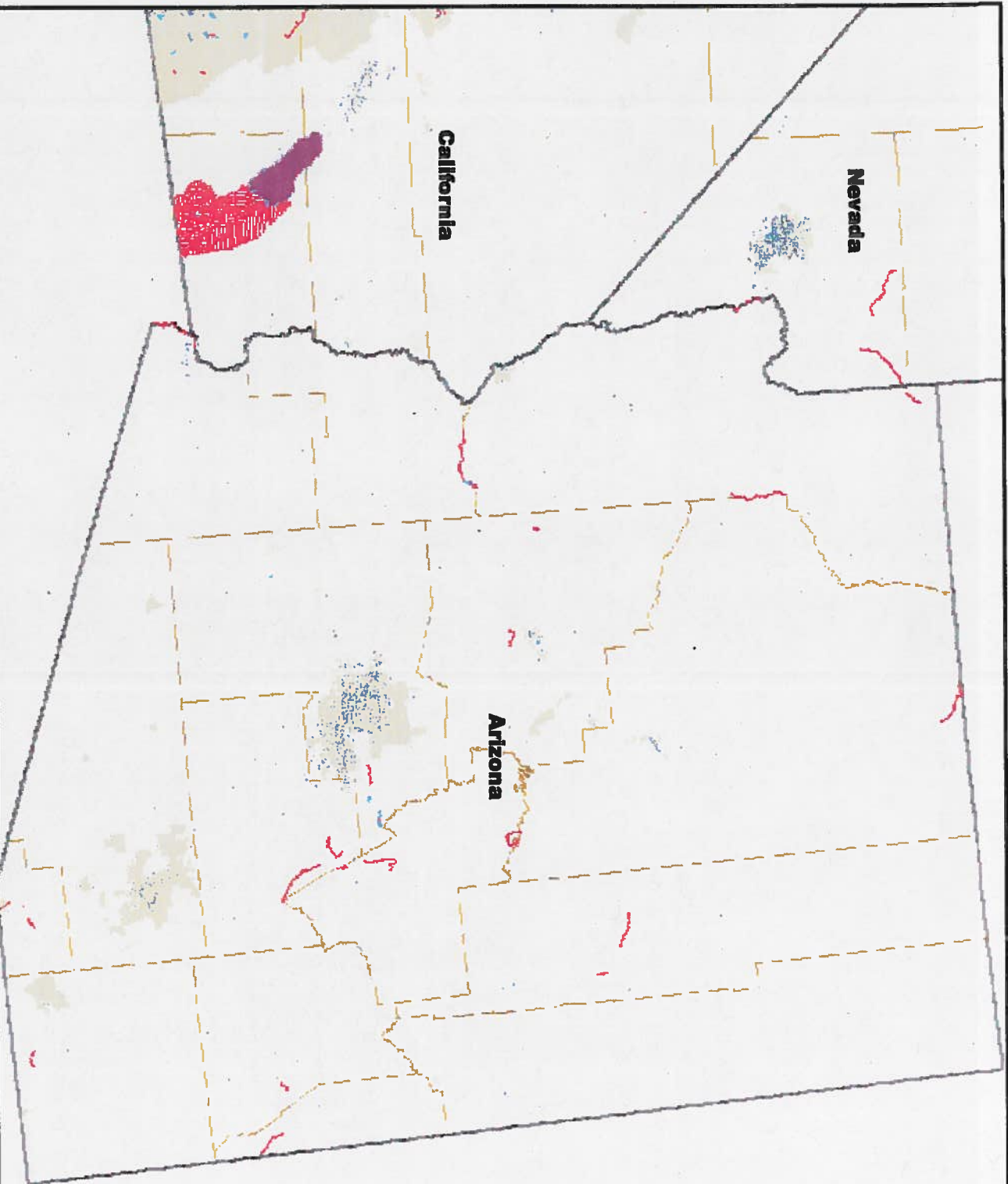
ORC1402127.1a
January 16, 2014






**Stormwater Permits, Impervious Cover,
and Impaired Waters in Region 9**

- Impaired Waters 303d (2013)
- Impaired Water Areas 303d (2013)
- Municipal Separate Storm Sewer Systems (MS4s)


% Impervious Cover
> 70%

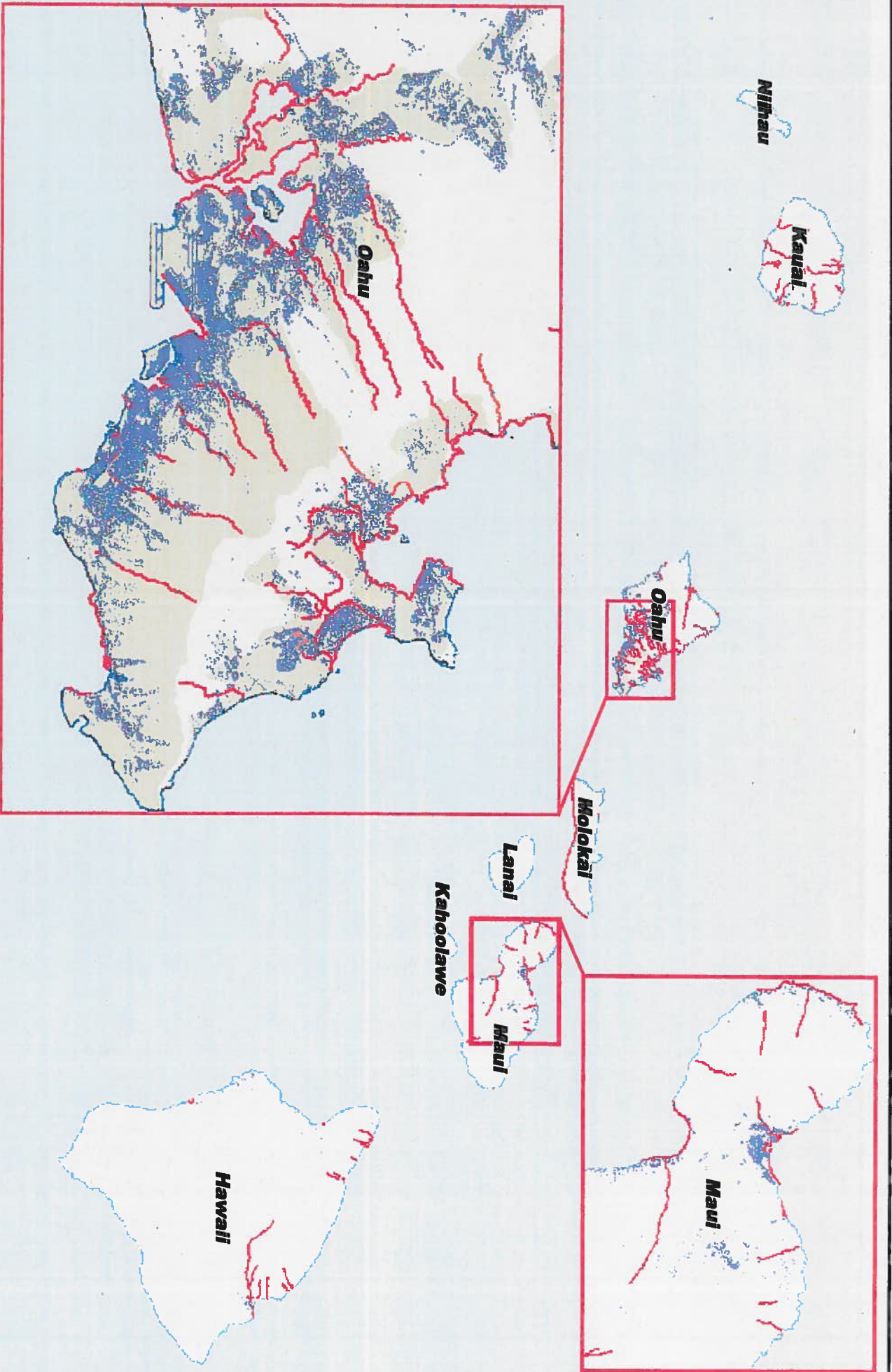


Stormwater Permits, Impervious Cover, and Impaired Waters in Region 9




-  Impaired Waters 303d (2013)
-  Impaired Water Areas 303d (2013)
-  Municipal Separate Storm Sewer Systems (MS4s)



 % Impervious Cover > 70%



Stormwater Permits, Impervious Cover, and Impaired Waters in Region 9

-  Impaired Waters 303d (2013)
-  Impaired Water Areas 303d (2013)
-  Municipal Separate Storm Sewer Systems (MS4s)

 % Impervious Cover
> 70%

