

US EPA ARCHIVE DOCUMENT

PUBLIC NOTICE

Proposed Area of Potential Effects for Romic Southwest Under Section 106 of the National Historic Preservation Act

□ Romic Southwest is a hazardous waste storage and treatment facility on the Gila River Indian Community near Chandler, Arizona. The Environmental Protection Agency (EPA) is in the process of making a permit decision at Romic.

As part of the permit decision, EPA must comply with the National Historic Preservation Act (NHPA). In compliance with the NHPA, EPA is proposing an Area of Potential Effects for our permit decision at Romic. We are asking the public for comments on this proposal.

The proposed Area of Potential Effects is one of the first steps in EPA's evaluation under Section 106 of the NHPA. Comments from the public will help EPA determine the Area of Potential Effects.

EPA must identify any historic properties within the Area of Potential Effects that may be affected by operations at Romic. The term "historic properties" includes properties of traditional religious and cultural importance to an Indian Tribe. Effects from Romic may include noise, visual effects, or air emissions containing hazardous constituents. Under the NHPA, EPA must then take possible adverse effects to historic properties into consideration.

The map to the right shows the proposed Area of Potential Effects. EPA is making this proposal after consultation with the Gila River Indian Community, the Arizona State Historic Preservation Office, and Romic.

We are interested in hearing your comments on the proposed Area of Potential Effects.

If you have comments on the boundaries of the Area of Potential Effects, please let EPA know by October 15, 2004. Also, you may comment at any time during the process to advise us of any historic properties within the Area of Potential Effects.

To comment, you may write, email,
or call Karen Scheuermann at:

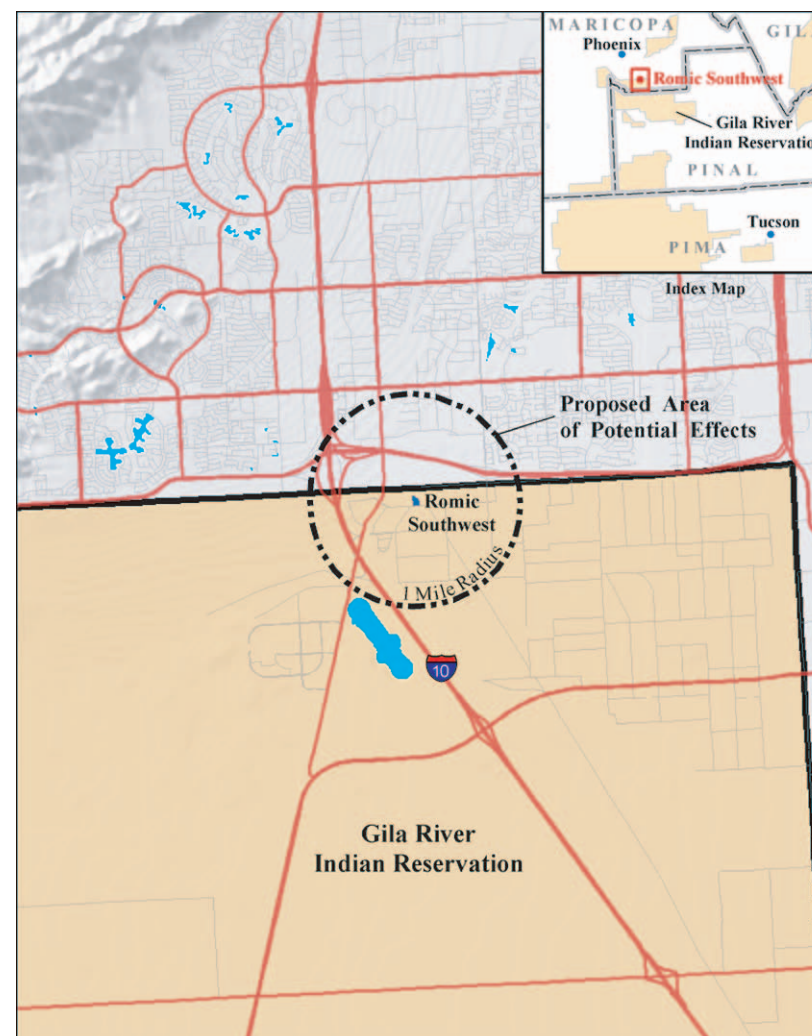
Karen Scheuermann
US EPA Region 9 (WST-4)
75 Hawthorne Street
San Francisco, CA 94105

scheuermann.karen@epa.gov

phone: (415) 972-3356

Or you may leave a message on
EPA's toll-free number (800) 231-3075
and we will return your call.

In the future, EPA will publish separate public notices regarding other aspects of the permit decision at Romic, such as the draft permit decision.



A detailed map and additional documents regarding the steps leading up to this proposal are available at the GRIC Department of Environmental Quality Building, 35 Pine Street, Sacaton, AZ or EPA's San Francisco office, 75 Hawthorne Street, San Francisco, CA. You may also find information about Romic and the National Historic Preservation Act at these locations.